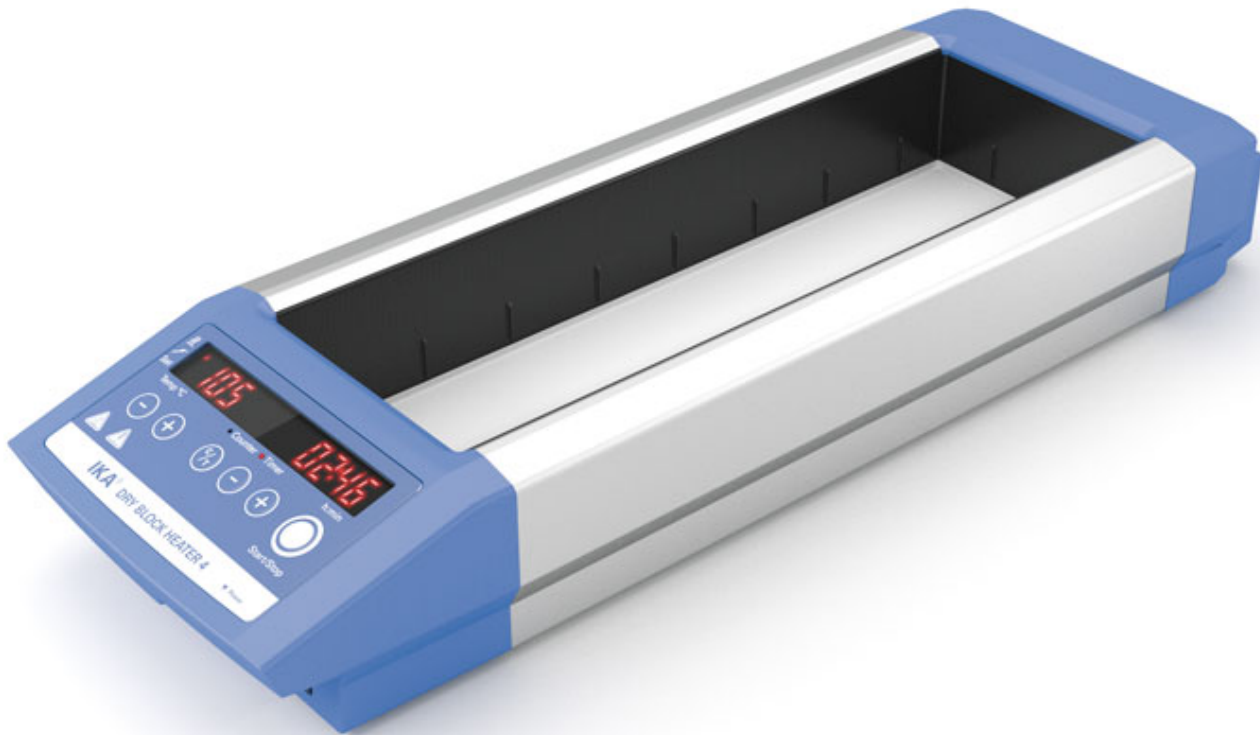




designed for scientists



Dry Block Heater 4

/// Data Sheet

Digital block heater for four aluminum blocks provides precise temperature control in small vessels. Included PT-1000 temperature sensor allows temperature control directly in the sample vessel. It is used with PCR tubes, PCR strips, Greiner tubes, microplates and cuvettes. The block heater is ideal for melting and boiling point determination, enzyme reactions, incubation and activation of cultures, immunoassays, DNA denaturation, culture media tests, coagulation tests, blood-urea-nitrogen determinations and in situ hybridizations.

- Stepless adjustable temperature up to 120 °C
- Timer: Countdown, adjustable from 1 min to 99h 59 min
- Counter: Display of heating time
- Highly versatile with a large number of blocks
- Error code display



IKAworlwide



IKAworlwide /// #lookattheblue



@IKAworlwide



designed for scientists

- Fixed safety circuit
- Acoustic signal at end of test



IKAworlwide



IKAworlwide /// #lookattheblue



@IKAworlwide



designed for scientists

Technical Data

Number of blocks	4
Heat output [W]	412
Heating temperature range [°C]	room temp. +5° - 120
Temperature display	yes
Adjustment and display resolution [K]	1
Connection for ext. temperature sensor	CT (DIN12878)
PT 1000 variation;DIN EN 60751 Kl. A [K]	$\leq \pm (0.15 + 0.002 \times T)$
Temperature stability within the blocks at 37°C * [±°C]	0.2
Temperature stability within the blocks at 60°C * [±°C]	0.4
Temperature Homogeneity @ 37°C * [K]	0.2
Temperature Homogeneity @ 60°C * [K]	0.4
Heatingrate / Heat up time with external sensor * [K/min]	4
Set-up plate material	Aluminium alloy
Set-up plate dimensions [mm]	96 x 304
Fixed safety circuit [°C]	150
Timer	yes
Time setting range [min]	1 - 5999
* Measured in IKA DBH Testingblock	Refer Manual for more details
Dimensions (W x H x D) [mm]	151 x 73 x 456
Weight [kg]	2
Permissible ambient temperature [°C]	5 - 40
Permissible relative humidity [%]	80
Protection class according to DIN EN 60529	IP 21
Voltage [V]	220 - 240 / 115 / 100
Frequency [Hz]	50/60
Power input [W]	412





WolfLabs

Pricing on any accessories shown can be found by keying the part number into the search box on our website.

The specifications listed in this brochure are subject to change by the manufacturer and therefore cannot be guaranteed to be correct. If there are aspects of the specification that must be guaranteed, please provide these to our sales team so that details can be confirmed.

www.wolflabs.co.uk

Tel : 01759 301142

Fax : 01759 301143

sales@wolflabs.co.uk

Please contact us if this literature doesn't answer all your questions.