

HALO 2

HI9810302

Wireless pH Tester for Soil

with built-in specialized electrode



GroLine

INSTRUCTION MANUAL

HANNA[®]
instruments

Dear
Customer,

Thank you for choosing a Hanna Instruments product.

Please read this instruction manual carefully before using this instrument.

This manual will provide you with the necessary information for correct use of this instrument, as well as a precise idea of its versatility.

If you need additional technical information, do not hesitate to e-mail us at tech@hannainst.com or view our contact list at www.hannainst.com.

All rights are reserved. Reproduction in whole or in part is prohibited without the written consent of the copyright owner, Hanna Instruments Inc., Woonsocket, Rhode Island, 02895, USA.

TABLE OF CONTENTS

1. Preliminary Examination	4
2. Specifications	4
3. General Description & Intended Use	5
Operating Modes	5
Probe Features	5
4. Functional Description & LCD Display	5
5. General Operations	6
Turning the Tester On & Off	6
Battery Replacement	6
6. Setup	6
Temperature Unit	6
Auto-Off Interval	6
Calibration Points	6
Buffer Set	6
pH Resolution	6
Bluetooth® Wireless Mode	6
Bluetooth Pairing	7
Date & Time	7
7. Bluetooth	7
8. Hanna Lab Application	7
Tag a Measurement	7
9. Calibration	7
Preparation & Guidelines	7
Procedure	7
Stand-Alone Tester (Up to Three-Point Calibration)	8
With Hanna Lab App (Up to Four-Point Calibration)	8
10. Measurement	8
11. Care & Maintenance	9
Refilling the Electrode	9
Storage	9
12. Warning & Error Messages	9
13. Abbreviations	9
14. Accessories	10
Recommendations for Users	10
Warranty	10
Certification	11

1. PRELIMINARY EXAMINATION

Remove the tester and accessories from packaging and examine them carefully. For further assistance, please contact your local Hanna Instruments office or email us at tech@hannainst.com.

Each HI9810302 is supplied with a starter kit consisting of:

- pH 4.01 buffer solution, 20 mL sachet (2 pcs.)
- pH 7.01 buffer solution, 20 mL sachet (2 pcs.)
- Cleaning solution for soil deposits, 20 mL sachet (1 pc.)
- Cleaning solution for humus deposits, 20 mL sachet (1 pc.)
- Electrode storage solution, 13 mL dropper bottle (1 pc.)
- Gelled bridge electrolyte, 13 mL dropper bottle (1 pc.)
- 3V Lithium battery – CR2032
- Instrument quality certificate and Instruction manual

Note: Save all packing material until you are sure that the tester works correctly. Any damaged or defective item must be returned in its original packing material with the supplied accessories.

2. SPECIFICATIONS

Range	pH	0.00 to 12.00 pH
	mV *	pH/mV conversion
	Temperature **	0.0 to 60.0 °C (32.0 to 140.0 °F)
Resolution	pH	0.01 or 0.1 pH
	mV *	0.1 or 1 mV
	Temperature	0.1 °C; 0.1 °F
Accuracy	pH	±0.05 pH
	Temperature	±0.5 °C; ±0.9 °F
Calibration	Up to three points or four points *	
	Automatic buffer recognition with Standard buffers Hanna (pH 1.68 *, 4.01, 7.01, 10.01) or NIST (pH 1.68 *, 4.01, 6.86, 9.18)	
Temperature compensation	Automatic (ATC) or Manual (MTC) *	
Electrode	Body material	Polyvinylidene Fluoride (PVDF)
	Glass	Low Temperature (LT)
	Junction	Open
	Reference cell	Double, Ag/AgCl
	Electrolyte	Gel (refillable)
	Tip / Shape	Conic, Ø 5 x 10 mm (Ø 0.19 x 0.39")
	Outer diameter	12 mm (0.47")
	Length	75 mm (2.95")
Battery type	3V Lithium – CR2032	
Battery life	Approximately 1000 hours (500 hours with Bluetooth enabled)	
Environment	0 to 50 °C (32 to 122 °F)	
Casing	IP65 ingress protection	
Dimensions / Weight	51 x 150 x 21 mm (2.0 x 5.9 x 0.8") / 45 g (1.6 oz.)	

* Available with Hanna Lab App

** Measuring outside the recommended operating temperature range may damage the gel electrolyte and void product warranty.

Note: The tester can display measurements from –2.00 to 16.00 pH. Measurements outside of the pH range will flash. In this case assess the integrity of the tester and the type of measured sample.

3. GENERAL DESCRIPTION & INTENDED USE

HI9810302 is a professional wireless pH tester, part of Hanna Instruments HAL02 family.

- The integrated Bluetooth module allows the tester to be connected to a compatible smart device with the Hanna Lab App.
- The tester has a compact, waterproof casing, and automatic pH calibration at up to three points, or four points when used with the Hanna Lab App.
- Automatically compensated temperature readings are displayed on a large LCD.
- Accurate and easy to use, the tester is ideal for agricultural, hydroponics, and greenhouse growers that need to monitor the pH of the soil.

Operating Modes

The HI9810302 can be used as a stand-alone pH tester or connected to the Hanna Lab App.

The Hanna Lab App turns a compatible smart device into a full-featured pH meter. Features include: electrode condition, GLP with time-stamp, live-readings, mV resolution, manual temperature compensation, stability criteria, calibration reminder, pH (mV) and temperature alarms, tester ID, and data sharing.

Probe Features

The rugged **PVDF electrode body** is easy to clean. Resistant to most chemicals (e.g. solvents, sodium hypochlorite), ultraviolet light, and fungal growth, the PVDF body also has high-abrasion resistance and mechanical strength.

The **conical tip** allows for easy penetration into solids and semisolids.

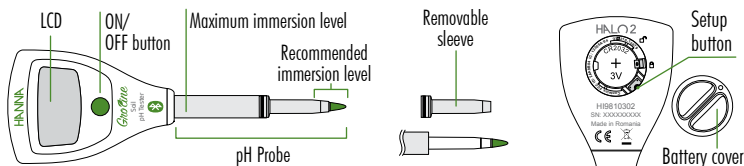
The **PVDF outer junction sleeve** can be removed and cleaned. Once cleaned, a small amount of supplied gel electrolyte is added and the junction is refreshed, improving the measurement and extending the life of the tester.

The **double junction** design presents a silver-free electrolyte solution interacting with the sample, making the electrode less susceptible to clogging and guaranteeing a fast response and stable reading.

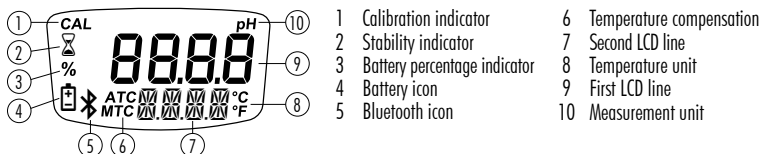
Built-in **temperature sensor** at the tip of the pH electrode allows for rapid determination of the sample temperature and a high-accuracy temperature reading.

4. FUNCTIONAL DESCRIPTION & LCD DISPLAY

Front & Back view



LCD display



5. GENERAL OPERATIONS

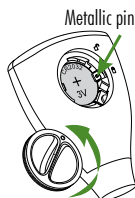
Turning the Tester On & Off

- Turn the tester face down. Rotate the battery cover on the back of the tester counterclockwise and set it aside. Remove the battery insulation film.
- Press the ON/OFF button to turn the tester on or off. Initialization screen displays all LCD segments, followed by the battery percentage. The tester enters measurement mode. Before the tester turns off, "OFF PWR" is displayed briefly.
- Press and hold the ON/OFF button to turn the tester off when connected to Bluetooth.

Battery Replacement

1. Turn off the tester. Turn the tester face down and rotate the battery cover counterclockwise. Set the battery cover aside. Press the metallic pin to push old battery out.
2. Place the new battery with positive (+) sign facing out.
3. Reset the date and time in setup, or connect to the Hanna Lab App to update it automatically.
4. Align the mark on the cover with the open lock icon (🔓) on the case. Rotate the cover clockwise until the mark on the cover aligns with the closed lock icon (🔒).

Note: Only use specified battery type. Dispose of old battery in accordance with local regulations.



6. SETUP

The Setup button is located inside the battery compartment. After Setup configuration, replace the cover.

Setup Menu Navigation

- Press the Setup button to enter Setup mode and navigate menu items.
- To exit Setup mode, press the Setup button after "SEE TIME" option is displayed.
- Press the ON/OFF button to configure menu item options.

Temperature Unit

Option: °C or °F

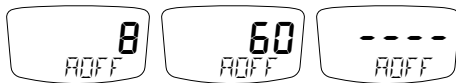
Press ON/OFF button to select desired temperature unit.



Auto-Off Interval

Option: 8, 60 min., or "----" (disabled)

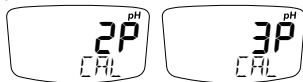
Press ON/OFF button to select desired interval. To save battery life, after the selected auto-off interval has elapsed, the tester will automatically turn off.



Calibration Points

Option: 2P or 3P

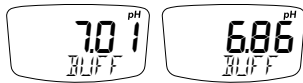
Press ON/OFF button to select between up to two- or up to three-point calibration.



Buffer Set

Option: 7.01 pH (Hanna) or 6.86 pH (NIST)

Press ON/OFF button to select the calibration buffer set (Hanna or NIST).



pH Resolution

Option: 0.01 pH or 0.1 pH

Press the ON/OFF button to select resolution.



Bluetooth Wireless Mode

Option: On, PAIr, or OFF

Press ON/OFF button to select Bluetooth option at start-up.



Bluetooth Pairing

Option: dEL PAIR

Press ON/OFF button to delete saved paired device.



Date & Time

Option: SET TIME

Press ON/OFF button to set the date and time.

Option: YEAR, MO, DAY, HOUR, and MIN

Use the Setup button to select the option and press the ON/OFF button to change the selected option.



7. BLUETOOTH

With “PAIR BLU” or “ON BLU” selected in Setup, the Bluetooth icon (⌘) will blink for up to 45 seconds, indicating the tester is in discoverable mode. Once connected, the icon will stop blinking. If not connected, the icon is not displayed.

- Select “ON BLU”, to enable Bluetooth without bonding.
- Select “PAIR BLU”, to enable Bluetooth with bonding. A 6-digit bonding pin is displayed the first time the tester and smart device are paired. Once the devices are paired, the bonding pin is not required when reconnected.
- Select “OFF BLU”, to disable Bluetooth.
- Select “dEL PAIR”, to delete all paired devices. If PAIR BLU is enabled, a bonding pin will need to be re-entered.

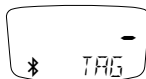
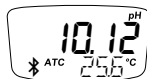
8. HANNA LAB APPLICATION

- The Hanna Lab App is available on the App Store® and on Google Play.
- Consult the Help section of the application for information on calibration, measurement, data logging, and sharing.
- When the tester is in discoverable mode, it will appear in the list of “Available Devices”.
- Within the application, tap “Connect” to pair the tester with the device. All readings are transmitted directly to the application.

Tag a Measurement

Once connected to the application, the ON/OFF button can be pressed to tag the current reading.

- Press the ON/OFF button from measurement mode. The display shows “SET TAG”, followed by “- TAG”.
- The reading on the application will flash green and the note icon (📌) will be displayed. Tap the note icon (📌) to add an annotation.



9. CALIBRATION

Preparation & Guidelines

1. Remove the probe from the plastic storage cap. Save the cap for probe storage.
2. Rinse off any storage solution or salts that may be on the body.
3. Verify there is solution inside the pH bulb by shaking the probe down to restore continuity as the solution may have moved up the stem during shipping.
4. For best results, use a rinse beaker and a separate calibration beaker for each buffer. Discard rinsing buffers after use.

Procedure

For most applications it is recommended to start with pH 7.01 buffer (or pH 6.86).

To restore factory defaults, press and hold the ON/OFF button. “CAL CLR” is displayed.

Note: It is recommended to calibrate the electrode with buffers at the temperature it will be used at.

Stand-Alone Tester (Up to Three-Point Calibration)

1. Rinse the electrode tip with purified water and blot dry. Then rinse with the buffer being used for calibration.
2. Press and hold ON/OFF button until "CAL MODE" is displayed.
3. When "70.1 USE" or "6.86 USE" is displayed ("CAL" tag blinking), place the electrode tip in the correct buffer.
4. When the buffer has been recognized, "REC" is displayed.
"WAIT" is displayed with the stability indicator (⊞) blinking until the reading is stable. Wait until the measurement is stored and the stability indicator disappears.



5. To save a one-point calibration and return to measurement mode, press the ON/OFF button.
"CAL SAVE" is displayed briefly.

With 2P option selected

6. Place the tip of the electrode in the second buffer rinse beaker, then in the second calibration buffer. Wait until the measurement is stored and the stability indicator disappears.
7. After the second point has been stored, "CAL SAVE" is displayed briefly and the tester will return to measurement mode automatically.

With 3P option selected

6. Place the tip of the electrode in the second buffer rinse beaker, then in the second calibration buffer. Wait until the measurement is stored and the stability indicator disappears.
7. Place the tip of the electrode in the third buffer rinse beaker, then in the third calibration buffer. Wait until the measurement is stored and the stability indicator disappears.
8. After the third point has been stored, "CAL SAVE" is displayed briefly and the tester will return to measurement mode automatically.

With Hanna Lab App (Up to Four-Point Calibration)

Connect the tester to the Hanna Lab App and follow the calibration procedure.

See the App Help section for the calibration procedure.

10. MEASUREMENT

The pH tester allows direct testing in the soil without taking samples or creating a slurry.

1. Inspect the pH probe to ensure the bridge electrolyte gel has not dried out. Refill if necessary.
2. Calibrate the pH tester.
3. Using an auger (HI721319), make a 20 mm (0.78") hole down into the soil.
The hole needs to be the same depth each time to avoid pH discrepancies.
4. Add some distilled or deionized water to the hole; the soil should be damp but not saturated.
5. Rinse the electrode with tap water and insert into the hole.
6. Allow for the reading to develop or stabilize.
7. After measurement, gently rinse off leftover soil (avoid using cloth or wipe).

Note: Direct soil pH testing is not recommended if the ground is stony or hardened as the electrode can be damaged.
If the soil is stony or hard, take a representative soil sample and add HI7051 Soil preparation solution.

11. CARE & MAINTENANCE

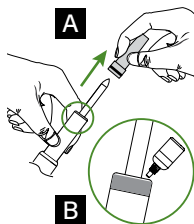
- Never immerse the tester over the maximum immersion level.
- Fresh buffers should be used for each calibration. Once the sachets are opened the buffer value can change over time.
- If the electrode is slow or sluggish, soak it in cleaning solution for 20 minutes. Rinse with water and hydrate the electrode in storage solution for a minimum of 30 minutes before calibrating.
- If measurements are taken successively, rinse the probe thoroughly in distilled or deionized water to eliminate cross-contamination between measurements.

Refilling the Electrode

- To remove the electrode sleeve, carefully rotate and slide it off (A). Set it to one side.

Note: Handle the probe with care, the pH electrode stem is made of glass.

- Rinse off any traces of electrolyte gel from sleeve. Soak the electrode tip in **HI70061** General purpose cleaning solution (or **HI700661**, **HI700663**, **HI700664**) for 20 minutes. Rinse with distilled or deionized water.
- Refill the reference well with **HI9071** Gelled bridge electrolyte (B).
- Replace the sleeve. Ensure the o-ring is fixed inside the electrode. Rinse off excess gel with distilled or deionized water.
- Shake the probe down gently to eliminate any trapped air bubbles.
- Soak the probe in **HI70300** Electrode storage solution for a minimum of 30 minutes before calibrating.



Storage

To ensure a quick response, the glass tip and junction should be kept hydrated.

When not in use, add a few drops of storage solution to the storage cap. If storage solution is not available, pH 4.01 or pH 7.01 buffer can be used.

Note: Do not store the electrode in distilled or deionized water.

12. WARNING & ERROR MESSAGES



"---- WRNG" displayed during calibration.

Invalid buffer.

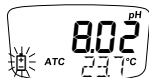
Check the buffer value and use fresh buffer.



Measured value displayed blinking.

Measured value is out of electrode range.

Clean the electrode to improve condition.



Battery icon (🔋) displayed blinking.

Battery is below 10 %, replace the battery.



"BAtt DEAD" and tester turns off.

Depleted battery, replace the battery.

13. ABBREVIATIONS

ATC	Automatic Temperature Compensation
GLP	Good Laboratory Practice
MTC	Manual Temperature Compensation
NIST	National Institute of Standards and Technology

14. ACCESSORIES

Ordering Information	Product Description
pH Buffer Solution	
HI50016-02	pH 1.68 buffer solution, 20 mL sachet (25 pcs.)
HI70004G	GroLine pH 4.01 buffer solution, 20 mL sachet (25 pcs.)
HI70006P	pH 6.86 buffer solution, 20 mL sachet (25 pcs.)
HI70007G	GroLine pH 7.01 buffer solution, 20 mL sachet (25 pcs.)
HI70009P	pH 9.18 buffer solution, 20 mL sachet (25 pcs.)
HI70010P	pH 10.01 buffer solution, 20 mL sachet (25 pcs.)
HI77400P	pH 4.01 & 7.01 buffer solution, 20 mL sachet (10 pcs., 5 each)
HI770710P	pH 10.01 & 7.01 buffer solution, 20 mL sachet (10 pcs., 5 each)
Electrode Cleaning Solution	
HI70061G	GroLine general purpose cleaning solution, 20 mL sachet (25 pcs.)
HI700661P	General purpose cleaning solution for agriculture, 20 mL sachet (25 pcs.)
HI700663P	Cleaning solution for soil deposits, 20 mL sachet (25 pcs.)
HI700664P	Cleaning solution for humus deposits, 20 mL sachet (25 pcs.)
Electrode Storage Solution	
HI70300G	GroLine electrode storage solution, 20 mL sachet (25 pcs.)
HI70300-023	GroLine electrode storage solution, 230 mL
Electrode Fill Solution	
HI9071	Gelled bridge electrolyte, 13 mL dropper bottle
Other Accessories	
HI7051M	Soil preparation solution, 230 mL
HI721319	Soil auger

RECOMMENDATIONS FOR USERS

Before using this product, make sure it is entirely suitable for your specific application and for the environment in which it is used. Any variation introduced by the user to the supplied equipment may degrade the tester's performance. For your and the tester's safety do not use or store it in hazardous environments.

WARRANTY

HI9810302 is warranted for a period of one year against defects in workmanship and materials when used for its intended purpose and maintained according to instructions. This warranty is limited to repair or replacement free of charge. Damage due to accidents, misuse, tampering, or lack of prescribed maintenance is not covered. If service is required, contact your local Hanna Instruments office. If under warranty, report the model number, date of purchase, serial number, and the nature of the problem. If the repair is not covered by the warranty, you will be notified of the charges incurred. If the tester is to be returned to Hanna Instruments, first obtain a Returned Goods Authorization (RGA) number from the Technical Service department and then send it with shipping costs prepaid. When shipping any product, make sure it is shipped back in compliance with shipping regulations, thoroughly cleaned and free of any chemicals, and is properly packaged for complete protection.

MAN9810302 10/21

Hanna Instruments reserves the right to modify the design, construction or appearance of its products without advance notice.

CERTIFICATION

All Hanna® instruments conform to the CE European Directives.

Disposal of Electrical and Electronic Equipment. The product should not be treated as household waste. Instead, hand it over to the appropriate collection point for the recycling of electrical and electronic equipment, which will conserve natural resources.

Disposal of waste batteries. This product contains batteries, do not dispose of them with other household waste. Hand them over to the appropriate collection point for recycling. Ensuring proper product and battery disposal prevents potential negative consequences for the environment and human health. For more information, contact your city, your local household waste disposal service, or the place of purchase.



RoHS
compliant



Regulatory Notices for stand-alone, Bluetooth, low-energy modules

All modules have identical operation. All references to US FCC Rules and Canadian RSS standards on device classification and operation, listed here under BMD-300 Module, apply to all models noted here. Remove the battery cover to check the installed module.

BMD-300 Module United States (FCC) FCC IC: 2AA9B04 This device complies with FCC Rules, Part 15, Subpart C "Intentional Radiators" and Subpart B, Chapter 815.105. This equipment has been tested and found to comply with the limits for a Class A digital device, pursuant to part 15 of the FCC Rules. These limits are designed to provide reasonable protection against harmful interference when the equipment is operated in a commercial environment. This equipment generates, uses, and can radiate radio frequency energy and, if not installed and used in accordance with the instruction manual, may cause harmful interference to radio communications. Operation of this equipment in a residential area is likely to cause harmful interference in which case, users are required to correct the interference at their own expense.	
Canada (ISED) IC: 12208A-04 This device complies with Industry Canada license exempt RSS standard(s). Operation is subject to the following two conditions: (1) this device may not cause interference, and (2) this device must accept any interference, including interference that may cause undesired operation of the device. Le présent appareil est conforme aux CNR d'Industrie Canada applicables aux appareils radio exempts de licence. L'exploitation est autorisée aux deux conditions suivantes: (1) l'appareil ne doit pas produire de brouillage, et (2) l'utilisateur de l'appareil doit accepter tout brouillage radioélectrique subi, même si le brouillage est susceptible d'en compromettre le fonctionnement.	
Australia / New Zealand (RCM) BMD-300 complies with the AS/NZS 4268:2017.	
Japan (MIC) R210-106799	South Korea (KCC) R-CRIM-Rgd-BMD-300
Brazil (ANATEL): Contains ANATEL approved module # 00820-21-05903.	Mexico (IFETEL): Este equipo contiene el módulo con IFT #: NYCE/CI/0146/17/TS.
BMD-350 Module	
United States (FCC) FCC IC: 2AA9B05	Canada (ISED) IC: 12208A-05
Japan (MIC) R210-108944	Australia / New Zealand (RCM) BMD-350 complies with the AS/NZS 4268:2017
Eurasia (EAC) EA3C N RU JL-US.HA27.B.00650/18	Brazil (ANATEL) Contains ANATEL approved module # 00857-21-05903
China (SRRC) CMIIT ID: 2018DJ7255	Mexico (IFETEL) Este equipo contiene el módulo con IFT #: RCPRI8W18-1491
ANNA-B112 Module	
United States (FCC) FCC IC: XPYANNAB1	Canada (ISED) IC: 8595A-ANNAB1
Taiwan (NCC) Contains Transmitter Module 內含發射模組: CCAI8LP2200T2	South Korea (KCC) R-C-ULX-ANNA-B112
South Africa (ICASA) ICASA TA-2019/1203 Approved	China (SRRC) CMIIT ID: 2021DJ6698
Australia / New Zealand (ACMA) ANNA-B1 complies with AS/NZS 4268:2012 standard	
Japan (MIC) R204-810005	The module complies with the Japanese Technical Regulation Conformity Certification of Specified Radio Equipment (ordinance of MPT N°. 37, 1981), Article 2, Paragraph 1, Item 19 "2.4 GHz band wide band low power data communication system".
03850-19-05903	Brazil (ANATEL) This equipment operates on a secondary basis and, consequently, must accept harmful interference, including from stations of the same kind, and may not cause harmful interference to systems operating on a primary basis.



World Headquarters

Hanna Instruments Inc.
Highland Industrial Park
584 Park East Drive
Woonsocket, RI 02895 USA
www.hannainst.com

MAN9810302

Printed in ROMANIA