

# Touch the Future of Gel and Blot Imaging!

The introduction of the new **ChemiDoc-It<sup>TS2</sup>** and **GelDoc-It<sup>TS2</sup> Imagers** marks a new generation of simplicity and imaging control for researchers. These Imagers successfully combine a powerful computer, integrated touch screen and software interface into an easy-to-use plug and play unit. The image capture functions are presented in a straightforward and efficient workflow format enabling users to spend less time hassling with equipment and more time conducting research and analysis. Users can be assured of quick and simple image capture with a touch of the screen!

The built-in computer creates a networkable stand-alone system. Users can capture images in one compact unit, save to the USB stick and transfer the images to a separate computer for further documentation or analysis.

## Touch Screen Simplicity

Researchers can perform simplified imaging with the integrated image capture software and touch screen interface.

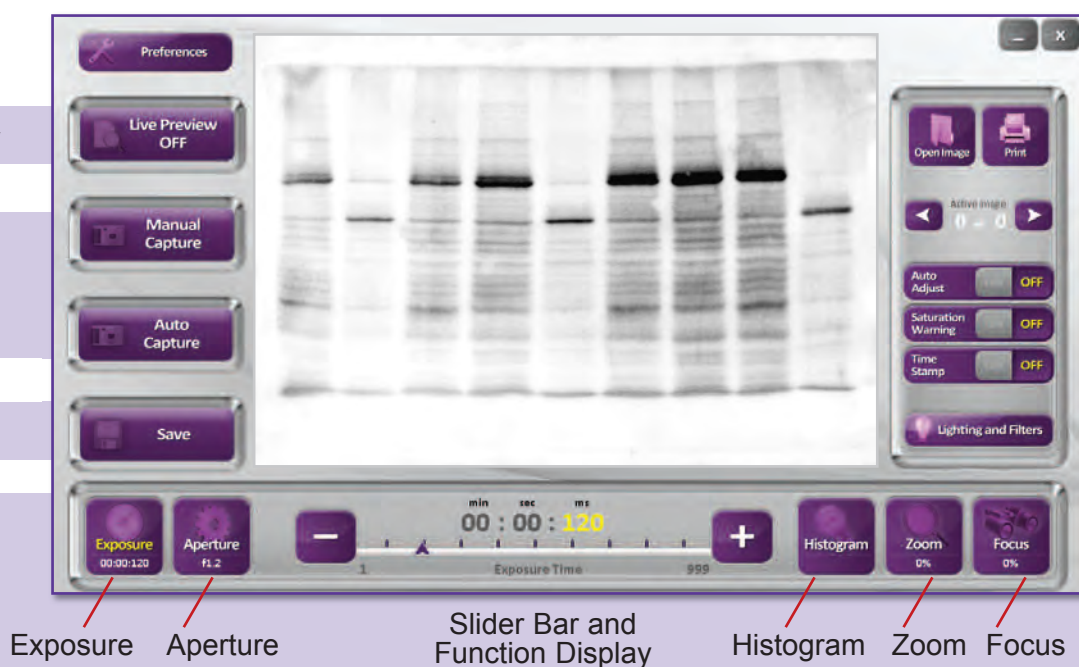
- **Ease of Use:** The straightforward interface guides users through live preview, capture and save functions. When a function is active, the software clearly highlights the status for ease of workflow and navigation.
- **Touch Screen:** Users can easily control settings with the user-intuitive touch screen interface.

1 Live Preview

2 Capture

3 Save

### Function Control Panel



The action control panel lets users fine tune exposure, aperture, zoom and focus functions which can be adjusted with a touch of the screen. All settings in process are clearly displayed.

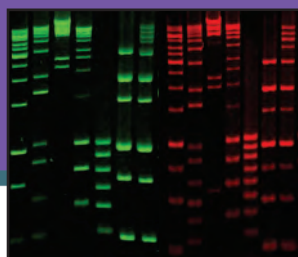
Additional software functionality is a click away with the conveniently located buttons.

- **Auto Adjust:** This efficient tool automatically adjusts the image histogram for achieving ideal imaging results.
- **Saturation Warning:** A colored overlay shows oversaturated areas of an image, alerting users to adjust the exposure and/or aperture settings.
- **Lighting and Filters:** This menu allows selection of epi and transillumination lighting and emission filters.
- **Preferences:** The user preferences window allows adjustment of default system settings such as location for saving captured images.

Alexa PAGE



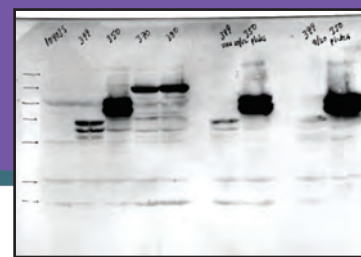
GelGreen/GelRed



Ethidium Bromide



Autoradiograph



## ChemiDoc-It<sup>TS2</sup> Imagers

### Blot and Gel Imaging with a High Sensitivity Cooled CCD Camera

**Large Touch Screen** is integrated into the system with a generous 15.6" for maximizing imaging functionality

**TS2 Software** features an intuitive control panel for simplifying the imaging workflow

**USB and SD Ports** are located on the side of the cabinet for saving images

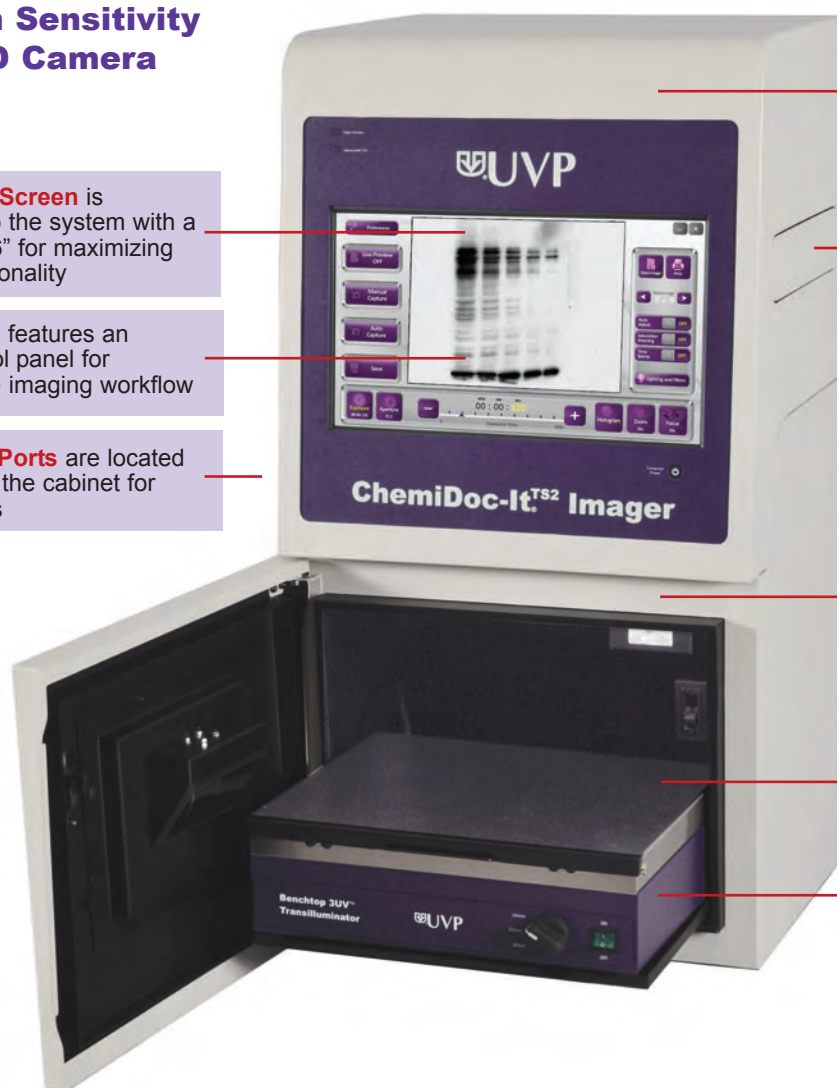
**Cooled CCD Camera** and lens, built into the cabinet, offer high sensitivity for chemiluminescence imaging applications

**Emission Filters** are placed in the easy access five-position filter tray. An ethidium bromide filter is standard; additional filters are available

**Epi White Lights** are built into the cabinet for lighting and focusing purposes

**Chemi Tray** enables placement of samples such as chemiluminescent Western blots

**Transilluminator** is placed on the easy access roll-out tray. Choose from models with single UV or multiple UV wavelengths and filter sizes from 21x26cm to 25x26cm



### System Selection

**ChemiDoc-It<sup>TS2</sup>** Imagers are configured with specific cameras for optimizing blot and gel imaging results. Select from highly sensitive cooled CCD cameras for enhanced imaging applications:

- **ChemiDoc-It<sup>TS2</sup> 810** with class-leading image resolution enables shorter exposure times in fluorescence and chemiluminescence applications
- **ChemiDoc-It<sup>TS2</sup> 510** delivers affordable, high sensitivity for a variety of chemiluminescence and fluorescence imaging applications

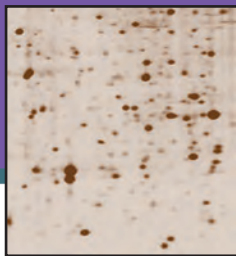
### ChemiDoc-It<sup>TS2</sup> Applications

- Chemiluminescence
- Fluorescence
- Colorimetric
- Multiplex

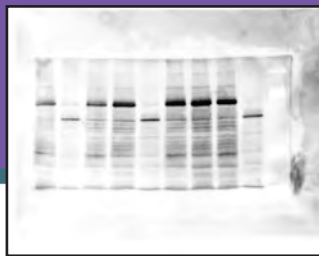
Colonies



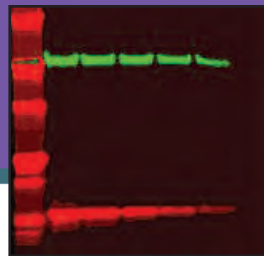
2D Silver Stain



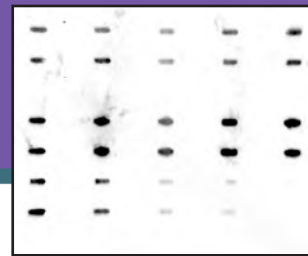
Chemi Western Blot



Multiplex



Chemi DNA Northern Blot



## GelDoc-It<sup>TS2</sup> Imagers

### Gel Imaging with a High Resolution CCD Camera

**Large Touch Screen** is integrated into the system with a generous 15.6" for maximizing imaging functionality

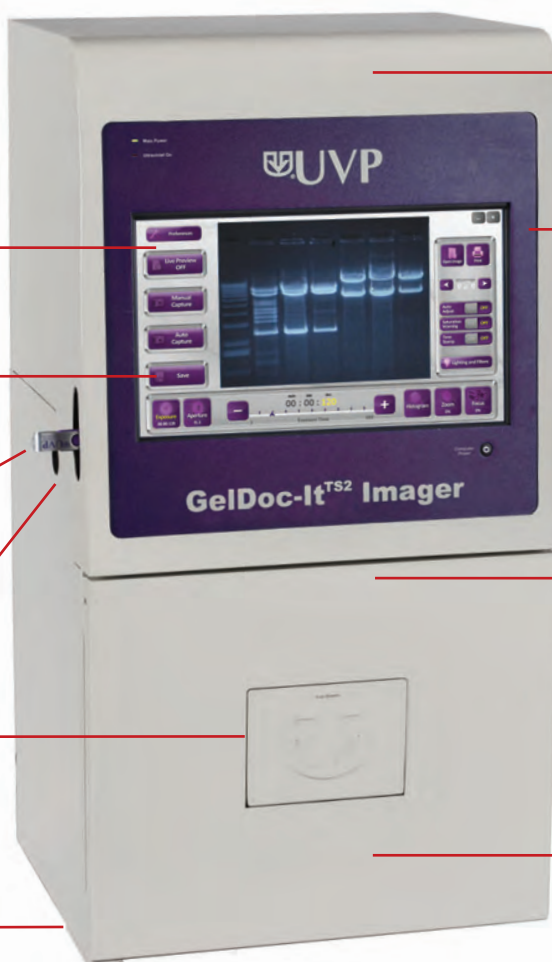
**TS2 Software** features an intuitive control panel for simplifying the imaging workflow

**USB and SD Ports** are located on the side of the cabinet for saving images

**Access Port** provides access for the optional BioLite guides

**Viewing Window** blocks UV while allowing visualization of samples without opening the cabinet door

**Compact, Light-Tight Cabinet** is ideal for multiple users and multiple applications



**CCD Camera** and lens, built into the cabinet, offer high resolution for fluorescence imaging applications

**Emission Filters** are placed in the easy access five-position filter tray. An ethidium bromide filter is standard; additional filters are available

**Epi White Lights** are built into the cabinet for lighting and focusing purposes

**Transilluminator** is placed on the easy access roll-out tray. Choose from models with single UV or multiple UV wavelengths and filter sizes from 21x26cm to 25x26cm

### System Selection

**GelDoc-It<sup>TS2</sup> Imager** is configured with a high resolution CCD camera for fluorescence and colorimetric imaging applications.

### Multiple Imaging Applications

Researchers performing colorimetric visible light imaging with either Imager can add the optional LED White Light Plate. This plate supplies uniform white light transillumination.

For multiplex imaging with **ChemiDoc-It<sup>TS2</sup> Imagers**, researchers can add the BioLite MultiSpectral Light Source for excitation of a wide range of fluorophores.

### GelDoc-It<sup>TS2</sup> Applications

- Fluorescence
- Colorimetric

# Modular Design Components

The modular design of the **ChemiDoc-It<sup>TS2</sup>** and **GelDoc-It<sup>TS2</sup> Imagers** enables users to select components and add optional equipment as necessary for specific imaging applications.



**Choice of UV Transilluminator**

**Transilluminator** models feature single or 3UV<sup>TM</sup> wavelengths. Filter sizes range from 21x26cm up to 25x26cm. Additional models are available.



**Emission Filters**

A slide-out, five-position **emission filter tray** is conveniently located on the side of the cabinet. An ethidium bromide filter is standard. Easily access the tray to add filters for myriad imaging applications. Contact UVP for filter information.



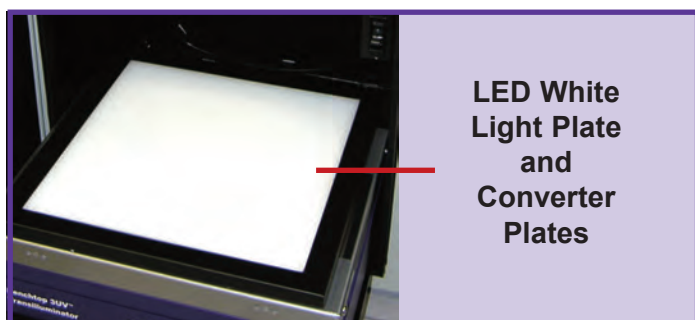
**UV Lamp Modules**

Mount the optional **UV lamp modules** into the cabinet for epi UV illumination. The lamp modules can be removed for hand held use. Select from longwave (365nm), shortwave (254nm) or combination 254/365nm lamp modules.



**BioLite<sup>TM</sup> MultiSpectral Light Source**

The optional **BioLite** supplies powerful directed epi illumination or transillumination via fiber optic cable. A wide range of filters are available to meet specific wavelengths. Contact UVP for BioLite details as well as standard and custom filters sets.



**LED White Light Plate and Converter Plates**

The optional **LED White Light Plate** plugs into the cabinet and emits <5% coefficient of variance (CV) for viewing samples such as autoradiographs, Coomassie Blue and Silver Stains. Converter Plate are also available:

- **UV to White Light Plate:** Converts UV to white light
- **Visi-Blue<sup>TM</sup> Plate:** Converts UV to 460-470nm blue light
- **UV to UV Plate:** Converts 302nm UV to 365nm UV



**Thermal Printer**

Generate archive quality, 256 gray scale prints with this compact thermal printer. Glossy and matt papers are available.

**Gel Tools** are excellent instruments for researchers working with gels. Tools available include Gel-Cutter, Gel-Scooper, Gel-Ruler and Gel-Trays.



# Ordering Information & Specifications

**System configurations may vary by country. Contact UVP for system details.** Installation Qualification and Operational Qualification (IQ/OQ) documentation is available.

## System Specifications:

Monitor:	15.6" touch screen
Software:	TS2 image capture software
Computer:	Integrated into system; Windows 7
Save Options:	USB stick or transfer images via network (wireless or wired)
Darkroom:	Light tight Access port for adding BioLite source Chemi tray (with ChemiDoc-It only)
Epi Light:	White Light
Transillumination:	Choice of Models - Single or Multiple UV Filter sizes range from 21x26 to 25x26cm
Emission Filters:	EtBr (580-630nm) Five position filter wheel Other filters available
Dimensions (WDH):	17.5 x 14.5 x 33.5 in. (44.4 x 36.8 x 85.1cm)
VisionWorks LS	User license included
Analysis Software:	with ChemiDoc-It <sup>TS2</sup> Optional for GelDoc-It <sup>TS2</sup> Additional licenses available

## Ordering Information

### GelDoc-It<sup>TS2</sup> 310 Imager

**System includes:** Camera and lens, darkroom, EtBr filter, epi white light, choice of transilluminator, USB flash drive, keyboard and mouse. **System configurations may vary by country.** Contact UVP for system details.

## Camera Specifications:

Camera:	<b>GelCam 310</b>
CCD Bit Depth:	12 bit
File Bit Depth:	16 bit
Grayscale:	65,536
Pixel Resolution:	1600 x 1200
Megapixels:	2.0
Lens:	12.5-77mm

## Ordering Information

### ChemiDoc-It<sup>TS2</sup> 810 Imager ChemiDoc-It<sup>TS2</sup> 510 Imager

**Systems include:** Camera and lens, darkroom, EtBr filter, epi white light, choice of transilluminator, USB flash drive, keyboard and mouse. A single user VisionWorksLS software license is included for quantitative image analysis. **System configurations may vary by country.** Contact UVP for system details.

## Camera Specifications:

Camera:	<b>MegaCam 810</b>	<b>BioChemi 510</b>
CCD Bit Depth:	16 bit	16 bit
File Bit Depth:	16 bit	16 bit
Grayscale:	65,536	65,536
Pixel Resolution:	3296 x 2472	2048 x 2048
Megapixels:	8.1	2.1
Peltier Cooling:	35°C below ambient	35°C below ambient
Binning:	1x1 thru 8x8	1x1 thru 8x8
Quantum Eff.		
Peak / 425nm:	50% / 44%	55% / 45%
Lens:	50mm f/1.2 or 30mm f/1.4	12.5-75mm f/1.2 zoom



# WolfLabs

**Pricing on any accessories shown can be found by keying the part number into the search box on our website.**

The specifications listed in this brochure are subject to change by the manufacturer and therefore cannot be guaranteed to be correct. If there are aspects of the specification that must be guaranteed, please provide these to our sales team so that details can be confirmed.

**[www.wolflabs.co.uk](http://www.wolflabs.co.uk)**

**Tel : 01759 301142**

**Fax : 01759 301143**

**[sales@wolflabs.co.uk](mailto:sales@wolflabs.co.uk)**

Please contact us if this literature doesn't answer all your questions.