

UVP GelDoc-It²

Upgradeable, modular design for a variety of imaging applications.

Gel Imaging

Four position filter wheel;
includes an Ethidium Bromide
filter (optional filters available)

Configurable with the UVP
eLITE Light Source (optional)

Unique gel viewer window
blocks harmful UV light

Transilluminator is placed on
the easy-access roll out tray

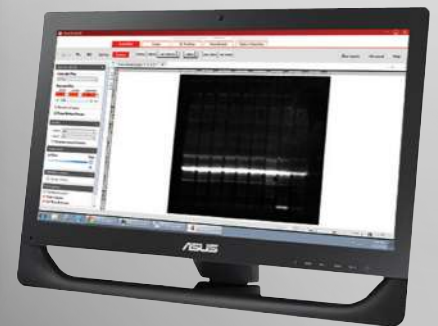
Single UV, 2UV or 3UV
wavelengths available

High resolution 5.0 MP camera

Automated or manual f/1.2
zoom lens

Overhead white light with
optional UV

External computer
(order separately)



VisionWorks Software for image
acquisition, analysis and reporting



UVP GelDoc-It² Applications and Accessories



Blue Light Gels



DNA Gels



Protein Gels



Colony Plates

eLITE MultiSpectral Light Source

The eLITE Xe MultiSpectral Light Source is compatible with all imagers to create brilliant, high-intensity light excitation for fluorescence, bioluminescence and multiplex applications.

- The 150W Xenon excitation source features a wide range of wavelengths from Red, Green, Blue (RGB) to NIR
- Excitation filters available for numerous applications, including GFP, RFP, CY and IR dyes; system accommodates up to 8 excitation filters
- BioLite Transilluminator available for additional applications such as 2D gels
- BioLite Xe provides brilliant, stable excitation up to 800nm for many common Near IR applications

VisionWorks[®] Acquisition and Analysis Software

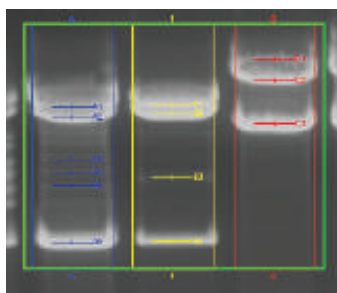
Unlimited copies of the comprehensive VisionWorks software package for image capture, enhancement and analysis is included with the UVP GelDoc-It² Imaging Systems.

Easy-to-Use Templates for Acquisition

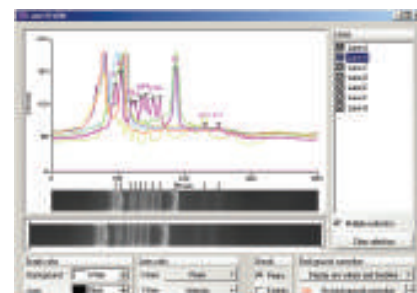
- One-touch image capture templates
- Customizable templates for automating system settings (lighting, focus, zoom, filter position, etc)
- Unlimited template storage capability

Image Enhancement and Analysis

- High accuracy quantitation features such as 1D analysis, area density analysis, calibration and colony counting
- Extensive image enhancement settings for creating publication quality images
- VisionWorks offers history tracking logs for 21 CFR Part 11 compliance
- Create reports showing extensive analysis results including Molecular Weight (MW), Rf, band intensities and area density calculations. Export data to Excel.



Use the 1D Analysis function to automatically find and label lanes and bands. Easily adjust the parameters.



Use the 1D Analysis Lane Profile Graph to generate graphical representation of lanes and bands data.

Darkroom Specifications:

Dimensions: 17.4W x 15.75D x 26.3H in (47 x 38 x 81cm)
Voltage: 100-115V or 230V

Software:

Capabilities: Image acquisition and extensive 1D quantitative analysis, area density, colony counting

Tools: Macros, templates, image enhancement and annotation

Documentation: Create reports/export data

Compatibility: Windows 7, 8 or 10 (32 or 64 bit)

UV Transilluminator:

Select filter size: 20 x 20cm, 21 x 26cm or 25 x 26cm
UV wavelengths: Single UV (302nm), 2UV or 3UV (254/302/365nm)

Camera Specifications:

Megapixels: 5.0 MP
Lens: 18-48mm f/1.2 zoom
Image Resolution: 2592 x 1944 pixels
CCD Bit Depth: 12 bit
File Bit Depth: 16 bit

** Camera specifications subject to change without notice. Contact AJ US for current camera specifications.



Wolflabs

Wolf Laboratories Limited

www.wolflabs.co.uk

Tel: 01759 301142

Fax: 01759 301143

sales@wolflabs.co.uk



Use the above details to contact us if this literature doesn't answer all your questions.

Pricing on any accessories shown can be found by keying the part number into the search box on our website.

The specifications listed in this brochure are subject to change by the manufacturer and therefore cannot be guaranteed to be correct. If there are aspects of the specification that must be guaranteed, please provide these to our sales team so that details can be confirmed.

