

UVP DigiDoc-It

Economically designed for image capture & documentation

DigiCam camera
mounts under the
protective cover

Lightweight molded hood
enclosure with handles

Hood sits on the
Transilluminator (select
from several models)

Viewport for seeing the
fluorescent gels

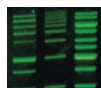
Access door

UVP Transilluminator
PLUS models feature 25
watt, 302nm UV

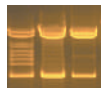


The DigiDoc-It System is economically designed for image capture and documentation of gels and plates. Analytik Jena's exclusive software loads on the user's PC, controls the camera functions and offers many image enhancement and reporting features.

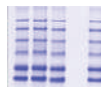
Image Capture, Image Enhancement and Report Generation



Blue Light Gels



DNA Gels



Protein Gels

- High resolution digital color camera captures brilliant color images
- Exclusive software controls the camera and enables image capture, enhancement, annotation and archiving
- Quickly see live preview of gel images on the computer monitor
- Select a large format Transilluminator PLUS; for gels up to 25 x 30cm, select the DigiDoc-It with the TFM-30V, for gels up to 20 x 40cm, the TFM-40V.

VisionWorks® Acquisition and Analysis Software

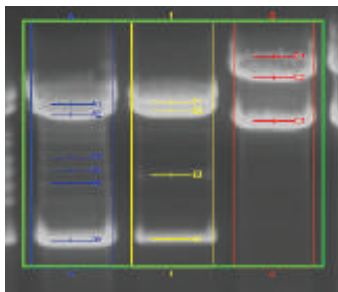
Unlimited copies of the comprehensive VisionWorks software package for image capture, enhancement and analysis is included with the UVP GelDoc-It² Imaging Systems.

Easy-to-Use Templates for Acquisition

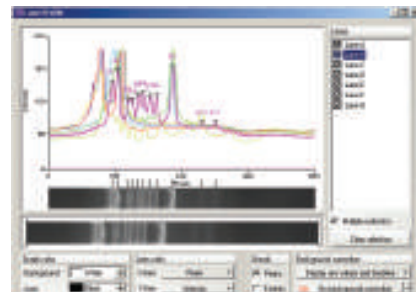
- One-touch image capture templates
- Customizable templates for automating system settings (lighting, focus, zoom, filter position, etc)
- Unlimited template storage capability

Image Enhancement and Analysis

- High accuracy quantitation features such as 1D analysis, area density analysis, calibration and colony counting
- Extensive image enhancement settings for creating publication quality images
- VisionWorks offers history tracking logs for 21 CFR Part 11 compliance
- Create reports showing extensive analysis results including Molecular Weight (MW), Rf, band intensities and area density calculations. Export data to Excel.



Use the 1D Analysis function to automatically find and label lanes and bands. Easily adjust the parameters.



Use the 1D Analysis Lane Profile Graph to generate graphical representation of lanes and bands data.

Specifications:

Camera: Digi Cam 130; 17.9 MP resolution camera*

*For current camera specifications go to: us.analytik-jena.com or contact AJ US.

Dimensions: 17.75W x 16.6 x 12D in. (Outside)
16.5W x 15.35 x 10.75D in. (Inside)

Emission Filters: EtBr Red 570-640nm

Software: Camera controls
Image capture
Image enhancement

Aj's software requires Microsoft Windows 7, 8 or 10 (32-bit or 64-bit).

UV Transilluminator:

Select filter size: 20 x 20cm, 21 x 26cm or 25 x 30cm
UV wavelengths: Single UV (302nm), 2UV or 3UV* (254/302/365nm)

*Compatible only with addition of the drawer assembly. Contact customer service for additional information.



WolfLabs

Pricing on any accessories shown can be found by keying the part number into the search box on our website.

The specifications listed in this brochure are subject to change by the manufacturer and therefore cannot be guaranteed to be correct. If there are aspects of the specification that must be guaranteed, please provide these to our sales team so that details can be confirmed.

www.wolflabs.co.uk

Tel : 01759 301142

Fax : 01759 301143

sales@wolflabs.co.uk

Please contact us if this literature doesn't answer all your questions.