

thermo scientific



# Thermo Scientific Medifuge Centrifuge

Fits in. Stands out.

**ThermoFisher**  
SCIENTIFIC

# Thermo Scientific™ Medifuge™ small benchtop centrifuge

## Fits in.

- To your routine clinical and life science applications, with a 2-in-1 hybrid rotor
- To your timeline, with four customizable programs to quickly run routine protocols
- To your space, with its compact footprint

## Stands out.

- Unique Thermo Scientific™ DualSpin™ rotor features hybrid design with interchangeable fixed angle and swinging buckets
- Large, brightly-lit display is easy to read and fast one-click lid closure helps simplify operation
- Three selectable deceleration profiles including brake-off option are designed to optimize separation



## 2-in-1 Design: Discover outstanding versatility with the DualSpin rotor

Perform both your routine clinical and life science applications in one platform with the DualSpin rotor. This lightweight 8-place rotor features a unique hybrid design with interchangeable fixed angle and swinging buckets, and is able to accommodate 1.4 mL to 15 mL tubes with two spacer options. Run common clinical IVD blood tubes, gel tubes, 10 mL standard syringes and 15 mL conical tubes—all in one versatile centrifuge with just one rotor. You can even run both fixed angle and swinging buckets at the same time to compare separation performance. A simple turn of the knob secures the rotor in place, without the need for any tools.



**Unique DualSpin rotor with hybrid design**

## Optimize your workflow with features designed to simplify operation

With the Medifuge small benchtop centrifuge, you can program up to 4 sets of custom run parameters to easily and quickly perform your routine protocols. Additionally, the centrifuge has 3 deceleration profiles including standard, soft and brake-off options, designed to optimize separation.



**Fast one-click centrifuge lid closure**

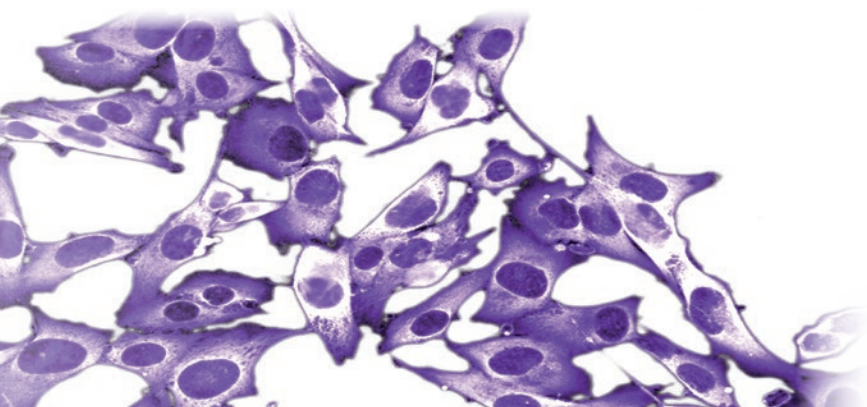
## Promote safety and environmental sustainability in your lab

- Emergency lid lock release available in case of power failure
- Quiet operation at noise level less than 56 dBA
- Lightweight composite rotor is easy to handle and helps save energy during acceleration/deceleration
- Conforms to the latest clinical and safety standards, such as UL, CE and IVD<sup>1</sup>

<sup>1</sup> See full list of standards & certifications in specifications table.



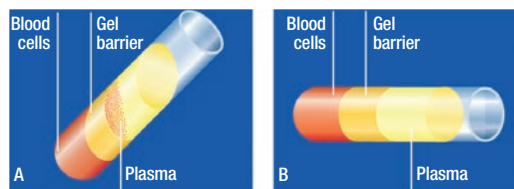
**Large, brightly-lit display with intuitive controls**





## Perform both your routine clinical and life science applications with one versatile centrifuge

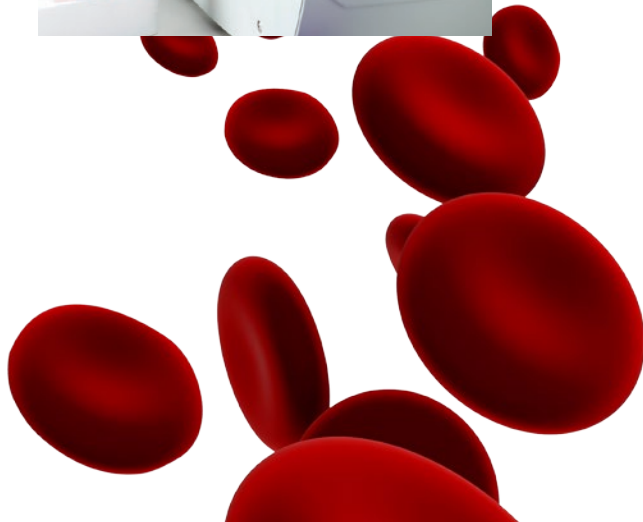
- Platelet-poor plasma (PPP) separation
- Urinalysis
- Clinical chemistry analysis
- Hematology analysis
- Serum preparation using gel tube
- Cell culture pelleting



**Figure 1. Blood collection tubes with gel barrier. A.** Using fixed angle rotor with gel barrier blood collection tubes can result in plasma contamination **B.** The swinging bucket rotor purifies plasma with no red blood contamination

Using the swinging buckets in the DualSpin rotor, the Medifuge small benchtop centrifuge is particularly well-suited to serum preparation using gel tubes. After centrifugation, the gel provides an effective barrier between the blood cells and serum. The tubes can then be stored or transported with minimum contamination to a laboratory for further testing.

In addition to routine blood collection tubes, the DualSpin rotor's fixed angle bucket can accommodate 15 mL conical tubes, supporting life science sample separations that require low g-force, such as cell pelleting.



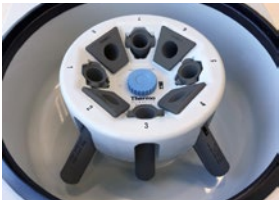


# Thermo Scientific Medifuge small benchtop centrifuge

Tube type	Volume	Diameter	Length	Fixed angle			Swinging bucket	
				Direct fit	Green spacer	Yellow spacer	Direct fit	Green spacer
BD™ Tubes								
BDCPT tube	4.0 mL	13 mm	100 mm	✓			✓	
BD CPT tube	8.0 mL	16 mm	125 mm	✓				
BD urine tube	4.0 mL	13 mm	75 mm			✓		✓
BD urine tube	8.0 mL	16 mm	100 mm	✓			✓	
BD Vacutainer™ blood tube	2.0–4.5 mL	13 mm	75 mm			✓		✓
BD Vacutainer blood tube	3.5–7.0 mL	13 mm	100 mm	✓			✓	
BD Vacutainer blood tube	7.5–10.0 mL	16 mm	100 mm	✓			✓	
Greiner™ VACUETTE™ Tubes								
Greiner VACUETTE tube	2.0–4.0 mL	13 mm	75 mm			✓		✓
Greiner VACUETTE tube	5.0–6.0 mL	13 mm	100 mm	✓			✓	
Greiner VACUETTE tube	8.0–9.0 mL	16 mm	100 mm	✓			✓	
Sarstedt™ Monovette™ Tubes								
Sarstedt S-Monovette blood tube	1.2–1.4 mL	8 mm	66 mm			✓		✓
Sarstedt S-Monovette blood tube	2.6–4.3 mL	13 mm	65 mm			✓		✓
Sarstedt S-Monovette blood tube	2.7–3.0 mL	11 mm	66 mm			✓		✓
Sarstedt S-Monovette blood tube	2.7–4.3 mL	13 mm	75 mm			✓		✓
Sarstedt S-Monovette blood tube	4.0–5.0 mL	15 mm	75 mm			✓		✓
Sarstedt S-Monovette blood tube	4.5–5.0 mL	11 mm	92 mm	✓			✓	
Sarstedt S-Monovette blood tube	4.9 mL	13 mm	90 mm	✓			✓	
Sarstedt S-Monovette blood tube	7.5–8.2 mL	15 mm	92 mm		✓		✓	
Sarstedt S-Monovette blood tube	9.0–10.0 mL	16 mm	92 mm		✓		✓	
Sarstedt V-Monovette urine tube	4.0 mL	13 mm	75 mm			✓		✓
Sarstedt V-Monovette urine tube (round base)	6.0 mL	13 mm	100 mm	✓			✓	
Sarstedt V-Monovette urine tube (round base)	9.5 mL	15 mm	100 mm	✓				
Sarstedt V-Monovette urine tube (conical base)	9.5 mL	15 mm	100 mm				✓	
Sarstedt V-Monovette urine tube (round base)	10.0 mL	15 mm	100 mm				✓	
Sarstedt V-Monovette urine tube (conical base)	10.0 mL	15 mm	100 mm	✓				
Other Tubes								
Blood/Urine tube	4.0–7.0 mL	16 mm	75 mm			✓		✓
Open tube	5.0 mL	12 mm	75 mm			✓		✓
Glass tubes (DIN)	7.0 mL	12 mm	100 mm	✓			✓	
Glass tubes	10.0 mL	16 mm	100 mm	✓			✓	
Conical cell culture tube	15.0 mL	17 mm	120 mm	✓				
Glass tubes	15.0 mL	16 mm	125 mm	✓				
Glass tubes (DIN)	15.0 mL	16 mm	100 mm	✓			✓	
Open tube	15.0 mL	17 mm	100 mm	✓			✓	
Generic tube	–	17.5 mm	125 mm	✓				
Generic tube	–	17.5 mm	100 mm		✓			
Generic tube	–	17.5 mm	90 mm			✓		
Generic tube	–	17 mm	110 mm				✓	
Generic tube	–	17 mm	85 mm					✓
Standard syringe	10.0 mL	17.5 mm	85 mm	✓				

Specifications	
Maximum capacity	8 x 15 mL (fixed angle) 8 x 10 mL (swinging bucket)
Maximum speed	300-4,900 rpm, adjustable in increments of 100 rpm
Maximum RCF	3,114 x g (fixed angle) 3,490 x g (swinging bucket)
Time setting	1-99 minutes, in increments of 1 minute; HOLD
Temperature range	2°C to 40°C
Control system	Microprocessor
User interface	Large, brightly-lit LED display
Program memory	4
Acceleration profile	1 (standard)
Deceleration profiles	3 (standard, soft, brake-off)
Acceleration/deceleration rates*	24/37 seconds (fixed angle) 24/31 seconds (swinging bucket)
Noise level	<56 dBA (swinging bucket)
Power consumption	100-130 W, voltage dependent
Dimensions (H x W x D)	240 x 325 x 450 mm (9.5 x 12.8 x 17.7 in)
Weight	15.5 kg (34.1 lb)
Standards	IEC 61010-1, IEC 61010-2-020, IEC 61010-2-101, EN 61326-1, EN ISO 13485
Certifications	UL, CE, RoHS, CSA, IVD, FDA class 1

\*Deceleration time at standard curve.



DualSpin rotor with fixed angle buckets



DualSpin rotor with swinging buckets



Yellow spacers



Green spacers

Ordering information

Product	Cat. No.
Centrifuge packages	
Medifuge centrifuge package, 230 V, 50/60 Hz	75008800
Medifuge centrifuge package, 120 V, 60 Hz	75008801
Each Medifuge centrifuge packages includes:	
- Medifuge small benchtop centrifuge	
- DualSpin rotor body	
- Fixed angle buckets (set of 8)	
- Swinging buckets (set of 8)	
- Green/short spacers (set of 8)	
- Yellow/long spacers (set of 8)	

Product	Cat. No.
Replacement parts	
DualSpin rotor with fixed angle and swinging bucket sets	75008810
DualSpin rotor body	75008813
DualSpin fixed angle buckets (set of 8)	75008815
DualSpin swinging buckets (set of 8)	75008816
Green/short spacers (set of 8)	75008817
Yellow/long spacers (set of 8)	75008818



# WolfLabs

**Pricing on any accessories shown can be found by keying the part number into the search box on our website.**

The specifications listed in this brochure are subject to change by the manufacturer and therefore cannot be guaranteed to be correct. If there are aspects of the specification that must be guaranteed, please provide these to our sales team so that details can be confirmed.

**[www.wolflabs.co.uk](http://www.wolflabs.co.uk)**

**Tel : 01759 301142**

**Fax : 01759 301143**

**[sales@wolflabs.co.uk](mailto:sales@wolflabs.co.uk)**

Please contact us if this literature doesn't answer all your questions.