



Mixer/Mill®

- High-energy ball mill that pulverizes hard or brittle samples to analytical fineness
- Equipped with forced-air cooling and safety interlock system for operator protection
- Steel housing protects the clamp mechanism and rugged construction ensures a long life of heavy use
- Shock-mounted motor enables benchtop operation



Spex SamplePrep is an Antylia Scientific company. Find out more at antylia.com.



Mixer/Mill®

High-Energy Ball Mills

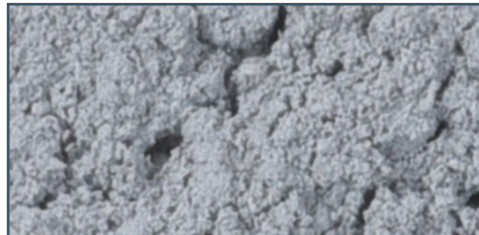
The Mixer/Mill is a high-energy ball mill available with a single clamp, or dual clamps for double capacity, that grinds from 0.2 to 10 grams (per clamp) of dry, brittle samples, reducing them to analytical fineness. Samples in grinding vials are shaken with grinding media in a complex motion that combines back-and-forth swings with short lateral movements in a figure-8 pattern. This motion produces strong G-forces that can pulverize the toughest rocks, slags and ceramics.

Typical applications: mechanical alloying, nanomilling, slurry grinding, blending powders, mixing emulsions, and mechanochemistry.

Typical samples: rocks, minerals, sand, cement, slag, ceramics, catalyst supports, glass, pharmaceuticals, plant tissue, animal tissues, cannabis, seeds, paints, and inks.

Before & After Samples

Stone



LCD screen with manual start/stop buttons



Capable of pulverizing the toughest samples



Clamp swings in a back-and-forth lateral “figure-8” movement



Vibration detection switch shuts down the mill in the event of mechanical failure

Specifications

8000D Dual-Clamp Mixer/Mill

Net Weight	93 lb (42 kg)
Dimensions	25 in (64 cm) x 21 in (54 cm) x 14 in (36 cm)
Voltage	115 V/60 Hz or 230 V/50Hz
Power Cord	3-prong grounded plug, 115V 60Hz or 2-prong European plug, 230V50Hz
CE Approved	Yes
Motor	1/3 hp, 1725 RPM at 60 Hz, 1425 RPM at 50 Hz
Clamp Movement	2 5/16 in (5.9 cm) back-and-forth, 1 in (2.5 cm) side-to-side
Clamp Speed	1060 cycles/minute (115 V) or 875 cycles/minute (230 V)

8000M Single-Clamp Mixer/Mill

Net Weight	77 lb (35 kg)
Dimensions	21 in (53 cm) x 22 in (56 cm) x 14 (36 cm)
Voltage	115 V/60 Hz or 230 V/50 Hz
Power Cord	3-prong grounded plug, 115 V/60 Hz or 2-prong European plug, 230 V/50 Hz
CE Approved	Yes
Motor	1/3 hp, 1725 RPM at 60 Hz, 1425 RPM at 50 Hz
Clamp Movement	2 5/16 in (5.9 cm) back-and-forth, 1 in (2.5 cm) side-to-side
Clamp Speed	1060 cycles/minute (115 V) or 875 cycles/minute (230 V) Alternate pulley supplied with 230 V model for 1060 cpm operation

Ordering Information

EQUIPMENT	
Product Name	Part Number
8000D Mixer/Mill, Dual-Clamp, 115 V	8000D-115
8000D Mixer/Mill, Dual-Clamp, 230 V	8000D-230
8000M Mixer/Mill, Single-Clamp, 115 V	8000M-115
8000M Mixer/Mill, Single-Clamp, 230 V	8000M-230



8000D Mixer/Mill®
Dual-Clamp High-Energy Ball Mill



8000M Mixer/Mill®
Single-Clamp High-Energy Ball Mill



Wolflabs

Wolf Laboratories Limited

www.wolflabs.co.uk

Tel: 01759 301142

Fax: 01759 301143

sales@wolflabs.co.uk



Use the above details to contact us if this literature doesn't answer all your questions.

Pricing on any accessories shown can be found by keying the part number into the search box on our website.

The specifications listed in this brochure are subject to change by the manufacturer and therefore cannot be guaranteed to be correct. If there are aspects of the specification that must be guaranteed, please provide these to our sales team so that details can be confirmed.

