

SPEX SamplePrep 8530 Enclosed Shatterbox®

8530-115 Enclosed Shatterbox® - For 115 V/60 Hz operation

**8530-230 Enclosed Shatterbox® - For 230 V/50 Hz operation,
CE Approved**

- Features a cam-activated clamp that requires only moderate hand pressure to secure the grinding dish in the Shatterbox and is adjustable to secure containers of different heights
- LCD display with environmentally safe, push-button membrane switch
- Soundproof enclosure reduces noise levels
- Equipped with a safety interlock system and lockable casters
- Wide choice of grinding containers, sold separately



Specifications:

Dimensions:	19 in (48 cm) x 19 in (48 cm) x 40 in (102 cm)
Weight	225 lbs. gross (102 kg)
Voltage:	115 V/60 Hz or 230 V/50 Hz
Motor:	½ horsepower @ 835 RPM
Power Cord:	3-prong standard North American plug for 115 V/60 Hz version 2-prong European CEE 7/7 plug for 230 V/50 Hz version

SPEX SamplePrep 8500 Shatterbox®

8500-115 Shatterbox® – For 115 V/60 Hz operation

8500-230 Shatterbox® – For 230 V/50 Hz operation

- Features a cam-activated clamp that requires only moderate hand pressure to secure the grinding dish in the Shatterbox and is adjustable for containers of different heights
- Perforated metal skirt provides ventilation for continuous operation, and a rubber cover protects against dust
- Includes an anti-skid wood/rubber floor mount and an extra set of drive belts
- Grinding containers are sold separately. Timer is not supplied



Specifications:

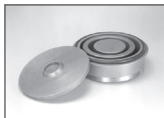
Dimensions:	13 in. (33 cm) x 13 in.(33 cm) x 23 1/2 in. (60 cm)
Weight	135 lbs. gross (61 kg)
Voltage:	115 V/60 Hz or 230 V/50 Hz
Motor:	½ horsepower @ 835 RPM
Power Cord:	3-prong standard North American plug for 115 V/60 Hz version 2-prong European CEE 7/7 plug for 230 V/50 Hz version

Accessories

Grinding Dishes

8501 Hardened Steel Grinding Container

Grinding container with puck, dish, and lid made of 52-100 hardened tool steel. 6.9 in. diameter x 2.9 in. high, 17.5 lbs. (17.5 cm x 7.5 cm, 8 kg). Nominal volume 340 mL, recommended grinding load 20-50 mL. Includes puck, ring, dish with O-ring gasket, and lid.



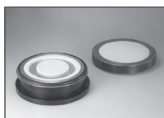
8504 Tungsten Carbide Grinding Container

Grinding container lined with tungsten carbide. Dish and lid are steel shells with tungsten carbide inserts; puck and ring are solid tungsten carbide. 6.9 in. diameter x 3.2 in. high, 29 lbs. (17.5 cm x 8 cm, 12.5 kg). Nominal volume 240 mL, recommended grinding load 20-50 mL. Includes puck, ring, dish with O-ring gasket, and lid.



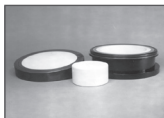
8505 Alumina Ceramic Grinding Container

Grinding container lined with 99.5% alumina ceramic. Steel lid and aluminum dish are lined with alumina ceramic plates, puck is solid alumina ceramic. 6.3 in. diameter x 3.2 in. high, 11 lbs. (15.2 cm x 8 cm, 5 kg). Nominal volume 170 mL, recommended grinding load 15-40 mL. Includes puck, dish with O-ring gasket, and lid.



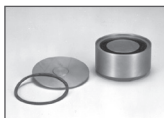
8506 Zirconia Ceramic Grinding Container

Grinding container lined with Mg-stabilized zirconia ceramic. Steel lid and aluminum dish are lined with zirconia ceramic, puck is solid zirconia ceramic. 6 in. diameter x 3.2 in. high, 13 lbs. (15.2 cm x 8 cm, 6 kg). Nominal volume 170 mL, recommended grinding load 15-40 mL. Includes puck, dish with O-ring gasket, and lid.



8507 Small Hardened Steel Grinding Container

Small grinding container with puck, dish and lid made of 52-100 hardened steel, 3.6 in. diameter x 2.3 in. high, 4 lbs. (9 cm x 5.4 cm, 1.9 kg). Nominal volume 90 mL, recommended grinding load 2-20 mL. Includes puck, dish with gasket, and lid. Must be used either one or three at a time with 8507R Rack.



8508 Small Tungsten Carbide Grinding Container

Small grinding container with puck, dish and lid all made of solid tungsten carbide. Dish has reinforcing aluminum band. 3.6 in. diameter x 2.3 in. high, 7.7 lbs. (9.2 cm x 5.9 cm, 3.5 kg). Nominal volume 80 mL, recommended grinding load 2-20 mL. Includes puck, dish, and lid. Must be used either one or three at a time with 8507R Rack.



8521 Large Hardened Steel Grinding Container

Large grinding container with dish, ring, puck, and lid, all made of 52-100 hardened tool steel. 8 in. diameter x 3.3 in. high, 29 lbs. (20.3 cm x 8.2 cm, 13 kg). Nominal volume 650 mL, recommended load 30-100 mL. Includes puck, ring, dish with O-ring gasket and lid.



P/N	Material	Sample Volume	Typical Sample Weight	Suitable for Blending	Suitable for Slurry Grinding
8501	Hardened Steel	20-50 mL	50 g	Y	Yes
8507	Hardened Steel	5-20 mL	15 g	Y	Yes
8521	Hardened Steel	30-100 mL	90 g	Y	Yes
8504	Tungsten Carbide	20-60 mL	50 g	Y	Yes
8508	Tungsten Carbide	5-20 mL	15 g	Y	Yes
8505	Alumina Ceramic	15-40 mL	40 g	Y	Yes
8506	Zirconia Ceramic	15-40 mL	40 g	Y	Yes



WolfLabs

Pricing on any accessories shown can be found by keying the part number into the search box on our website.

The specifications listed in this brochure are subject to change by the manufacturer and therefore cannot be guaranteed to be correct. If there are aspects of the specification that must be guaranteed, please provide these to our sales team so that details can be confirmed.

www.wolflabs.co.uk

Tel : 01759 301142

Fax : 01759 301143

sales@wolflabs.co.uk

Please contact us if this literature doesn't answer all your questions.