



Portaclave[®]™ Portable Autoclaves

Specifications for :

ST1528E ST2228E ST3028E ST5035E
ST1528V ST2228V ST3028V ST5035V

Design Features

- 15, 22, 30 or 50 litres
- Manual or Vario digital Controller
- Robust space saving design
- Single phase 'plug & play'
- Compact and fully portable
- No plumbing needed
- Minimal Maintenance
- Grade 316 stainless steel chamber
- Suitable for Culture Media

Vario Controller

- Variable Temperature 100°C—121°C
- Variable Time: 1—99 minutes
- Pre-set Cycles:
 - 30 mins @ 115°C
 - 15 mins @ 121°C
 - 30 mins @ 121°C
 - 60 mins @ 115°C



Capacities and dimensions

Model Name	Portaclave 15E	Portaclave 22E	Portaclave 30E	Portaclave 50E
Model No.	ST1528E	ST2228E	ST3028E	ST5035E
Capacity	15 L	22 L	30 L	50L
Autoclave Weight	19kg	21kg	23kg	33kg
Export Case Size	470w x 680h x 470d	470w x 880h x 470d	470w x 880h x 470d	560w x 870h x 560d
Overall Dimensions	370w x 485h x 390d	370w x 600h x 390d	370w x 730h x 390d	440w x 735h x 460d
Chamber Dimensions	280 Ø x 245d	280 Ø x 360d	280 Ø x 490d	350 Ø x 520d
Water Capacity	2L	2L	2L	4L
1L Media Bottles	4	4	8	14
Basket Dimensions	240 Ø x 220d	240 Ø x 220d	240 Ø x 440d	320 Ø x 230d
Digital Controller	No	No	No	No

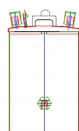
Capacities and dimensions

Model Name	Portaclave 15V	Portaclave 22V	Portaclave 30V	Portaclave 50V
Model No.	ST1528V	ST2228V	ST3028V	ST5035V
Capacity	15 L	22 L	30 L	50L
Autoclave Weight	19kg	21kg	23kg	34kg
Export Case Size	470w x 680h x 470d	470w x 880h x 470d	470w x 880h x 470d	560w x 870h x 560d
Overall Dimensions	370w x 485h x 390d	370w x 600h x 390d	370w x 730h x 390d	440w x 735h x 460d
Chamber Dimensions	280 Ø x 245d	280 Ø x 360d	280 Ø x 490d	350 Ø x 520d
Water Capacity	2L	2L	2L	4L
1L Media Bottles	4	4	8	14
Basket Dimensions	240 Ø x 220d	240 Ø x 220d	240 Ø x 440d	320 Ø x 230d
Digital Controller	Yes (Vario)	Yes (Vario)	Yes (Vario)	Yes (Vario)





Human Scale



Safe Design Operating Limits

Model	Portaclave 15	Portaclave 22	Portaclave 30	Portaclave 50
Model No.	ST1528	ST2228	ST3028	ST5035
Max working temperature	121 C	121 C	121 C	121 C
Min working temperature	7 C	7 C	7 C	7 C
Max ambient temperature	28 C	28 C	28 C	28 C
Min ambient temperature	11 C	11 C	11 C	11 C
Max hydraulic pressure	2.0 Bar	2.0 Bar	2.0 Bar	2.0 Bar
Max working pressure	1.3 Bar	1.3 Bar	1.3 Bar	1.3 Bar

Site Requirements

Electrical site requirement: 13amp Socket Outlet

Model	Portaclave 15	Portaclave 22	Portaclave 30	Portaclave 50
Model No.	ST1528	ST2228	ST3028	ST5035
Voltage	230V	230v	230v	230v
Phase Requirement	1ph/N 50/60 Hz	1ph/N 50/60 Hz	1ph/N 50/60 Hz	1ph/N 50/60 Hz
Power Consumption	2kw	2kw	2kw	3kw
Fuse Rating	13 amp	13 amp	13amp	13amp



General Requirements

- Sodium Chloride must not exceed a level greater than 500 ppm.
- Use regular mains water only. DO NOT USE distilled or RO water.

Complying Standards

- PED Cat 1 Module B+D Notified Body: British Engineering No. 0040
- Harmonised Standards applied: EMC BS EN 61326
- Community directives applied : Pressure Equipment Directive PED 2014/68/EU (formerly PED 97/23/EC)
- Designed in accordance with PD5500 (formerly BS5500) & BS2646
- PM73 Lid Locking Devices
- BS3546 Part 101 1987
- ISO 9001: 2008
- CE Marked

Information is subject to change to suit different options added. This information is correct as of 8th November 2018, E & OE



Wolf Laboratories Limited

www.wolflabs.co.uk

Tel: 01759 301142

Fax: 01759 301143

sales@wolflabs.co.uk



Use the above details to contact us if this literature doesn't answer all your questions.

Pricing on any accessories shown can be found by keying the part number into the search box on our website.

The specifications listed in this brochure are subject to change by the manufacturer and therefore cannot be guaranteed to be correct. If there are aspects of the specification that must be guaranteed, please provide these to our sales team so that details can be confirmed.

