

# Q800R3

DNA Shearing Sonicator

QSONICA

- **High throughput**
- **Uses standard sample tubes**
- **2 year warranty**



## APPLICATIONS:

- **DNA shearing for Next-gen sequencing**
- **Chromatin shearing**
- **ChIP**
- **ChIP-seq**
- **RNA-seq**
- **Protein extraction**
- **Cell lysis**

## KEY INSTALLATIONS:

- **Broad Institute**
- **NIH**
- **Harvard Medical School**
- **Broad Institute**
- **Memorial Sloan Kettering**
- **Max Planck Institute**
- **Ludwig Institute UCSD**
- **University of Cambridge**
- **Washington Univ. St. Louis**
- **California Institute of Technology**
- **Shanghai Inst. for Biological Sciences**

Qsonica has over 45 years of experience manufacturing ultrasonic equipment with thousands of customers around the world. All products are designed and manufactured in the USA and include a full 2-year warranty.

The Q800R3 is our 2nd generation DNA and Chromatin shearing system. Improvements include an enhanced user-friendly design and quieter operation while remaining thousands of dollars less than the competition.

Samples can be sheared to a range of fragment sizes (150bp – 3kb). The system is compatible with commercially available sample tubes and is capable of processing up to 18 samples at one time. Multiple tube rack options can accommodate 50ul - 1ml sample volumes using a variety of standard sample tubes.

The Q800R3 is a complete package including a chiller to control temperature, digital operating system with programmable memory, high intensity ultrasonics and sound reducing enclosure.

# Chromatin Shearing

Example protocols and results are based on customer feedback.

## Sample Protocols:

### Mammalian Chromatin

**Cell Type:** HEK 293T (2) 10cm dishes  
70-80% confluent

**Total Sample Volume:** 300ul

**Fixation Time:** 1% Formaldehyde, 13 min

**Sonicator Amplitude Setting:** 70%

**Sonication Pulse Rate:** 15 seconds On,  
45 seconds Off

**Total Sonication On Time:** 30 min

### Yeast Chromatin

**Cell Type:** Wild type *S. pombe* cells  
grown to an OD of 1.3-1.5 in YEA.

**Total Sample Volume:** 300ul

**Fixation Time:** 1% Formaldehyde, 15 min

**Sonicator Amplitude Setting:** 100%

**Sonication Pulse Rate:** 20 seconds On,  
40 seconds Off

**Total Sonication On Time:** 30 min

### *C. elegans* Chromatin

**Cell Type:** *C. elegans* culture;  
Nuclear extract 1mg/ml

**Total Sample Volume:** 500ul

**Fixation Time:** 2% Formaldehyde, 20 min

**Sonicator Amplitude Setting:** 70%

**Sonication Pulse Rate:** 30 seconds On,  
30 seconds Off

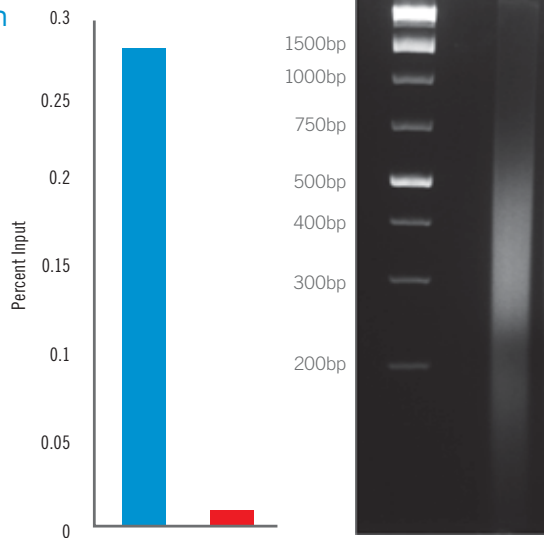
**Total Sonication On Time:** 20 min

## Sample Results:

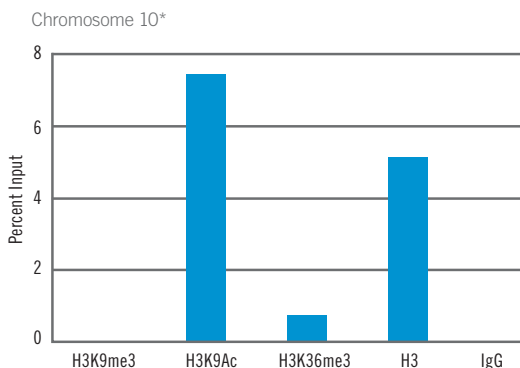
### *C. elegans* Chromatin Prep & Chip

500 ul Nuclear Extract,  
10ul Pol II Ab (8WG16)

■ Protein-Coding Gene  
■ Ribosomal RNA Gene



### Mammalian Chromatin Prep & Chip

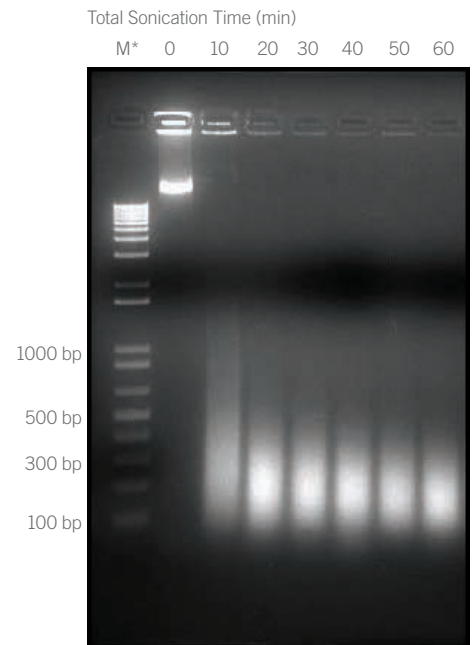


Chr10 Primer sequences: Forward - TCCTTCTCCCAACATCAGC Reverse - GATGTCGCTCCGAATCTTG  
Antibodies Used: H3K9me3 (abcamab8898), H3K9Ac (upstate 07-352), H3K36me3 (abcam  
ab9050), H3 (abccamab1791)

\* Average of two independent replicate chromatin in pane



### Yeast Chromatin Prep & Chip



\* Note: Lane M is the NEB 1kb Plus ladder

# DNA Shearing

Example protocols and results are based on customer feedback.

## Sample Protocols:

### Bacterial Genomic DNA

**Cell Type / Concentration:** *E.coli* / 250ng

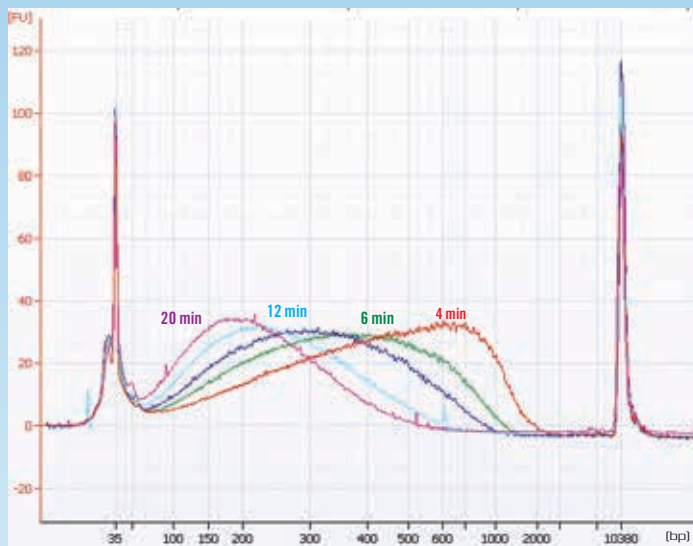
**Sonication Pulse Rate:** 15 seconds On, 15 seconds Off

**Total Sample Volume:** 200ul in 0.5ml tubes

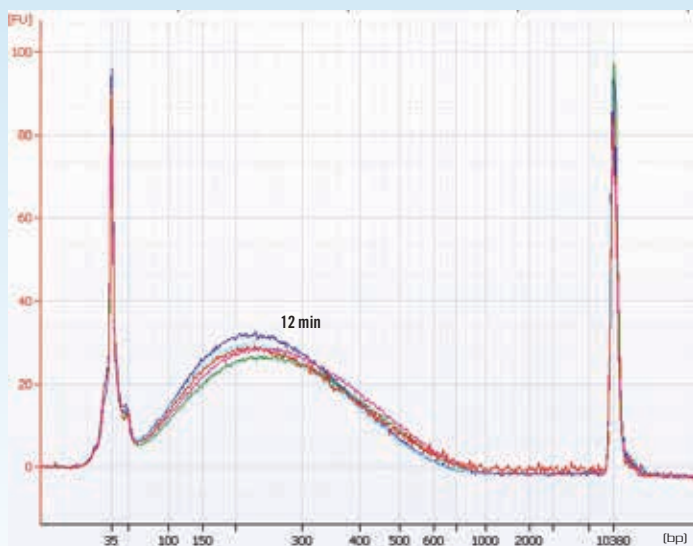
**Total Sonication On Time:** As indicated below

**Sonicator Amplitude Setting:** 20%

Fragmentation Over Time



Testing Independent Replicates



### Human Skeletal Myoblast Genomic DNA

**Cell Type / Concentration:** LHCN-M2 Skeletal Myoblast / 200ng

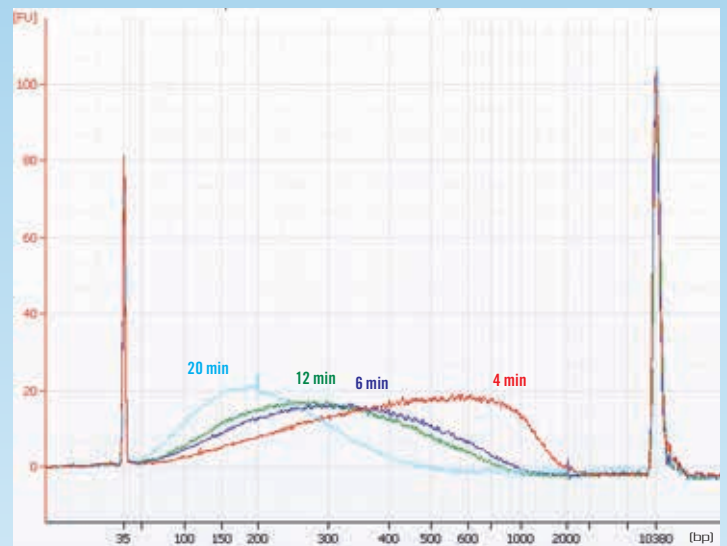
**Sonication Pulse Rate:** 15 seconds On, 15 seconds Off

**Total Sample Volume:** 200ul in 0.5ml tubes

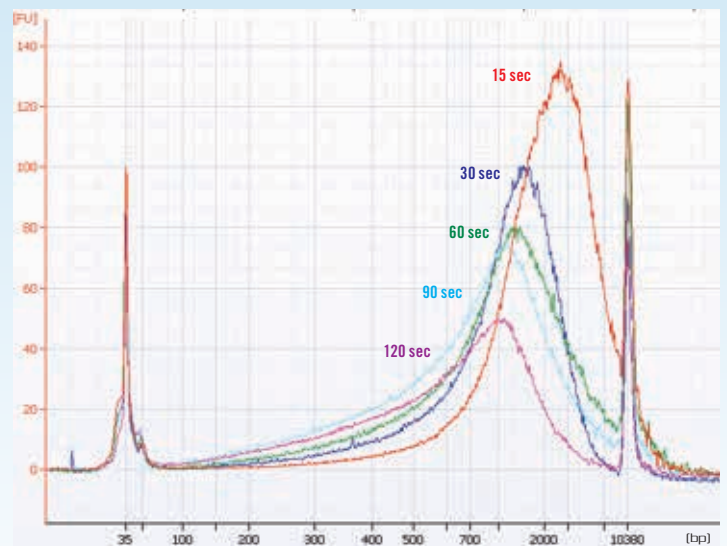
**Total Sonication On Time:** As indicated below

**Sonicator Amplitude Setting:** 20%

Fragmentation Over Time



Fragmentation Over Time





Digital operating system with programmable memory



Completely integrated system includes a Chiller to control processing temperatures

Rotating sample tube holder with internal lighting

## Sample Tube Rack Options for the Q800R3 System

### #4256

8 tube holder  
(1.5mL Polystyrene tubes)



### #4255

12 tube holder  
(0.5mL PCR tubes)



### #4262

18 tube holder  
(0.3mL PCR tubes)



## Technical Specifications:

<b>Power Rating:</b>	750 Watts
<b>Frequency:</b>	20 kHz
<b>Programmable Timer:</b>	1 second to 10 hours
<b>Voltage:</b>	110V*, 50/60Hz

*\*Specify desired voltage for export*

### Dimensions:

Generator	8.00" W x 15.25" L x 8.50" H
Enclosure	11.50" W x 12.00" L x 20.00" H
Chiller	11.00" W x 13.00" L x 13.00" H

## Additional information on our website:

- Sample Protocols
- Optimization tips
- Video
- Customer Feedback
- Recent Publications

**QSONICA**  
SONICATORS

Qsonica, LLC.







**Wolflabs**

# Wolf Laboratories Limited

[www.wolflabs.co.uk](http://www.wolflabs.co.uk)

Tel: 01759 301142

Fax: 01759 301143

[sales@wolflabs.co.uk](mailto:sales@wolflabs.co.uk)



**Use the above details to contact us if this literature doesn't answer all your questions.**

**Pricing on any accessories shown can be found by keying the part number into the search box on our website.**

The specifications listed in this brochure are subject to change by the manufacturer and therefore cannot be guaranteed to be correct. If there are aspects of the specification that must be guaranteed, please provide these to our sales team so that details can be confirmed.

