



MDF-MU300H-PE

Biomedical ECO

-30°C Freezers

274 L



Same level of reliability with even better performance and efficiency

Biomedical ECO -30°C Freezers have natural refrigerants and Inverter Compressors and, therefore, minimise energy consumption, reduce environmental impact and save money on running costs.

Efficient Refrigeration

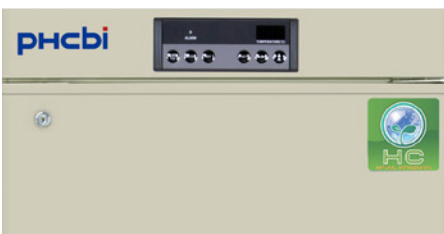
Naturally occurring hydrocarbon (HC) refrigerants provide more efficient cooling due to their high latent heat of evaporation. As well as improved performance this leads to reduced power consumption and energy costs.

Inverter Technology

Biomedical ECO -30°C Freezers utilize Inverter Compressors that can run at different speeds to maximise cooling performance under different conditions, while reducing the energy consumption of the freezer.

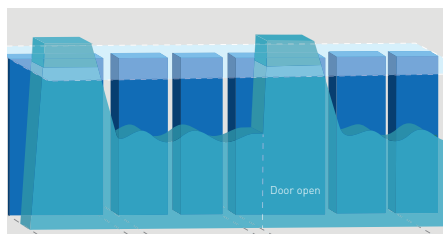
User Friendly Design

Multi-function control panel features an integrated alarm system, self diagnostic functions and a clear display of current temperature. Storage containers are supplied as standard for increased convenience.



Reduced Running Costs

Efficient refrigerants decrease power consumption for lower running costs and reduced air conditioning requirements.



Stable Temperatures

Inverter compressors turn on and off less frequently for optimum stability. Ideal for samples that are highly sensitive to temperature fluctuations.



Sample Security

Effective storage of biomedical, research and laboratory samples. Safety features and an easy-to-use design ensure unsurpassed reliability and functionality.

BIOMEDICAL ECO -30°C Freezer

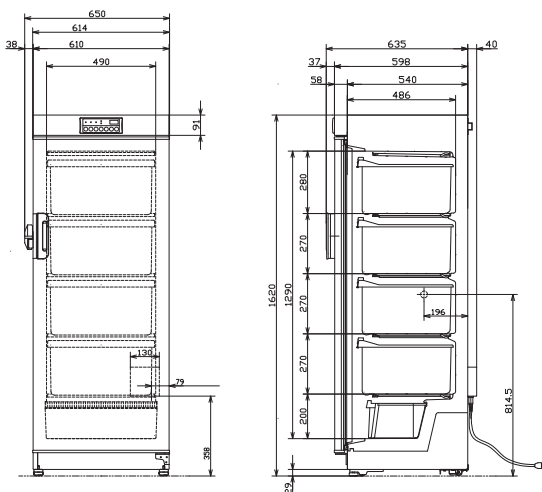


Inverter Compressors

While conventional freezers use single speed compressors which cycle on and off, **Biomedical ECO** Freezers contain inverter compressors that can run at different speeds to maximise cooling performance under different conditions. As the compressor is not cycling on and off as frequently the temperature uniformity of the freezer is significantly improved. Inverter compressors have the added advantage of reducing the energy consumption of the freezer which is not only better for the environment but also helps to reduce running costs.

Integrated Control Centre

The microprocessor control system is secure, easy to use and comprehensive and can be accessed through a front mounted control panel. The microprocessor has a memory back-up so after a power failure, operation resumes at pre-outage settings. The self diagnostics function will display an error code in the case of an abnormality.



Model Number		MDF-MU300H-PE
External Dimensions (W x D x H) ¹⁾	mm	610 x 598 x 1620
Internal Dimensions (W x D x H)	mm	490 x 486 x 1290
Volume	litres	274
Net Weight	kg	76
Capacity	2" boxes	150
Performance		
Cooling performance ²⁾	°C	-30
Temperature setting range	°C	-18 to -35
Temperature control range ²⁾	°C	-20 to -30
Control		
Controller		Microprocessor, non-volatile memory
Display		LED
Temperature sensor		Thermistor
Refrigeration		
Refrigeration system		Direct
Compressors	W	250 (inverter control)
Refrigerant		HC
Insulation material		PUF
Insulation thickness	mm	60
Construction		
Exterior Material		Painted Steel
Interior Material		ABS resin
Outer Door	qty	1
Outer Door Lock		Y
Shelves	qty	4
Containers / baskets	(L/M/S)	4/0/1
Max. load - per shelf /container/basket	kg	30
Max. load - total	kg	80
Access Port	qty	1
Access Port Position		Left
Access Port Diameter	∅ mm	30
Casters	qty	4 (2 leveling feet)
Alarms (R = Remote Alarm, V = Visual Alarm, B = Buzzer Alarm)		
Power Failure		V-B-R (Optional)
High Temperature		V-B-(R ⁴⁾
Low Temperature		V-B-(R ⁴⁾
Electrical and Noise Level		
Power Supply	V	230
Frequency	Hz	50
Noise Level ³⁾	dB [A]	40
Options		
Temperature recorders		
- Circular type		MTR-G85C-PE
- Chart paper		RP-G85-PW
- Ink pen		PG-R-PW
- Recorder housing		MPR-S740T-PW
- Continuous strip type		MTR-4015LH-PE
- Chart paper		RP-40-PW
- Ink pen		-
- Recorder housing		-
External mounting power failure alarm		MPR-48B1-PE

¹⁾ Exterior dimensions of main cabinet only, excluding handle and other external projections - See dimensions drawings on website for full details.

²⁾ Air temperature measured at freezer centre, ambient temperature +30°C, no load.

³⁾ Nominal value - Background noise 20dB[A].

⁴⁾ Requires MPR-48B1-PW



Wolflabs

Wolf Laboratories Limited

www.wolflabs.co.uk

Tel: 01759 301142

Fax: 01759 301143

sales@wolflabs.co.uk



Use the above details to contact us if this literature doesn't answer all your questions.

Pricing on any accessories shown can be found by keying the part number into the search box on our website.

The specifications listed in this brochure are subject to change by the manufacturer and therefore cannot be guaranteed to be correct. If there are aspects of the specification that must be guaranteed, please provide these to our sales team so that details can be confirmed.

