

# Best of Both Worlds

Introducing the New Brunswick™ S41i Incubator Shaker,  
the only CO<sub>2</sub> incubator with a New Brunswick Shaker inside

# The Perfect Combination

## New Brunswick™ S41i CO<sub>2</sub> Incubator Shaker

The New Brunswick S41i combines the best of two worlds: a highly innovative shaker and the functionality of a CO<sub>2</sub> incubator. For over a decade New Brunswick CO<sub>2</sub> incubators have provided researchers with a reliable, easy-to-use system for culturing cells. Continuing this tradition is the New Brunswick S41i CO<sub>2</sub> Incubator Shaker, designed specifically for non-adherent cell culture applications. The S41i combines precise temperature and CO<sub>2</sub> control with one of the best laboratory shakers available. The result: high cell yields and viability.

## The perfect combination

Like all New Brunswick CO<sub>2</sub> incubators, the S41i is loaded with advanced features that make protecting your cells the highest priority. A unique six-sided direct-heating profile provides gentle convection circulation of the chamber atmosphere for exceptionally uniform temperature control. And a deep-drawn inner chamber without welds reduces contamination risk and allows simple and efficient cleaning.

But what makes the S41i really special is the built-in New Brunswick shaker. Combining our advanced CO<sub>2</sub> incubator and shaker technologies creates a highly stable environment for reliable cell growth.

## Advanced features are built in, not added on

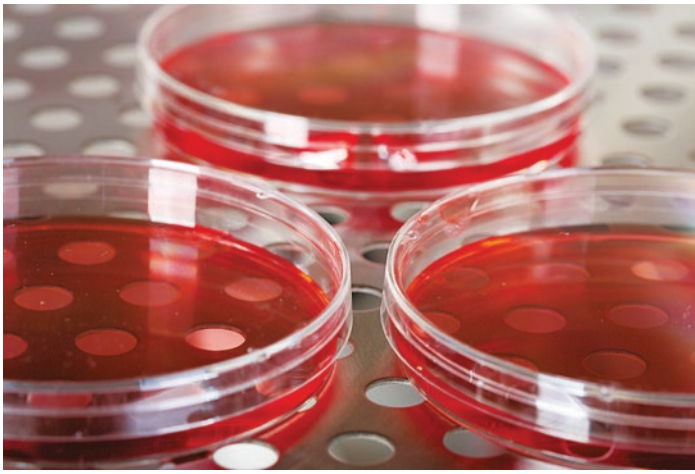
- > Fanless design eliminates a common source of repeated contamination and expensive HEPA filters
- > Sealed inner/outer doors and advanced PI control maintain temperature accuracy and uniformity while minimizing costly gas consumption
- > High temperature disinfection (HTD) protects against bacterial contamination
- > InfraRed (IR) CO<sub>2</sub> sensor offers specific measurement and accurate control of CO<sub>2</sub> levels

## Backed by world-class service and support

- > Extended (local) warranties
- > Global service and support with highly trained Eppendorf representatives and qualified third party partners



The advanced and intuitive touchscreen not only provides a clear and accurate determination of the conditions your cells are exposed to, but also allows you to track performance over time as well as many additional features and functions



Removable shelf lets you simultaneously shake suspension cells and incubate adherent cells under the same conditions



Glass inner door allows viewing of the cultures without compromising sample and environmental integrity



Easy-to-clean seamless stainless steel chamber eliminates a potential source of contamination



World famous triple eccentric drive provides stable, uniform and vibration free motion — connected to the shaking platform by four encapsulated rods, it's located below the chamber ensuring that heat generated by the drive does not affect the critical environment within the chamber

#### Technical specifications

Temperature	
Range	4 °C above ambient to 50 °C
Control	± 0.1 °C
Stability	± 0.1 °C at 37 °C
Uniformity (on platform)	± 0.25 °C at 37 °C (ambient temperature between 18 and 25 °C)
CO <sub>2</sub>	0.2 to 20 %
Orbit	2.5 cm (1 in)
Shaking speed	25 - 400 rpm
Dimensions	
Platform	612 x 356 mm (24 x 14 in)
Overall	848 x 834 x 730 mm (33.4 x 32.8 x 28.7 in)
Net weight	152 kg (335 lb)
Ports	25 mm access port for instrumentation/probes, USB for communication/data logging
Installation position	Floor, under bench or double stacked
Included accessories	Stainless steel humidity pans, removable
Data logging	Optional BioCommand® SFI software for data logging and reports

#### Ordering information

Order no.	Description
S41120010	New Brunswick™ S41i Incubator Shaker, 120 V, 60 Hz
S411230011	New Brunswick™ S41i Incubator Shaker, 230 V, 50 Hz

#### Options

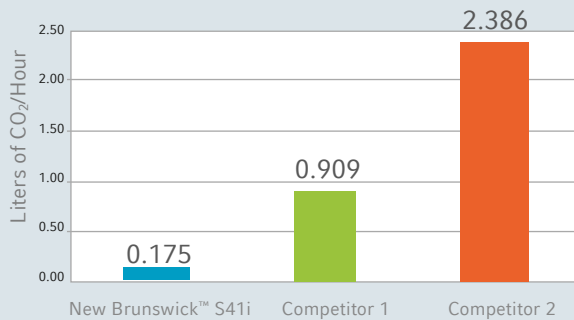
P0628-6502	Stacking kit
P0628-6181	Additional perforated shelf

#### Interchangeable platforms, 612 x 356 mm (24 x 14 in)

M1334-9920	Universal platform
M1334-9921	125 mL Dedicated platform
M1334-9922	250 mL Dedicated platform
M1334-9923	500 mL Dedicated platform
M1334-9924	1 L Dedicated platform
M1334-9925	2 L Dedicated platform
M1334-9926	2.8 L Dedicated platform
M1334-9927	4 L Dedicated platform

# Seeing is Believing

## Comparison of CO<sub>2</sub> Consumption

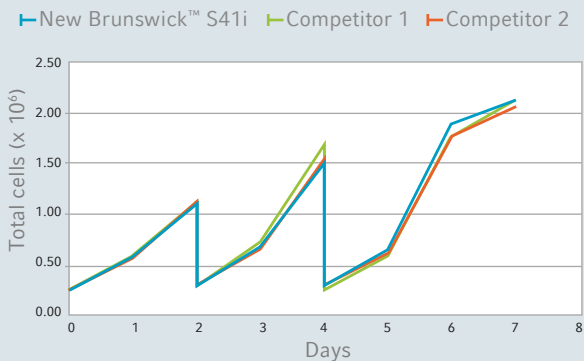


### Better for your budget and the environment

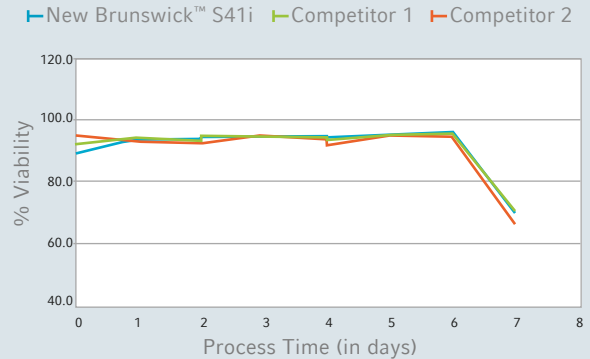
The New Brunswick S41i Incubator Shaker minimizes CO<sub>2</sub> consumption without compromising cell growth and viability. Our performance tests show that the S41i significantly reduces costly gas consumption when compared to competitor models, making it better for your budget and the environment.

Performance tests conducted by Eppendorf in March 2012 using the New Brunswick S41i Incubator Shaker and comparable competitor models. All tests were performed under the same conditions.

## Cell Growth Comparison - Hybridoma Cell



## Comparison of % Viability - Hybridoma Cell



### Achieve high cell growth and viability

In performance tests, the New Brunswick S41i CO<sub>2</sub> Incubator Shaker and two competitor models were used to grow hybridoma cells. Cells were passaged on days two and four. After six days, the New Brunswick S41i cell growth and viability compared favorably.



**Wolflabs**

# Wolf Laboratories Limited

[www.wolflabs.co.uk](http://www.wolflabs.co.uk)

Tel: 01759 301142

Fax: 01759 301143

[sales@wolflabs.co.uk](mailto:sales@wolflabs.co.uk)



**Use the above details to contact us if this literature doesn't answer all your questions.**

**Pricing on any accessories shown can be found by keying the part number into the search box on our website.**

The specifications listed in this brochure are subject to change by the manufacturer and therefore cannot be guaranteed to be correct. If there are aspects of the specification that must be guaranteed, please provide these to our sales team so that details can be confirmed.

