

Datasheet

Earmuff "Z2"

Protection against noise



Z2 **6220** **Hygiene kit** **6105**

CHARACTERISTICS

The Moldex Z2 is ideal to protect from intermittent noise – or for those who cannot achieve a safe and comfortable fit with earplugs.

All Moldex hearing products have been designed with the user in mind. High levels of comfort have been engineered into the products without compromising the optimal protection.



100% PVC-FREE

All Moldex products and packaging are completely free from PVC.

CERTIFICATION

The Moldex Z2 meets the requirements of EN 352 and is CE-marked in accordance with the requirements of European Directive 89/686/EEC.

The IFA in St. Augustin in Germany is the body responsible for type examination (Article 10).

The product is manufactured in an ISO 9001 certified plant.

ATTENUATION DATA

The Moldex Z2 passes the EN 352 minimum attenuation requirements set out in the table below. The A.P. V. values ($M_f S_f$) of the ear muff must exceed the data in the table.

Minimum attenuation requirement (dB)

Freq. (Hz)	63	125	250	500	1000	2000	4000	8000
A.P.V (dB)	-	5,0	8,0	10,0	12,0	12,0	12,0	12,0

Full attenuation data tables for the Moldex Z2:

Z2 – 6220: A – worn on head

A	Freq. (Hz)	125	250	500	1000	2000	4000	8000
	M_f (dB)	12,8	20,8	28,0	35,2	34,1	36,8	36,2
	s_f (dB)	3,7	3,0	2,9	4,2	4,2	3,2	7,1
	A.P.V (dB)	9,1	17,8	25,1	31,0	29,9	33,6	29,4
	Size: M/L	H = 31 dB M = 26 dB L = 17 dB SNR = 28 dB						

MATERIALS

Moldex earmuff and hygiene kit are made of the following materials:

Z2 (6220)

Cup: Polypropylene

Cup-foam: Polyurethane

Cushion: Polyurethane, TPE

Cushion foam: Polyurethane

Head band: Polyacetale

WEIGHT

Z2 (6220): 253 g

TESTING

The Z2 has been tested to EN 352 and fulfills all requirements of the relevant categories.

Ignitability

The earmuff will not ignite upon application of a heated rod, nor continue to glow after the removal of the heated rod.

Construction

All parts of the earmuff are designed and manufactured so that they are not liable to cause physical damage to the wearer when fitted and used according to the instructions.

INSTRUCTIONS FOR USE

- The earmuff must be used in accordance with the relevant national legislation, and fitted, adjusted and maintained according to the user instructions.
- Warning: Disregarding the user and fitting instructions for this product can affect the product efficiency in protecting against noise.
- Check the earmuff and cushions before use. Change them if they are damaged.
- Earmuffs, and in particular cushions, may deteriorate with use and should be examined at frequent intervals, for cracking and leakage for example.
- Products should be stored in a cool, non-contaminated and dry environment. They should not be exposed to direct sunlight or heat.
- The product may be adversely affected by direct contact with certain chemical substances (e.g. aromatic hydrocarbons).
- Earmuffs are reusable provided the hygiene of the product is maintained between uses. Clean with mild soap and water.
- We suggest replacing cushions and inserts from the hygiene kit every 6 months. This will ensure optimum levels of comfort and protection are maintained. The fitting of "hygiene covers" to the cushions may affect the acoustic performance of the earmuffs.

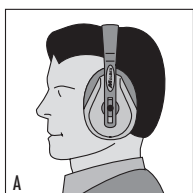
Datasheet

Earmuff "Z2"

Protection against noise

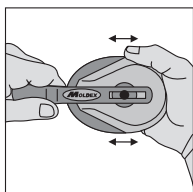


INSTRUCTIONS FOR FITTING: Z2 (6220)



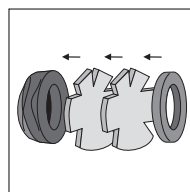
A. Z2 on head

When putting on the ear muff, the headband needs to be positioned in the middle of the head and the cushions need to cover the ears.

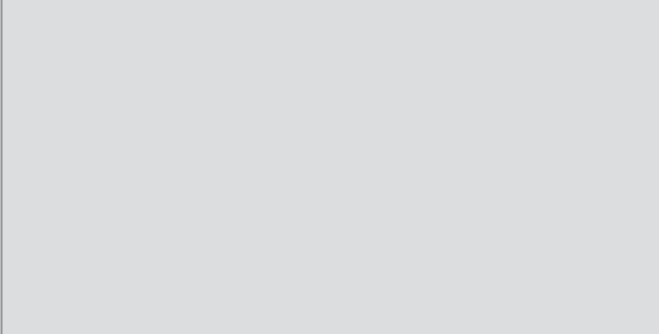


The position of the cup can be changed by moving the headband.

INSTRUCTIONS FOR FITTING HYGIENE KIT (6105)



The foam inserts and cushions are detachable and can be replaced by spare parts from the "hygiene kit" (product Number 6105).





Wolf Laboratories Limited

www.wolflabs.co.uk

Tel: 01759 301142

Fax: 01759 301143

sales@wolflabs.co.uk



Use the above details to contact us if this literature doesn't answer all your questions.

Pricing on any accessories shown can be found by keying the part number into the search box on our website.

The specifications listed in this brochure are subject to change by the manufacturer and therefore cannot be guaranteed to be correct. If there are aspects of the specification that must be guaranteed, please provide these to our sales team so that details can be confirmed.

