

Optica Microplate Photometer

8 channel ELISA photometer for 96 well microplates.

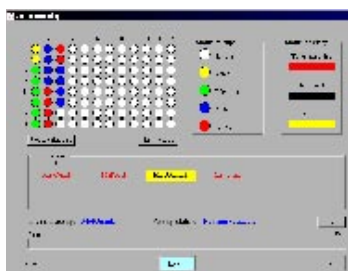
- Two optical filters built-in as standard
- Optional addition of two more filters
- Full on board controls or control via PC
- Accommodates all 96 well plate types
- 8 independent channels
- Quiet and reliable
- Minimal footprint
- CE Marked

The Optica Plate Reader can be operated using either the on board software via its membrane key panel or through a PC. Results can be printed utilising a dot-matrix printer connected directly to Optica's printer port or to any printer which is connected to the PC.

The Optica software lets you run up to 10 different assays per session with plates containing up to 12 standards and 12 controls. Assays can be configured and saved on the hard disc – ready for future use.

The software enables the processing of a qualitative – or a quantitative assay with qualitative interpretation which is visualised in a graph.

Individual data cards can be generated for each patient and all test results can be saved or printed out.



Optica software

Technical specification

Reading principle	8 independent channels mono or biochromatic reading
Light source	8 independent tungsten bulbs
Detectors	8 silicon photodiodes
Optical Filters	2 filters supplied as standard (450nm & 630nm) 2 additional filters upon request
Reading range	405nm to 700nm
Reading time	16 seconds – full plate monochromatic reading 32 seconds – full plate biochromatic reading
Accuracy	± 1% from 0.000 to 1.500OD ± 2% from 1.500 to 3.000OD
Result curves	Direct plotting point to point, linear regression and 4 parameters (log-logit)
Results calculation modes	OD, direct or calculated cut-off, single calibrator, programmable curves from 2 to 12 points
On-board display	2 X 20 character
Printer interface	Printer port for a dot-matrix printer
PC Interface	RS232 to PC running Windows 98/NT/2K/XP
Plate shaking	Timed linear shaking
Dimensions – main unit	200(w) X 577(d) X 240(h)mm
Weight complete system	8.2Kg
Power requirement	230/110V AC, 50-60Hz, 110W

Ordering information	Code no
Automatic microplate reader	8. 600



Optica



Wolflabs

Wolf Laboratories Limited

www.wolflabs.co.uk

Tel: 01759 301142

Fax:01759 301143

sales@wolflabs.co.uk



Use the above details to contact us if this literature doesn't answer all your questions.

Pricing on any accessories shown can be found by keying the part number into the search box on our website.

The specifications listed in this brochure are subject to change by the manufacturer and therefore cannot be guaranteed to be correct. If there are aspects of the specification that must be guaranteed, please provide these to our sales team so that details can be confirmed.

