

LMS Series 1A Cooled Incubators

Energy efficient
& ECO Friendly

The LMS Series '1A' Cooled Incubator is a reliable and accurate Temperature controlled cabinet (-10°C to +50°C) designed for optimum performance and reliability.

The design of the purpose built incubator facilitates the addition of optional extras to provide greater flexibility for individual use, making it suitable for a wide range of applications including:-

- The study of growth patterns of plants and insects
- B.O.D.Tests
- Seed germination & vernalisation
- Tissue culture
- Enzyme testing
- Serum studies
- Immunology
- Fruit fly culture
- Sample storage
- Product shelf life tests

Models

80 (76 litre) - benchtop or underbench
120 (120 litre) - freestanding
201 (201 litre) - freestanding
280 (272 litre) - freestanding

Construction

- Exterior - white stove enamelled mild steel
- Interior - white Pre-Coated Aluminium
- Insulation - foamed polyurethane for optimum results



Two Year Guarantee

Design

- Digital control with digital readout
- Fan assisted air circulation via premixing chamber
- Full P.I.D. heating control to ensure stable internal temperatures
- Pre-set 70°C safety cutout for total cabinet protection
- Electronics RF and TV suppressed
- Hermetically sealed refrigeration system
- Self-evaporating condensate drip-tray
- Doorlock
- White plastic coated wire shelves
- RS 232 interface

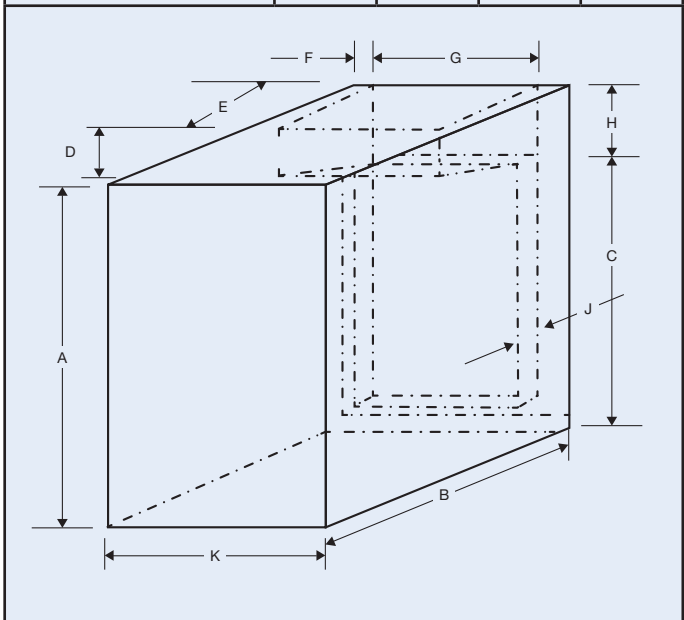
Operation

- Controls easy to read and simple to use
- Temperature range: -10°C to +50°C (excluding interior illumination) with average variation of +/- 0.5°C and fluctuation of 0.1°C with average workload
- Temperature set by direct reading digital controller

Optional Extras

- Automatic dual temperature control
- Interior fluorescent/u.v. lighting
- Inner clear perspex door
- Built in chart recorder
- Manual high/low temperature audible and visual alarm system with safety cut out
- Access porthole
- Special evaporator for corrosive conditions
- Internal socket outlet
- RS 485 interface
- Fully programmable controller
- Configuration software for Windows (for use with fully programmable controller)
- Pre-programming service, up to 5 different programs

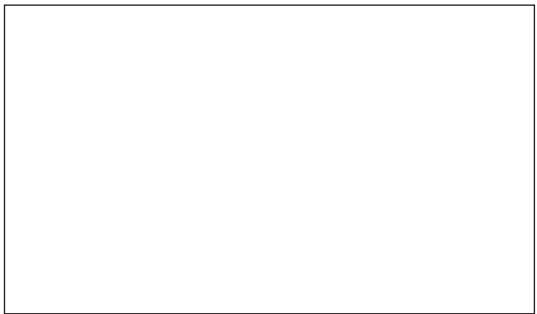
MODEL		80	120	201	280
EXTERNAL DIMENSIONS (MM)	HEIGHT	750	1070	1430	1750
	WIDTH	520	520	520	520
	DEPTH	580	580	580	580
CAPACITY (LITRES)		76	120	201	272
SHELF SIZE (MM)		420 X 430	420 X 430	420 X 430	420 X 430
NUMBER OF SHELVES		2	3	4	5
UNLADEN WEIGHT		40	55	65	75
INTERNAL DIMENSIONS (MM)	A	400	600	965	1285
	B	490	490	490	490
	C	275	475	785	1105
	D	125	125	150	150
	E	310	310	370	370
	F	10	10	30	30
	G	425	425	385	385
	H	125	125	180	180
	K	445	445	445	445
	J	40	40	40	40



LMS Limited reserves the right to amend the specifications of all models without prior notice in the light of changing user techniques.

The standard voltage is 240v 50Hz but other volts/cycles are available.

LMS





Wolf Laboratories Limited

www.wolflabs.co.uk

Tel: 01759 301142

Fax: 01759 301143

sales@wolflabs.co.uk



Use the above details to contact us if this literature doesn't answer all your questions.

Pricing on any accessories shown can be found by keying the part number into the search box on our website.

The specifications listed in this brochure are subject to change by the manufacturer and therefore cannot be guaranteed to be correct. If there are aspects of the specification that must be guaranteed, please provide these to our sales team so that details can be confirmed.

