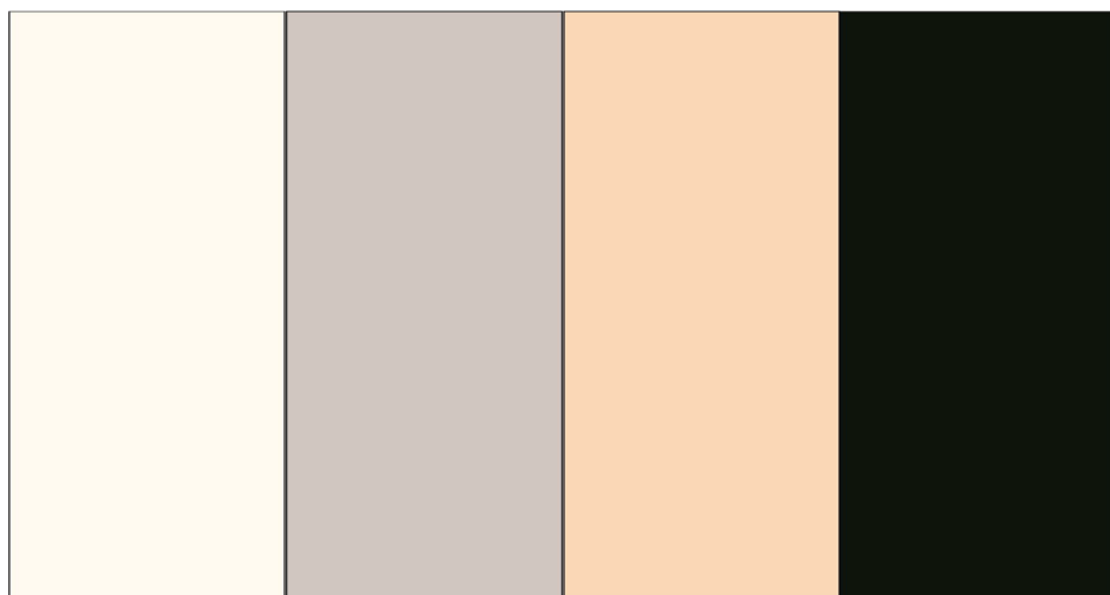


## **MATERIALS.**

Under bench storage units are manufactured from Kronospan Melamine Faced MDF (MF MDF). Tops, bottoms, ends & shelves are 18mm thick, backs are 8mm thick. Shelves are adjustable. All seen edges of the panels that make up the under bench storage units are covered with 1mm thick ABS lipping.

MF MDF is available ex stock in three standard colours:  
K101 White, U112 Grey and U515 Sand.

If plinths are required they are manufactured from Kronospan Moisture Resistant Melamine Faced MDF (MR MF MDF) colour U109 Black and come complete with adjustable feet for levelling.



**K101 White**

**U112 Grey**

**U515 Sand**

**U190 Black**

Alternative colours including Natural Wood grains are also available but are not always ex stock so check with the Project Office before making a firm commitment to the client.

Doors and drawer fronts etc are manufactured from 15mm thick Laminate Faced MDF (LF MDF), seen edges are lipped with 2mm thick ABS lipping which can be either a matching or contrasting colour.

High Pressure Laminate can be chosen from the Formica Fundamentals Range (see literature). Alternative manufacturer's laminates are available if the client for instance needs to match up to their existing furniture.

Check with the Project Office for more information/advice.

**ABS lipping is highly resistant to chemicals and solvents and is readily available in a wide range of sizes and colours. The lipping is bonded to the edges of the panels on our state of the art edgebanding machine using hot melt adhesive. The machine then goes on to trim and profile the edges of the lipping and finally cleans and buffs them to a polished finish.**

**ABS lipping is held on stock at the factory in a standard range of colours and client's specific colour requirements can usually be met.**



**Corner detail of door or drawer front.**



**A typical range of ABS lipping.**

**Worktops for standard laboratory use are manufactured from Trespa *Athlon* (see literature). The client can choose from the colour range shown as “Colours available from stock” in the literature but if for instance a small quantity of tables are required it may not be viable for the material to be procured. The material is sold in sheet sizes 3050 x 1530mm so it may not be possible to supply just one or two tops in any of the colours. For small quantities try to encourage the use of White or Grey as we normally have these in stock at the factory.**

**Trespa TopLab Plus (see literature) is a more specialised worktop material having a higher degree of resistance to acid and staining. It would be ideally suited for clean room conditions. Contact the Project Office for more information and guidance for this material.**

**Whilst Trespa *Athlon* is the most widely used material for laboratory worktops, alternative materials can be used for example Laminate Faced MDF, Stainless Steel, Epoxy Resin, Corian or Solid Hardwood.**

**Check with the Project Office if the client needs more information on alternative worktops.**

**Shelves for storage in the laboratory can be manufactured from the same material as the worktops but more economical material can be used as an alternative. Laminate Faced MDF or even Melamine Faced MDF would be adequate for shelves in most instances. However, some clients prefer to keep the material colour constant throughout the laboratory for aesthetic reasons.**

**Shelf support systems can be provided, for heavy duty use we would opt for a system known as Newtech Twinlock. The components are fabricated from the best quality heavy duty mild steel which ensures that it can be trusted to meet load bearing demands without failing or deforming. Wall uprights and shelf brackets are Epoxy Powder Coated White.**

**Check with the Project Office if the client needs more information on alternative shelving.**

## **Hardware.**



**Standard hinges are Hettich nickel plated clip on concealed hinges incorporating a self closing feature, 165 degree opening with three way adjustment.**

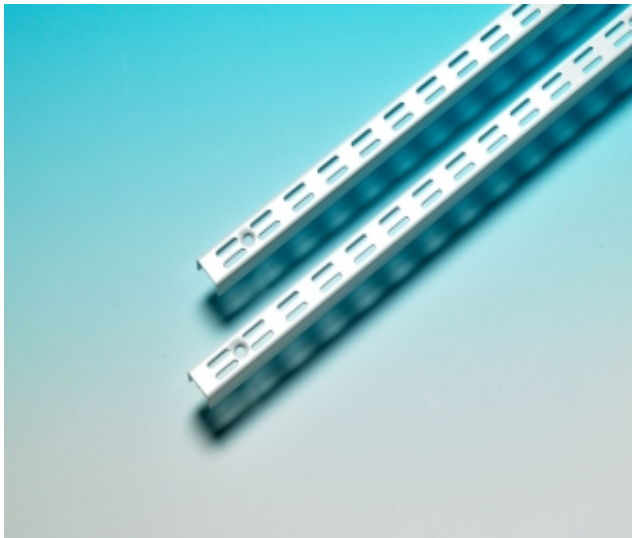


**Standard drawer boxes are Hettich Metabox system comprising of single wall steel drawer sides with roller runner extension and self closing feature with a load capacity of 25kg. Drawer profile heights can be chosen from 54, 86, 118 or 150mm and back to front depths of 350 to 600mm are available to suit differing carcass depths. Rails for hanging files can be incorporated if required.**

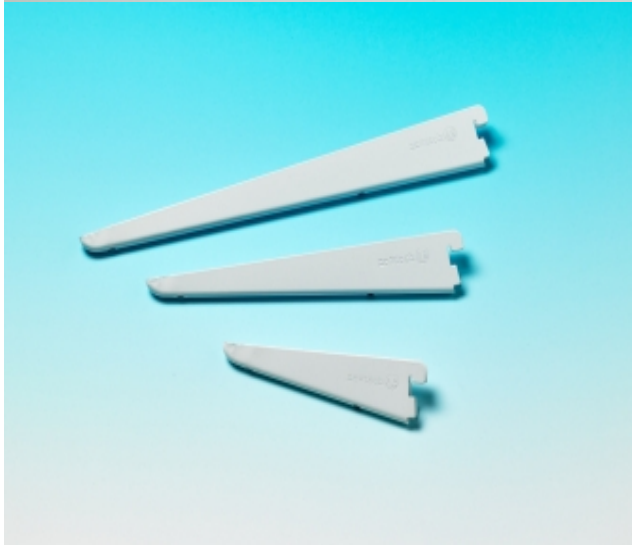


**Whilst standard handles are 100mm Stainless Steel "D" pulls, a variety of options can be offered. Hewi produce a range of solid nylon handles which are all available in a variety of colours. The range includes various sizes of "D" & "C" pull, circular and rectangular flush pulls. Other manufacturers offer handles in various materials & finishes such as satin anodised aluminium, polished chrome, brushed chrome & many more. Check with the Project Office for more information/advice.**

## **Newtech Twinlock**



**Twinslot uprights are available in seven lengths starting at 425mm & increasing to 2400mm.**



**Brackets for adjustable shelves are available in nine different widths starting at 120mm & increasing to 610mm.**

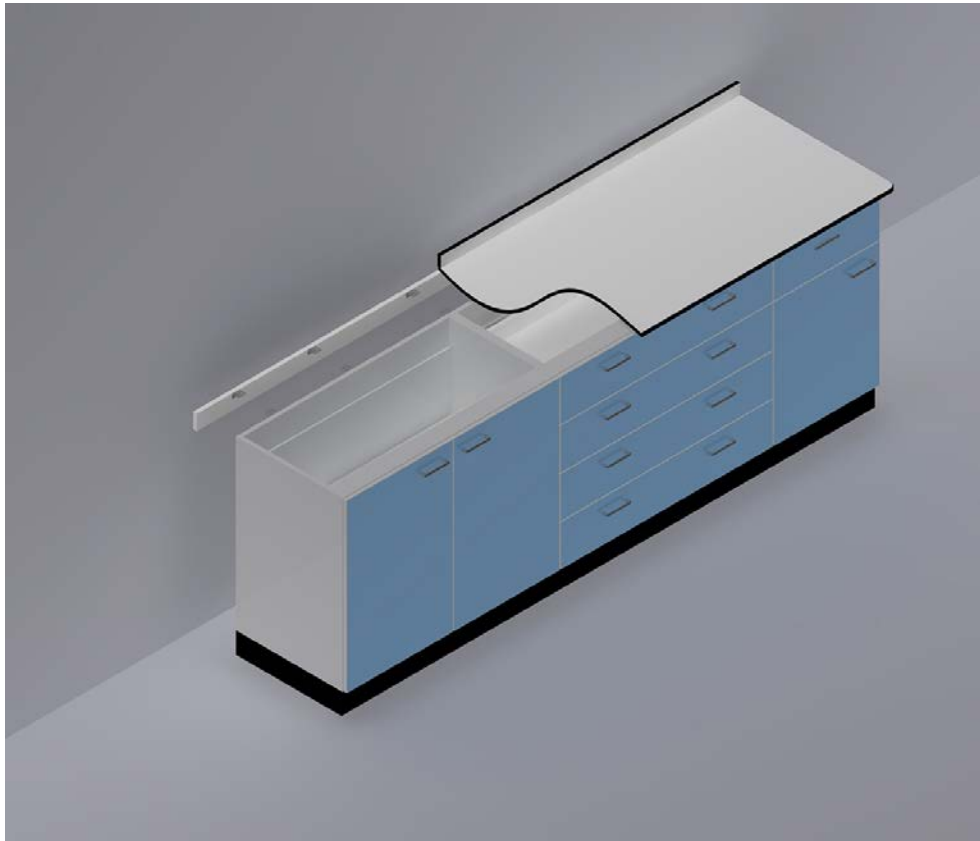


**Ancillary items such as heavy duty adjustable brackets, fixed brackets, book end brackets, retaining fittings etc are all available in the range.**

## **DIFFERENT STYLES OF STORAGE UNITS**

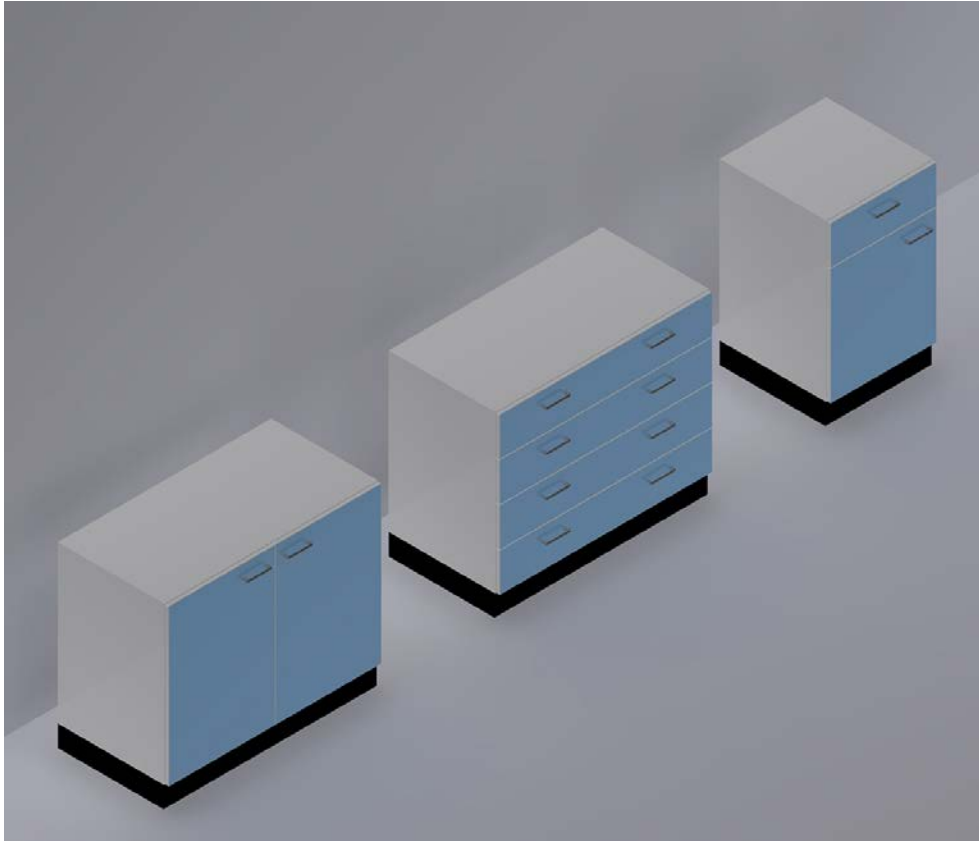
### **PEDESTAL.**

**The under bench unit(s) stands on a plinth in a fixed position and directly supports the worktop. It incorporates adjustable feet for levelling and a removable back to facilitate access to the service void. (See Gallery 01)**



### **FREE STANDING.**

The under bench unit(s) stands on a plinth in a space underneath the worktop but does not support the worktop. The worktop is supported on steel framing. The under bench unit(s) can be removed for access to the service void and can be positioned in any suitable space along the length of the bench to suit the requirements of the user. The plinth incorporates adjustable feet for levelling.



## **MOBILE.**

The under bench unit(s) has heavy duty swivel castors firmly fixed to the base, the front two castors incorporate a foot operated brake. All castors have 75mm diameter rubber tyres. The worktop is supported on steel framing. The under bench unit(s) can be easily removed for access to the service void and can be positioned in any suitable space along the length of the bench to suit the requirements of the user. (See Gallery 02 & 03)





## **SUSPENDED.**

The under bench unit(s) is suspended from the steel framing and is designed to meet the specific requirements of HTM 63 which is based on an original design by the Department of Health and is used primarily in the healthcare industry. The suspended style makes this system ideal for installations where a particularly rigid floor cleaning regime is required. (See Gallery04)



## **OTHER STORAGE OPTIONS.**

The under bench units drawn above in each style of benching indicate in the simplest terms a double cupboard, double 4 drawer & a single cupboard & drawer configuration. But in reality, any combination of doors & full or half width drawers can be manufactured.

Tall storage units are popular with some users as they give good storage with adjustable shelving.

Filing units are another option if write up areas are required.

Wall mounted storage units, open fronted, solid door or glass door formats are also an option for maximising potential storage areas.

Check with the Project Office for help and advice with any of the above.

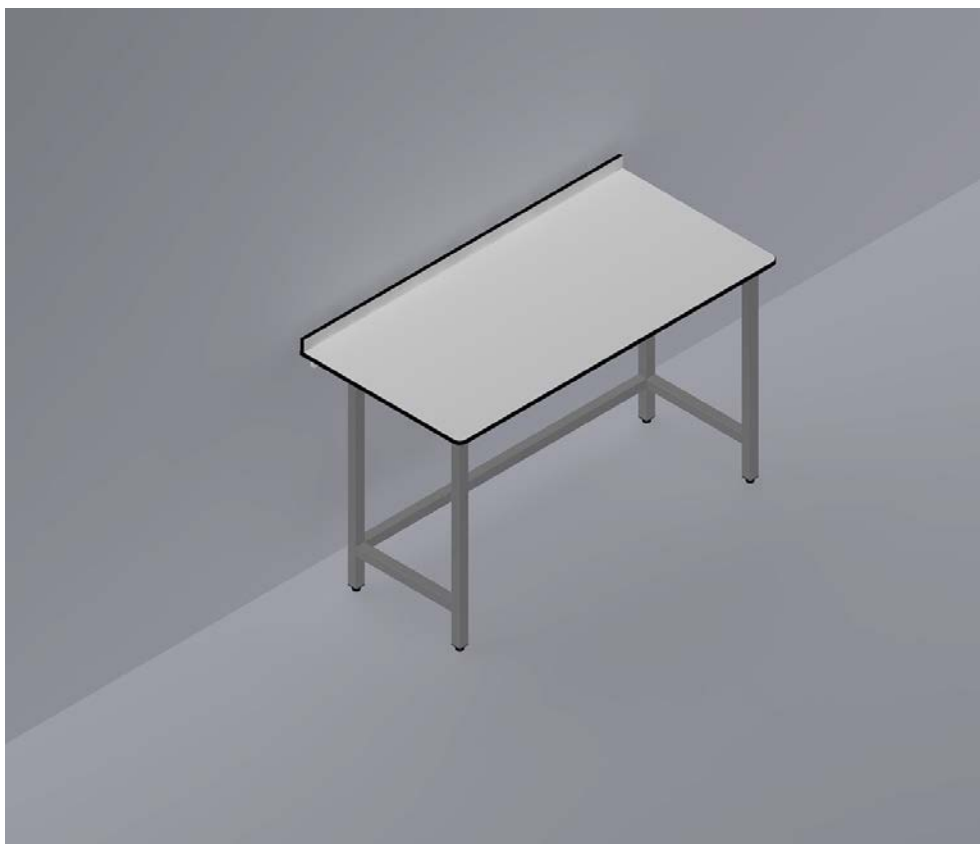
## **DIFFERENT STYLES OF STEEL SUPPORT FRAMING.**

### **General Note.**

**All steel framing is manufactured from 1.6mm thick ERW seamless tubular steel box sections (fabricated in accordance with production sketches) with all joints fully welded. Frames are then thoroughly degreased prior to Epoxy Powder Coating to chosen colour.**

### **FREE STANDING TABLE.**

**A fully welded table frame which comes complete with a Trespa Athlon top and incorporates adjustable feet. An additional low or mid level shelf is an option if required. Generally speaking a free standing table 1500 x 750 x 900mm high would take a load of 150kg.**



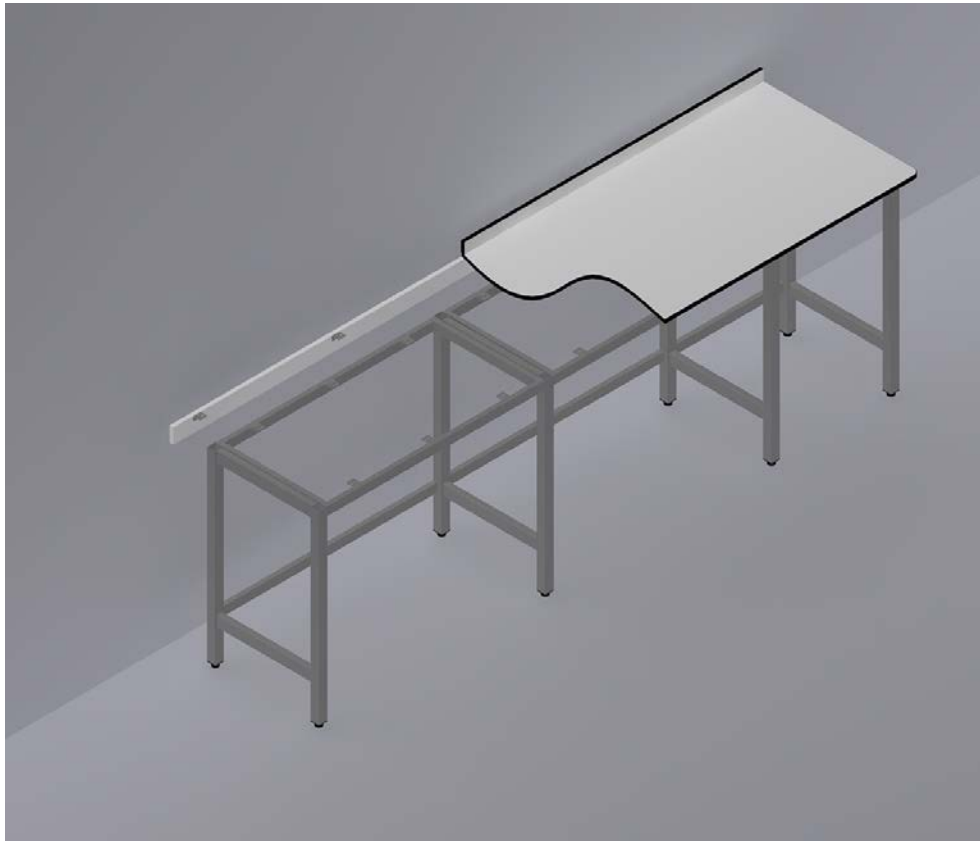
## **MOBILE TABLE.**

**A fully welded table frame which comes complete with a Trespa Athlon top and incorporates swivel castors to the two back legs and swivel lockable castors to the two front legs. Castors have 75mm diameter rubber tyres. An additional low or mid level shelf is an option if required. Generally speaking a mobile table 1500 x 750 x 900mm high would take a load of 150kg.**



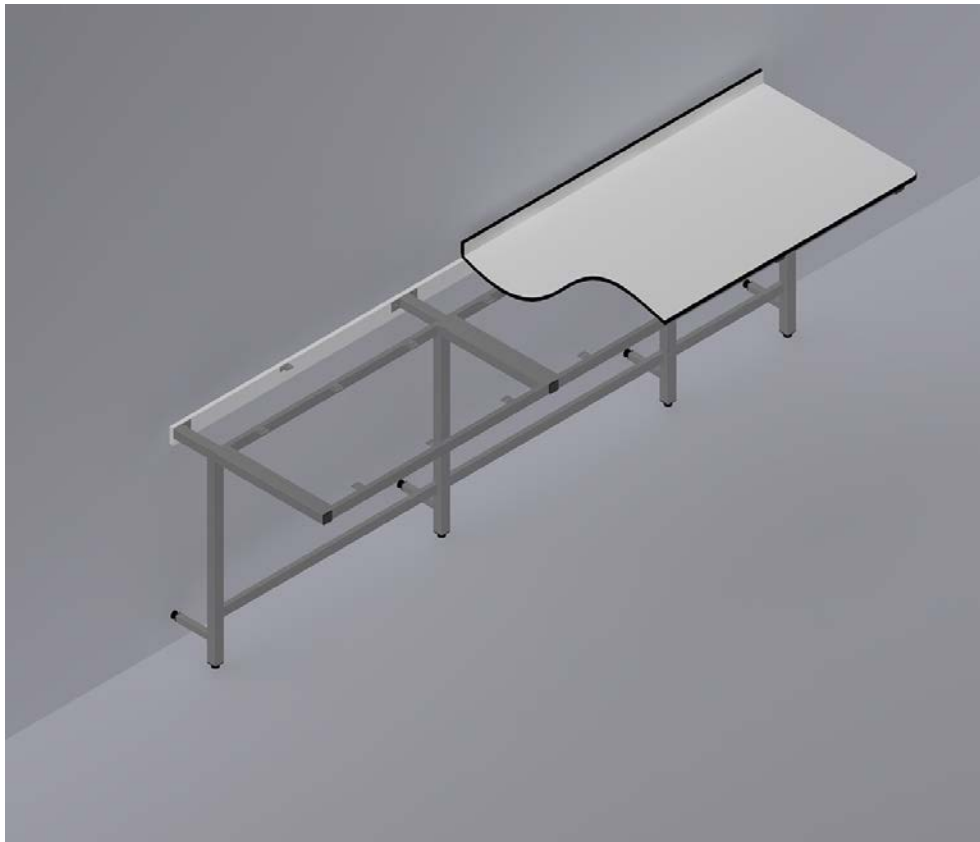
### **"A" FRAME SYSTEM.**

**A system of "A" frames, span frames and low level back rails that can be easily transported to site on pallets and quickly assembled. The span frames and low level back rails can vary in length to suit site sizes and will form a series of individual spaces along the length of the bench to take either free standing or mobile under bench units whilst leaving a full length service void to the rear. The storage spaces can be customised to take clients own equipment such as fridges, freezers etc or can be left open to provide knee spaces for write-up areas. (See Gallery 02)**



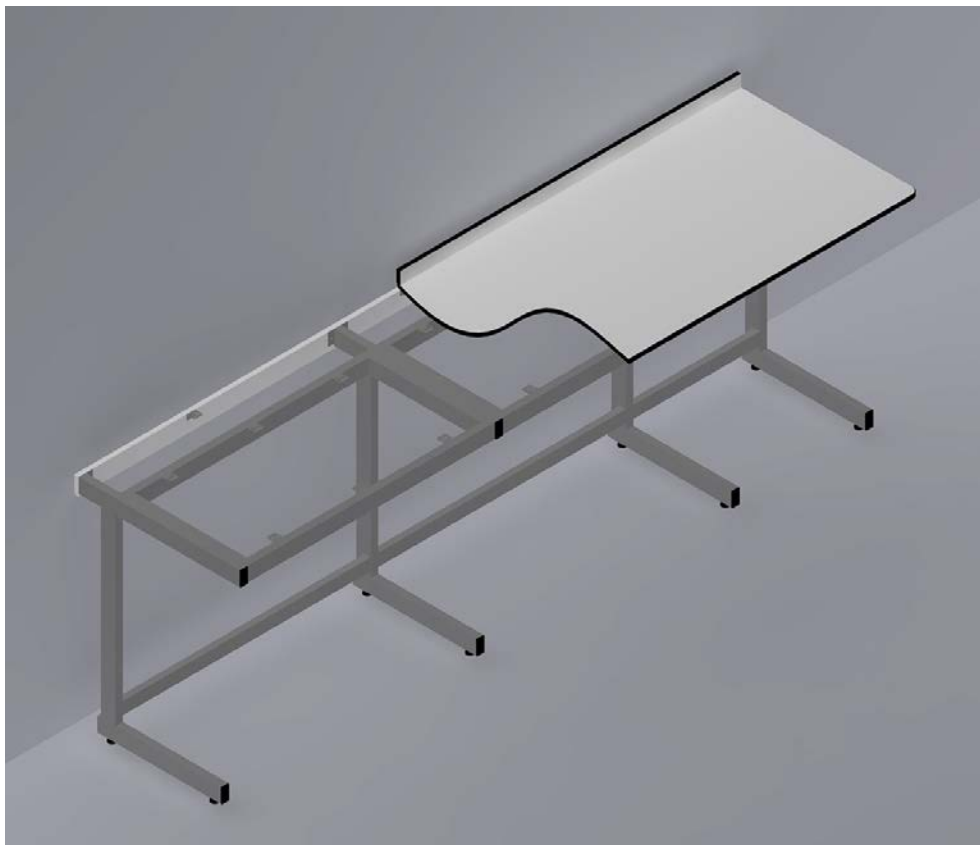
### **CANTILEVER "T" FRAMES.**

**A system of "T" frames, span frames and low level back rails that can be easily transported to site on pallets and quickly assembled. The span frames and low level back rails can vary in length to suit site sizes and will form a continuous space along the length of the bench to take either free standing or mobile under bench units whilst leaving a full length service void to the rear. The full length storage space can be utilised by the client in order to customise the bench to comply with the specific requirements of the user. The rear of the bench can be panelled to hide services etc from view if required. A full length fascia rail can be fitted as an option to the steel span frames. (See Gallery 03)**



## **CANTILEVER "C" FRAMES.**

**A system of "C" frames, span frames and low level back rails that can be easily transported to site on pallets and quickly assembled. The span frames and low level back rails can vary in length to suit site sizes and will form a series of individual spaces along the length of the bench to take suspended under bench units whilst leaving a full length service void to the rear. The storage spaces can be customised to take clients own equipment such as fridges, freezers etc or can be left open to provide knee spaces for write-up areas. The rear of the bench can be panelled to hide services etc from view if required. This system has been designed to meet the specific requirements of HTM 63 which is based on an original design by the Department of Health and is used primarily in the healthcare industry. The suspended style makes it ideal for installations where a particularly rigid floor cleaning regime is required. (See Gallery 04)**

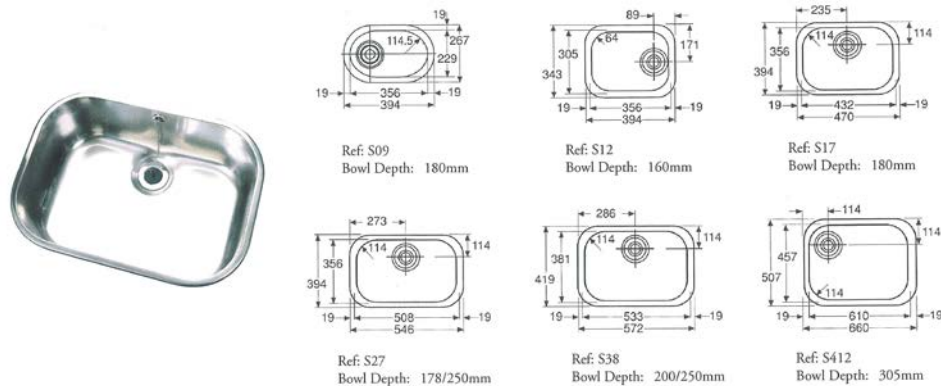


## SINKS & SERVICE OUTLETS.

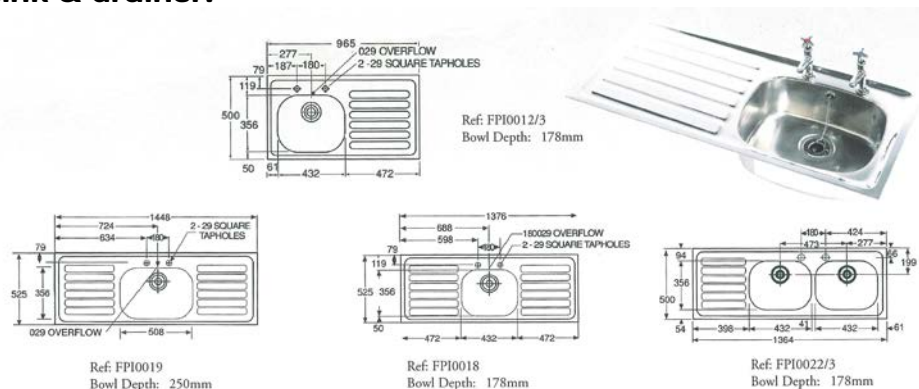
### STAINLESS STEEL SINKS.

If stainless sinks are required we would use the Pland Range which is manufactured using 316 quality Acid Resistant Stainless Steel. These are available in either self rimming or under slung versions of sink bowl, inset sink & drainer or sit on sink & drainer. All sinks will be supplied with the relevant waste overflow kit.

#### Sink Bowls.



#### Inset sink & drainer.



#### Sit on sink & drainer.



Specially fabricated stainless steel tops, sinks, bowls etc can be manufactured to suit any client's individual needs.

Contact the Project Office for more information.

## **CAST EPOXY RESIN.**

If cast epoxy resin sinks are required we would use the Simmons Range which is manufactured using Epoxy Resin which is extremely durable and is chemical and stain resistant. These are available in either under slung or drop-in versions of sink bowl, inset sink & drainer or sit on sink & drainer. All sinks will be supplied with the relevant waste overflow kit. Epoxy sinks are available in White, Grey or Ivory and in a variety of sizes.

### **Under slung & Self rimming Bowls.**



### **Inset sink & drainer.**



### **Sit on sink & drainer.**

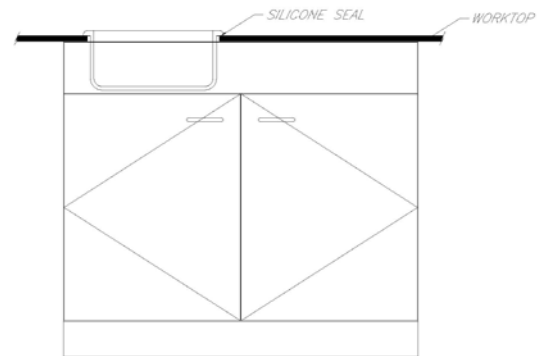




## SINK TYPES

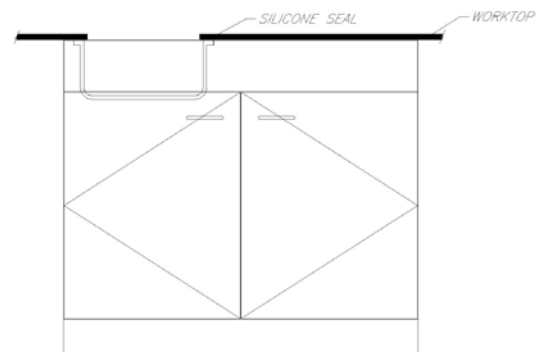
### Self-Rimming

The sink bowl sits on top of the worktop with a silicone sealant forming a waterproof barrier between the bowl lip and the face of the worktop



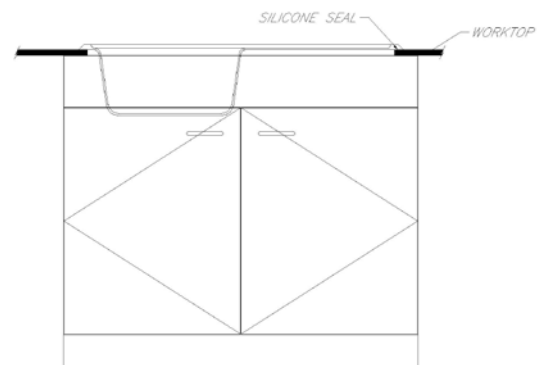
### Under slung or Flat Flange

The Sink bowl is fixed to the underside of the worktop with a silicone sealant forming a waterproof barrier between the bowl lip and the underside of the worktop. The cut-out formed through the worktop is cleaned up and finished to match the front edge of the worktop's



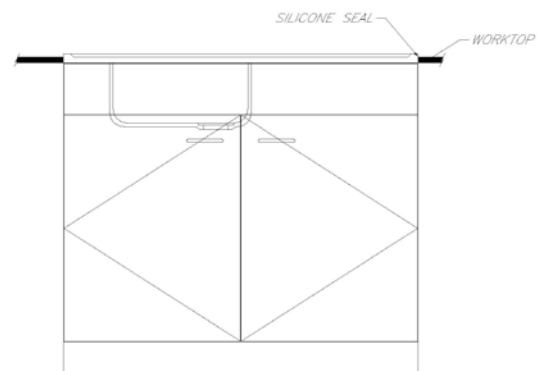
### Inset Sink and Drainer

The sink and Drainer sits on top of the worktop with a silicone sealant forming a waterproof barrier between the bowl lip and the face of the worktop



### Sit on Sink & Drainer

The Sink and drainer sit directly on the sink support unit or a compatible steel frame. The worktops can but up to either side of the sink with a silicone sealant forming a waterproof joint between the sink top and the worktop



Specially fabricated epoxy resin tops, sinks, bowls etc can be manufactured to suit any client's individual needs.

Other types of sinks can be utilised such as Corian, Fireclay, and Vitreous China etc to suit any client's individual needs.

Contact the Project Office for more information.

## **SERVICE OUTLETS.**

These can be supplied by various companies and are designed and manufactured with the particular requirements of the laboratory environment in mind.

Stringent safety and regulatory legislation also has to be adhered to by the manufacturer. The client may have a requirement for any new service outlets to be matched to existing and if this is the case we would need to know the manufacturer of the existing outlets.

Laboratory service outlets have colour coded handles and indices that comply with the international standard EN 13792 which is the norm for convenient indication of media.

Unless the requirements for service outlets are very basic i.e. a sink requiring a hand operated hot and cold water, it would be advisable to contact the Project Office for advice and information.



**Hand operated Hot & Cold water mixer**



**Lever (wrist) operated Hot & Cold water mixer**



**Hand operated Hot or Cold water Swan neck**



**Hand operated Hot or Cold water Bib tap**

## GALLERY



### Gallery O1

*A typical installation showing the PEDESTAL style of benching. Under bench storage units directly support the worktops. Storage shelving for reagents etc. above the benches incorporates electrical trunking & Trespa splash backs.*



### Gallery O2

*A typical installation showing the "A" frame & span style of support framing with MOBILE under bench storage units. The sink unit is a PEDESTAL type.*



### **Gallery O3**

**A typical installation showing the CANTILEVER "T" FRAME style of support framing with MOBILE under bench storage units. The end wall bench is open under for working areas and shows a selection of open, glass door & solid door wall storage units above.**



### **Gallery O4**

**A typical installation showing the CANTILEVER "C" FRAME style of support framing with SUSPENDED under bench storage units. This design meets with the requirements of HTM 63.**

## **GLOSSARY.**

<b>ABS</b>	<b>Acrylonitrile butadiene styrene. A synthetic polymer used for the manufacture of decorative lipping, it is highly resistant to impact, chemicals and solvents.</b>
<b>CORIAN</b>	<b>Corian is a non-porous, homogenous solid surfacing material composed of acrylic resins and is manufactured exclusively by DuPont.</b>
<b>EPOXY POWDER COATING</b>	<b>A free-flowing dry powder is applied electrostatically to the steel frame via a spray gun and is then cured under heat to allow it to flow and form a decorative finish.</b>
<b>EPOXY RESIN</b>	<b>A solid material that is durable, chemical and stain resistant which is mechanically strong and easily cleaned.</b>
<b>ERW</b>	<b>Electric Resistance Welding is a process of welding that produces a continuous, seamless weld at the faying surfaces of two similar metals without the need for an infill medium.</b>
<b>FIRECLAY</b>	<b>The clay body used in the manufacturing process used to produce Fireclay is extremely strong and has sufficient strength to retain its moulded shape during the firing process. It is a solid cast material.</b>
<b>HPL</b>	<b>High pressure laminate is manufactured by fusing multiple layers of resin impregnated paper together under heat &amp; high pressure, to create a material with a hard wearing &amp; durable decorative surface which can then be bonded to a core material.</b>
<b>MDF</b>	<b>Medium density fibreboard is a flat self supporting board having a core manufactured from wood fibres mixed with a thermosetting resin. The surface faces of the sheet are extremely flat and smooth. The wood fibre core can be modified by adding moisture resistant thermosetting resins which produces MR MDF (moisture resistant medium density fibreboard).</b>
<b>MF MDF</b>	<b>Melamine faced MDF is a flat self supporting board having a core manufactured from wood fibres mixed with a thermosetting resin and both faces covered with a 0.2mm thick Melamine decorative paper. The wood fibre core can be modified by adding moisture resistant thermosetting resins which produces MF MR MDF (moisture resistant melamine faced medium density fibreboard).</b>
<b>LF MDF</b>	<b>Laminate faced MDF is a decorative High Pressure Laminate bonded to a core material using a waterproof adhesive and suitable balancing laminate to the reverse.</b>
<b>TRESPA ATHLON</b>	<b>A flat self supporting board based on thermosetting resins, homogeneously reinforced with wood fibres and manufactured under high pressure and temperature with an integrated decorative surface which provides good resistance to acids etc. Owing to its flexural rigidity &amp; thickness Trespa Athlon does not require bonding to a core material thereby eliminating the possibility of any glue line failure.</b>

- TRESPA TOPLAB** A flat self supporting board based on thermosetting resins, homogeneously reinforced with wood fibres and manufactured under high pressure and temperature with an integrated decorative surface which provides greater resistance to acids etc than Trespa Athlon. Owing to its flexural rigidity & thickness Trespa TopLab does not require bonding to a core material thereby eliminating the possibility of any glue line failure.
- VITREOUS CHINA** The clay body used in the manufacturing process used to produce Vitreous China is a mixture of white burning clays & finely ground minerals. When glazed it is resistant to staining, burning, acids & alkalis. Due to its 99.5% vitreosity it cannot be contaminated by bacteria.



**Wolflabs**

# Wolf Laboratories Limited

[www.wolflabs.co.uk](http://www.wolflabs.co.uk)

Tel: 01759 301142

Fax: 01759 301143

[sales@wolflabs.co.uk](mailto:sales@wolflabs.co.uk)



**Use the above details to contact us if this literature doesn't answer all your questions.**

**Pricing on any accessories shown can be found by keying the part number into the search box on our website.**

The specifications listed in this brochure are subject to change by the manufacturer and therefore cannot be guaranteed to be correct. If there are aspects of the specification that must be guaranteed, please provide these to our sales team so that details can be confirmed.

