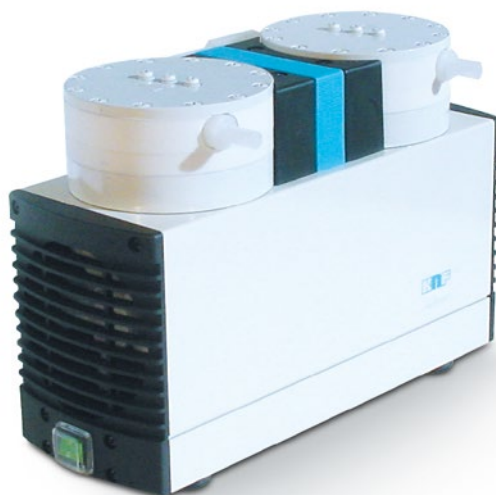


# DIAPHRAGM VACUUM PUMP LABOPORT® N 842.3 FT.18

DATA SHEET E 268



## Technical features

- 100 % oil-free transfer – thereby pure transferring, evacuation and compression of gases
- High level of vapor and condensate compatibility
- PTFE pump head combined with PTFE-coated diaphragm are ideal for extremely aggressive/ corrosive gases and vapors
- Maintenance-free
- Environmentally friendly
- Chemically-resistant
- Gastight, leakage rate approx.  $6 \times 10^{-3}$  mbar x l/s, not tested in serial production

## Technical data

Flow rate [m³/h] at atm. pressure	2.04
Flow rate [l/min] at atm. pressure	34
Ultimate vacuum [mbar abs.]	2
Operating pressure [bar g]	1
Voltage [V]	230
Frequencies [Hz]	50
Motor protection	IP 44
Power P <sub>1</sub> [W]	245
Operating current [A]	1.5
With thermal switch and power fuse	
Motors with other voltages and frequencies on request	

## MATERIALS

Pump head	PTFE
Diaphragm	PTFE-coated
Valves	FFPM

## OTHER DATA

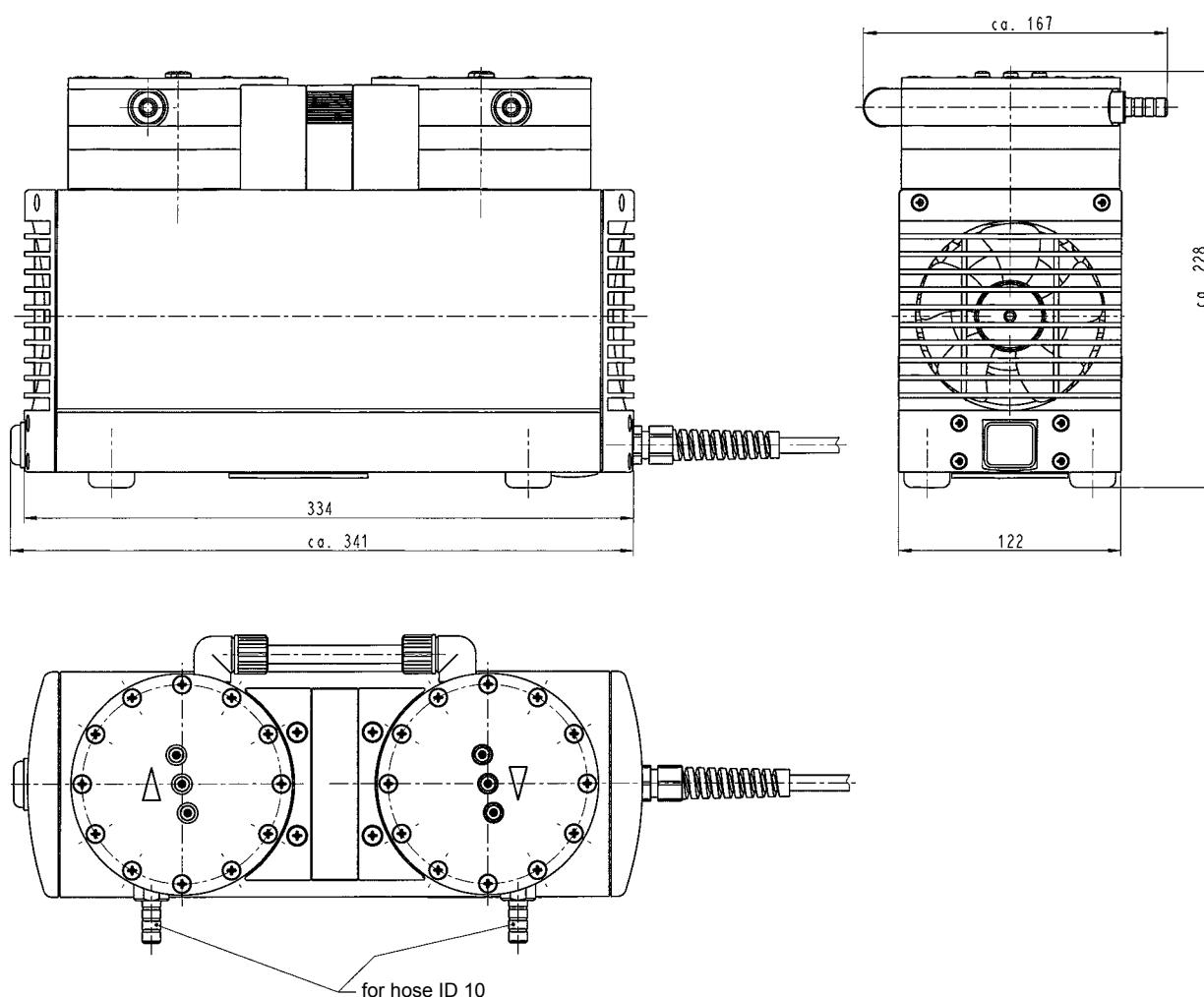
Weight [kg]	13.4
Hose connections	ID 10
Dimensions W x H x D [mm]	167 x 228 x 341
Permissible media and ambient temperature [°C]	+5 ... +40

## ACCESSORIES

	ID
Spares kit	057359

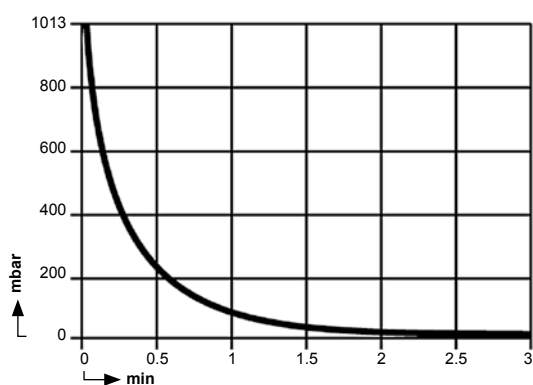
## Dimensions

N 842.3 FT.18

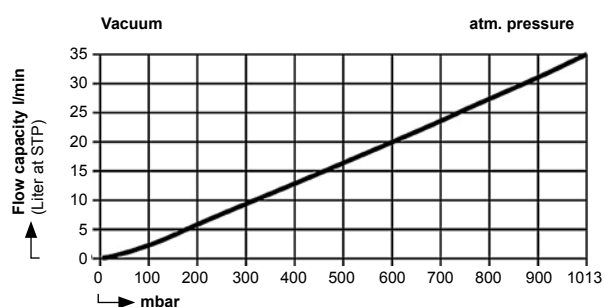


## Performance characteristics

### PUMP DOWN TIME FOR 10 LITER VESSEL



### FLOW CAPACITY





# Wolf Laboratories Limited

[www.wolflabs.co.uk](http://www.wolflabs.co.uk)

Tel: 01759 301142

Fax: 01759 301143

[sales@wolflabs.co.uk](mailto:sales@wolflabs.co.uk)



**Use the above details to contact us if this literature doesn't answer all your questions.**

**Pricing on any accessories shown can be found by keying the part number into the search box on our website.**

The specifications listed in this brochure are subject to change by the manufacturer and therefore cannot be guaranteed to be correct. If there are aspects of the specification that must be guaranteed, please provide these to our sales team so that details can be confirmed.

