

BENCHTOP CENTRIFUGES

# — ROTOFIX 46 | 46 H

## ROBUST INDUSTRIAL UNIT

These are ideal centrifuges for research and industrial laboratories. They are robust and can withstand intensive usage, even in the field. Specialty buckets are able to hold ASTM pear-shaped and conical tubes for petroleum testing.

Heated option provides chamber temperature up to +90 °C (ROTOFIX 46 H).



## — HIGHLIGHTS

- max. RPM: 4,000 min<sup>-1</sup> | 2,000 min<sup>-1</sup>  
Adjustable in increments of 10
- max. RCF: 3,095 | 984
- max. capacity: 4 x 290 ml | 4 x 100 ml
- robust and versatile benchtop centrifuge
- choice of 4 rotors
- maximum noise level of ≤ 58 dB(A)
- impulse button for short centrifugation
- easy operation with keypad
- Model 46 H heatable from +10 to +90 °C

## — FEATURES


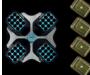
- metal housing and lid
- viewing port in the lid
- twist lock
- lid dropping protection
- emergency lid lock release
- stainless steel chamber
- automatic rotor recognition
- brushless drive
- error display
- imbalance switch-off
- control panel with actual values of all parameters
- auditory message after completion of the centrifugation run

## TECHNICAL DATA

	<b>ROTOFIX 46</b> non-refrigerated	<b>ROTOFIX 46 H</b> heated
voltage *)	200 – 240 V 1 ~	200 – 240 V 1 ~
frequency	50 – 60 Hz	50 – 60 Hz
consumption	460 VA	600 VA
emission, immunity	EN/IEC 61326-1, class B	EN/IEC 61326-1, class B
max. capacity	4 x 290 ml	4 x 100 ml
max. RPM	4,000 min <sup>-1</sup>	2,000 min <sup>-1</sup>
max. RCF	3,095	984
running time	1 – 99 min : 59 sec, ∞ continuous run, short cycle mode (impulse button)	1 – 99 min : 59 sec, ∞ continuous run, short cycle mode (impulse button)
dimensions (WxDxH)	538 x 647 x 345 mm	538 x 647 x 345 mm
weight	approx. 60 kg	approx. 60 kg
noise level	58 dB (A) with rotor 4474	58 dB (A) with rotor 4474
temperature setting, infinitely variable (dependent on the ambient temperature)	-	from +10 to +90 °C
<b>Cat. No.</b>	<b>4600</b>	<b>4600-50</b>
100 – 127 V 1 ~ / 50 – 60 Hz *)	4600-01	4600-51
consumption	500 VA	650 VA
emission, immunity	FCC class B	FCC class B

\*) Other voltages on request.

## AVAILABLE ROTORS

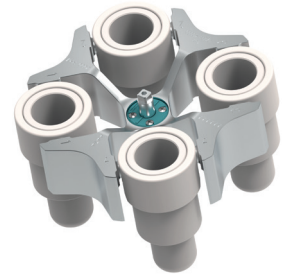
<b>SWING-OUT ROTORS</b>	angle	max. RPM	max. capacity	Cat. No.	page
 swing-out rotor, 4-place	90°	2,000 min <sup>-1</sup>	4x100 ml	<b>4474</b>	3
 swing-out rotor, 4-place	90°	4,000 min <sup>-1</sup>	4x290 ml	<b>5694</b>	3

## — SWING-OUT ROTOR, 4-PLACE | 4474



<b>Rotor</b>	
max. RPM   max. RCF	2,000 min <sup>-1</sup>   984
max. capacity	4 x 100 ml
run-up   run-down, braked in sec	16   40
angle   max. noise level	90°   58 dB (A)
<b>Cat. No.</b>	<b>4474</b>

<b>Bucket</b>	
<b>Cat. No.</b>	<b>4275</b>



<b>Tubes</b>	
capacity in ml	50    100    100    100    50
Ø x L in mm	45 x 130    58 x 161    44 x 168    37 x 200    36.5 x 185
max. RCF <sup>2.1)</sup>	984    984    961    961    912
radius in mm	220    220    215    215    204
<b>Cat. No.</b>	<b>ASTM<sup>2.1)</sup> 0528<sup>2.1)</sup> ASTM<sup>2.1)</sup> 0531<sup>2.1)</sup> Babcock</b>



<b>Adapter</b>	
boring Ø x L in mm	-    -    -    -    -
tubes per rotor	4    4    4    4    4
<b>Cat. No.</b>	<b>4278-A    0771    4277    4276-B    0703-A</b>

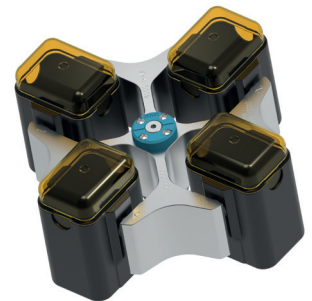
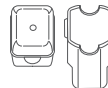


## — SWING-OUT ROTOR, 4-PLACE | 5694 (NOT FOR 46 H)

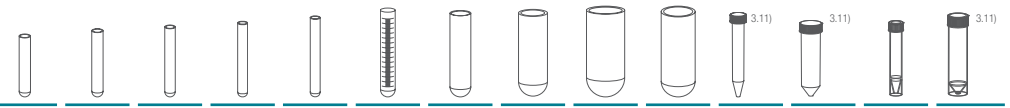


<b>Rotor</b>	
max. RPM   max. RCF	4,000 min <sup>-1</sup>   3,095
max. capacity	4 x 100 ml
run-up   run-down, braked in sec	40   45
angle   max. noise level	90°   58 dB (A)
<b>Cat. No.</b>	<b>5694</b>

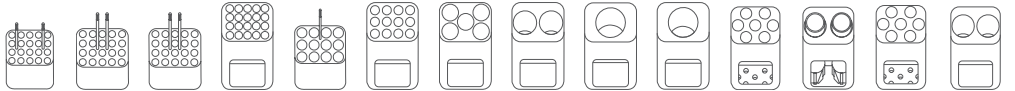
<b>Bucket</b>	
lid	5053
<b>Cat. No.</b>	<b>5051</b>



<b>Tubes</b>	
capacity in ml	3    5    6    7    9    15    25    50    100    100    15 <sup>3.11)</sup> 50 <sup>3.11)</sup> 12    50
Ø x L in mm	10 x 60    12 x 75    12 x 82    12 x 100    14 x 100    17 x 100    24 x 100    34 x 100    44 x 100    40 x 115    17 x 120    29 x 115    17 x 100    29 x 115
max. RCF <sup>2)</sup>	2,737    2,773    2,773    2,755    2,773    2,755    2,755    2,755    2,755    2,755    2,898    2,844    2,898    2,755
radius in mm	153    155    155    154    155    154    154    154    154    154    162    158    162    154
<b>Cat. No.</b>	<b>tubes<sup>2)</sup>    tubes with screw cap</b>



<b>Adapter</b>	
boring Ø x L in mm	11 x 44    12.5 x 39.5    12.5 x 39.5    12.5 x 82.5    16 x 50    17.5 x 82.5    26 x 82.5    36 x 82.5    45.5 x 82.5    42 x 82.5    17 x 90    30 x 82.5    17 x 90    36 x 82.5
tubes per rotor	80    80    80    80    48    48    20    8    4    4    28    8    28    8
<b>Cat. No.</b>	<b>5267    5227    5227    5247<sup>19)</sup>    5264    5248<sup>19)</sup>    5242    5243    5262    5249    6306    5259    6306    5243<sup>4)</sup></b>



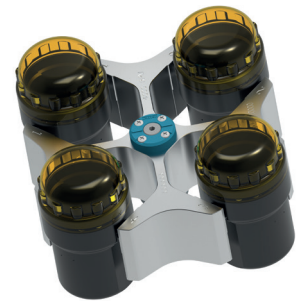
— SWING-OUT ROTOR, 4-PLACE | 5694 (NOT FOR 46 H)



<b>Rotor</b>	
max. RPM   max. RCF <sup>2)</sup>	4,000 min <sup>1)</sup>   3,095
max. capacity	4 x 290 ml
run-up   run-down, braked in sec	40   45
angle   max. noise level	90°   58 dB (A)
<b>Cat. No.</b>	<b>5694</b>



<b>Bucket</b>	
lid bioseal <sup>5)</sup>	5093
<b>Cat. No.</b>	<b>5092</b>



<b>Tubes</b>															
capacity in ml	5	7	15	25	50	100	100	250	15	50	12	25	30	25	250
Ø x L in mm	13 x 75	12 x 100	17 x 100	24 x 100	34 x 100	44 x 100	40 x 115	65 x 115	17 x 120	29 x 115	17 x 100	25 x 90	25 x 110	25 x 90	61 x 122
max. RCF <sup>2)</sup>	3,005	3,005	2,952	2,898	2,952	2,952	2,952	3,095	3,095	3,095	3,005	2,826	2,898	2,826	3,095
radius in mm	168	168	165	162	165	165	165	173	173	173	168	158	162	158	173
<b>Cat. No.</b>	<b>tubes<sup>3)</sup></b>											<b>tubes with screw cap</b>			<b>5127<sup>24)</sup></b>

<b>Adapter</b>															
boring Ø x L in mm	12.8 x 42	13.2 x 82	17.5 x 56.7	25.5 x 74	35.5 x 77.5	45.5 x 76.5	42 x 76.5	66 x 103	17 x 85	30 x 85	17.5 x 79.5	26 x 73	25.5 x 74	26 x 73	62 x 90
tubes per rotor	48	48	32	16	4	4	4	8	28	8	28	12	16	12	4
<b>Cat. No.</b>	<b>5128</b>	<b>5120</b>	<b>5136</b>	<b>5122</b>	<b>5124</b>	<b>5125</b>	<b>5126</b>	<b>1791</b>	<b>5129</b>	<b>5123</b>	<b>5121</b>	<b>5134</b>	<b>5122</b>	<b>5134</b>	<b>6319</b>

<b>Tubes</b>	
capacity in ml	290
Ø x L in mm	62 x 137
max. RCF <sup>2)</sup>	3,095
radius in mm	173
<b>Cat. No.</b>	<b>- 24)</b>

<b>Adapter</b>	
boring Ø x L in mm	62 x 90
tubes per rotor	4
<b>Cat. No.</b>	<b>6319</b>

2) Please note that the RCF values indicated refer only to rotor performance. The max. permissible RCF of tubes used should be verified with the individual manufacturers. The max. RCF for glass tubes annotated with footnote 2) is 4,000.  
 2.1) Please note that the RCF values indicated refer only to rotor performance. The max. permissible RCF of vessels used should be verified with the individual manufacturers. The max. RCF for ASTM Tubes annotated with footnote 2) is 700.  
 3.11) When using these tubes, bucket 5051 cannot be closed with lid 5053.  
 4) Please remove the spacer.  
 5) Tested by the TÜV in conformity with DIN EN 61010, section 2-020.  
 6) A rubber stopper for closing the tube for agitating or mixing is available under Cat. No. 0535. The tube may not be centrifuged with the stopper.  
 15) Also available with decanting aid. (Cat. No. 5247-91 or 5248-91).  
 24) At temperatures of over +40 °C and / or when not filled to capacity, bottles may warp during centrifugation.  
 30) In the heatable models 5660-50, 5660-51, 5660-70, 5670-50 and 5675-50, rotor 4619 may only be used up to a maximum of +40 °C.

## CERTIFICATIONS / REGISTRATIONS

Product certification:



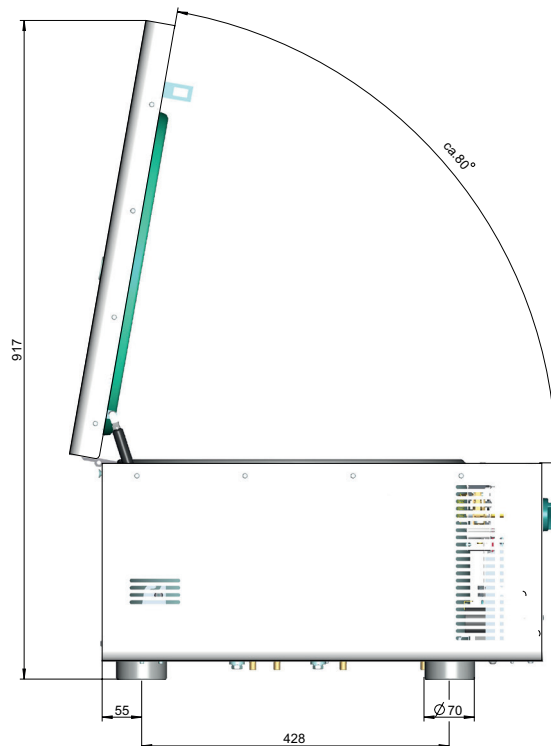
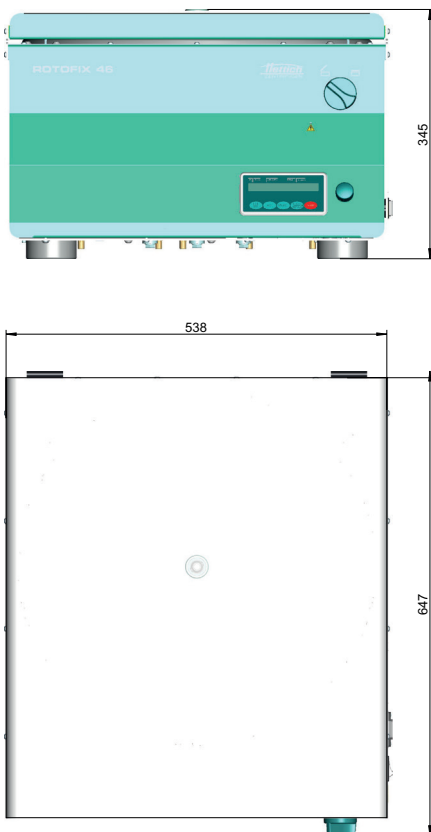
Product registration:



Company certifications:



## DIMENSIONS





**Use the above details to contact us if this literature doesn't answer all your questions.**

**Pricing on any accessories shown can be found by keying the part number into the search box on our website.**

**The specifications listed in this brochure are subject to change by the manufacturer and therefore cannot be guaranteed, please provide these to our sales team so that details can be confirmed.**

