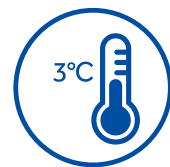


Typical Installation and Application

Suitable for sample storage within blood banks, hospitals, disease control centres, research institutes, electronic, chemical and other industries, cryopreservation of plasma, biologics and other products., also suitable for cold tests for components and materials.

Key Features**Energy saving with variable speed inverter technology**

Optimized refrigeration system with a high efficiency inverter compressor to reduce energy consumption.

**Excellent temperature uniformity in a large storage space**

Features built-in evaporator, large storage space and adjustable shelf, providing faster temperature pulldown and a better temperature uniformity of set point $\pm 3^{\circ}\text{C}$.

**Low noise**

Sound reduction design lowers the sound level to 37dB(A) at 220V/50Hz.

**Environment Friendly**

1)HC refrigeration system contains zero chlorine and fluorine, which is better for the environment.
2)Urethane foam insulation complies with European ROHS regulation.

**DW-30L818BP****Product Advantages**

Ergonomic Design: document holding compartment for storing size A4 paper and pens.

Microprocessor temperature control: LED displays cabinet temperature with 0.1°C resolution, ambient temperature, and input voltage.

Ergonomic handle design: easy access to storage space, built in lock and padlock features.

Casters and leveling legs for ease of maneuvering and positioning.



Power coating galvanized interior with large round corner design, corrosion resistance and easy to clean.

Optional USB port allows users to download temperature data saved up to 10 years for compliance and auditing purposes.



Double door seals for better insulation performance.



Pressure equalization port for easy door opening.



Inner door design reduces loss of cold air to improve energy efficiency and stable temperature.

Adjustable shelves made with stainless steel or coated steel.

Microprocessor Control System

- Microprocessor-based temperature control. Large LED displays cabinet temperature with 0.1 °C resolutions. The temperature range is -10 °C to -30 °C.
- Cabinet temperature, ambient temperature and voltage are shown on the panel.
- Alarm conditions include high and low temperature, sensor error, power failure, low battery, door ajar and high ambient.
- Alarm modes are audible and flashing lights. Remote alarm terminals are available.
- Battery supports display and alarm system for forty eight hours after power outage.
- Optional features are IoT module, USB port, temperature recorder and NFC swipe card functions.

Insulation

- 70 mm thick insulation.
- Inner doors for better thermal efficiency.

Porthole

- Two standard portholes allow ease of temperature testing.

Security Lock

- Lock is standard. Magnetic lock is optional for added protection and security

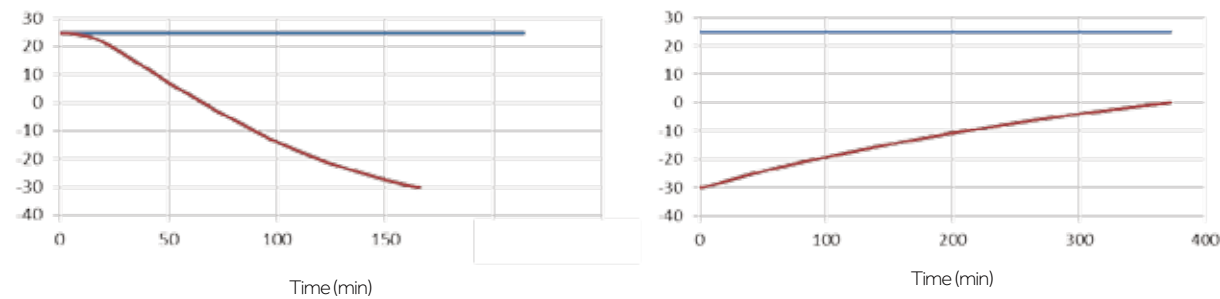
Temperature Recorder

- Optional temperature recorder for temperature recording and compliance.



Typical Performance Characteristics in 25°C ambient

— Ambient Temp.
— Center Temp.



-30°C Biomedical Freezer

Specifications

Model		DW-30L818BP	
Technical Data	Cabinet Type	Upright	
	Climate Class	4	
	Cooling Type	Direct Cooling	
	Defrost Mode	Manual	
	Refrigerant	HC	
	Sound Level(dB(A))	37(220V/50Hz)	
Performance	Cooling Performance(°C)	-30	
	Temp Range(°C)	-10~-30	
Control	Controller	Microprocessor	
	Display	LED	
Electrical Data	Power Supply(V/Hz)	100~230/50/60	
	Power(W)	470W(220V/50Hz)	
	Electrical Current(A)	2.5A(220V/50Hz)	
	Capacity(L/Cu.Ft)	818	
Dimensions	Net/Gross Weight(approx)	kg	210/240
		lbs	463/529.1
	Interior Dimension(W*D*H)	mm	750*755*1460
		in	29.5*29.7*57.5
	Exterior Dimension(W*D*H)	mm	988*950*1979
		in	38.9*37.4*77.9
Alarms	Remote Alarm	Y	
	High/Low Temp	Y	
	Hot Condenser	/	
	Power Failure	Y	
	High/Low Voltage	/	
	Sensor Error	Y	
	Low Battery	Y	
	High Ambient Temp	Y	
Accessories	Door Ajar	Y	
	Caster	Y	
	Foot	Y	
	Porthole	Y(2)	
	Shelves/ Inner Doors	5/3(Optional)	
	USB Interface	Optional	
	5V Power Supply Port	Optional	
	Temp Recorder	Optional	
	RS485 Port	Y	
	CO ₂ Backup System	/	
Other	LN ₂ Backup System	/	
	CE	CE	

Product appearance and specifications are subject to change without notice

-30°C Biomedical Freezer (Upright)

This freezer is designed for storage of critical and temperature sensitive biological samples, laboratory products and medical products in institutions such as blood banks, hospitals, and research laboratories.



Key Features

- Forced air and frost-free design: -30°C storage temperature with automatic defrost cycles guided by time and temperature, ensure maximum temperature stability and minimize energy use
- High-performance refrigeration system: achieves excellent temperature uniformity with intelligent operation control at -30°C
- Microprocessor control with digital display: 0.1°C control increments, adjustable range of -10°C to -30°C



Padlock



Backup battery protection



USB



Malfunction Alarms

DW-30L420F



Drawer(Optional)



Microprocessor control panel



Air distribution

-30°C Biomedical Freezer (Upright)

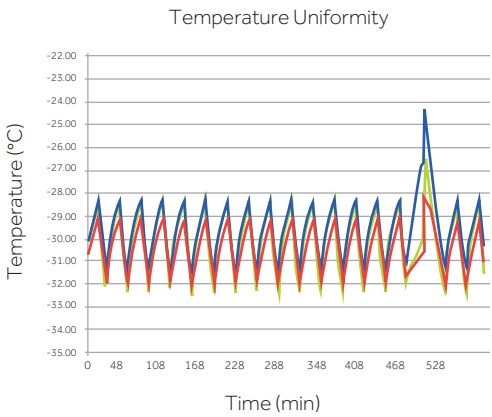
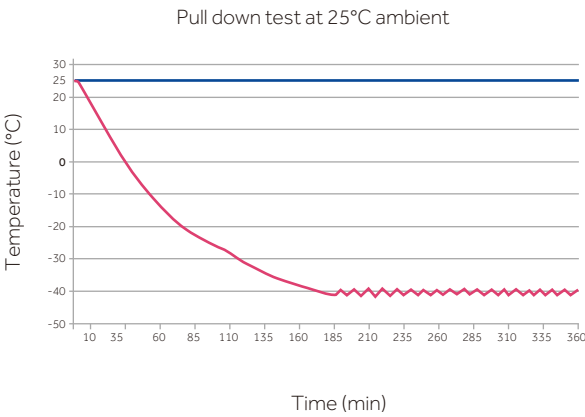


Safety

- Alarm system includes audible and visual alerts. Alarms include high and low temperature, sensor error, power failure, door ajar, low battery and high ambient temperature. Remote contacts are standard
- Backup battery provides continuous monitoring and displays the interior temperature for up to 48hs in the event of a mains power failure
- Standard USB port on DW-30L420F allows users to download temperature data
- Lockable door with padlock for added sample security

Ergonomic Design

- Self-closing door with 90°stay-open feature conserves energy and helps maintain temperature uniformity to protect your valuable samples
- Corrosion-free interior brushed stainless steel liner and exterior coated steel plate
- 5 adjustable stainless steel shelves and optional drawer
- Casters and levelling legs, easy to move and lock



*Freezer set-point -30 °C, ambient temperature 25 °C

-30°C Biomedical Freezer

Haier Biomedical -30 °C low temperature freezers: energy-saving Hydrocarbon refrigerants, safe and reliable with smart control.



DW-30L278



DW-30L508

Application

Biomedical and life science laboratories within blood banks, hospitals, disease control centres, research institutes as well as electronics and chemical industries. Used for cryopreservation of plasma, biologics and other products and cold tests for components and materials.

-30°C Biomedical Freezer

Advantages

- High-efficiency and energy-saving compressor and refrigeration system**
 Industrial grade energy-saving compressor and optimized cooling system reduces power consumption by more than 55% compared with older models.
- Superior temperature uniformity**
 Evaporator-shelf design speeds up the cooling process and provides a more uniform temperature distribution. The temperature uniformity at specific points throughout the unit is $\pm 4^{\circ}\text{C}$.
- Green and environmentally friendly**
 Hydrocarbon refrigerant compressor system and use of hydrocarbon refrigerants makes the refrigeration system completely green and environmental friendly; Built with isopentane foam polyurethane insulation, which complies with European RoHS Directive.
- Low Sound Level**
 Sound-reducing design with optimized system reduces the sound level, smoother operation eliminates high-pitched noise.

Key Features



Microprocessor control system:

- Microprocessor temperature controller, LCD temperature display, display accuracy at 0.1°C .
- Adjustable temperature setting from -10°C to -30°C
- Multiple alarm functions including high temperature alarm, low temperature alarm, sensor failure alarm and power failure alarm
- Sound and flash alarm
- Alarm lasts for more than 24 hours after power failure



Excellent temperature-retaining ability

High efficient insulation and double-sealing design improves temperature performance, energy efficiency, and system reliability



Lock

Lock latch and key lock double-lock design provides an extra level of security



Porthole

Porthole design is standard for test



Recorder

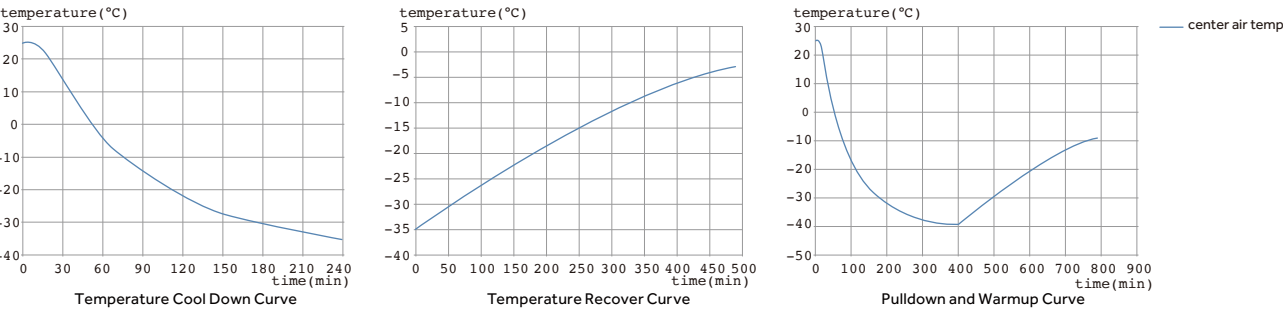
Optional chart temperature recorder available





DW-30L508

DW-30L508 | TYPICAL PERFORMANCE CHARACTERISTICS IN 25°C AMBIENT



Specifications

	Model	DW-30L420F	DW-30L278	DW-30L508	
Technical Data	Cabinet Type	Upright	Upright	Upright, Double Door	
	Climate Class	4	4	4	
	Cooling Type	Forced air Cooling	Direct Cooling	Direct Cooling	
	Defrost Mode	Automatic Defrost	Manual	Manual	
	Refrigerant	HC	HC	HC	
	Sound Level(dB(A))	46	40	41	43
Performance	Cooling Performance(°C)	-30	-30	-30	
	Temperature Range(°C)	-10~-30	-10~-30	-10~-30	
Control	Controller	Microprocessor	Microprocessor	Microprocessor	
	Display	LED	LCD	LCD	LED
Electrical Data	Power Supply(V/Hz)	220-240/50	208-230/60	220-240/50	115/60
	Power(W)	460/1000(Defrost)		330	530
	Electrical Current(A)	4.0/5.8(Defrost)		2	3
Dimensions	Capacity(L/Cu.Ft)	420/14.8		278/9.8	
	Net/Gross Weight (approx)	kg	195/225	115/135	164/200
		lbs	429.9/496.0	253.7/297.9	361.6/440.9
	Interior Dimension (W*D*H)	mm	685*610*1028	520*435*1230	685*610*1228
		in	27.0*24.0*40.5	20.5*17.1*48.4	27.0*24.0*48.3
	Exterior Dimension (W*D*H)	mm	950*890*1900	745*675*1810	915*810*1860
		in	37.4*74.4*74.8	29.3*26.6*71.3	36.0*31.9*73.2
	Packing Dimension (W*D*H)	mm	980*905*2040	805*725*1970	980*905*2040
		in	38.6*36.0*80.3	31.7*28.5*77.6	38.6*35.6*80.3
Alarms	Container Load(20'/40'/40'H)	12/24/24		14/28/28	
	High/Low Temperature	Y	Y	Y	Y
	Remote Alarm	Y	/	/	Y
	Power Failure	Y	Y	Y	/
	Sensor Error	Y	Y	Y	Y
	Low Battery	Y	/	/	/
	High Ambient Temperature	Y	/	/	/
	Door Ajar	Y	/	/	/
Accessories	Caster	Y	Y	Y	
	Foot	Y	Y	Y	
	Porthole	Y	Y	Y	
	Drawers/Inner Doors	-/3	6(Optional)/-	6/-	10/-
	Temperature Recorder	Optional		Optional	Optional
	USB Interface	Y	/	/	
	Certification	CE	CE	CE	UL

Product appearance and specifications are subject to change without notice



WolfLabs

Pricing on any accessories shown can be found by keying the part number into the search box on our website.

The specifications listed in this brochure are subject to change by the manufacturer and therefore cannot be guaranteed to be correct. If there are aspects of the specification that must be guaranteed, please provide these to our sales team so that details can be confirmed.

www.wolflabs.co.uk

Tel : 01759 301142

Fax : 01759 301143

sales@wolflabs.co.uk

Please contact us if this literature doesn't answer all your questions.