

pipetman®

M



**ELECTRONIC
PIPETTE**

Guaranteed
Performance
and Accuracy

- | Precise
- | Easy-to-use
- | Reliable





PIPETMAN® M Guarantees On-Target Performance

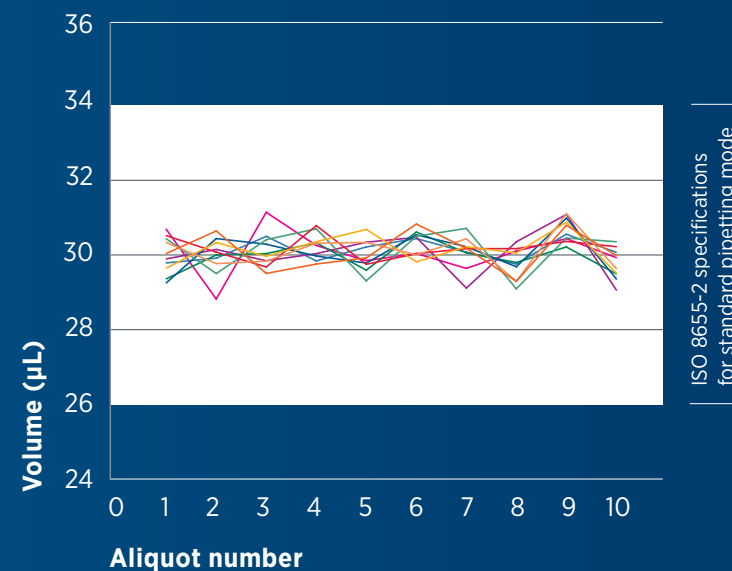
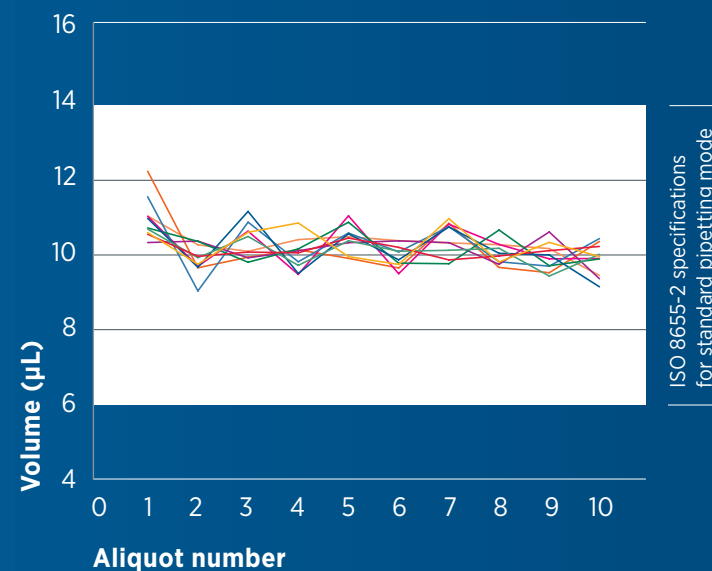
Did You Know?

The results speak for themselves.
We tested ten PIPETMAN® M pipettes in repetitive mode compared to the ISO 8655-2 specification for standard pipetting and every time it delivered a superior rate of precision inside the range.*

PIPETMAN® M MEETS ISO STANDARDS 8655-2 ON EVERY ALIQUOT

Systematic error of ten pipettes P300M
10 μ L aliquots

Systematic error of ten pipettes P300M
30 μ L aliquots



Systematic error of 10 PIPETMAN M 300 μ L pipettes in repetitive pipetting mode with PIPETMAN® DIAMOND Tips D300, applying the appropriate pipetting technique.

Gilson specifications apply only when using Gilson PIPETMAN® DIAMOND Tips.

Currently there are no ISO specifications for repetitive pipetting. In their absence, Gilson has gone the extra mile to test our instruments to meet the ISO 8655-2 specifications for standard pipetting and we guarantee outstanding results.

Learn more at:
www.gilson.com/guaranteedperformance

Pipette With Less Effort and More Comfort



A LARGE VOLUME RANGE

Eight single channels (from 0.5 μ L to 10 mL)
and twelve multichannels (from 0.5 μ L to 1200 μ L).



INTUITIVE INTERFACE

Easy-to-use pipette with five styles of pipetting
modes: pipet, repetitive, mix, reverse, and custom.



LIGHTWEIGHT AND COMFORTABLE

The ergonomic design combined with a short
pipetting stroke distance helps reduce repetitive
strain injury (RSI).



NO DOWNTIME

Use while charging without compromising
performance.



CREATE AND SAVE PROTOCOLS QUICKLY

Switch into custom mode to create a
new protocol. Save and transfer your
protocol securely into PIPETMAN[®]M
Software app for recall at a later date.



SIMPLIFY YOUR WORKFLOW

Make your routine easier when
performing qPCR, ELISA, NGS, cell
culture, and many other applications.



SECURE FIT DESIGN

Unique tip holder* allows for a
perfect fit and flawless performance.



*Gilson PIPETMAN[®] DIAMOND Tips are recommended for best tip fit.



Empower Your System with PIPETMAN® M Accessories

To support the work you do in the lab, we offer accessories that help facilitate your entire pipetting procedure – including making sure you are always ready with our charging adapter solutions.



PIPETMAN® M POWER CARROUSEL

Store and charge up to five PIPETMAN® M pipettes at one time with this convenient rotating stand, occupying minimal bench space.

Part number FB1001



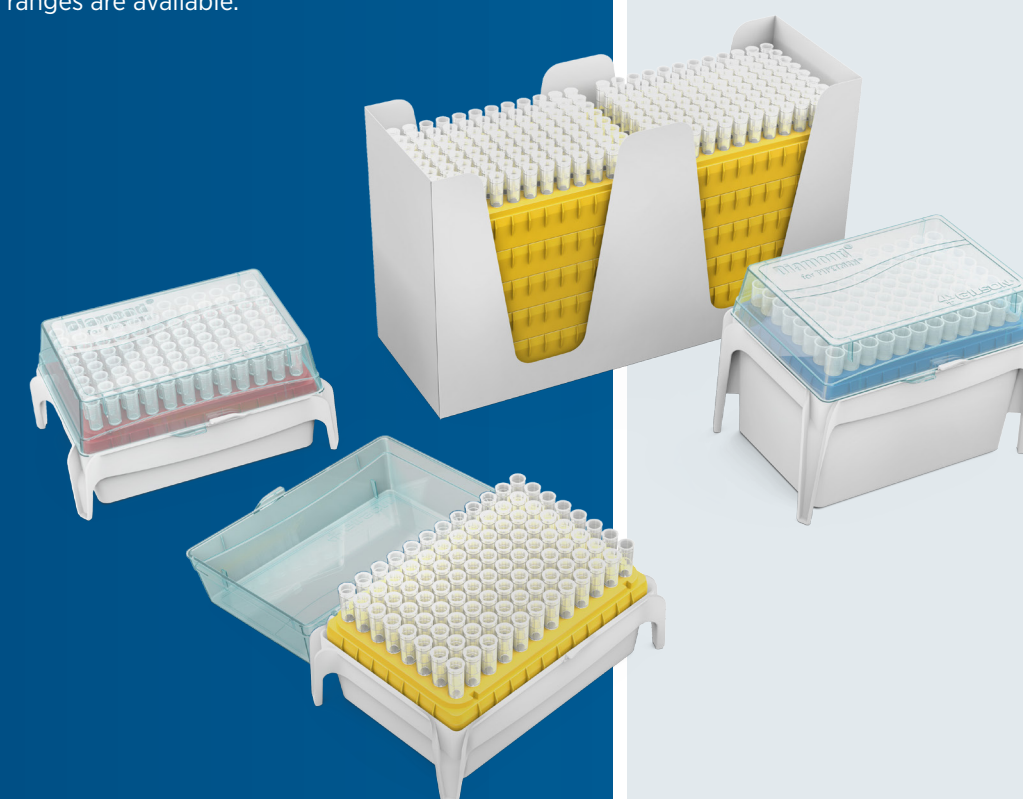
PIPETMAN® CARROUSEL STAND AND PIPETMAN® M STAND ADAPTER

Conveniently charge single and multichannel pipettes on our standard carousel stand with the charging stand adapter.

Part number F807023

RELY ON GILSON PIPETMAN® DIAMOND TIPS

Gilson PIPETMAN® DIAMOND Tips deliver the quality and reliability you need. A variety of packaging options, tip types, and volume ranges are available.



Your Gilson pipetting system				Volume range		Maximum Permissible Errors (standard pipetting mode)				
PIPETMAN® M model	Part number	PIPETMAN® DIAMOND Tips compatibility		PIPET Mode	REPETITIVE Mode	Gilson			ISO 8655-2	
						Volume	Systematic error (µL)	Random error (µL)	Systematic error (µL)	Random error (µL)
P10M	F81022	D10 DL10	DF10 DFL10	0.5-10 µL	0.5-10 µL	0.5	± 0.040	≤ 0.013	± 0.12	≤ 0.08
						1	± 0.025	≤ 0.012	± 0.12	≤ 0.08
						5	± 0.060	≤ 0.020	± 0.12	≤ 0.08
						10	± 0.080	≤ 0.025	± 0.12	≤ 0.08
P20M	F81023	D200 DF30		2-20 µL	2-20 µL	2	± 0.075	≤ 0.025	± 0.2	≤ 0.1
						10	± 0.100	≤ 0.035	± 0.2	≤ 0.1
						20	± 0.150	≤ 0.050	± 0.2	≤ 0.1
P100M	F81013	D200 DF100		5-100 µL	5-100 µL	5	± 0.35	≤ 0.10	± 0.8	≤ 0.3
						10	± 0.30	≤ 0.10	± 0.8	≤ 0.3
						50	± 0.38	≤ 0.12	± 0.8	≤ 0.3
						100	± 0.40	≤ 0.15	± 0.8	≤ 0.3
P200M	F81024	D200 D300	DF200 DF300	20-200 µL	5-200 µL	20	± 0.40	≤ 0.15	± 1.6	≤ 0.6
						100	± 0.80	≤ 0.22	± 1.6	≤ 0.6
						200	± 1.00	≤ 0.26	± 1.6	≤ 0.6
P300M	F81014	D200 D300	DF200 DF300	20-300 µL	10-300 µL	20	± 0.80	≤ 0.16	± 4.0	≤ 1.5
						30	± 0.70	≤ 0.20	± 4.0	≤ 1.5
						150	± 0.90	≤ 0.23	± 4.0	≤ 1.5
						300	± 1.05	≤ 0.30	± 4.0	≤ 1.5
P1200M	F81015	D1000 D1200	DF1000 DF1200	100-1200 µL	20-1200 µL	100	± 2.5	≤ 0.4	± 16	≤ 6.0
						120	± 2.4	≤ 0.4	± 16	≤ 6.0
						600	± 3.6	≤ 0.8	± 16	≤ 6.0
						1200	± 6.0	≤ 1.2	± 16	≤ 6.0
P5000M	F81016	D5000		500-5000 µL	100-5000 µL	500	± 10	≤ 2	± 40	≤ 15.0
						2500	± 15	≤ 4	± 40	≤ 15.0
						5000	± 25	≤ 7	± 40	≤ 15.0
P10 mL M	F81017	D10 mL		1-10 mL	200 µL-10 mL	1 mL	± 25	≤ 4	± 60	≤ 30.0
						5 mL	± 30	≤ 8	± 60	≤ 30.0
						10 mL	± 50	≤ 12	± 60	≤ 30.0
P8x10M	F81025	D10	DF10	0.5-10 µL	0.5-10 µL	0.5	± 0.05	≤ 0.02	± 0.24	≤ 0.16
P12x10M	F81026	DL10	DFL10			1	± 0.04	≤ 0.02	± 0.24	≤ 0.16
						5	± 0.08	≤ 0.04	± 0.24	≤ 0.16
						10	± 0.10	≤ 0.06	± 0.24	≤ 0.16
P8x20M	F81027	DL10	DFL10	1-20 µL	1-20 µL	1	± 0.08	≤ 0.05	± 0.4	≤ 0.2
P12x20M	F81028	D200	DF30			10	± 0.15	≤ 0.10	± 0.4	≤ 0.2
						20	± 0.25	≤ 0.12	± 0.4	≤ 0.2
P8x100M	F81018	D200		10-100 µL	5-100 µL	10	± 0.25	≤ 0.14	± 1.6	≤ 0.6
P12x100M	F81019	DF100				50	± 0.50	≤ 0.20	± 1.6	≤ 0.6
						100	± 0.80	≤ 0.25	± 1.6	≤ 0.6
P8x200M	F81029	D200	DF100	20-200 µL	5-200 µL	20	± 0.50	≤ 0.16	± 3.2	≤ 1.2
P12x200M	F81030	D300	DF200			100	± 1.00	≤ 0.30	± 3.2	≤ 1.2
			DF300			200	± 2.00	≤ 0.50	± 3.2	≤ 1.2
P8x300M	F81031	D200	DF200	10-300 µL	10-300 µL	10	± 1.00	≤ 0.18	± 8.0	≤ 3.0
P12x300M	F81032	D300	DF300			30	± 1.00	≤ 0.18	± 8.0	≤ 3.0
						150	± 1.50	≤ 0.375	± 8.0	≤ 3.0
						300	± 2.40	≤ 0.45	± 8.0	≤ 3.0
P8x1200M	F81020	D1200	DF1200	50-1200 µL	50-1200 µL	50	± 4.0	≤ 0.7	± 32	≤ 12
P12x1200M	F81021					120	± 4.0	≤ 0.7	± 32	≤ 12
						600	± 6.0	≤ 1.5	± 32	≤ 12
						1200	± 9.6	≤ 1.8	± 32	≤ 12

Gilson specifications set with Gilson PIPETMAN® DIAMOND Tips.

The maximum permissible errors always apply to the entire pipetting system that includes piston pipette and tip. When using pipette tips other than Gilson PIPETMAN® DIAMOND Tips with PIPETMAN® pipettes, Gilson specifications do not apply. Under these conditions:

- Gilson volumetric specifications in standard pipetting (PIPET mode) are guaranteed with a performance exceeding ISO 8655-2 recommendations for this mode.
- In the absence of ISO recommendations for repetitive pipetting mode for air-displacement pipettes, Gilson volumetric specifications for repetitive pipetting (REPETITIVE mode) are guaranteed within ISO 8655-2 recommendations for standard pipetting (Cf. ISO 8655-2 table 1).



Wolf Laboratories Limited

www.wolflabs.co.uk

Tel: 01759 301142

Fax: 01759 301143

sales@wolflabs.co.uk



Use the above details to contact us if this literature doesn't answer all your questions.

Pricing on any accessories shown can be found by keying the part number into the search box on our website.

The specifications listed in this brochure are subject to change by the manufacturer and therefore cannot be guaranteed to be correct. If there are aspects of the specification that must be guaranteed, please provide these to our sales team so that details can be confirmed.

