

# Frozen in Time Ltd

Manufacturers of Freeze Drying Machines and Vacuum Cold traps

## Operating Manual

## Lablyo Mini

### Main associated accessories:

Acrylic drying chamber	FIT/LYO/01/0
6 height shelf rack	FIT/LYO/03/0
6 heated shelf rack	FIT/LYO/19/0
4 shelf vial closing device	FIT/LYO/22/0
8 port flask manifold	FIT/LYO/13/0
48 port ampoule manifold	FIT/LYO/25/0
Spin Freezer	FIT/LYO/28/0
Vacuum pump	FIT/LYO/59/0

**Includes IQ/OQ Qualification**



**Operating Manual**

**Lablyo Mini**

Order Number:

Serial Number:

In case of enquiries please state the above

For service please contact:

**FROZEN IN TIME LTD**  
York Road Industrial Park, Sheriff Hutton  
York, YO60 6RZ, England  
[info@freezedriers.com](mailto:info@freezedriers.com)

**Telephone:** 01347 878158  
**International:** +44 1347 878158

# Contents

## 1. General Information

1.1. Introduction .....	5
1.2. Applications .....	5
1.3. Lablyo Mini technical data .....	6
1.4. Safety instructions .....	7
1.4.1. Disconnect the mains plug .....	7
1.4.2. Solvents .....	7
1.4.3. Cleaning and Maintenance .....	7
1.4.4. Freezing skin to cold surfaces .....	7
1.4.5. Transport instructions .....	7
1.5. The Lablyo Mini should not be used when .....	8

## 2. Information on Freeze Drying

2.1. General Information on Freeze Drying .....	9
2.2. Freezing .....	11
2.3. Primary drying .....	11
2.4. Secondary drying .....	14
2.5. End of Process .....	14
2.6. Defrosting .....	14

## 3. Description of the Freeze Drying Processes

3.1. Freezing the product .....	15
3.1.1. Freezing samples inside the ice condenser .....	15
3.1.2. Freezing in an external freezer .....	15
3.1.3. Freezing with a spin freezer .....	15
3.1.4. Flask freezing in a glycol freezer bath .....	15
3.2. Drying the product .....	16
3.2.1. Drying on plain shelves .....	16
3.2.2. Drying on heated shelves .....	16
3.2.3. Drying in a vial closing device .....	16
3.2.4. Drying in a vial closing device with heated shelves .....	16
3.2.5. Drying with a drum, column or lid manifold .....	17
3.2.6. Drying with a 48 port ampoule manifold .....	17
3.2.7. The Lablyo Mini as a standalone cold trap .....	17

## 4. Installation and Commissioning of the Unit

4.1. Site of installation .....	18
4.2. Mains power .....	18
4.3. Air Admittance .....	18
4.4. Condensate and defrosting water .....	18
4.5. Vacuum pump exhaust gases .....	18
4.6. Initial start-up .....	19
4.7. Installation of accessories .....	20
4.7.1. Vial closing device .....	20
4.7.2. 48 port ampoule manifold .....	21
4.7.3. Spin freeze .....	22
4.7.4. Heated shelves .....	23
4.7.5. 8 port column manifold .....	24
4.7.6. 8 port lid manifold .....	25
4.7.7. 6 shelf rack .....	26
4.7.8. The Lablyo Mini as a standalone cold trap .....	27

<b>5. Using the Lablyo Mini .....</b>	<b>28</b>
5.1. Switching the unit on .....	28
5.2. Starting the defrost .....	28
5.3. Temperature display .....	28
5.4. Drain valve .....	28
<b>6. Accessories and part numbers .....</b>	<b>29</b>
<b>7. Troubleshooting .....</b>	<b>31</b>
7.1. Power failure .....	31
7.2. Insufficient vacuum .....	31
7.3. Unit does not work .....	33
7.4. Insufficient ice condenser temperature .....	31
<b>8. Maintenance .....</b>	<b>32</b>
8.1. Ice condenser chamber .....	32
8.2. Heat exchanger .....	32
8.3. Rubber valves .....	32
8.4. Vacuum pump .....	32
8.5. Exhaust filter .....	32
8.6. Cleaning .....	33
8.6.1. Cleaning the freeze dryer .....	33
8.6.2. Cleaning the accessories .....	33
8.6.3. Maintenance of the drain valve .....	33
8.6.4. Disinfecting the drying chamber, the lid and the accessories .....	33
8.7. Checks by the operator .....	33
8.8. Layout and Dimensions	34
<b>9. IQ/OQ Qualification .....</b>	<b>35</b>
9.1. Installation Qualification .....	35
9.2. Operational Qualification .....	37
9.3 Summary .....	39

# 1. General Information

## 1.1. Introduction

### What is freeze drying (lyophilisation)?

**Freeze drying means:** Removal of water from frozen material. The drying process takes place by direct conversion from ice to vapour. This process is called sublimation. Sublimation happens under vacuum when the temperature in the product is less than -10°C.

**The aim of freeze drying** is to obtain a readily water-soluble product which has the same characteristics as the original product after the addition of water. As the drying process takes place in the frozen state at low temperatures it is possible to dry proteins which will not denature. Most of the other chemical compounds will also remain unchanged.

**Freeze drying** products, of biological origin such as tissues, tissue extracts, bacteria, vaccines and sera transforms them into a dry product. During this process enzymatic, bacterial and chemical changes are largely avoided. Freeze drying is the gentlest process for preserving the biological properties of sensitive tissue and tissue components. Freeze drying can also be used for dry some inorganic products.

## 1.2. Applications

The **Lablyo Mini** is a laboratory and pre-production machine for the freeze drying of products in ampoules, vials, glass flasks, bottles or dishes. The initial freezing of the products will require a spin freezer, flask freezing bath, laboratory freezer or in some cases the pre freezing of the products can be done in the **Lablyo Mini** chamber. The appropriate accessories are required for freeze drying can be made with the use of the.

## 1.3. Technical data of freeze dryer

### Lablyo Mini

<b>Performance data</b>	<b>-55°C</b>
Ice condenser capacity	3 kg max.
Ice condenser performance <sup>1)</sup> :	2 kg per 24 hour maximum
<b>Physical data</b>	
Dimensions of the unit:	width: 530 mm height: 410 mm depth: 590 mm
Weight:	approx. 45 kg
Noise emissions according to DIN 45635:	54 dB(A)
Chamber Dimensions	Ø200mm x 350mm
Electromagnetic compatibility according to EN 55011:	class B
Refrigerant:	R507 - 0.65KG
Voltage	240V 50Hz (220V 60Hz special order)
Main fuse rating:	13 Amp
Ambient temperature	5°C to 30°C
<b>Equipment connections:</b>	
Vacuum connection:	19mm nozzle
Drain valve	1/4 BSP ball valve
Electrical connection	IEC connection

## **1.4. Safety instructions**

### **1.4.1. Disconnect the mains plug before removing panels**

The mains plug must be disconnected before the panels are removed or any maintenance work is undertaken..

### **1.4.2. Solvents**

Acidic or high solvent concentration products should not be dried because of corrosion risk and damage to the vacuum pump.

### **1.4.3. Cleaning and Maintenance of the Unit**

For infectious, toxic, pathogenic and radioactive substances, the danger information of the associated safety regulations must be observed.

### **1.4.4. Freezing of skin to surfaces**

Make sure skin does not come into contact with freezing surfaces. Skin can only be detached from the surface by applying heat. Do not use liquid.

### **1.4.5. Transporting**

The **Lablyo Mini** should be carried by two people and care must be taken when placing the unit down on a surface not to trap fingers. .

## **1.5. The Lablyo Mini should not be used when:**

1. It is not properly installed.
2. The lid or accessories are not properly installed.
3. Panels are missing.
4. The operator is not authorized or trained
5. Highly corrosive or solvent substances are present.
6. The accessories are not designed to be used with the unit or show signs of damage.  
Glassware can be susceptible to implosion causing potential risk during freeze drying.
7. In hazardous or dangerous locations.
11. The products are explosive or highly flammable.
12. The products are Infectious, toxic, pathogenic or radioactive unless in suitable vessels and in accordance with the relevant safety data.



## 2. Information on Freeze Drying

### 2.1. General Information on Freeze Drying

Freeze drying is the gentlest process for drying products. It uses the process of sublimation, the direct conversion from solid to gaseous state. The frozen product is dried under vacuum without thawing. The condenser chamber works as a cryogenic pump as it takes large quantities of vapour and condenses it to ice. The vacuum pump is only intended to remove the air from the drying chamber but not the vapor. In order to start the sublimation process, energy must be supplied to the product.

When drying takes place in glass flasks on a manifold, the heat energy is taken from the warmer surrounding air.

When drying takes place on shelves in an acrylic chamber, the heat energy source is radiation from the environment and directly by from the shelves if they are heated.

Primary drying removes the most of the water from the product. Secondary drying removes the last traces of water means of deep vacuum..

The main components of a freeze dryer are:

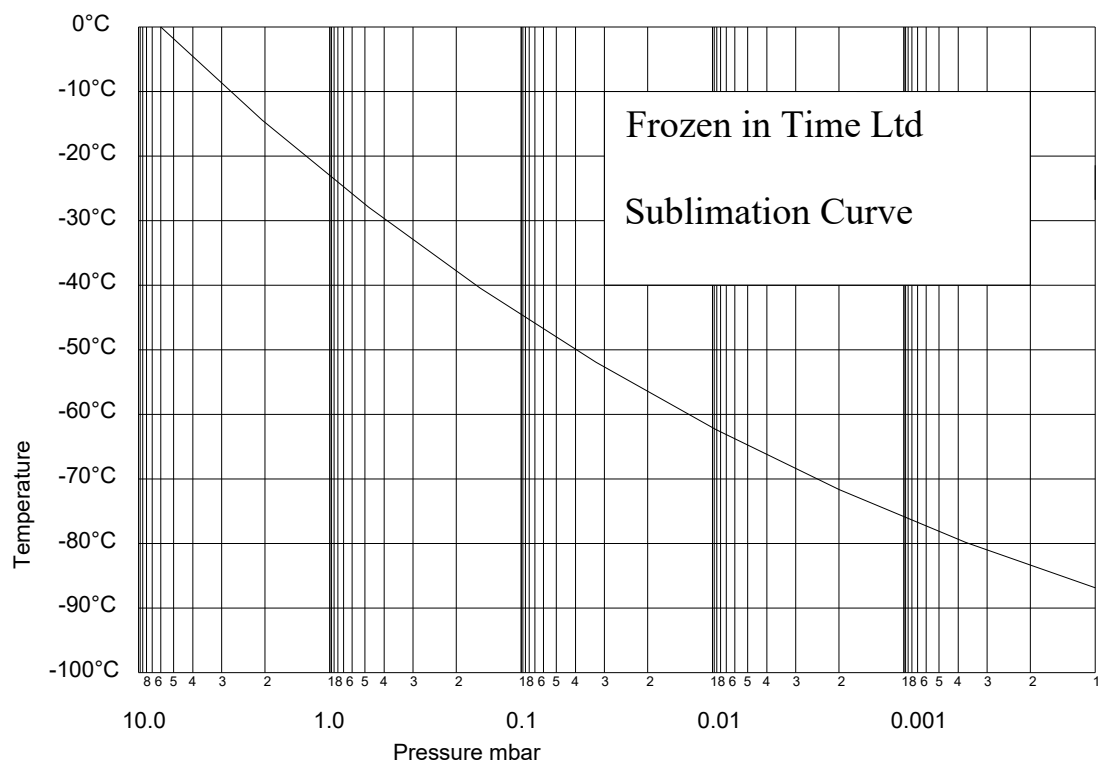
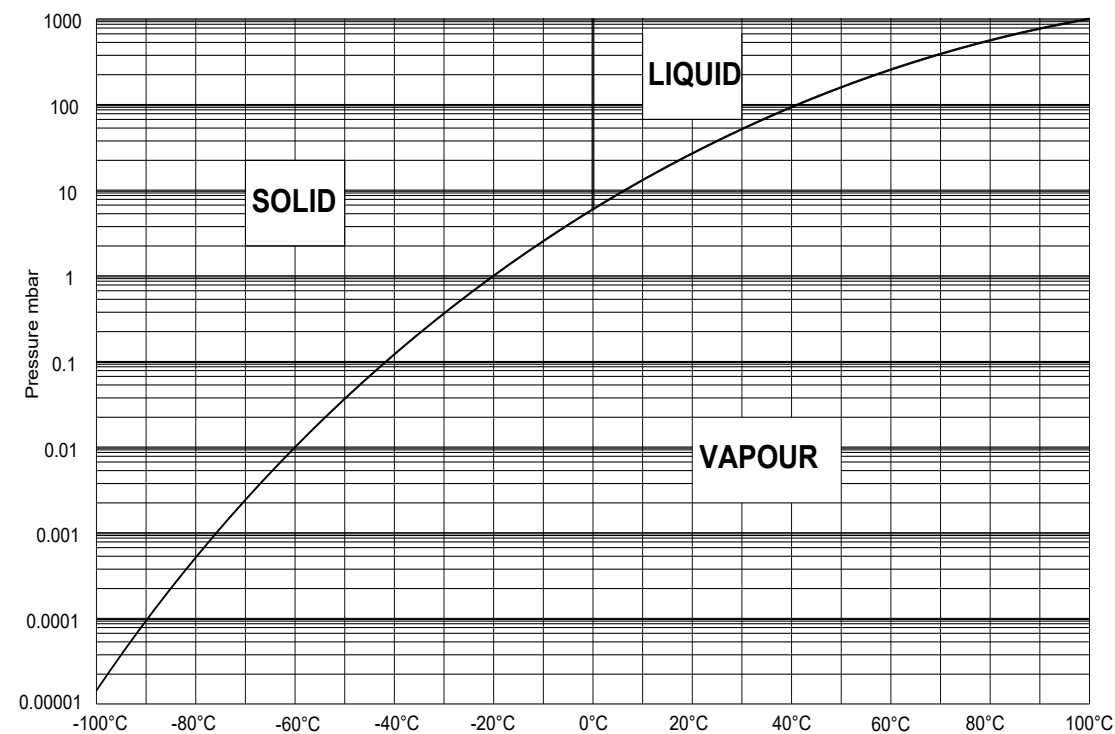
- Vacuum drying chamber or manifold
  - a) plain or heated shelves for drying in dishes
  - b) shelves with sealing device for drying in vials or small bottles
  - c) rubber valves for connecting round-bottom flasks, bottles, etc.
  - d) rubber nipples for connecting ampoules
- Vacuum pump to evacuate air.
- Ice condenser with a temperature of -55°C or -85°C to condense vapour.

#### Sublimation

The principle of sublimation is briefly explained using the phase diagram of solid liquid and vapour. If the pressure is higher than 6.1 mbar, water passes through all three phases (solid, liquid, vapour) when the temperature is lowered or raised. At 6.1 mbar and 0°C all three lines meet, this is called the triple point where all three phase can occur simultaneously. Below this point when the pressure is lower than 6.1 mbar, the ice is converted directly from a solid to a vapour on reaching the sublimation pressure curve.

The sublimation curve shows the vapour pressure of water as affected by temperature and pressure.

Phase diagram for solid, liquid and vapour



## 2.2. Freezing

Small product quantities can be frozen directly inside the ice condenser chamber of the **Lablyo Mini**. Larger quantities are pre-frozen in a deepfreeze. This the usual option for product to be freeze dried in trays or vials. Deep fill depths should be avoided by using wider containers filled to a shallower depth in order to maximize surface area. Liquids to be dried in narrow ampoules should be frozen in a spin freezer this causes the product to freeze in a thin section up the wall of the tube. Liquid to be dried in flasks should be rotated in a freezer bath. This causes the frozen material to form a thin layer, lining the flask. These procedures will help minimize the drying time.

It is advisable to pre-cool the shelves in order to avoid partial thawing during the evacuation.

Products containing solvent, high salt or sugar concentrations require freezing to lower temperatures.

## 2.3. Primary drying

The **Lablyo Mini** is taken to its operating temperature.

The vacuum pump is switched on.

**The duration of the main drying phase depends mainly on:**

- the layer thickness of the product,
- the solid content of the product,
- the heat supplied to the product during the drying process,
- the vacuum pressure inside the drying chamber during the drying process.

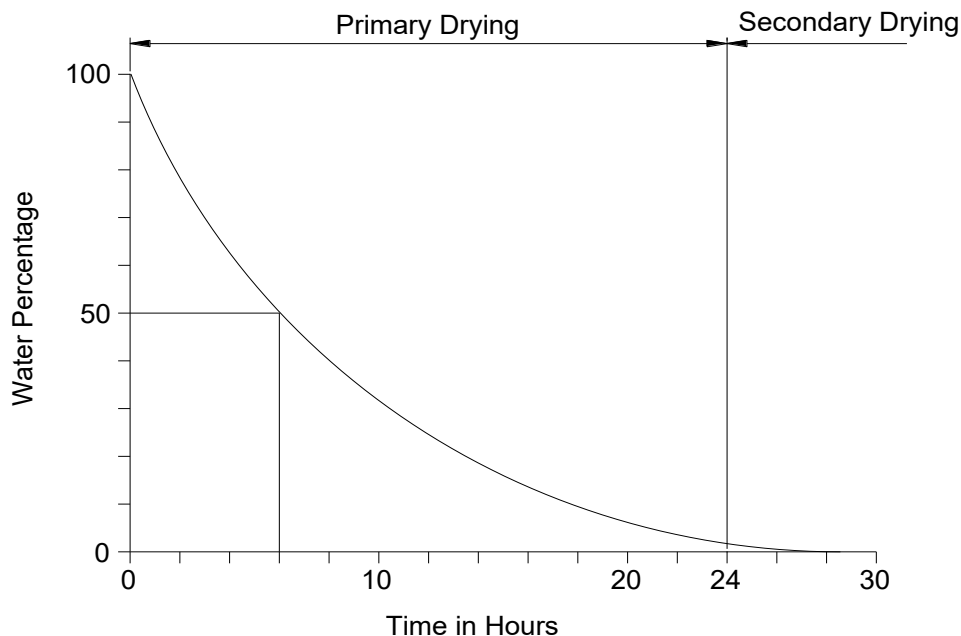
With increasing pressure the rate of sublimation rises as long as it stays below the vapour pressure of the product. This is because at higher pressures the heat energy reaches the sublimation front of the ice core sooner. Therefore the drying period is shortened. The water vapor generated during the main drying phase is not intended to be removed by the vacuum pump. It is to be collected by the ice condenser. The purpose of the vacuum pump is to lower the partial pressure of the non-condensable gases so that the water vapor can be transported from the product to the ice condenser. However, small quantities of water vapor will be removed by the vacuum pump. The vacuum pump is equipped with a gas ballast valve that when open, removes traces of condensable vapors from the pump. For this reason the gas ballast valve can be open during the main primary phase. The gas ballast valve is not required for secondary drying and closing it will help achieve a lower level of vacuum.

During primary drying the moisture is removed by sublimation and during final drying the bound moisture is removed by desorption. The recommended vacuum pump should reach with open gas ballast valve, a vacuum level lower than the relevant water vapour pressure.

**The residual moisture of the dried product depends mainly on:**

- The temperature of the dried product during the final drying process,
- The final vacuum reached during the final drying process.

The end of the primary drying phase is reached, when the product temperature is nearly the same as the shelf temperature (temperature difference between shelf and product approximately 3 to 5°C). Once the primary drying is completed the secondary drying will remove the bound water from the product. The following diagram shows the drying process for a product containing approximately 10 % solid matter. During the first quarter of the primary drying phase 50% of the water content is condensed. During the next quarter of the primary drying phase 50% of the remaining water content is condensed. This continues until the drying curve approaches the time axis asymptotically. This typical drying curve is due to the fact that the area of sublimation recedes into the product and the remaining water vapour must pass through the already dried layers. During the drying process the resistance increases. The drying curve is determined by the latent heat of sublimation and the amount of vapour transported. In order to increase the specific heat conduction properties of the product and to keep the water vapour volume as low as possible it is necessary that drying takes place as close as possible to the solidification point or eutectic point.



The drying time depends heavily on the vacuum level. The nearer the vacuum to the solidification point in accordance with the vapor pressure curve the shorter the drying time.

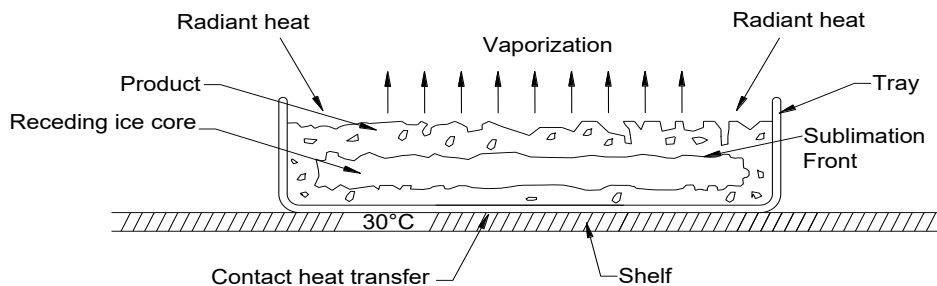
### Facts regarding ice in a vacuum:

- 1.0 gram of ice at;
- 1.0 mbar assumes a volume of 1 m<sup>3</sup> vapor
- 0.1 mbar assumes a volume of 10 m<sup>3</sup> vapor
- 0.01 mbar assumes a volume of 100 m<sup>3</sup> vapor

### Heat supply during drying

The required heat supply to the product to be dried takes place by;  
Conduction through contact in the drying chamber  
Mild conduction through low pressure vapour  
Radiant heat energy.

### Affects of freeze drying of a product in a dish



Heat transfer takes place via the heated shelves by direct contact with the bottom of the tray. At the beginning of sublimation the transfer of heat is very effective from the wall of the tray to the frozen product. However, soon an area develops which is ice-free, porous, dried and has an insulating effect between the wall of the tray and the product. This slows down the heat energy transfer available to the ice core. The porous dried layer enables the passage of vapour from the ice core. If it is restricted the temperature will increase and ice core will thaw rather than sublime. This applies especially to inhomogeneous products and to great layer thicknesses. During this drying phase it is important to regulate the heat supply and control temperature and pressure precisely.

## 2.4. Secondary drying

The final pressure in the drying chamber depends on the ice condenser temperature according to the vapor pressure curve above ice :

- e. g.    1.030 mbar correspond to -20°C  
          0.370 mbar correspond to -30°C  
          0.120 mbar correspond to -40°C  
          0.040 mbar correspond to -50°C  
          0.01 mbar correspond to -60°C

The unit is in operating condition if the temperature of the ice condenser is lower than -50°C and the pressure is lower than 0.12 mbar. The final pressure measured when there is no product in the unit and its corresponding ice temperature is determined by the warmest ice surface in the condenser chamber.

## 2.5. End of drying and air admittance

The product is dry when it is at or above ambient temperature while under the secondary drying vacuum level. The condenser temperature will also be lower than when under load.

The vacuum pump can be switched off and the condenser chamber drain valve can be opened as an air admittance valve. This valve can be used to purge the unit with nitrogen or another inert gas instead of using air. Then the unit is switched off and the product is removed.

## 2.6. Defrosting

Defrosting of the ice condenser is carried out by switching off the refrigeration and switching on the red defrost button. To let the water out, open the drain valve and allow to drain into an appropriate container. The defrost is self regulating and will not overheat.

## 3. Description of the Freeze Drying Processes

### 3.1. Freezing the product.

There are 4 ways to freeze the product when using the **Lablyo Mini**

1. The condenser chamber
2. A laboratory freezer preferably -40°C
3. The Spin freezer
4. Flask freezing in a glycol bath

#### 3.1.1. Freezing inside the ice condenser chamber.

Possible water residue is removed from the ice condenser chamber. To do this open the drain valve so that water residue can drain off. Then the ice condenser chamber should be wiped out if necessary. This



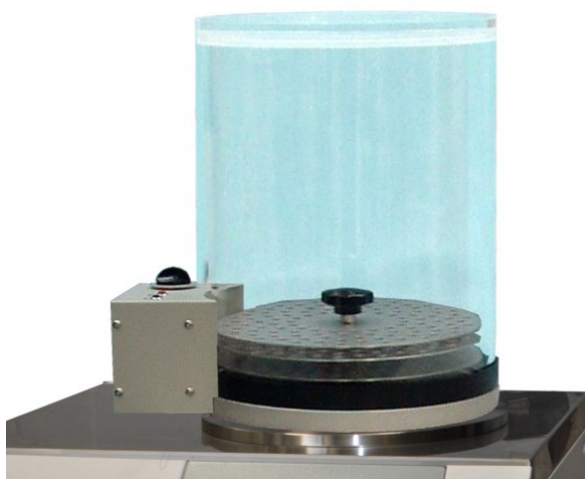
will minimize the risk of trays freezing to the chamber. The refrigeration unit is then switched on and allowed to go down to operating temperature. The trays can then be lowered into the condenser chamber to freeze. With vials, several layers of trays can be stacked into the chamber at once. A blank lid can be placed on the top of the chamber to keep warm air and moisture from entering while the product is freezing. The same principle can be used for tray drying although more care is needed when stacking the trays.

#### 3.1.2. Freezing in an external freezer.

The product is prepared in vials or trays and then placed in a -40 °C freezer until it is completely frozen.

#### 3.1.3 The Spin freezer

The spin freezer prevents foaming when vacuum freezing is used. It does this by using centrifugal force. The long thin ampoules sit at an angle with the tops facing in slightly towards the centre. The vials are left to spin on an adjustable timer while the vacuum is applied. The centrifugal force will stop the product from overflowing and a long thin tapered layer will freeze up the side of the slanting ampoule maximizing the surface area.



#### 3.1.4. Flask freezing in a glycol bath

The flasks should only be partly filled then rotated in the freezing glycol so a thin layer freezes evenly around the inside of the flask to maximize the surface area.



### 3.2.1. Drying on plain shelves

Vials, bottles, trays or dishes containing frozen product are arranged on the shelves and lowered into the acrylic chamber.

These shelves are ideal for product that requires slow drying with minimal heat input or small volume drying.



### 3.2.1. Drying on heated shelves

Vials, bottles, trays or dishes containing frozen product are arranged on the shelves and lowered into the acrylic chamber.

These shelves are ideal for product that requires faster drying or higher temperatures. Each shelf has equal heat input and there is a temperature sensor sampling one shelf only. Product should be loaded equally over all the shelves to allow for even drying rates. There are leadthroughs in the lid for the temperature sensor and power supply.

The **Lablyo Mini** requires a separate temperature controller.



### 3.2.3. Drying in a closing device

The closing device is a series of shelves, also for use inside an acrylic chamber. Trays of frozen product are loaded onto it is then lowered into the chamber. When the product is dry the lids on the vials can be closed sealing in either a vacuum or a nitrogen charge. To do this the handle is turned clockwise to close levels 1 and 3 and then anticlockwise to close levels 2 and 4.



### 3.2.4. Drying in a closing device with heated shelves

This combines the closing device with the heated shelves in one unit. For use when extra heat is required in closable vials.



### 3.2.5. Freeze drying with a column or lid manifold

These manifolds use rubber valves to attach the glass freeze drying flasks. The flasks are frozen first and then can be added or removed from the manifold while the refrigeration and vacuum pump are running.

When adding a flask to a manifold that is under vacuum it is important to close the valves on the other flasks that are in use. Open the valve to the newly introduced flask and after a few minutes the rest of the valves can be reopened.



### 3.2.6. Freeze drying with a 48 port ampoule manifold

The 48 port ampoule manifold requires that all 48 ports are used at once.

Ampoules from the spin freeze are a push on seal to the rubber nipples. When the frozen the ampoules are attached then will freeze dry from the vacuum and the ambient heat.

Once the product is dry the ampoules can be removed and sealed.

The ampoules are usually hermetically sealed using a flame to melt the glass tube while it is being twisted.



### 3.2.7. The Lablyo Mini as a standalone cold trap

The Lablyo Mini can be equipped with an adaptor lid to act as a cold trap for vacuum pump protection. It will trap water vapour or any other condensable that would contaminate the vacuum pump oil. It can also be used for vacuum distillation so the condensable product can be collected.

# 4. Installation and Commissioning of the Unit

## 4.1. Site of installation

In order to ensure the air circulation of the heat exchanger, do not place any paper, cloths or similar items behind the unit. The freeze dryer should be positioned horizontally. The ambient temperature should be between approx. +5°C and +30°C. The refrigeration compressor of the freeze dryer is air-cooled. Sufficient air circulation must be ensured. A distance of at least 30cm to the wall should be kept. The unit should not be positioned near radiators or heat sources. In the case of insufficient air circulation or too high ambient temperatures, the temperature and the pressure in the refrigerating system will increase. If the maximum permissible operating pressure is exceeded, this may cause the refrigeration unit to switch off. The following connections are required at the site:

## 4.2. Mains power

The operating voltage on the name plate must correspond to the local supply voltage. Frozen in Time freeze dryers are units of safety class I. The **Lablyo Mini** has a three-wire connection cable with a 230VAC 13 amp fused plug earth contact. The freeze dryer must be on a circuit protected with a 16 Amp fuse or circuit breaker.

## 4.3. Air admittance / Drain valve

The drain valve is also used for air admittance. If bottles have to be sealed in nitrogen the ice condenser chamber can be purged through the drain valve.

Take care not to over pressure the system.

## 4.4. Condensate and defrosting water

The condensate and the defrosting water are discharged through the drain valve.

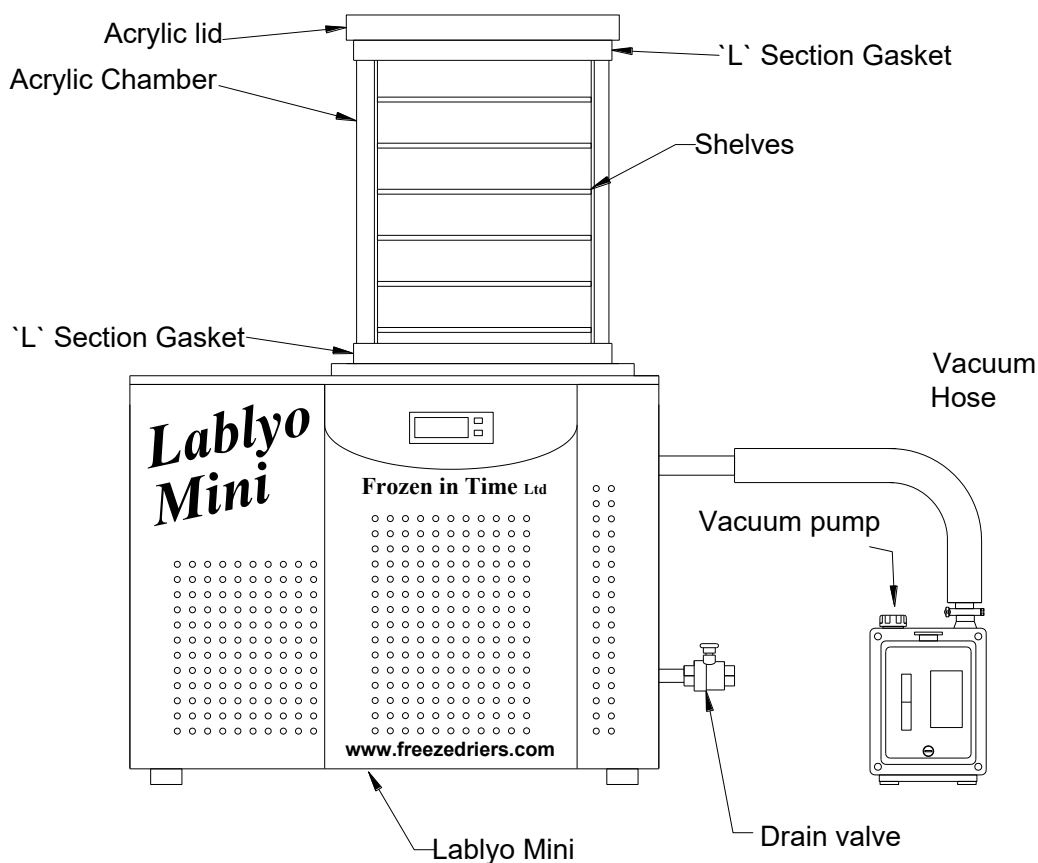
## 4.5. Vacuum pump exhaust gases

The oil mist from the vacuum pump is normally trapped in an exhaust filter.

If this is not the case, the oil mist has to be discharged. A hose can be connected to the exhaust flange of the vacuum that leads into the open air or a vent. During installation of the pipe special care must be taken that condensate cannot flow back into the pump.

## 4.6. Initial start-up

Prior to start-up, make sure that the freeze dryer has been properly set up and installed

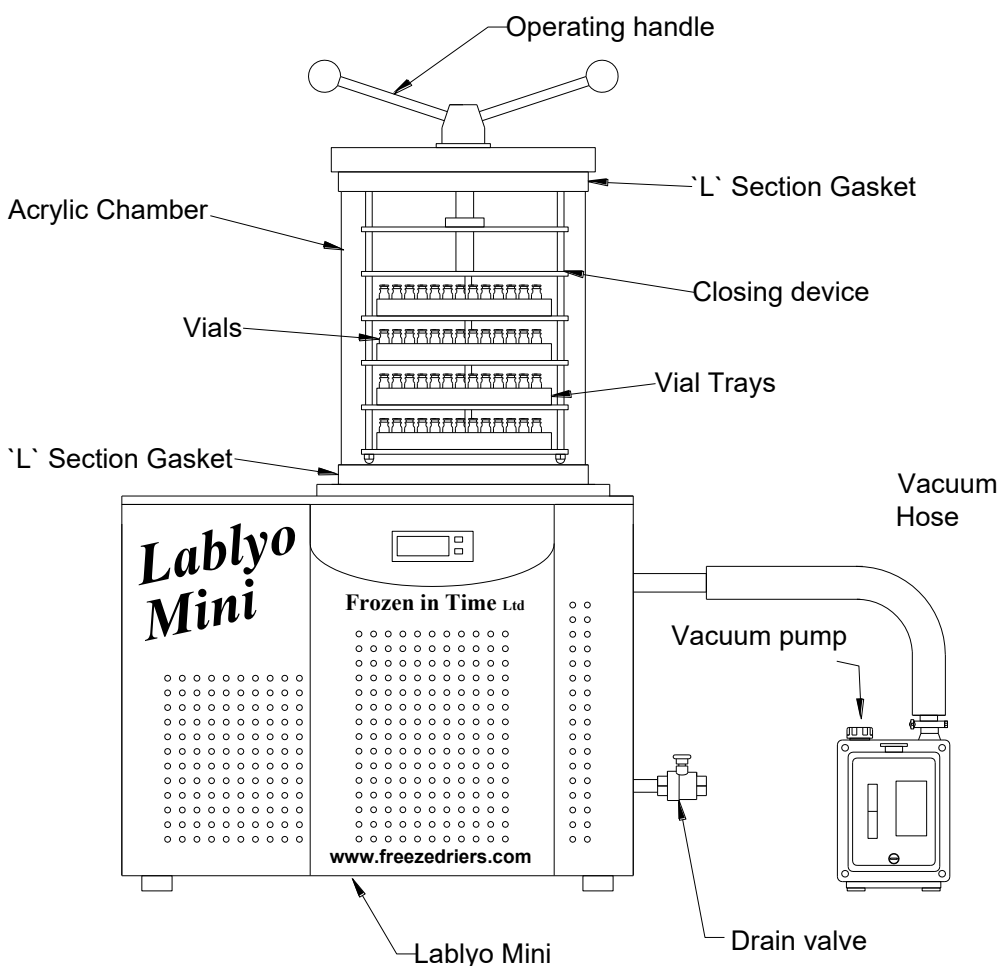


### Installation of the vacuum pump

The vacuum pump can be powered through the Lablyo Mini via the IEC socket on the left hand side. Make sure that the vacuum exhaust gases are filtered or carried off.

## 4.7. Installation of accessories

### 4.7.1. Vial closing device

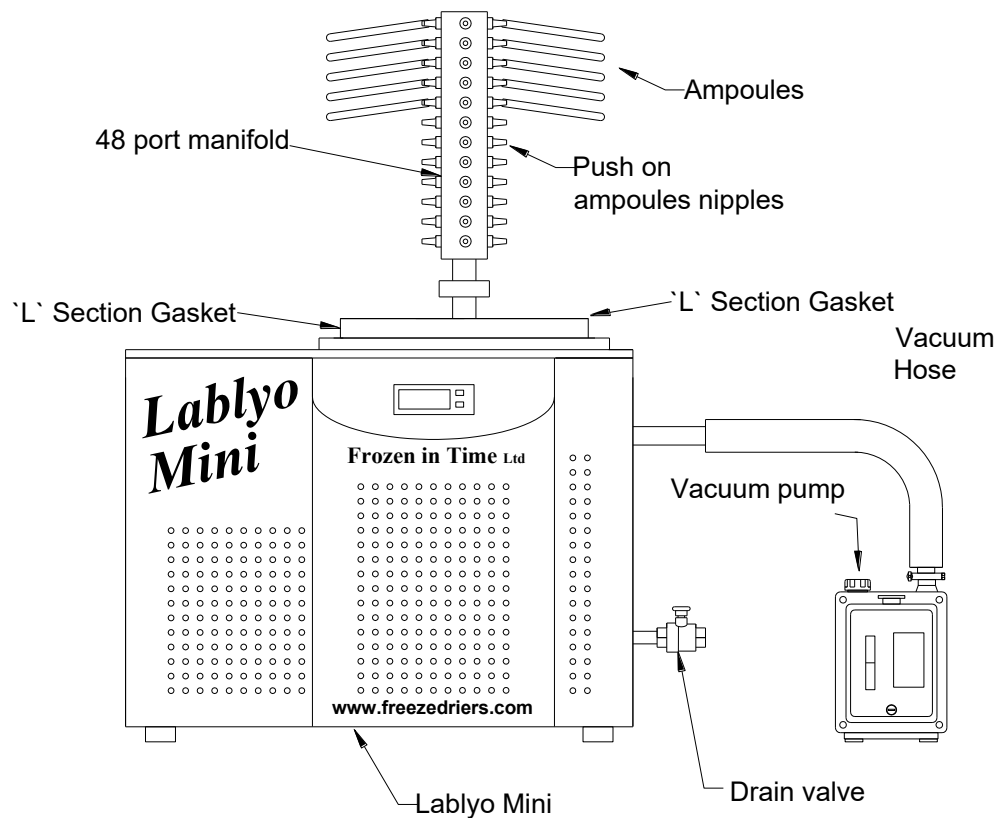


#### **FIT/LYO/22/0**      **Vial Closing Device**

##### Additionally requires:

Acrylic drying chamber	FIT/LYO/01/0
2 x `L` section gaskets	FIT/LYO/40/0
4 x Trays 230mm	FIT/LYO/34/0

#### 4.7.2. 48 port ampoule manifold



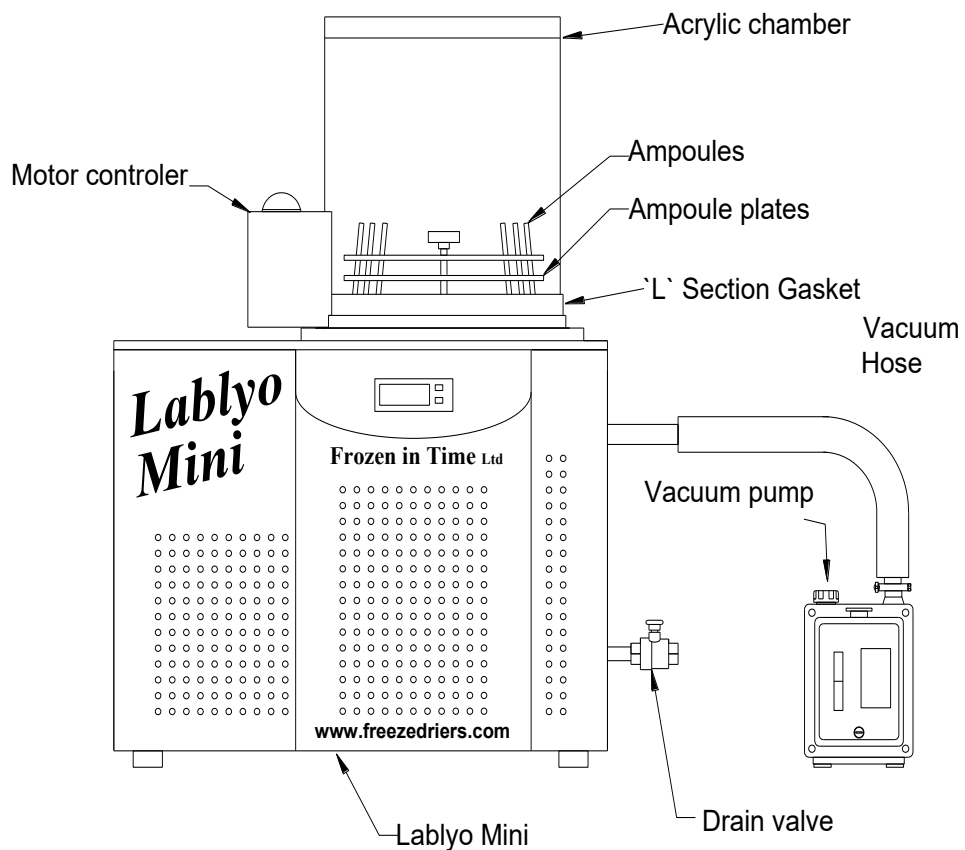
**FIT/LYO/25/0**      **Lid with ampoule manifold 48-port**

Additionally requires:

1 x 'L' section gasket

FIT/LYO/40/0

### 4.7.3. Spin freezer



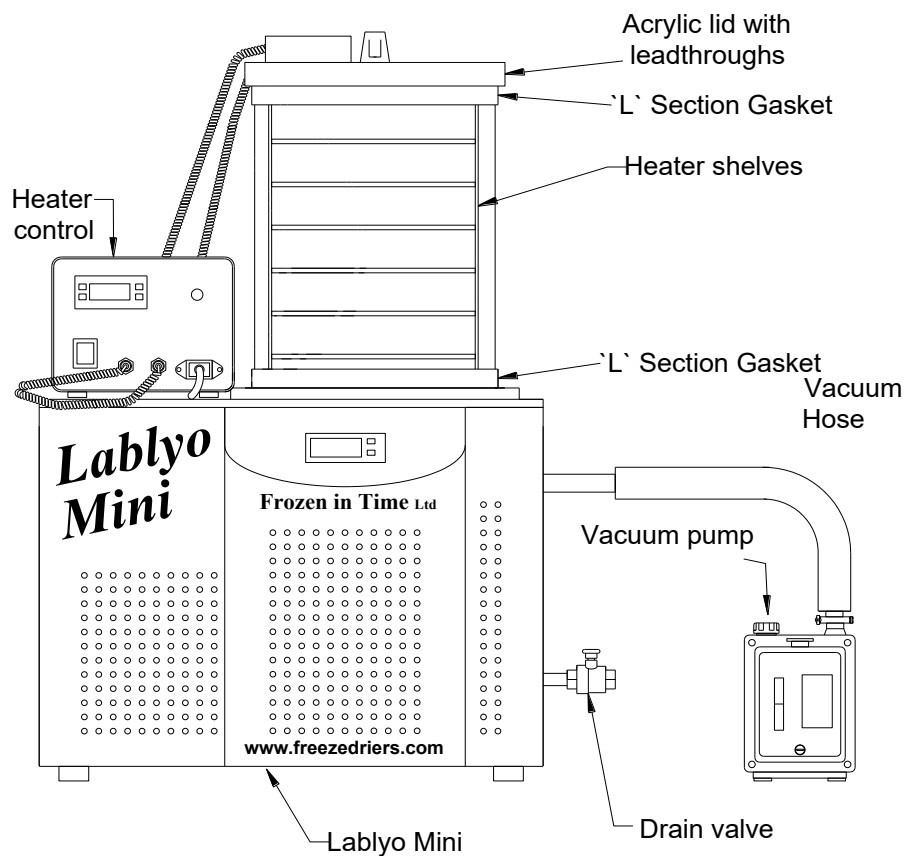
#### **FIT/LYO/28/0** Spin Freeze with 1 x set carrier plates

Includes `L` section gasket

Additionally options:

Extra Spin Freeze plates      FIT/LYO/31/0

#### 4.7.4. Heated shelves



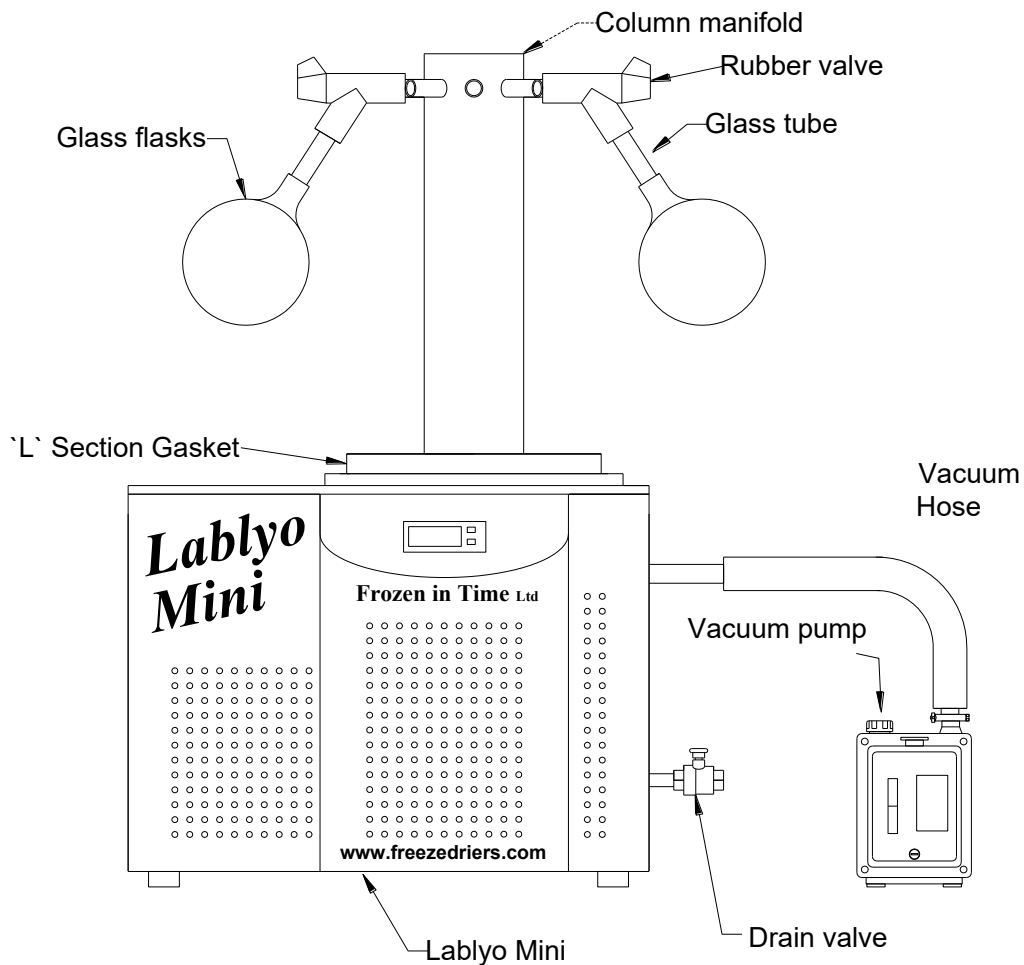
#### **FIT/LYO/19/0**

**Heated Shelves, 6 shelves, temperature controlled**

##### Additionally requires:

Acrylic drying chamber	FIT/LYO/01/0
2 x 'L' section gaskets	FIT/LYO/40/0
6 x Trays 230mm	FIT/LYO/34/0

#### 4.7.5. 8 port column manifold



#### **FIT/LYO/13/0**      **Column manifold, 8-port**

##### Additionally requires:

1 x 'L' section gaskets

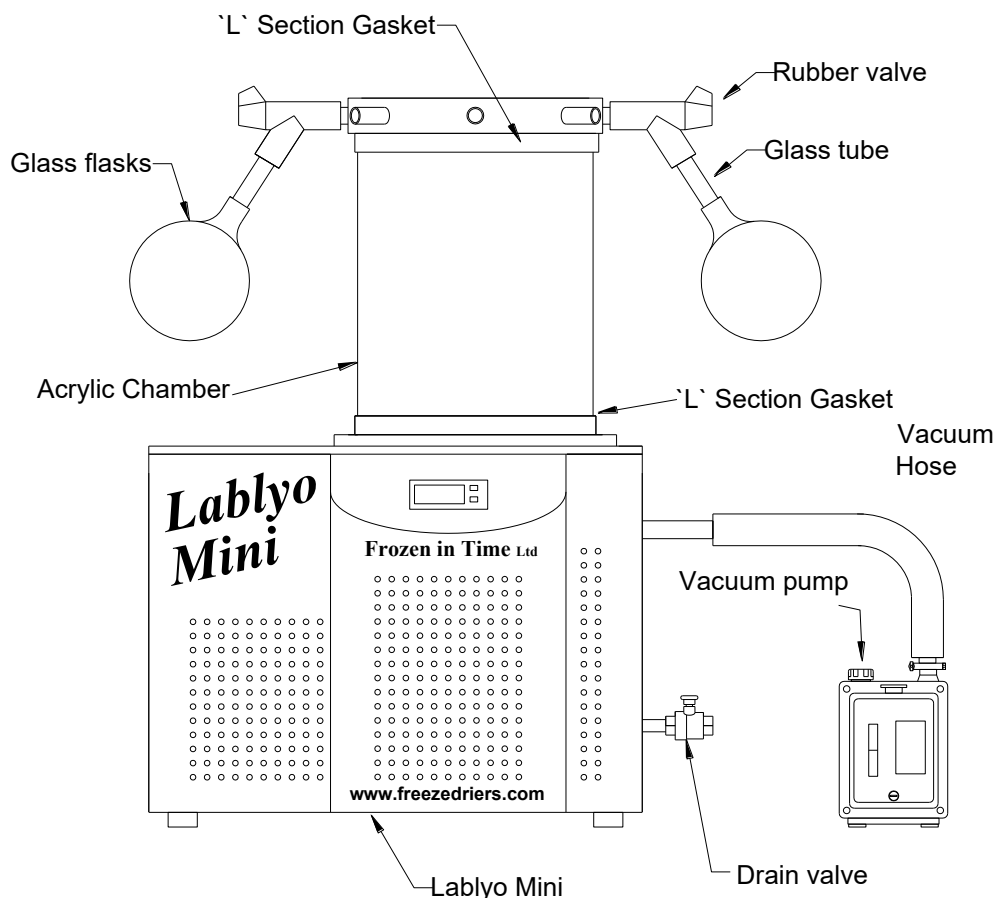
FIT/LYO/40/0

8 x Quick seal valves

FIT/LYO/43/0



#### 4.7.6. 8 port lid manifold



#### **FIT/LYO/6/0 Lid manifold 8-port**

##### Additionally requires:

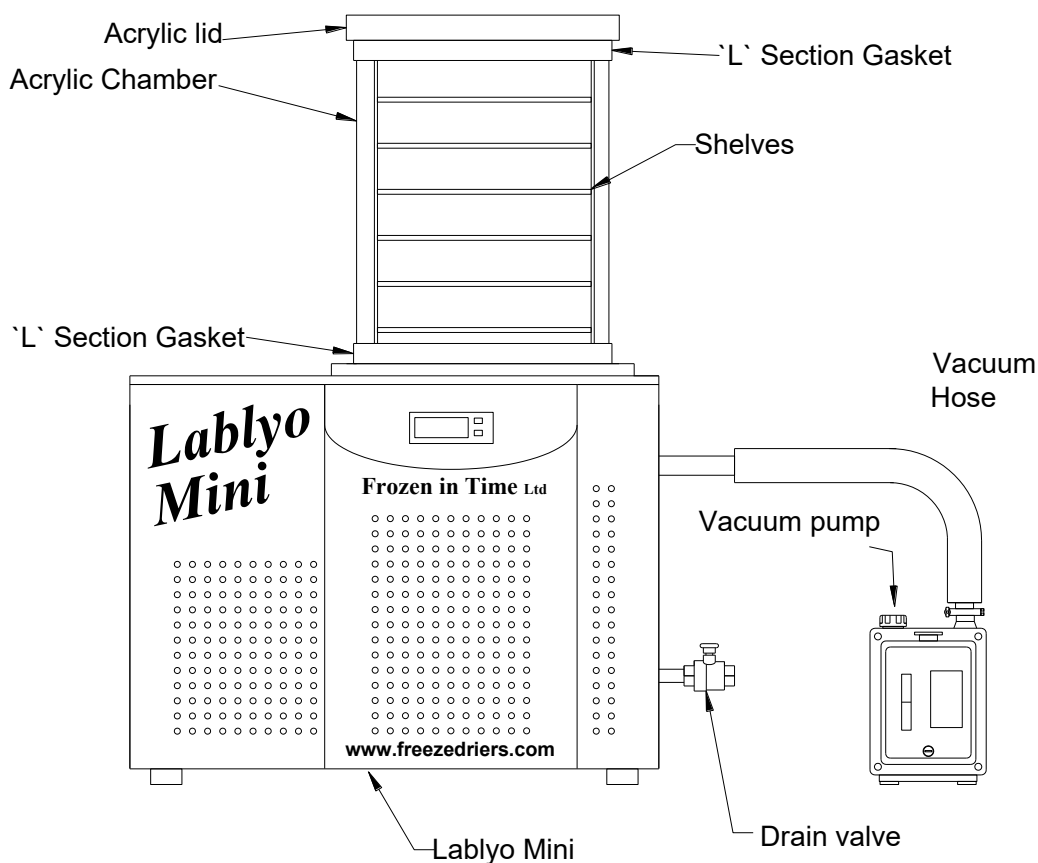
Acrylic drying chamber	FIT/LYO/01/0
2 x 'L' section gaskets	FIT/LYO/40/0
8 x Quick seal valves	FIT/LYO/43/0

##### Additionally options:

6 shelf rack	FIT/LYO/03/0
6 x Trays 230mm	FIT/LYO/34/0

To use the Lid manifold as a plain lid without valves it can be turned upside down.

### 4.7.7. 6 shelf rack



#### **FIT/LYO/03/0**      6 shelf rack for acrylic chamber (aluminum)

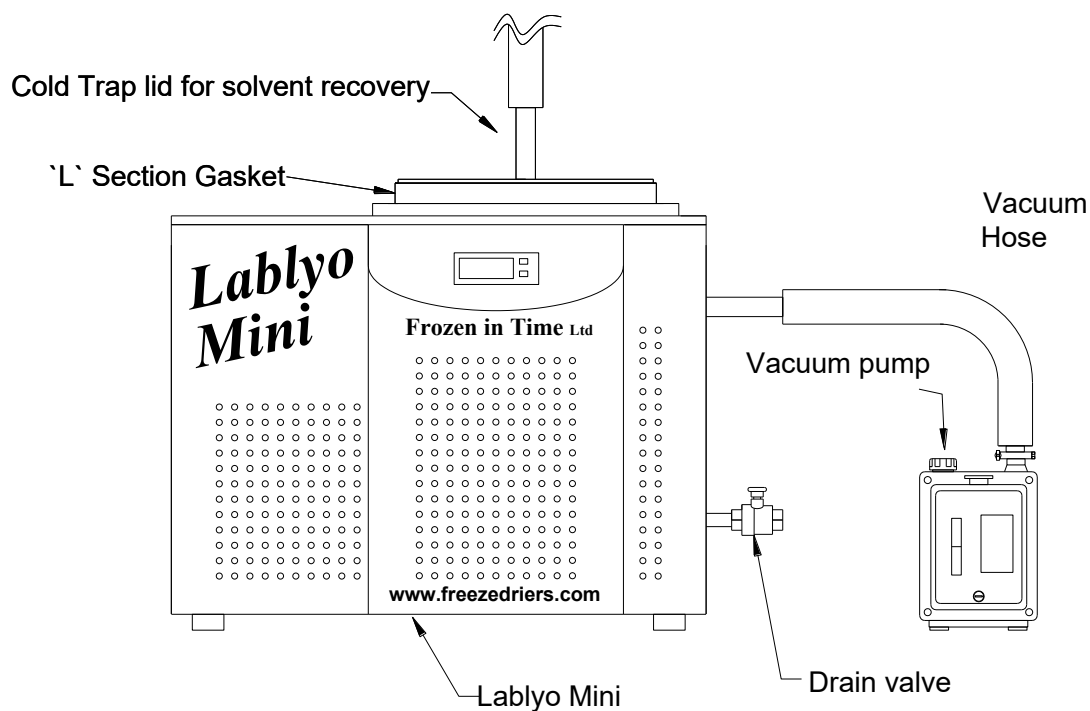
##### Additionally requires:

Acrylic drying chamber	FIT/LYO/01/0
2x `L` section gaskets	FIT/LYO/40/0
Lid for drying chamber	FIT/LYO/12/0

##### Additionally options:

Lid manifold 8-port	FIT/LYO/6/0
4 x Trays 230mm	FIT/LYO/34/0

#### 4.7.8. The Lablyo Mini as a standalone cold trap



**FIT/LYO/9/0** Cold trap lid with hose for solvent recovery or vacuum pump protection

Additionally requires:

1 x 'L' section gaskets      FIT/LYO/40/0

Lid can be made to order with any fittings to the customer's requirements

## 5. Using the Lablyo Mini

### 5.1. Switching on the unit and use as a freeze drier

Switch the Lablyo Mini on at the power switch on the rear of the unit. The indicator light should now be on. The refrigeration will be running. Allow the unit to cool to operating temperature (-50°C or below).

Place pre-frozen samples into the acrylic chamber, fit the lid and turn on the vacuum pump. The chamber is under vacuum once the lid and chamber cannot be removed. The Lablyo Mini does not have a dedicated vacuum sensor.

Leave the unit and vacuum pump running while the freeze drying process is taking place.

For flask freezing see p.15 and attach to the column or lid manifold after pulling a vacuum.

For ampoules see 3.1.3. The Spin freezer (p.15) and 3.2.6. Freeze drying with a 48 port ampoule manifold (p.17)

### 5.2. Defrost

If a defrost is fitted. The red illuminated switch on the side activates the defrost. Defrost on the Lablyo Mini will override the refrigeration. Defrost should only be switched on to defrost ice and it must then be switched off. However the defrost heater is self regulating and will not over heat.

### 5.3. Temperature display

The temperature displays in °C this measures the wall temperature of the condenser chamber. The four control buttons are for factory temperature calibration and not for end user use.

### 5.4. Drain valve

The drain valve should be closed whenever the vacuum pump is activated. It should not be opened while the vacuum pump is still switch on.

The drain valve is used to drain defrosted condensate from the condenser chamber. It is also used to admit air or inert gases into the condenser chamber to break the vacuum.

## 6. Accessories and part numbers

### **FIT/LYO/01/0**      Acrylic drying chamber 300mm OD.

Additionally requires:

2x `L` section gaskets      FIT/LYO/40/0

Required if using (with the Lablyo Mini) :

6 shelf rack	FIT/LYO/03/0
Heated shelves	FIT/LYO/19/0
Lid manifold	FIT/LYO/6/0
Closing device	FIT/LYO/22/0

### **FIT/LYO/03/0**      6 shelf rack for acrylic chamber (aluminum)

Additionally requires:

Acrylic drying chamber	FIT/LYO/01/0
2x `L` section gaskets	FIT/LYO/40/0

### **FIT/LYO/6/0**      Lid manifold 8-port

Additionally requires:

Acrylic drying chamber	FIT/LYO/01/0
2 x `L` section gaskets	FIT/LYO/40/0
8 x Quick seal valves	FIT/LYO/43/0

### **FIT/LYO/9/0**      Cold trap lid with hose for solvent recovery or vacuum pump protection

Additionally requires:

1 x `L` section gaskets	FIT/LYO/40/0
-------------------------	--------------

### **FIT/LYO/12/0**      Lid for drying chamber plain 320mm diameter x 20mm thick

Additionally requires:

Acrylic drying chamber	FIT/LYO/01/0
2 x `L` section gaskets	FIT/LYO/40/0

### **FIT/LYO/13/0**      Column manifold, 8-port

Additionally requires:

1 x `L` section gaskets	FIT/LYO/40/0
8 x Quick seal valves	FIT/LYO/43/0

### **FIT/LYO/16/0**      Column manifold, 16-port

Additionally requires:

1 x `L` section gaskets	FIT/LYO/40/0
16 x Quick seal valves	FIT/LYO/43/0

**FIT/LYO/19/0      Heated Shelves, 6 shelves, temperature controlled**

Additionally requires:

Acrylic drying chamber	FIT/LYO/01/0
2 x `L` section gaskets	FIT/LYO/40/0

**FIT/LYO/22/0      Vial Closing Device**

Additionally requires:

Acrylic drying chamber	FIT/LYO/01/0
2 x `L` section gaskets	FIT/LYO/40/0

**FIT/LYO/25/0      Lid with ampoule manifold 48-port**

Additionally requires:

1 x `L` section gasket	FIT/LYO/40/0
------------------------	--------------

**FIT/LYO/28/0      Spin Freeze with 1 x set carrier plates**

Additionally options:

1 x Extra Spin Freeze plates	FIT/LYO/31/0
------------------------------	--------------

**FIT/LYO/34/0      Trays 230mm for vials or tray drying x1**

Additional option for the:

6 shelf rack	FIT/LYO/03/0
Heated shelves	FIT/LYO/19/0
Closing device	FIT/LYO/22/0

**FIT/LYO/37/0      Vacuum hose 1m for vacuum pump**

Additional option for the:

Vacuum Pump	FIT/LYO/59/0
-------------	--------------

**FIT/LYO/40/0      `L` section gaskets for accessories**

Additional option for the:

Column manifold, 8-port	FIT/LYO/13/0
Column manifold, 16-port	FIT/LYO/16/0
Lid manifold 8-port	FIT/LYO/25/0
Acrylic drying chamber	FIT/LYO/01/0
Lid for drying chamber	FIT/LYO/12/0

**FIT/LYO/43/0      Quick seal valves**

Additional option for the:

Column manifold, 8-port	FIT/LYO/13/0
Column manifold, 16-port	FIT/LYO/16/0
Lid manifold 8-port	FIT/LYO/16/0

# 7. Troubleshooting

## 7.1. Power failure

In the event of a power failure in the drying phase, the batch may become unusable. Whether the batch can be saved or not depends on the drying phase the product was in when the power failure occurred. If power returns within a few minutes then it is unlikely that any damage will have occurred. It is important to distinguish between the primary drying phase and the secondary drying phase. The product is in the secondary drying phase if the residual moisture has reached approximately 5 %. Below this value, the product is generally not damaged by a power failure.

If the product is in the primary drying phase, we recommend removing it for refreezing.

It is advisable to defrost the condenser chamber at this point.

If the product is considered to be still usable then it can be placed back in the freeze drier and the process can be started again.

## 7.2. Insufficient vacuum

### 7.1.1. Easy initial checks

Check that the drain valve is closed. Remove the accessory and seal the top of the condenser chamber with a blank lid and a lightly greased 'L' section gasket.

If the lid now seals it indicates that there is a leak in the accessory.

If the lid does not seal then the drain valve, vacuum hose or vacuum pump is at fault.

Check that the vacuum pump is running and that there is suction. If there is, check that the hose push on connections between Lablyo Mini and vacuum pump are tight. Make sure that the drain valve is not leaking by checking for suction when it is closed.

If the accessory is leaking examine every port and push on fitting. Lightly grease any sealing parts and press down on chamber or manifold in order to assist the sealing gaskets.

### 7.1.2. Checks to make using a vacuum sensor

The following steps require that there is no ice or water inside the condenser chamber. Dry the chamber with a cloth. To test the Lablyo Mini, connected to the vacuum pump and put a blank lid and seal on the mouth of the chamber. It will not achieve the same level of vacuum as a direct reading off the pump but it should probably be lower than 0.1 mbar. The next thing to do would be to fit the accessory if it is a manifold with rubber valves then these should all be closed. If it is a 48 port manifold then all 48 ports need to be blanked off or fit with ampoules.

All accessories with acrylic chambers need to be assembled complete.

To check the vacuum pump directly it is necessary to use a separate vacuum sensor. Make sure that the vacuum pump is warm and there should be a vacuum reading of 0.04 mbar or less.

## 7.3. Unit does not work

If the indicator light does not work and the refrigeration system is not running after the mains switch has been activated, the following tests must be performed:

Check that the Lablyo Mini is plugged in.

Check the breakers or fuses for the circuit.

Check the plug fuse.

## 7.4. Insufficient ice condenser temperature

The refrigeration will stop if the ambient temperature is too high or the airflow is restricted to the heat exchanger. Once the permissible operating conditions are reached again the refrigeration unit is switched on automatically via the motor protection switch or via the pressure switch.

The minimum ice condenser temperature of approximately -55°C or -85°C is reached when the ice condenser is not under load. Sufficient air circulation is very important. Do not place any objects behind the unit!

# 8. Maintenance

## 8.1. Ice condenser chamber

Before each start-up, ensure that all water residues have been removed from the ice condenser chamber. If necessary, wipe the ice condenser chamber dry. Before every drying process it is recommended to open and close the drain valve.

## 8.2. Heat exchanger

The refrigeration heat exchanger is used to cool the refrigerant compressed by the refrigeration unit. The heat exchanger is located at the back of the unit and should be checked for dust or dirt residues every few months. It must be cleaned whenever necessary. The heat exchanger can be cleaned best by brushing, by using a vacuum cleaner from the outside or by using compressed air from inside of the unit. Excessive build up on the heat exchanger leads to a decrease in performance and may cause a failure of the unit!

## 8.3. Rubber valves and seals

Special attention must be paid to the rubber valves. If the valves are stiff, they must be dismantled, cleaned, slightly greased with vacuum grease and reassembled.

## 8.4. Vacuum pump

For the maintenance of the vacuum pump, please refer to the separate operating manual. Additionally, we would like to emphasize the following points: The oil level of the vacuum pump must be regularly checked at the sight glass (in case of continuous operation at least once a day). Top up oil to the required level via the oil inlet. Due to possible operation with gas ballast, oil consumption cannot be avoided. For topping-up see the operating manual of the pump. The oil change should always be carried out with warm pump.

## 8.5. Exhaust filter

If the unit is equipped with an exhaust filter (necessary if the exhaust gases cannot be extracted into the open air or into a vent), take care that the condensate in the filter does not rise too high.



## 8.6. Cleaning

### 8.6.1. Cleaning the freeze dryer

Use soapy water or other water-soluble, mild cleaning agents to clean the freeze dryer. Avoid corrosive and aggressive substances. Do not use alkaline solutions or solvents or agents with abrasive particles. Remove product residues from the ice condenser chamber using a cloth. It is recommended to open the lid of the condenser chamber when the freeze dryer is not in use so that moisture can evaporate.

**If there is the risk of toxic, radioactive or pathogenic contamination, special safety measures must be considered and adhered to.**

### 8.6.2. Cleaning the accessories

When cleaning accessories, special safety measures must be taken as these are measures to ensure operational safety and reliability. Cleaning of accessories should be carried away from the freeze dryer once a week or preferably after every use. Aluminium accessories are particularly prone to corrosion.

**If there is the risk of toxic, radioactive or pathogenic contamination, special safety measures must be considered and adhered to.**

### 8.6.3. Maintenance of the air admittance/drain valve

Special attention must be paid to the air admittance/drain valve. If residues from previous drying processes deposit on it, the freeze dryer may not achieve correct vacuum levels. Therefore, take care that no product or other residues will get into the valve.

### 8.6.4. Disinfecting the drying chamber, the lid and the accessories

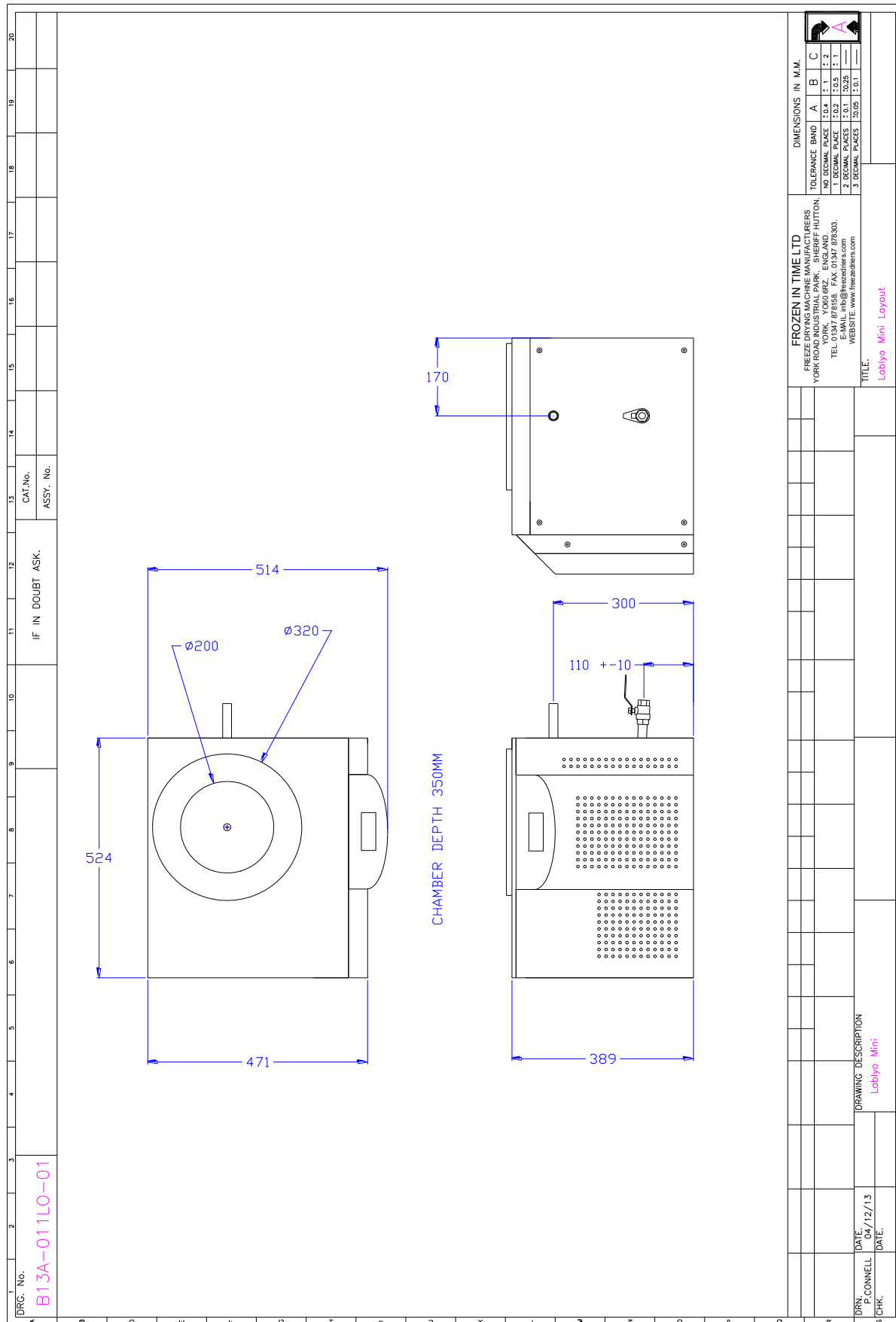
Check compatibility with the lid and the drying chamber. The freeze dryers and the accessories are made of different materials. A possible incompatibility must be considered. For autoclaving, the temperature stability of the individual materials must be taken into consideration. Please consult us if in doubt.

**If dangerous materials are used, the freeze dryer and the accessories must be disinfected.**

## 8.7. Checks by the operator

The operator has to ensure that the important parts of the freeze dryer that are necessary for safety are not damaged. This especially refers to:

- Lid or drying chamber
- Seals
- Oil level of vacuum pump
- Accessories, especially changes like corrosion, wear and abrasion of material etc.
- PAT test must be carried out annually.



## 9. IQ/OQ Qualification

This Qualification Protocol is solely intended to be used with Lablyo Mini freeze driers which are new or relocated.

It is written to assist the end-user in validation of predetermined specifications. The protocol begins with planning the site for the piece of equipment and therefore is of value prior to receipt of delivery.

The use of this document does not replace the need for the Lablyo Mini User's Manual and is in this case attached. Information within the User's Manual is required to complete this IQ/OQ

Protocol. If the manual has been misplaced, copies can be obtained from the manufacturer or down-loaded from their website, [www.freezedriers.com](http://www.freezedriers.com)

### 9.1. Installation Qualification

Step	Description	Specification or Acceptance Criteria	Result	
<b>1</b>	<b>Site Planning</b>			
1a	Space Requirements	Refer to <b>1.3 Technical data of freeze dryer</b>  Check in the User's Manual for dimensions of the model you have chosen. Has adequate floor or counter space been provided for placement of the equipment? (A minimum of 100mm is required between the back of a freeze dryer and the wall and between the sides and the walls for proper airflow through the refrigeration system.)	Y	N
1b	Electrical Service	Refer to the User's Manual for electrical requirements. Are services available for the equipment to be connected to an electrical circuit of adequate size and the proper voltage?	Y	N
1c	Vacuum Pump	Refer to the User's Manual. Have accommodations been made to provide a suitable vacuum pump? It must be capable of: at least 100 Liters/min With an inlet fitting suitable for a ¾-inch ID vacuum hose on one end and a KF25 on the other. It must have the same voltage rating as the freeze dryer? And have the means to be powered by a IEC connection.  (An oil mist eliminator exhaust filter is recommended.)	Y	N
1d	Accessories	Freeze drying chambers or manifolds are not included with the freeze dryer. Has an appropriate accessory been purchased to complete the required freeze drying process?	Y  N/A	N

<b>2</b>	<b>Prior to operation</b>			
2a	Damage Claims	Have the delivered products been inspected for any signs of damage that may have occurred while in transit? Keep packaging materials until inspection is complete. <b>WARNING:</b> Do not attempt to pull a vacuum on a freeze dryer with any damage to any of the accessories manifolds/chambers etc. Implosion and potential for injury can occur. If damaged contact Frozen in Time 01347 878158 or the distributor from whom it was purchased	Y	N
2b	Handling Solvents	Has the Safety Officer or equivalent reviewed the safe handling and disposal of solvents trapped as well as used vacuum pump oil?	Y N/A	N
2c	Manifold Installation	Place the desired drying chamber or manifold on to the top of the Lablyo Mini condenser chamber flange.  Do you have the correct number and size of 'L' section gaskets to make the vacuum seal?	Y N/A	N
2d	Vacuum Pump Installation	Install the vacuum pump per the User's Manual. Is the pump attached to the vacuum port at the top of the chamber with the correct rubber hose and clamps provided?	Y	N
2e	Vacuum Pump Electrical	Is the vacuum pump plugged into the rear of the freeze dryer and the pump's power switch turned to the ON position?	Y	N
	Vacuum Ballast	The vacuum pump's ballast should remain closed. Is the pump's ballast closed?	Y	N
	Electrical Connection	Plug the freeze dryer into a dedicated electrical outlet. Has the electrical service been verified to be adequate in size and voltage? (The ID plate on the rear of the freeze dryer has the electrical requirements.)	Y	N
2e	Electrical Grounding	Has the ground on the electrical service been verified?	Y	N

## 9.2. Operational Qualification

Step	Description	Specification or Acceptance Criteria	Result	
<b>1</b>	<b>Freeze Drier</b>			
1a	Refrigeration	With the freeze dryer system at ambient temperature, turn the Main Power Switch ON. Does the refrigeration system start? Record the time it started. _____	Y	N
1b	Vacuum Pump	Make sure all vacuum fittings and seals are in place. Start the Vacuum Pump. Record the time it started. _____	Y	N
1c	Refrigeration Effectiveness	Does the condenser chamber temperature reach -47°C in less than 40 minutes? (With the system under vacuum and 21°C ambient temperature.) NOTE: Freeze Dryers are tested to -55°C or in the factory. Conditions may vary in the field resulting in warmer acceptance temperatures.	Y	N
1d	Verify Displayed Temperature	The temperature indicated on the LCD display is measured on the collector coil. There is a mobile probe that hangs free inside as well. The values were calibrated at the factory by correlating its reading with that of a reference gauge attached to a sensors. Does the display correlate to the reference Gauge +/- 2°C? Ref. Instrument? _____ If the temperature does not correlate, contact Frozen in Time 01347 878158	Y  N/A	N
1e	Vacuum Leaks	Verify that the system is leak-free by continuously running the vacuum pump with the refrigeration system ON. The rate the freeze dryer without samples achieves a low level of vacuum, (less than 13 Pa), it is dependent upon many factors: Inside volume & surface area of the system. Cleanliness or cleaners used on interior. Condition & size of the vacuum pump. Period of time the parts have been exposed to environmental conditions. Based on the freeze dryer's displayed vacuum level, the freeze dryer should reach its lowest level in less than 18 hours. If not, refer to Vacuum Troubleshooting Guide in the User's Manual. Does the system reach a displayed vacuum level of less than 6Pa in 18 hours?	Y	N
1i	Defrost	With the refrigeration switched OFF, press the "defrost" button ON. Does the condenser chamber become warm to the touch?	Y N/A	N

<b>2</b>	<b>Routine Maintenance</b>	Below are helpful hints to be included in the organization's preventive maintenance plan.		
2a	Vacuum Grease	Vacuum grease should be applied to rubber components as required. In general, vacuum grease should be the first step in trouble shooting vacuum leaks. Thin layers of grease are adequate for all seals. Only use grease specially formulated for low vacuum service. Is vacuum grease readily available and documented? Type of grease used? _____	Y	N
2b	Vacuum Pump Oil	The vacuum pump oil should be changed as needed. Change oil that appears cloudy or discolored. At a minimum, oil should be changed every 1000 hours of service. Has there been a preventive maintenance plan established for the vacuum pump? Type of oil to be used? _____	Y	N

<b>3</b>	<b>Personnel Training</b>			
3a	User Training Related to Equipment	Have personnel that will use the Lablyo Mini freeze drier been adequately trained?  Are personnel familiar with: All the buttons and displays on the front; Collector capacity limits before defrosting; Defrosting and draining methods; Safe handling of solvents drained; The use of vacuum grease; Opening, closing and venting sample valves; Cleaning of the freeze dryer and neutralization of acids?	Y	N
3b	User's Manual	Are the personnel who are to use or maintain the Lablyo Mini able to locate the User's Manual for the machine?	Y	N

## 9.3. Summary

Lablyo Mini freezedrier IQ/OQ Document

Equipment Location \_\_\_\_\_

FreeZone Ser. No. \_\_\_\_\_ Model No. \_\_\_\_\_

User Protocol \_\_\_\_\_ Revision (or Date published) \_\_\_\_\_

Contact (print name): \_\_\_\_\_

Title: \_\_\_\_\_

Review the “Response” columns for answers of “NO.” Use the area below to describe the deficiency or unacceptable results. Those deficiencies are to be followed with an instruction for “Corrective Actions.” Once acceptable results are obtained, the deficiency is “accepted” by signing the Corrective Action.

Step	Deficiency followed by Corrective Action	Signature