

STEM RS Heater/Stirrer Reaction Stations

RS600, RS900, RS1000, RS2400, RS2500, RS5000

Electrothermal's heating and stirring Reaction Stations can be used for a wide range of applications from simple synthesis to process optimisation. High performance magnetic stirrers beneath each sample position ensure maximum coupling between the stirrer bar in the sample and the powerful motor. The range accommodates sample sizes from 2ml to 250ml in a wide range of vessel sizes and heating formats. Adaptor sleeves can be used to accommodate non-standard vessel sizes.

The well-insulated reaction unit keeps the casework "cool-to-touch", gives quick heat-up times, excellent temperature uniformity across the block, and a thermal cut-out eliminates runaway conditions. The combination of precise electronic control and rugged design ensures operator safety, while a PTFE coating protects the block from chemical spills. (The high temperature models do not have a PTFE coating).



6 models of STEM RS Reaction Stations, giving you the choice of:

RS600 Reaction Station

- 6 position reaction station
- 57.5mm diameter vessels
- Can accommodate 40mm and other diameter vessels with appropriate adaptor sleeves
- Sample sizes up to 250ml
- Controlled temperature range from ambient to 250°C
- Powerful stir speed from 400 to 2000rpm
- Bi-directional stirring option
- Manual and external control via the RS232/RS485 interface ports
- Optional PC-based external control software is available to schedule stir/heat profiles over varying time delays
- Variety of accessories available including reflux and inerting head accessory, rotary evaporator adaptors, phase separation heads, filtration adaptors, glass condensers, temperature probes, and a selection of stir bars
- High temperature RS600H option with temperature range from ambient to 300°C
- Compact footprint for easy integration onto a robotic platform

RS900 and RS1000 Reaction Station

- 10-position reaction station
- 24mm/25mm diameter vessels
- Can accommodate 16mm and other diameter vessels with appropriate adaptor sleeves
- Sample sizes from 10ml to 30ml
- Controlled temperature range from ambient to 150°C
- Manual and external control via the RS232 interface port
- Powerful stir speed from 400 to 2000rpm
- Compact footprint for easy integration onto a robotic platform
- Low running costs as only 300W power consumption

RS1000 Reaction Station (only)

All features of the RS900 plus:

- Manual and external control via the RS232/RS485 interface port
- High temperature RS1000H option with temperature range from ambient to 300°C
- RS1000H has 600W power consumption as it can operate at higher temperature

Lean "Lab-in-a-box"

Work leaner, work smarter

Reaction stations offer a succinct heating/cooling/stirring solution to over-crowded laboratories, and coupled with the right accessories, may be regarded as a "lab-in-a-box". Hence, Electrothermal are currently developing a whole raft of accessories to make our reaction stations even more useful to laboratory scientists of all disciplines.

RS2500



RS5000



RS2500, RS2400 Reaction Stations

- Choice of 24 (RS2400) and 25 position (RS2500) reaction station
- 24mm/25mm diameter vessels
- Can accommodate 16mm and other diameter vessels with appropriate adaptor sleeves
- Sample sizes from 10ml to 30ml
- Controlled temperature range from ambient to 150°C
- Powerful stir speed from 400 to 2000rpm
- Manual, and external control via the RS232/RS485 interface port
- Compact footprint for easy integration onto a robotic platform

RS5000 Reaction Station

- 50 position reaction station
- 24mm/25mm diameter vessels
- Can accommodate 16mm and other diameter vessels with appropriate adaptor sleeves
- Sample sizes from 10ml to 30ml
- Controlled temperature range from ambient to 150°C
- Powerful stir speed from 400 to 2000rpm
- Manual and external control via the RS232/RS485 interface ports
- Compact footprint for easy integration onto a robotic platform

RS9000 Heater/Shaker Reaction Station

- Very versatile as reaction blocks can be inter-changed to accommodate different vessels and tray formats
- Can be used on a robotic platform or within a laboratory
- Choice of touchscreen control or external control via RS232/RS485/ GSI OC ports
- Operates over a temperature range of ambient to 150°C
- Agitation speed of 100-600 rpm
- Optional temperature probe
- 2-axis gyration system on solid bronze chassis
- Continuous 24 hours heating and agitation
- Auto-park feature enables use on robotic platforms
- Soft start ramping to minimise splashing
- Very safe to operate

RS9000



STEM Omni Reaction Stations

Parallel synthesis

The STEM Omni Reaction Stations enable you to conduct parallel synthesis for either 6 or 10 reactions simultaneously.

They offer a modular design which enables you to build up your own parallel synthesis system in 5 steps, by ordering your choice of:

Step

- 1 Omni Controller (same for all Omni range)
- 2 Omni heater cartridge
- 3 Omni cooling plug
- 4 Omni reaction vessels
- 5 Omni reflux head

The Omni Controller base unit remains the same for all Omni models, and one base unit can accommodate sample volumes from 2ml to 250ml. All heating blocks, glassware and reflux heads are interchangeable. The Omni Reaction Station footprint is compact and can be placed into any fume hood, or within a small bench space.



OS1025

OS6250



Omni 1000 and 6000 Series

OS1025, OS6050, OS6100, OS6250

You have a choice of either 10 or 6 places within your Omni Reaction Station:

- 10 place unit allows up to 10 reactors with a working volume of:

Working volume	Omni Model
2 -25ml	OS1025

- 6 place units allow up to 6 reactors with working volumes of:

Working volume	Omni Model
5- 50ml	OS6050
50- 100ml	OS6100
100- 250ml	OS6250

With the exception of different volumes, all of the models within the Omni 1000 and 6000 series Reaction Stations offer the same outstanding performance features:

- Interchangeable , modular design
- Stirring stability and speeds of 100 - 2000 rpm
- Simple menus and touch pad interface to control
- All heater cartridges are equipped with "in block heaters" that allow temperatures up to 220°C
- High level of stability ($\pm 1.5^{\circ}\text{C}$) across the heater cartridge itself
- An external temperature probe for temperature "control by contents" which increases accuracy to $\pm 0.5^{\circ}\text{C}$
- "Cool to touch" outer casing
- Selected cartridges can also be used in conjunction with a cooling plug to extend the temperature range from - 30°C to 220°C

Key features

Omni Temperature Sensor

1

For fast and more precise temperature control, the temperature probe can be inserted either into a machined pocket in the reaction block or via a thermocouple pocket directly in one of the reaction vessels. The temperature sensor attaches directly into the Omni Controller.

Omni Gas-tight PTFE caps

2

By using a simple bi-directional open/close lever, each reaction vessel can be controlled separately. Each vessel cap has a septum to allow sampling at each vessel position.

Omni Reflux Head

3

Efficient condensing and refluxing, for samples up to 25ml, is provided through the use of a liquid-cooled aluminium reflux head. Cooling is introduced through the inlet/outlet ports. Individual reaction positions are numbered (1-10) for simplified tube and sample identification. A central gas inlet/outlet port, combined with the gas-tight PTFE caps allows for a vacuum to be pulled and/or inert gas (nitrogen) to be ported into each individual tube.

Omni Reaction Vessels

4

24mm and 25mm x 150mm threaded glass reaction vessels which can handle volumes from 2 – 250ml. Solutions can be added and removed through the top of the reaction vessel.

Omni Cooling Plug

5

Allows unit to cool down to -30°C, greatly expanding the types of chemistry you can perform with this equipment. The cooling plug is simple to use: Insert the cooling plug into the reaction unit and attach cooling lines to the inlet/outlet via quick disconnects. Melting ice is no longer a problem with the cooling plug.

Omni Heater Cartridge

6

Encased reaction unit ensures accurate temperature uniformity across the unit. Unique air flow design through ventilation slots beneath and around the rim of the case ensures a cool case temperature, allowing it to be safe to touch.

Omni Controller

7

Used to control both temperature and stirring speed, the Omni Controller is easy to operate. Temperature and speed can be separately enabled to provide complete control of reactions. Both temperature and speed are individually adjustable by touching the up/down keys on the interface. The control panel (on the controller) has 3 indicator lights: "Power On", "Heater On" and "Stirrer On", so that you can closely view the performance of your system. A 2x16-digit display indicates the actual temperature from -30°C to 220°C. Stirring speed is reflected by simply touching the stirrer speed key.

Not Included in the Omni Reaction Station Kit

Omni Cooling Plug (Can be ordered separately)

- Cools to -30°C with chiller
- Gives controlled cooling, $\pm 0.5^{\circ}\text{C}$ accuracy
- Eliminates messy ice bath

Included in the Omni Reaction Station Kit

Omni Reflux Head

- Provides efficient refluxing for up to 25ml sample

Omni Reaction Vessels (except 115V model)

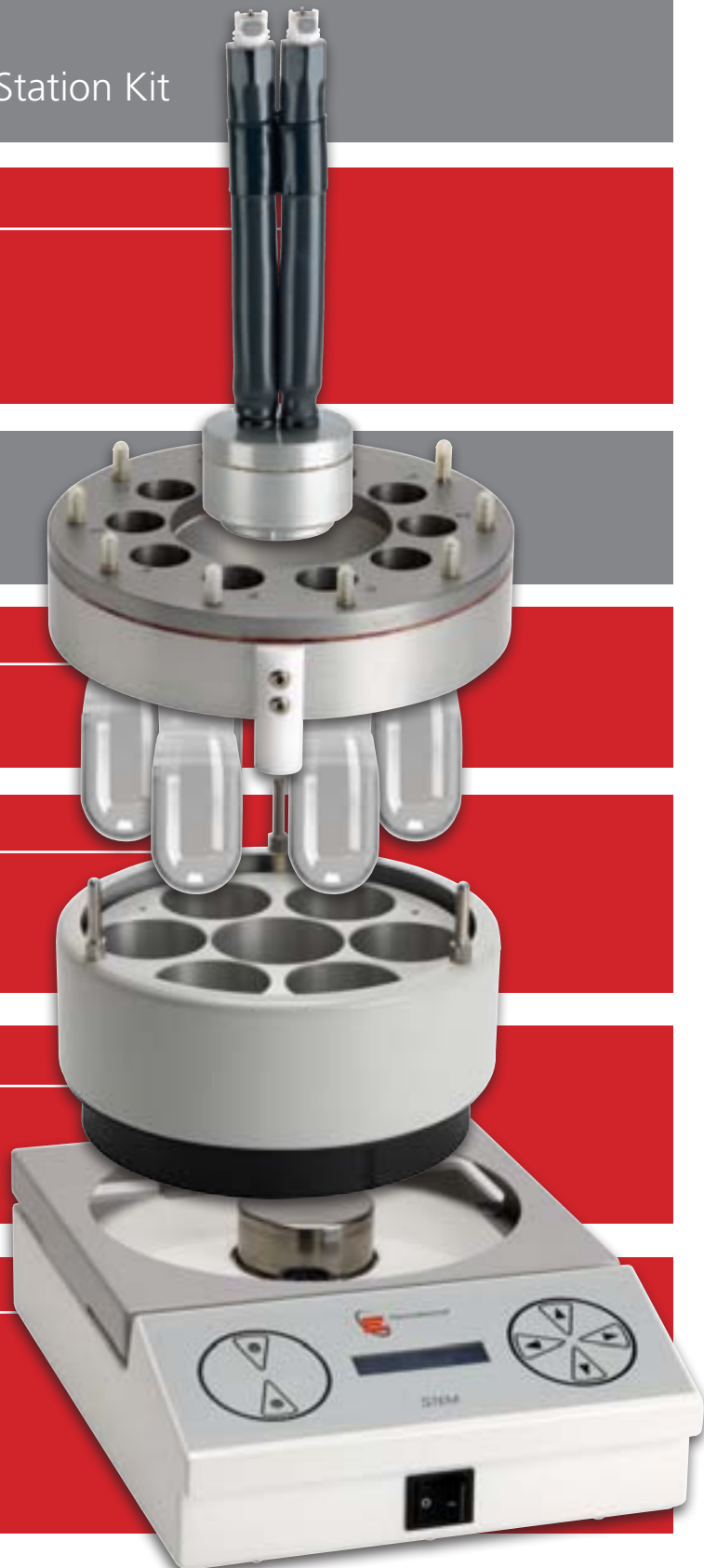
- Choice of vessel sizes
- Cater for 2ml to 250ml samples

Omni Heater Cartridge

- 4 interchangeable cartridge options
- "Cool-to-touch" outer casing

Omni Controller

- Same controller for all 4 Omni models
- Controls temperature and stirring
- Touch pad menus



Part description	OS1025 kit	OS6050 kit	OS6100 kit	OS6250 kit
Omni controller, 230V	•	•	•	•
Omni heater cartridge	10 x 25mm bores	6 x 56mm bores	6 x 56mm bores	6 x 56mm bores
Reducing sleeves*		•	•	•
Not included for 115V models				
Omni reaction vessels (glassware)	10 x 25ml	6 x 50ml	6 x 100ml	6 x 250ml
Not included for 115V models				
Inerting caps	•	•	•	•
Stirrer bars	•	•	•	•
Omni reflux head	•	•	•	•

Notes: *Reducing sleeves may be ordered separately for OS1025

Omni cooling plug is not contained within the kits, but may be ordered separately

Key differences between the three Reaction Station Series

RS, OMNI and Integrity series

Since the OMNI and RS series Reaction Stations provide the same controlled temperature and stir rate to all reaction vessels, they offer direct comparison between different reagent compositions in each flask under the same operating conditions.

In contrast, the Integrity Reaction Stations offers precise and individual control of temperature and stirring rate at each position. (Details of the Integrity Reaction

Stations are available in another brochure available on the Electrothermal website www.electrothermal.com).

Thus, the STEM Omni and RS series Reaction Stations both complement (and could potentially follow-on from) screening reactions carried out in the STEM Integrity Reaction Stations.

	RS series RS600, RS900, RS1000, RS2400, RS2500, RS5000	Omni series Omni 1025, Omni 6050, Omni 6100, Omni 6250	Integrity Series Integrity 6, Integrity 10
Temperature control	Same at all positions	Same at all positions	Can be different and precisely selected for each position
Stirring rate	Same at all positions	Same at all positions	Can be different and precisely selected for each position
Stirring rate	400-2000 rpm	100 - 2000 rpm	0 - 1300rpm ; 350- 1200 rpm
No. of positions	6, 10, 24, 25 or 50	6 or 10	10
Cooling capability	No	Yes to -30°C	Yes to -30°C
Temperature range	Ambient to 150°C Up to 300°C for high temp model	-30°C to 220°C	-30°C to 150°C
Sample volumes	10-30ml; up to 250ml	2-25ml; 5-50ml; 50-100ml; 100-250ml	10-50ml ; 2 -25ml;

Heater/Shaker

RS9000

Temperature control	Same at all positions
Agitation rate	Same at all positions
Agitation speed	100- 600 rpm
No. of positions	Variable, up to 96
Cooling capacity	No
Temperature range	Ambient to 150°C
Sample volumes	Variable, down to 1.5ml

RS9000



RS Reaction Stations



Part Code (230V)	PS80034	PS80067	PS80010	PS80025	PS80050
Part Code (115V)	PS80043	PS80068 (24mm)	PS80033 (24mm)	PS80036 (24mm)	PS80037 (24mm)
Model	RS600	RS900	RS1000	RS2500	RS5000
Higher temperature model	RS600H		RS1000H		
Stirred positions	6	10	10	25	50
Tube diameter	57.5 mm	24 or 25mm	24 or 25mm	24 or 25mm	24 or 25mm
Tube diameter with sleeves	40mm	16mm, 20mm	16mm, 20mm	16mm, 20mm	16mm, 20mm
Sample volume	Up to 250ml	10- 30ml	10- 30ml	10-30ml	10-30ml
Stir speed range	400 - 2000rpm	400 - 2000rpm	400 - 2000rpm	400 - 2000rpm	400 - 2000rpm
Soft start (to full ramp)	Adjustable	Adjustable	Adjustable	Adjustable	Adjustable
	0 – 10 mins	0 – 10 mins	0 – 10 mins	0 – 10 mins	0 – 10 mins
Temperature Range	Ambient to 250°C	Ambient to 150°C	Ambient to 150°C	Ambient to 150°C	Ambient to 150°C
(Ambient)	Ambient to 300°C		Ambient to 300°C		
Temperature Stability	± 0.5°C	± 0.5°C	± 0.5°C	± 0.5°C	± 0.5°C
Time to maximum temp	15 min	15 min	15 min	30 min	30 min
Interface port	RS232/RS485	RS232	RS232/RS485	RS232/RS485	RS232/RS485
	& manual	& manual	& manual	& manual	& manual
Electrical req. (All 230V)	50/60Hz, 600W	50/60Hz, 300W	50/60Hz, 300W	50/60Hz, 800W	50/60Hz, 800W
Dimensions, (w x h x d), mm	248 x 312 x 157	240 x 140 x 215	80 x 150 x 305	250 x 145 x 365	250 x 145 x 460
Shipping Weight, kg	10kg	5.4kg	4kg	10kg	13.8kg

Running costs comparisons

Reaction station series	RS				Omni	
Model	RS900 & RS1000	RS1000H	RS600 & RS600H	RS2400, RS2500 & RS5000	OS1025	OS6050, OS6100 and OS6250
No. of positions	10	10	6	24, 25 & 50	10	6
Maximum temperature	150°C	300°C	250°C & 300°C	150°C	220°C	220°C
Minimum temperature	Ambient	Ambient	Ambient	Ambient	-30°C	-30°C
Sample volumes at each position	10-30ml	10-30ml	Up to 250ml	10-30ml	2 -25ml	5-50ml; 50-100ml, 100ml - 250ml
Power consumption	300W	600W	600W	800W	500W	600W

Maximum running costs @ 14.5p per kW/h

Per hour, £	£0.04	£0.09	£0.09	£0.12	£0.07	£0.09
Per week, £ (8 hours x 5 days)	£1.60	£3.60	£3.60	£4.80	£2.80	£3.60
Per year, £ (50 weeks)	£80	£180	£180	£240	£140	£180
No. of hotplates	N/A	N/A	N/A	N/A	N/A	N/A
1 year's running costs, 8 hours x 5 days/week	£80	£180	£180	£240	£140	£180
10 years' running costs, 8 hours x 5 days/week	£800	£1,800	£1,800	£2,400	£1,400	£1,800
1 year's running costs, 24 hours x 5 days/week	£240	£540	£540	£720	£420	£540
2 years' running costs, 24 hours x 5 days/week	£480	£1,080	£1,080	£1,440	£840	£1,080
3 years' running costs, 24 hours x 5 days/week	£720	£1,620	£1,620	£2,160	£1,260	£1,620
4 years' running costs, 24 hours x 5 days/week	£960	£2,160	£2,160	£2,880	£1,680	£2,160

Notes:

- The average cost of UK electricity was quoted as being 14.5p per kW/h on the UK Government's www.directgov.uk website in Jan 2012
- Although costs of electricity will vary across countries, the general trends will remain the same, being based upon energy consumption figures
- Water usage has not been factored into these calculations. To minimise water usage, it is recommended that water is recycled wherever possible and that it is turned off when the reactions are completed

OMNI Reaction Stations



Cat. No.	OS1025	OS6050	OS6100	OS6250
Model	Series 1025	Series 6050	Series 6100	Series 6250
Voltage	230 & 115 V*	230 & 115 V*	230 & 115 V*	230 & 115 V*
Number of positions	10	6	6	6
Well diameter	24.5/ 25.5mm	40.5mm	56.5 mm	56.5 mm
Working volume	2- 25 ml	5- 50ml	50- 100ml	100- 250ml
Temperature range	Ambient to 220°C	Ambient to 220°C	Ambient to 220°C	Ambient to 220°C
Temperature range using cooling plug and chiller	-30°C to 220°C	-30°C to 220°C	-30°C to 220°C	-30°C to 220°C
Stir speed range rpm	100 - 2000 rpm	100 - 2000 rpm	100 - 2000 rpm	100 - 2000 rpm
Dimensions (w x d x h), mm	235 x 330 x 300	235 x 330 x 450	235 x 330 x 450	235 x 330 x 550
Shipping Weight (kit) , kg				
with glassware	10	10	10	10
Shipping Weight (unit), kg	4.1	4.1	4.1	4.1

*Note: for 115V model, add x1 to the catalogue number. For example OS1025X1

Add x6 suffix for 230V model with EU plug

Running costs comparisons

Reaction station series	Integrity		Hotplate stirrers			
	Integrity 6	Integrity 10	Lower power consumption, 550W		Higher power consumption, 950W	
Model						
No. of positions	6	10	1	1	1	1
Max. temperature	150°C	150°C	300- 450°C	300- 450°C	300- 450°C	300- 450°C
Min. temp	-30°C	-30°C	Ambient	Ambient	Ambient	Ambient
Sample volumes at each position	10 - 50ml	2 - 25ml	Variable	Variable	Variable	Variable
Power consumption	900W	1100W	550W	550W	950W	950W

Maximum running costs @ 14.5p per kWh

Per hour, £	£0.13	£0.16	£0.08	£0.08	£0.14	£0.14
Per week, £ (8 hours x 5 days)	£5.20	£6.40	£3.20	£3.20	£5.60	£5.60
Per year, £ (50 weeks)	£260	£320	£160	£160	£280	£280
No. of hotplates	N/A	N/A	6	10	6	10
1 year's running costs, 8 hours x 5 days/week	£260	£320	£960	£1,600	£1,680	£2,800
10 years' running costs, 8 hours x 5 days/week	£2,600	£3,200	£9,600	£16,000	£16,800	£28,000
1 year's running costs, 24 hours x 5 days/week	£780	£960	£2,880	£4,800	£5,040	£8,400
2 years' running costs, 24 hours x 5 days/week	£1,560	£1,920	£5,760	£9,600	£10,080	£16,800
3 years' running costs, 24 hours x 5 days/week	£2,340	£2,880	£8,640	£14,400	£15,120	£25,200
4 years' running costs, 24 hours x 5 days/week	£3,120	£3,840	£11,520	£19,200	£20,160	£33,600

Notes:

- The average cost of UK electricity was quoted as being 14.5p per kWh on the UK Government's www.directgov.uk website in Jan 2012
- Although costs of electricity will vary across countries, the general trends will remain the same, being based upon energy consumption figures
- Water usage has not been factored into these calculations. To minimise water usage, it is recommended that water is recycled wherever possible and that it is turned off when the reactions are completed

Accessories

For Omni Reaction Stations

Part Code	Accessory	Part Code	Accessory
Suitable for use with the OS1025 Reaction Station		Suitable for use with the OS6000 Series Reaction Stations	
OSCA*	Omni Station Controller 230V	OSCA*	Omni-Station Controller, 230V
ATS10075	Test tubes 24x150mm 22 thread (10 pack)	ATS10096	Reducing column R45 22SVL (6 pack)
ATS10377	Inerting cap and probe hole (10 pack)	ATS10111	Dean & Stark R45 reducer column (2 pack)
AZS4206	Stir bars 10 x 6 oval R/E (10 pack)	ATS10116	Reflux/Inerting head. 6 x 56
OSD1025	Block cartridge, 10 x 25, 230V	ATS10108	50ml Round Bottom flask, 40mm OD,R45, (6 pack)
ATS10115	Reflux/inert head, 10 x 25mm	ATS10092	100ml Round Bottom flask R45 (6 pack)
ATS10031	Stir bar retriever	ATS10094	250ml Round Bottom flask (6 pack)
ATS10063	Temperature probe, 5 pin, PT100	ATS10110	Reducer sleeves 56-40mm (6 pack)
ATS10075	Test tubes, 24 x 150mm, 22 thread (10 pack)	ATS10141	Inerting cap 22mm, (6 pack)
ATS10076	Test tubes, 24 x 150mm, 22 thread pocket (10 pack)	ATS10097	Stir bar 15 x 10 Elip, Rare Earth
ATS10077	Dean & Stark, 24 x 150mm, 22 thread (10 pack)	ATS10186	Stir bars 25 x 14 ELI, Rare Earth (6 pack)
ATS10079	Phase separation head, 22svl (2 pack)	OSD656	Block cartridge 6 x 56, 230V
ATS10080	Mini condenser, 22svl (2 pack)	ATS10095	Condenser Rotavis (1 off)
ATS10081	Filtration adaptor/tap, 9.5 dia (2 pack)	ATS10112	Cooling plug OM 6 x 56mm
ATS10082	Rotary Evaporator Adaptor, Plain A24-22mm,(2 pack)	ATS10145	50ml Round Bottom flask, 40OD, Baf, R45, (2 pack)
ATS10083	Rotary Evaporator, HiBoil, A24-22mm (2 pack)	ATS10148	50ml Round Bottom flask, 40OD, Crys, R45, (2 pack)
ATS10084	Rotary Evaporator, Plain, B34-22,(2 pack)	ATS10146	100ml Round Bottom flask, 56OD, Baf, R45, (2 pack)
ATS10085	Rotary Evaporator Adaptor, HiBoil B34-22 (2 pack)	ATS10149	100ml Round Bottom flask, 56OD, Cry, R45, (2 pack)
ATS10086	Rotary Evaporator Adaptor, Filtr B34-22 (2 pack)	ATS10147	250ml Round Bottom flask, 56OD, Baf, R45, (2 pack)
ATS10087	Rotary Evaporator Adaptor Plain B29-22 (2 pack)	ATS10150	250ml Round Bottom flask, 56OD, Cry, R45, (2 pack)
ATS10088	Rotary Evaporator Adaptor, HiBoil B29-22, (2 pack)	ATS10157	Rotary evaporator, Plain, A24 Rodaviss 45, (2 pack)
ATS10089	Rotary Evaporator Adaptor, Filter B29-22, (2 pack)	ATS10158	Rotary evaporator, HiBoil, A24 Rodaviss 45, (2 pack)
ATS10090	Rotary Evaporator Adaptor, Filter, A24-22mm, (2 pack)	ATS10159	Rotary evaporator, Filterd, A24 Rodaviss 45, (2 pack)
ATS10114	Cooling Plug	ATS10160	Plain B34 to Rotavis 45 rotary evaporator (2 pack)
ATS10118	Cap Pressure Reaction 24/25OD	ATS10161	Plain B29 to Rotavis 45 rotary evaporator (2 pack)
ATS10119	Pressurised Vessel 24mm (1 pack)	ATS10162	Rotary evaporator B34 hiboil Rod45 (2 pack)
ATS10134	RV small 24mm crystal (10 pack)	ATS10163	Rotary evaporator B29 HiBoil Rod45 (2 pack)
ATS10135	RV large 24mm crystal (10 pack)	ATS10164	Rotary evaporator Filtered Plain B34 to Rodaviss 45
ATS10137	Stir-Bar, D-Cross,13x17D, Rare Earth, 20P	ATS10165	Rotary evaporator Filtered Plain B29 to Rodiviss 45
		ATS10169	Nitrogen bubbler (2 pack)
		ATS10170	Dropping funnel, cranked, 50ml

*Add X1 suffix for 115V model and X6 for 230V with EU plug

Accessories

For RS Series Reaction Stations

Part Code	Accessory	Part Code	Accessory
AT60067	Stir bar PTFE coated 15mm x 4mm	PS80011A	Adaptor sleeve 25mm to 20mm (10 pack)
ATS10101	Adaptor sleeve 11mm - 25mm (10 pack)	PS80012	Adaptor sleeve 24mm to 16mm (10 pack)
ATS10210	Adaptor sleeve 12mm - 25mm (10 pack)	PS80012A	Adaptor sleeve 25mm to 16mm tubes (10 pack)
ATS10211	Adaptor Sleeve 25mm - 23mm (10 pack)	PS80013	Adaptor sleeve 24mm to 20mm tubes (10 pack)
ATS10212	Adaptor Sleeve 25mm - 18/16mm (10 pack)	PS80013A	Adaptor sleeve 25mm to 20mm tubes (25 pack)
PS80087	Temperature probe	PS80014	Adaptor sleeve 24mm to 16mm tubes (25 pack)
PS80155	Adaptor sleeve RS900 25-22mm (10 pack)	PS80014A	Adaptor sleeve 25 to 16mm (25 pack)
AZ6745	Power cable without plug	PS80015A	Adaptor sleeve 25 to 18mm (10 pack)
AZ6746	115V Power cable with US plug	PS80016	Adaptor sleeve 24 to 20mm tubes
AZ6747	230V Power cable with EU plug	PS80016A	Adaptor sleeve 25 to 20mm tubes
AZS4024	Fuse 8A SLO BLO	PS80017	Adaptor sleeve 24 to 16mm tubes
AZS4010	Motor	PS80017A	Adaptor sleeve 25 to 16mm TU tubes BES
AZS4100	PCB Display	PS80018	Adaptor sleeve Liquid reflux 24-25mm tubes
AZS4101	PCB Microprocessor	PS80041	Adaptor sleeve 56mm to 47mm bottles (6 pack)
AZS4186	RS1000 front fascia label	PS80081	Adaptor sleeve 25mm to 24mm tubes (10 pack)
AZS4189	RS1000 115V power PCB assy	PS80156	Adaptor sleeve 25mm to 17mm (50 pack)
AZS4310	Adaptor sleeve 25-24 dia (25 pack)	PS80126	Adaptor sleeve 25mm to 20mm reflux unit (50 pack)
ATS10031	Stir bar retriever	PS80131	Adaptor sleeve 57.5mm to 25mm (6 pack)
ATS10019	Inerting cap without valve (6 pack)	PS80133	Adaptor sleeve 57.5mm to 45mm (6 pack)
ATS10020	Inerting cap assembly – (6 pack)	PS80134	Adaptor sleeve 57.5mm to 35mm (6 pack)
ATS10025	Temp probe inerting caps (6 pack)	PS80142	Adaptor sleeve 57.5mm to 50.5mm (6 pack)
ATS10026	Spare plug for ATS10025 (6 pack)	ATS10353	Reflux unit (liquid cooled) 6 x 50.5mm tubes
ATS10028	Large elliptical mag bar (20 pack)	PS80024	Reflux unit (liquid cooled) 10 x 24mm tubes
ATS10029	Large octagonal mag bar (20 pack)	PS80024A	Reflux unit (liquid cooled) 10 x 25mm tubes
ATS10030	Cross shape mag bar Medium (20 pack)	PS80026	Reflux unit (liquid cooled) 25 x 24mm tubes
ATS10033	Octagonal stir bar small (40 pack)	PS80026A	Reflux unit (liquid cooled) 25 x 25mm tubes
ATS10034	Cross stir bar – small (40 pack)	PS80027	Reflux unit (liquid cooled) 50 x 24mm tubes
ATS10035	Elliptical stir bar – small (40 pack)	PS80027A	Reflux unit (liquid cooled) 50 x 25mm tubes
PS80088	Reaction pot	PS83000*	RS9000 Agitator Reaction Station
PS80013	PTFE caps sili septa to fit 80112 (100 pack)	AZS4141	Heater Cartridge (110V)
PS80134	Adaptor sleeve 57.5 to 35mm (6 pack)	AZS4142	Heater Cartridge (230V)
PS80142	Adaptor sleeve 57.5 to 50.5mm (6 pack)	M7876	Motor Brushes. (2 per)
AZS4192	RS600 Motor	PS80052	Reaction Block for test tubes, 96 x 16mm OD
AZ4194	RS600 M2 PT100 PCB	PS80064	Reaction Block for test tubes, 40 x 24mm OD
AZ4195	RS600 Transformer	PS80074	Reaction Block for 4 x standard Micro-titre plates
ATS10056	Adaptor sleeve 24mm to 16mm (10 pack)	PS80047	Reaction Block for 4 x 96 well PTFE Micro-titre plates
ATS10201	Adaptor sleeve H/Pres RS600 (6 pack)	PS80065	Reactor for Charybdis (holds two blocks) Calypso System
ATS10240	Adaptor sleeve 56-28 (6 pack)	PS80048	96 well PTFE Micro-titre plate, 9 x 8mm ID
ATS10242	Adaptor sleeve 44.0 to 26 dia. (1 off)	PS80114	Reaction Block for 96 x 1.5ml Micro-titre tubes
ATS10381	Adaptor sleeve 56 - 24 (6 pack)	PS80051	96 well PTFE Micro-titre complete with lid
PS80011	Adaptor sleeve 24mm to 20mm tubes (10 pack)	PS80049	96 well PTFE Micro-titre plate lid
		AZ140940	Temperature probe (external)

*Add X1 suffix for 115V model and X6 for 230V with EU plug



Wolflabs

Wolf Laboratories Limited

www.wolflabs.co.uk

Tel: 01759 301142

Fax: 01759 301143

sales@wolflabs.co.uk



Use the above details to contact us if this literature doesn't answer all your questions.

Pricing on any accessories shown can be found by keying the part number into the search box on our website.

The specifications listed in this brochure are subject to change by the manufacturer and therefore cannot be guaranteed to be correct. If there are aspects of the specification that must be guaranteed, please provide these to our sales team so that details can be confirmed.

