

# Glove Boxes

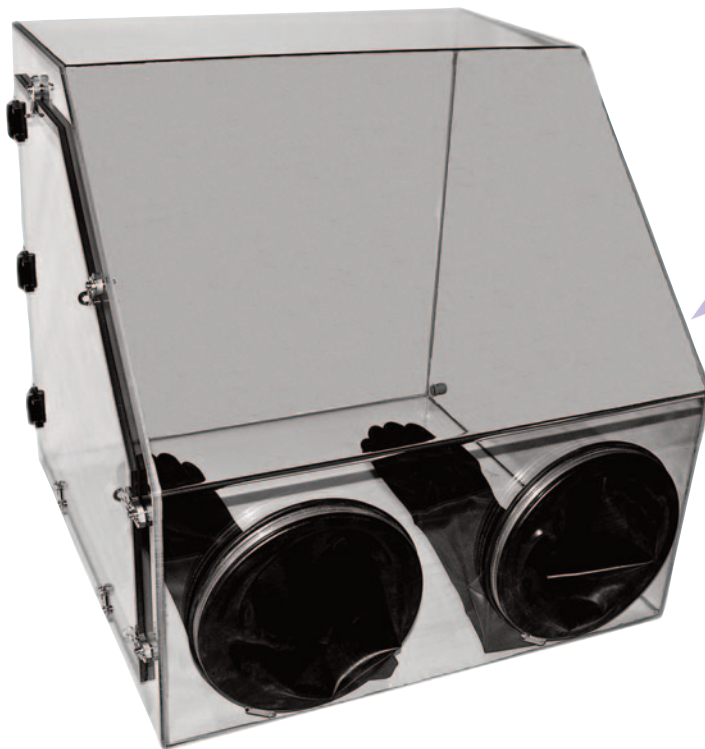
Available in four sizes, these glove boxes are for procedures requiring exclusion of atmospheric oxygen and moisture.

Manufactured in robust non-reactive polycarbonate, Cleaver Scientific Glove Boxes can be used with inert gases such as helium, nitrogen and argon. Including hermetically-sealed gloves, for optimum user manoeuvrability and dexterity when handling equipment, samples and packages, and a side panel as standard, each box provides a safe barrier between the worker and any potential contaminant. Glove Boxes may also be supplied with airlocks, and are customisable in various shapes and sizes to suit different work environments, applications and spaces. Shelving and pipette holder options are also available.

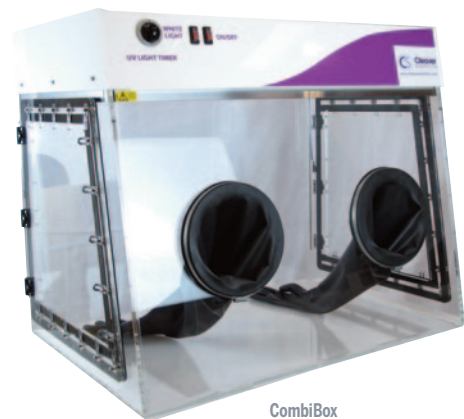
A Combi Box option combines the benefit of UV sterilisation with the fully sealed and enclosed area of a glove box. Four 15W UV-C bulbs with safety interlock switching may be timer controlled for up to 30 minutes, or indefinitely, to decontaminate equipment and the work surface, before and after use. A 15W white light bulb illuminates the entire work surface to provide excellent visibility.

## KEY FEATURES

- Available in 4 sizes, with or without air locks
- Provides a barrier between the user and potential contaminants
- Hermetically sealed gloves allow safe handling within a fully enclosed containment area
- Side panel allows samples and packages to be placed in and removed from the work area safely and easily



**CUSTOM SYSTEMS AVAILABLE: PLEASE CALL**



### ORDERING INFORMATION

<b>CSL-GB24</b>	<b>Glove Box, Standard 2 port, 60 x 60 x 60cm</b>	<b>CSL-GB48</b>	<b>Glove Box, Standard 2 port, 120 x 60 x 60cm</b>
CSL-GB24A	GB24 with Air-Lock	CSL-GB48A	GB48 with Air-Lock
<b>CSL-GB36</b>	<b>Glove Box, standard 2 port, 90 x 60 x 60cm</b>	<b>CSL-GB60</b>	<b>Glove Box, standard 2 port, 150 x 60 x 60cm</b>
CSL-GB36A	GB36 with Air-Lock	CSL-GB60A	GB60 with Air-Lock
<b>CSL-COMBIBOX</b>	<b>Combination Glove Box 24", with 2 ports, 240 VAC</b>	<b>CSL-COMBIBOX-A</b>	<b>Combination Glove Box 24", with 2 ports, 100 VAC</b>



**Wolflabs**

# Wolf Laboratories Limited

[www.wolflabs.co.uk](http://www.wolflabs.co.uk)

Tel: 01759 301142

Fax: 01759 301143

[sales@wolflabs.co.uk](mailto:sales@wolflabs.co.uk)



**Use the above details to contact us if this literature doesn't answer all your questions.**

**Pricing on any accessories shown can be found by keying the part number into the search box on our website.**

The specifications listed in this brochure are subject to change by the manufacturer and therefore cannot be guaranteed to be correct. If there are aspects of the specification that must be guaranteed, please provide these to our sales team so that details can be confirmed.

