

## Protein Markers

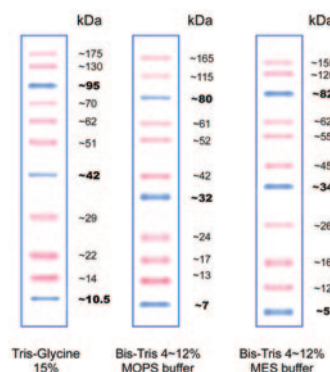
Stable for up to 2 years if stored at -20°C and supplied pre-stained in gel loading buffer for direct loading, Cleaver Scientific PINK Plus and BLUE Wide Range recombinant protein markers are perfect for SDS-PAGE applications.

Sizes range from 10-175kDa for PINK Plus and 10-245kDa for BLUE Wide Range, making both markers suitable for accurate molecular weight determination of most cellular proteins.

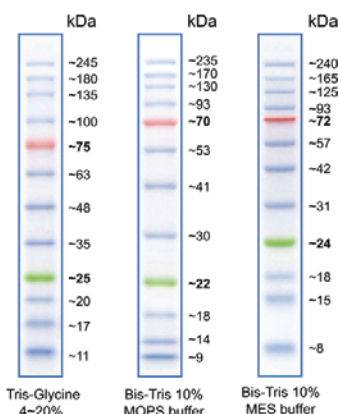
Each marker is covalently bound to a pink or blue colour chromophore to produce a ladder of evenly interspersed bands of uniform intensity. Coloured reference bands serve as visual indicators of electrophoresis run progression and the efficiency of western transfer onto membranes following SDS-PAGE. Both PINK Plus and BLUE Wide Range markers can be detected at volumes as low as 2.5µl per well.

### TECHNICAL SPECIFICATIONS

Cat. No.	CSL-PPL	CSL-BBL
Size Range	10-175kDa	10-245kDa
Number of Bands	11	12
Reference Bands	10, 40 and 90kDa; blue	25 and 75kDa; green & red
Contents	maximum 2.2mg total protein in 15% (v/v) glycerol, 2% SDS	maximum 2.4mg total protein in 15% (v/v) glycerol, 2% SDS
Volume Supplied	500µl	500µl
Storage	3 months at 4°C & 24 months at -20°C	
Loading Volume	2.5-5µl/well	
Number of Applications	100-200	
Source	recombinant proteins, various sources	



PPL Pink Plus



BBL Blue Wide Range

## Blotting membranes

Used in Western blotting, Slot and Dot blotting, Southern and Northern blotting. PVDF with nitrocellulose (proteins) and nylon (RNA and DNA) membranes are available for different application needs and in different formats. Membranes are supplied in sheet form and as a 3m. roll which can be cut to size to fit experimental needs. These membranes are suitable for transfer of proteins and nucleic acids from polyacrylamide and agarose gels. Offered in 0.2µm and 0.45µm.

## Blot absorbent filter paper

This blot-absorbent filter paper is supplied in packs of 50 and in sizes of 10x10cm and 20x20cm. Its 1mm thick texture and high buffer retention properties, being able to absorb twice its own weight in buffer, allow it to exert the gel-membrane compression needed for efficient transfers.

### ORDERING INFORMATION

#### PROTEIN MARKERS

CSL-PPL	Pink Plus Prestained Protein Ladder, 10-175kDa, with 10, 40 & 90kDa reference bands, 1x 500µl vial.	CSL-BBL	Blue Wide Range Prestained Protein Ladder, 10-245kDa, with 25 & 75kDa reference bands, 1x 500µl vial.
---------	---	---------	---

#### BLOTTING MEMBRANES AND ROLLS

CSL-RNC45	Nitrocellulose roll, 0.3x3m (w x l), 0.45µm	CSL-RNY45	Positively charged supported nylon, 0.24x3m (w x l)
CSL-RNC2	Nitrocellulose roll, 0.3x3m (w x l), 0.2µm	CSL-RNY2	Positively charged supported nylon, 0.24x3m (w x l)
PVDF0.2S	25 Pre-cut PVDF 20 x 20 cm 0.2 µm	PVDF0.2R	Roll PVDF 24 cm x 3 m, 0.2µm
PVDF0.45S	25 Pre-cut PVDF 20 x 20 cm 0.45µm	PVDF0.45R	Roll PVDF 24 cm x 3m, 0.45µm

#### BLOT ABSORBENT FILTER PAPER

CSL-BP1010	Blot-Absorbent Filter paper, 10x10cm, pack of 50	CSL-BP2020	Blot-Absorbent Filter paper, 20x20cm, pack of 50
------------	--	------------	--



# WolfLabs

**Pricing on any accessories shown can be found by keying the part number into the search box on our website.**

The specifications listed in this brochure are subject to change by the manufacturer and therefore cannot be guaranteed to be correct. If there are aspects of the specification that must be guaranteed, please provide these to our sales team so that details can be confirmed.

**[www.wolflabs.co.uk](http://www.wolflabs.co.uk)**

**Tel : 01759 301142**

**Fax : 01759 301143**

**[sales@wolflabs.co.uk](mailto:sales@wolflabs.co.uk)**

Please contact us if this literature doesn't answer all your questions.