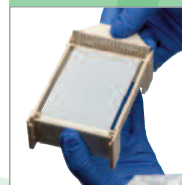


**Cellulose Acetate  
Clinical  
electrophoresis**  
for Qualitative  
Identification and  
Quantification of  
Haemoglobin,  
Lipoprotein, Serum  
proteins and  
Immunofixation  
analysis (IFE)



- COMPACT HIGH RESOLUTION SYSTEM FOR CLINICAL ELECTROPHORESIS
- ACCOMMODATES STRIPS AND GELS UP TO 24x20CM
- COMPLETE RANGE OF CELLULOSE ACETATE GELS AND KITS
- DENSITOMETER SOFTWARE AND SCANNER AVAILABLE



- Qualitative identification and quantification of Hb, Lipoprotein, serum protein and monoclonal antibodies
- Ready kits available that include reagents and accessories required to perform complete tests
- CellasGEL and cellulose acetate dry plates available in different sizes and/or thickness
- Accommodates strips and gels up to 24x20cm
- Dedicated analysis software and scanner

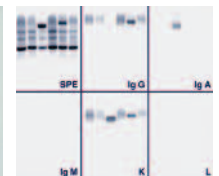
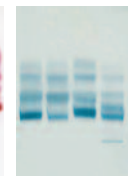
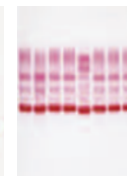
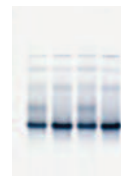
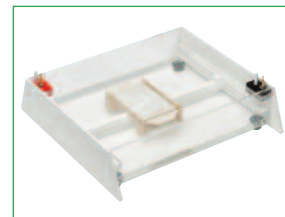
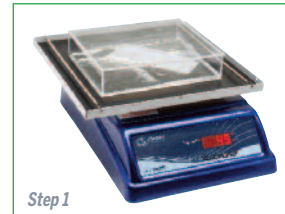
Cellulose acetate electrophoresis is an important technique in clinical diagnostics. The Cleaver Scientific range of cellulose acetate products offers a complete system solution for research and clinical cellulose acetate electrophoresis applications

#### APPLICATIONS INCLUDES:

Detection of haemoglobinopathies such as Sickle cell, Thalassemia; Dysproteinaemia; Hyperlipidaemias, High-density (HDL), Low-density (LDL) and Very-low-density (VLDL) lipoprotein evaluation; Monoclonal Gammopathies etc

For further information and full products' range please visit our website at [www.cleaverscientific.com](http://www.cleaverscientific.com)

## CELLAS



Haemoglobins

Serum proteins

Lipoproteins

IFE

The Cellas electrophoresis unit is the ideal system for standard 'dry' membrane and 'wet' cellulose acetate gels (CellasGEL)

### ORDERING INFORMATION, CELLASGEL APPLICATIONS PACKAGES EQUIPPED WITH BRIDGES, APPLICATOR AND CLINICAL TEST KIT

Code	Description	Packages (Kit and Accessories) required, Code	Diagnostic Application
CSLCELLAS	<b>Horizontal Unit for Cellulose Acetate Electrophoresis</b>		
CSLKITCU	<b>CellasKIT: serum and concentrated urine IFE</b> Kit content, sufficient for 5 patients (10x semi-micro tests): 30 CellasGEL strips & TGS buffer; Coomassie stain, clearing & saline solutions; volumetric distributors & antisera (anti-IgG, IgA, IgM, Ig & Ig); blotting paper & mylar film. Excludes: Destain.	CSLKITCU-ABS Includes: 1x CSLKITCU, 1x CSLAPPS22, 3x CSLBDG8.5S	MGUS, MM
CSLKITI2432	<b>CellasKIT: serum IFE</b> Kit content, sufficient for 24 patients (semi-micro) & 32 (micro): 24 CellasGEL strips & Tris-Hippurate buffer; Amidoblack stain, saline & clearing solutions; volumetric distributors & antisera (anti-IgG, IgA, IgM, Ig & Ig); blotting paper & mylar film. Excludes: Destain	CSLKITI2432-ABS Includes: 1x CSLKITI2432, 1x CSLAPPS6, 6x BCSLDG8.5S CSLKITI2432-ABM Includes: 1x CSLKITI2432, 1x CSLAPP8M, 6x CSLBDG8.5S	MGUS, MM
CSLKITSP100200	<b>CellasKIT: serum proteins</b> Kit content, sufficient for 100x semi-micro or 200x micro tests: 25 CellasGEL strips & Tris-Hippurate buffer; Ponceau S stain, destain & clearing solutions; blotting paper & mylar film	CSLKITSP-ABS Includes: 1x CSLKITSP100200 1x CSLAPPS4, 3x CSLBDG8.5S CSLKITSP-ABM Includes: 1x CSLKITSP100200 1x CSLAPP8M, 3x CSLBDG8.5S	Dysproteinaemia; Albumin, Alpha-1, Alpha-2, Transferrin, C3 & Gamma Globulin Quantitation
CSLKITSP150200	<b>CellasKIT: serum proteins (high resolution)</b> Kit content, sufficient for 150x semi-micro or 200x micro tests: 25 CellasGEL strips & TGS buffer; Coomassie stain, citric acid & clearing solutions; blotting paper & mylar film. Excludes: Destain	CSLKITSPHR-ABS Includes: 1x CSLKITSP150200 1x CSLAPPS4, 3x CSLBDG8.5S CSLKITSPHR-ABM Includes: 1x CSLKITSP150200 1x CSLAPP8M, 3x CSLBDG8.5S	Incipient Gammopathies
CSLKITHG100	<b>CellasKIT: haemoglobin</b> Kit content, sufficient for 100x semi-micro tests: 25 CellasGEL strips & Tris-Glycine buffer; Ponceau S stain, destain & clearing solutions; blotting paper & mylar film.	CSLKITHG100-ABS Includes: 1x CSLKITHG100, 1x CSLAPPS4 3x CSLBDG8.5S	Haemo- globinopathies
CSLKITLP100	<b>CellasKIT: lipoproteins</b> Kit content, sufficient for 100x semi-micro tests: 25 CellasGEL strips & Tris-Hippurate buffer; Sudan Black stain & clearing solution; blotting paper & mylar film	CSLKITLP100-ABS Includes: 1x CSLKITLP100 1x CSLAPPS4 3x CSLBDG8.5S	Hyper-lipidaemias



**Wolflabs**

# Wolf Laboratories Limited

[www.wolflabs.co.uk](http://www.wolflabs.co.uk)

Tel: 01759 301142

Fax: 01759 301143

[sales@wolflabs.co.uk](mailto:sales@wolflabs.co.uk)



**Use the above details to contact us if this literature doesn't answer all your questions.**

**Pricing on any accessories shown can be found by keying the part number into the search box on our website.**

The specifications listed in this brochure are subject to change by the manufacturer and therefore cannot be guaranteed to be correct. If there are aspects of the specification that must be guaranteed, please provide these to our sales team so that details can be confirmed.

