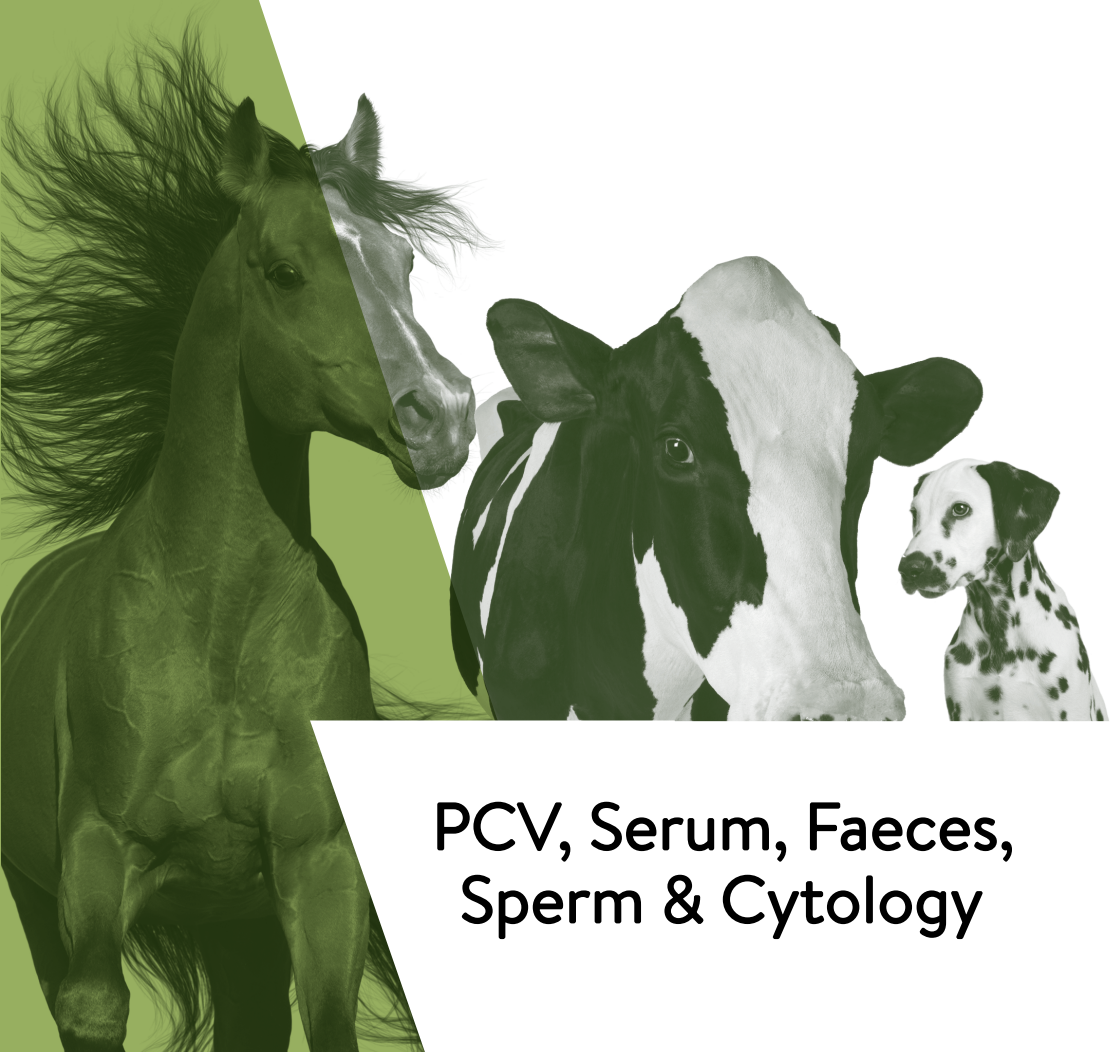


# PrO-VET

a division of

**CENTURION**  
SCIENTIFIC LIMITED



**PCV, Serum, Faeces,  
Sperm & Cytology**

# Welcome

## to our PrO-VET Centrifuge range

Simple and safe to use.

Our centrifuges offer ease of use.

LID Models offer 4 pre written programs

- All the 4 programs have been pre-set for ease of use
  - Press Function and select 1 of 4 parameters
  - Load your samples, shut the lid and press Start
  - Easy and reliable
- LED models are also available for more complex requirements allowing full user programming
  - Multiple features
  - Long Lifetime for confidence of purchase
  - Run finish buzzer. (Can be turned off)
  - Full safety features for safe and confident use
  - Space saving and quiet
  - Equine & Bovine models require a rotor (not inclusive) A numerous choice is available
  - Models available From our Micro Haematocrit to Large animal types See the index on the opposite page

Centurion Scientific Ltd Centrifuges comply to all relevant EU standards of quality and medical devices IEC61010 and CE conformity test marks emission, immunity to EN/IEC 61326-1, Class B

# Contents

## Small animals

PrO-Vet HE	Haematocrit centrifuge	24 x Capillary & 12 x 2ml	4
PrO-Vet SO	Swing out centrifuge	8 x 5ml	5
PrO-Vet PCV.h	Dual. Haematocrit & swing out centrifuge	24 x Capillary 12 x 2ml Swing out 8 x 5ml	6-7

## Medium size animals

PrO-Vet Serum.FA4	Fixed angle rotor centrifuge	4 x 50ml	8
PrO-Vet Serum.FA8	Fixed angle rotor centrifuge	4 x 10ml & 4 x 15ml	9
PrO-Vet Serum.s	Dual. Fixed angle rotor centrifuge	4 x 10ml & 4 x 15ml 4 x 50ml	10-11
PrO-Vet PCV.s	Dual. Haematocrit & Fixed angle centrifuge	24 x Capillary & 12 x 2ml 8 x 15ml	12-13

## Medium to Large Bovine

PrO-Vet.Multi		24 x Capillary 12 x 2ml Swing out 4 x 100ml	14-17
---------------	--	--	-------

## Large Equine

PrO-Vet.Equine.SO	Swing out rotor centrifuge	8 x 10ml	18
PrO-Vet.CYTO	Cytology centrifuge	4 x dual holders	19
PrO-Vet.Equine	Multiple roto centrifuge	Range of rotors	20-27
PrO-Vet.Bovine			

Type of analysis	Page	Type of analysis	Page
Haematocrit / 2ml Serum	4, 6, 12, 14, 20	Sperm	8, 10, 14, 18, 20
Serum. Horizontal. Swing out rotor	5, 6, 14, 18, 20	Faeces	10, 14, 20
Serum. Angular. Fixed angle	8, 9, 10, 12, 20	Cytology/Histology	19, 20
Urine All rotors (not cytology)			

# Micro Centrifuge

## Supplied with Haematocrit rotor



### HE Ambient Centrifuge

Programs	Speed	Time
1. PCV	13,000Rpm	300 secs
2. Serum 1	6,000Rpm	600 secs
3. Serum 2	5,000Rpm	300 secs
4. Urine	2,500Rpm	300 secs
<b>HWD</b>	280x240x360mm	
<b>Weight</b>	12.8 Kg	
<b>Power</b>	125 Watts	

Display indicative only

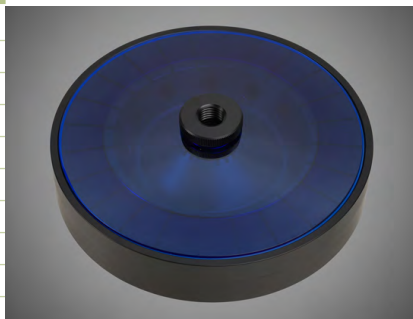
#### PART NUMBERS. (230V 50/60HZ)

PrO-VET.HE. With BRK5401 rotor

#### PART NUMBERS. (110V 60HZ)

1.PrO-VET.HE. With BRK5401 rotor

Rotor	BRK5401
Rotor type	24 x capillary & 12x2ml
Tube size max	2 x 75mm & 11 x 40mm
Minimum Rcf (G)	10
Maximum speed Rpm	13,000
Maximum Rcf (G)	15,800
Radius max cms Sample	8.4
Tube angle °	0 & 60
Acceleration time (secs)	25
Deceleration time (secs)	25
Autoclavable (frequency)	121°C (10)





**Wolflabs**

# Wolf Laboratories Limited

[www.wolflabs.co.uk](http://www.wolflabs.co.uk)

Tel: 01759 301142

Fax: 01759 301143

[sales@wolflabs.co.uk](mailto:sales@wolflabs.co.uk)



**Use the above details to contact us if this literature doesn't answer all your questions.**

**Pricing on any accessories shown can be found by keying the part number into the search box on our website.**

The specifications listed in this brochure are subject to change by the manufacturer and therefore cannot be guaranteed to be correct. If there are aspects of the specification that must be guaranteed, please provide these to our sales team so that details can be confirmed.

