

# CAPP Rondo

## PLATFORM SHAKER

**CAPP Rondo Platform Shaker** offers a shaking mass capacity of 7.5kg. Its orbital motion, along with the motor technology ensures thorough mixing and a long-life, maintenance-free operation, making it ideal for extended runs.

The speed settings range from 50 to 300 RPM and the time can be set up from 1 to 99 hours and 59 minutes.

**CAPP Rondo Platform Shaker** has multiple programmable modes, such as motion direction, speed, time, dwell time, sequence and loop operation. The user can program up to six individual protocols, each one with additional nine sub-protocols.

Thanks to the multiple attachments, **CAPP Rondo Platform Shaker** is universally compatible with almost all commonly used vessels.

In case of a power failure, the option of *Auto Power On* will ensure the operation runs for the remaining time after resumption.

### Specifications:

Shaking Movement	Orbital (Ø20mm) / Linear
Max. Loading Capacity	7.5kg
Speed Range	50-300 RPM
Motor Type	Brushless DC motor
Time Settings	0 to 99 hours and 59 minutes
Dimensions (WxDxH)	408x350x99mm
Platform Size	330x330mm
Protection Class	IP 21
Programmable Features	Up to 6 individual protocols, each with additional 9 sub-programs
Programmable Looping	YES
RS 232 Interface	Optional

## Ordering Information

Cat No.	Description
CRP-3X	CAPPRondo Platform Shaker ø 20mm, with linear and orbital motion, 7.5kg capacity
CRP-U	Universal Platform with Adjustable Bars (Flask capacity 9 x 250mL, 6 x 500mL)
CRP-D	Disk Attachment Base Plate with Slip Resistance Tray
CRP-C9-250	Base Plate with 9 Plastic Clamps: 9 x 250mL
CRP-C9-500	Base Plate with 9 Plastic Clamps: 9 x 500mL
CRP-F	Funnel Attachment
CRP-CS9-250	Base Plate with 9 Stainless Steel Clamps: 9 x 250mL
CRP-CS9-500	Base Plate with 9 Stainless Steel Clamps: 9 x 500mL
CRP-CS-100	Stainless Steel Clamp for 100mL Flask
CRP-CS-150	Stainless Steel Clamp for 150mL Flask
CRP-CS-250	Stainless Steel Clamp for 250mL Flask
CRP-CS-500	Stainless Steel Clamp for 500mL Flask
CRP-CS-1000	Stainless Steel Clamp for 1000mL Flask



CRP-U



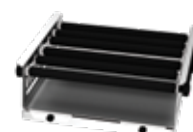
CRP-D



CRP-C9-250



CRP-C9-500



CRP-F



CRP-CS9-250



CRP-CS9-500



CRP-CS-250





**Wolflabs**

# Wolf Laboratories Limited

[www.wolflabs.co.uk](http://www.wolflabs.co.uk)

Tel: 01759 301142

Fax: 01759 301143

[sales@wolflabs.co.uk](mailto:sales@wolflabs.co.uk)



**Use the above details to contact us if this literature doesn't answer all your questions.**

**Pricing on any accessories shown can be found by keying the part number into the search box on our website.**

The specifications listed in this brochure are subject to change by the manufacturer and therefore cannot be guaranteed to be correct. If there are aspects of the specification that must be guaranteed, please provide these to our sales team so that details can be confirmed.

