

# CATALOGUE



---

**Hot Water  
Systems**

---

**Spas**

---

**Drinking Water**

---



**Your solution facing the  
Legionella risk**

Year: 2020

# SUMMARY



p.3

Reminders about legionella and  
**C4Hydro** solutions



p.4

Which solution do I need?



p. 5 to 9

List of equipment and consumables



p.10

Training



p.11

Order form

# REMINDERS ABOUT LEGIONELLA AND C4HYDRO SOLUTIONS

## ➡ Legionnaire's disease:

Disease of bacterial origin, **fatal in 10 to 50% of cases.**

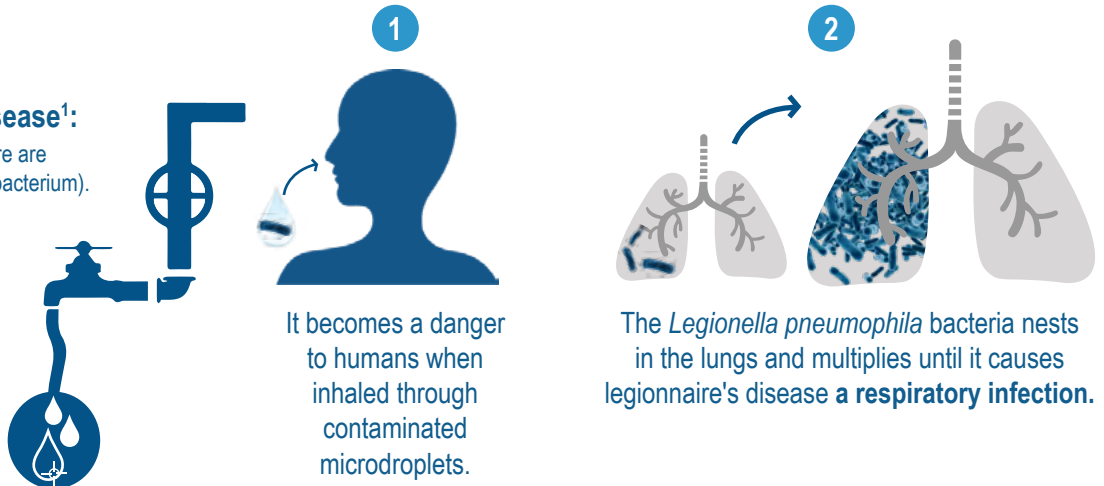
### Bacteria causing the disease<sup>1</sup>:

*Legionella pneumophila* (there are 16 serogroups of this pathogenic bacterium).

<sup>1</sup>In more than 98% of cases

### ITS HABITAT:

It develops in all water networks **between 25 and 45 degrees Celsius.**



## PREVENT THE RISK BY CHECKING YOUR NETWORKS!

### C4HYDRO SOLUTIONS

Based on the same technique as the regulatory method\*, our innovative technology, patented by the CNRS, will allow you to **detect the pathogenic bacterium that causes the disease: *Legionella pneumophila* cultivable from all serogroups**  
Using our equipment is **simple, fast and reliable;**

## ➡ 3 STAGES:

**1** 10min  
**PREPARATION**  
Cultivation on selective GPC agar culture of the test sample.

**2** 47hrs  
**INCUBATION**  
Assimilation of the modified sugar exclusively by *Legionella pneumophila*  
(Waiting time)

**3** 50min  
**REVELATION**  
Revealing the assimilated modified sugar using colorimetry.  
(Result)

**I DETERMINE MY THRESHOLD BASED ON THE FILTERED SAMPLE VOLUME!**

\*Regulatory method: reference method NF T90-431, result process in 10-14 days. Legionella concentration analyses carried out in laboratories accredited by COFRAC (Comité Français d'Accréditation).

➡  **OVERALL PROCESS: 48hrs**  
(1hr OF PROCESS + 47hrs OF INCUBATION) ⬅

Products using technology by





# WHICH SOLUTION DO I NEED?

## III ➡ I DON'T HAVE ANY SPECIFIC EQUIPMENT AND I NEED TO CARRY OUT:

### 1 to 2 analysis per week

I use the **Uni-Test** mobile lab with the **Legio EZ-Test** consumables kit



+



Ref.: 00 376

(page 5)

Ref.: 00 187

(page 6)

### More than 2 analysis per week

I use the **Multi-Test** mobile lab with the **Legio EZ-Test** consumables kit



+



Ref.: 00 365

(page 5)

Ref.: 00 187

(page 6)

## III ➡ I HAVE LABORATORY EQUIPMENT (glassware, scales, ovens, cold room, etc.) AND I NEED TO CARRY OUT:

### 1 analysis per week

I use the **Legio EZ-Test** kit with the filtration station and my equipment<sup>1</sup>



+



Ref.: 00 129

(page 8)

Ref.: 00 187

(page 6)

### More than 1 analysis per week

I use the **Legio EZ-Lab** kits with the filtration station and my equipment<sup>1</sup>



+



Ref.: 00 129

(page 8)

Ref.: 01 723

(page 7)

<sup>1</sup> It is possible to equip or replace missing equipment, see [page 8](#).





# LIST OF EQUIPMENT AND CONSUMABLES

## III ➔ I DON'T HAVE ANY SPECIFIC EQUIPMENT:

### a) Mobile laboratories:



Designation	Reference
Uni-Test	00 376

Mobile laboratory designed to detect *Legionella pneumophila* in 48 hours.  
**1 analysis at a time.**

For use with the **Legio EZ-Test kit** (Ref.: 00 187)

All-in-one laboratory:

- Membrane support with magnetized funnel
- Vacuum pump with suction tube
- Bottle for filtration
- Incubator
- Timer
- Colorimeter
- Syringe 10 mL



Designation	Reference
Multi-Test	00 365

Mobile laboratory designed to detect *Legionella pneumophila* in 48 hours.  
**Up to 6 tests at a time.**

For use with the **Legio EZ-Test kit** (Ref.: 00 187)

All-in-one laboratory:

- 6 holes for filtration each equipped with a cap, a membrane support and a magnetized funnel
- Integrated filtration system with antibacterial filter and pressure gauge
- 1000 mL filtrate tank
- Integrated incubator for 6 petri dishes with temperature recorder
- Timer
- Colorimeter
- Syringe 10 mL
- 5 meter power cable
- Power supply 110-240V 50/60Hz
- Trolley with wheels that can easily be unfolded by simply pressing the lock
- Ball bearing casters
- Easy opening latches
- Padlock lugs suitable for air transport

Mobile laboratory that can be rented on a quarterly basis.

For more information, please contact us (contact details on [page 10](#)).



# LIST OF EQUIPMENT AND CONSUMABLES

## III ➔ I DON'T HAVE ANY SPECIFIC EQUIPMENT:

### b) The Consumables Kit:



Designation	Reference
Legio EZ-Test Kit	00 187

Set of reagents required for detection of *Legionella pneumophila* using one of the above mobile labs. Suitable for hot water systems: Spas, drinking water, etc. Features: 1 kit = 1 analysis, Use-by-date: 3 months, to be stored at 4°C.

For use with the mobile laboratory **Uni-Test** (Ref.: 00 376) or **Multi-Test** (Ref.: 00 365)

Volume discount can be applied. Please contact us.



## I HAVE LABORATORY EQUIPMENT:

(glassware, scales, ovens, pH meter, colorimeter, etc.) \*

Designation	Reference
Legio EZ-Lab Kit	01 723
96 specific GVPC petri dishes	00 167



Set of reagents required for detection of *Legionella pneumophila* in 48 hours. **Allows 96 analyses to be performed.**

### CONTENTS OF THE KIT:

- 96 "3" single-dose vials
- 10 small "S" glass vials
- 96 "6" single-dose vials
- 1 opaque bottle of Solution "7" containing 530 ml
- 10 x 100 ml "Concentrated Wash" bottles
- 96 disposable filtration units in sterile bags containing a filtration membrane
- 96 collecting tubes with plugs

### SPECIFIC PETRI DISHES TO BE USED WITH THE KIT:

- 96 GVPC petri dishes (Ref.: 00 167) Staggered delivery of boxes possible (use-by-date 3 months)

## For use with the C4Hydro filtration manifold:



Designation	Reference
C4Hydro manifold	00 129

### LARGE EQUIPMENT

(Laboratory equipment not supplied with the EZ-Lab Kit but necessary)

- Oven or temperature controlled chamber
- Sterilisation equipment
- Filtration pump with a flow rate between 4 and 10 l/min (or 0.24 to 0.6 m<sup>3</sup>/h) & vacuum between 0.4 and 0.8 bars (or vacuum between 200 and 400 mbar)
- Incubator 52°C ± 0.5°C
- pH meter

### SMALL EQUIPMENT

(Not supplied with the EZ-Lab kit but necessary and available on pages 7 and 8)

- C4Hydro Colorimeter (Ref.: 00 414) or colorimeter (range 340 – 900 nm)
- Macro spectrometry cuvette with cap: C4Hydro cuvette (Ref.: 00 314) or single-use macro cuvette (4-sided transparent, PS material, range 340 – 900 nm)
- Timer (Ref.: 00 113)

### CONSUMABLES

(Not supplied with the EZ-Lab kit but necessary)

- Loading solution pH2
- Loading solution pH1
- Sterile purified H<sub>2</sub>O
- Ethanol 85%
- Pipettes in different volumes
- Sterile sowing rake
- Sterile tongs

## III ➔ I COMPLETE AND RENEW MY EQUIPMENT:



Designation	Reference
C4Hydro filtration manifold	00 129

Option to filter **up to 6 samples** at the same time.

Option for series connection of the ramps in order to increase the number of your analysis.

For use with **the EZ-lab legio kit** (Ref.: 01 723) and a vacuum pump with the following features: Flow between 4 and 10 l/min (or 0.24 to 0.6 m<sup>3</sup>/h) & vacuum between 0.4 and 0.8 bars (or vacuum between 200 and 400 mbar)



Designation	Reference
Colorimeter	00 414

Reads the absorbency of the sample.

Requires 4 AA batteries (included).

For use with **the EZ-lab legio kit** (Ref.: 01 723) and standard 4.5 ml plastic cuvettes.



Designation	Reference
Temperature recorder	00 404

Allows you to monitor the temperature during incubation. Downloading of temperature curves via Bluetooth application. For use with incubator or oven.



Designation	Reference
Timer	00 113

Simple and resistant. Supplied with a battery.





Designation	Reference
Plastic sampling bottle. 500ml	00 384

Used to collect the sample in a sterile, stabilized vial. Contains 20mg of sodium thiosulfate.



Designation	Reference
Anti-bacterial filter 45µm	00 088

Essential to avoid contamination.

**Volume discount can be applied. Please contact us.**



# WolfLabs

**Pricing on any accessories shown can be found by keying the part number into the search box on our website.**

The specifications listed in this brochure are subject to change by the manufacturer and therefore cannot be guaranteed to be correct. If there are aspects of the specification that must be guaranteed, please provide these to our sales team so that details can be confirmed.

**[www.wolflabs.co.uk](http://www.wolflabs.co.uk)**

**Tel : 01759 301142**

**Fax : 01759 301143**

**[sales@wolflabs.co.uk](mailto:sales@wolflabs.co.uk)**

Please contact us if this literature doesn't answer all your questions.