



UB-S-90 ◀ 059 cm ▶



#### Safety storage underbench cabinet

##### UB-S-90 model UB90.060.059.S

in Light grey (RAL 7035), interior equipment with 1 x drawer (sheet steel powder-coated), 1 x perforated insert (stainless steel)

Order No. 30472-001-30474 4



#### Safe and approved storage of flammable hazardous substances in working areas

##### Function / construction:

- **robust construction and longevity:** body made of powder-coated sheet steel
- **user-friendly:** drawer remains open in any position, interior of drawer completely visible – access to all containers
- **safe:** drawer fitted with earthing wire incl. clamp as standard, seal welded sump, drawers are self-closing in the event of fire
- **no unauthorised use:** drawer lockable with cylinder lock and locking state indicator (red/green)
- **mobile:** castors with plinth (optionally available), easy moving of the cabinet
- **ventilation:** integrated air ducts ready for connection (DN 50) to a technical exhaust system

##### Available equipment

- perforated insert useable as storage area
- plenty of space for small containers, optimal utilisation of the inside space when storing small containers

#### Second level drawer

Plenty of space for small containers, optimal utilisation of the inside space when storing small containers



#### Recirculating air filter system

Avoid complex wall breakthroughs and expensive extraction piping.

Especially designed for the lower pressure conditions and volume flows of underbench cabinets.

Further information from page 395

Order No. 27144 2

(housing unit optional)



#### Technical data

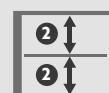
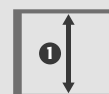
		UB90.060.059.S	UB90.060.059.050.S
External dimensions W x D x H	mm	593 x 574 x 600	593 x 502 x 600
Internal dimensions W x D x H	mm	470 x 452 x 502	470 x 382 x 502
Weight without interior equip.	kg	120	110
Extraction air	DN	50	50
Air change 10 times	m³/h	1	1
Diff. pressure (air change 10 times)	Pa	1	1
Diff. pressure (air change 10 times EK5/AK4)	Pa	1	1
Maximum load	kg	300	300
Distributed load	kg/m²	450.00	460.00

#### Usable storage heights

UB90.060.059(.050).S  
1 mm 460\*\*

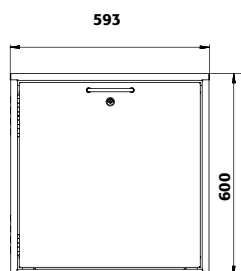
UB90.060.059.S  
2 mm 230\*\*\*

\*\* without perforated insert  
\*\*\* with second level drawer



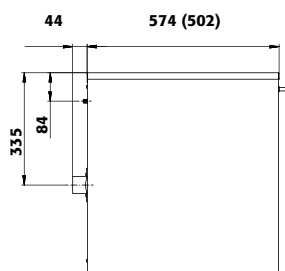


Front view

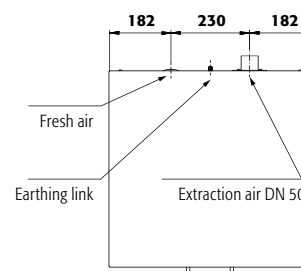


Side view

UB90.060.059.S



Top view



UB-LINE

## Order example - how to order correctly



30473



001



30475



## Model

UB90.060.059.S	without interior equipment, with drawer
UB90.060.059.050.S	without interior equipment, with drawer



2)

11.5
10

## Order No.

30472
30473



## Body colour

Light grey RAL 7035

## Door colour

Light grey RAL 7035

## Order No.

001 4



## Interior equipment packages (can only be ordered in combination with the cabinet)

Depth 574 (mm)	Material	Order No.
1x drawer (V=11.0L), 1x perforated insert	sheet steel powder-coated, stainless steel	30474 2)
1x drawer (V=11.0L), 1x perforated insert, 1x second level drawer (V=3.0L)	sheet steel powder-coated, stainless steel, sheet steel powder-coated RAL 7035	30475 2)

Interior equipment  
Depth 574 mm

	Material	W x D x H (mm)	1)	2)	3)	Order No.
perforated insert	stainless steel	420 x 439 x 9	75.00			9975 2)
second level drawer	sheet steel powder-coated RAL 7035	442 x 418 x 45*	25.00	3.00	2.73	30476 2)
second level drawer	stainless steel	430 x 418 x 45*	25.00	3.50	3.18	30477 2)
sump inliner, for second level drawer (1 pc, recom. 2 pcs)	PP white	420 x 199 x 20*				10905 2)
sump inliner	PP grey	353 x 406 x 88*				9706 2)
anti-slip rubber mat	black	420 x 438 x 1				8698 2)
drawer, additional charge for sump made of stainless steel	stainless steel	425 x 444 x 80				30733 2)

Interior equipment  
Depth 502 mm

	Material	W x D x H (mm)	1)	2)	3)	Order No.
perforated insert, for cabinet/compartment width 59 cm	stainless steel	417 x 364 x 9	75.00			18922 2)

Interior equipment  
All models

	Material	W x D x H (mm)	Order No.
pipe lead-through	sheet steel powder-coated RAL 7035	182 x 104 x 48	30035 2)
bottle rack, for 8 bottles with Ø 90 mm	sheet steel powder-coated RAL 7035	220 x 440 x 30	7604 2)
bottle rack, for 15 bottles with Ø 70 mm	sheet steel powder-coated RAL 7035	220 x 440 x 30	7603 2)
bottle rack, for 32 bottles with Ø 40 mm	sheet steel powder-coated RAL 7035	220 x 440 x 30	7602 2)
castors with plinth, height = 30 mm	sheet steel powder-coated RAL 7035		30478 2)



## Accessories

	Order No.
extraction module with exhaust air monitoring for wall mounting, for underbench cabinets	24315 2)
recirculating air filter system with exhaust air monitoring, for underbench cabinets	27144 2)
adaptor, as separate housing unit for lateral mounting	26885 2)

\* usable storage space W x D (mm)

1) load capacity (kg), 2) retention capacity (ltr), 3) maximum container volume in the cabinet (ltr)



UB-S-90 ◀ 059 cm ▶



## Safe and approved storage of flammable hazardous substances in working areas

### Function / construction:

- **robust construction and longevity:** body made of powder-coated sheet steel
- **user-friendly:** drawer remains open in any position, interior of drawer completely visible – access to all containers
- **safe:** drawer fitted with earthing wire incl. clamp as standard, seal welded sump, drawers are self-closing in the event of fire
- **no unauthorised use:** drawer lockable with cylinder lock and locking state indicator (red/green)
- **mobile:** castors with plinth (optionally available), easy moving of the cabinet
- **ventilation:** integrated air ducts ready for connection (DN 50) to a technical exhaust system

### Available equipment

- perforated insert useable as storage area
- plenty of space for small containers, optimal utilisation of the inside space when storing small containers

### Safety storage underbench cabinet

#### UB-S-90 model UB90.080.059.060.S

in Light grey (RAL 7035), interior equipment with 1 x drawer (sheet steel powder-coated), 1 x perforated insert (stainless steel)

Order No. 32658-001-30474



### Special height of 800 mm

Optimal utilisation of the inside space – it's possible to store 2.5 litre bottles on two levels.



### Extraction module for wall mounting

Especially designed for the lower pressure conditions and volume flows of under-bench cabinets.

Further information and products from page 397

Order No. 24315



### Technical data

#### UB90.080.059.060.S

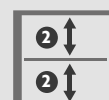
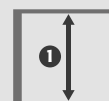
External dimensions W x D x H	mm	593 x 600 x 800
Internal dimensions W x D x H	mm	470 x 482 x 702
Weight without interior equip.	kg	143
Extraction air	DN	50
Air change <b>10 times</b>	m³/h	2
Diff. pressure (air change <b>10 times</b> )	Pa	1
Diff. pressure (air change <b>10 times EK5/AK4</b> )	Pa	1
Maximum load	kg	300
Distributed load	kg/m²	467.00

### Usable storage heights

#### UB90.080.059.060.S

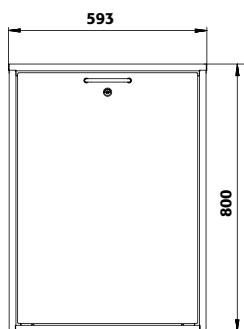
①	mm	665**
②	mm	330***

\*\* without perforated insert  
\*\*\* with second level drawer

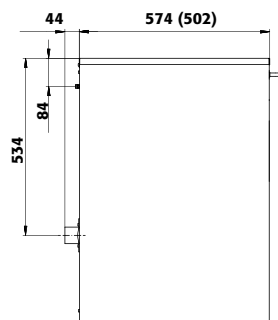




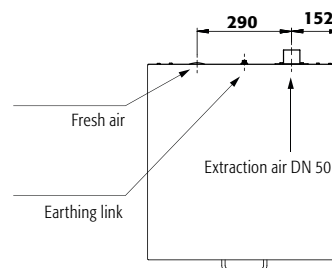
Front view



Side view



Top view



## Order example - how to order correctly



32658



001



30475



## Model

UB90.080.059.060.S

## Information / equipment

without interior equipment, with drawer



21.5

2)

## Order No.

32658



## Body colour

Light grey RAL 7035

## Door colour

Light grey RAL 7035

## Order No.

001 6



## Interior equipment packages (can only be ordered in combination with the cabinet)

1x drawer (V=11.0L), 1x perforated insert

1x drawer (V=11.0L), 1x perforated insert, 1x second level drawer (V=3.0L)

## Material

sheet steel powder-coated, stainless steel

sheet steel powder-coated, stainless steel, sheet steel powder-coated RAL 7035

## Order No.

30474 2

30475 2



## Interior equipment

## Material

## W x D x H (mm)



1)



2)



3)

## Order No.

perforated insert

stainless steel

420 x 439 x 9

75.00

9975 2

second level drawer

sheet steel powder-coated RAL 7035

442 x 418 x 45\*

25.00

3.00

2.73

30476 2

second level drawer

stainless steel

430 x 418 x 45\*

25.00

3.50

3.18

30477 2

sump inliner, for second level drawer (1 pc, recom. 2 pcs)

PP white

420 x 199 x 20\*

10905

10905 2

sump inliner

PP grey

353 x 406 x 88\*

9706

9706 2

anti-slip rubber mat

black

420 x 438 x 1

8698

8698 2

pipe lead-through

sheet steel powder-coated RAL 7035

182 x 104 x 48

30035

30035 2

bottle rack, for 8 bottles with Ø 90 mm

sheet steel powder-coated RAL 7035

220 x 440 x 30

7604

7604 2

bottle rack, for 15 bottles with Ø 70 mm

sheet steel powder-coated RAL 7035

220 x 440 x 30

7603

7603 2

bottle rack, for 32 bottles with Ø 40 mm

sheet steel powder-coated RAL 7035

220 x 440 x 30

7602

7602 2

castors with plinth, height = 30 mm

sheet steel powder-coated RAL 7035

30478

30478 2

document holder, DIN A5

polystyrene

30793

30793 2



## Accessories

extraction module with exhaust air monitoring for wall mounting, for underbench cabinets

## Order No.

24315 2

\* usable storage space W x D (mm)

1) load capacity (kg), 2) retention capacity (ltr), 3) maximum container volume in the cabinet (ltr)



**Wolflabs**

# Wolf Laboratories Limited

[www.wolflabs.co.uk](http://www.wolflabs.co.uk)

Tel: 01759 301142

Fax: 01759 301143

[sales@wolflabs.co.uk](mailto:sales@wolflabs.co.uk)



**Use the above details to contact us if this literature doesn't answer all your questions.**

**Pricing on any accessories shown can be found by keying the part number into the search box on our website.**

The specifications listed in this brochure are subject to change by the manufacturer and therefore cannot be guaranteed to be correct. If there are aspects of the specification that must be guaranteed, please provide these to our sales team so that details can be confirmed.

