



**Wolflabs**

# Wolf Laboratories Limited

[www.wolflabs.co.uk](http://www.wolflabs.co.uk)

Tel: 01759 301142

Fax:01759 301143

[sales@wolflabs.co.uk](mailto:sales@wolflabs.co.uk)



**If the literature below doesn't answer all your questions, click these links to:**

[Request details on an alternative product of the same type](#)

[Request details on accessories](#)

[Request details on other product categories](#)



## BioDoc-It™ Imaging Systems

BioDoc-It Systems are now available in two different styles: select from two camera and door designs. **BioDoc-It 220** models feature a 1.3 megapixel camera plus side access doors; **BioDoc-It 210 models** feature a 0.3 megapixel camera (no side doors). Capture, preview and save gel images with user-friendly features that enable fast, easy to use gel documentation. The simple design is excellent for multiple user laboratories. An external computer is not required though network connectivity is possible for transfer of images directly to a computer.

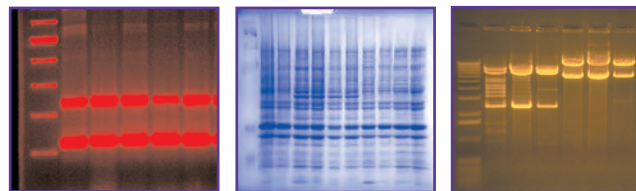
**Large 8" touch screen** displays live preview of images; the screen tilts for optimum viewing angle

**Save images** to the USB drive or connect to a network for image transfer to another computer

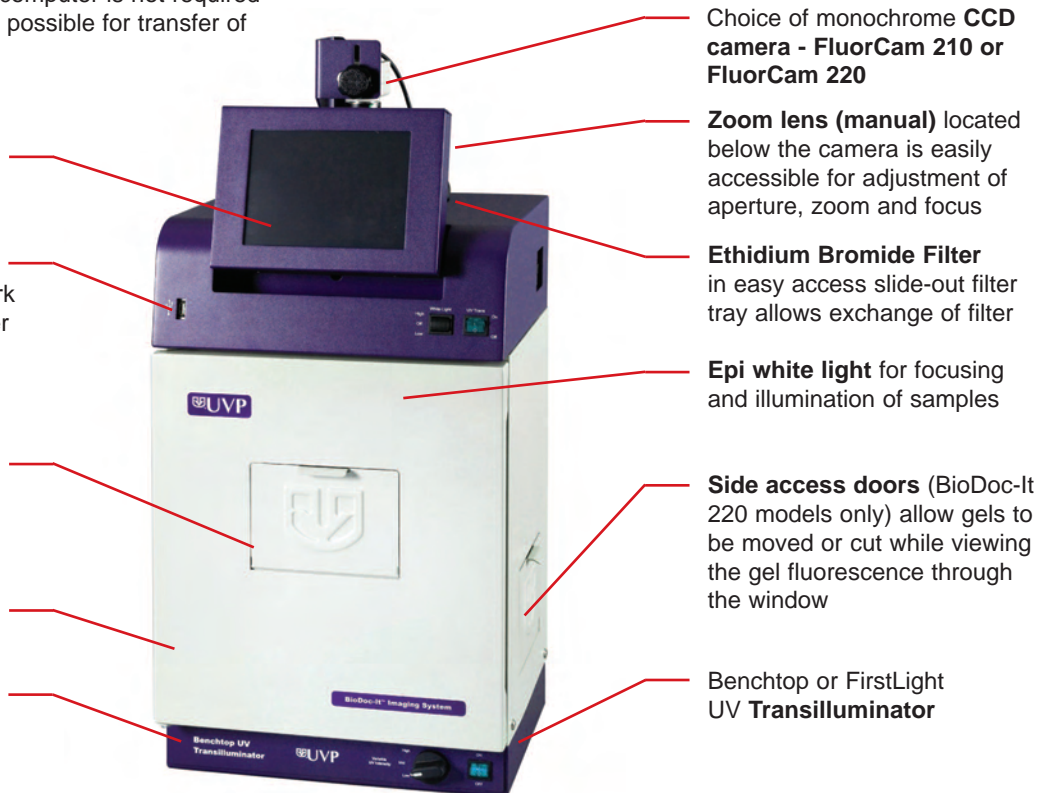
**Unique Viewer window** allows visibility of gels without opening the door

**Wide access door** with safety switch turns UV off when the door is open

**Compact design** for minimal laboratory bench space



**New High Resolution FluorCam 220 Camera Now Available!**



Choice of monochrome **CCD camera - FluorCam 210 or FluorCam 220**

**Zoom lens (manual)** located below the camera is easily accessible for adjustment of aperture, zoom and focus

**Ethidium Bromide Filter** in easy access slide-out filter tray allows exchange of filter

**Epi white light** for focusing and illumination of samples

**Side access doors** (BioDoc-It 220 models only) allow gels to be moved or cut while viewing the gel fluorescence through the window

Benchtop or FirstLight **UV Transilluminator**

### FluorCam 210\* Camera Specifications

CCD Imager:	Monochrome 8-bit scientific grade CCD
Resolution:	0.3 megapixels
Pixel Resolution:	640 x 480
Grayscale:	0 - 256
Lens:	5.7 - 34.2mm zoom

### FluorCam 220\* Camera Specifications

CCD Imager:	Monochrome 12-bit scientific grade CCD; 16-bit file bit depth
Resolution:	1.3 megapixels
Pixel Resolution:	1280 x 1024
Grayscale:	0 - 65,535
Lens:	8-48 mm zoom



Software interface on BioDoc-It and VisiDoc-It Systems quickly loads on the screen. All functions are selected directly from the buttons.

- **Live** – See a live preview of the gel
- **Snap** – Capture the image and **Save** the snapped image to TIFF, GIF and JPEG file formats
- **Print** – Connect to an optional printer
- **Time Stamp** – Set the date and time for each image captured
- **Exp Warn** – Set the exposure warning
- **Preferences** – Set user preferences
- **Integration** – Increase or decrease integration times

### Dimensions:

External with camera: 30.7H x 14.2W x 13.3D in. (780 x 361 x 338mm)  
Darkroom Internal: 11.7D x 12W x 12.8H in. (297 x 305 x 325mm)

\* Camera specifications subject to change without notice.

