



Wolflabs

Wolf Laboratories Limited

www.wolflabs.co.uk

Tel: 01759 301142

Fax:01759 301143

sales@wolflabs.co.uk



If the literature below doesn't answer all your questions, click these links to:

[Request details on an alternative product of the same type](#)

[Request details on accessories](#)

[Request details on other product categories](#)





CERTOMAT[®] S II
Orbital benchtop shaker

CERTOMAT® S II Orbital bench top shaker

The CERTOMAT® S II offers more features for your applications with two shaking amplitudes and digital control, making it a versatile tool for your laboratory. This benchtop, orbital shaker is ideal for a variety of applications including cultivating microorganisms and shaking separation funnels or other types of vessels.

For growth of cells in a temperature-controlled environment, the CERTOMAT® S II can be operated in our CERTOMAT® H | HK incubation hoods.

The CERTOMAT® S II is available in 25 mm and 50 mm orbit models. The triple bearing, brushless drive belt assembly is strong, stable, and quiet even with heavy loads. Shaking speed and time functions are adjusted with a liquid-resistant, membrane keypad with the values indicated on the LCD.

The design accepts a broad range of clamp types including 25 ml to 5 l Erlenmeyer and Fernbach clamps, and test tube rack and universal mounting systems for odd shaped vessels. An analog output for external recording of speed is included. The integrated memory function re-establishes the last setpoint after power failure. Visual alarm warns the user of malfunction. The unit is built in accordance with the EN 61010 regulation.

Benefits

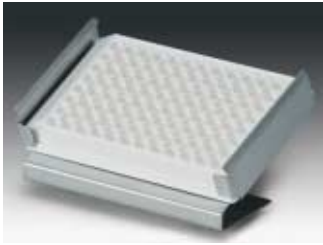
- Safe and easy tray fixation
- 25 mm and 50 mm orbit
- Speed 40–400 rpm
- Timer up to 98.59 hrs
- Analog out for documentation
- Memory function



Accessories



Reference	Description
	Tray type E (420×420 mm) equipped with stainless steel clamps for Erlenmeyer flasks
885 3533	39 clamps for flasks 100 ml
885 3568	20 clamps for flasks 250 ml
885 3584	14 clamps for flasks 500 ml
885 3606	9 clamps for flasks 1,000 ml
	Tray type E (420×420 mm) equipped with plastic clamps for Erlenmeyer flasks
885 3688	39 clamps for flasks 100 ml
885 3666	19 clamps for flasks 250 ml
885 3677	14 clamps for flasks 500 ml
	Tray type F (800×420 mm) equipped with stainless steel clamps for Erlenmeyer flasks
885 3738	74 clamps for flasks 100 ml
885 3762	40 clamps for flasks 250 ml
885 3789	26 clamps for flasks 500 ml
885 3800	15 clamps for flasks 1,000 ml
	Universal tray to be completed with clamps, racks or mounting system
885 3002	Type EU (420×420 mm)
885 3037	Type FU (800×420 mm)
	Stainless steel clamps for Erlenmeyer and Fernbach flasks (maximum number of clamps for tray type EU/type FU)
885 4505	for flasks 25 ml (max. 49/98)
885 4513	for flasks 50 ml (max. 48/96)
885 4521	for flasks 100 ml (max. 24/48)
885 4556	for flasks 250 ml (max. 17/39)
885 4572	for flasks 500 ml (max. 12/26)
885 4599	for flasks 1,000 ml (max. 8/17)
885 4610	for flasks 2,000 ml (max. 4/9)
885 4629	for flasks 3,000 ml (max. 4/8)
885 4637	for flasks 5,000 ml (max. 2/6)
885 4564	for Fernbach flasks 450 ml (max. 8/15)
885 4600	for Fernbach flasks 1,800 ml (max. 1/6)
885 4640	for Fernbach flasks 2,800 ml (max. 1/6)
	Plastic clamps reinforced with glass fibre (maximum number of clamps for tray type EU/type FU)
885 4700	for flasks 100 ml (max. 24/48)
885 4711	for flasks 250 ml (max. 18/39)
885 4722	for flasks 500 ml (max. 12/26)
885 4733	for flasks 1,000 ml (max. 8/17)
	Hinged racks for test tubes (4 racks max. on tray EU, 8 racks max. on tray FU)
885 3134	for 64 tubes Ø 14 mm
885 3142	for 42 tubes Ø 16 mm
885 3150	for 36 tubes Ø 18 mm
885 3169	for 33 tubes Ø 20 mm
885 3185	for 20 tubes Ø 25 mm
885 3177	for 16 tubes Ø 30 mm
	Hinged racks for centrifugation tubes (4 racks max. on tray EU, 8 racks max. on tray FU)
885 3088	for 42 tubes Ø 16 mm
885 3096	for 36 tubes Ø 18 mm
885 3193	for 33 tubes Ø 20 mm
885 3240	for 16 tubes Ø 30 mm



Reference	Description
885 0321	Holders for microtiter plates, stainless steel for 1 standard 96-well plate or deepwell plate standard plates: max. 12 holders on EU tray, 21 holders on FU tray deepwell plates: max. 9 holders on EU tray, 18 holders on FU tray



886 4497	Sticky tape for universal trays Standard, Width 30 mm, roll of 50 m
886 0419	Premium, Width 30 mm, roll of 10 m, for repeated use

886 4470	Anti-skid layer (not shown) 380×450 mm, for individual cut
----------	--



885 4238	Universal mounting system Basic element type B-2 for tray EU
885 4246	Basic element B-3 for tray FU
885 4254	Clamping rod, type U for mounting systems B-2 and B-3



886 1005	Shaking flasks DURAN, Erlenmeyer type, 3 baffles at 120°, straight rim Erlenmeyer flasks 300 ml, pack of 10
886 1013	Erlenmeyer flasks 500 ml, pack of 10
886 1021	Erlenmeyer flasks 1,000 ml, pack of 10
886 1022	Erlenmeyer flasks 2,000 ml, pack of 10



886 1064	Shaking flasks, DURAN, Erlenmeyer type, 3 baffles at 120°, straight rim, connector GL 14 Erlenmeyer flasks 300 ml, pack of 10
886 1072	Erlenmeyer flasks 500 ml, pack of 10
886 1080	Erlenmeyer flasks 1,000 ml, pack of 10



886 1099	Caps for Erlenmeyer flasks, straight rim Cap Aluminium, pack of 10
886 1102	Cap Stainless steel, pack of 10



886 0998	Shaking flasks, DURAN, Erlenmeyer type, 3 baffles at 120°, narrow neck for plug Erlenmeyer flasks 500 ml, pack of 10
----------	--

Technical Data

Ordering information

CERTOMAT® S II version with 25 mm orbit		
230 V/50–60 Hz	886 2524	CERTOMAT® S II/25 mm
115 V/50–60 Hz	886 2532	

CERTOMAT® S II version with 50 mm orbit		
230 V/50–60 Hz	886 2621	CERTOMAT® S II/50 mm
115 V/50–60 Hz	886 2631	

Technical data

Mechanical	Type of shaking: Amplitude: Shaking speed: Drive: Drive control:	Orbital motion 25 mm or 50 mm, convertible 40–400 rpm, depending on load brushless motor microprocessor controlled
Shaking speed	Speed adjustment: Indication: Accuracy:	foil key pad LCD, alphanumeric +1% of max. value
Timer	Adjustment: Display:	up to 98:58 h and continuous run LCD, alphanumeric
Trays	Suitable trays: Maximum load: Fixation of the tray:	E/EU (420×420 mm) F/FU (420×800 mm) All trays with accessories of Sartorius Program Fixation by snap mechanism
Electrical	Power supply:	230 V/50–60 Hz
Ambient conditions	Temperature: Relative humidity:	from 10 °C to 60 °C from 10 to 90% not condensing
Safety	Protection class: Memory: Alarm:	IP 21 Automatic restart after power failure Visual in case of malfunction
Documentation	Analog out:	Shaking speed
Dimensions and weight	L × H × D (without tray): Weight:	510×160×545 mm 46 kg

All instruments are delivered without tray and other accessories.

For growing cells or mixing liquids, a tray is needed together with additional accessories to hold shaking flasks, separation funnels or tubes.