

# LEC MEDICAL

## LABORATORY FREEZERS

We offer a wide range of Laboratory freezers to suit your needs, from smaller countertop units, ideal for when space is limited, space efficient under-counter models that fit easily under working benches, and a range of larger, freestanding units, ideal for when extra storage capacity is required.

**Efficient Under-counter Height**  
FULL HEIGHT OF UNIT 845MM

**New Advanced Controller**  
Manage the internal temperature and record min/max settings at the touch of a button

**Fitted Lock**  
Maintains security and helps prevent unauthorised access. All units come with 2 keys

**Anti Microbial Handle**  
Helps prevent the growth of bacteria and minimise the potential for cross contamination

**Wire Shelves and Basket**  
Enables optimal airflow inside the unit. Shelf positions can be varied for maximum storage capacity

**Fitted Rollers**  
For easy moving and cleaning

Icons: UK, -18-25°, 151L, Anti Micro, R600a, Lock

LSF151UK Under-counter Laboratory Freezer					
Model Number	SKU Code	Gross Capacity	Dimensions H x W x D (mm)	Weight (kg)	Temperature Range Freezer
LSF151UK	444440968	151 litres	845 x 595 x 595	36	-18°C to -25°C

We now sell on-shelf organisers compatible with many of our units, please see [page 16](#) for further details.



COUNTERTOP - ISU27C



UNDER-COUNTER - ISU37C



FREESTANDING - LSF232UK



### Other Laboratory Freezers

Model Number	SKU Code	Gross Capacity	Dimensions H x W x D (mm)	Weight (kg)	Temperature Range Freezer
ISU27C	444441802	50 litres	562 x 500 x 510	17	-18°C to -20°C
ISU37C	444441803	102 litres	830 x 495 x 620	33	-18°C to -20°C
LSF232UK	444440970	232 litres	1570 x 595 x 634	60	-18°C to -25°C

Please see [page 12](#) for fridge-freezer options

# LEC MEDICAL

## LABORATORY FRIDGE-FREEZERS

Offering the flexibility of a fridge and freezer in the same unit, and maximising storage space, Lec Medical provides a comprehensive range of combination fridge-freezers in different sizes to suit your requirements.



### New Advanced Controller

Manage the internal temperature and record min/max settings at the touch of a button



### Fitted Lock

Maintains security and helps prevent unauthorised access. All units come with 2 keys



### Wire Shelves

Enables optimal airflow inside the unit. Shelf positions can be varied for maximum storage capacity



### Plastic Baskets, Flaps and Door Organisers

Maximise space and offer protection to contents



### Anti Microbial Handles

Helps prevent the growth of bacteria and minimise the potential for cross contamination



### Fitted Rollers\*

For easy moving and cleaning



\*selected models

159L

104L



#### LSC263UK Freestanding Laboratory Fridge-Freezer

Model Number	SKU Code	Gross Capacity	Dimensions H x W x D (mm)	Weight (kg)	Temperature Range
LSC263UK	444440973	263 litres	1680 x 540 x 600	58	FRIDGE: +2°C to +10°C FREEZER: -18°C to -25°C

## Laboratory Fridge-freezers from Lec Medical

Fridge-freezers offer the optimal storage flexibility with two distinct temperature zones.

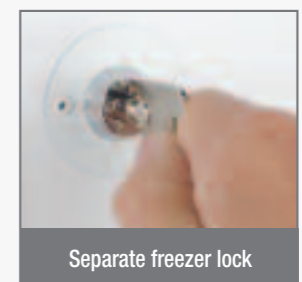
### Flexible storage

These units are a popular choice when space is limited and we offer a wide variety of sizes, from countertop units through to large freestanding alternatives.



### Peace of mind security

All Lec Medical units come with a fitted lock to ensure only authorised personnel have access, and our new freestanding fridge-freezers have unique separate fitted locks for the fridge and freezer compartments.

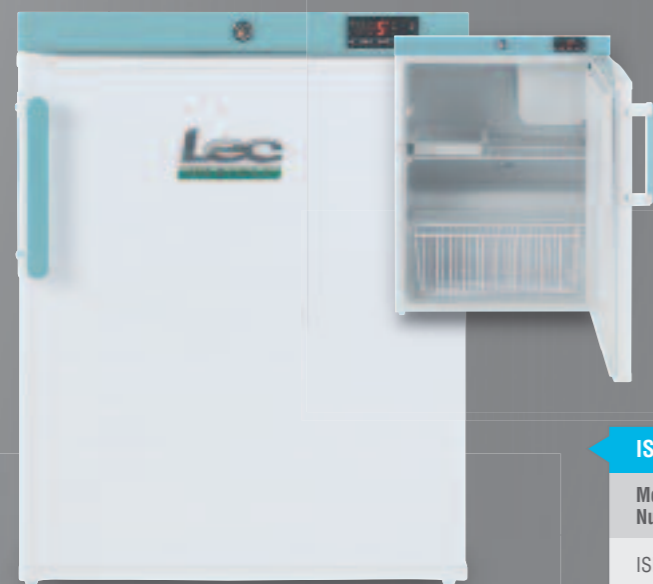


Separate freezer lock

# LEC MEDICAL

## OTHER LEC MEDICAL FRIDGE-FREEZERS

Offering the flexibility of a fridge and freezer in the same unit, and maximising storage space, Lec Medical provides a comprehensive range of combination fridge-freezers in different sizes to suit your requirements.



### COUNTERTOP

6.5L  
77L



Internal Freezer Compartment



#### ISR27C Countertop Laboratory Fridge-Freezer

Model Number	SKU Code	Gross Capacity	Dimensions H x W x D (mm)	Weight (kg)	Temperature Range
ISR27C	444441804	83.5 litres	660 x 502 x 540	25	FRIDGE: +2°C to +10°C FREEZER: -18°C to -20°C



### UNDER-COUNTER

13L  
106L



Internal Freezer Compartment



#### LSC119UK Under-counter Laboratory Fridge-Freezer

Model Number	SKU Code	Gross Capacity	Dimensions H x W x D (mm)	Weight (kg)	Temperature Range
LSC119UK	444440972	119 litres	860 x 540 x 600	34	FRIDGE: +2°C to +10°C FREEZER: -18°C to -25°C

NEW



190L  
134L

### FREESTANDING



#### LSC324UK Freestanding Laboratory Fridge-Freezer

Model Number	SKU Code	Gross Capacity	Dimensions H x W x D (mm)	Weight (kg)	Temperature Range
LSC324UK	444441790	324 litres	1870 x 600 x 600	70	FRIDGE: +2°C to +10°C FREEZER: -18°C to -25°C



### Our NEW Freestanding LSC324

The LSC324 is our largest fridge-freezer unit yet, offering a large 324 litre capacity in a space effective 600mm x 600mm footprint.

# LEC MEDICAL

## COST EFFECTIVE & SIMPLE STORAGE ALTERNATIVES

Lec Medical offers a range of storage solutions compatible with selected models in our Laboratory refrigeration range, enabling you to manage the space inside the fridge effectively and safely.

### MIX & MATCH

On-shelf organisers are all interchangeable and Lec Medical can offer a bespoke service to create the Laboratory refrigeration storage solution to best suit your needs.



### Anti-bacterial Sit On Shelf Organisers

Our tough plastic shelf organisers are perfect for organising drugs and vaccines most effectively. They simply sit on existing fridge shelves.

#### Key Features

- ✓ 448mm wide x 350mm deep footprint – suitable for many Lec models or other units already in your laboratory
- ✓ Anti-bacterial plastic inhibits bacterial growth and minimises the risk of cross contamination
- ✓ Supplied with 17mm pre-drilled holes to maintain effective cooling airflow within the fridge
- ✓ Extra dividers available separately to compartmentalise contents



Sit On Shelf Organiser

	SKU Code	Dimensions W x D (mm)
Base Tray	444441879	448 x 350
Dividers	444441880	-

Suitable for the following models:



# TEMPERATURE MAPPING



LABORATORY RANGE EXTRAS



The Lec Medical data logger is a simple and reliable way of recording the temperature inside your Laboratory fridge over a period of time.

#### EASY TO SET UP

This USB compatible data recorder is a simple and cost effective way of recording temperature within all Laboratory refrigerators.

Simply plug the data logger into your PC and set the logging rate and start time.

Then place the unit on a shelf inside the fridge, shut the door, and the logger will record the temperature at the intervals you select (every 10 seconds up to every 12 hours).

#### EASY TO DOWNLOAD

We supply the logger with software, allowing the user to quickly and easily configure the unit to meet their requirements.

Simply plug the logger into any USB port on your computer and download the stored data.

You can use this data in many ways and it can be easily displayed as a graph, enabling you to quickly view the temperature history inside the fridge over time.

#### LONG LASTING

✓ The logger works in a wide temperature range from -35°C to +80°C

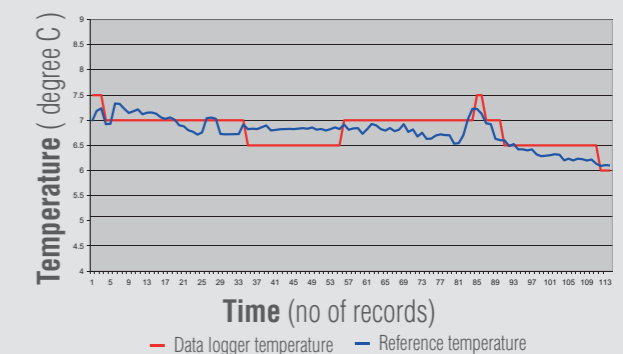
✓ Large memory capacity - you can store up to 16,382 readings

✓ The Lec Medical data logger has an easy to replace lithium battery for regular or extended use

#### Lec Medical Data Logger

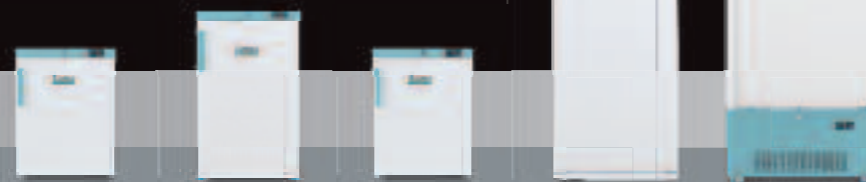
Model Number	ATMDL01
SKU Code	444448729
Dimensions H x W x D (mm)	25 x 25 x 100
Measurement Range	-35°C to +80°C
Accuracy	+/- 1°C

#### Example Output



# LEC MEDICAL

## DETAILED SPECIFICATIONS



Model No	LR207C	LR307	LSR151UK	LSR288 UK	LR1607C
<b>Description</b>	Countertop	Under-counter	Under-counter	Freestanding	Freestanding
<b>SKU code</b>	444441799	444441800	444440964	444440966	444441801
<b>EAN code</b>	5034648485689	5034648493264	5052263009646	5052263009660	5034648485696
<b>Gross capacity (L)</b>	82	107	151	288	475
<b>Net capacity (L)</b>	67	103	145	284	441
<b>External width (mm)</b>	502	495	595	595	695
<b>External depth (mm)</b>	540	620	595	634	910
<b>External height (mm)</b>	660	830	845	1570	1688
<b>Packed width (mm)</b>	520	560	657	657	770
<b>Packed depth (mm)</b>	595	655	694	734	950
<b>Packed height (mm)</b>	675	850	872	1585	1810
<b>Product weight (kg)</b>	27.5	103	36	58	95
<b>Packed weight (kg)</b>	30.5	107	40	63	116
<b>Country of origin</b>	UK	UK	UK	UK	UK
<b>Internal dimensions (wxdxh)</b>	415x340x540	403x400x540	500x450x705 step 165(d)x185(h)	480x445x1382 step 175(d)x255(h)	550x670x1170
<b>External finish</b>	White	White	White	White	White
<b>Internal finish</b>	White	White	White	White	White
<b>Type of plastic</b>	SRL800 (HIPS/ABS Mix)	SRL800 (HIPS/ABS Mix)	SRL800 (HIPS/ABS Mix)	SRL800 (HIPS/ABS Mix)	SRL800 (HIPS/ABS Mix)
<b>Temperature range</b>	+2°C to +10°C	+2°C to +10°C	+2°C to +10°C	+2°C to +10°C	+2°C to +10°C
<b>Colour</b>	White/green	White/green	White/green	White/green	White/green
<b>Door type</b>	Solid	Solid	Solid	Solid	Solid
<b>Door style</b>	Hinged, reversible	Hinged, reversible	Hinged, reversible	Hinged, reversible	Hinged, R/H only
<b>Door open depth (mm)</b>	976	1050	1165	1185	1596
<b>Replacement door seal</b>	No	No	No	No	No
<b>Open door sensor</b>	No	No	Yes	Yes	No
<b>Lock</b>	Yes	Yes	Yes	Yes	Yes
<b>Adjustable feet (number &amp; position)</b>	No	2, front	2 adjustable feet 2 rear rollers	2 adjustable feet 2 rear rollers	Castors
<b>Temperature display on panel</b>	Yes	Yes	Yes	Yes	Yes
<b>Temperature alarm</b>	Yes	Yes	Yes	Yes	Yes
<b>Number of shelves</b>	2	2	3	5	5
<b>Number of shelf positions</b>	2	4	6	12	30
<b>Shelf size (dxwxh) (mm)</b>	2: 438x274x6	2: 427x374x6	3: 320x520x6	5: 340x497x6	5: 536x609x6
<b>Shelf material</b>	Wire	Wire	Wire	Wire	Wire
<b>Moulded drawers</b>	0	0	0	1 Solid	0
<b>Adjustable door bins</b>	0	0	2 Wire	4 Solid	0
<b>Interior light</b>	No	No	No	No	No
<b>Fan</b>	No	No	No	No	No
<b>Spark free</b>	Yes	Yes	Yes	Yes	Yes
<b>Auto or manual defrost</b>	Automatic	Automatic	Automatic	Automatic	Automatic
<b>Controller type</b>	Digital, external	Digital, external	Digital, external	Digital, external	Digital, external
<b>Climate class</b>	N	N	SN	SN	N
<b>Refrigerant type</b>	R134a	R134a	R600a	R600a	R134a
<b>CFC free</b>	Yes	Yes	Yes	Yes	Yes
<b>HFC free</b>	No	No	Yes	Yes	No
<b>HCFC Free</b>	Yes	Yes	Yes	Yes	Yes
<b>UK 3 pin plug</b>	Yes	Yes	Yes	Yes	Yes
<b>Other plug types available</b>	Yes	Yes	Yes	Yes	Yes
<b>Voltage supply</b>	230	230	230	230	230
<b>Aux output</b>	No	No	No	No	No
<b>Insulation thickness (mm)</b>	30	35	45	60	65
<b>Insulation type</b>	Cyclopentane	Cyclopentane	Cyclopentane	Cyclopentane	Cyclopentane
<b>Anti microbial handle</b>	Yes	Yes	Yes	Yes	No



Model No	ISU27C	ISU37C	LSF151UK	LSF232UK	ISR27C	LSC119UK	LSC263UK	LSC324UK
<b>Description</b>	Countertop	Under-counter	Under-counter	Freestanding	Countertop	Under-counter	Freestanding	Freestanding
<b>SKU code</b>	444441802	444441803	444440968	444440970	444441804	444440972	444440973	444441790
<b>EAN code</b>	5034648485726	5034648493271	5052263009684	5052263009707	5034648485719	5052263009721	5052263009738	5052263017900
<b>Gross capacity (L)</b>	50	102	151	232	83.5 77 Fridge 6.5 Freezer	119 106 Fridge 13 Freezer	263 159 Fridge 104 Freezer	324 190 Fridge 134 Freezer
<b>Net capacity (L)</b>	38	87	134	212	80.5	117	245	302
<b>External width (mm)</b>	500	495	595	595	502	540	540	600
<b>External depth (mm)</b>	510	620	595	634	540	600	600	600
<b>External height (mm)</b>	562	830	845	1570	660	860	1680	1870
<b>Packed width (mm)</b>	520	560	657	657	620	602	597	657
<b>Packed depth (mm)</b>	595	655	694	734	595	639	684	734
<b>Packed height (mm)</b>	590	850	872	1585	675	877	1700	1885
<b>Product weight (kg)</b>	17	33	36	60	25	34	58	70
<b>Packed weight (kg)</b>	20	36.5	40	65	27	36	64	78
<b>Country of origin</b>	UK	UK	UK	UK	UK	UK	UK	UK
<b>Internal dimensions (wxdxh)</b>	345x330x365	414x415x683	500x450x705 step 165(d)x185(h)	432x430x1300 step 190(d)x255(h)	415x370x540	Fri 450x450x525 Fre 400x295x120 step 155(d)x225(h)	Fri 457x450x725 Fre 408x415x670 step 170(d)x220(h)	Fri 510x430x805 Fre 463x445x780 step 250(d)x260(h)
<b>External finish</b>	White	White	White	White	White	White	White	White
<b>Internal finish</b>	White	White	White	White	White	White	White	White
<b>Type of plastic</b>	SRL800 (HIPS/ABS Mix)	SRL800 (HIPS/ABS Mix)	SRL800 (HIPS/ABS Mix)	SRL800 (HIPS/ABS Mix)	SRL800 (HIPS/ABS Mix)	SRL800 (HIPS/ABS Mix)	SRL800 (HIPS/ABS Mix)	SRL800 (HIPS/ABS Mix)
<b>Temperature range</b>	-18°C to -20°C	-18°C to -20°C	-18°C to -25°C	-18°C to -25°C	Fri +2°C to +10°C Fre -6°C to -9°C	Fri -2°C to +10°C Fre -18°C to -25°C	Fri -2°C to +10°C Fre -18°C to -25°C	Fri +2°C to +10°C Fre -18°C to -25°C
<b>Colour</b>	White/green	White/green	White/green	White/green	White/green	White/green	White/green	White/green
<b>Door type</b>	Solid	Solid	Solid	Solid	Solid	Solid	Solid	Solid
<b>Door style</b>	Hinged, reversible	Hinged, reversible	Hinged, reversible	Hinged, reversible	Hinged, reversible	Hinged, reversible	Hinged, reversible	Hinged, reversible
<b>Door open depth (mm)</b>	976	1050	1165	1185	976	1090	1110	1190
<b>Replacement door seal</b>	No	No	No	No	No	No	No	No
<b>Open door sensor</b>	No	No	Yes	Yes	No	Yes	Yes	Yes
<b>Lock</b>	Yes	Yes	Yes	Yes	Yes	Yes	Yes	Yes
<b>Adjustable feet (number &amp; position)</b>	No	1, front	2 adjustable feet 2 rear rollers	2 adjustable feet 2 rear rollers	2 adjustable feet 2 rear rollers	2 adjustable feet 2 rear rollers	-	2 adjustable feet 2 rear rollers
<b>Temperature display on panel</b>	Yes	Yes	Yes	Yes	Yes	Yes	Yes	Yes
<b>Temperature alarm</b>	Yes	Yes	Yes	Yes	Yes	Yes	Yes	Yes
<b>Number of shelves</b>	1	2	3 baskets	4 baskets, 2 fixed flaps	2	2	3 (fridge)	3 (fridge)
<b>Number of shelf positions</b>	Fixed	Fixed	Fixed	Fixed	Set	4	6	6
<b>Shelf size (dxwxh) (mm)</b>	-	-	-	-	1: 438x274x6 1: 438x137x6	1: 308x448x4.5 1: 200x448x4.5	3: 308x448x4.5	3: 320x505x6
<b>Shelf material</b>	Wire	Wire	Wire baskets	Wire baskets	Wire	Wire	Wire	Wire
<b>Moulded drawers</b>	0	0	0	4 solid	0	1 solid	2 solid (half) (fridge)	2 solid (half) (fridge)
<b>Adjustable door bins</b>	0	0	0	0	0	2 full + 2 half	2 full + 2 half	2 full + 4 half
<b>Interior light</b>	No	No	No	No	No	No	No	No
<b>Fan</b>	No	No	No	No	No	No	No	No
<b>Spark free</b>	Yes	Yes	Yes	Yes	Yes	Yes	Yes	Yes
<b>Auto or manual defrost</b>	Manual	Manual	Manual	Manual	Fridge: Automatic Freezer: Manual	Fridge: Automatic Freezer: Manual	Fridge: Automatic Freezer: Manual	Fridge: Automatic Freezer: Manual
<b>Controller type</b>	Digital, external	Digital, external	Digital, external	Digital, external	Digital, external	Digital, external	Digital, external	Digital, external
<b>Climate class</b>	N	N	SN	SN	N	SN	SN	SN
<b>Refrigerant type</b>	R134a	R134a	R600a	R600a	R134a	R600a	R600a	R600a
<b>CFC free</b>	Yes	Yes	Yes	Yes	Yes	Yes	Yes	Yes
<b>HFC free</b>	No	No	Yes	Yes	No	Yes	Yes	Yes
<b>HCFC Free</b>	Yes	Yes	Yes	Yes	Yes	Yes	Yes	Yes
<b>UK 3 pin plug</b>	Yes	Yes	Yes	Yes	Yes	Yes	Yes	Yes
<b>Other plug types available</b>	Yes	Yes	Yes	Yes	Yes	Yes	Yes	Yes
<b>Voltage supply</b>	230	230	230	230	230	230	230	230
<b>Aux output</b>	No	No	No	No	No	No	No	No
<b>Insulation thickness (mm)</b>	30	35	45	60	30	45	60	60
<b>Insulation type</b>	Cyclopentane	Cyclopentane	Cyclopentane	Cyclopentane	Cyclopentane	Cyclopentane	Cyclopentane	Cyclopentane
<b>Anti microbial handle</b>	Yes	Yes	Yes	Yes	Yes	Yes	Yes	Yes