



Wolflabs

Wolf Laboratories Limited

www.wolflabs.co.uk

Tel: 01759 301142

Fax:01759 301143

sales@wolflabs.co.uk



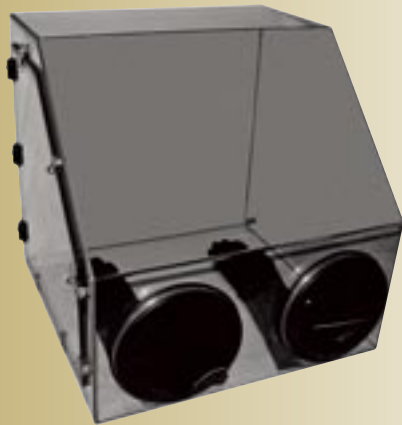
If the literature below doesn't answer all your questions, click these links to:

[Request details on an alternative product of the same type](#)

[Request details on accessories](#)

[Request details on other product categories](#)





glove boxes

Available in 4 sizes, Cleaver Scientific glove boxes are an ideal cost-effective solution for those scientists performing functions where containment is paramount. A robust construction from non-reactive polycarbonate allows each glove box to be used with inert gases such as helium, nitrogen and argon, making them well suited to functions requiring the exclusion of atmospheric oxygen and moisture. Each box, which includes hermetically-sealed gauntlets and a side panel as standard, provides a safe barrier between the worker and any potential contaminant. These boxes may also be supplied with airlocks and pressure-relieving valves at little extra cost.

Ordering Information

CSL-GB24	Standard 2 port 60 x 60 x 60cm	For additional accessories, please add the suffixes as follows (e.g. CSL-GB24A)	
CSL-GB36	Standard 2 port 90 x 60 x 60cm	A	Air Lock only
CSL-GB48	Standard 2 port 120 x 60 x 60cm	V	Valves only
CSL-GB60	Standard 2 port 150 x 60 x 60cm	AV	Air Lock and Valves