

July 2007

HARDWARE

UVIsave system

BASIC INSTANT

→ Get your instant printing in seconds. The unique design of UVIsave incorporates a user interface which is simplicity itself. Exposure time is varied by pressing a "+" button to increase and a "-" button to decrease. The exposure time ranges from 40ms to 10 seconds. All functions are accessed by a single push of a button.

→ UVIsave has all the flexibility of an instant photography system combined with the speed, versatility and precision of a video documentation system. UVIsave allow the optimization of your gel before you produce a print.

UVIsave control unit
with extra large bright display**For your gel only**

→ UVIsave works with virtually any UV or white light transilluminator. Simply place the camera hood over the gel, optimize image whilst viewing it on the built-in 5.6" LCD screen, freeze the image, then print to the video printer or save on CompactFlash™. The scientific grade optics and Sony camera provide supreme imaging performance for routine and publications applications.

→ The saturation monitoring function means that UVIsave can be used by researchers wishing to quantify the images while ensuring no loss of detail from image saturation.

→ With zero learning curve and only a few buttons to press, a high quality printout or a saved image can be produced in seconds, making queuing for the darkroom a thing of the past.

Gel watch

- All the flexibility of an instant photography system
- Speed, versatility and precision
- Low cost documentation systems with CCD scientific grade camera
- The world's simplest gel documentation system
- Ultra compact with no compromise on quality
- Giant 5.6" LCD screen
- Flexible – use with virtually any transilluminator
- Print to video printer or save on CompactFlash™
- Unlike digital camera systems, set your exposure time and monitor the saturation
- 6 times optical zoom
- Saturation monitoring



UVIsave hood. Works with virtually any transilluminator

NEW ENHANCED IMAGING SOFTWARE

Getting the word out

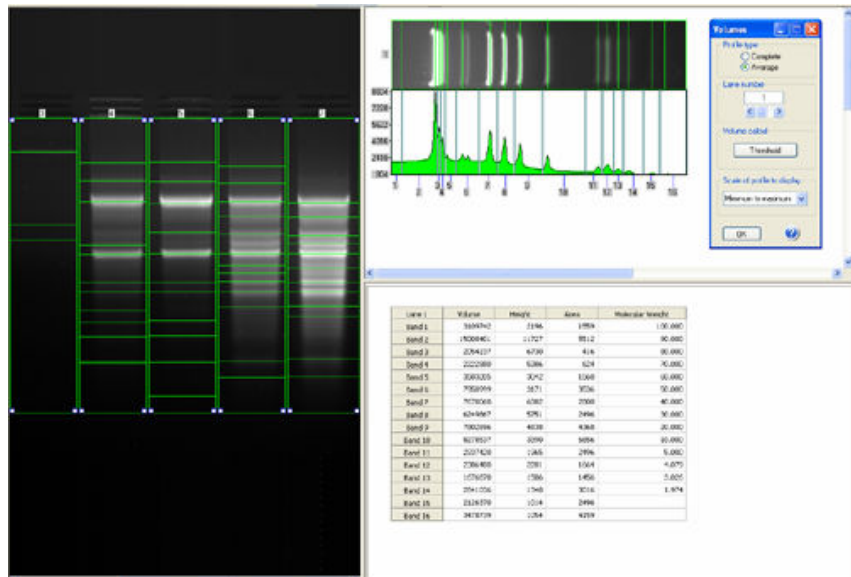
Highlight important features with text and symbols. The software helps you to annotate and illustrate your image.

Creating vibrant images

Enhance your image with the extensive and readily available set of tools such as multiple colour channels, cropping and image additions.

Needing to quantify or measure?

Just add a calibration marker for reference or measure the volumes to determine the quantity with our simple 1-2-3 approach.

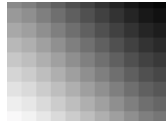


Clear and straight forward complimentary UVIsave1D software

SIZE MATTERS



Camera & optics



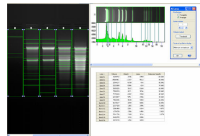
Sony scientific grade camera with electronically variable shutter speed
 0,5 Megapixels
 High sensitivity
 6 times optical zoom

Control unit



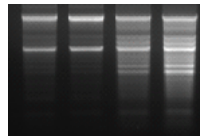
Super large built-in 5.6 inch TFT LCD display.
 Exposure time adjustment
 Saturation warning
 CompactFlash™ media drive
 Thermoformed hood - works with virtually any transilluminators

Software



UVIsave 1D software
 Image enhancement, annotation and illustration.
 3 image analysis modules:
 - 1D Molecular weight (MW, volume, intensity)
 - Colony counting
 - Distance calculation (RF, IEF)

Applications



- 1D nucleic acid
- 1D protein gel
- Microtitration plate or array
- Petri dish imaging
- Flash imaging

Options

- Transilluminator : UV surface: 26x21 or 20x20cm
- UV-PURE transilluminator or standard transilluminator.
- Single or dual wavelength available
- UV to white light or UV to blue conversion screen
- Advanced UVI-Band or UVI-BandMap software

UVISAVE



Sony scientific grade camera with electronically variable shutter speed

Thermoformed hood

Super large build-in 5.6 inch TFT LCD display.

Compatible with virtually any transilluminator