

July 2007

HARDWARE

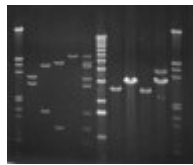
ESSENTIAL D77



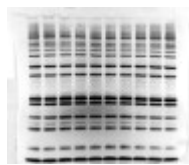
ESSENTIAL D55

ALL YOU NEED IS ME

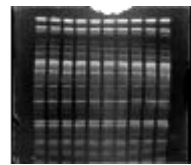
The system which fits your budget



Ethidium bromide gel



Protein gel



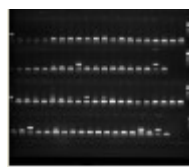
IEF



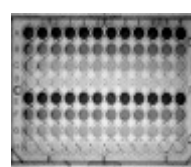
TLC



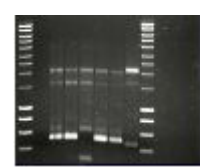
Colony plates



Multi-levels gels



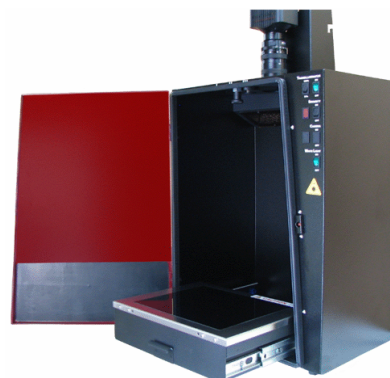
Microtitration plate



SYBR green gels

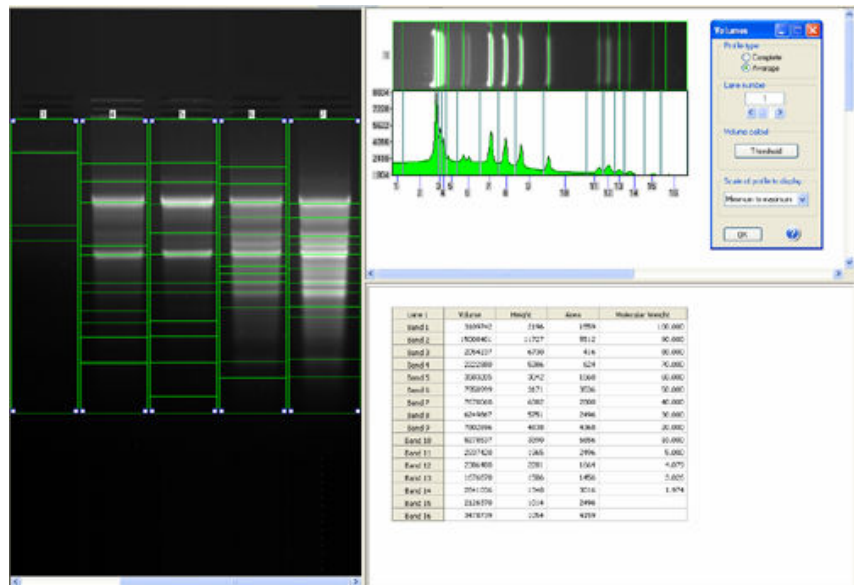
Key features

- Sony scientific grade CCD camera
- Ideal for publication and routine documentation
- Patent pending UVI-PURE technology available
- Extreme ease of use
- Comprehensive range of models for any application or budget
- Ideal for a multi-user environment
- Good Laboratory Practice file
- Free software for image acquisition, annotation and quantification
- Robust steel and stainless steel construction
- Wide variety of darkrooms and options to tailor your own system and fit your budget
- Superb quality camera filter optimized for ethidium bromide



Essential D55 darkroom

NEW ENHANCED IMAGING SOFTWARE



Clear and straight forward Essential 1D software

Your gel on live!

Our live preview mode ensures quick and easy sample positioning and fine focus.

Getting the word out

Highlight important features with text and symbols. The software helps you to annotate and illustrate your image.

Your kid could do it!

Start with a predefined set-up then optimize it for your particular technique. Name it, save it and then recall it for usage next time.

Creating vibrant images

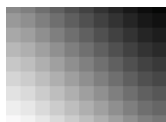
Enhance your image with the extensive and readily available set of tools such as multiple colour channels, cropping and image additions.

Needing to quantify or measure?

Just add a calibration marker for reference or measure the volumes to determine the quantity with our simple 1-2-3 approach.

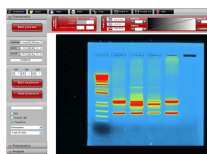


Camera & optics



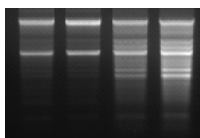
Sony scientific grade camera with electronically variable shutter speed
 0,5 Megapixels
 8-bit performance (4 096 grey levels)
 Super-high sensitivity
 6 times optical zoom

Software



Essential 1D software
 Image enhancement, annotation and illustration.
 3 image analysis modules:
 - 1D Molecular weight (MW, volume, intensity, ...)
 - Colony counting
 - Distance calculation (RF, IEF, ...)

Applications



- 1D nucleic acid
- 1D protein gel
- Microtitration plate or array
- Multiplexing samples
- Plant or bioluminescent samples
- Petri dish imaging
- Flash imaging

Options

- Transilluminator: UV surface: 26x21 or 20x20cm
- UV-PURE or standard transilluminator.
- Single or dual wavelength available
- Manual or motorized zoom lens
- UV to white light or UV to blue conversion screen
- Advanced UVI-Band or UVI-BandMap software



Essential D77 darkroom

TAYLOR YOUR SYSTEM

ESSENTIAL D77



Manual or motorised zoom lens options

Multi-position filter wheel to cover virtually all applications

Say no to plastic!
Steel and stainless steel darkroom
Epoxy-painted for chemical resistance
Black body imaging grade

6 illumination options
Bio-fluorescence and multiplexing ready – optional Epi-Bright
Multi-wavelength epi-illumination source

Smart control panel with UV security option

Full imaging grade darkroom
Complete black imaging body

Roll-out transilluminator
UV-PURE option
UV security timer

ESSENTIAL D55



Manual or motorised zoom lens options

3 positions filter slide

Say no to plastic!
Steel and stainless steel darkroom
Epoxy-painted for chemical resistance

Smart control panel with UV security option

Full imaging grade darkroom
Complete black imaging body

Roll-out transilluminator
UV-PURE option
UV security timer
Single (312nm) or dual wavelengths (312 & 365nm) for preparative work