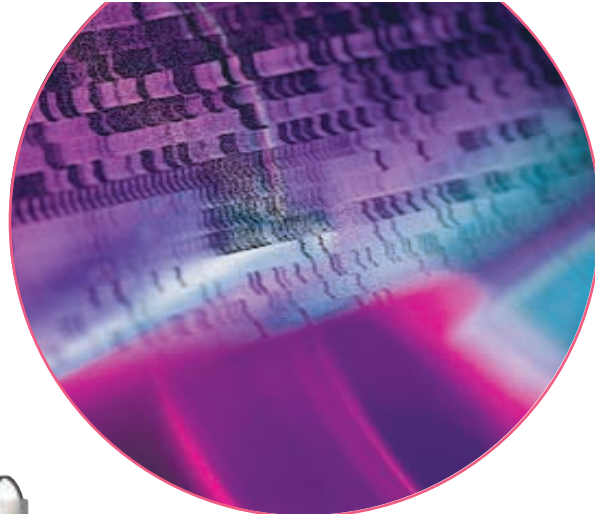


uvipro

gel documentation system



The UVipro range is a series of highly sophisticated gel documentation systems

for top quality image capture and analysis. Encompassing a comprehensive range of options from the basic and inexpensive UVipro Bronze to the state of the art UVipro Platinum, all UVipro's are operated from a PC with dedicated software and allow very precise optimisation of the image prior to printing or analysis. The basic UVipro design includes a CCD

camera (with PCI acquisition card or firewire connection), darkroom cabinet, UV transilluminator, zoom lens, uv/ir filter, thermal video printer and acquisition/basic analysis software package. With choices of camera, darkroom cabinet, zoom lens, filter and UV transilluminator, UVipro offers the broadest possible range of specifications and price.

- Comprehensive range of models for any application or budget
- Sophisticated image capture and documentation direct to PC
- Highest quality imaging with optional comprehensive analysis
- Ultra-simple, user friendly software interface
- Multi-user capability and Good Laboratory Practice (GLP)

A system for every application and budget!

The UVipro range includes systems for almost any fluorescence imaging application and budget. Comprising a number of interchangeable modules, there are many choices of UVipro, from basic, inexpensive models up to the most advanced and sophisticated systems available. For simplicity, the UVipro range is divided into four main models, Platinum, Gold, Silver and Bronze, detailed on page 7.

State of the art design

The top of the range UVipro Platinum incorporates the very best available options throughout. The DBT2000 is the most advanced, efficient and versatile darkroom cabinet available, while the superb quality 14-bit, ultra-high resolution camera is the best available for gel documentation. The motorised zoom lens is easily controlled from the user-friendly software screen and the standard filter offers the highest signal to background ratio available for ethidium bromide detection. These features combine to make UVipro Platinum the most advanced and sophisticated gel documentation system available.

Easy, intuitive operation

As with the stand-alone UVIdoc system, UVipro has all the benefits of speed and simplicity. With minimal learning curve and intuitive, icon-driven software, a high quality print out or TIFF file archive can be produced in seconds. UVipro may be easily used at a number of levels, ranging from simple push button operation to highly precise image optimisation. The live image is viewed on the computer screen and optimised via precise and user-friendly slider bar controls.

CCD Cameras:

UVipro Bronze, Silver, Gold:

Resolution: 762 x 582

Dynamic range: 8-bit (256 grey levels)

UVipro Platinum:

Resolution: 1280 x 1024

Dynamic range: 14-bit (16,384 grey levels)

Darkroom cabinets:

DBT-2000: Advanced ultra-light tight design – Transilluminator (mini-unit) fully enclosed, on convenient pull-out tray – Overhead (epi-) white light as standard and UV light as option – Filter wheel (three positions) – switch-able UV safety door interlock – Lighting options controlled from convenient external switch panel.



DBT-08: Simple "classic" design – Compact size, fits onto mini (BXT/BTS) sized transilluminators – UV safety door interlock – overhead (epi-) white light.



DST-15: Simple "classic" design – Standard size, fits onto standard (SXT/STS) sized transilluminators – UV safety door interlock – Overhead (epi-) white light.

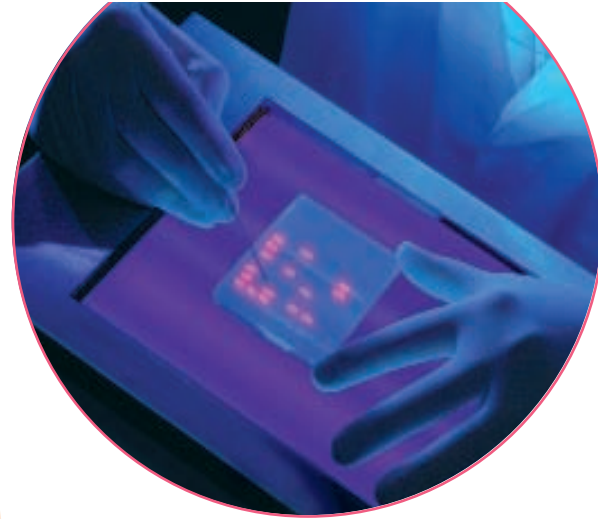
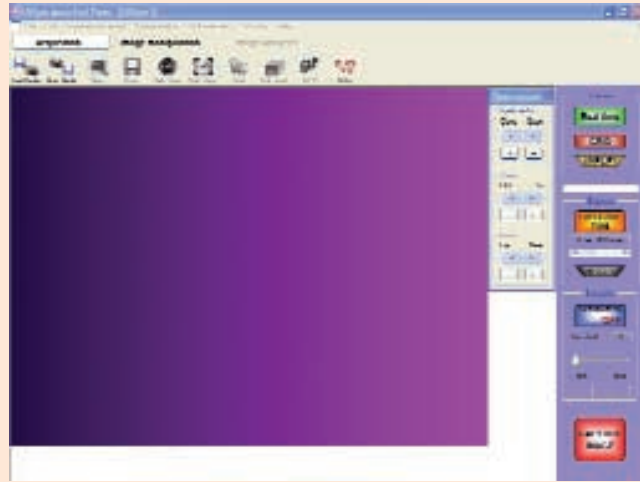


HC 40: Basic camera hood as used with UVIsave system (p8) – Lightweight and strong ABS construction – Carrying handle for easy portability – Usable with any transilluminator.



uvipro

acquisition software



UVipro acquisition software is designed to maximise flexibility and ease of use, the two most important characteristics for this type of software. Flexibility comes from an array of features for pre-acquisition image optimisation and post-acquisition processing while ease of use comes from the convenient layout and user-friendly adjustment tools. What is more, acquisition parameters can be saved for future use by each individual user and images can be saved in a variety of formats suitable for export to almost any image processing software. The design is in a modern and attractive XP-style, driven by colourful and descriptive icons.

Operating on WINDOWS XP, 2000, 98 and ME platforms, UVipro includes many features for treatment of a captured image such as brightness, contrast, annotation and basic analysis in a user-friendly and familiar WINDOWS style layout. In addition, UVipro has the following special features:

- Image Window, providing a full resolution display of live or captured image
- Acquisition toolbar, conveniently including all controls for optimisation of the live image
- Image invert button for viewing an 'inverted' live image
- Easy to use slider bars for coarse and fine control of exposure time. Exposure adjustment in two ranges, 80ms-5s in 40ms increments and 5s-120s in 1s increments
- Grid facility for checking alignment of the gel in the field view
- Configuration file saving facility. The acquisition parameters (exposure time, gain, offset) can be saved as a file and re-loaded automatically by opening the file
- Good Laboratory Practice (GLP) function. A GLP file is automatically saved with each image file. The user can input an experiment title, some comments and the camera lens settings while all post-capture image modifications are recorded automatically. In addition, all relevant software-defined acquisition parameters are saved (eg. exposure time).

uvipro

product specifications

uvipro platinum

UVipro platinum: designed for the most sophisticated and demanding users who require exceptionally high resolution and dynamic range coupled to the highest level of versatility and automation.

GAS7512X:
Includes DBT-2000LS cabinet, high resolution, 14-bit firewire camera, PCI firewire card, motorised zoom lens, high performance filter,

BXT-26M transilluminator, Mitsubishi P93 thermal printer, UVipro platinum acquisition software, 1 copy UVibandmap analysis software, Pentium PC.



uvipro gold

UVipro Gold: Designed for the user with fewer demands for high resolution and dynamic range but the same requirements for quality and versatility.

GAS7401B:
Includes DBT-2000W cabinet, SONY 8-bit video camera, manual zoom lens and filter, UVipro acquisition card and software, BXT-26M

transilluminator, Mitsubishi P93 thermal printer, 1 copy UViband analysis software.



uvipro silver

UVipro Silver: The original "classic" UVipro design, ideal for all routine gel documentation applications.

GAS7300:
Includes DBT-08 cabinet, SONY 8-bit video camera, UVipro acquisition card and software, manual zoom lens and filter,

BXT-20M transilluminator, Mitsubishi P93 thermal printer.



uvipro bronze

UVipro bronze: The "economy" model, ideal for small laboratories with limited budget, as a "starter" system, or for laboratories with low usage.

GAS7200:
Includes HC-40 hood, SONY 8-bit video camera, UVipro acquisition card and software, manual zoom lens and filter, Mitsubishi P93 thermal printer.

