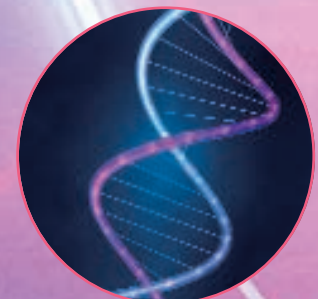
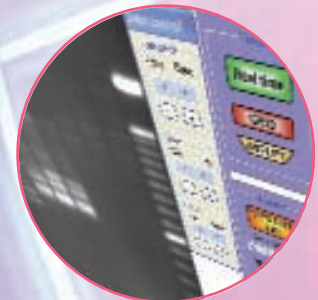
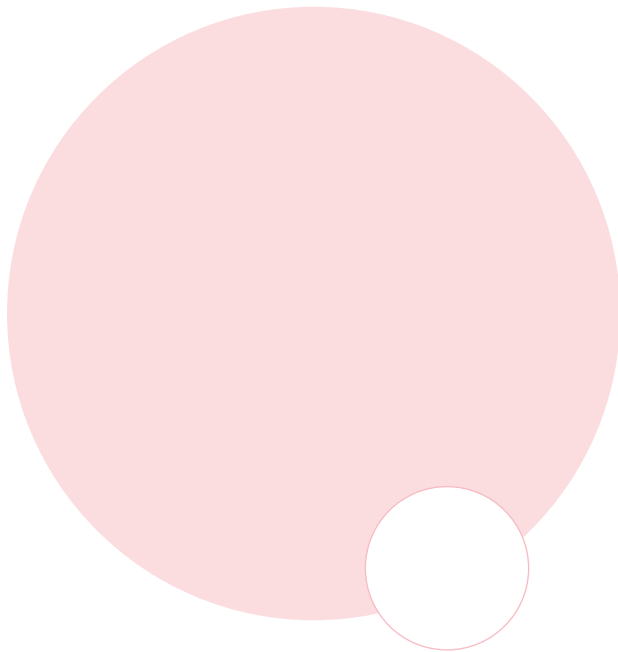




uvitec

UVitec Limited
Avebury House 36a Union Lane
Cambridge CB4 1QB UK
Telephone: +44 (0)1223 568060
Fax: +44 (0)1223 306198
Email: uvi@uvitec.co.uk
<http://www.uvitec.co.uk>



uvitec

professional ultraviolet equipment
at your fingertips



Founded in Cambridge in 1996, UVIttec is an independent supplier of high quality fluorescent gel and chemiluminescence documentation and analysis systems, plus a wide range of ultraviolet light sources and equipment. At UVIttec we give very high priority to technical expertise and customer support for all our products, which have become well established in many leading scientific establishments worldwide.

Along with our much visited website, this catalogue performs a vital role in providing up to date information on our complete range of products to our many potential customers throughout the world. As such it is one of our most important sales and marketing tools, which is reflected in the high production quality and attention to detail displayed on each page.



The information in this catalogue is supplemented for some products by more detailed information, which can be obtained by contacting UVIttec direct, your local UVIttec distributor, or by visiting the UVIttec website, where brochures and specification sheets may be downloaded.

visit our website at

www.uvitec.co.uk

call us

+44 (0)1223 568060

email

uvi@uvitec.co.uk

Contents

UVIdoc	gel documentation system	2 & 3
UVIpro	gel documentation system	4 & 5
UVIpro	acquisition software	6
UVIpro	product specifications	7
UVIsave	gel documentation system	8
UVIchrompro	tlc documentation system	9
UVIchemi	chemiluminescence imaging system	10
UVIprochemi	chemiluminescence imaging system	11
UVIsoft	chemiluminescence acquisition software	12
UVIchemi/prochemi	specifications	13
UVIsoft	gel analysis software	14 – 16
UVImeter	ultraviolet radiometers	17
UVIvue	ultraviolet transilluminators	18 & 19
UVIlite	ultraviolet lamps	20 & 21
UVIlink	ultraviolet crosslinker	22
UVIcab	ultraviolet viewing cabinets	23
	replacement ultraviolet tubes	24
	ultraviolet safetywear	24
	electrophoresis and UVGene	25

uvidoc

gel documentation system



UVIdoc is a superbly designed low cost documentation system featuring a unique combination of simplicity and versatility. It operates as a stand-alone system for producing high quality thermal prints of gel images. However, the compact flash slot & built-in disk drive unit also allow image capture direct to flash card or floppy disk (as TIFF or JPG files). The images produced can be saved as either 8 bit or 12 bit files, the format can be chosen by the user. The images can then be loaded into the UVgeltec software which enables image manipulation, annotation and simple analysis. Saturation monitoring of the live image ensures that fully quantifiable images may be captured first time.

- Ultra-simple, low cost documentation systems
- 8 or 12 bit file formats for increased dynamic range
- Ideal for multi-user environments
- Compact flash and floppy disk drive for saving images as TIFF or JPG file formats
- Light saturation of image detectable on monitor or LCD screen
- Fully networkable allowing easy image transfer to and from a PC.

A brand new unique feature for the UVIdoc is the addition of a network card into the darkroom cabinet. This will enable the user to install the UVIdoc onto their local network allowing fast and easy access to images already stored on the UVIdoc. Random Access memory (RAM) will allow 30 images to be stored for easy transfer.

UVIdoc is available in two versions. GAS9500 has a built-in 4 inch LCD screen which replaces the CCTV monitor supplied with GAS9000. All other features and functions are the same for both systems.

Because both models of UVIdoc are so simple to operate, minimal training is required and high quality images can be acquired in seconds. This, combined with safety features, makes either UVIdoc ideal for environments with a high number of regular or casual users. The user interface includes a wipe-clean six-button key-pad conveniently positioned at eye level. A safety-interlocking darkroom door protects the user from harmful UV output.

No more queues for documentation

Many laboratories have already discovered the benefits of UVIdoc speed and simplicity. With no learning curve and only a few buttons to press, a high quality print out or image file on flash or floppy can be produced in seconds, making darkroom queues a thing of the past. For the more advanced user, images can be transferred from the UVIdoc by a local network connection.

Multi-user UVIdoc

UVIdoc is currently in use in many research departments as a central facility for large numbers of users. The safety, speed and robustness of UVIdoc have even made it an essential tool in many teaching laboratories, the ultimate multi-user environment!

Multi-purpose UVIdoc

UVIdoc's special combination of simplicity and functionality has made it indispensable to a wide range of users. The saturation monitoring function means that UVIdoc can be used by researchers who wish to quantify their gel images and also ensures no loss of detail from the image due to saturation. The system can therefore be used on a variety of levels, from simple hard copy generation, to more sophisticated image acquisition for analysis.

UVIdoc – dedicated to simplicity

The unique design of UVIdoc incorporates a user interface which is simplicity itself. Exposure time is varied by pressing a '+' button to increase and a '-' button to decrease. The exposure time is in 10 pre-set steps, ranging from 40ms up to 10secs. Just four other buttons control features such as live/freeze modes, saturation monitoring, save to flash or disk and read from flash or disk. All functions are accessed by a single button push.

Standard components include

- Darkroom and Control Unit
- BXT-20M Mid range (312nm) dual intensity Transilluminator
- SONY CCD Camera
- Zoom lens and filters
- Mitsubishi P93 Thermal Printer

Optional extras

- UV to white light conversion screen with 26 x 21cm active area

GAS9500 incorporates a high quality TFT viewing screen

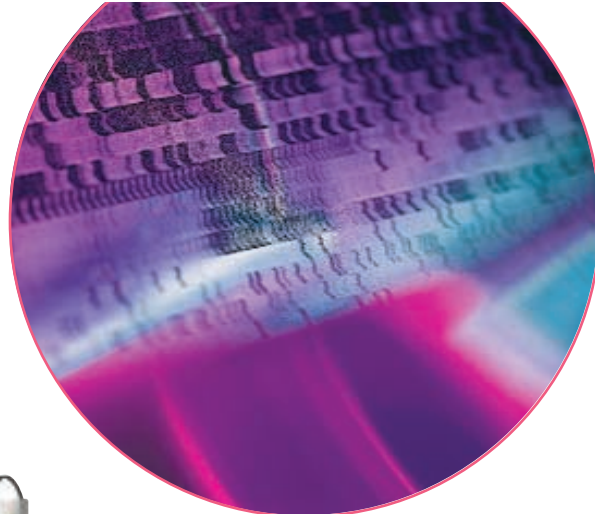


Ordering

- | | |
|-----------------|---|
| GAS9000 | Camera, zoom lens and filter, darkroom + control unit, transilluminator, B/W monitor, Mitsubishi printer + UVgeltec software |
| GAS9500 | Camera, zoom lens and filter, darkroom with control unit and LCD screen, transilluminator, Mitsubishi printer + UVgeltec software |
| GAS9001B | As GAS9000 and including UViband, UVImap or UVIsport analysis software |
| GAS9001X | As GAS9000 and including UVibandmap analysis software |
| GAS9501B | As GAS9500 and including UViband, UVImap or UVIsport analysis software |
| GAS9501X | As GAS9500 and including UVibandmap analysis software |

uvipro

gel documentation system



The UVipro range is a series of highly sophisticated gel documentation systems

for top quality image capture and analysis. Encompassing a comprehensive range of options from the basic and inexpensive UVipro Bronze to the state of the art UVipro Platinum, all UVipro's are operated from a PC with dedicated software and allow very precise optimisation of the image prior to printing or analysis. The basic UVipro design includes a CCD

camera (with PCI acquisition card or firewire connection), darkroom cabinet, UV transilluminator, zoom lens, uv/ir filter, thermal video printer and acquisition/basic analysis software package. With choices of camera, darkroom cabinet, zoom lens, filter and UV transilluminator, UVipro offers the broadest possible range of specifications and price.

- Comprehensive range of models for any application or budget
- Sophisticated image capture and documentation direct to PC
- Highest quality imaging with optional comprehensive analysis
- Ultra-simple, user friendly software interface
- Multi-user capability and Good Laboratory Practice (GLP)

A system for every application and budget!

The UVipro range includes systems for almost any fluorescence imaging application and budget. Comprising a number of interchangeable modules, there are many choices of UVipro, from basic, inexpensive models up to the most advanced and sophisticated systems available. For simplicity, the UVipro range is divided into four main models, Platinum, Gold, Silver and Bronze, detailed on page 7.

State of the art design

The top of the range UVipro Platinum incorporates the very best available options throughout. The DBT2000 is the most advanced, efficient and versatile darkroom cabinet available, while the superb quality 14-bit, ultra-high resolution camera is the best available for gel documentation. The motorised zoom lens is easily controlled from the user-friendly software screen and the standard filter offers the highest signal to background ratio available for ethidium bromide detection. These features combine to make UVipro Platinum the most advanced and sophisticated gel documentation system available.

Easy, intuitive operation

As with the stand-alone UVIdoc system, UVipro has all the benefits of speed and simplicity. With minimal learning curve and intuitive, icon-driven software, a high quality print out or TIFF file archive can be produced in seconds. UVipro may be easily used at a number of levels, ranging from simple push button operation to highly precise image optimisation. The live image is viewed on the computer screen and optimised via precise and user-friendly slider bar controls.

CCD Cameras:

UVipro Bronze, Silver, Gold:

Resolution: 762 x 582

Dynamic range: 8-bit (256 grey levels)

UVipro Platinum:

Resolution: 1280 x 1024

Dynamic range: 14-bit (16,384 grey levels)

Darkroom cabinets:

DBT-2000: Advanced ultra-light tight design – Transilluminator (mini-unit) fully enclosed, on convenient pull-out tray – Overhead (epi-) white light as standard and UV light as option – Filter wheel (three positions) – switch-able UV safety door interlock – Lighting options controlled from convenient external switch panel.



DBT-08: Simple "classic" design – Compact size, fits onto mini (BXT/BTS) sized transilluminators – UV safety door interlock – overhead (epi-) white light.



DST-15: Simple "classic" design – Standard size, fits onto standard (SXT/STS) sized transilluminators – UV safety door interlock – Overhead (epi-) white light.

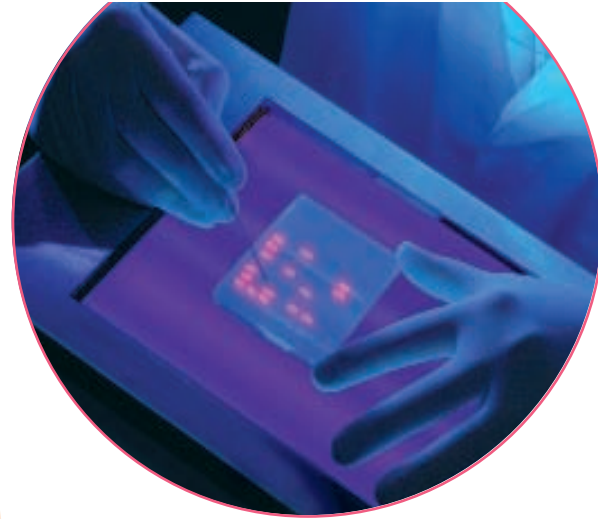
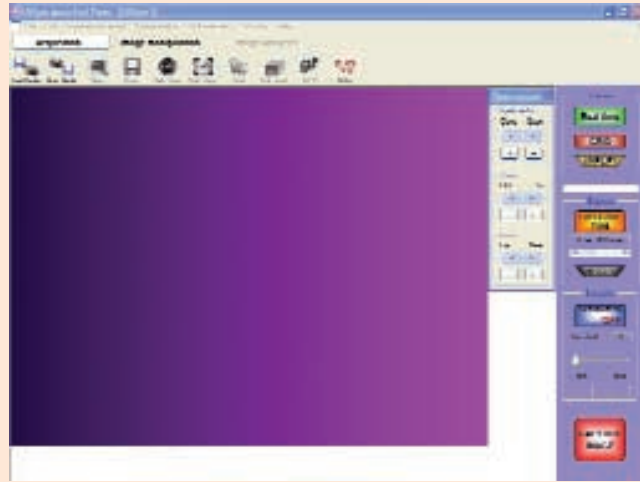


HC 40: Basic camera hood as used with UVIsave system (p8) – Lightweight and strong ABS construction – Carrying handle for easy portability – Usable with any transilluminator.



uvipro

acquisition software



UVipro acquisition software is designed to maximise flexibility and ease of use, the two most important characteristics for this type of software. Flexibility comes from an array of features for pre-acquisition image optimisation and post-acquisition processing while ease of use comes from the convenient layout and user-friendly adjustment tools. What is more, acquisition parameters can be saved for future use by each individual user and images can be saved in a variety of formats suitable for export to almost any image processing software. The design is in a modern and attractive XP-style, driven by colourful and descriptive icons.

Operating on WINDOWS XP, 2000, 98 and ME platforms, UVipro includes many features for treatment of a captured image such as brightness, contrast, annotation and basic analysis in a user-friendly and familiar WINDOWS style layout. In addition, UVipro has the following special features:

- Image Window, providing a full resolution display of live or captured image
- Acquisition toolbar, conveniently including all controls for optimisation of the live image
- Image invert button for viewing an 'inverted' live image
- Easy to use slider bars for coarse and fine control of exposure time. Exposure adjustment in two ranges, 80ms-5s in 40ms increments and 5s-120s in 1s increments
- Grid facility for checking alignment of the gel in the field view
- Configuration file saving facility. The acquisition parameters (exposure time, gain, offset) can be saved as a file and re-loaded automatically by opening the file
- Good Laboratory Practice (GLP) function. A GLP file is automatically saved with each image file. The user can input an experiment title, some comments and the camera lens settings while all post-capture image modifications are recorded automatically. In addition, all relevant software-defined acquisition parameters are saved (eg. exposure time).

uvipro

product specifications

uvipro platinum

UVipro platinum: designed for the most sophisticated and demanding users who require exceptionally high resolution and dynamic range coupled to the highest level of versatility and automation.

GAS7512X:
Includes DBT-2000LS cabinet, high resolution, 14-bit firewire camera, PCI firewire card, motorised zoom lens, high performance filter,

BXT-26M transilluminator, Mitsubishi P93 thermal printer, UVipro platinum acquisition software, 1 copy UVIbandmap analysis software, Pentium PC.



uvipro gold

UVipro Gold: Designed for the user with fewer demands for high resolution and dynamic range but the same requirements for quality and versatility.

GAS7401B:
Includes DBT-2000W cabinet, SONY 8-bit video camera, manual zoom lens and filter, UVipro acquisition card and software, BXT-26M

transilluminator, Mitsubishi P93 thermal printer, 1 copy UVIband analysis software.



uvipro silver

UVipro Silver: The original "classic" UVipro design, ideal for all routine gel documentation applications.

GAS7300:
Includes DBT-08 cabinet, SONY 8-bit video camera, UVipro acquisition card and software, manual zoom lens and filter,

BXT-20M transilluminator, Mitsubishi P93 thermal printer.



uvipro bronze

UVipro bronze: The "economy" model, ideal for small laboratories with limited budget, as a "starter" system, or for laboratories with low usage.

GAS7200:
Includes HC-40 hood, SONY 8-bit video camera, UVipro acquisition card and software, manual zoom lens and filter, Mitsubishi P93 thermal printer.



uvisave

gel documentation system



All the flexibility of an instant photography system, combined with the speed, versatility and precision of a video documentation system. Works with any UV or white light transilluminator. Simply place camera hood over gel, optimise image whilst viewing it on the built-in 4" LCD screen, freeze image, then print to video printer or save on floppy disk.

Unlike instant photography and digital camera systems, video documentation systems allow the optimisation of your gel image before you produce a print. This means no more wastage of time and expensive photographic film while you attempt to produce the best possible image. With Uvisave, you can adjust zoom, aperture, focus and exposure time and see the effects of the adjustments before image capture. This reduces the cost of an optimised image 'hard copy' from as much as several pounds with instant photography, to a few pennies with Uvisave. Also, since you can see an instant preview of any image adjustments, the entire process takes only seconds.

What is more, Uvisave includes a disk-drive unit, which allows the captured image to be saved as a computer file (TIFF format), opening up a huge range of modification, printing and analysis options. UVigeltec software is supplied for this purpose.

Ordering

GAS9200	Camera, zoom lens and filter, hood + control unit, UVigeltec software
GAS9201	Camera, zoom lens and filter, hood + control unit, UVigeltec software, Mitsubishi P93 printer
GAS9202	Camera, zoom lens and filter, hood + control unit, UVigeltec software, transilluminator (BXT-15M), Mitsubishi P93 printer
GAS9203	Camera, zoom lens and filters, hood + control unit, UVigeltec software, transilluminator (BXT-20M), Mitsubishi P93 printer

- The world's simplest gel documentation system
- Portable and versatile with no compromise on quality
- Flexible – use with any transilluminator
- Ultra-compact, rapid and easy to use
- Saturation monitor now included

uvichrom pro

UVIchrom-pro is an inexpensive system, specially designed for PC-based documentation and analysis of thin layer chromatography (TLC) plates. It is similar to the UVIpro system (see p4), but has a different darkroom cabinet and UV light source, plus a slightly modified software package in which the Molecular weight analysis function is replaced by Rf value calculation.

The UVIchrom darkroom hood is designed for efficient overhead UV illumination and imaging of thin layer chromatography plates. It incorporates four powerful (15 watt) UV tubes of optional wavelengths, positioned two on each side, above and close to the sample for maximum efficiency and uniformity of illumination. The camera is fixed to a special central mounting unit. White light illumination to aid sample positioning is also incorporated into the hood. The cabinet will allow imaging of plates in excess of 20 x 20cm.

UVIchrom can also be used with a high quality (3 CCD chip) colour camera and a dye sublimation printer. These can be supplied (at additional cost) in place of the standard 8-bit monochrome CCD camera and b+w thermal printer.

In addition to the standard, PC-based UVIchrom-pro system (PAS-5000), there is also a stand-alone (UVIdoc-type) system, the UVIchrom-doc (PAS-4000). This has the same darkroom cabinet, camera and printer as the UVIchrom-pro, but the PC acquisition card and software are replaced by a stand-alone control unit offering the same features and functions as the UVIdoc system (see p2). UVIchrom-doc is not available with the colour camera and printer option.

Ordering

PAS-5000: UVIchrom darkroom cabinet, acquisition board and software (including Rf value calculation), CCD camera, 8-48mm zoom lens, F-590 filter, Mitsubishi P93 thermal printer

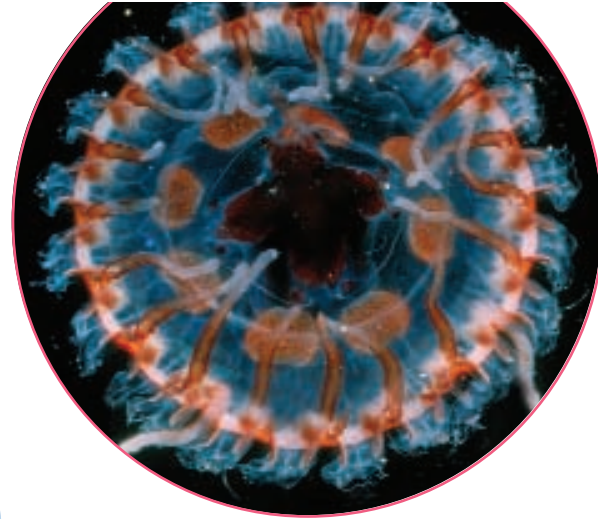
PAS-4000: UVIchrom darkroom cabinet, Doc 010XD control unit, CCD camera, 8-48mm zoom lens, F-590 filter, Mitsubishi P93 thermal printer, UVIchrom PC software (includes Rf calculation).



- Simple, low cost system specially designed for TLC plate documentation
- Specially designed darkroom cabinet for efficient and powerful overhead illumination of TLC plates
- Specially adapted UVIpro software allows basic image analysis with Rf value calculation for TLC spots
- Optional 3 CCD Colour Camera plus Dye Sublimation printer for exceptional results

uvichemi

super cooled for unrivalled sensitivity, unbeatable performance



UVIchemi is a state of the art dedicated chemiluminescence imaging system, designed for users who demand the very highest sensitivity and performance. The superb scientific grade CCD camera, with REAL 12-bit dynamic range, mega-pixel resolution and exceptionally low noise means that the UVIchemi can detect samples when other high specification imaging systems cannot. Long exposures without loss of image quality are made possible by the unique two-tier cooling system that keeps background noise to a minimum. The top quality fixed focal length lens ensures razor sharp image resolution at all times. The UVIchemi darkroom cabinet has a sample tray with 6 vertical positions and is precision made with a special door locking mechanism to eliminate light leakage.

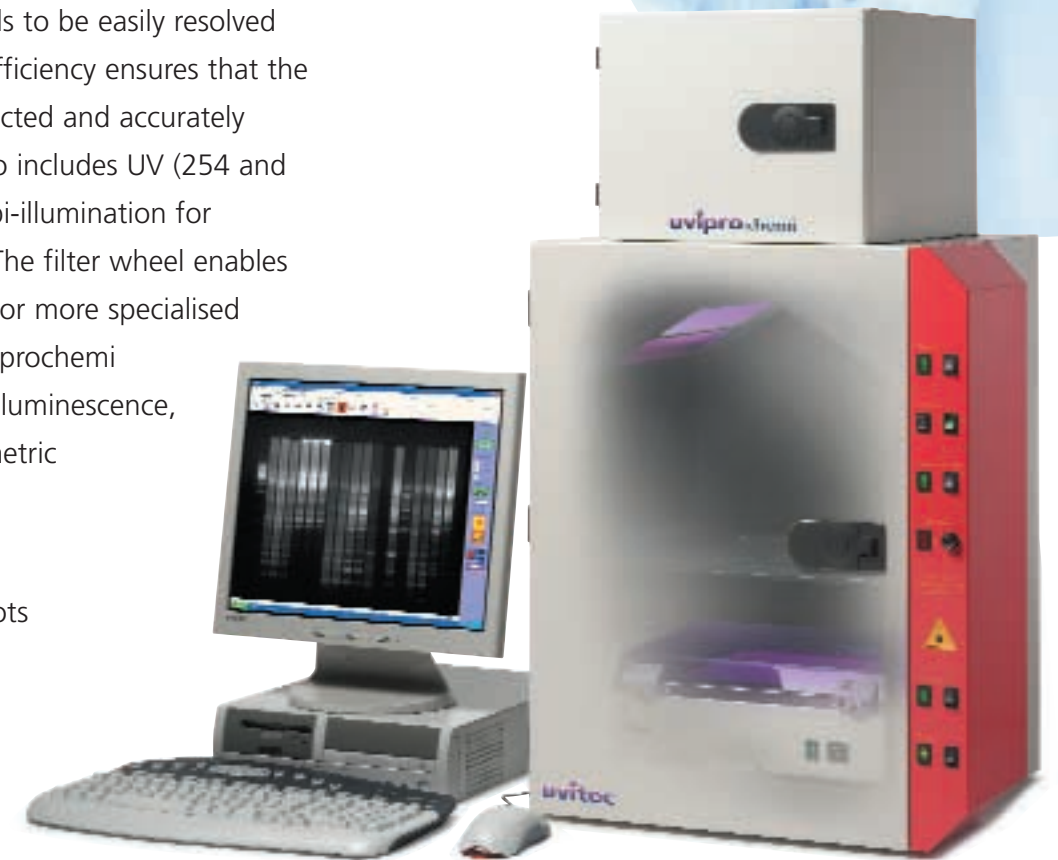


- Dedicated chemiluminescence system
- Unrivalled sensitivity for chemiluminescence applications
- Scientific grade, high-performance CCD camera
- Automatic exposure control
- Ultra light-tight compact darkroom

uviprochemi

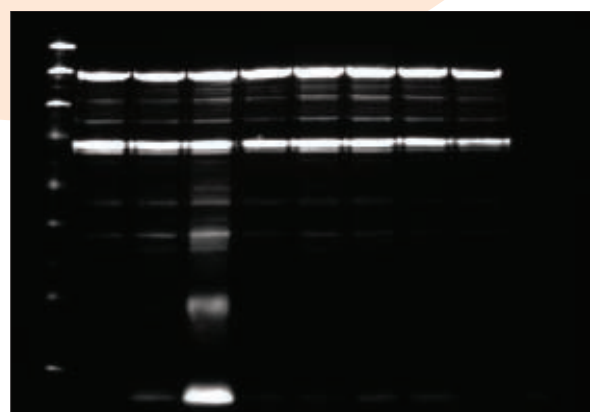
UVIprochemi is a versatile imaging system that handles both chemiluminescent and fluorescent imaging applications with ease. The high quality, light-tight darkroom cabinet incorporates a transilluminator on a pull-out drawer, a 3-position filter wheel and a software driven motorised zoom lens. The UVIprochemi is the perfect solution for laboratories with a range of demanding imaging applications. The exceptional camera resolution allows closely spaced bands to be easily resolved while the high quantum efficiency ensures that the faintest bands can be detected and accurately quantified. The system also includes UV (254 and 365nm) and white light epi-illumination for applications such as TLC. The filter wheel enables the use of multiple filters for more specialised fluorescent labels. The UVIprochemi handles all standard chemiluminescence, fluorescence and densitometric applications including:

- Western blots
- Southern and Northern Blots
- Dot/Slot Blots
- MTP assays
- TLC
- Colony Plates



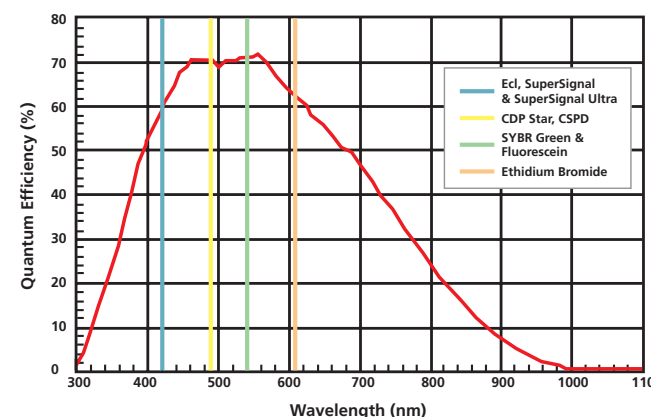
- Versatile Imaging system – Fluorescence and Chemiluminescence
- Overhead (epi-) UV and white light illumination
- Pull-out transilluminator with safety override for UV
- motorised zoom lens with GLP feedback
- Filter wheel for multi-application usage

The UVIchemi and UVIprochemi acquisition software facilitates simple and rapid optimisation of images when long exposures are necessary. Automatic exposure mode makes it possible to acquire fully optimised images of the very faintest samples at the push of a button. Varying levels of user control over the image acquisition process are offered by the semi-automatic and manual exposure modes. Acquisition parameters can be saved in configuration files for future use and are automatically saved with each image in a secure GLP file. The attractive software interface features large colour coded buttons and self-evident icon designs to minimise the user learning curve. The UVIprochemi software also includes zoom lens controls and a saturation monitor function.



- Easy to use with Windows® XP style software interface
- Automatic exposure control
- Video mode for sequential capture
- Save individual user settings
- Image saturation monitor
- GLP file automatically saved with each image

Specifications	uvichemi	uviprochemi
Camera	High sensitivity 12-bit, progressive scan, Grade 0 (0 defect) CCD sensor	High sensitivity 12-bit, progressive scan, Grade 0 (0 defect) CCD sensor
Resolution	1280 H x 1024 V effective pixels Pixel size 6.7µm x 6.7µm 640 H x 512 V pixels in 2 x 2 binning mode. Pixel size 13.4µm x 13.4µm	1280 H x 1024 V effective pixels Pixel size 6.7µm x 6.7µm 640 H x 512 V pixels in 2 x 2 binning mode. Pixel size 13.4µm x 13.4µm
Quantum efficiency	70% at 450nm	70% at 450nm
Cooling	-45°C below ambient by a 3-stage Peltier device, Extra Peltier device to cool camera housing	-45°C below ambient by a 3-stage Peltier device, Extra Peltier device to cool camera housing
Lens	Schneider fixed focal length (f: 0.95) manual lens for optimum light collection	motorised zoom lens (11.5-69mm f: 1.4) controlled via software
Darkroom	DNT-6000 cabinet with six-position adjustable tray system. Maximum sample size 21 x 18cm	DBT-8000 cabinet with white light and UV epi-illumination, pull-out transilluminator and 3-position filter wheel.
Software	Software compatible with Windows® 98, 2000 and XP	Software compatible with Windows® 98, 2000 and XP
Ordering information	uvichemi dedicated chemiluminescence imaging system Catalogue No. CAS 6002B DNT-6000 darkroom with six-position tray system, 12-bit cooled CCD camera, fixed focal length, Intel Pentium IV® PC with acquisition card, UVIchemi acquisition software and UVIband analysis software	uviprochemi versatile fluorescence and chemiluminescence imaging system Catalogue No. CAS 8001B DBT-8000 darkroom with 3-position filter wheel and epi-illumination (WL/UV), 12-bit cooled CCD camera, motorised zoom lens, mini UV-transilluminator, UVIprochemi acquisition card and software and UVIband analysis software



ECL, CDP-Star, CSPD, SYBR, SuperSignal, SuperSignal Ultra are the Trademarks of their respective owners.

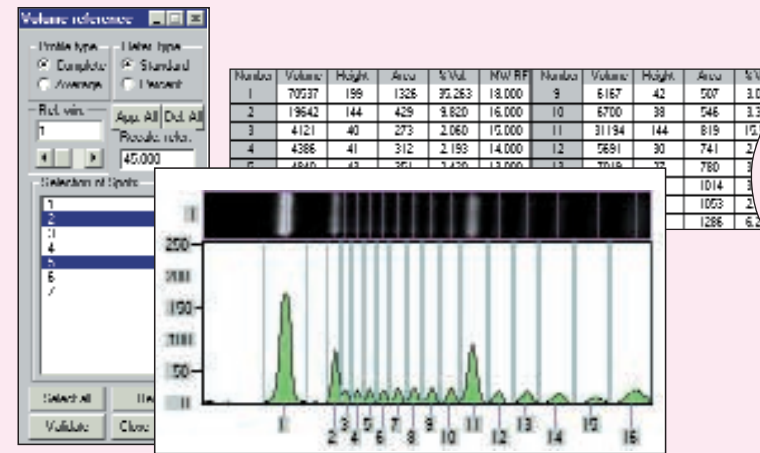
UVIsoft comprises a family of 4 analysis packages, UVIband, UVImap, UVIbandmap for 1D analysis and UVIsport for 2D analysis

- Rapid, accurate and intuitive
- Straightforward, stepwise analysis – no gimmicks
- Attractive, smart user interface
- Automated steps with optional user editing

UVIband

Versatile and powerful quantitative analysis

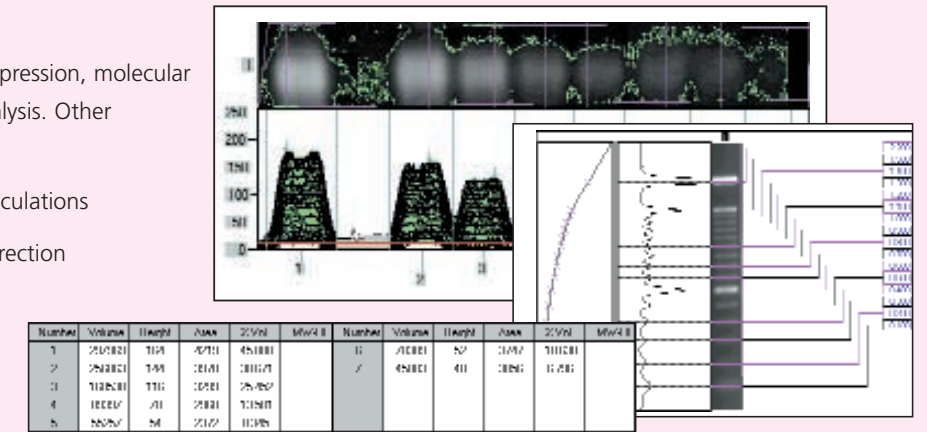
- Precise, accurate band quantification
- Fully automated background subtraction
- Calculates actual 3D volume, not 2D band area
- Relative or absolute band quantities calculable from reference bands or lane



Applications include:

PCR, RT-PCR, competitive PCR, protein expression, molecular weight/Rf analysis, dot blot/microtitre analysis. Other features include:

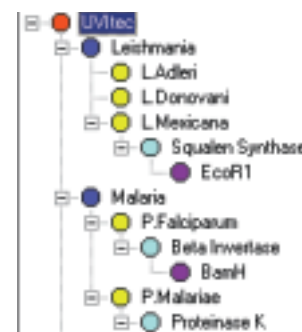
- Simple, reliable molecular weight/Rf calculations
- Automatic or manual gel distortion correction
- Multiple reference lanes for ultimate accuracy
- Dendrogram/band matching analysis



UVImap

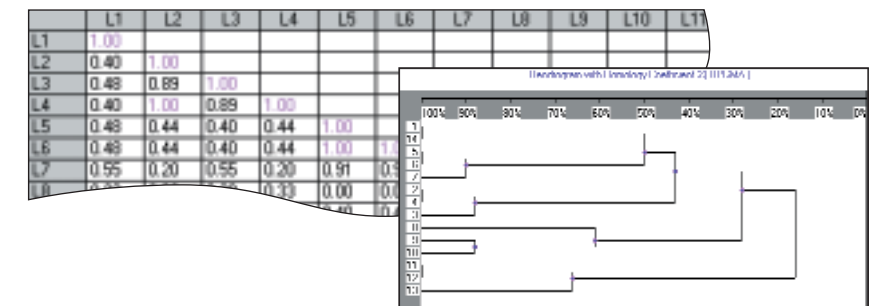
Effortless, trouble free comparative analysis

- Password protected database for easy storage and retrieval of molecular weight data
- Database search facility for lane homologies
- Inter gel comparison using matrix and dendrogram analysis
- Multiprobe analysis for RFLP/RAPD



Applications include:

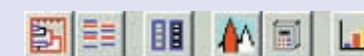
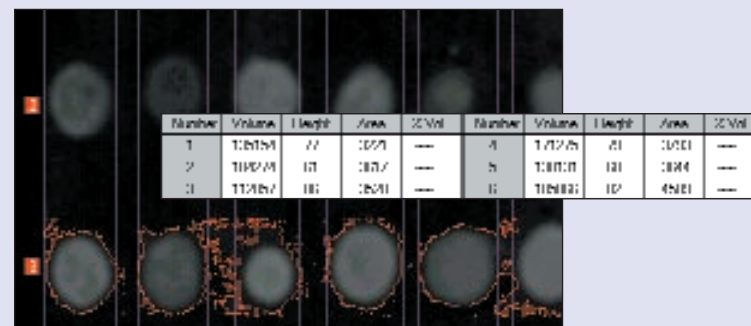
Pattern recognition, DNA mapping, RFLP and RAPD analysis



UVIbandmap

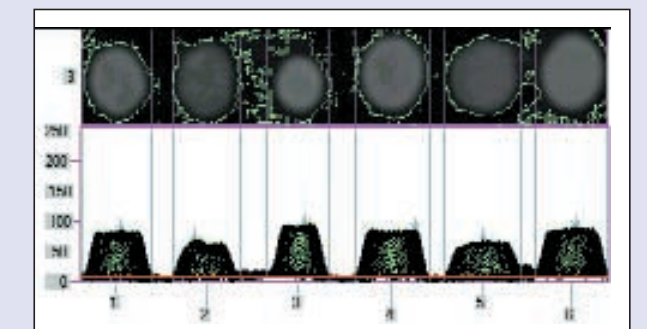
The complete all inclusive 1D package

- All the benefits of UVIband and UVImap at your fingertips
- 70+ functions
- The only 1D analysis software you will ever need



All UVIsoft software comes as standard on CD-ROM with comprehensive user manual

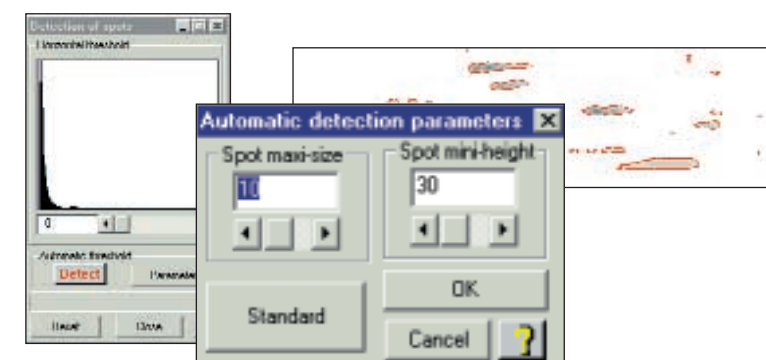
For more details about all software packages listed here, please visit our website: <http://www.uvitec.co.uk>



UVIsport

The inexpensive 2D alternative

- Comprehensive 2D analysis at a 1D price
- Automatic detection of 'matched' spots
- Gel comparison by spot movement, volume variations and presence/absence
- Comparison of up to 256 gels in one experiment
- Up to 9 parameter spot characterisation
- Searchable database for easy archiving and comparison

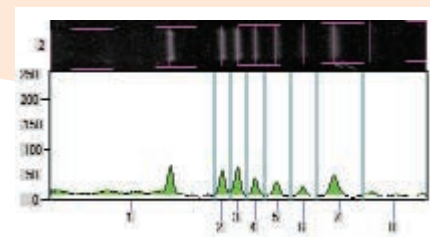
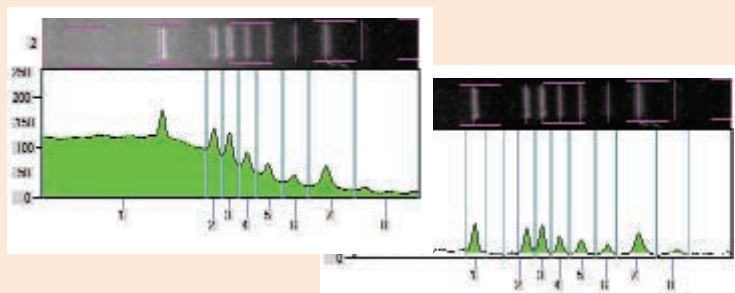
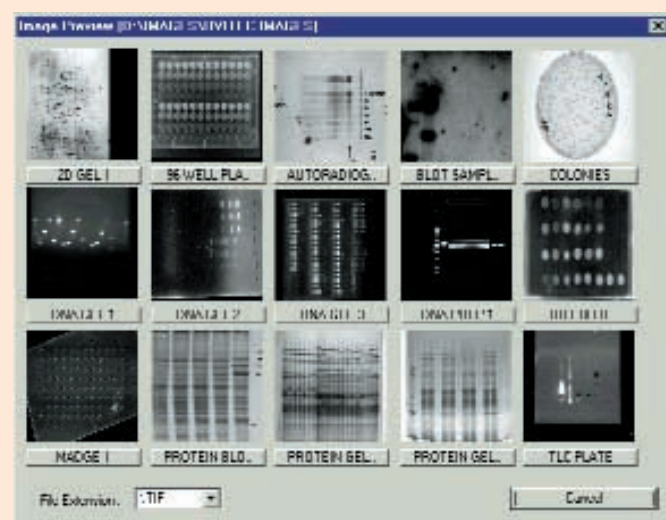


Ordering

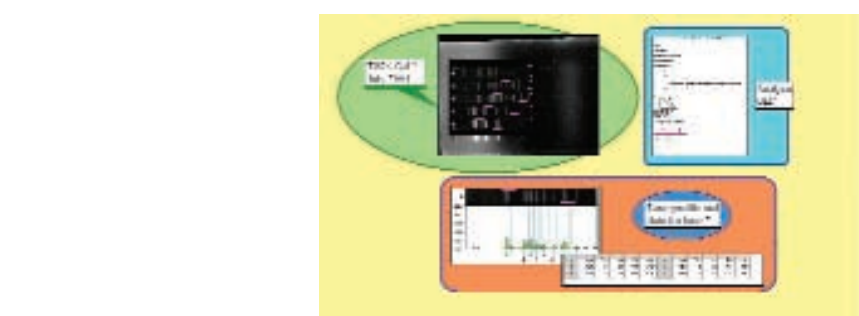
Title	Code	Title	Code
UVIband	UVIB	band + spot	UVIBS
UVImap	UVIM	map + spot	UVIMS
UVIsport	UVIS	bandmap + spot	UVIXS
UVIbandmap	UVIX		

uvisoft

gel analysis software



images from all analysis fields to be automatically "pasted" into a presentation or report along with explanatory text. The report can then be saved as a template, so the same report can be prepared from other data.



special features and benefits

In designing UVIsoft analysis software, we have thought of everything. As a result, all UVIsoft analysis packages are:

User-Friendly: every aspect of UVIsoft is designed with ease of use in mind. This includes the very first step of opening an image, which is facilitated by the ability to choose the file from a "thumbnail" image gallery.

Powerful: all UVIsoft analysis packages include the option of reliable, fully automatic background subtraction for band quantification and optional methods for correction of gel distortions during molecular weight calculations.

Flexible: Attractive as it may sound, "One Step" analysis places excessive reliance on automation and can detract from accurate gel or blot analysis. Analysis in UVIsoft packages is step-wise and at each analysis step, there is the facility for the user to check and (if necessary) edit the results of automatic analysis processes.

Versatile: In addition to the incredibly broad range of analysis functions available in UVIsoft, there are also functions to facilitate data presentation, reports and posters. The "Print Designer" function enables data tables plus

uvimeter

ultraviolet radiometers

UVItec RS radiometer 254 312 365nm (three models)

- Electronic case
- LCD display
- Analog output
- Zero drift
- Off/On/Hold switch

UV sensor (fixed)

- Silicon photo-electric cell for a direct measurement of the UV radiation. No need for conversion into visible light.
- Interference filter to select the appropriate UV band and to eliminate all other unwanted radiation.
- Non-sensitive to infra-red.
- No electronic components in the sensor to avoid any possible temperature disparity
- Quartz disc protection on cell filter
- Carbon shielded cable (1 metre)

UVImeter RX 003 radiometer with microprocessor

- Designed for operating at 254nm, 312nm and 365nm
- Independent sensor (supplied separately) for each wavelength
- Analog output on the rear panel for each wavelength
- 4 X 16 LCD display
- 4 'Alkaline' batteries R6/1.5V

Connections
Connector for 4.5V DC-200mA external stabilised power supply. RS232 output for computer (PC) (9600 baud – 8 bits – without parity). Analog output. Zero point adjustment. Connector of UV sensor

Keyboard
HOLD – Fixes the reading at a given time
MIN/MAX – Displays min and max intensities
ENTER – Displays the energy in J/cm² & the running time
CLEAR – Initialises the memory & resets min and max intensities

Technical characteristics
Electronic case
Intensity measurements
• Accuracy and linearity: ± 0.2%
• Range: 0 to 350 mW/cm²

Resolution
0.001 mW/cm² from 0.000 to 3.500 mW/cm²
0.01mW/cm² from 3.51 to 35.00 mW/cm²
0.1mW/cm² from 35.1 to 350.0 mW/cm²
Range changes automatically

Analog output
0 to 3.5V for 0 to 350 mW/cm²

Energy measurements
Accuracy: 1µJ/cm²
Range 0 to 99999 J/cm²

Resolution
0.0001 J/cm² from 0.0000 to 9.9999 J/cm²
0.001 J/cm² from 10.000 to 99.999 J/cm²
0.01 J/cm² from 100.00 to 999.99 J/cm²
0.1 J/cm² from 1000 to 9999.9 J/cm²
1 J/cm² from 10000 to 99999 J/cm²
Range changes automatically

Sensor accuracy:
± 5% by comparison with interchangeable radiometer calibrated to traceable standard

Sensor linearity: ± 0.5%
Temperature coefficient: ± 0.05%/C from 0 to 40°C

Interference filter
Half bandwidth (HBW): 12nm ± 2
Blocking range – Filter: 400 to 1200nm: 0.01%
Blocking range – Silicon cell: > 1200nm: 0%

For use in the following conditions:
Temperature: 0 to 50°C
Relative humidity: 30 to 60%

Ordering

Model No.	Description
RS 254	radiometer, short wave
RS 312	radiometer, mid wave
RS 365	radiometer, long wave
RX 003	radiometer
SX 254	sensor, short wave
SX 312	sensor, mid wave
SX 365	sensor, long wave



ultraviolet transilluminators

For the optimum visualisation of agarose or polyacrylamide gels, UVIttec offers what is probably the widest available range of ultraviolet transilluminators. The 'mini' range takes 8W tubes and can have filter sizes up to 21 x 26cm. With the standard sized range, filter sizes up to 20 x 40cm are possible. All models are of superb quality with stainless steel filter frames, longlife filters and highly polished 'ondulex' reflectors for ultimate efficiency. An adjustable UV blocking cover is included to protect the user from harmful UV. The range now includes electronic ballast technology as standard with the exception of the dual wavelength and the white light models. This new technology reduces flicker, provides instant switch on and allows dual intensity to be a standard feature.

Extensive range

There are more than 30 models in the entire UVIttec range, including two sizes of unit (mini and standard), five sizes of viewing filter and three different wavelength ranges. Mini units (BXT, BTS) have a small footprint of 34 x 26cm while standard units (SXT, STS) have a footprint of 47 x 33cm. Filter sizes of 15 x 15cm, 20 x 20cm and 21 x 26cm are available for mini units while standard unit filters can be up to 20 x 40cm. Wavelength ranges of maximum 254nm, 312nm and 365nm are available as well as dual wavelength and white light models.

- Widest range available
- Superb quality
- Electronic ballast now as standard (exception of dual wavelength & white light)
- Stainless steel filter frames and longlife filters
- Dual wavelength combinations
- Adjustable UV blocking cover



Highest performance

The highly polished 'ondulex' reflectors positioned behind the UV tubes give the highest possible efficiency of UV output, superior to that achieved by plain aluminium. The filter material is also chosen for maximum transmission of the chosen wavelength range as well as long life usage (unlimited at 365 and 312nm, up to 3000 hours at 254nm).

Designed for rough treatment

The high quality, stainless steel filter frame is resistant to chemicals and scratching. The epoxy painted body is also chemical resistant and the unit design eliminates leakage of liquids into the interior.

Facilitates gel handling

The transfer and positioning of wet gels onto the transilluminator surface is facilitated by the smooth, scratch resistant stainless steel filter frame and the highly polished filter surface.



The angle-adjustable UV blocking cover offers hands-free protection to users from the harmful UV rays.

Space saving

The mini units offer efficient, high-powered UV illumination of gels and blots up to 21 x 26cm in size, while having a footprint of only 34 x 26cm. What is more, the mini sized dual wavelength models allow illumination in two different wavelengths from a single compact unit. A dual UV/white light model is also available for illumination of fluorescent and visible gels of up to 20 x 20cm.

ultravue transilluminator



The use of special filter material in the Ultravue transilluminator greatly enhances contrast, making fluorescent bands easier to see both by eye and with documentation systems such as UVIsave, UVIdoc and UVIpro.

The special filter eliminates visible light output thereby reducing the need for filtering to isolate the fluorescent band signal.

Enhanced viewing with ethidium and sybr® stains

Gels stained both with ethidium bromide and with sybr® green are viewed by eye more easily on the Ultravue transilluminator. Since background light is eliminated, no filtering is required, and no signal is lost. The dark, uniform filter surface provides a high contrast background enabling viewing of even the faintest bands.

Enhanced documentation

The absence of visible background light and minimal IR output from the Ultravue transilluminator enable broad transmission camera filters to be used. This ensures that maximum transmission of the fluorescent signal is always achieved. For sybr® green documentation, Ultravue is preferable to visible (blue light) illumination in which a large part of the signal is always lost while filtering out the blue background light.

Ordering

Ultravue Transilluminator

Model No.	Description	Filter (cm)	Tube	Wavelength (nm)
UTX 20M	Hi/Lo intensity	20 x 20	6 x 8W	312

UVIvue Transilluminators (standard size)

SXT 20S	Hi/Lo intensity	20 x 20	6 x 15W	254
SXT 20M	Hi/Lo intensity	20 x 20	6 x 15W	312
SXT 26S	Hi/Lo intensity	21 x 26	6 x 15W	254
SXT 26M	Hi/Lo intensity	21 x 26	6 x 15W	312
SXT 35S	Hi/Lo intensity	20 x 35	6 x 15W	254
SXT 35M	Hi/Lo intensity	20 x 35	6 x 15W	312
SXT 35L	Hi/Lo intensity	20 x 35	6 x 15W	365
SXT 40S	Hi/Lo intensity	20 x 40	6 x 15W	254
SXT 40M	Hi/Lo intensity	20 x 40	6 x 15W	312

STS 20WL	Single intensity, dual wavelength	20 x 20	6 x 8W 2 x 8W	365 white light
STS 20WS	Single intensity, dual wavelength	20 x 20	6 x 8W 2 x 8W	254 white light
STS 20WM	Single intensity, dual wavelength	20 x 20	6 x 8W 2 x 8W	312 white light
STS 35W	Single intensity	20 x 35	4 x 8W	white light

UVIvue Transilluminators (mini size)

BXT 15S	Hi/Lo intensity	15 x 15	4 x 8W	254
BXT 15M	Hi/Lo intensity	15 x 15	4 x 8W	312
BXT 15L	Hi/Lo intensity	15 x 15	4 x 8W	365
BTS 20W	Single intensity	20 x 20	2 x 8W	white light
BXT 20S	Hi/Lo intensity	20 x 20	6 x 8W	254
BXT 20M	Hi/Lo intensity	20 x 20	6 x 8W	312
BXT 20L	Hi/Lo intensity	20 x 20	6 x 8W	365
BXT 26S	Hi/Lo intensity	21 x 26	6 x 8W	254
BXT 26M	Hi/Lo intensity	21 x 26	6 x 8W	312
BTS 20LM	Single intensity, dual wavelength	20 x 20	6 x 8W 5 x 8W	365 312
BTS 20MS	Single intensity, dual wavelength	20 x 20	6 x 8W 5 x 8W	312 254
BTS 20LS	Single intensity, dual wavelength	20 x 20	6 x 8W 5 x 8W	365 254
BTS 26LM	Single intensity, dual wavelength	21 x 26	6 x 8W 5 x 8W	365 312
BTS 26MS	Single intensity, dual wavelength	21 x 26	6 x 8W 5 x 8W	312 254
BTS 26LS	Single intensity, dual wavelength	21 x 26	6 x 8W 5 x 8W	365 254

uvilite

ultraviolet lamps

A very wide range of ultraviolet lamps from low power hand held models to high intensity units is available. There are filtered lamps in three wavelengths for use in fluorescent techniques and unfiltered lamps in both long and short (germicidal) wavelengths. All incorporate an extruded, anodised aluminium housing and a specially designed unique profile has been developed for the hand held lamps. The operator friendly shape permits lamps to be held easily with gloved hands.

Filtered lamps

These highly efficient, well designed lamps are produced in three wavelengths: 254, 312 and 365nm and dual wavelength combinations. Power ranges from a single 4W tube up to two 15W tubes.

Applications include:

Short wavelength (254nm)

Fluorescence techniques, fluorochemistry, mineralogy, photopolymerisation, mutation studies, toxicology.

Mid wavelength (312nm)

Electrophoresis gel viewing.

Long wavelength (365nm)

TLC plate viewing, fluorochemistry, food inspection, quality control, titration, pesticide analysis, mineralogy.

Ordering UVilite filtered UV lamps

Model No.	Filter (mm)	Tube (mm)	Wavelength (nm)	Intensity at 15cm $\mu\text{W}/\text{cm}^2$
LF 104L	50 x 75	1 x 4W	365	400
LF 104S	50 x 75	1 x 4W	254	340
LF 204LS	50 x 75	1 x 4W	365	350
		1 x 4W	254	265
LF 106L	50 x 150	1 x 6W	365	700
LF 106S	50 x 150	1 x 6W	254	710
LF 106M	50 x 150	1 x 6W	312	680
LF 206LM	50 x 150	1 x 6W	312	580
		1 x 6W	365	610



LF 206MS	50 x 150	1 x 6W	312	580
		1 x 6W	254	400
LF 206LS	50 x 150	1 x 6W	365	610
		1 x 6W	254	400
LF 215L	80 x 300	2 x 15W	365	2300
LF 215S	80 x 300	2 x 15W	254	1780
LF 215M	80 x 300	2 x 15W	312	2200
LF 215LM	80 x 300	1 x 15W	365	1350
		1 x 15W	312	1330
LF 215MS	80 x 300	1 x 15W	312	1330
		1 x 15W	254	930
LF 215LS	80 x 300	1 x 15W	365	1350
		1 x 15W	254	930

High intensity lamps

Incorporating cold cathode quartz grid lamps, housed in anodised aluminium extrusion and with the same highly efficient ondulex reflector as filtered lamps. The power supply unit is remote from the lamp head in a separate metal package. Grid lamps produce high intensity, very consistent, short-wavelength (254nm) ultraviolet illumination. The 100W units are available fitted with longlife filters or to special order without filter for germicidal applications.

Applications include:

Biotechnology – mutagenesis, photopolymerisation, toxicology, mycology, sterilisation.

Ordering high intensity lamps

Model No.	Filter (mm)	Wavelength (nm)	Intensity $\mu\text{W}/\text{cm}^2$
LF 180S	70 x 300	254	3400

unfiltered ultraviolet lamps

Germicidal lamps

Widely used in medical and scientific research laboratories as well as in electronics and the food and beverage industries. Areas that must be kept free from bacterial contamination may be irradiated with UVitec germicidal lamps, provided safeguards are in place to protect operators.

The same range of lamps is available with either BL or BLB long-wavelength tubes:

BL (Blacklight) tubes are actinic ultraviolet type and include a white light component in the output.



Germicidal radiation required for bacterial destruction

Bacteria	Energy in mW-sec/cm ² Sterilisation up to		Bacteria	Energy in mW-sec/cm ² Sterilisation up to	
	90%	99%		90%	99%
Bacillus anthracis	4.52	9.04	Pseudomonas fluorescens	3.50	7.00
S. enteritidis	4.00	8.00	S. typhimurium	8.00	16.00
B. megatherium sp.(veg.)	1.30	2.60	Sarcina lutea	19.70	39.40
B. paratyphosus	3.20	6.40	Serratia marcescens	2.42	4.84
B. subtilis	7.10	14.20	Dysentery bacilli	2.20	4.40
B. subtilis spores	12.00	24.00	Shigella paradysenteriae	1.68	3.36
Corynebacterium diphtheriae	3.37	6.74	Spirillum rubrum	4.40	8.80
Eberthella typhosa	2.14	4.28	Staphylococcus albus	1.84	3.68
Escherichia coli	3.00	6.00	Staphylococcus aureus	2.60	5.20
Micrococcus candidus	6.05	12.10	Streptococcus hemolyticus	2.16	4.32
Micrococcus sphaeroides	10.00	20.00	Streptococcus lactis	6.15	12.30
Neisseria catarrhalis	4.40	8.80	Streptococcus viridans	2.00	4.00
Phytomonas tumefaciens	4.40	8.80			
Proteus vulgaris	2.64	5.28			

Note: The above table is only intended as a guide to bacterial destruction

Applications for BL lamps include:

Polymer curing, adhesive curing, dermatology, pharmacology, photoresist exposure.

BLB (Blacklight Blue) tubes are self-filtered cobalt glass – to reduce the visible light component and increase fluorescent contrast.

Applications for BLB lamps include:

Non-destructive testing, quality control, invisible coding/markings, counterfeit note detection, rodent contamination detection, readmission control, aflatoxin detection, signature verification.

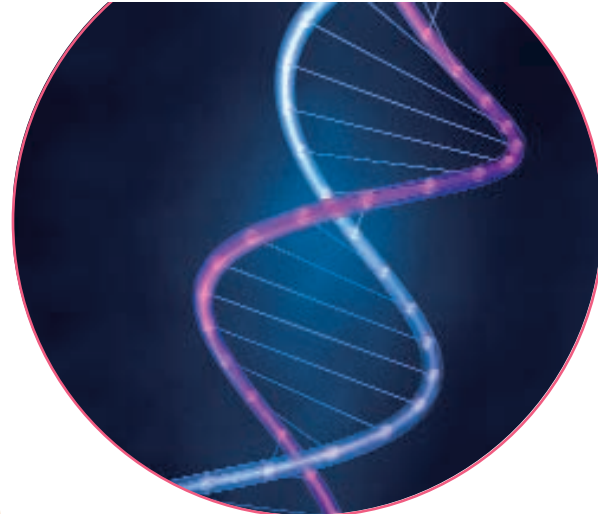
Ordering

UVilite Unfiltered UV germicidal lamps 254nm			UVilite Unfiltered UV longwave lamps 365nm		
Model	No. Tubes	Intensity $\mu\text{W}/\text{cm}^2$	Model	No. Tubes	Intensity $\mu\text{W}/\text{cm}^2$
LI 206G	2 x 6W	1400*	LI 206BL	2 x 6W BL	1215*
LI 208G	2 x 8W	1800*	LI 208BL	2 x 8W BL	1400*
LI 215G	2 x 15W	76	LI 215BL	2 x 15W BL	108
LI 315G	3 x 15W	95	LI 315BL	3 x 15W BL	147
LI 220G	2 x 20W	95	LI 220BL	2 x 20W BL	129
LI 320G	3 x 20W	119	LI 320BL	3 x 20W BL	177
LI 230G	2 x 30W	152	LI 230BL	2 x 30W BL	228
LI 330G	3 x 30W	191	LI 330BL	3 x 30W BL	312
LI 240G	2 x 40W	157	LI 240BL	2 x 40W BL	302
LI 340G	3 x 40W	219	LI 340BL	3 x 40W BL	413
			LI 206BLB	2 x 6W BLB	1120*
			LI 208BLB	2 x 8W BLB	1300*
			LI 215BLB	2 x 15W BLB	100
			LI 315BLB	3 x 15W BLB	136
			LI 220BLB	2 x 20W BLB	119
			LI 320BLB	3 x 20W BLB	163
			LI 230BLB	2 x 30W BLB	210
			LI 330BLB	3 x 30W BLB	288
			LI 240BLB	2 x 40W BLB	279
			LI 340BLB	3 x 40W BLB	381

Intensities all at 1m except * at 15cm

uvilink

ultraviolet crosslinker



- Programmable microprocessor control
- UV energy monitored automatically
- Compact footprint with large interior
- Observation window – UV blocking
- Membrane keypad operation
- Clear LED display
- Safety interlocked

Simple yet versatile

The UVilink CL 508 Crosslinker is a fully microprocessor controlled unit especially designed to give the best possible results when binding nucleic acids to membranes. The correct ultraviolet dosage can be set using the membrane switch keypad, in either energy units (Joules) or time (seconds). There are nine possible presets for energy exposure and nine presets for time exposure as well as manual user selection in either units.

Superb quality results in less time

Ultraviolet crosslinking of DNA and RNA to nylon or nitrocellulose membranes is now well established as a laboratory technique and there is considerable published work on the topic. Time saved from UV crosslinking over the conventional vacuum oven baking method is considerable – seconds or minutes as opposed to hours.

Small and safe without compromising efficiency

UVilink CL 508 provides a compact unit occupying minimum bench space with a footprint of only 350 x 350 mm and a spacious interior chamber of 270 x 300 x 140 mm. As with all UVIttec products, safety is a major consideration so the CL508 door is safety interlocked against opening during operation and the observation window in the door is ultraviolet blocking. The ultraviolet energy is continuously monitored by an accurate microprocessor controlled photo feedback system which compensates for variation in output from the UV sources. In this way consistency of operation and maximum efficiency are maintained.

Applications include:

- Fixing of nucleic acids to nylon or nitrocellulose membranes
- Southern or Northern blotting, dot blotting and colony or ple lifts
- Elimination or reduction of PCR contamination
- Nicking ethidium bromide stained DNA in agarose gels
- Gene mapping for creating cleavage inhibiting thymine dimers
- Screening RecA mutation
- Ultraviolet curing of polymers, adhesives and inks
- Ultraviolet sterilisation

Ordering

Model	Description	Wavelength (nm)
CL 508S	Crosslinker shortwave	254
CL 508M	Crosslinker midrange	312
CL 508L	Crosslinker longwave	365

uvicab

ultraviolet viewing cabinets



CV 415 cabinet

Professional unit for effective viewing with power intensity unequalled in this field.

Features

- Incorporates 4 x 15Watt UV tubes plus one 40Watt white light bulb
- Any single or dual wavelength combination of 254, 312 and 365nm wavelengths
- Easy control switch operation for each wavelength
- Versatile: simply change the tubes when a new wavelength is required
- Removable base panel enabling positioning above a standard transilluminator
- Viewing port with UV absorbing filter

Applications of CV cabinets

- Reading chromatograms (paper or TLC)
- Fluorescent analysis in Biology, Chemistry and Forensics
- Industrial and electronic quality control
- Can also be used for applications in Geology and Mineralogy

CV006 cabinet

An economic solution to laboratory inspection of fluorescent samples.

Features

- Compact, lightweight, versatile and efficient
- Can hold one or two UVlite, 6W UV lamps
- Choose from 254, 312 or 365nm wavelength
- Strong, lightweight design with black curtain
- Viewing port with UV absorbing filter

Ordering

Model	Description	Tubes	nm	μW/cm ²
CV 415LL	cabinet, long wave	4 x 15W	365	2000
CV 415SS	cabinet, short wave	4 x 15W	254	1750
CV 415MM	cabinet, mid wave	4 x 15W	312	1800
CV 415 LM	cabinet, long/mid	2 x 15W 2 x 15W	365 312	1050 970
CV 415MS	cabinet, mid/short	2 x 15W 2 x 15W	312 254	970 900
CV 415LS	cabinet, short/long	2 x 15W 2 x 15W	254 365	1050 900
CV 015W	cabinet, white light	40W bulb	white light	
CV006	mini cabinet, 1 or 2 6W lamps (not supplied)			

All versions of CV 415 fitted with 1 x 40Watt white light bulb

replacement ultraviolet tubes

UVItec can supply a full range of ultraviolet tubes to fit most available models of UV transilluminator and UV lamp, plus other UV devices. We specialise in rapid delivery from extensive stocks. We also offer discounts for purchase of multiple (5+) tubes.

In addition to those listed in the table, we can also supply larger UV tubes of up to 40W including short wave (254nm) germicidal tubes.

Please contact us for details, or see our web site for a complete list.

Ordering

Model No.	Output (Watts)	Wavelength
T4L	4W	365
T4C	4W	254
T4LN	4W	365 BLB
T6L	6W	365
T6C	6W	254
T6M	6W	312
T6LN	6W	365 BLB
T6LC	6W	365/254
T8L	8W	365
T8C	8W	254
T8M	8W	312
T8LN	8W	365 BLB
T15L	15W	365
T15C	15W	254
T15M	15W	312
T15LN	15W	365 BLB



ultraviolet safetywear

Safetywear to protect the eyes and face from harmful ultraviolet rays is recommended to all operators of ultraviolet equipment and patients undergoing PUVA treatment. Cover spectacles and Face Shields are specially produced for UVItec by Bollé, the leading European eye safetywear manufacturer.

- Comfortable to wear
- Lightweight, unobtrusive design
- Guaranteed to completely block ultraviolet radiation below 400nm
- CE marked

Ordering

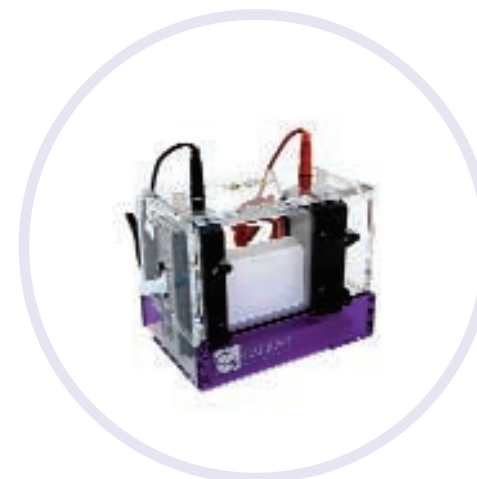
SS350	UV safety cover-specs
SG550	UV safety goggles
SF850	UV face shield

uvisafe



uvigene

High quality thermal cycler for 0.2 or 0.5ml microtubes



uvipage

uvisub

Professional vertical and horizontal electrophoresis equipment

for more information on the above products

visit our website at www.uvitec.co.uk

call us **+44 (0)1223 568060** email uvi@uvitec.co.uk