

EtBr filter connects to the camera (other filters available)

Entry-Level digital color system for fluorescence and colorimetric imaging

The digital color camera connects directly to your computer loaded with UVP's exclusive image capture/camera control software.



Camera mounts to the top of the lightweight hood enclosure under the protective cover

View gels through the UV blocking viewport

Lightweight door opens for access to the transilluminator surface

Exclusive software loads onto your computer to control image capture and camera functions

- Basic and advanced capture modes
- Preset zoom and sample sizes
- Templates for multiple users and experiments
- Save options: tiff, jpeg, more ...

Large format, 25-watt High Performance UV Transilluminator (order separately)

System Components

- Hood enclosure, lightweight with access door
- Viewport, UV blocking
- UV Transilluminator (Order separately)
- Emission filter: EtBr, 55mm (others available)
- Digital color camera (Digi Camera)
- Capture software (Windows 2000, XP Pro)

For fast, accurate analysis, use the optional Doc-ItLS software

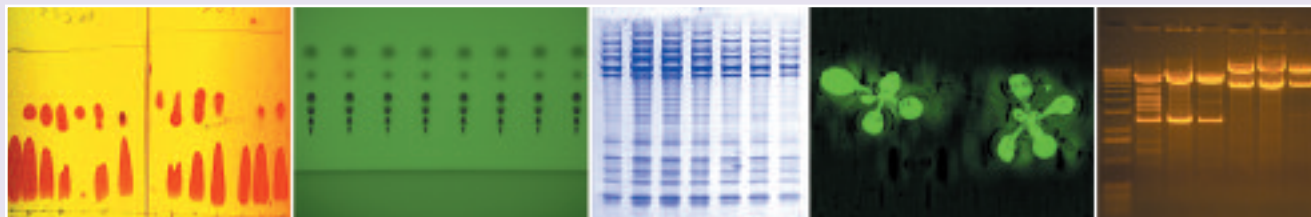


To use a benchtop UV transilluminator with the DigiDoc-It, order the DigiDoc-It and drawer assembly

DigiDoc-It BioImaging System
MultiDoc-It BioImaging System
ChromaDoc-It BioImaging System

Digi Camera

Digi Camera Megapixel digital color camera for fluorescence samples and TLC color imaging. Camera can be used outside the system for other laboratory applications. Specifications: 5.1 megapixels, resolution up to 3624 x 2448



MultiDoc-It Imaging System



Multiple application digital color system for fluorescence, TLC and colorimetric imaging

Gel viewer, UV blocking, for viewing samples



Digital color camera with EtBr filter mounts inside the darkroom

For TLC imaging, mount UV lamps (order separately) for epi UV illumination

Darkroom features sturdy metal construction and wide access door; UV shuts off when the door is open

UV Transilluminator included (select from a large variety of benchtop models); for TLC imaging order a MultiDoc-It without a transilluminator

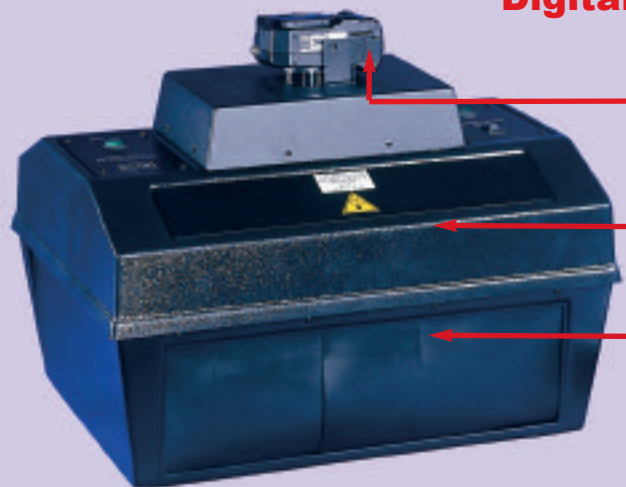
System Components

- Darkroom with wide access door, gel viewer window (UV blocking)
- UV Transilluminator
- Emission filter: EtBr, 55mm (TLC filter and others available)
- Digital color camera
- Capture software (Win 2000, XP Pro)

The digital camera connects directly to your computer loaded with UVP's exclusive image capture and camera control software. MultiDoc-It includes the same camera and software features as the DigiDoc-It system.

ChromaDoc-It Imaging System

Digital color system for TLC samples



Camera mounts to the top of the Chromato-Vue® UV cabinet

TLC filter included for capturing brilliant color images

Built-in overhead shortwave (254nm) and longwave (365nm) UV positioned on two sides of the cabinet for uniform UV illumination

Lightweight curtain blocks ambient light and protects the user from UV exposure

System Components

- Cabinet with access curtain
- Lighting: 254/365nm UV, White light
- Emission filter: TLC, 55mm
- Digital color camera
- Capture software (Windows 2000, XP Pro)

The digital camera connects directly to your computer loaded with UVP's exclusive image capture and camera control software. ChromaDoc-It includes the same camera and software features as the DigiDoc-It system. For full analysis capabilities, order the Doc-ItLS Software.