

**UVITEC**  
C a m b r i d g e

EXPAND YOUR TERRITORIES



**UVITEC**  
C a m b r i d g e

**GEL DOCUMENTATION**

# UVITEC

C a m b r i d g e

## AGENDA




Product roadmap.....	3
<b>Computer based system:</b>	
PLATINUM.....	5
XPLORER.....	6
ESSENTIAL.....	7
Specifications – Computer based system.....	8
Configuration – Computer based system.....	9
Software – Computer based system.....	10
<b>Stand-alone system:</b>	
UVIDOC.....	11
UVISAVE.....	12
Specifications – Stand-alone system.....	13
Configuration – Stand-alone system.....	14
Software – Stand-alone system.....	15





# UVITEC

C a m b r i d g e

## PRODUCT ROADMAP – COMPUTER BASED SYSTEM

<b><u>PLATINUM</u></b> <b>THE POWER MACHINE</b>	<b><u>XPLORER</u></b> <b>EXPAND YOUR TERRITORIES</b>	<b><u>ESSENTIAL</u></b> <b>ALL YOU NEED IS ME</b>
FLUORESCENCE COMPUTER BASED SYSTEM	FLUORESCENCE COMPUTER BASED SYSTEM	FLUORESCENCE COMPUTER BASED SYSTEM
		
<p>Massive specifications for the highest performance gel doc system</p> <p>Extreme 2 Megapixels            1 inch sensor            10 times optical zoom            Massive 16-bit imaging for enhanced dynamic</p> <p>Ideal for resolution demanding applications such as 1D quantification, 2D gel, biofluorescence</p> <p>FireWire super-fast connection</p> <p>“One touch” fully automated image acquisition program</p>	<p>The best lab standard</p> <p>1,4 Megapixels            2/3 inch sensor            Giant pixel size            6 times optical zoom            Massive 16-bit imaging for enhanced dynamic</p> <p>Ideal for documentation, publication and quantification</p> <p>FireWire super-fast connection</p> <p>“One touch” fully automated image acquisition program</p>	<p>The system which fits your budget</p> <p>0,5 Megapixels            6 times optical zoom            8-bit imaging</p> <p>Ideal for publication and routine documentation</p> <p>PCI fast connection</p>

## PRODUCT ROADMAP – STAND-ALONE SYSTEM

<b><u>UVIDOC</u></b> <b>THE ALL INCLUSIVE STAND-ALONE</b>	<b><u>UVISAVE</u></b> <b>INSTANT &amp; INSTINCTIVE</b>
FLUORESCENCE STAND-ALONE SYSTEM	FLUORESCENCE STAND-ALONE SYSTEM
	
<p>The stand alone with computer performance</p> <p>Massive 12-bit imaging for enhanced dynamic 6 times optical zoom</p> <p>Ideal for both quantification and publication Network capability Internal memory USB Flash reader TIFF or JPEG format Saturation monitoring of the live image Read a saved image</p>	<p>As simple as affordable</p> <p>8-bit imaging 6 times optical zoom</p> <p>Ideal for publication and routine imaging Compact-Flash media drive TIFF format Use with any transilluminator</p>

HARDWARE



PLATINUM D77

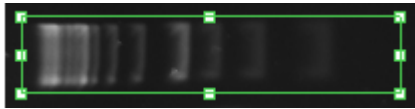


PLATINUM D55

## THE POWER MACHINE

### Massive specifications for the highest performance gel doc system

- Highest performance gel doc systems available
- 2 Megapixels / FireWire connection
- Massive 16-bit performance (65 536 grey levels)
- 1 inch sensor: extreme sensitivity for the faintest fluorescence sample
- Dynamic range up to 4.8 orders of magnitude
- 10 times optical zoom
- Patent pending UVI-PURE technology available
- Superb quality camera filter optimised for ethidium bromide
- "One touch" fully automated image acquisition program
- Customise your own system with our wide variety of darkrooms & options
- Biofluorescence and multiplexing ready



Platinum high resolution imaging enables the user to see more details on the gel and improves analysis accuracy



Low resolution system contains less information



Zoom X5: Resolution means more quantification data



Zoom X5: Low resolution means poor quantification data

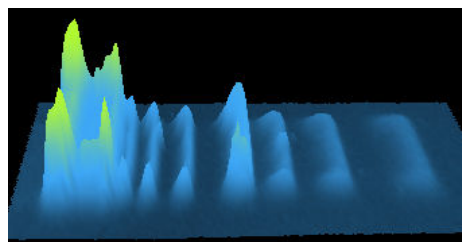


Image as understood by the computer: high precision detail

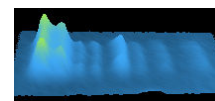


Image as understood by the computer: low precision

## HARDWARE



XPLORER D77

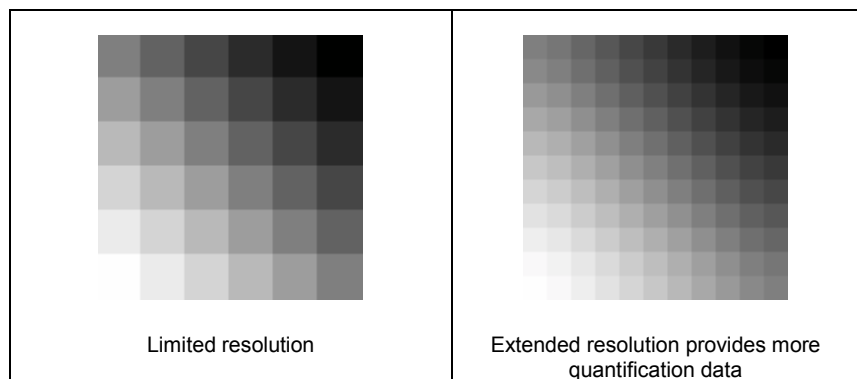


XPLORER D55

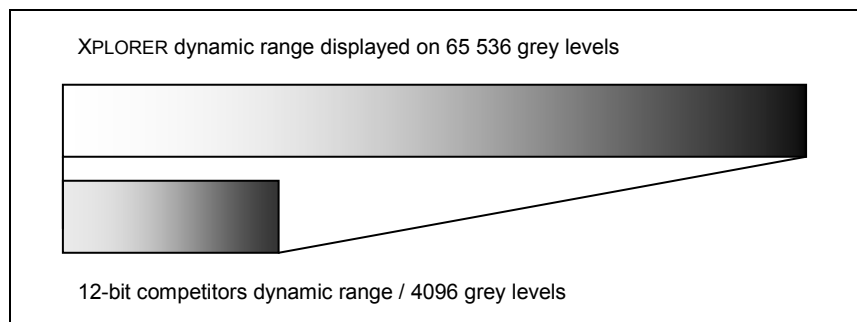
## EXPAND YOUR TERRITORIES

### 1.4 megapixels – 16-bit XPLORER system

The XPLORER is a 1.4 megapixels gel-documentation system ideal for documentation, publication and quantification. The very high resolution provides more quantification data as the image contains more details.



The XPLORER is a 16-bit system, to be compared with 12-bit systems of our competitors. The dynamic range describes the ratio between the maximum and the minimum measurable light intensities. Light measurements are translated into digital values with precision measured by the bit depth. The XPLORER extended dynamic range provides more quantification data.



### Key features

- Massive 16-bit performance (65 536 grey levels) - 1.4 Megapixels
- 12 wavelength illumination options. Biofluorescence & multiplexing ready
- Patent pending UVI-PURE technology available
- Prominent pixel size
- Extreme sensitivity for the faintest fluorescence sample
- Suitable for both routine documentation & critical quantitative applications
- Versatile and upgradeable
- FireWire connection
- “One touch” fully automated image acquisition program
- Wide variety of darkrooms and options to tailor your own system and fit your budget
- Superb quality camera filter optimized for ethidium bromide

## HARDWARE



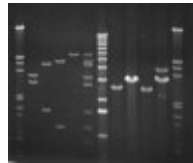
ESSENTIAL D77



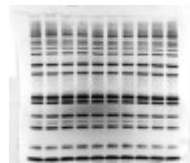
ESSENTIAL D55

## ALL YOU NEED IS ME

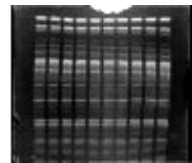
The system which fits your budget



Ethidium bromide gel



Protein gel



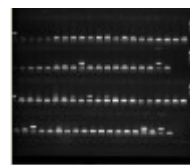
IEF



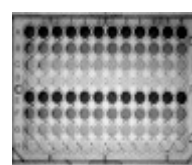
TLC



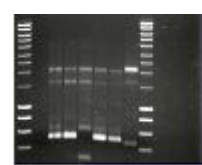
Colony plates



Multi-levels gels



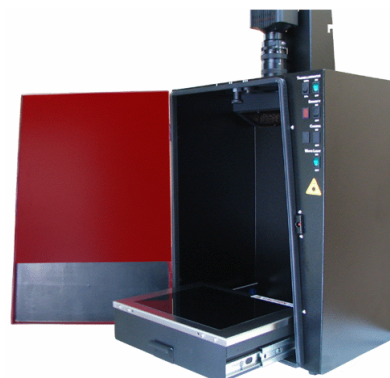
Microtitration plate



SYBR green gels





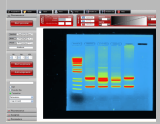
### Key features

- Sony scientific grade CCD camera
- Ideal for publication and routine documentation
- Patent pending UVI-PURE technology available
- Extreme ease of use
- Comprehensive range of models for any application or budget
- Ideal for a multi-user environment
- Good Laboratory Practice file
- Free software for image acquisition, annotation and quantification
- Robust steel and stainless steel construction
- Wide variety of darkrooms and options to tailor your own system and fit your budget
- Superb quality camera filter optimized for ethidium bromide









Essential D55 darkroom

# SPECIFICATIONS

	<b>PLATINUM</b> THE POWER MACHINE	<b>XPLORER</b> THE STANDARD	<b>ESSENTIAL</b> ALL YOU NEED IS ME
	FLUORESCENCE	FLUORESCENCE	FLUORESCENCE
			
	Massive specifications for the highest performance gel doc systems	The best lab standard	The system which fits your budget
<b>Camera &amp; optics</b> 	<p>2 Megapixels 16-bit performance (65 536 grey levels) Dynamic range: 4.8 OD Extreme sensitivity</p> <p>Scientific grade camera with electronically variable shutter speed 1 inch sensor Pixel size: 7.4 x 7.4 microns Patent pending UVI-VIEW camera technology</p> <p>FireWire super-fast connection 10 times optical zoom</p>	<p>1,4 Megapixels 16-bit performance (65 536 grey levels) Dynamic range: 4.8 OD Extreme sensitivity</p> <p>Scientific grade camera with electronically variable shutter speed 2/3 inch sensor Pixel size: 7.4 x 7.4 microns Patent pending UVI-VIEW camera technology</p> <p>FireWire super-fast connection 6 times optical zoom</p>	<p>0,5 Megapixels 8-bit performance</p> <p>Dynamic range: 3 OD Super high sensitivity</p> <p>Scientific grade camera with electronically variable shutter speed 1/2 inch sensor Pixel size: 4.6 x 4.6 microns</p> <p>PCI fast connection 6 times optical zoom</p>
<b>Software</b> 	<p>Platinum 1D software "One touch" fully automated image acquisition program Image enhancement, annotation and Illustration. 3 image analysis modules: - 1D Molecular weight (MW, volume, intensity, ...) - Colony counting - Distance calculation (RF, IEF, ...)</p>	<p>Xplorer 1D software "One touch" fully automated image acquisition program Image enhancement, annotation and Illustration. 3 image analysis modules: - 1D Molecular weight (MW, volume, intensity, ...) - Colony counting - Distance calculation (RF, IEF, ...)</p>	<p>Essential 1D software</p> <p>Image enhancement, annotation and Illustration. 3 image analysis modules: - 1D Molecular weight (MW, volume, intensity, ...) - Colony counting - Distance calculation (RF, IEF, ...)</p>
<b>Options</b>	<ul style="list-style-type: none"> <li>▪ Transilluminator UV surface: 26x21 or 20x20cm</li> <li>▪ UV-PURE transilluminator or standard transilluminator</li> <li>▪ Single or dual wavelength available</li> <li>▪ Manual or motorised zoom lens</li> <li>▪ UV to white light or UV to blue conversion screen</li> <li>▪ Advanced UVI-Band or UVI-BandMap software</li> </ul>	<ul style="list-style-type: none"> <li>▪ Transilluminator UV surface: 26x21 or 20x20cm</li> <li>▪ UV-PURE transilluminator or standard transilluminator</li> <li>▪ Single or dual wavelength available</li> <li>▪ Manual or motorised zoom lens</li> <li>▪ UV to white light or UV to blue conversion screen</li> <li>▪ Advanced UVI-Band or UVI-BandMap software</li> </ul>	<ul style="list-style-type: none"> <li>▪ Transilluminator UV surface: 26x21 or 20x20cm</li> <li>▪ UV-PURE transilluminator or standard transilluminator</li> <li>▪ Single or dual wavelength available</li> <li>▪ Manual or motorised zoom lens</li> <li>▪ UV to white light or UV to blue conversion screen</li> <li>▪ Advanced UVI-Band or UVI-BandMap software</li> </ul>

# CONFIGURATION

	<b><u>PLATINUM</u></b> THE POWER MACHINE	<b><u>XPLORER</u></b> THE STANDARD	<b><u>ESSENTIAL</u></b> ALL YOU NEED IS ME
	FLUORESCENCE	FLUORESCENCE	FLUORESCENCE
<b>D77 darkroom</b>			
	<p><b><u>PLATINUM D77</u></b></p> <ul style="list-style-type: none"> <li>▪ Say no to plastic! Steel and stainless steel darkroom. Epoxy-painted for chemical resistance. Black body imaging grade darkroom.</li> <li>▪ Smart control panel with UV security option. UV security timer. Build-in roll-out transilluminator.</li> <li>▪ Multi-position filter wheel to cover virtually all applications.</li> <li>▪ Biofluorescence and multiplexing ready.</li> </ul>	<p><b><u>XPLORER D77</u></b></p> <ul style="list-style-type: none"> <li>▪ Say no to plastic! Steel and stainless steel darkroom. Epoxy-painted for chemical resistance. Black body imaging grade darkroom.</li> <li>▪ Smart control panel with UV security option. UV security timer. Build-in roll-out transilluminator.</li> <li>▪ 12 wavelengths illumination option. 6 positions filter wheel to cover virtually all applications.</li> <li>▪ Biofluorescence and multiplexing ready – optional Epi-Bright Multiwavelength epi-illumination source.</li> </ul>	<p><b><u>ESSENTIAL D77</u></b></p> <ul style="list-style-type: none"> <li>▪ Say no to plastic! Steel and stainless steel darkroom. Epoxy-painted for chemical resistance. Black body imaging grade darkroom.</li> <li>▪ Smart control panel with UV security option. UV security timer. Build-in roll-out transilluminator.</li> <li>▪ 12 wavelengths illumination options. 6 positions filter wheel to cover virtually all applications.</li> <li>▪ Biofluorescence and multiplexing ready – optional Epi-Bright Multiwavelength epi-illumination source.</li> </ul>
<b>D55 darkroom</b>			
	<p><b><u>PLATINUM D55</u></b></p> <ul style="list-style-type: none"> <li>▪ Steel and stainless steel darkroom. Epoxy-painted for chemical resistance. Black body imaging grade</li> <li>▪ Build-in roll-out transilluminator. UV timer &amp; security switch.</li> <li>▪ White light epi-illumination. 2 position filter wheel.</li> </ul>	<p><b><u>XPLORER D55</u></b></p> <ul style="list-style-type: none"> <li>▪ Steel and stainless steel darkroom. Epoxy-painted for chemical resistance. Black body imaging grade</li> <li>▪ Build-in roll-out transilluminator. UV timer &amp; security switch.</li> <li>▪ White light epi-illumination. 2 position filter wheel.</li> </ul>	<p><b><u>ESSENTIAL D55</u></b></p> <ul style="list-style-type: none"> <li>▪ Steel and stainless steel darkroom. Epoxy-painted for chemical resistance. Black body imaging grade</li> <li>▪ Build-in roll-out transilluminator. UV timer &amp; security switch.</li> <li>▪ White light epi-illumination. 2 position filter wheel.</li> </ul>

# SOFTWARE

## EXPAND YOUR TERRITORIES



**Your gel on live!** Our live preview mode ensures quick and easy sample positioning and fine focus. Autofocus, autoexposure and video mode included!

**Getting the word out.** Highlight important features with text and symbols. The software helps you to annotate and illustrate your image.

**Create vibrant images.** Enhance your image with the extensive and readily available set of tools such as multiple colour channels, cropping and image additions.

**Need to quantify or measure?** Just add a calibration marker for reference or measure the volumes to determine the quantity with our simple 1-2-3 approach.

## HARDWARE



UVIdoc D55 LCD  
With motorised zoom

## THE ALL INCLUSIVE STAND-ALONE

### The stand-alone system with computer performance

- Enables you to do the job in the lab and download your image from the comfort of your office thanks to the easy-share network connection. This protects your office from ethidium bromide contamination that a USB key could cause. The UVIdoc just needs to be installed onto a local network, allowing fast and easy access to image already stored in the system's huge internal memory.
- The unique 12-bit performance delivers a high signal-to-noise ratio, producing perfect imaging for both quantification and publication.
- The complimentary UVIdoc 1D software provides a comprehensive set of image acquisition, enhancement and analysis tools. From molecular weight to colony counting, UVIdoc 1D is perfect for both analysis and gel annotation and editing.



Head of the UVIdoc LCD  
with extra large display and motorized zoom

### No more queues for documentation

Many laboratories have already discovered the benefits of the UVIdoc speed and simplicity. With zero learning curve and only a few buttons to press, a high quality printout or a saved image can be produced in seconds, making queuing for the darkroom a thing of the past.

The safety, speed and robustness of the UVIdoc have made it an essential tool in many teaching laboratories, the ultimate multi-user environment!

The saturation monitoring function means that UVIdoc can be used by researchers wishing to quantify the images while ensuring no loss of detail from image saturation.

HARDWARE



UVIsave system



UVIsave D55 system

## BASIC INSTANT

→ Get your instant printing in seconds. The unique design of UVIsave incorporates a user interface which is simplicity itself. Exposure time is varied by pressing a "+" button to increase and a "-" button to decrease. The exposure time ranges from 40ms to 10 seconds. All functions are accessed by a single push of a button.

### Gel watch

- Low cost documentation systems with Sony CCD scientific grade camera
- The world's simplest gel documentation system
- All the advantages of an instant photography system: speed, versatility & precision
- Ultra compact with no compromise on quality
- Giant 5.6" LCD screen
- Flexible – work with virtually any UV or white light transilluminator
- Print to video printer or save on CompactFlash™
- Unlike digital camera systems, set your exposure time & monitor the saturation
- 6 times optical zoom

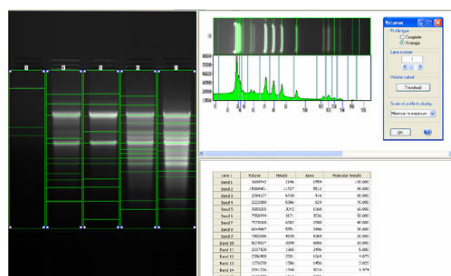


UVIsave control unit  
with extra large bright display

### For your gel only




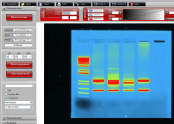
→ The saturation monitoring function means that UVIsave can be used by researchers wishing to quantify the images while ensuring no loss of detail from image saturation.

→ With zero learning curve and only a few buttons to press, a high quality printout or a saved image can be produced in seconds, making queuing for the darkroom a thing of the past.







Clear and straight forward complimentary UVIsave1D software

# SPECIFICATIONS

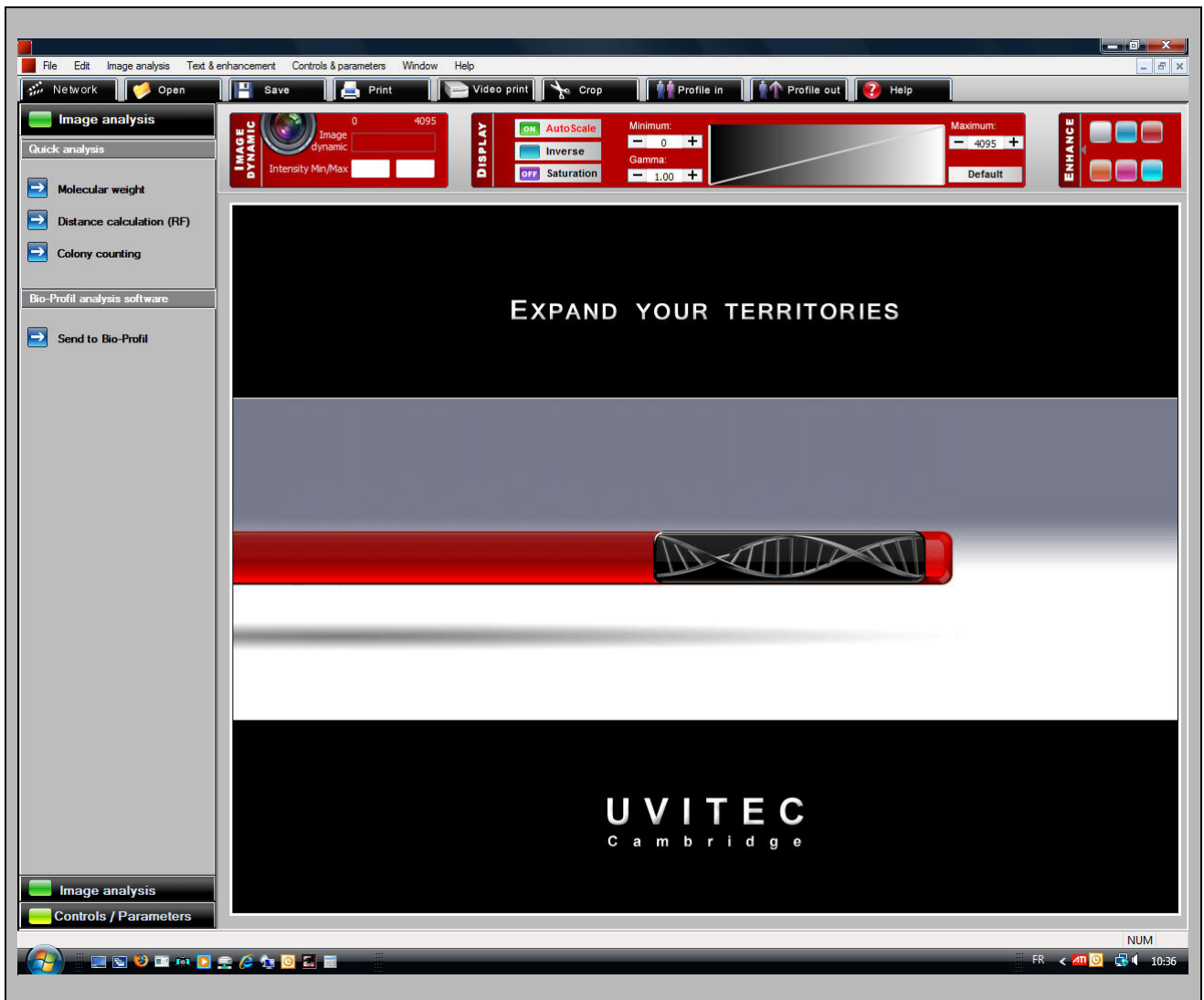
	<b>UVIdoc</b> THE ALL INCLUSIVE STAND-ALONE	<b>UVISAVE</b> INSTANT & INSTINCTIVE
	FLUORESCENCE	FLUORESCENCE
		
	The stand alone with computer performance	As simple as affordable
<b>Camera &amp; optics</b> 	Sony scientific grade camera with electronically variable shutter speed 0,5 Megapixels 12-bit performance (4 096 grey levels) Dynamic range: 4.0 OD Super-high sensitivity 6 times optical zoom	Sony scientific grade camera with electronically variable shutter speed 0,5 Megapixels 8-bit performance Dynamic range: 3 OD High sensitivity 6 times optical zoom
<b>Control unit</b>	Fine imaging incontrols Exposure time adjustment Saturation warning CompactFlash™ media drive Network connectivity	Super large built-in 5.6 inch TFT LCD display Exposure time adjustment Saturation warning CompactFlash™ media drive
<b>Software</b> 	UVIdoc 1D software Image enhancement, annotation and Illustration. 3 image analysis modules: - 1D Molecular weight (MW, volume, intensity, ...) - Colony counting - Distance calculation (RF, IEF, ...)	UVISave 1D software Image enhancement, annotation and Illustration. 3 image analysis modules: - 1D Molecular weight (MW, volume, intensity, ...) - Colony counting - Distance calculation (RF, IEF, ...)
<b>Options</b>	<ul style="list-style-type: none"> <li>▪ Transilluminator UV surface: 26x21 or 20x20cm</li> <li>▪ UV-PURE transilluminator or standard transilluminator.</li> <li>▪ Single or dual wavelength available</li> <li>▪ UV to white light or UV to blue conversion screen</li> <li>▪ Advanced UVI-Band or UVI-BandMap software</li> </ul>	<ul style="list-style-type: none"> <li>▪ Transilluminator UV surface: 26x21 or 20x20cm</li> <li>▪ UV-PURE transilluminator or standard transilluminator.</li> <li>▪ Single or dual wavelength available</li> <li>▪ UV to white light or UV to blue conversion screen</li> <li>▪ Advanced UVI-Band or UVI-BandMap software</li> </ul>

# CONFIGURATION

	<b>UVIDOC</b> THE ALL INCLUSIVE STAND-ALONE	<b>UVISAVE</b> INSTANT & INSTINCTIVE
	FLUORESCENCE	FLUORESCENCE
		
	<p><b><u>UVIDOC D55 LCD</u></b></p> <ul style="list-style-type: none"> <li>▪ Motorised scientific zoom lens. Extra large LCD display. Integrated imaging control unit.</li> <li>▪ Say no to plastic! Steel and stainless steel darkroom. Epoxy-painted for chemical resistance. Black body imaging grade darkroom.</li> <li>▪ Smart control panel with UV security option. UV security timer. Build-in roll-out transilluminator. Multi- positions filter wheel to cover virtually all applications</li> </ul>	<p><b><u>UVISAVE HOOD</u></b></p> <ul style="list-style-type: none"> <li>▪ Thermoformed hood / works with virtually any transilluminator.</li> </ul>
		
	<p><b><u>UVIDOC D55 XD</u></b></p> <ul style="list-style-type: none"> <li>▪ High resolution video monitor (optional). Integrated imaging control unit.</li> <li>▪ Say no to plastic! Steel and stainless steel darkroom. Epoxy-painted for chemical resistance. Black body imaging grade darkroom.</li> <li>▪ Smart control panel with UV security option. UV security timer. Build-in roll-out transilluminator. Multi- positions filter wheel to cover virtually all applications.</li> </ul>	<p><b><u>UVISAVE D55</u></b></p> <ul style="list-style-type: none"> <li>▪ Steel and stainless steel darkroom. Epoxy-painted for chemical resistance. Black body imaging grade.</li> <li>▪ Build-in roll-out transilluminator. UV timer &amp; security switch.</li> <li>▪ White light epi-illumination. 6 positions filter wheel.</li> </ul>

# SOFTWARE

## EXPAND YOUR TERRITORIES



**Getting the word out.** Highlight important features with text and symbols. The software helps you to annotate and illustrate your image.

**Create vibrant images.** Enhance your image with the extensive and readily available set of tools such as multiple colour channels, cropping and image additions.

**Need to quantify or measure?** Just add a calibration marker for reference or measure the volumes to determine the quantity with our simple 1-2-3 approach.