

Century Task

Century – a comprehensive range of office task chairs fitted with variable back rake operated by a lever and back height adjustment. A selection of other seat actions are available, please see extras.



Century Task (Medium Back)



Century Task (Medium Back) Armchair



Century Task (High Back)



Century Task (High Back)
with optional Adjustable Arms

Overall dimensions in millimetres

Metreage	Width	Depth	Height	Seat Hgt
Century Task (Medium Back)				
0.7	480	500	900	465+120
Century Draughtsman				
0.7	480	500	900	540+180
Century Task (Medium Back) Armchair				
0.7	580	500	900	465+120
Century Task (High Back)				
0.7	480	500	1060	465+120
Century Task (High Back) Armchair				
0.7	580	500	1060	465+120
Century Side Chair				
0.7	520	500	900	465
Century Armchair				
0.7	580	500	900	465

Extras:- Adjustable arms for task chairs, Synchro Action, Independent seat and back adjustment, Memory foam seat, Aluminium base, Seat slider for task chairs, Inflatable lumbar.



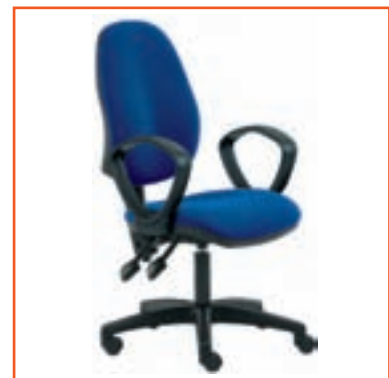
Century Draughtsman



Century Armchair



Century Side Chair



Century Task (High Back) Armchair

Why the TechnoChair programmes?

The working requirements of industrial and technical environments introduce specific demands that are not often encountered in the office. Seating in these environments must not introduce hazards to the safety of the people or the working process. There is a need to ensure good ergonomic adjustment and support for the operator for industrial and technical applications.

TechnoChair seating incorporates a build standard that satisfies the needs of function, adjustment and comfort. Every component and design feature adds value and can be configured differently to suit the specific requirements of a wide spectrum of specialised applications.

With a full range of options and accessories TechnoChair is the most comprehensive range of industrial and technical seating available. Whatever the requirement, TechnoChair offers the optimum solution.



ISO 14644: Part 1-Class 4 (which replaces the old Federal Standard 209E)

Glides or Castors

Safety at work is paramount! Free wheeling castors often present a safety hazard on hard floor surfaces and should only be considered for low height chairs on carpeted flooring. Low height chairs are fitted with 'brake unloaded soft wheel castors' as standard although glides are available. High and intermediate chairs are fitted with glides as standard. Note: responsibility is not accepted for injuries resulting from high and intermediate chairs where castors have been specified.

Air Filter

A high efficiency particle filter of type P3 is fitted as standard to all sterile and ESD cleanroom chairs. The filter satisfies the requirements of European Standard EN143 and is positioned on the underside of the seat so that it is protected from damage and will prevent migration of particles from the seat into the controlled area in accordance with the International Standard

Colours available in ESD fabric by Camira

Juniper Corinth Clipper Cobalt Twilight Bordeaux Anthracite Charcoal Black



Industrial and technical environment requirements

To help with specifying the most suitable seating for your requirements, the symbols below are shown alongside the seating appropriate for the areas indicated. Where the 'Hepa filter' symbol is shown it indicates that those chairs are fitted with the filter as standard.



HEPA filter



Electronics cleanroom



Sterile hygiene



Industrial technical

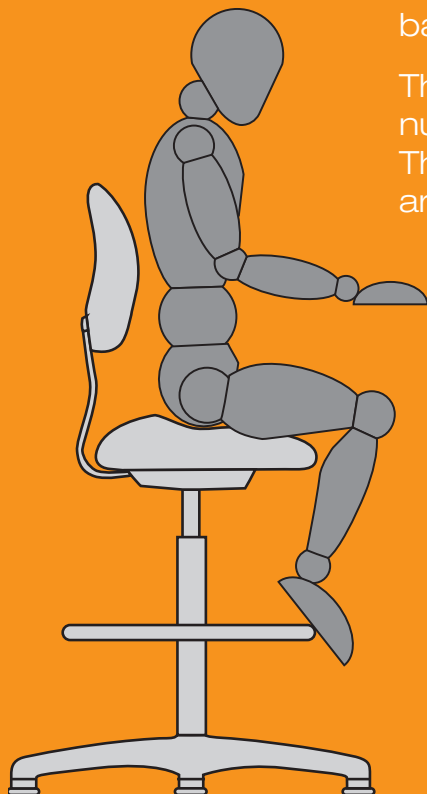


Laboratory

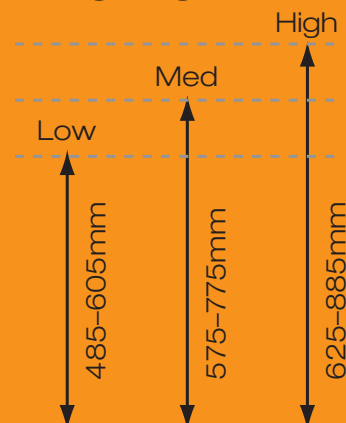
Selecting seat and working height

It is important to decide on the most appropriate sitting and working height required, this decision should be based on reviewing the diagram below.

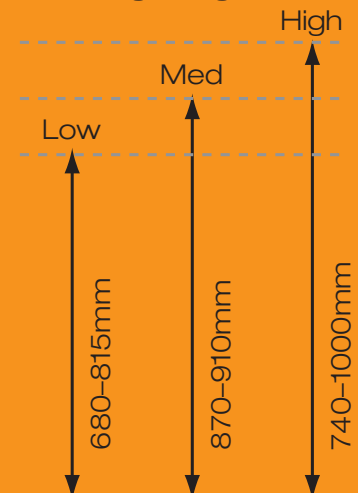
The majority of TechnoChair model references are numbered in a way that denotes the chair height range. Those numbers ending with 1 or 4 are high chairs, 2 or 5 are intermediate chairs and 3 or 6 are low chairs.



Sitting Heights



Working Heights



TechnoChair

Pu Multi-application Chairs

Pu is the most comprehensive range of polyurethane seating available anywhere today. The chair is arguably the most comfortable yet robust version of any polyurethane chair for use in laboratories, industrial and sterile environments.

SATRA Certification: BS5459: Part 2: 2000 for use by persons weighing up to 150 kilograms and for use up to 24 hours a day.

Overall dimensions in millimetres

Width	Depth	Height	Seat Hgt
-------	-------	--------	----------

Pu4 High Lift, Footring and Glides

600	600	-	615+260
-----	-----	---	---------

Pu5 Intermediate Lift, Footring and Glides

600	600	-	570+200
-----	-----	---	---------

Pu6 Low Lift and Standard Castors

600	600	-	480+120
-----	-----	---	---------

Available in Blue or Black

Extras:- Seat tilt, Aluminium base & chrome gas column.



Pu5



Pu4

with optional chrome base



Pu6

TechnoChair

Pu Multi-application Stools

Polyurethane is the most versatile of materials and is ideal for stools and visitors chairs for use in laboratories, industrial and sterile environments.

Overall dimensions in millimetres

Width	Depth	Height	Seat Hgt
-------	-------	--------	----------

Pu 151 High Lift, Footring and Glides			
---------------------------------------	--	--	--

600	600	-	540+260
-----	-----	---	---------

Pu 152 Intermediate Lift, Footring and Glides			
---	--	--	--

600	600	-	475+200
-----	-----	---	---------

Pu 153 Low Lift and Standard Castors			
--------------------------------------	--	--	--

600	600	-	440+120
-----	-----	---	---------

Pu Oxford Saddle			
------------------	--	--	--

650	650	-	620+200
-----	-----	---	---------

Stool Perch			
-------------	--	--	--

650	650	-	530+200
-----	-----	---	---------



Pu153



Pu Oxford Saddle



Stool Perch

Extras:- Seat tilt on Oxford Saddle and Stool Perch



Pu151

TechnoChair

ESD Clean Room Chairs

ESD Cleanroom seating provides optimum balance of ergonomic function and clean room specification. Incorporating the sound design features of the ESD and sterile chair construction, these chairs are recognised as world-class. All TechnoChair ESD cleanroom chairs incorporate a HEPA filter as standard.

Certified in accordance with European Standard EN143 and International Standard ISO 14644: Part 1-Class 4 and British and European Standard IEC 61340-5-1/2.

Overall dimensions in millimetres

Metreage	Width	Depth	Height	Seat Hgt
----------	-------	-------	--------	----------

TC301 High Lift, Footring and Glides				
1.4	480	490	–	625+260
TC302 Intermediate Lift, Footring and Glides				
1.4	480	490	–	575+200
TC303 Low Lift, Brake Unloaded Soft Wheel Castors				
1.4	480	490	–	485+120

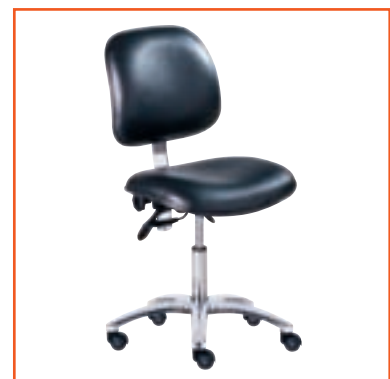
Available in Black conductive vinyl only
Extras: - Replace ESD Glides with ESD Castors, Seat Tilt



TC301



TC302



TC303

TechnoChair

Sterile Chairs

Sterile applications demand an absolute commitment to the control of hygiene and cleanliness. The consequences of failing to meet the required standards can be serious in pharmaceutical production, food preparation and in public healthcare.

TechnoChair Task sterile seating is covered in medical grade vinyl on both surfaces of the back and seat pads, which is water and air impermeable and has a polished aluminium base, chrome gaslift and footring together with an enclosed 'box' style mechanism. The sealed seat is fitted with a HEPA filter to prevent migration of particles.

Certified in accordance with European Standard EN143 and International Standard ISO 14644: Part 1-Class 4.

Overall dimensions in millimetres

Metreage	Width	Depth	Height	Seat Hgt
TC311 High Lift, Footring and Glides				
1.4	480	480	–	625+260
TC312 Intermediate Lift, Footring and Glides				
1.4	480	490	–	575+200
TC313 Low Lift, Brake Unloaded Soft Wheel Castors				
1.4	480	490	–	485+120

Available in Black, White, Grey and Blue vinyl
Extras:- Replace Glides with Castors, Seat Tilt



TC311



TC312



TC313

TechnoChair

General & Perch Stools

Tract manufacture stools for various applications and different functions. Whether for industrial or office use – we have something to suit your needs.

Overall dimensions in millimetres				
Metreage	Width	Depth	Height	Seat Hgt
TC108H High Lift, Footring And Glides				
0.5	600	600	–	540+260
TC109M Intermediate Lift, Footring And Glides				
0.5	600	600	–	475+200
TC110L Low Lift, Brake Unloaded Soft Wheel Castors				
0.5	600	600	–	440+120
Stool Perch				
–	650	650	–	530+200

Extras:- Replace glides with castors, chrome base and gas lift. Seat Tilt on Stool Perch.



TC108
(shown with optional chrome base and gas lift column)



TC110



Stool Perch