

VG64 Digital Vacuum Gauge

Suitable for field or laboratory use, the VG64 delivers high precision at a low price.

Features/Benefits

- Ultra fine resolution: (1 Micron when vacuum ≤ 200 Microns)
- Reads vacuum in 7 international units
- Display updates every 1/2 second
- Convenient built in hanger
- Cleaning port provides quick cleaning and drying of sensor

Accessories

Part No.	
10475	120 volt power adapter
10740	Soft Pouch



VGC Vacuum Gauge Coupler

Insures leak free connection to vacuum gauge during measurement



VG60 Electronic Vacuum Gauge

10 segment color coded LED readout provides fast response of vacuum measurements.

Features/Benefits

- Pocket size—only 5 1/2" x 1 3/4" x 1 1/2"
- Cleanable sensor
- Single switch operation
- Low battery indication
- Color coded LED display
- Built-in hanger
- Soft case included (MFDCASE)

Accessories

Part No.	
DPGT	120 V Power Adapter



VG61 Electronic Vacuum Gauge

- Enjoy the same features as the VG60 in a durable hard case. Sensor cord extends to 5 feet.

Features/Benefits

- Cleanable sensor
- Single switch operation
- Low battery indication
- Color coded LED display



VG65 *New!* Professional Series Digital Vacuum Gauge

Same great specifications as the VG64 in a rugged service case.



VG66 *New!* Professional Series Analog Vacuum Gauge

Features/Benefits

- Vacuum range 50 – 5000 microns
- 5 inch Analog meter
- Cleanable Vacuum Sensor
- 500 psi maximum overpressure
- Low battery indicator
- Expandable sensor cord (up to 6 feet)
- Sensor cord extendable using standard telephone cord
- Rugged Service case

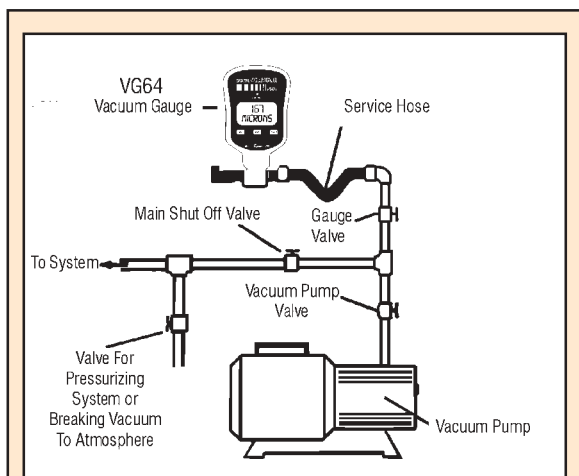


See specifications for all Vacuum Gauges on page 158.



Vacuum Gauge Specifications

	VG64	VG60	VG61	VG65	VG66
Sensor Type	Thermistor	Thermistor	Thermistor	Thermistor	Thermistor
Connector Type	Standard 1/4 inch male flare fitting.	Standard 1/4 inch male flare fitting.	Standard 1/4 inch male flare fitting.	Standard 1/4 inch male flare fitting.	Standard 1/4 inch male flare fitting.
Vacuum Range	0 – 12,000 Microns (0 – 1,600 Pascals)	50 – 5,000 Microns	50 – 5,000 Microns	0 – 12,000 Microns (0 – 1,600 Pascals)	10 – 5,000 Microns
Scale	Microns, PSI, InHg, milliBars, Pascals, Torr, milliTorr	Microns - 10 LED segments from atmosphere to 50 Microns	Microns - 10 LED segments from atmosphere to 50 Microns	Microns, PSI, InHg, milliBars, Pascals, Torr, milliTorr	Microns, Torr
Resolution	0-200: 1 Micron 201-500: 5 Microns 501-1,000: 10 Microns 1,001-2,000: 50 Microns 2,001-5,000: 250 Microns 5,001-8,000: 500 Microns 8,001-12,000: 1,000 Microns			0-200: 1 Micron 201-500: 5 Microns 501-1,000: 10 Microns 1,001-2,000: 50 Microns 2,001-5,000: 250 Microns 5,001-8,000: 500 Microns 8,001-12,000: 1,000 Microns	
Operating Temperature Range	35°F to 125°F (2°C to 52°C)			35°F to 125°F (2°C to 52°C)	
Overpressure	500 PSI Max (20 Bar)	500 PSI Max (20 BAR)	500 PSI Max (20 BAR)	500 PSI Max (20 BAR)	500 PSI Max (20 BAR)
Accuracy	±10% (100-1000 Microns)			±10% (100-1000 Microns)	
Power Source	9 V Alkaline Battery (not included)	9 V battery (not included)	9 V battery (not included)	9 V battery (not included)	9 V battery (not included)
Auto Shutoff	Yes	No	No	Yes	N/A
Dimensions	5 1/2" x 3" x 1 1/4"	5 1/2" x 3 3/4" x 1 1/2"		5 1/2" x 3" x 1 1/4"	9 1/4" x 7 1/2" x 2 3/4"
Weight	6.7 oz	6.8 oz		1 lb 11 oz	2 lbs 6 oz



Application Note:

CONNECTING THE VG64 TO THE VACUUM SYSTEM

A vacuum gauge should be connected to the vacuum system at the vacuum port. The "Auxiliary Port" is primarily for cleaning and should normally be closed with the supplied cap. It is possible to connect the vacuum gauge in-line, however, it may restrict flow and increase the evacuation time.

CHECKING HVAC SYSTEMS FOR LEAKS

When checking a system for leaks use only copper tubing and a vacuum proof valve. Generally, standard hoses will not hold a vacuum. If using the blank-off valve on the vacuum pump check it for leaks periodically. At the beginning of the test the vacuum gauge reading may increase due to a system equalization. The vacuum reading should hold after a minimum of 5 minutes. If the reading continues to increase it may indicate a leak in the system.

DPG500 Digital Pressure Gauge

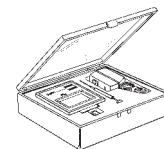
The DPG500 Digital Pressure Gauge is an extremely accurate, pressure gauge that operates on a standard 9 Volt battery or 120 VAC. With its universal pressure sensor, it can measure pressure of a liquid, gas, steam and more.

Features/Benefits

- Universal Pressure Sensor (Liquid, Gas, Steam, etc...)
- Range: -14 to 500 PSI
- Large 1/2" high LCD display
- 9 Volt battery operation
- Concealed battery compartment
- Accessible zero adjustment screw
- Power saving "ON-OFF" switch
- Standard 1/8" N.P.T. brass male connection



Patent No. 4777827



Storage Case For Gauge and Accessories Included

Specifications

Scale	-14 to 500 PSI
Operating temperature range	32°F to 120°F
Accuracy	Better than 1%
Full Range Scale	Used with steam/gas/water/air/fluids
Resolution	1 PSI
Display	0.5" LCD
Power	9 V battery or 120 VAC with adapter
Pressure port	1/8 NPT male
Size	3 7/32" x 3 1/4" x 1 1/2"

Standard Accessories

1/8" N.P.T. to 1/4" Flare brass adapter fitting
A.C. Power adapter with 5 foot cord (Part No. DPGT)
Calibration screwdriver
Storage case

MADE IN THE USA



SUPCO's full line of Digital Multimeters (DMM's) provide electrical measurement needs for all of your applications.

- Thermocouple Voltages in Furnaces
- AC/DC Line and Control Voltages
- Flame Safeguard Current (DM25 0.01 resolution)
- Frequency (Hz) in systems and panels (DM40)
- Continuity Checks
- Thermostat Heat Anticipator Current
- Heating Element Resistance
- Run and Start Capacitor verification
- Motor Winding Resistance

Digital Multimeters & Current Probes

DM20 Digital Multimeter

The DM20 Digital Multimeter (DMM) provides general electrical measurements for most applications. It's sturdy design and protective rubber boot provide reliable measurements to meet your needs.

Features/Benefits

- 750 Volts AC
- 1000 Volts DC
- 20 MegaOhms Resistance
- Continuity
- 10 Amps AC
- 10 Amps DC
- Large Display
- Data Hold
- 3 Year Warranty



DM25 Digital Multimeter with Capacitance

The DM25 Digital Multimeter (DMM) provides electrical measurements for your HVAC applications, including Capacitance and 0.01 DC μ Amps resolution for your flame safeguard measurements. It's sturdy design and protective rubber boot provide reliable measurements to meet your needs.

Features/Benefits

- 750 Volts AC
- 1000 Volts DC
- 40 MegaOhms Resistance
- Continuity
- 10 Amps AC
- 10 Amps DC
- 20,000 μ F Capacitance
- .01 μ mA DC Resolution
- Data Hold
- 3 Year Warranty



DM40 True rms Digital Multimeter

The DM40 True rms Digital Multimeter (DMM) provides the most accurate electrical measurements for your HVAC applications. It's sturdy design and protective rubber boot provide reliable True rms measurements to meet your needs.

Features/Benefits

- AC/DC Volts
- AC/DC Amps
- Resistance
- Continuity
- Capacitance
- Triple Readout Display
- 4000 Count Display
- Backlight for Display
- Sleep Mode
- Min/Max Record
- Relative Mode
- 3 Year Warranty



DM10/DM10T Economy Digital Multimeters with Temperature (DM10T)

The DM10 and DM10T Digital Multimeters provide an economical solution to your everyday electrical and temperature (DM10T) measurement needs.

Features/Benefits

- 1000 Volts DC
- Continuity
- 2M Ω Resistance
- 10 Amps DC
- 750 Volts AC
- Temperature (DM10T)



A vital tool for every service professional, versatile and accurate current probes are used to solve a multitude of problems. Choose from the convenience of an open-style, heavy duty or complete HVAC current probe.



Applications

- HVAC Equipment Consumption
- Flame Safeguard circuits (CPH100)
- Branch Circuit Current
- AC Line and Control Voltages
- Continuity Check
- Temperature Testing
- Capacitor Testing

New!



CPH100
HVAC Current Probe

Features/Benefits

- 400 Amps AC
- DC μ Amps
- AC/DC Volts
- Resistance
- Capacitance
- Temperature
- Frequency
- Continuity
- Auto Shut off
- 1 year Warranty



CPO70
Open Jaw Multi Probe

Features/Benefits

- Simultaneous measurements:
200 Amps AC and one of the following:
 - AC or DC Volts
 - Resistance
 - Capacitance
 - Frequency
- Two LCD displays
- 3 year Warranty



CP50
Digital Current Probe

Features/Benefits

- 400 Amps AC
- Resistance
- AC/DC Volts
- Peak/Data Hold
- Continuity
- 3 Year Warranty

Optional Accessories



CPA20
AC Current Probe Adapter

The CPA20 Current Probe adapter is designed to measure AC current. It can be used with most digital multimeters having a 20mA and 200mA or 40mA and 400mA AC range.

Features/Benefits

- Two ranges: 40A and 400 A
- 1 1/8" Jaw capacity
- 4 foot cable length



TPA1
Temperature Adapter

The TPA1 Temperature Adapter can be used with digital multimeters having 200mV or 2V DC ranges and analog multimeters having DCmV ranges up to 300mV DC.

Features/Benefits

- Measures up to 500°F
- Uses K-type thermocouple



TLA
Test Leads

- 1000V AC or DC max
- 10 Amps max
- Includes screw-on alligator clips



SCDM/SCCP
Soft Deluxe Case

- Features/Benefits
- Rugged Cordura Case
 - Zippered case
 - Sturdy belt loop
 - Identification window

Digital Multimeters and Current Probe Specifications

	DM10/ DM10T	DM20	DM25	DM40	CP50	CP070	CPH100
Volts AC	750	750	750	650	600	600	600
Volts AC Best Resolution	1 V	0.1mV	0.1mV	0.1mV	1.0mV	1mV	0.1mV
Volts DC	1000	1000	1000	1000	4	600	600
Volts DC Best Resolution	0.1 mV	0.1 mV	0.1 mV	0.1 mV	1.0mV	0.1mV	0.1mV
Amps AC		10	10	10	400	200A	400A
Amps AC Best Resolution		0.1 mA	0.1 mA	0.1 mA	0.01 A	100mA	0.1A
Amps DC	10	10	10	10			4000µA
Amps DC Best Resolution	0.1 mA	0.1 mA	0.01 mA	0.1 mA			0.1µA
Frequency (Hz)						9.999MHz	150.0KHz
Frequency Best Resolution						0.001Hz	0.001Hz
Base Accuracy (DC Volts) (AC Amps)	± 0.5% ± 2 dgts	± 0.5% ± 2 dgts	± 0.5% ± 1 dgt	± 0.3% ± 2 dgts	± 1.5% ± 4 dgts	± 1.2% ± 2 dgts ± 3.0% ± 3 dgts	± (1.5% + 3 dgts) ± (2.0% + 3 dgts)
Resistance max. (Ohms)	2 M	20M	40M	40M	4 K	40M	40M
Continuity	Yes	Yes	Yes	Yes	Yes	Yes	Yes
Capacitance			20,000mF	10,000mF		200µF	100.0µF
Capacitance Best Resolution			0.1 mF	0.01 mF		1pF	0.01nF
Temperature	-4 °F to 2498° F (DM10T) (-20° C to 1370° C) (DM10T)						-50°F to 2372°F -5°C to 1300°C
Temperature Accuracy	± 3 ± 2 digits						± (3% + 5 digits)
Display (Counts)	2000	2000	4000	4,000 plus bargraph	4,000	2,000	4,000
Data Hold		Yes	Yes		Yes	Yes	Yes
Peak Hold					Yes		
Sleep Mode				Yes			Auto Shut Off
Min/Max Record				Yes			
Relative Mode				Yes			
Operating Temp.	32° F to 74° F (0° C to 23° C)	32° F to 104° F (0° C to 40° C)	32° F to 104° F (0° C to 40° C)	32° F to 114° F (0° C to 40° C)	32° F to 122° F (0° C to 50° C)	14° F to 122° F (-10° C to 50° C)	14° F to 122° F (-10° C to 50° C)
Storage Temp.		14° F to 122° F (-10° C to 50° C)	14° F to 122° F (-10° C to 50° C)	-4° F to 140° F (-20° C to 60° C)	-4° F to 140° F (-10° C to 60° C)	-22° F to 140° F (-30° C to 60° C)	-22° F to 140° F (-30° C to 60° C)
Relative Humidity	0% to 75% RH	0% to 80% RH	0% to 80% RH	0% to 80% RH	0% to 80% RH	0% to 90% RH	0% to 90% RH
Fuse Protection	mA: 0.2A/250V	mA: 2A/600VAC A: 10mP/600VAC	mA: 2A/600VAC A: 10mP/600VAC	mA: 0.5mP/600VAC A: 10mP/600VAC			
Power	9 V Battery (included)	9 V Battery (included)	9 V Battery (included)	9 V Battery (included)	9 V Battery (included)	2 AA Batteries (included)	2 1.5V "AAA" Batteries (included)
Battery Life (Typical)		200hours	200hours	100hours	200Hours		
Size (HxLxW)	5.5" L x 3"W x 1.5"D (140mm x 76mm x 36mm)	1.3" x 3.4" x 7.4" (33mm x 86mm x 187mm)	1.3" x 3.4" x 7.4" (33mm x 86mm x 187mm)	1.3" x 3.4" x 7.4" (33mm x 86mm x 187mm)	7.13" X 2.63" X 1.25" (181mm x 67mm x 32mm)	8.5" X 2.0" X 1.7" (216mm x 51mm x 43mm)	7.9" X 2.0" X 1.4" (200mm X 50mm X 35mm)
Weight	8 oz (227g)	23.3oz (660g)	23.3oz (660g)	23.3oz (660g)	19oz. (539g)	16oz. (454g)	7.1oz (200g)
Warranty	1 Year	3 Year	3 Year	3 Year	3 Year	3 Year	1 year

Digital Multimeters and Current Probe Accessories

	DM10T	DM20	DM25	DM40	CP50	CP070	CPH100
Standard Accessories (Included)							
TLA	Test Leads w/ Alligator Clips	•	•	•	•		•
TP10K	Temperature Probe	•					
TPFG	Fiberglass Temperature Probe						•
FUSE2	2A, 600 V Fuse		•	•			
FUSE10	10A, 600 V Fuse		•	•			
9 V Battery		•	•	•	•		
AAA Battery							2
FUSEA	0.5A, 600 V Fuse		•	•			
Optional Accessories							
TPA1	Temperature Adapter		•	•	•		
TPFDA	FDA Approved Temperature Probe						•
CPA20	Current Probe Adapter		•	•			
SCDM	Soft Carrying Case for DMM's		•	•		•	
SCCP	Soft Case for Current Probes	•					•





Applications

- Superheat Measurements (T1-T2)(DT22)
- Oven Temperature measurements
- Ambient Temperature Measurements
- Surface Temperature Measurements
- Food Service
- Measure HVAC and Refrigeration System Temperatures

DT12 Digital Thermometer

The full ranging DT12 Digital Thermometer comes complete with a K-type thermocouple oven clip probe and is housed in a sturdy rubber boot for accurate and reliable temperature measurements.

Features/Benefits

- K-Type Thermocouple Probe with Oven Clip Included
- Range -112°F to 1832°F (-80°C to 1000°C)
- Protective Rubber Boot Included
- Low Battery Indicator
- 3 Year Warranty

DT22 Dual Digital Thermometer

The Dual Input DT22 Digital Thermometer comes complete with two (2) K-type thermocouples. Providing Temperature Differential Measurement (T1-T2), it is ideal for superheat applications.

Features/Benefits

- Two (2) K-Type Thermocouple Probes Included
- Range -328°F to 2462°F (-200°C to 1350°C)
- Temperature Differential Measurement (T1-T2)
- K-Type and J-Type Thermocouple Selectable
- Min/Max Record
- Data Hold
- Protective Rubber Boot Included
- Auto Shut Off
- Low Battery Indicator
- 3 Year Warranty

DDT2 Digital Differential Thermometer

With its Dual Display, the DDT2 provides instant measurements for two Temperature points (T1,T2) and their difference (T1-T2). Optional PC Software (DDT2S) allows for analysis of trend data.

Features/Benefits

- Dual K-Type Thermocouple Inputs
- Temperature Differential Measurement (T1-T2)
- Records Up to 8 Min/Max/Avg Measurements
- Relative Function provides Instant Temperature Difference between successive measurements
- Dual Display
- Auto-Ranging
- Data Hold
- Auto Power Off
- Vinyl Case Included



PT100 Digital Pocket Surface Thermometer

Applications

- Speedy recovery - reclaim temperature measurement
- Measures evaporator plate and condensing temperatures
- Air inlet, outlet and surrounding air

Features

- Ultra sensitive air and surface reading probe
- Provides fast response—within seconds
- Temperature "HOLD" switch—keeps readings fixed



Part No.	Description
PT100	Fahrenheit Model
PT100C	Celsius Model
PT100H	High Temp. Fahrenheit
PT100HC	High Temp. Celsius



TPFDA
FDA Approved K-type
Thermocouple Probe



TPFGB
Fiberglass Insulated K-type
Thermocouple Probe



TPOC
K-type Thermocouple
Probe with Oven Clip



TPP
K-type Thermocouple
Piercing Probe



TPS
K-type Thermocouple
Surface Probe



The THP1 and THP2 provide quick measurement of temperature and humidity for a multitude of applications.

THP1
Thermo-Hygrometer Pen

Features/Benefits

- Measures Temperature & Humidity, Simultaneously
- Dual Display
- Temperature in °F or °C
- Auto Power Off (20 min.)
- RESET Switch
- HOLD Switch
- Belt or Pocket Clip
- Battery Included
- Min/Max Memory

THP2
Thermo-Hygrometer Pen

Features/Benefits

- Measures Temperature & Humidity, Simultaneously
- Dual Display
- Temperature in °F or °C
- Pocket Clip
- Battery Included
- Min/Max Memory

THC200
Thermo-Hygrometer w/ Clock

Features/Benefits

- Table top or wall mount
- Measure Temperature and Humidity Simultaneously
- Real Time Clock
- Set High and Low Alarms for Temperature and Humidity
- Temperature Range: -4°F to 122°F (-20°C to 50°C)
- Humidity Range: 25% to 95%
- °F/°C Switchable

Temperature/Humidity Testers & Thermometers



DSP990
Digital Psychrometer

The DSP990 is a precision temperature & humidity instrument. It provides measurement of Temperature, Humidity, Wet Bulb and Dew Point

- No Water Necessary
- No Twirling
- No Reading Charts

Applications

- Cellophane
- Laboratory
- Textile
- Photographic
- Snowmaking
- Chemical
- Pharmaceuticals
- Paper
- Printing
- Tobacco

Features/Benefits

- Min/Max
- °F/°C Switch
- Reset Button
- Pocket Sized
- One Year Warranty
- Data Hold
- Auto Power Off
- Low Battery Indicator
- Protective Cover



TPM110
Temperature Indicator

A highly reliable, extremely accurate temperature indicator. Custom designed faceplates with your company name or logo are available with quantity orders.

Applications

- Direct replacement for old style 2 1/4" and 2 1/2" dial gauges
- Commercial Refrigeration/Freezer Panels
- Hospital/Laboratory Control Panels

Features/Benefits

- Large LCD display
- Easy installation
- Thermocouple wire can be extended to 500'
- Can calibrate in the field

Part No.		
TPM110	110 VAC	Fahrenheit Model
TPM110C	110 VAC	Celsius Model
TPM220	220 VAC	Fahrenheit Model
TPM220C	220 VAC	Celsius Model
TPM12	12 VAC	Fahrenheit Model
TPM12C	12 VAC	Celsius Model



Temperature and Humidity Tester Specifications

	DT12	DT22	DDT2	PT100	TPM110	THP1	THP2	DSP990	THC200
# of inputs	1	2	2	1	1	1 Temp./1 Hum.	1 Temp./1 Hum.		1 Temp./1 Hum.
Thermo - couple Type	K	K, J	K		J				
Differential		*	*						
Data Hold		*	*	*		*		*	
Min/ Max		*	*			*		*	*
Dual Display			*			*			Triple Display
Auto-Off	*	*	*			*			
Temp. Range	-112°F to 2462°F -80°C to 1000°C	K-Type -112°F to 2462°F -80°C to 1000°C J-Type -328°F to 1832°F -200°C to 1000°C	-328°F to 2498°F -200°C to 1370°C	PT100/PT100C -40°F to 199.9°F -40°C to 93.28°C PT100H/PT100HC -40°F to 250°F -40°C to 120°C	-70°F to 199°F -56.67°C to 93.28°C	14°F to 122°F -10°C to 50°C	-4°F to 122°F -20°C to 50°C	-4°F to 122°F -20°C to 50°C	-4°F to 122°F -20°C to 50°C
Temp. Resolution	0.1°F -112°F to 299°F 1°F (300 + °F)	0.1°F -328°F to 999.9°F 1°F (1000 + °F)	0.1°F -200°F to 200°F 1°F otherwise	0.1°F -40°F to 199.9°F 1.0°F (-40° to 250°F)	1.0°F	0.1°F	0.1°F	1.0°F	0.1°F
Temp. Accuracy	±0.5% Rdg + 1.8°F (-58°F to 1832°F)	±0.3% Rdg + 1.8°F	±0.5% Rdg + 2°F	0.2 Surface 1.0 Air	±1°F	±1.8°F	±2°F	±1.8°F	±1.8°F or 1.0°C
Humidity Range						5% to 95% RH	10% to 90% RH	0 to 100% RH	25% to 95% RH
Humidity Resolution						0.1% RH	1% RH	1% RH	1% RH
Humidity Accuracy						±3% for 10% to 90% RH, otherwise ±5%	±5% for -40% to 80% RH otherwise ±7%	±3% for 10% to 90% RH, otherwise ±4%	±5% RH
Power	AAA (2) Batteries	9V Alkaline	9V Alkaline	9V Alkaline	120/240V 50/60 Hz	Button cell (1) CR2032	Button cell (1) LR44	AAA (2) Batteries	AA (2) Batteries
Size (HxLxW)	1.8" x 6" x 3"	1.8" x 6" x 3"	7.25" x 2.5" x 1.4"	1.5" x 6.75" x 0.8"	3.38" X 3.38"	5.8" X .75" X .6"	6.5" X 1.75" X .6"	6.7" X 1.85" X 0.5"	4.38" X 2.75" X 0.5"
Weight	7.2 oz	7.2 oz	7.4 oz						
Warranty	3 year	3 year	1 year	1 year	1 year	1 year	1 year	1 year	1 year

Temperature Probe Specifications

	TPFDA	TPFG	TPOC with Oven Clip	TPP Piercing	TPS Surface
Thermocouple Type	K-Type	K-Type	K-Type	K-Type	K-Type
Temp. Range:	-40°F to 950°F -40°C to 510°C	-40°F to 950°F -40°C to 510°C	-40°F to 950°F -40°C to 510°C	-58°F to 482°F -50°C to 250°C	-58°F to 1202°F -50°C to 650°C
Subminiature connector	*	*	*	*	*
4' bead tip probe with FDA approved insulation	*				
3.7" heavy duty chisel tip insertion probe with handle and 4' cord			*		
4" heavy duty spring loaded tip surface probe with handle and 4' cord				*	



Infrared Thermometers

Laser Infrared Thermometers offer precise, non-contact measurement in a lightweight, handheld instrument. With one hand operation, they are ideal for a wide variety of applications.

Applications

- Refrigeration Systems
- Heating Systems
- Supply and Return Registers
- Circuit Breaker Panels
- Motors/Bearings
- Transformers
- Ducts
- And More



New!

PIT1
Pocket Infrared Thermometer

- 1:1 Optics
- Adjustable Emissivity

New!

LIT6
Laser Infrared Thermometer

- 6:1 Optics
- Laser Pointer
- Backlight

LIT8B
Laser Infrared Thermometer

- 8:1 Optics
- Laser Pointer
- Backlight

LIT8
Laser Infrared Thermometer

- 8:1 Optics
- Laser Pointer
- Backlight
- Carrying Case Included

New!

LIT8LT
Low Temperature Laser Infrared Thermometer

- 8:1 Optics
- Laser Pointer
- Backlight
- Low Temperature Measurements

New!

LIT12LT
Low Temperature Laser Infrared Thermometer

- 12:1 Optics
- Laser Pointer
- Backlight
- Low Temperature Measurements

Temperature/Humidity Testers & Thermometers

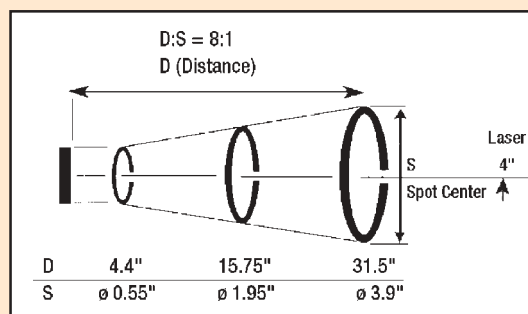
SPECIFICATIONS

	PIT1	LIT6	LIT8B	LIT8	LIT8LT	LIT12LT
Temperature Range	-27°F to +428°F (-33°C to +220°C)	0°F to +500°F (-18°C to +260°C)	-4°F to 518°F (-20°C to 270°C)	-4°F to 788°F (-20°C to 420°C)	-58°F to 932°F (-50°C to 500°C)	-58°F to 1022°F (-50°C to +550°C)
Best Resolution	0.1°C or °F (switchable)	1°F (1°C)	1°F (1°C)	1°F (1°C)	0.1°F (0.1°C)	0.1°F (0.1°C)
Accuracy	±2% of reading or ±2°C	±2% of reading or ±2°C	±2% of reading or 4°F/2°C	±2% of reading or 4°C	±2% of reading or ±2°F/±2°C	±1.5% of reading or ±4°C
Emissivity	0.95 default adjustable 0.01 to 1 emissivity	0.95 fixed	0.95 fixed	0.95 fixed	0.95 fixed	0.95 fixed
Distance to Spot Ratio (D:S)	1:1	6:1	8:1	8:1	8:1	12:1
Sample Rate	1 second		1 second			2.5 times/second
Display	LCD	LCD with backlight	LCD with backlight	LCD with backlight	LCD with backlight	LCD with backlight
F/C Switchable	•	•	•	•	•	•
Automatic shut off	•	•	•	•	•	•
Power Supply	CR2032 (Included)	9V Battery (Not Included)	9V Battery (Included)	9V Battery (Included)	9V Battery (Included)	9V Battery (Included)
Weight	1.3 ounces (32g incl. battery)	5.3 ounces (150g)	5.8 ounces (180g)	6.4 ounces (200g)	5.9 ounces (185g)	9.3 ounces (290g)
Dimensions	.7" X 1.5" X 2.7" (18mm X 37mm X 68mm)	5.1" X 2" X 1.25" (180mm X 50mm X 42mm)	6.4" X 3.2" X 2.4" (159mm X 79mm X 57mm)	6.7" X 1.7" X 1.6" (170mm X 43mm X 43mm)	6.4" X 3.2" X 2.4" (159mm X 79mm X 57.2mm)	3.9" X 2.2" X 9.1" (100mm X 56mm X 230mm)

Application Note:

What is Distance to Spot Ratio (D:S)?

This is the size of the measurement field that a non-contact infrared thermometer uses to provide a temperature reading. The infrared thermometer averages the temperature of that field to calculate the temperature reading. For example, a D:S ratio of 8:1 means that the measurement field measures approximately 1 foot in diameter when the target is approximately 8 feet away.



Emissivity:

The ability of a surface to reflect the infrared radiation relative to an ideal surface. A flat black surface is as close to ideal as you can get. Most infrared thermometers have a fixed emissivity of .95. The more reflective the surface the lower the emissivity adjustment should be.



Pocket Digital Thermometers

Applications

- Refrigerators/Freezers
- Food Processing/Prep.
- Heating/Ventilating



ST09

- -40°F to 392°F (-40°C to 200°C)
- Accuracy: +/-2°F between -14°F to 212°F (+/-1°C between -10°C to 100°C)
- Min/Max
- F°/C° Switch
- Protective Sheath
- ON/OFF Switch
- Data Hold
- Pocket Clip
- Battery Included (STBAT)
- Drop Resistant
- Waterproof



ST10

- -50°F to 305°F (-45°C to 150°C)
- Accuracy: +/-2°F or +/-1°C
- F°/C° Switch
- Large LCD
- Display updates every second
- Battery included. Free spare battery (STBAT)
- Pocket clip
- 4 23/32" (12cm) stainless steel stem

Pocket Dial Thermometers



ST01 ST02

- 1" dial
- 5" stem
- °F only
- Recalibration adjustment



ST07 ST08

- 1 3/4" dial
- 5" stem
- °F and °C
- Recalibration adjustment

Part No.	Dial	Stem	Temperature Range	Application
ST01	1"	5"	-40°F to 160°F	Refrigerators/Freezers
ST02	1"	5"	0°F to 220°F	Air Conditioners
ST07	1 3/4"	5"	0°F to 220°F (-18°C to 105°C)	Air Conditioners
ST08	1 3/4"	5"	-40°F to 160°F (-40°C to 70°C)	Refrigerators/Freezers

Appliance Thermometers



ST03 ST04

- Stainless Steel Construction
- Hangs or stands
- °F and °C
- Unbreakable lens



ST06

- Horizontal design
- Stainless steel wire clips for easy hanging
- °F and °C

Part No.	Temperature Range	Application
ST03	-20°F to 80°F (-30°C to 27°C)	Refrigerators
ST04	100°F to 600°F (38°C to 315°C)	Ovens
ST06	-40° to 80°F (-40° to 27°C)	Refrigerators/Freezers

All of your temperature sensitive areas are protected with the broadest line of temperature alarms: single and dual set point, wireless remote, battery operated and multi-channel. Select the right one for your application.

Applications

- Food Markets, Convenience Stores, Supermarkets
- Restaurants, Florists, Greenhouses
- Laboratories, Pharmaceutical Storage Facilities
- Refrigerated Transport, Cold Storage Facilities
- Computer Rooms

Features/Benefits

- Adjustable alarm temperature ranges
- Audible and visual alarm
- Built-in terminals for remote alarm or telephone dialer connection (except TA7)
- Alarm switch for 'No delay' or '1 hour delay'



MADE IN THE USA

TA2
Single Set Point Temperature Alarm

A reliable, inexpensive alarm for refrigerators and freezers. Just flip a switch to activate alarm on a rise or fall in temperature.

- Adjustable Range from -10°F to +80°F (-25°C to +30°C)

Model No.

TA2	120 VAC Fahrenheit Model
TA2C	120 VAC Celsius Model
TA2-220	220 VAC Fahrenheit Model
TA2-220C	220 VAC Celsius Model



MADE IN THE USA

TA4
Wireless Remote Temperature Alarm

No wires to run – The remote transmitter uses existing 120 VAC lines to send the alarm signal to the receiver. Use one receiver for up to 20 different transmitters. Switch activates alarm on a rise or fall in temperature.

- Adjustable Range from -10°F to +80°F (-25°C to +30°C)

Model No.

TA4	Complete System (includes 1 transmitter and 1 receiver)
TA4R (option)	Receiver
TA4T (option)	Transmitter



MADE IN THE USA

TA6
Dual Set Point Temperature Alarm

Alarms on a rise **AND** fall in temperature.

- Adjustable Range from -10°F to +80°F (-25°C to +30°C)

Model No.

TA6	120 VAC Fahrenheit Model
TA6C	120 VAC Celsius Model
TA6220	220 VAC Fahrenheit Model
TA6C220	220 VAC Celsius Model



MADE IN THE USA

TA7
Battery Operated Temperature Alarm

For sensitive temperature applications in remote areas, this battery operated unit is inexpensive and easy to install. Alarms on rise in temperature only.

- Adjustable Range from -10°F to +80°F (-25°C to +30°C)

Model No.

TA7	Fahrenheit Model
TA7C	Celsius Model

Temperature Alarms & Controls

See following pages for complete specifications





TA3 Digital Temperature Alarm



This panel mounted temperature alarm with digital display provides both an audible and visual alarm. Alarms on rise or fall in temperature.

- Adjustable Range from -50°F to +80°F (-25°C to +30°C)

Model No.			
TA3	120 VAC	Fahrenheit Model	
TA3C	120 VAC	Celsius Model	
TA3-220	220 VAC	Fahrenheit Model	
TA3C220	220 VAC	Celsius Model	
TA3WM		Wall Mount Bracket, optional	



New!



TAL2 Dual Temperature Alarm Logger

Set high and low alarms for two (2) temperature sensitive applications, and track their temperature trends, simultaneously.

Alarm Functions

- Adjustable Range from -10°F to +80°F (-25°C to +30°C)
- Audible alarm & Relay contacts
- Relay contacts can connect to remote alarm dialer
- Programmable alarm delay
- Alarm event storage (up to 45 events)

Logger Functions

- Programmable interval (1 sec. to 18 hrs.)
- Data rollover
- Store 32,250 (single temp.) or 16,125 (dual temp.) data points
- Battery backup
- Software and cable included
- Minimum System Requirements: 8MB of RAM, 2M of disk space, 800 x 600 resolution, 1 free COM port or a free USB port (optional USB interface is required, p/n USBS)

Temperature Alarm Specifications

	TA2	TAL2	TA4
Alarm Channels	1	2	1
Alarm Adjustment Range	-10°F to 80°F (-25°C to 30°C, Celsius model)	-50°F to 86°F (-45°C to 30°C)	-10°F to 80°F (-25°C to 30°C, Celsius model)
Probe	Encapsulated sensor with 6 ft. cord	Encapsulated sensor with 15 ft. cord	Encapsulated sensor with 6 ft. cord
Sensor Type	Thermistor	Thermistor	J-Type Thermocouple
Maximum Probe extension	200 ft.	300 ft.	200 ft.
Temperature Accuracy (Display)			
Maximum Transmit/Receive Range			1500 feet (must use the same electrical lines)
Operating frequency			100KHz
Remote Alarm Connections	Screw type, 120 VAC, 5 Amps (dry contacts)	Normally open (N.O.). Closed on alarm. 48 volts, 100mA maximum	Screw type 120 VAC, 0.1 Amp max., (dry contacts)
Power	120 V AC (220 V optional)	110V or 220V power adapter supplied (p/n 14950)	120 V AC (220 V optional)
Battery Backup		9V alkaline battery (not included)	
Case	Hi-impact thermoplastic	Hi-impact thermoplastic	Hi-impact thermoplastic
Mounting	Surface, external holes provided		Surface, external holes provided
Dimensions	3" x 4 7/8" x 1 5/8"	3" x 2.5" x 1.1"	3" x 4 7/8" x 1 5/8"
Weight	13 oz	2.5 oz	24 oz
Warranty	1 year	1 year	1 year

Accessories

	TA2	TAL2	TA4	TA6	TA7	TA3	TAP4	401
SW25	25' Extension Wire	*	*	*	*		*	
SW50	50' Extension Wire	*	*	*	*		*	
SW75	75' Extension Wire	*	*	*	*		*	
SW100	100' Extension Wire	*	*	*	*		*	
TCW25	25' Type J Thermocouple Wire			*		*		*
TCW50	50' Type J Thermocouple Wire			*		*		*
TCW75	75' Type J Thermocouple Wire			*		*		*
TCW100	100' Type J Thermocouple Wire			*		*		*
TA3P	Probe w/ 6' Type J Thermocouple Wire					*		*
TA4P	Probe w/ 6' Type J Thermocouple Wire			*				
TA2PROBE	Probe w/ 6' extension wire	*						
TA6PROBE	Probe w/ 6' extension wire			*				
TA7PROBE	Probe w/ 4' extension wire				*			
14265	Replacement Sensor		*					*
RA25	Remote Audible Alarm w/ 25' extension	*	*	*		*	*	
USBS	USB to Serial Interface		*					
13495	Serial Port Cable		*					
ADTA	Auto Dialer	*	*	*	*	*	*	



TAP4 Four (4) Probe Temperature Alarm

Set alarms for 4 separate temperature applications. Provides a quick alert for a multitude of temperature problems.



Model No.

TAP4	-40°F to 60°F; 0°F to 100°F, 120V
TAP4-220	-40°F to 60°F; 0°F to 100°F, 220V
TAP4C	-18°C to 38°C; -40° C to 16°C, 120V
TAP4C-220	-18°C to 38°C; -40° C to 16°C, 220V

401 Digital Set Point Temperature Controller

A completely self-contained 120/220 VAC, ON/OFF temperature controller with digital display.

Applications

- Refrigeration temperature control
- Temperature alarm
- Temperature indication
- Furnace temperature control

Features

- LCD display of the set point and sensor temperatures
- Includes 15 ft. of Type J thermocouple wire with a 4 inch long stainless steel sensor
- 10 Amp Relay Contacts
- Rear terminal strip for all connections
- Front Panel LED indicates relay is energized
- Energize relay on rise or fall of temperature



Specifications

Sensor	Thermocouple Type J (included)
Scale	0° to 1200°F or -20°C to 1100°C
Display	LCD
Accuracy	± 1%FS
Adjustable differential	1° to 25° Centered around set point
Control mode	ON-OFF
Maximum load current	10 Amp, 250 VAC Resistive SPDT Relay
Power Consumption	2 VAC
Supply voltage	120 VAC or 220 VAC, 50/60Hz.
Operating temperature	32°F to 140°F (0° to 60°C)
Panel mounting	3 5/8" x 1 13/16" Cut-out (92mm x 45mm)

Model No.

401JF	110 VAC Fahrenheit Model
401JC	110 VAC Celsius Model
401JF220	220 VAC Fahrenheit Model
401JC220	220 VAC Celsius Model

TA6	TA7	TA3	TAP4
2	1	1	4
-10°F to 80°F (-25°C to 30°C, Celsius model)	-10°F to 80°F (-25°C to 30°C, Celsius model)	-50°F to 170°F (-30°C to 96°C, for Celsius model)	-40°F to 60°F and 0°F to 100°F (-18°C to 38°C and -40°C to 16°C, Celsius model)
Encapsulated sensor with 6 ft. cord	Encapsulated sensor with 6 ft. cord	Encapsulated sensor with 6 ft. cord	Encapsulated sensor with 15 ft. cord (4 included)
Thermistor	Thermistor	J-Type Thermocouple	Thermistor
200ft.	100ft.	2000ft.	300ft.
	± 2°F at 75°F ambient		
Screw type, 120 VAC, 5 Amp max., (dry contacts) 120 V AC (220 V optional)	None 9 V alkaline battery (not included)	Screw type 120 VAC, 0.1 Amp max., (dry contacts) 120 V AC (220 V optional) 9V alkaline battery (not included)	Terminal strip screw connection 120VAC, 5 Amps max., (dry contacts) 110V or 220V power adapter supplied 9V alkaline battery (not included)
Hi-impact thermoplastic	Hi-impact thermoplastic	Panel mount	NEMA 3 Type
Surface, external holes are provided 3" x 4 7/8" x 1 5/8"	Surface, adhesive pads/keyhole slot 5 3/4" x 1 1/2" x 1"	Face panel (1 3/4" x 3 5/8" cut out required) 1 11/16" x 3 9/16" x 5 3/16"	Surface, keyhole or recessed screws 6" x 7 1/2" x 3"
13oz	5oz	24oz	1.9 Lbs (0.86kg)
1 year	1 year	1 year	1 year



Application Note:

Many supermarkets have added free standing, portable case displays for seafood, sushi, sandwich preparation, bakery goods and more. These cases are not tied to the central monitoring system. The TAP4 is an ideal instrument for preventing food spoilage in these areas. It's inexpensive, easy to install and monitors up to 4 different temperature sensitive applications.



New Style!



MFD10 Digital Capacitor Tester

With it's one hand operation, the MFD provides the fastest measurements for capacitor values.

Applications

- Verification of Start and Run Capacitors
- Checks for open and short capacitors
- Identify unmarked capacitors
- Confirms weak capacitors
- Use as continuity tester

Features/Benefits

- Range 0.01 to 10,000 mF
- Accuracy $\pm 5\%$
- Test clip storage within case
- Alligator clips to capacitor terminals
- LED display
- One button operation
- Operates on one 9V Battery (not included)



Standard Accessories

Part No.

MFDCASE	Soft Case
MFDfuse	Fuse

CO1000 *New!* Carbon Monoxide Meter

Measure CO quick and easy in working and living environments.

Applications

- Check dangerous CO levels
- Identify malfunctioning equipment

Features/Benefits

- Backlit LCD
- Automatic calibration
- Max Hold and Data Hold
- Auto Power Off
- Audible Alarm
 - From 35 PPM to 200 PPM, the beeper sounds periodically
 - Above 200 PPM, the beeper sounds continuously



Specifications

Measurement range	0 to 1000 PPM
Measurement Resolution	1 PPM
Accuracy	5% or ± 10 PPM (0-100 PPM) 10% ± 10 PPM (> 100PPM)
Warm Up Period	< 2 Seconds
Operating Temperature	32°F to 122°F (0°C to 50°C)
Storage Temperature	-22°F to 140°F (-30° to 60°C)
Operating Humidity	0-99% Relative Humidity (non-condensing)
Battery	9V (included)
Auto Power Off	After 15 minutes of inactivity
Sensor Type	Stabilized electrochemical Gas-specific (CO)
Typical Sensor Life	3 years

New Style!



M500 Insulation Tester/Electronic Megohmmeter

An inexpensive alternative to expensive taut band (swing needle) megohmmeters, the M500 provides fast and accurate measurements to verify the condition of insulation.

Applications

Test motor winding insulation and diagnose heat damaged, deteriorating insulation in...

- Hermetic Refrigeration compressors
- Appliances
- Panel boards
- Relay control circuits
- Motors

Features/Benefits

- Measure insulation values up to 1000 megohms @ 500 VAC
- Zone scale to indicate insulation condition
- Hand held
- Test Leads store in case
- Operates on 2 C batteries (not included)
- Impact resistant

Standard Accessories

Part No.

MCASE	Soft case
-------	-----------



DAM1 Digital Air Flow Meter

Measuring cubic feet per minute, feet per second and temperature make balancing air systems a breeze with the DAM1.

Applications

- Balancing air flow
- Identify problem ventilation areas

Features/Benefits

- Measures Cubic feet per minute (CFM) and feet per second (FPS)
- Air Flow range 80 – 6900 FPM
- Measures Temperature in °F and °C (14°F to 122°F/-10°C to 50°C)
- Displays: CFM/FPM/MPH/Knots/KPH/MPS
- Dual display
- Auto Power Off
- Records up to 8 readings
- Min/Max record
- One hand operation
- Comes in durable carry case



M501 Insulation Tester/Electronic Megohmmeter

Enjoy the same great features of the M500 in a sturdy service case.





DHS55 Digital Handheld Scale

This compact handheld scale provides quick measurements for your refrigeration applications.

Features/Benefits

- 55 lbs max scale
- 2% accuracy
- One button operation
- Auto shut off
- Lbs/Kgs switchable
- Max weight memory
- 9 V battery included



CTC3 Cap Tube Computer

Calculate the flow rate of a defective cap tube and duplicate that flow rate with cap tubes that have a different I.D.

Features/Benefits

- Computes inside diameter, length, refrigerant, horse power, application and flow rate
- Shows temperature/pressure charts for 12 refrigerants
- Compact, light weight & easy to use!
- Converts Cap Tubing used with refrigerants R12, 134A, R22, and R502

Note: See Cap Tubing Section pages 31-33 for a complete listing of Cap Tubing Replacements used with alternative refrigerants.

Specialty Instrument Selection Guide

Model No.	Measurement/Function	Range
CO1000	Carbon Monoxide	0 to 1000 PPM
MFD10	Capacitance	0.01 to 10,000 mfd
DAM1	Air Flow/Temperature	125 to 5500 fpm/14°F to 122°F
M500	Insulation Resistance	20 to 1000 megohms
M501	Insulation Resistance	20 to 1000 megohms
DHS55	Weight	0 to 55 lbs
CTC3	Cap Tube parameters	Various

Application Note:

Testing HVAC and Refrigeration Compressors and Motors

Many HVAC and Refrigeration motors require special test parameters since the winding operates in an oil and refrigerant atmosphere.

In a hermetic motor, under normal conditions the oil and refrigerant have a high electrical resistance. However, when they are contaminated with moisture, the electrical resistance changes and a low megohm reading of the winding terminal to ground may actually be the resistance of the contaminants in the oil and not in the winding insulation.

Newer motors have a insulation resistance value of more than 100 megohms, typically. Measurements of 50 megohms or less indicate a problem. Either the winding insulation is deteriorating or the oil/refrigerant is contaminated.

Installing an oversized drier may clean up the system or another possible solution could be replacing all the compressor oil. In either case, if the megohm tests show even the slightest improvement in resistance values the remedy may have checked a declining condition.

A good 'rule of thumb' is to smell a small sample of the oil. If the motor was ever severely overloaded, it will leave a tell tale trace in the oil that can only be removed by changing all of it.

The odor of burnt insulation is easily recognized and a low resistance value of 20 megohms or less will verify that the motor insulation may be severely damaged.



LOGiT Series

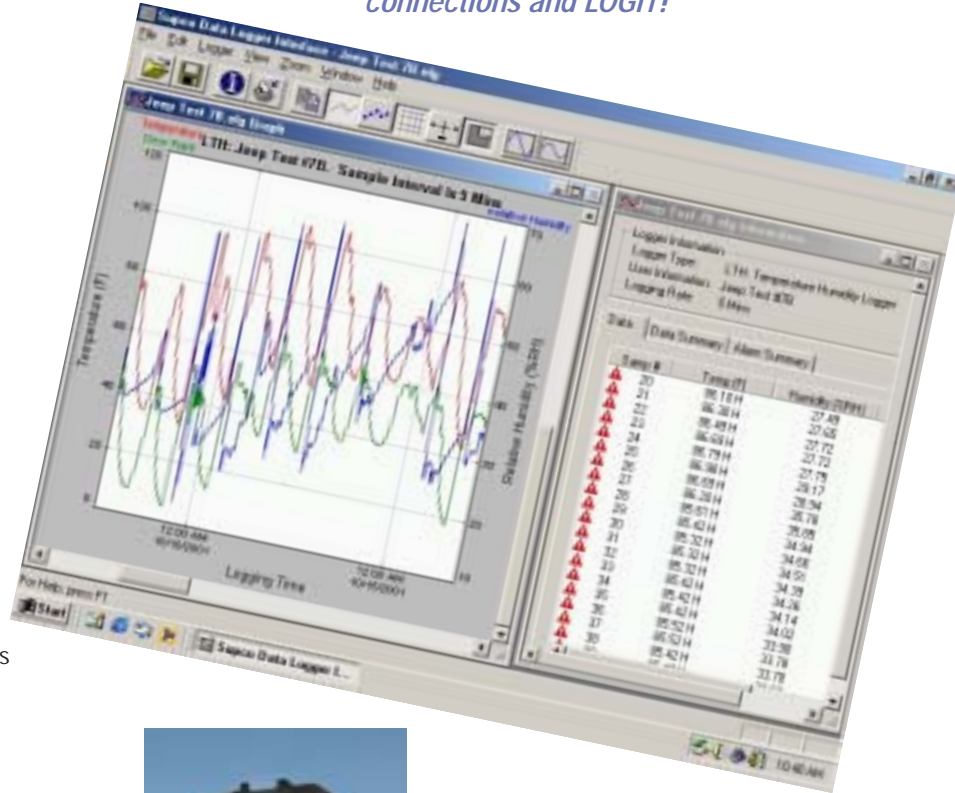
Data Loggers

Premier Data Loggers; designed with the latest technology to accommodate technological advances for years to come. They are economic, compact and easy to use.

Select the right LOGiT Data Logger for your application along with the Windows compatible LOGiT PC Software and Interface Cable (LLS). Then...

Choose a sample rate, make desired connections and LOGiT!

MADE IN THE USA



Features/Benefits

- Store over 10,000 measurement points
- 1 second to 18 hour sample rate; 1 second increments
- Custom user identification (30 characters)
- Real Time data monitoring
- Over/Under Alarm threshold settings
- Visual alarm indication
- User selectable Recording Start (Specified date & time, immediate after setup or on door close)
- Tamper proof
- 20 month battery life (at 1 minute sample rate)
- Data rollover option
- Unique logger ID
- One PC Software operates with all loggers (LLS not included)
- Graphic or text data
- Zoom capability
- USB interface optional (USBS)
- 1 year warranty

Logger Selections*

- LT2** Temperature Logger (internal and external)
- LTC** Thermocouple Temperature Logger
- LTT** Dual Temperature Logger with 2 external temperature probes
- LTH** Temperature and Humidity Logger
- LPT** Pressure and Temperature Logger
- LCV** AC Current and Voltage Logger
- L420** 4 – 20 ma Logger

*Note: Logger needs optional LLS Software package to program data logger and download data for analysis. It is not included with any LOGiT data logger.

*Note: The SUPCO LOGiT and DL Series Loggers are NOT compatible.



LLS LOGiT PC Software and Interface*

- PC Software on CD ROM
- LINT Interface
- Cable for LOGiTs to Serial Port (CABLE6)

Benefits/Specifications

- Compatible with Windows 95 and above
- Graphic and Text Data
- 3 Memory modes: Stop on full, record continuously, or memory rollover
- Real time monitoring
- Password protected calibration of each channel
- Data exportable to Text or Excel
- Maximum Serial Interface 50 feet.
- Minimum System Requirements: 8MB RAM, 2MB Disk Space, 800 x 600 Resolution, COM port or USB port (Optional USB Interface required)

Data Loggers

For Temperature and Temperature/Humidity Sensitive Applications:

- Refrigerators/Freezers
- Commercial Refrigeration Systems
- Medical Storage Facilities
- Laboratories
- Greenhouses
- Florists
- Museums

Select the right Logger for your application...

LT2 Temperature Logger (Internal & External)

- One Internal and One External Temperature Measurement, Simultaneously



LTT Dual Temperature Logger

- 2 Independent External Temperature Measurements & Temperature Differential



LTC Thermocouple Temperature Logger

- One internal and one external (J, K, E, T, R, S Thermocouples) temperature measurement



LTH Temperature/ Humidity Logger

- Integral Temperature, Humidity and Dew Point Measurements



New!

TAL2 Dual Temperature Alarm Logger

- Set high and low alarms for (2) temperature sensitive applications, and track their temperature trends, simultaneously.
- For complete specifications see listing under Temperature Alarms pages 167-169



New!

For Pressure and Temperature Sensitive Applications:

- Compressor Run Cycles
- Testing New Installations
- Pneumatic air lines
- Tracking Intermittent Problems
- Superheat Measurements

LPT Pressure and Temperature Logger

- External Pressure and Temperature Measurements



For Simultaneous Single Phase Current and Voltage Monitoring:

- Compressor and Fan Run Cycles
- Troubleshooting Intermittent problems
- Verification of Power Conditions
- Use three LCV's for Three Phase Applications

LCV Current and Voltage Logger

- External Current Probe and Voltage Measurements



For Monitoring 4 – 20 ma Process control loops in:

- Manufacturing
- Package Handling
- Automated Test Systems

L420 4 – 20 ma Logger

- Connection for 4 – 20 ma loop measurements

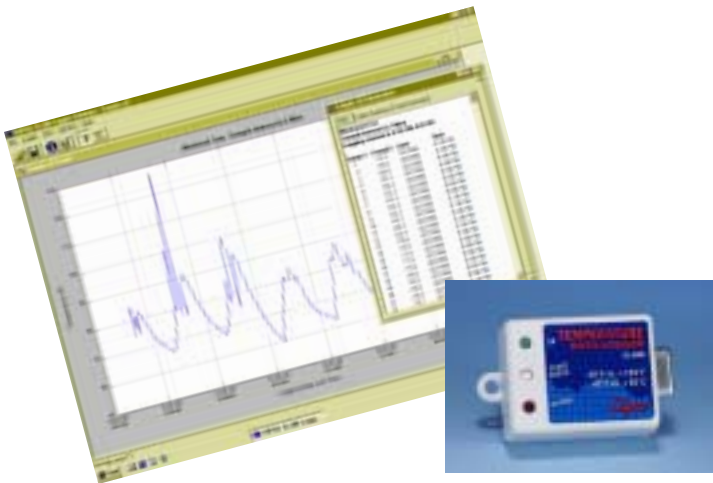


SL200C

Easy to use and self-contained, the miniature SL200C data logger is designed to record the temperature of the surrounding environment.

Features/Benefits

- Windows 95, 98, 2000, NT, ME & XP compatible software (included)
- PC or push button recording control
- Temperature alarm with visual indication on demand
- User selectable stop on memory full or memory rollover for continuous recording
- View graph & text simultaneously
- Can calibrate in the field
- Displays temperature in °F or °C
- RS-232 Interface (No Special Cable Required)
- USB Interface optional (USBS)



Data Logger Specifications

	L2	LTH	LTC	LTT
Sample Point Capacity	21,500 points (Single channel) 10,750 points and differential (Dual channel)	21,500 for temperature only 10,750 points for Temperature, Humidity and Dew Point	10,750 points for external and internal temperature	21,500 temperature points (1 probe) 10,750 temperature points and differential (2 probes)
Sampling Rate	1 second to 18 hours	1 second to 18 hours	1 second to 18 hours	1 second to 18 hours
Alarms	Over and under alarms for each probe.	Over and under alarms for temperature & humidity.	Over and under alarms for each probe	Over and under alarms for each probe.
Temperature Range (Internal Sensor)	32°F to 140°F (0°C to 60°C) w/ Alkaline Battery -40°F to 150°F (-40°C to 65°C) w/ Lithium Battery	32°F to 40°F (0°C to 60°C) w/ Alkaline Battery -40°F to 150°F (-40°C to 65°C) w/ Lithium Battery	32°F to 140°F (0°C to 60°C) w/ Alkaline Battery -40°F to 150°F (-40°C to 65°C) w/ Lithium Battery	
Temperature Range (External Sensor)	-40°F to 150°F (-40°C to 65°C)		Depends on thermocouple (J, K, E, T, R, S)	-50°F to 300°F (-46°C to 150°C)
Accuracy	±1.0°F (0.5°C)	±2°F (1°C)	Depends on thermocouple	±2°F (1°C)
Resolution	0.1°F (0.05°C)	0.1°F (0.05°C)	0.1°F (0.05°C)	0.1°F (0.05°C)
Time Accuracy	±100ppm @75°F	±100ppm @75°F	±100ppm @75°F	±100ppm @75°F
Relative Humidity Range		0% to 99.9% RH, Non-condensing.		0% to 95% RH, non-condensing
Relative Humidity Accuracy		±2% full scale, from 0% to 95% RH for temperatures between 32°F and 140°F (0°C to 60°C)		
Relative Humidity Resolution		0.1% RH		
Pressure Range				
Pressure Accuracy				
Pressure Resolution				
Pressure Connection				
Input Current Range				
Current Accuracy				
Current Resolution				
Voltage Range				
Voltage Accuracy				
Voltage Resolution				
Temperature using Alkaline Battery	32°F to 140°F (0°C to 60°C)	32°F to 140°F (0°C to 60°C)	32°F to 140°F (0°C to 60°C)	32°F to 140°F (0°C to 60°C)
Temperature using Lithium Battery	-40°F to 150°F (-40°C to 65°C)	-40°F to 150°F (-40°C to 65°C)	-40°F to 150°F (-40°C to 65°C)	-40°F to 150°F (-40°C to 65°C)
Operating Range Humidity	0% to 95% RH, Non-condensing	0% to 99.9% RH, Non-condensing		
Storage Temperature	-40°F to 170°F (-40°C to 77°C)	-40°F to 170°F (-40°C to 77°C)	-40°F to 170°F (-40°C to 77°C)	-40°F to 170°F (-40°C to 77°C)
Calibration	Single point offset calibration available through software.	Single point offset calibration available through software. Humidity is factory calibrated.	Single point offset calibration available through software.	Single point offset calibration available through software.
Dimensions	3" x 2.5" x 1.1" (7.6cm x 6.4cm x 2.8cm)	3" x 2.5" x 1.1" (7.6cm x 6.4cm x 2.8cm)	3" x 2.5" x 1.1" (7.6cm x 6.4cm x 2.8cm)	3" x 2.5" x 1.1" (7.6cm x 6.4cm x 2.8cm)
Weight	2.5 Oz (71g)	2.5 Oz (71g)	2.5 Oz (71g)	2.5 Oz (71g)
Power Source	9V Alkaline or Lithium battery (not included)	9V Alkaline or Lithium battery (not included)	9V Alkaline or Lithium battery (not included)	9V Alkaline or Lithium battery (not included)
Battery Life (average use)	18 Months using Alkaline Battery 36 Months using Lithium Battery	20 Months using Alkaline Battery 40 Months using Lithium Battery	20 Months using Alkaline Battery 40 Months using Lithium Battery	20 Months using Alkaline Battery 40 Months using Lithium Battery



HTHL10 Temperature Humidity Logger

With its triple display, the HTHL10 provides instant measurements and trend analysis for temperature and humidity

Features/Benefits

- RS-232 Interface With Windows Software
- 16,000 Records Data Logger
- Auto Power Off
- TIME Function
- HOLD Function
- MIN/MAX Function
- Resolution 0.1°C, 0.1°F
- Dual Input
- Compatible with Windows 95, 98, 2000, NT, and ME.
- Triple Display

LPT	LCV	L420	SL200C	HTHL10
10,750 points for Pressure & Temperature 21,500 points for Pressure OR Temperature	10,750 points for Current & Voltage 21,500 points for Current OR Voltage	21,500 points	2048 Temperature Samples	16,241 records
1 second to 18 hours Over and under alarms for Pressure & Temperature	1 second to 18 hours Over and under alarms for current and voltage	1 second to 18 hours Over and under alarm	1 to 255 minutes High and Low Temperature Alarms w/ visual indication on demand	
-40°F to 150°F (-40°C to 65°C)			-40°F to 185°F (-40°C to 85°C)	-4°F to +140°F, -328°F to +2498°F... +/-0.3%rdg+2°F -20°C to +60°C -200°C to +1370°C... +/-0.3%rdg+1°C ±1.4°F (±0.7°C)
±1°F (0.5°C) 0.1°F (0.05°C) ±100ppm @75°F	±100ppm @75°F	±100ppm @75°F	±1°F (±0.5°C) ±1°F (±0.5°C)	
				0 to 100% RH ±2.5% RH
				0.1% RH
0 – 500 psi ±3 psi 0.15 psi 1/4" MPT Pressure Sensor Connection				
	0-300 Amps ±5% 0.1 Amp AC 0 – 500 Volts AC ±1 V AC 0.1 V AC	0 – 40 ma ±0.05 ma 0.01 ma		
32°F to 130°F (0°C to 54°C) -40°F to 150°F (-40°C to 65°C) 0% to 95% RH, Non-condensing -40°F to 170°F (-40°C to 77°C)	32°F to 130°F (0°C to 54°C) -40°F to 150°F (-40°C to 65°C) 0% to 95% RH, Non-condensing -40°F to 170°F (-40°C to 77°C)	32°F to 140°F (0°C to 60°C) -40°F to 150°F (-40°C to 65°C)		32°F to 120°F (0°C to 50°C)
Single point offset calibration available through software. Pressure is factory calibrated.	Single point offset calibration available through software. Current and Voltage are factory calibrated.	Single point offset calibration available through software.	Single point offset calibration available through software.	Password Protected Calibration
3" x 2.5" x 1.1" (7.6cm x 6.4cm x 2.8cm) 2.5 Oz (71g) 9V Alkaline or Lithium battery (not included)	3" x 2.5" x 1.1" (7.6cm x 6.4cm x 2.8cm) 2.5 Oz (71g) 9V Alkaline or Lithium battery (not included)	3" x 2.5" x 1.1" (7.6cm x 6.4cm x 2.8cm) 2.5 Oz (71g) 9V Alkaline or Lithium battery (not included)	1.75" x 0.87" x 0.87" 3.0 Volt Lithium (CR2032) (included)	7.3" x 2.5" x 1.2" (186 x 64 x 30mm) Approximately 11.25 oz, (320g) 9V battery (included) N/A
19 Months using Alkaline Battery 38 Months using Lithium Battery	20 Months using Alkaline Battery 40 Months using Lithium Battery	20 Months using Alkaline Battery 40 Months using Lithium Battery	3.5 Years Average	



Palm™ to LOGiT Interface Kit*

Store data from multiple LOGiT data loggers to your Palm™ and download it to your PC when it's convenient for you. You can also view the data for instant analysis and program your logger easily.

New!

LOGiT Series



Kit Includes:

- PC & Hotsync Software on CD ROM
- PLINT Interface and cables

Features

- Download data from multiple LOGiT loggers to your Palm™.
- Store approximately 30 logger files per 1MByte of free handheld memory.
- View the LOGiT data on your handheld (text format).
- Check the LOGiT logger status.
- Setup the LOGiT logger for a new logging session.
- End the currently active logging session.
- Import logger data stored in your Palm™ to your PC.
- Export logger data stored on your PC to your Palm™.

Minimum System Requirements:

- Palm™ OS Version 3.3 and above, running on one of the Palm™ units in the Compatible Devices table below, with at least 128KBytes free memory.
- Palm™ Desktop Software Version 3.0.1 and above, running on Windows 95 or above (Can be downloaded from www.palm.com).
- LOGiT PC Interface Software Version 2.00 or above (included in this kit)

Model Supported Handheld Devices (not included)

LPI3	Palm™ III / IIIe / IIIx / IIIxe / IIIc, Palm™ VII / VIIx, IBM Workpad
LPI5	Palm™ V / Vx, IBM Workpad C3
LPIM100	Palm™ m100 / m105
LPIM500	Palm™ m125 / m130, Palm™ m500 / m505 / m515, Palm™ i705, Palm™ TUNGSTEN T2/T3/W/C (Not compatible with TUNGSTEN E, Palm™ Zire 71 (not compatible with the original Palm™ Zire or the Zire 21), IBM Workpad C500/C505

Note: Not compatible with Handspring and Sony CLIE models

For latest compatibility information, check our website at www.supco.com/palm.htm



* This kit does not include a Palm™ PDA.

Data Logger Accessories

Standard Accessories		LT2	LTH	LTC	LTT	LPT	LCV	L420	SL200C	HTHL10
14265	15' Remote									
	Temperature Sensor	*				*				
DLTP6	4" Stainless Steel									
	Temperature Sensor		*		(2)					
TPFDA	K-type Thermocouple with			*						
	4' FDA Approved Insulation									
12261	Pressure Sensor					*				
12867	300 A Current Probe†						*			
13495	Cable								*	
12782	Battery								*	
Optional Accessories										
LITH9B	Lithium Battery	*	*		*	*	*	*		
USBS	USB to Serial Interface	*	*		*	*	*	*	*	
LLS	LOGiT PC Software & Interface	*	*	*	*	*	*	*		
LPI3	Palm to LOGiT Interface	*	*	*	*	*	*	*		
LPI5	Palm to LOGiT Interface	*	*	*	*	*	*	*		
LPIM100	Palm to LOGiT Interface	*	*	*	*	*	*	*		
LPIM500	Palm to LOGiT Interface	*	*	*	*	*	*	*		
SW25	25' Temperature Probe	*				*				
	Extension Wire									
SW50	50' Temperature Probe	*				*				
	Extension Wire									
SW75	75' Temperature Probe	*				*				
	Extension Wire									
SW100	100' Temperature Probe	*				*				
	Extension Wire									

†Current probe must be factory calibrated with LCV logger,

SR Series Strip Chart Recorders

New!

The SR Series Strip Chart Recorders provide long length recordings with maximum detail. Choose the model that suits your application.

Features/Benefits:

- LCD alphanumeric display
- Adjustable chart speed (1/4 inch per hour to 2 inches per minute)
- Recording length: 2 hours to 40 days
- Over / Under Alarm with 100ma N.O. Relay and audible alarm
- Delay / No Delay Alarm
- Battery backup
- 220 V operation (optional)
- RS-232C port
- Use A inches or mm charts
- Field calibrated with user adjustment
- Free standing or wall mount



SRTH

6 Models

SRB Temperature Recorder

Applications

- Refrigeration/ Freezer, Laboratory and Environmental applications
- Measures and records temperature in air, gas, liquids, powders, solids and semi-solids

Features/Benefits

- Temperature Ranges: -40°F to 150°F (-40°C to 60°C)
- Remote readings from up to 100 ft. (CABLE 10T optional)
- Programmable speed and temperature ranges

SRJ J-Type Thermocouple Temperature Recorder

Applications

- Broad temperature range
- Measures and records temperature in air, gas, liquids, powders, solids and semi-solids

Features/ Benefits

- Temperature Ranges: -40°F to 1000°F (-40°C to 500°C)
- Remote readings from up to 2000 ft. (Use TCW25, TCW50, TCW75, TCW100)
- Programmable speed and temperature ranges

SRV AC Voltage Recorder

Applications

- Line voltage
- Intermittent voltage problems

Features/Benefits

- Voltage Range: 0 to 500 VAC, single phase
- Programmable speed and voltage ranges
- Use 3 recorders for 3 phase applications
- Use 3 SRVS for 3 phase applications

SRTH Temperature/ Humidity Recorder

Applications

- Monitor critical temperature and humidity simultaneously

Features/Benefits

- Temperature Ranges: -40°F to 150°F (-40°C to 60°C)
- Humidity Range: 0 to 100% RH
- Programmable speed and temperature ranges

SR420 4 to 20 ma and DC voltage Recorder

Applications

- Verification of process control loops

Features/ Benefits

- Current Range: 0 to 20 mA
- Voltage Range: 0 to 5 VDC
- Programmable speed and current and voltage ranges

SRC AC Current Recorder

Applications

- Load distribution
- Compressor and fan run cycles

Features/Benefits

- Current Range: 0 to 300 Amps AC, single phase (current probe included)
- Programmable speed and current ranges
- Use 3 recorders for 3 phase applications
- Use 3 SRCS for 3 phase applications



SR Series Common Specifications

Display	Alphanumeric LCD 16 Characters 2 Line		Operating ambient temperature range	32°F to 125°F (0° to 50°C)
Chart	Strip chart (20' x 4 3/4")		Storage temperature	0° to 125°F (-18° to 50°C)
Chart Speeds	1/4 inch/hour	1/2 cm/hour	Primary power	115 VAC, 50/60 Hz Adapter (220-240 VAC, 50 Hz. optional)
	1 inch/hour	2 cm/hour	Backup power	8 AA alkaline batteries (not supplied)
	2 inches/hour	4 cm/hour	Alternative power	12 Volt vehicle operation with optional adapter
	4 inches/hour	8 cm/hour	Power Consumption	3.5 Watts Max.
	8 inches/hour	16 cm/hour	Mounting	Vertical or Horizontal, Free Standing or Wall Mounted
	1/4 inch/minute	1/2 cm/minute	Dimensions	9.25" x 7.25" x 2" (235mm X 184mm X 51mm)
	1/2 inch/minute	1 cm/minute	Weight	2.5 lb. (1.3 kg)
	1 inch/minute	2 cm/minute		
2 inches/minute	4 cm/minute			
Chart Speed Accuracy	+/- 1 %			
Alarm Delay Range	No Delay, 10 Min., 30 Min., 1 Hr., 90 Min. or 2 Hr.			
Remote Alarm Connection	N.O. 48 VAC/DC, 0.1 Amp Dry Contacts			

SR Series Specifications

	SRB	SRJ	SRV	SRC	SR420	SRTH
Range	-40°F to 150°F (-40°C to 60°C)	-40° to 1000°F (-40° to 500°C)	0 to 500 VAC	0 to 300 Amps AC using supplied clamp-on probe	0-5.0 Volts DC 0-20ma DC 4-20ma DC	-40 to 150°F (0 to 60°C) 0 - 100% RH
Chart Ranges	-40°F to +60°F -40°C to +60°C +50°F to +150°F -30°C to +20°C 0°F to 100°F 0°C to +50°C	-40°F to +60°F -40°C to +60°C +0°F to +250°F -30°C to +20°C 50°F to 150°F 0°C to 50°C 0°F to 100°F 0°C to 100°C 0°F to 500°F 0°C to +500°C 0°F to 1000°F	0 to 50 VAC 0 to 100 VAC 50 to 150 VAC 0 to 250 VAC 0 to 500 VAC	0 to 10 AMP 0 to 50 AMP 0 to 100 AMP 50 to 150 AMP 0 to 250 AMP	0 to 5.00 Volts +/- 0.01 Volt 0 to 100 mV +/- 1 mV 0 to 20 ma +/- 0.1 ma 4 to 20 ma +/- 0.1ma	-40°F to +60°F -40°C to +60°C +50°F to +150°F -30°C to +20°C 0°F to 100°F 0°C to +50°C
Accuracy	+/- 2°F (+/- 1°C)	+/- 2°F (+/- 1°C)	+/- 0.5 VAC	+/- 5%	0 to 5.00 Volts +/- 0.01 Volt 0 to 100 mV +/- 1 mV 0 to 20 ma +/- 0.1 ma 4 to 20 ma +/- 0.1ma	+/- 2°F (+/- 1°C) +/- 2% (0 - 95% RH)
Probe	TP15 Temperature probe with 15' cable (cable extension is available)	6' High Temperature Thermocouple Probe	3' Voltage leads with Alligator clips	0-300 Amp AC Current Probe		KTH Temperature/ Humidity with 6' cable
Alarm Range	-40°F to +150°F (-40°C to 60°C)	-40° to +1000°F (-40°C to +500°C)	0 to 500 VAC	0 to 300 A	0 to 20 ma (DC) 0 to 5 Volts (DC) 0 to 100 mV (DC)	40° to +150°F (-40° to +60°C) 0 to 100% RH

SR Series Accessories

	SRB	SRJ	SRV	SRC	SR420	SRTH
ADTA Automatic Dialer	*	*	*	*	*	*
CABLE10H Extension cable for KTH						*
CABLE10T 10' cable	*					
CABLE15 15 ft. cable for sensor probes						*
CABLE25 25 ft. cable for sensor probes						*
CABLE6 6 ft. cable for sensor probes						*
CR4 Cable	*	*	*	*	*	*
CRPEN Black Pen	*	*	*	*	*	*
CRPENB Blue Pen	*	*	*	*	*	*
CRPENR Red Pen	*	*	*	*	*	*
CRT Power Adapter	*	*	*	*	*	*
CRT220 Power Adapter	*	*	*	*	*	*
CRT220UK Power Adapter	*	*	*	*	*	*
HTP5 6' high temperature thermocouple wire			*			
HTP5100 100' high temperature thermocouple wire		*				
HTP515 15' high temperature thermocouple wire		*				
HTP525 25' high temperature thermocouple wire		*				
HTP550 50' high temperature thermocouple wire		*				
KTH Temperature Humidity Probe						*
RA25 Remote Alarm	*	*	*	*	*	*
SCR11 Strip Chart (American Scale)	*	*	*	*	*	*
SCR12 Strip Chart (Metric Scale)	*	*	*	*	*	*
SRMAL Low voltage/ ma leads					*	
SRVLA Voltage leads with Alligator clips			*			
TCW100 Type J Thermocouple Wire - 100' wire only		*				
TCW25 Type J Thermocouple Wire - 25' wire only		*				
TCW50 Type J Thermocouple Wire - 50' wire only		*				
TCW75 Type J Thermocouple Wire - 75' wire only		*				
TP15 15' wire with 4" stainless steel sensor	*					

Note: Replacement current probe must be calibrated at factory.

The CR87 Six(6) Inch Chart Recorder Series set the standard for reliable and rugged trend reporting. Choose the right model for your application.



Features/Benefits

- Micro-controller design
- Large LED Display
- Front Panel controls
- Single or continuous chart rotation
- Choose from 120V or 220V models (see chart)
- Battery Backup
- 12 V operation
- Comes with 2 cartridge pens & 60 (6" dia.) assorted charts
- Convenient folding handle
- Snap-on support legs
- Free standing or wall mount
- Weatherproof NEMA type 4X (CSA type 4) case optional



CR87B
Temperature Recorder

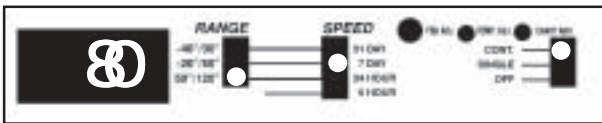
Applications

- Designed for Refrigeration/Freezer, Laboratory and Environmental Applications
- Measures and records temperature in air, gas, liquids, powders, solids, and semi-solids

Features/Benefits

- Temperature range: -40°F to 120°F (-40°C to 50°C)
- Remote readings from up to 100 ft. (optional sensor wire p/n CABLE10T)
- Programmable speed and temperature ranges

Front Panel View



Model No.	Temp. Reading In	Operating Voltage
CR87B	FAHRENHEIT	110-120V, 50/60 Hz
CR87BC	CELSIUS	110-120V, 50/60 Hz
CR87B220	FAHRENHEIT	220-240V, 50/60 Hz
CR87B220C	CELSIUS	220-240V, 50/60 Hz



CR87HT
High Temperature Recorder

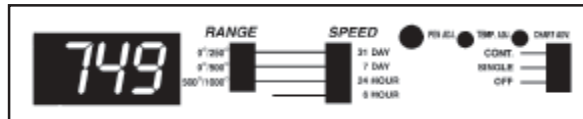
Applications

- Broad range of Temperature Applications
- Measures and records temperature in air, gas, liquids, powders, solids, and semi-solids

Features/Benefits

- Temperature range: 0°F to 1000°F (0°C to 500°C)
- Remote readings from up to 2000 ft. (See accessory table)
- Programmable speed and temperature ranges

Front Panel View



Model No.	Temp Reading In	Operating Voltage
CR87HT	FAHRENHEIT	110-120V, 50/60 Hz.
CR87HT22C	CELSIUS	220-240V, 50/60 Hz.



CR87P Pressure Recorder



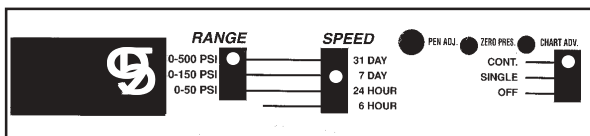
Applications

- Run Cycles
- Pneumatic air lines
- Test New installations
- Track intermittent problems

Features/Benefits

- Pressure Range 0 to 500 PSI (0 to 35 BAR)
- Stainless steel 17-4 Pressure sensor with port ¼ NPT
- 2500 PSI burst pressure
- Rated for any gas or fluid compatible with 17-4 stainless steel
- Programmable speed and pressure ranges

Front Panel View



Model No.	Pressure Reading In	Operating Voltage
CR87P	PSI	110-120V, 50/60Hz.
CR87P220	PSI	220-240V, 50/60Hz.
CR87PB	BAR	110-120V, 50/60 Hz.
CR87PB220	BAR	220-240V, 50/60 Hz.

CR87V Voltage Recorder



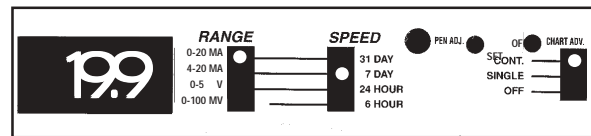
Applications

- Low Voltage or 4-20 ma control circuits
- Process control applications
- Manufacturing

Features/Benefits

- Choose voltage or current measurements
- Voltage Range 0 – 5V
- Current Range 0 – 20 ma
- Programmable speed and voltage or current ranges

Front Panel View



Model No.	Operating Voltage
CR87V	110-120V, 50/60Hz.
CR87V220	220-240V, 50/60Hz.

CR87E Event Recorder



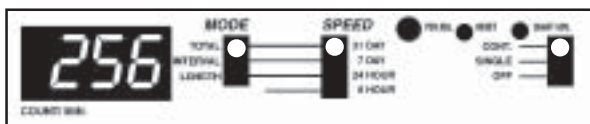
Applications

- Time Studies
- Usage Tests
- Verification Tests

Features/Benefits

- Complete with probes for Voltage, Sound and Light
- Displays length of event, time between events or total events
- Programmable speed and event information

Front Panel View



Model No.	Operating Voltage
CR87E	110-120 VAC, 50/60 Hz
CR87E220	220-240 VAC, 50/60 Hz

Custom Series Temperature Recorder



The Custom Series 6 Inch Temperature Recorders have the same general features as the CR87 Series, with the ability to customize your temperature measurement range. The custom unit has an internal temperature sensor and can be placed directly in the environment that it will monitor.

Applications

- Designed for Refrigeration/ Freezer, Storage areas, Laboratories, Computer Rooms, etc.
- Custom temperature range means exact application needs.

Features/Benefits

- Internal Bi-metal Sensor
- Custom Temperature and Speed Selection
- 9V Battery Operation (not included)
- AC Adapter (included)(see accessory table)

Model No. w/Display	Temp. Range	Record Time	Model No. Without Display	Temp. Range	Record Time
SD120F7	-20°F to 120°F	7 Days	SR120F7	-20°F to 120°F	7 Days
SD120F24	-20°F to 120°F	24 Hrs	SR120F24	-20°F to 120°F	24 Hrs
SD100F7	0°F to 100°F	7 Days	SR100F7	0°F to 100°F	7 Days
SD100F24	0°F to 100°F	24 Hrs	SR100F24	0°F to 100°F	24 Hrs
SD90F7	45°F to 90°F	7 Days	SR90F7	45°F to 90°F	7 Days
SD90F24	45°F to 90°F	24 Hrs	SR90F24	45°F to 90°F	24 Hrs
SD50C7	-30°C to 50°C	7 Days	SR50C7	-30°C to 50°C	7 Days
SD50C24	-30°C to 50°C	24 Hrs	SR50C24	-30°C to 50°C	24 Hrs
SD45C7	0°C to 45°C	7 Days	SR45C7	0°C to 45°C	7 Days
SD45C24	0°C to 45°C	24 Hrs	SR45C24	0°C to 45°C	24 Hrs

Recording Charts

CR87B Series Recording Charts

CR87B Models				
Temp. Range	6 Hrs.	24 Hrs.	7 Days	31 Days
-40°F to 30°F	CR87-4	CR87-1	CR87-7	CR87-19
-20°F to 50°F	CR87-5	CR87-2	CR87-8	CR87-20
50°F to 120°F	CR87-6	CR87-3	CR87-9	CR87-21
-40°C to 0°C	CR87-13	CR87-10	CR87-16	CR87-22
-30°C to 10°C	CR87-14	CR87-11	CR87-17	CR87-23
10°C to 50°C	CR87-15	CR87-12	CR87-18	CR87-24

CR87HT Models				
Temp. Range	6 Hrs.	24 Hrs.	7 Days	31 Days
0°F to 250°F	CR1000-4	CR1000-1	CR1000-7	CR1000-19
0°F to 500°F	CR1000-5	CR1000-2	CR1000-8	CR1000-20
500°F to 1000°F	CR1000-6	CR1000-3	CR1000-9	CR1000-21
0°C to 120°C	CR1000-13	CR1000-10	CR1000-16	CR1000-22
0°C to 250°C	CR1000-14	CR1000-11	CR1000-17	CR1000-23
250° to 500°C	CR1000-15	CR1000-12	CR1000-18	CR1000-24

CR87P Series Recording Charts

Range	6 Hrs.	24 Hrs.	7 Days	31 Days
0 - 500 PSI	6H500PSI	24H500PSI	7D500PSI	31D500PSI
0 - 150 PSI	6H150PSI	24H150PSI	7D150PSI	31D150PSI
0 - 50 PSI	6H50PSI	24H50PSI	7D50PSI	31D50PSI

CR87PB Series Recording Charts

Pressure				
Range	6 Hrs.	24 Hrs.	7 Days	31 Days
0 - 35 BAR	6H35BAR	24H35BAR	7D35BAR	31D35BAR
0 - 10 BAR	6H10BAR	24H10BAR	7D10BAR	31D10BAR
0 - 3.5 BAR	6H3.5BAR	24H3.5BAR	7D3.5BAR	31D3.5BAR

CR87V Series Recording Charts

6 Hrs.	24 Hrs.
CR87-57	CR87-58
7 Days	31 Days
CR87-59	CR87-60

CR87E Series Recording Charts

6 Hrs.	24 Hrs.
EVENT-6H	EVENT-24H
7 Days	31 Days
EVENT-7D	EVENT-31D

Custom Series Recording Charts

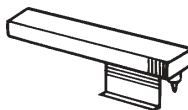
SD & SR Models		
Temp Range	7 Days	24 Hours
-20°F to 120°F	S20120F7	S20120F24
0°F to 100°F	S0100F7	S0100F24
+45°F to 90°F	S4590F7	S4590F24
-30°C to 50°C	S3050C7	S3050C24
0°C to 45°C	S045C7	S045C24

*Use 12 hour chart for 1.5, 3 and 6 hour speeds.

Standard 6" diameter recording charts are available for Fahrenheit and Celsius Recorders, and are packaged in quantities of 60 per box.

Replacement Pens

Part No.	Description
CRPEN	Black pen
CRPENR	Red pen
CRPENB	Blue pen



NEMA, Waterproof Case

Part No.	Description
NEMA	Water tight, corrosion Type 4X resistant. (CSA type 4)

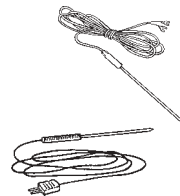


Recorder Accessories

(See Accessory Table for recorder compatibility)

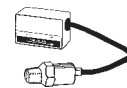
Type J Thermocouple Wire with Sensor for CR86/CR87

Part No.	Description
CR15	15' wire with 4" stainless steel sensor
CR25B	25' wire with 4" stainless steel sensor
CR50B	50' wire with 4" stainless steel sensor
CR75B	75' wire with 4" stainless steel sensor
CR100B	100' wire with 4" stainless steel sensor
CR15B	15' wire with 4" stainless steel sensor



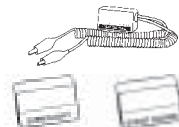
Pressure Sensor For CR87P, CR87PB

Part No.	Description
CR87PA	Replacement pressure sensor and adapter



Event Sensors For CR87E

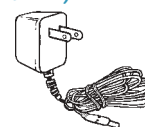
Part No.	Description
KEV	Replacement voltage sensor with adapter
KEL	Replacement light sensor with adapter
KES	Replacement sound sensor with adapter



Power Adapters

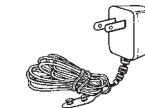
(for CR87B, CR87E, CR87P, CR87HT, CR86, CRTH2 & CRTT2)

Part No.	Input	Output
CRT (USA)	120 VAC	12 VDC
CRT220 (Europe)	220 VAC	12 VDC
CRT220UK (England)	220 VAC	12 VDC



(for Custom Series)

Part No.	Input	Output
DPGT (USA)	120 VAC	9 VDC
DPGT220US (USA)	220 VAC	9 VDC
DPGT220UK (England)	220 VAC	9 VDC
DPGT220EU (Europe)	220 VAC	9 VDC



Extension Cable for CR87B Temperature Sensor

Part No.	Description
CABLE10T	10' cable 100 ft. max



Temperature Sensor for CR87B (31 Day Version)

Part No.	Description
TP15	15' wire with 4" stainless steel sensor



Extension Cable for Adapter (KEV, KEL, KES)

Part No.	Description
CABLE6	6' cable
CABLE15	15' cable
CABLE25	25' cable



Nonsubmersible Type Air Sensor for CRTH2 & CRTT2

Part No.	Description
THP5(CRTH2)	15' with plug-in jack
THP5(CRTT2)	15' with plug-in jack



High Temperature Sensor for CR87HT

Part No.	Description
HTP5	6' high temperature thermocouple wire
HTP515	15' high temperature thermocouple wire
HTP525	25' high temperature thermocouple wire
HTP550	50' high temperature thermocouple wire
HTP5100	100' high temperature thermocouple wire



Type J Thermocouple Wire for Sensors

Part No.	Description
TCW25	25' wire only
TCW50	50' wire only
TCW75	75' wire only
TCW100	100' wire only



General Specifications	CR87B	CR87HT	CR87P
Ambient operating temperature range	32°F to 140°F (0°C to 60°C)	32°F to 140°F (0°C to 60°C)	32°F to 140°F (0°C to 60°C)
Ambient operating relative humidity	96% maximum	96% maximum	96% maximum
Chart speed selectable	6 hours, 24 hours, 7 days, 31 days	6 hours, 24 hours, 7 days, 31 days	6 hours, 24 hours, 7 days, 31 days
Chart rotation mode	Single turn or continuous	Single turn or continuous	Single turn or continuous
Chart speed accuracy	±1%	±1%	±1%
Chart diameter	6 inches	6 inches	6 inches
Display	3 digit LED 0.5"	3 digit LED 0.5"	3 digit LED 0.5"
Display Range			
Primary power supply	120 VAC, 50/60Hz. (220-240 VAC, 50/60Hz. optional CR87B-220) 12 Volt vehicle operation with optional adapter	120 VAC, 50/60Hz. (220-240 VAC, 50/60Hz. optional - CR87HT22C) 12 Volt vehicle operation with optional adapter	120 VAC, 50/60Hz. (220-240 VAC, 50/60Hz. optional - CR87PB) 12 Volt vehicle operation with optional adapter
Battery backup	(8) AA Alkaline batteries (not supplied)	(8) AA Alkaline batteries (not supplied)	(8) AA Alkaline batteries (not supplied)
Battery life	48 hours continuous use	48 hours continuous use	48 hours continuous use
Recording pen	Ink type	Ink type	Ink type
Case size	9 1/4" x 7 1/4" x 2 3/4"	9 1/4" x 7 1/4" x 2 3/4"	9 1/4" x 7 1/4" x 2 3/4"
Weight	4 lbs., 7 oz.	4 lbs., 7 oz.	4 lbs., 7 oz.

Recorder Specifications

			Pressure range 0 to 500 PSI, 0 to 150 PSI, PSI Model 0 to 50 PSI Pressure range 0 to 35 BAR, 0 to 10 BAR, BAR Model 0 to 3.5 BAR
Temp. scale selectable (Fahrenheit)	-40°F to 30°F, -20°F to 50°F, 50°F to 120°F	0°F to +250°F, 0°F to 500°F, 500°F to 1000°F	
Temp. scale selectable (Celsius)	-40°C to 0°C, -30°C to 10°C, 10°C to 50°C	0°C to 120°C, 0°C to 250°C, 250°C to 500°C	
Temperature accuracy	±1°C or ±2°F	±1°C or ±2°F	Pressure accuracy ±1% F.S.
Temperature sensor	15' long sensor wire with 4" Stainless Steel submersible temperature probe	6' long high temperature type "J" thermocouple wire probe. Can not be used in liquid or semi-solid.	±1% F.S. ng Remote pressure sensor Pressure port 1/4 NPT

Recorder Accessories	CR87B	CR87J	CR87HT	CR87P	CR87V	CR87E	Custom Recorder
CR15B	15' wire with 4" stainless steel sensor	*					
CR25B	25' wire with 4" stainless steel sensor	*					
CR50B	50' wire with 4" stainless steel sensor	*					
CR75B	75' wire with 4" stainless steel sensor	*					
CR100B	100' wire with 4" stainless steel sensor	*					
CR87PA	Replacement pressure sensor and adapter			*			
KEV	Replacement voltage sensor and adapter					*	
KEL	Replacement light sensor with adapter					*	
KES	Replacement sound sensor with adapter					*	
CRT	Power Adapter	*	*	*	*	*	
CRT220	Power Adapter	*	*	*	*	*	
CRT220UK	Power Adapter	*	*	*	*	*	
DPGT	Power Adapter						*
DPGT220US	Power Adapter						*
DPGT220UK	Power Adapter						*
DPGT220EU	Power Adapter						*
CABLE10T	10' cable	*					
TP15	15' wire with 4" stainless steel sensor	*					
HTP5	6' high temperature thermocouple wire		*				
HTP515	15' high temperature thermocouple wire		*				
HTP525	25' high temperature thermocouple wire		*				
HTP550	50' high temperature thermocouple wire		*				
HTP5100	100' high temperature thermocouple wire		*				
TCW25	Type J Thermocouple Wire - 25' wire only		*				
TCW50	Type J Thermocouple Wire - 50' wire only		*				
TCW75	Type J Thermocouple Wire - 75' wire only		*				
TCW100	Type J Thermocouple Wire - 100' wire only		*				
CRPEN	Black Pen	*	*	*	*	*	*
CRPENR	Red Pen	*	*	*	*	*	*
CRPENB	Blue Pen	*	*	*	*	*	*
NEMA	Recorder in NEMA Enclosure	NR87B	NR87HT	NR87P	NR87V	NR87E	

CR87V	CR87E	Custom Series
32°F to 120°F (0°C to 49°C)	32°F to 140°F (0°C to 60°C)	
96% Maximum	96% Maximum	
6 hours, 24 hours, 7 Days, 31 Days	6 hours, 24 hours, 7 days, 31 days	
Single turn or continuous	Single turn or continuous	
±1%	±1%	±1.5%
6 Inches	6 inches	6" in diameter (pkg. of 60 included)
	3 digit 0.5" LED to display event	
	0 - 999 minutes or event counts	
120 VAC, 50/60 Hz., (220/240 VAC, 50/60 Hz. optional - CR87V-220)	120 VAC, 50/60Hz. 220-240 VAC, 50/60Hz. optional - CR87E220)	9 Volt battery (not supplied) or AC adapter (included)
(8) AA Alkaline Batteries (not supplied)	(8) AA Alkaline batteries (not supplied)	
48 hours continuous use	48 hours continuous use	One year
Ink Type	Ink type	
9 1/4" x 7 1/4" x 2 3/4"	9 1/4" x 7 1/4" x 2 3/4"	9 1/4" x 7" x 2 3/4"
4 lbs., 7 oz.	4 lbs., 7 oz.	5 lbs.

Voltage Ranges (Selectable)	0-100mv 0-5V	KEV Range	24 VAC to 270 VAC (50/60Hz.) 24 VDC to 180 VDC
Current Range	0-20ma 4-20ma	KEL Range	Illumination threshold range 18 Lux to 1900 Lux ±20%
LED Display	0-5.00 Volts 0-100 mV 0-20.0 ma	KES Range	Sound threshold range 40 dB to 114 dB @ 1Khz ±20%
Accuracy	0-5.00 Volts ±0.01 Volt 0-100mV ±1mV 0-20ma ±0.1ma 4-20ma ±0.1ma		
			±2°F
Event Probes	KEV — AC/DC Voltage detecting with two wire clip leads KEL — A sensitive photocell KES — A sensitive audio transducer		Sensor Bi-metal



DR5

Disposable Temperature Recorder

The DR5 (5 day) disposable temperature recorder is an inexpensive, one time use temperature recorder—indispensable for HVAC/R uses. It gives an accurate 5 day strip chart recording of a wide ambient temperature range. It can be easily changed on the job! After use, recycle it! Drop it in any mailbox using the postage paid return label.

Applications

Monitoring temperature-sensitive goods in-transit, walk-in boxes, warehouses, HACCP and more.

Features

- Flexible mounting hanger to secure recorder to any irregular surface
- Pull TAB to start
- Detachable duplicate job information form
- Unique serial number on chart and recorder for positive identification

Specifications

Temperature Range	-20°F to 100°F (-25°C to 35°C)
Temperature Accuracy	±2°F (±1°C)
Temperature Sensor	Bi-Metal Coil
Replaceable Chart	Pressure Sensitive Strip Chart
Record Duration	5 Days Continuous
Drive	Solid State Quartz Motor
Clock Accuracy	Average ±20 Sec/Month
Battery	Alkaline AAA Battery
Shelf Life	3 Years
Unit Weight	13 oz. (375 gm)



The CR4 six (6) inch Universal Chart Recorder offers the ultimate in flexibility. Choose one of 5 sensors for your application, connect it to the CR4 Universal Recorder, make desired speed selection and start recording.

When your application calls for a different sensor, just change probes for the same recorder.

If you prefer to log data and download to a computer for analysis, the SL4 Service Logger has the same great flexibility of the CR4. The same probes can be used with the SL4.

Universal Recorder



CR4 & KTH (CRTH2)
Universal Recorder with Temperature Humidity Probe

Features/Benefits

- Automatic Probe recognition
- Front panel touch pad
- Real Time data view
- Battery backup (CR4)
- Field replaceable probes
- Field calibration of probes
- Independent Channel Alarms (CR4)
- PC software included (SL4)
(Windows 95 & 98 compatible only)

5 Interchangeable Probes

- KTH Temperature and Humidity Probe
- KTT Dual Temperature Probes
- KTP Temperature and Pressure Probes
- KPP Dual Pressure Probes
- KTE Temperature/Event Probes

Service Logger



CR4 & SL4 Specifications

	CR4	SL4
Chart Diameter	6 inches	Recording Time
Chart Rotation Mode	Continuous or Single turn	Memory
Chart Rotation Speed	1.5, 3, 6, 12 & 24 hrs, 7 & 31 days	Printer Interface
Chart Speed Accuracy	±1%	Parallel (centronics compatible)
Charts	60 assorted included	
Display	Backlit LCD (2 line)	Backlit LCD (2 line)
Temperature alarm Range	-20°F to 120°F (-30°C to 50°C)	
Relative Humidity alarm Range	0 to 100%	
Pressure Alarm Range	0 to 500 PSI (0 to 35 Bar)	
Alarm Delay	NO DELAY, 10 mins., 30 mins., 1 hr. or 2 hrs.	
Remote Alarm Connection	NO, 48 VAC/ DC, 0.1 A resistive load	
Operating Temperature	32°F to 120°F (0°C to 49°C)	32°F to 150°F (0°C to 65°C)
Primary Power	115 VAC, 50/60 Hz (230 VAC, 50/60 Hz optional)	115 VAC, 50/60 Hz (230 VAC, 50/60 Hz optional)
Alternate Power	12 V vehicle operation (need optional adapter)	12 V vehicle operation (need optional adapter)
Battery backup	8 AA alkaline batteries	9 V battery
Battery Life	48 hrs. continuous	24 hrs.

Interchangeable* Probes for CR4 and SL4

Probe Type	Part No.	Temp.Range/ Accuracy	Voltage Range	RH Range/ Accuracy	Press Range/ Accuracy	Dew Point Range
Temp/RH	KTH	-40°F to 130°F ±2°F (-40° to 55°C ±1°C)	—	0-100% at 32° to 130°F ±2% (0° to 55°C) ambient	—	32° to 130°F (0° to 55°C)
Temp/Temp	KTT	-40°F to 130°F ±2°F (-40° to 55°C ±1°C)	—	—	—	—
Temp/Press	KTP	-40°F to 130°F ±2°F (-40° to 55°C ±1°C)	—	—	0-500PSI (0-35 BAR) ±1%FS	—
Press/Press	KPP	—	—	—	0-500PSI (0-35 BAR) ±1%FS	—
Temp/Event	KTE	-40°F to 130°F ±2°F (-40° to 55°C ±1°C)	24 VAC-270VAC (24 VDC-180VDC)	—	—	—

*All probes can be used with the Service Logger and the Universal Recorder.

KTH Temperature / Humidity Probe

Complete with combination temperature, humidity probe. Allows for precision measurement of temperature, humidity and dew point.



KTT Dual Temperature Probes

Complete with two precision temperature probes. Allows for two independent temperature measurements. Includes adapter and connecting cable. Perfect for refrigerators, freezers, indoor-outdoor recording, etc.



KTP Temperature / Pressure Probes

Complete with independent precision pressure and temperature probes. Measures and records temperature and pressure simultaneously. Ideal for solving intermittent compressor problems. Includes a connecting cable and adapter.



KPP Dual Pressure Probes

Complete with two pressure probes. Measure and record two pressures simultaneously. Includes connecting cable and adapter.



KTE Temperature / Event Probes

Complete with precision temperature probe, event probe, a connecting cable and adapter. Allows the service engineer to analyze various equipment running cycles.



CR4 & SL4 Accessories

Part No.	Description	CR4	SL4	KTH	KTT	KTP	KPP	KTE
KTH	Temperature/ Humidity Probe	*	*					
KTT	Dual Temperature Probes	*	*					
KTP	Temperature and Pressure Probes	*	*					
KPP	Dual Pressure Probes	*	*					
KTE	Temperature/ Event Probes	*	*					
CABLE10H	Extension cable for KTH			*				
CABLE6	6 ft. cable for sensor probes			*	*	*	*	*
CABLE15	15 ft. cable for sensor probes			*	*	*	*	*
CABLE25	25 ft. cable for sensor probes			*	*	*	*	*
TP6	Temperature sensor with 6 ft. wire			*	*	*		
TP15	Temperature sensor with 15 ft. wire			*	*	*		
CRPEN	Black Recorder Pen	*						
CRPENR	Red Recorder Pen	*						
CRPENB	Blue Recorder Pen	*						
CR4CABLE	RS232 Data Cable	*						
PC6	6 ft. Printer cable		*					
CC6	6 ft. Computer Transfer cable		*					
CRT 115	VAC Power Adapter	*	*					
CRT220	220 VAC Power Adapter	*	*					
SLCASE	Carrying Case		*					



Universal Recorder Charts

KTH RANGE 1	KTH RANGE 2	12 HR	24 HR	7 DAY	31 DAY
-20°F to 120°F	0-100% HUMIDITY	E20120F12	E20120F24	E20120F7	E20120F31
-20°F to 50°F	0-100% HUMIDITY	E2050F12	E2050F24	E2050F7	E2050F31
40°F to 110°F	0-100% HUMIDITY	E40110F12	E40110F24	E40110F7	E40110F31
-30°C to 50°C	0-100% HUMIDITY	E3050C12	E3050C24	E3050C7	E3050C31
-30°C to 10°C	0-100% HUMIDITY	E3010C12	E3010C24	E3010C7	E3010C31
5°C to 45°C	0-100% HUMIDITY	E545C12	E545C24	E545C7	E545C31
KTT RANGE 1	KTT RANGE 2	12 HR	24 HR	7 DAY	31 DAY
-20°F to 120°F	-20°F to 50°F	CRTT2-2	CRTT2-1	CRTT2-3	CRTT2-21
-20°F to 50°F	40°F to 110°F	CRTT2-5	CRTT2-4	CRTT2-6	CRTT2-19
40°F to 110°F	-20°F to 120°F	CRTT2-8	CRTT2-7	CRTT2-9	CRTT2-20
-30°C to 50°C	5°C to 45°C	CRTT2-11	CRTT2-10	CRTT2-12	CRTT2-22
5°C to 45°C	-30°C to 10°C	CRTT2-14	CRTT2-13	CRTT2-15	CRTT2-24
-30°C to 10°C	-30°C to 50°C	CRTT2-17	CRTT2-16	CRTT2-18	CRTT2-23
KTE RANGE 1	KTE RANGE 2	12 HR	24 HR	7 DAY	31 DAY
-20°F to 120°F	ON/OFF	V20120F12	V20120F24	V20120F7D	V20120F31
-20°F to 50°F	ON/OFF	V2050F12	V2050F24	V2050F7	V2050F31
40°F to 110°F	ON/OFF	V40110F12	V40110F24	V40110F7	V40110F31
-30°C to 50°C	ON/OFF	V3050C12	V3050C24	V3050C7	V3050C31
5°C to 45°C	ON/OFF	V545C12	V545C24	V545C7	V545C34
-30°C to 10°C	ON/OFF	V3010C12	V3010C24	V3010C7	V3010C31
KPP RANGE 1	KPP RANGE 2	12 HR	24 HR	7 DAY	31 DAY
0-50 PSI	0-150 PSI	CRPP2-1	CRPP2-7	CRPP2-13	CRPP2-19
0-50 PSI	0-150 PSI	CRPP2-2	CRPP2-8	CRPP2-14	CRPP2-20
0-150 PSI	0-500 PSI	CRPP2-3	CRPP2-9	CRPP2-15	CRPP2-21
0-3.5 BAR	0-10 BAR	CRPP2-4	CRPP2-10	CRPP2-16	CRPP2-22
0-3.5 BAR	0-35 BAR	CRPP2-5	CRPP2-11	CRPP2-17	CRPP2-23
0-10 BAR	0-35 BAR	CRPP2-6	CRPP2-12	CRPP2-18	CRPP2-24
KTP RANGE 1	KTP RANGE 2	12 HR	24 HR	7 DAY	31 DAY
-20°F to 120°F	0-50 PSI	CRTP2-1	CRTP2-10	CRTP2-37	CRTP2-55
-20°F to 120°F	0-150 PSI	CRTP2-2	CRTP2-11	CRTP2-38	CRTP2-56
-20°F to 120°F	0-500 PSI	CRTP2-3	CRTP2-12	CRTP2-39	CRTP2-57
-20°F to 50°F	0-50 PSI	CRTP2-4	CRTP2-13	CRTP2-40	CRTP2-58
-20°F to 50°F	0-150 PSI	CRTP2-5	CRTP2-14	CRTP2-41	CRTP2-59
-20°F to 50°F	0-500 PSI	CRTP2-6	CRTP2-15	CRTP2-42	CRTP2-60
40°F to 110°F	0-50 PSI	CRTP2-7	CRTP2-16	CRTP2-43	CRTP2-61
40°F to 110°F	0-150 PSI	CRTP2-8	CRTP2-17	CRTP2-44	CRTP2-62
40°F to 110°F	0-500 PSI	CRTP2-9	CRTP2-18	CRTP2-45	CRTP2-63
-30°C to 50°C	0-3.5 BAR	CRTP2-19	CRTP2-28	CRTP2-46	CRTP2-64
-30°C to 50°C	0-10 BAR	CRTP2-20	CRTP2-29	CRTP2-47	CRTP2-65
-30°C to 50°C	0-35 BAR	CRTP2-21	CRTP2-30	CRTP2-48	CRTP2-66
-30°C to 10°C	0-3.5 BAR	CRTP2-22	CRTP2-31	CRTP2-49	CRTP2-67
-30°C to 10°C	0-10 BAR	CRTP2-23	CRTP2-32	CRTP2-50	CRTP2-68
-30°C to 10°C	0-35 BAR	CRTP2-24	CRTP2-33	CRTP2-51	CRTP2-69
5°C to 45°C	0-3.5 BAR	CRTP2-25	CRTP2-34	CRTP2-52	CRTP2-70
5°C to 45°C	0-10 BAR	CRTP2-26	CRTP2-35	CRTP2-53	CRTP2-71
5°C to 45°C	0-35 BAR	CRTP2-27	CRTP2-36	CRTP2-54	CRTP2-72



CTP1
Capillary Tube Cutter
 5" stripper and cutter. Fast, efficient and all purpose.



TC1
Mini-size Tube Cutter
 Easily cuts tubes from 1/8" thru 5/8" O.D. capacity. Requires only 1 5/16" clearance space. (Replacement cutting wheels available: Part No. TC1W)



TC2
Heavy Duty Tube Cutter

- For clean cuts in hard or soft copper aluminum, brass, thin wall steel and stainless steel.
- Rollers have flared cut off groove
- Complete with foldaway reamer blade and spare cutting wheel.
- Cuts tubes from 1/8" thru 1 1/8" O.D.
- Replacement cutting wheel p/n TC2W



UFC1
Fin Comb
 Cleans and straightens fins for better operating efficiency.



FPT10, FPT13 & FPT15
Fin Jack
 Straightens and separates bent fins quickly and easily. One tool can be used for up to 3 sizes of fins.

Part No.	Description
FPT10	9 & 10 Fins per inch
FPT13	11, 12 & 13 Fins per inch
FPT15	14, 15 & 16 Fins per inch



FCR6
Handy Ring Fin Comb Set
 Six of the most popular Fin Combs covering twelve different size fins on a convenient ring. Includes FC0810, FC0915, FC1113, FC1214, FC1617, and FC1820.



Fin Combs
 Straighten and clean evaporator and condenser fins.

Part No.	Fin Per Inch	Color
FC0810	8 and 10	Orange
FC0915	9 and 15	Yellow
FC1113	11 and 13	Blue
FC1214	12 and 14	Green
FC1617	16 and 17	Lime
FC1820	18 and 20	Red
FC2224	22 and 24	Purple



SF4311
"FasTap" Tube Piercing Pliers

- Fast refrigerant recovery: Just clamp and recover
- Tubing sizes 1/4" to 7/8" OD
- Replaceable self-sharpening tip
- Simple to use
- Light weight

SF4314
Tube Piercing Pliers Replacement Tip
 (Not pictured)



SF3970
Internal Temperature Reading Tool
Take Internal Temperatures of Refrigerant Lines digitally.

- Accurately adjust superheat
- Simple instructions
- Inserts through access fitting (supplied)

Includes: Core Removal Tool and Digital Thermometer
Replaces SF3940 AND SF3960



WIN100
HVAC Pocket Calculator

- Converts pressure to temperature, and temperature to pressure
- Clocks BTU per hour input of natural gas through a gas meter
- Determines percentage of relative humidity
- Fahrenheit to Celsius, and Celsius to Fahrenheit conversion
- English to Metric conversion
- For use with refrigerants R11, R12, R22, R500, R502, R717 only



DHS55
Digital Handheld Scale
 This compact handheld scale provides quick measurements for your refrigeration applications.

Features/Benefits

- 55 lbs max scale
- 2% accuracy
- One button operation
- Auto shut off
- Lbs/Kgs switchable
- Max weight memory
- 9 V battery included





ELD
Illuminated Inspection
Mirror/Flashlight

- For previously inaccessible areas
- Push button and continuous "ON" twist switch.



Telescoping Tools

Match Clip, Magnet, and Inspection Mirrors

Features/Benefits

- Double ball joint head adjustment
- Extendable/retractable design
- Magnified glass mirror available with IM4
- Carry pouch included

Part No.	Description	Extended Length
CT1	Heavy Duty Match Clip, Pocket Clip	26"
IM1	1.25" Round Glass Mirror, Pocket Clip	27"
IM2	1" X 2" Oval Glass Mirror, Pocket Clip	28"
IM3	2.25" Round Glass Mirror, Vinyl Grip Handle	14.5"
IM4	2.25" Round Magnifying Glass Mirror, Vinyl Grip Handle	14.5"
IM5	2.25" X 3.25" Rectangular Glass Mirror, Vinyl Grip Handle	15.5"
IMK3	Combination Tool, Pocket Clip Includes: Match Clip, Magnet, 2" Round Mirror & PVC Pouch	27"



WG1
Water Guard

- Instant, loud, audible alarm
- Used near sinks, sump pumps and water heaters
- 9V battery (not included)
- 90db



417
Drain Blaster

Hooks up to air tank or refrigeration hose to use as a high pressure blow-out for drains.



FWB1
Fin Wisk Brush

FEATURES

- Long lasting, sturdy Bristle Design



RCB1
Refrigeration
Coil Brush

FEATURES

- 27 1/2" long
- 12" brush length
- 1 1/2" and 3/4" bristle length



Air Conditioning & Refrigeration Wrenches

Part No.	Description
RW516	1/4" - 3/16" Sq. X 3/8" - 5/16" Hex
RW916	1/4" - 3/16" Sq. X 1/2" - 9/16" Hex
RWA10	Hex adapter for refrigeration wrenches



S7-L300 *New!*
Tension Tool

Tension tool for 120-175 lb. Duct Ties



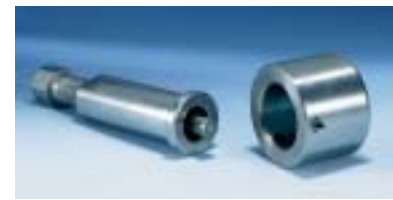
MT100
Magnetic Parts
Tray



FBP100
Fan Blade Puller

FEATURES

- Sturdy, heavy duty steel
- 5/8" steel center shaft
- 4 pull fingers
- Alignment tool included
- Has flats for wrench
- Fine thread version provides additional torque & pulling power



Blower Wheel Pullers

A fast and easy method to remove blower wheel from shaft without damage to the blower, blower motor or shaft.

PART NO.	DESCRIPTION
SF3500	Drive bolt shank amd s/b and 1 1/4" hub
SF3510	Drive bolt shank amd s/b and 1 3/8" hub
SF3515	1-3/8" hub only
SF3525	1-1/2" hub only
SF3535	1-5/8" hub only



New!



TC103 Test Cord

- 6 foot, heavy duty, 16 gauge wire
- Male plug to medium duty spring clips
- 2 wire, black/ red



TC104

- 24", heavy duty, 16 gauge wire
- Female plug to medium size spring clips
- 3 wire, black/red/ green



TA3001

- 15' long, 1" nylon webbing
- Adjusts from 1' to 15'
- Ratchet handle w/ quick release
- Vinyl coated "S" hooks at each end
- 3000 lb. capacity



THS1441

- 12' long, 1" nylon webbing
- Adjusts from 1' to 12'
- Steel cam lever buckle for quick release
- Vinyl coated "S" hooks at each end
- 3000 lb. strap capacity/ 1500 lb. buckle capacity



THS60

- 5' long, 3/4" polypropylene web strap
- Reinforced grommet
- Spring loaded buckle at one end

Tools & Accessories



P89 Voltage Detector

- 12-440VAC
- Non-contact Voltage Detection



P85 "Tester Plus"

- 12-440VAC
- Check Continuity, Voltage and Polarity



HVT2 Safe-T-Tester Screwdriver

- 110-220VAC
- Light in handle indicates power



S6N1 6 in 1 Screwdriver

- Bit Sizes
 - Slotted: 3/16" (5mm) and 1/4" (6mm)
 - Phillips: #1 and #2
 - Nut Driver: 1/4" and 5/16"



SR6N1 6 in 1 Ratchet Screwdriver

Sold in 12 pack display!

- Ratchet Action
- 3-Settings:
 - Forward
 - Manual
 - Reverse
- Bit Sizes
 - Slotted: 3/16" (5mm) and 1/4" (6mm)
 - Phillips: #1 and #2
 - Nut Driver: 1/4" and 5/16"



JS1 Jeweler's Screwdriver Set

Set of six assorted small-sized, swivel type screwdrivers.



HK7 Hex Key Wrench Set

Consists of seven 12" long hex wrenches:
5/64", 3/32", 1/8", 5/32", 3/16", 7/32" and 1/4".



TB123A Wrench

Wrench with adapter, Replaces 123931, 38312, and WX5X1325



UW1 Universal Wrench

Ranges in sizes from 1/4", 5/16", 11/32", and 3/8".



BJ10 Belt-Jack Instant Belt Tightener

Designed to set belt tension and to help align pulleys on all belt driven units including blower motors, compressors, transmissions, and automotive components.

- Opens from 4 1/2" to 15" with extender
- Heavy duty 3/8-16 thread

BJ10PLUS Belt-Jack Instant Belt Tightener

Same as BJ10 Plus an extra 6" extension



New!

SUPCO Terminals, Cable Clamps, Grommets, Heat Shrink Tubing, Cable and Duct Ties are available in three convenient packages:

- The service pack handy and low priced, ideal for small jobs.
- The BX (Box) which includes 50 or 100 pieces.
- The C Pack (Bag) which include 100 pieces.

Cable Clamps, Grommets, Heat Shrink Tubing, Cable & Duct Ties

Terminals & Connectors

SUPCO PART NO.	DESCRIPTION	Pkg QTY
SWC02	NYLON CABLE CLAMP 1/8" (.125)	40
SWC03	NYLON CABLE CLAMP 3/16" (.187)	40
SWC04	NYLON CABLE CLAMP 1/4" (.250)	35
SWC05	NYLON CABLE CLAMP 5/16" (.3125)	35
SWC06	NYLON CABLE CLAMP 3/8" (.375)	30
SWC08	NYLON CABLE CLAMP 1/2" (.500)	25
SWC110	NYLON CABLE CLAMP 5/8"	20
SWC112	NYLON CABLE CLAMP 3/4"	15
SWC116	NYLON CABLE CLAMP 1"	14
SWCA1	CABLE CLAMPS, ASSORTED, 1/8" TO 1"	26
SGV04	GROMMETS 1/4" (.250)	18
SGV05	GROMMETS 5/16" (.3125)	15
SGV06	GROMMETS 3/8" (.375)	13
SGV07	GROMMETS 7/16" (.437)	12
SGV08	GROMMETS 1/2" (.500)	12
SGV10	GROMMETS 5/8" (.625)	7
SGV14	GROMMETS 7/8"	4
SGV16	GROMMETS 1"	4
SGVA1	ASSORTED GROMMETS - SMALL	15
SGVA2	ASSORTED GROMMETS - LARGE	5
SHS03	HEAT SHRINK TUBING 3/16" ID X 4"	8
SHS04	HEAT SHRINK TUBING 1/4" ID X 4"	7
SHS06	HEAT SHRINK TUBING 3/8" ID X 4"	6
SHS08	HEAT SHRINK TUBING 1/2" ID X 4"	5
SHS012	HEAT SHRINK TUBING 3/4" ID X 4"	4
SHS16	HEAT SHRINK TUBING 1" ID X 4"	3
SHSA1	ASSORTED 3/16, 1/4, 3/8" X 4"	7
SHSA2	ASSORTED 1/2, 3/4, 1" x 4"	4
SWT04	NYLON CABLE TIE 3-3/4" MAX BUNDLE SIZE 3/4"	40
SWT04C	NYLON CABLE TIE 3-3/4" MAX BUNDLE SIZE 3/4"	100
SWT05	NYLON CABLE TIE 5-1/2" MAX BUNDLE SIZE 1-1/4"	35
SWT05C	NYLON CABLE TIE 5-1/2" MAX BUNDLE SIZE 1-1/4"	100
SWT07	NYLON CABLE TIE 7" MAX BUNDLE SIZE 2-1/8"	30
SWT07C	NYLON CABLE TIE 7" MAX BUNDLE SIZE 2-1/8"	100
SWT11	NYLON CABLE TIE 11" MAX BUNDLE SIZE 3"	15
SWT11C	NYLON CABLE TIE 11" MAX BUNDLE SIZE 3"	100
SWT15	NYLON CABLE TIE 14" MAX BUNDLE SIZE 3-5/8"	12
SWT15C	NYLON CABLE TIE 14" MAX BUNDLE SIZE 3-5/8"	100
SWTA1	WIRE TIES, ASSORTED 4, 7 AND 11"	30
SWTM05	CABLE TIE W/ SCREW MOUNT, 5-1/2" MAX BUNDLE SIZE 1-1/4"	13
SWTM05C	CABLE TIE W/ SCREW MOUNT, 5-1/2" MAX BUNDLE SIZE 1-1/4"	100
SWTM07	CABLE TIE W/ SCREW MOUNT, 6-3/4" MAX BUNDLE SIZE 2-1/8"	11
SWTM07C	CABLE TIE W/ SCREW MOUNT, 6-3/4" MAX BUNDLE SIZE 2-1/8"	100
SWTM11	CABLE TIE W/ SCREW MOUNT: 11", MAX BUNDLE SIZE: 3"	6
SWTM11C	CABLE TIE W/ SCREW MOUNT: 11", MAX BUNDLE SIZE: 3"	100
SWTM14	CABLE TIE W/ SCREW MOUNT: 14", MAX BUNDLE SIZE: 4"	5
SWTM14C	CABLE TIE W/ SCREW MOUNT: 14", MAX BUNDLE SIZE: 4"	100



WT Series (white) & WTB Series (black)
Nylon Cable Ties



WTM Series (white) & WTMB Series (black)
Nylon Cable Ties w/ Mounting Hole



S7P Series
Heavy Duty Duct Ties



SHS Series
Heat Shrink Tubing, Polyolefin 50% Shrink



SWC Series
Nylon Cable Clamps



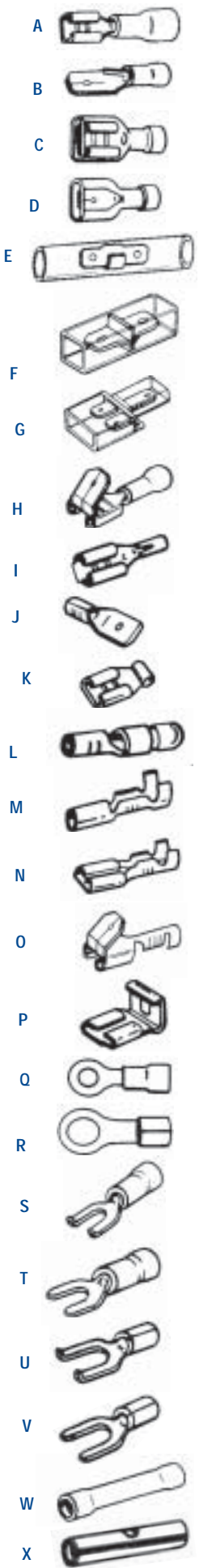
SGV Series
Grommets, Vinyl (by panel hole size)

SUPCO PART NO.	DESCRIPTION	Pkg QTY
SWTB05	BLACK NYLON TIES, 5"	35
SWTB05C	BLACK NYLON TIES, 5"	100
SWTB07	BLACK NYLON TIES, 7"	30
SWTMB07C	BLACK NYLON TIES, 7"	100
SWTB11	BLACK NYLON TIES, 11"	15
SWTB11C	BLACK NYLON TIES, 11"	100
SWTB15	BLACK NYLON TIES, 15"	12
SWTB15C	BLACK NYLON TIES, 15"	100
SWTBA1	WIRE TIES, ASSORTED 4, 7 AND 11"	28
SWTMB05	BLACK NYLON TIES, 5" W/ MOUNTING HOLE	12
SWTMB05C	BLACK NYLON TIES, 5" W/ MOUNTING HOLE	100
SWTMB07	BLACK NYLON TIES, 7" W/ MOUNTING HOLE	10
SWTMB07C	BLACK NYLON TIES, 7" W/ MOUNTING HOLE	100
SWTMB11	BLACK NYLON TIES, 11" W/ MOUNTING HOLE	6
SWTMB11C	BLACK NYLON TIES, 11" W/ MOUNTING HOLE	100
SWTMB14	BLACK NYLON TIES, 14" W/ MOUNTING HOLE	5
SWTMB14C	BLACK NYLON TIES, 14" W/ MOUNTING HOLE	100
S7P24	DUCT TIE 24", FITS 6" DUCT, 175 LB TENSILE	50
S7P36	DUCT TIE 36", FITS 10" DUCT, 175 LB TENSILE	50
S7P48	DUCT TIE 48", FITS 14" DUCT, 175 LB TENSILE	50
S7L300	TENSIONING TOOL FOR 120-175 LB. TIES	1



New!

SUPCO P/N	Size / Description	Type	Pkg Qty
Quick Disconnects - Insulated			
T1001	12-10 .250 (1/4) female tab	A	15
T1001C	12-10 .250 (1/4) female tab	A	100
T1002	16-14 .250 (1/4) female tab	A	20
T1002C	16-14 .250 (1/4) female tab	A	100
T1003	16-14 .250 (1/4) male tab	B	20
T1003C	16-14 .250 (1/4) male tab	B	100
T1004	12-10 .250 (1/4) male tab	B	15
T1004C	12-10 .250 (1/4) male tab	B	100
T1005	16-14 .250 (1/4) female fully insulated	C	10
T1105C	16-14 .250 (1/4) female fully insulated	C	100
T1006	16-14 .250 (1/4) male fully insulated	D	10
T1106C	16-14 .250 (1/4) male fully insulated	D	100
T1007	18-22 .250 (1/4) female fully insulated	C	10
T1007C	18-22 .250 (1/4) female fully insulated	C	100
T1008	18-22 .250 (1/4) male fully insulated	D	10
T1008C	18-22 .250 (1/4) male fully insulated	D	100
T1009	12-10 .250 (1/4) female fully insulated	C	10
T1009C	12-10 .250 (1/4) female fully insulated	C	100
T1010	12-10 .250 (1/4) male fully insulated	D	10
T1010C	12-10 .250 (1/4) male fully insulated	D	100
T1021	.250 (1/4) double male tab	E	10
T1021C	.250 (1/4) double male tab	E	100
T1022	.250 (1/4) double male tab	F	10
T1022C	.250 (1/4) double male tab	F	100
T1023	.250 (1/4) triple male tab	G	10
T1023C	.250 (1/4) triple male tab	G	100
T1027	16-14 .250 (1/4) male/female p.b.	H	10
T1027C	16-14 .250 (1/4) male/female p.b.	H	100
T1028	22-18 .250 (1/4) male/female p.b.	H	10
T1028C	22-18 .250 (1/4) male/female p.b.	H	100
T1029	12-10 .250 (1/4) male/female p.b.	H	10
T1029C	12-10 .250 (1/4) male/female p.b.	H	100
T2002	16-14 .187 (3/16) female tab	A	20
T2002C	16-14 .187 (3/16) female tab	A	100
T2003	16-14 .187 (3/16) male tab	B	20
T2003C	16-14 .187 (3/16) male tab	B	100
T2004	22-18 .250 (1/4) female tab	A	20
T2004C	22-18 .250 (1/4) female tab	A	100
Quick Disconnects - Non Insulated			
T1102	16-14 .250 (1/4) female tab	I	20
T1102C	16-14 .250 (1/4) female tab	I	100
T1103	16-14 .250 (1/4) male tab	J	20
T1103C	16-14 .250 (1/4) male tab	J	100
T1104	16-14 .250 (1/4) flag	K	20
T1104C	16-14 .250 (1/4) flag	K	100
T1105	16-14 .187 (3/16) female tab	I	20
T1105C	16-14 .187 (3/16) female tab	I	100
T1106	16-14 .187 (3/16) flag	K	20
T1106C	16-14 .187 (3/16) flag	K	100
T1107	22-18 .110 (7/64) female tab	I	20
T1107C	22-18 .110 (7/64) female tab	I	100
T1108	16-14 .157 (5/32) bullet male	L	20
T1108C	16-14 .157 (5/32) bullet male	L	100
T1109	16-14 .250 (1/4) female tab w/insulation crimp	N	20
T1109C	16-14 .250 (1/4) female tab w/insulation crimp	N	100
T1110	16-14 .157 (5/32) bullet female	M	20
T1110C	16-14 .157 (5/32) bullet female	M	100
T1120	16-14 .312 (5/16) female tab w/insulation crimp	N	10
T1120C	16-14 .312 (5/16) female tab w/insulation crimp	N	100
T1127	16-14 .250 (1/4) male/female p.b.	O	10
T1127C	16-14 .250 (1/4) male/female p.b.	O	100
T2001	22-18 .110 (1/4) female tab	I	20
T2001C	22-18 .110 (1/4) female tab	I	100
Quick Disconnects - High Temp to 900 F			
T1111	16-14 .250 (1/4) female tab	I	20
T1111C	16-14 .250 (1/4) female tab	I	100
T1112	12-10 .250 (1/4) female tab	I	15
T1112C	12-10 .250 (1/4) female tab	I	100
T1113	16-14 .250 (1/4) female x 90 degree flag	K	20



SUPCO P/N	Size / Description	Type	Pkg Qty
T1113C	16-14 .250 (1/4) female x 90 degree flag	K	100
T1114	12-10 .250 (1/4) female x 90 degree flag	P	20
T1114C	12-10 .250 (1/4) female x 90 degree flag	P	100
T2101	16-14 .250 (1/4) female with crimp	N	20
T2101C	16-14 .250 (1/4) female with crimp	N	100
Rings - Insulated			
T1030	22-18 #6 stud 9/64 I.D.	Q	10
T1030C	22-18 #6 stud 9/64 I.D.	Q	100
T1031	22-18 #8 stud 11/64 I.D.	Q	20
T1031C	22-18 #8 stud 11/64 I.D.	Q	100
T1032	22-18 #10 stud 13/64 I.D.	Q	20
T1032C	22-18 #10 stud 13/64 I.D.	Q	100
T1033	16-14 #8 stud 11/64 I.D.	Q	20
T1033C	16-14 #8 stud 11/64 I.D.	Q	100
T1034	16-14 #10 stud 13/64 I.D.	Q	20
T1034C	16-14 #10 stud 13/64 I.D.	Q	100
T1035	16-14 1/4 stud 17/64 I.D.	Q	15
T1035C	16-14 1/4 stud 17/64 I.D.	Q	100
T1036	12-10 #8 stud 11/64 I.D.	Q	15
T1036C	12-10 #8 stud 11/64 I.D.	Q	100
T1037	12-10 #10 stud 13/64 I.D.	Q	15
T1037C	12-10 #10 stud 13/64 I.D.	Q	100
T1038	12-10 1/4 stud 17/64 I.D.	Q	15
T1038C	12-10 1/4 stud 17/64 I.D.	Q	100
T1039	16-14 3/8 stud 25/64 I.D.	Q	15
T1039C	16-14 3/8 stud 25/64 I.D.	Q	100
T1040	12-10 3/8 stud 25/64 I.D.	Q	15
T1040C	12-10 3/8 stud 25/64 I.D.	Q	100
T2033	16-14 #6 stud 9/64 I.D.	Q	20
T2033C	16-14 #6 stud 9/64 I.D.	Q	100
T2065	#8 1/4 stud 17/64 I.D.	Q	15
T2065C	#8 1/4 stud 17/64 I.D.	Q	100
T2066	#6 1/4 stud 17/64 I.D.	Q	15
T2066C	#6 1/4 stud 17/64 I.D.	Q	100
Rings - Non Insulated			
T1131	22-18 #8 stud 11/64 I.D.	R	20
T1131C	22-18 #8 stud 11/64 I.D.	R	100
T1133	16-14 #8 stud 11/64 I.D.	R	20
T1133C	16-14 #8 stud 11/64 I.D.	R	100
T1134	16-14 #10 stud 11/64 I.D.	R	20
T1134C	16-14 #10 stud 11/64 I.D.	R	100
T1135	16-14 1/4 stud 17/64 I.D.	R	20
T1135C	16-14 1/4 stud 17/64 I.D.	R	100
T1136	12-10 #8 stud 11/64 I.D.	R	20
T1136C	12-10 #8 stud 11/64 I.D.	R	100
T1137	12-10 #10 stud 13/64 I.D.	R	20
T1137C	12-10 #10 stud 13/64 I.D.	R	100
T1138	12-10 1/4 stud 17/64 I.D.	R	15
T1138C	12-10 1/4 stud 17/64 I.D.	R	100
Rings - High Temp to 900 F			
T1115	16-14 #10 stud 13/64 I.D.	R	20
T1115C	16-14 #10 stud 13/64 I.D.	R	100
T1116	16-14 1/4 stud 17/64 I.D.	R	20
T1116C	16-14 1/4 stud 17/64 I.D.	R	100
T1117	12-10 #10 stud 13/64 I.D.	R	20
T1117C	12-10 #10 stud 13/64 I.D.	R	100
T1118	12-10 1/4 stud 17/64 I.D.	R	15
T1118C	12-10 1/4 stud 17/64 I.D.	R	100
Spade Flanged - Insulated			
T1042	22-18 #8 stud 11/64 I.D.	S	20
T1042C	22-18 #8 stud 11/64 I.D.	S	100
T1043	16-14 #8 stud 11/64 I.D.	S	20
T1043C	16-14 #8 stud 11/64 I.D.	S	100
T1044	16-14 #10 stud 13/64 I.D.	S	20
T1044C	16-14 #10 stud 13/64 I.D.	S	100
T1046	12-10 #10 stud 13/64 I.D.	S	15
T1046C	12-10 #10 stud 13/64 I.D.	S	100

Terminals & Connectors



SUPCO P/N	Size / Description	Type	Pkg Qty
Spade - Insulated			
T1047	22-18 #8 stud 11/64 I.D.	T	20
T1047C	22-18 #8 stud 11/64 I.D.	T	100
T1048	16-14 #10 stud 13/64 I.D.	T	20
T1048C	16-14 #10 stud 13/64 I.D.	T	100
T1049	12-10 #10 stud 13/64 I.D.	T	15
T1049C	12-10 #10 stud 13/64 I.D.	T	100
T1050	12-10 #8 stud 11/64 I.D.	T	15
T1050C	12-10 #8 stud 11/64 I.D.	T	100
Spade Flanged - Insulated			
T1141	22-18 #8 stud 11/64 I.D.	U	20
T1141C	22-18 #8 stud 11/64 I.D.	U	100
T1142	22-18 #10 stud 13/64 I.D.	U	20
T1142C	22-18 #10 stud 13/64 I.D.	U	100
T1143	16-14 #8 stud 11/64 I.D.	U	20
T1143C	16-14 #8 stud 11/64 I.D.	U	100
T1144	16-14 #10 stud 13/64 I.D.	U	20
T1144C	16-14 #10 stud 13/64 I.D.	U	100
Spade - Non Insulated			
T1145	22-18 #10 stud 13/64 I.D.	V	10
T1145C	22-18 #10 stud 13/64 I.D.	V	100
T1146	16-14 #10 stud 13/64 I.D.	V	10
T1146C	16-14 #10 stud 13/64 I.D.	V	100
T1147	10-12 #10 stud 13/64 I.D.	V	10
T1147C	10-12 #10 stud 13/64 I.D.	V	100
T1147-50 WIRE CNCTR, SM, GRAY			50
Butt Connectors			
T1051	22-18 insulated - red	W	20
T1051C	22-18 insulated - red	W	100
T1052	16-14 insulated - blue	W	20
T1052C	16-14 insulated - blue	W	100
T1053	12-10 insulated - yellow	W	15
T1053C	12-10 insulated - yellow	W	100
T1119	22-18 non insulated	X	20
T1119C	22-18 non insulated	X	100
T2067	# 8 non insulated	X	20
T2067C	#8 non insulated	X	100
T2068	#6 non insulated	X	20
T2068C	#6 non insulated	X	100
T2111	16-14 non insulated	X	20
T2111C	16-14 non insulated	X	100
T2112	12-10 non insulated	X	15
T2112C	12-10 non insulated	X	100
Closed End Connectors			
T1056	22-18 insulated crimp type	Y	20
T1056C	22-18 insulated crimp type	Y	100
T1057	16-14 insulated crimp type	Y	15
T1057C	16-14 insulated crimp type	Y	100
T1058	12-10 insulated crimp type	Y	15
T1058C	12-10 insulated crimp type	Y	100
T1059	#8 insulated crimp type	Y	15
T1059C	#8 insulated crimp type	Y	100
Line Tap Connector			
T1061	22-18 line tap connector	Z	10
T1061C	22-18 line tap connector	Z	100
T1062	16-14 line tap connector	Z	10
T1062C	16-14 line tap connector	Z	100
T1064	12-10 line tap connector	Z	5
T1064C	12-10 line tap connector	Z	100
Line Tap with Disconnect			
T1065	18-14 line taps only	AA	10
T1065C	18-14 line taps only	AA	100



SUPCO P/N	Size / Description	Type	Pkg Qty
Connectors and Adapters			
T1121	.250 (1/4) 2 male x 1 female	BB	10
T1121C	.250 (1/4) 2 male x 1 female	BB	100
T1122	.250 (1/4) 2 male x 1 female	CC	10
T1122C	.250 (1/4) 2 male x 1 female	CC	100
T1123	.250 (1/4) x #10 stud	DD	10
T1123C	.250 (1/4) x #10 stud	DD	100
T1124	.250 (1/4) female x #6 screw	EE	10
T1124C	.250 (1/4) female x #6 screw	EE	100
T1125	.250 (1/4) 2 male x 1 female	FF	10
T1125C	.250 (1/4) 2 male x 1 female	FF	100
T1129	12-8 .250 (1/4) compressor terminal	HH	10
T1129C	12-8 .250 (1/4) compressor terminal	HH	100
T1130	16-14 .250 (1/4) compressor terminal	HH	10
T1130C	16-14 .250 (1/4) compressor terminal	HH	100
Wire Connectors			
T1150	small blue wire nut with spring insert	JJ	20
T1150C	small blue wire nut with spring insert	JJ	100
T1151	medium orange wire nut with spring insert	JJ	15
T1151C	medium orange wire nut with spring insert	JJ	100
T1152	large yellow wire nut with spring insert	JJ	15
T1152C	large yellow wire nut with spring insert	JJ	100
T1153	extra large red wire nut with spring insert	JJ	10
T1153C	extra large red wire nut with spring insert	JJ	100
T1161	small yellow wire nut without insert	JJ	20
T1161C	small yellow wire nut without insert	JJ	100
T1162	medium white wire nut without insert	JJ	20
T1162C	medium white wire nut without insert	JJ	100
T1163	large white wire nut without insert	JJ	20
T1163C	large white wire nut without insert	JJ	100
High Heat Porcelain Wire Connectors (Up To 1800 F)			
T1164	small #1 high heat porcelain wire nut	KK	15
T1164C	small #1 high heat porcelain wire nut	KK	100
T1165	medium #3 high heat porcelain wire nut	KK	15
T1165C	medium #3 high heat porcelain wire nut	KK	100
T2070	large #7 high heat porcelain wire nut	KK	10
T2070C	large #7 high heat porcelain wire nut	KK	100
Scotchlok Electrical Spring Connectors			
T1166	small yellow	LL	15
T1166C	small yellow	LL	100
T1167	medium red	LL	10
T1167C	medium red	LL	100
T1168	large gray	LL	5
T1168L	large gray	LL	50
T1169	extra large blue	LL	5
T1169L	extra large blue	LL	50
Banana Plug			
T1179	includes black and red insulators	NN	1 pair
Heavy Duty Alligator Clips			
T1186	small includes black and red insulators	OO	1 pair
T1187	medium includes black and red insulators	OO	1 pair
T1188	large includes black and red insulators	OO	1 pair
Alligator Clips			
T1191	small standard clips	PP	10
T1192	medium standard clips	PP	5
T1193	medium for use with test leads	PP	5
T1196	small includes black and red insulators	QQ	3 pair
T1197	medium includes black and red insulators	QQ	1 pair

* #1 12-10 Wire
 * #3 18-14 Wire
 * #7 8-10 Wire





Leak Lock and Leak Lock GOLD with Teflon

A resin based soft setting brushable paste pipe joint compound resistant to all refrigerants, oils, water and most chemicals, liquids and gases.

- Use with pressures to 10,000 PSI to full vacuums.
- Temperature range -200°F (-93°C) to 400°F (204°C).
- It never hardens and it never becomes brittle.
- Ideal for joining all metals, plastics and other materials.
- Will stick to all clean surfaces.
- Prevent vibration from loosening nuts, bolts, plugs and fittings.
- Non Toxic
- GUARANTEES A PERFECT SEAL... UNDER ALL CONDITIONS



PART NO.	SIZE	PACKAGING
LEAK LOCK		
HS10001	1-1/3 oz TUBE	12/CASE
HS10004	4 oz Brush Top Plastic Jar	12/CASE
HS10016	16 oz Brush Top Plastic Jar	12/CASE
HS10128	1 Gallon Can	1
LEAK LOCK GOLD		
HS11001	1-1/3 oz TUBE	12/CASE
HS11004	4 oz Brush Top Plastic Jar	12/CASE
HS11016	16 oz Brush Top Plastic Jar	12/CASE
HS11128	1 Gallon Can	1



Red Epoxy

When you need a sealant you can count on.

High Performance, Heat Cured, Two Part, Epoxy Kit

- Exhibits a Color Change When Cured (Turns Gold)
- May Be Cured With a Hot Air Gun or Open Flame in Minutes
- -100°F (-73°C) to 300°F (149°C)
- Working Pressure in Excess of 3000 PSI
- Tensile Strength: 6000 PSI
- Works on Vertical Surfaces
- Pressure Tested to 3000 psi
- Simple, Quick Mixing & Application
- Oil, Gas, Fuel & Solvent Resistant
- No Rush, No Wait, You Control Curing Time
- Equipment is Serviceable Immediately
- Use on All Metals and Rigid Plastics
- HVAC & Refrigeration
- Plumbing & Appliances
- Automotive & Marine
- Petrochemical, Manufacturing
- Industrial, Commercial, Institutional

PART NO.	SIZE	PACKAGING
HS12001	Kit Including 2 1/2 oz Tubes	12/CASE



Solderlene

High Quality, Paste Type, Non-Acid Soldering Flux.

- Industrial strength wetting agents to promote solder flow
- For use with low and mid-temp. soft solders, both lead and lead-free
- Effective on all metals except aluminum and magnesium.
- Brush Top Plastic Jars

PART NO.	SIZE	PACKAGING
HS30004	4 oz	12/CASE
HS30016	16 oz	12/CASE



Thawzone

(New Formula)

The original liquid dehydrant, frees your frozen system in minutes. It seeks out moisture and chemically bonds to it.

- Enhanced moisture control in even the most advanced systems.
- Aids with oil return in low temperature systems.
- Compatible with all refrigerants and refrigeration lubricants.
- Helps prevent the formation of acid.
- No Methanol
- Environmentally Sound
- Safer
- Biodegradable, non-polluting
- Non-Poisonous

Add 1/8 fluid ounce (3.75 ml) of THAWZONE directly to the refrigerant of any system for every 1 lb. Of refrigerant in the system.

*HIGH SIDE SYSTEM INJECTOR (part no. HSINJ001) IS RECOMMENDED FOR INTRODUCING THAWZONE INTO AN OPERATING SYSTEM.

PART NO.	BOTTLE SIZE	PACKAGING
HS17001	1 oz	24/CASE
HS17004	4 oz	12/CASE
HS17016	16 oz	6/CASE





Highside System Injector

Use for introducing any liquid into the low side of a charged hermetic system.

- Entirely reusable
- Constructed of rugged aluminum for long life
- Designed for use with any standard manifold gauge and requires no extra valves or fittings
- Drip proof, no spill design takes the mess out of maintenance
- Helps prevent the venting of refrigerants into the atmosphere.
- Prevents the introduction of air into an operating system.
- It can be used on sealed operating systems to avoid shutdowns.
- Use with Trace, Trace 2, Thawzone and Acid Neutralizer
- Compatible with all refrigerants



PART NO.	PACKAGING
HSINJ001	1



Gas Leak Detector Low Temp

Leaks appear as large strong bubbles which cling to the surface and are fluorescent under a black light.

- Non-freezing
- Fluorescent
- Rated to -30°F (-34°C)
- Non-toxic
- Non-hazardous
- Bubble-type gas leak detector

Use On:

- Hot and cold piping
- Natural Gas
- Most Gases
- Air
- All Refrigerants



Gas Leak Detector Mid Temp

Same as above except:

- Rated to 27°F (-3°C)

PART NO.	CONTAINER SIZE	TYPE	PACKAGING
Low Temp			
HS22008	8 oz	Plastic Bottle w/Dauber	24/CASE
HS22032	32 oz	Trigger Sprayer Bottle	12/CASE
HS22128	1 GAL.	Plastic Bottle	6/CASE
Mid Temp			
HS23008	8 oz	Plastic bottle w/Dauber	24/CASE
HS23032	32 oz	Trigger Sprayer Bottle	12/CASE
HS23128	1 GAL.	Plastic Bottle	6/CASE



Trax

Bubble-type liquid leak detector formulated to produce long lasting bubbles under 'job-site' conditions.

- Clear
- No Cleanup
- Environmentally Friendly
- Evaporates Leaving No Residue
- Temp Range: 27°F (-3°C) to 200°F (93°C).
- Non-Toxic
- Does Not Pit Surfaces
- Detects Leaks as Small as 1 Micron
- Oxygen Compatible

Meets the performance requirements of Military specifications:
MIL 25567 Type I A, B & C.

PART NO.	CONTAINER SIZE	TYPE	PACKAGING
HS24000	1-1/3 oz	Squeeze Bottle	24/CASE
HS24010	10 oz	Squeeze Bottle w/ Extensible Spout	12/CASE
HS24128	1 GAL.	Bottle	6/CASE



Trace2

A red penetrant dye in a polyolester base that is completely compatible with all refrigerants and lubricants, old and new. Use to locate the hardest to find leaks under the toughest conditions in low light or dark areas.

- Leaks show as bright red stains
- For refrigeration and hydraulic systems
- Florescent with any ultraviolet light source
- Non-volatile and will not sludge or deposit gum
- Clearly visible, even through ice and frost
- Locates leaks exactly, no false positives



Trace

A red penetrant dye in a mineral oil base that is completely harmless to refrigeration, air conditioning and hydraulic equipment.



Hydro Trace

Locate hard-to-find leaks in any closed system containing water and/or antifreeze compounds such as Propylene Glycol and Ethylene Glycol. When added to a system leaks are easily visible as bright red stains under normal lighting conditions and as a bright orange glow when exposed to an ultraviolet light source.

Applications Include:

- Refrigeration
- Hydronics
- Automotive
- Process Cooling
- Chemically Inert
- Will not harm equipment or seals

Trace2 and Trace are the easiest and least expensive way to locate leaks in an operating system and are for use in systems where the lubricants travel with refrigerants.

WITH SUPERBRITE UV TRACER

PART NO	CONTAINER SIZE	PACKAGING
TRACE2		
HS21004	4 oz Plastic Bottle	12/CASE
HS21016	16 oz Plastic Bottle	6/CASE
HS21128	1 Gallon Can	4/CASE
TRACE		
HS20004	4 oz Plastic Bottle	12/CASE
HS20016	16 oz Plastic Bottle	6/CASE
HS20128	1 Gallon Can	4/CASE
HYDRO TRACE		
HS26004	4 oz Plastic Bottle	12/CASE
HS16016	16 oz Plastic Bottle	6/CASE
HS26128	1 Gallon Can	4/CASE



SPIRO LITE UV BULB

120 Volt Florescent UV Light Source For Your Light Trouble

PART NO.	PACKAGING
HSUVB001	1

DYE WASH

Removes any type of leak detecting dye from equipment and Pipe surfaces to prevent false readings during future and follow-up leak detection.

- Non-Toxic
- Environmentally Friendly
- Non-Corrosive
- Safe on All Metals
- Easy To Use
- Safe on Plastic & Rubber



PART NO.	CONTAINER SIZE	PACKAGING
HS51032	32oz Spray Bottle	12/CASE
HS51128	1 GAL. Pastic Bottle(Refill)	6/CASE

* MSDS Sheets are available for all chemicals, visit www.supco.com



The Acid Test

4 COMPLETE TESTS IN EACH KIT

For detecting the presence and formation of acid in air conditioning and refrigeration systems

- Easy to use
- No Complicated Charts
- Results in Seconds
- Very Inexpensive
- Non-Toxic
- Non-Hazardous
- Accurate Results
- Eliminates Guess Work
- Safe Formula
- Biodegradable
- Non-Flammable
- For use with all Refrigerants



PART NO.	PACKAGING
HS16001	12/CASE

Simple to Understand Color Change Indicators!

- BLUE OR VIOLET No Acid Present
- GREEN Moderately Acidic
- YELLOW Acidic



Acid Neutralizer

The BEST Acid Treatment available neutralizes residual acid caused by compressor burnout. *The Cure for Acid Problems.*

- Works Fast
- Circulates Quickly
- Compatible with ALL Lubricants
- Safe, Will Not Harm System Components
- No Complicated Charts
- No Solids or Solid Residuals
- Compatible with ALL Refrigerants
- Neutralizes Acid in Recovery Equipment
- Easy to Use
- Can Prevent Compressor Burnout

A vital part of any preventative maintenance program.

PART NO.	BOTTLE SIZE	PACKAGING
HS18004	4 OZ.	12/CASE

Super Flush

AC/R Internal System Cleaner

Neutralizes and Removes Acid Caused By Compressor Burnout

- Biodegradable
- Easy to Use
- Cleans in a Single Treatment
- Compatible with All Refrigerants and Refrigeration Oils
- Does Not Contain Halogenated Solvents
- Cleaning Agent for all A/C and Refrigeration Parts
- Environmentally Safe
- Non-Flammable
- Saves Time and Money

Use:

- Before a system retrofit
- After a compressor burnout
- Recovery, Recycling and Reclamation Equipment
- On automotive (Remove immediately)

One Treatment Cleans and Removes:

- Sludge
- Tar
- Moisture
- Carbon Deposits
- Mineral Acids
- Organic Acids
- Soot
- Debris
- Gum
- Grease



PART NO.	CONTAINER	PACKAGING
HS55032	32 oz Plastic Bottle	12/CASE
HS55128	1 Gal. Plastic Bottle	6/CASE





PINK STUFF

Heavy Duty, Foaming, Acid Based Concentrated Liquid Coil Cleaner
Foaming Action Pushes Dirt Out of Coils to be Rinsed Away.

- Non Flammable
- Easy to Use
- Non Oily
- Biodegradable

Cleans and Brightens:

- Condenser Coils
- Evaporator Coils
- Equipment Surfaces

Effective On:

- Heavy Oxidation
- Grease
- Algae
- Oily Dirt
- Mold
- Oils
- Lint
- Mildew

Easily Applied Using Standard Low Pressure Sprayer

PART NO.	CONTAINER	PACKAGING
HS58128	1 Gal. Plastic Bottle	4/CASE



GREEN STUFF

Concentrated Alkaline Based Liquid Coil Cleaner

- Non Flammable
- Biodegradable
- Fast Acting
- Brightens
- Non Oily

For Heavy Duty Cleaning and Degreasing of:

- Condenser Coils
- Fins
- Permanent Filters
- Evaporator Coils
- Electronic Cells
- Equipment Surfaces

Effective On:

- Grease
- Dust
- Mildew
- Tar
- Dirt
- Lint
- Algae
- Oil
- Mold
- Nicotine

Self Rinsing on Evaporator Coils and is Easily Applied with a Low Pressure Sprayer.

PART NO.	CONTAINER	PACKAGING
HS59128	1 Gal. Plastic Bottle	4/CASE



EV Coil Max

Powerful Coil Cleaner in Powder Form to Avoid Dangerous Liquid Spills.

- Environmentally Friendly
- Virtually Odorless
- Easy to Use and Clean Up
- Lowers Freight Costs*(13 to 1)
- Extra Long Shelf Life
- Its powder form is a safer alternative to liquid coil cleaners
- No Acidic Residue
- Fast Acting
- Prevents Corrosion
- Less Storage Space*(16 to 1)

*16 oz equals 1 gallon 6:1 (9 lbs or 144oz weight) solution

PART NO.	CONTAINER	PACKAGING
HS56011	16 oz Plastic Jar	12/CASE



HL Coil Brite Coil Cleaner

Acid Based, Powder Coil Cleaner with Controlled Foaming Action

- Clean the Toughest Coils
- Mild Odor
- Indefinite Shelf Life
- Nonflammable
- Lowers Freight Costs*(13 To 1)
- Easy to Use
- No Dangerous Liquid Spills
- Makes Old Coils Look New
- Easy Rinse for Quick Cleaning
- Less Storage Space*(16 to 1)

*14oz equals 1 gallon 6:1 (9 lbs or 144oz weight) solution

PART NO.	CONTAINER	PACKAGING
HS57014	14 oz Plastic Bottle	12/CASE



Coil Blaster Solvent

Solvent Based High Pressure Aerosol Coil Cleaner

- Pleasantly Scented
- Basting Aerosol Nozzle
- Nonflammable
- No Residue
- Degreases
- Fast Drying
- Easy To Use
- Nonconductive
- No Cleanup
- Safe To Use On Equipment While Running

Effective On:

- Dirt
- Grime
- Grease
- Oil

PART NO.	CONTAINER	PACKAGING
HS58520	18 oz Aerosol Can	12/CASE

Use On:

- Evaporator Coils
- All HVAC/R Equipment
- Automotive Parts
- Condenser Coils
- Electrical Equipment
- Electrical Components



HD Jet Foamer Coil Cleaner

Heavy Duty Foaming Coil Cleaner in an aerosol can

- Convenient
- Pleasant Scent
- Environmentally Friendly
- No Ozone Depleaters
- 360
- No Chlorinated Solvents
- Easy to Store
- Water Based
- Nonflammable
- Corrosion Inhibitors
- Spray Nozzle

Use On:

- Evaporator Coils
- Condenser Coils

Will Not Harm Plastics, Metals or Surrounding Equipment

PART NO.	CONTAINER	PACKAGING
HS59520	19 oz Aerosol Can	12/CASE

Quickly and Easily Liquifies:

- Dirt
- Residues
- Grease
- Deposits
- Oil

Chemicals





ICEMAX Nickel Safe Ice Machine Cleaner

High Performance Ice Machine Cleaner in a Powder avoids dangerous and messy spills that can damage your facility, vehicles and destroy other valuable inventory. Prevents liquid spills that can attract unnecessary regulatory attention.

- Inhibits Formation of Scale
- Prevents Corrosion
- Environmentally Friendly
- Will Not Separate or Chemically Change Over Time
- Indefinite Shelf Life (When Kept Sealed)
- Saves Freight Costs
- Maximum Scale Removing Power
- No Acidic Residue
- Makes 1 Gallon of Concentrated Cleaner

PART NO.	BOTTLE SIZE	PACKAGING
HS50004	4.4oz	12/CASE



Filter Fan & Vent Cleaner

Heavy duty cleaner specifically formulated for the heating, ventilation, air-conditioning and refrigeration industry.

- Biodegradable
- Non-Corrosive
- Easy to Use
- Environmentally Friendly
- Non-Toxic
- Safe & Effective

Removes:

- Dust
- Grease
- Tar Deposits
- Dirt
- Oil

Use On:

- Electronic Cells
- Permanent Air Filters
- All Vents & Vent Surfaces
- Most Air Cleaning Equipment
- Permanent Pre-Filters
- Fan Blades, Plastic & Metal
- Equipment Surfaces

PART NO.	CONTAINER	PACKAGING
HS52032	32oz Plastic Spray Bottle	12/CASE
HS52128	1 Gal. Plastic Refill	6/CASE



Mainsqueeze

Industrial strength citrus hand cleaner

- Safe
- Moisturizes and Conditions
- Water Rinse or can be Wiped Dry
- Twice the cleaning power of any other hand cleaner.
- Citrus Terpenes and other natural emollients to cut through the tough, hard to remove elements.
- Biodegradable
- Refreshing and Pleasant Scent

Twice the cleaning power of any other hand cleaner. Citrus Terpenes and other natural emollients to cut through the tough, hard to remove elements.

- Dirt
- Odors
- Paints
- Grease
- Resins
- Rubber, Gasket and Tile Cements
- Grime
- Inks

Available with or without pumice in 8 oz. pocket squeeze tube or 1 gallon portable container with pump dispenser.

PART NO.	CONTAINER	PACKAGING
HS40008	8 oz Tube w/Pumice	12/CASE
HS40128	1Gal. Dispenser w/Pumice	4/CASE
HS41008	8 oz Tube w/o Pumice	12/CASE
HS41128	1 Gal. Dispenser w/o Pumice	4/CASE



CDC Anti-Clog

Condensate Drainpan Conditioner

Laboratory proven to kill 99% of Legionnaire's Disease bacteria and a broad spectrum of harmful bacteria including those causing the common cold and other respiratory ailments.

- EPA Registered
- Improved Chemical Formulation
- Water activated timed-release
- 3 to 6 months, 24 hours/day service
- Works in equipment of all sizes (Available in 2 Sizes)
- Filter material meters biocide for consistent chemical release
- Sealed, tamper proof housing prevents skin contact w/ biocide
- Designed not to clog drain hole
- Can be placed vertically or horizontally
- Ph neutralizers help protect drainpan against corrosion
- 40% more high efficiency biocide (by weight)

Use CDC_ANTI-CLOG* wherever there is Air Conditioning and Refrigeration Equipment

PART NO.	SIZE	PACKAGING
HS52105	Units up to 5 Tons	24/CASE
HS52115	Units up to 15 Tons	12/CASE



ICE BLOCK Heat Transfer & Anti-Freeze

Propylene Glycol based anti-freeze and heat transfer fluid capable of providing pipe

burst protection to temperatures as low as -100° (-73°C). All ingredients are generally regarded as safe by the FDA, making ICE BLOCK the recommended anti-freeze protection where there is possible contact with potable water sources.

- Non-Toxic
- Chemically Stable - Will Not Separate
- Maximum Heat Transfer
- Protects Pipes and Other System Components From Freeze Damage
- Safe and Easy to Use
- Lubricates As It Works
- Safe For Use Where Contact with Potable Water is Possible
- Maximum Corrosion Protection
- Will Not Leave Deposits

Applications Include:

- Refrigeration Systems
- Chilled Water Systems
- Coil Defrosting
- Ice Making Machines
- Water Based Heat Extraction System
- Snow Melting Systems
- Hydronic Heating Systems
- Solar Heating & Hot Water Systems
- Cooling Systems & Chillers
- Immersion Freezing
- Air Hydronic, Heat Pumps & Furnaces.
- Winterization of Any WaterBased Systems
- Process Cooling
- Ground Water Coupled Heat Pumps
- Cooling Towers
- Industrial Heat Transfer Systems
- Fire Hydrant & Sprinkler System

PART NO.	BOTTLE	PACKAGING
HS15128	1 Gallon	6/CASE

* MSDS Sheets are available for all chemicals, visit www.supco.com

SUPCO88 Oil Additive



Introduced in 1954 and valued worldwide, this super lubricant is a "must use" in repair and preventative maintenance programs.

- Compatible with all refrigeration oils
- Dissolves sludge buildup on bearing and valve surfaces
- Prevents binding of high speed compressors
- Prevents excess wear in motors and compressors

Part No.	Bottle Size	Packaging
S8	8 OZ.	24/CTN
S16	16 OZ.	15/CTN

Application Notes:

To Prevent Excess Wear on Expansion Valves and Capillaries
Mix one part SUPCO88 to 9 parts refrigeration oil.

- Prevents excess wear on expansion valve needles and seats.
- Penetrates the pores of ALL moving metal parts of the expansion valve for constant lubrication.

Extend the Life of ALL Motors (i.e. for Blowers Air Conditioners)

- A few drops will help free a "frozen" or sticking motor shaft
- Mix 9 to one for regular bearing maintenance.
- Decreases "bearing to shaft" friction and sludge accumulation when mixed 9 to one.

More Efficiency for High Speed Compressors

- Increases the lubricating capability of mineral oils in high speed compressors.
- Used in new units to reduce current draw by reducing friction and preventing overloading.
- SUPCO 88 can be left in the system permanently.

Zoom Spout® Oiler



A paraffin base, non-gumming, high quality lubricating oil

- All-Purpose Lubricating Oil
- Flexible spout extends and retracts, adjusts to any "in-between" length
- Withstands high temperatures without breaking down
- Viscosity 92-99 @ 140°F
- Counter Display Case

Applications

- All types of motors, blowers, oil burner bearings, linkages, appliance pumps, etc...
- Normal and High speed shaft bearings

Part No.	Bottle Size	Packaging
M098 Zoom Spout	4 oz	12/CASE
M044 Rust Buster	4 oz	12/CASE

Rust Buster® Solvent



Dissolves Rust

- Telescoping Pullout Spout
- Loosens rust in seconds
- No lingering odor
- Counter Display Case

SPOT-IT Leak Detector



- Produces a fluorescent bubble when a leak is detected
- Works in all pressurized systems (i.e. air, nitrogen, CO2, natural gas, etc..)
- Does not stain and is easily rinsed clean.
- A corrosion resistant agent on metal parts (when left to dry).
- Leak Locator Range: +40° to +200°F

Part No.	Bottle Size	Packaging
SFL-8	8 oz with Dauber	24/CASE

KLEEN-AIR Odor Absorber



- Simply open the spout to absorb and remove all kinds of odors.
- One 8 ounce bottle works for 1 year in a 9' x 12' room

Part No.	Bottle Size	Packaging
KA12	8 OZ.	12/Case
KA36	8 OZ.	36/Case*

*KA36 case is a counter display 13" x 13" x 15"

SIMPLE GREEN Cleaner/Degreaser

Concentrated, nontoxic, biodegradable and F.D.A. approved for use in the food service industry.

Simple Green

Part No.	Description	Packaging
13012	24 Oz. with trigger spray head	12/Case

Crystal Simple Green

Part No.	Description	Packaging
19024	24 Oz. with trigger spray head	12/Case
19128	1 Gallon container	6/Case





Acid Test Kit

Tests for damaging acid in refrigerants

- Kit contains 5 acid pads and solution for 20 tests
- Economical and easy to use
- Test requires only one drop of refrigerant oil
- Test takes one minute
- Gas does not have to be evacuated from compressor

Acid in a system can cause:

- Clogged cap tubes
- Defective fan motors
- Dirty condensers
- Defective run capacitors
- Low voltage
- Cycling of overloads
- Open start capacitors
- Defective start relays

Part No.	Packaging
AT5	Each



APOXI Repair Kit

For repairing aluminum evaporators

- Kit contains 2 tubes of APOXI, vial of methyl ethyl ketone, mixing sticks and emery cloth.
- Cures in 12 hours
- Tested at 1500 PSIG with R12, R22 and R502.

Applications

- Repairs leaks in aluminum evaporators
- Repairs leaks in copper to aluminum joints and other metals
- Eliminates electrolytic action between dissimilar metals

Replaces: EP538

Part No.	Packaging
APOXI	Each



PLASTI-FIX TABS Plastic Repair

- Repairs cracked or broken door liners, cabinet liners and more

Part No.	Description	Size	Packaging
PF045	Almond	3.5 oz	Each



Epoxy Putty

- Cures Wet or Dry - will cure underwater
- Mixes like clay hardens like steel
- After curing, can be sanded, drilled, tapped, machined, sawn, or painted.
- Initial set in 10 to 15 minutes, hard set 1 hour, with full cure in 24 hours.
- Temperature range -65 F to +250 F
- Works on glass, wood, plastic, fiberglass, tile, concrete, and many more.

SUPCO Part No.	Description	Quantity Per Carton	Replaces Gem No.
9900H	Tan Epoxy Putty 4 inch blocks	24	—
9900K	Tan Epoxy Putty 8 inch blocks	24	—
9901K	Tan Quick Epoxy Putty 4 inch blocks	24	—
9904H	White Epoxy Putty 4 inch blocks	24	EP8002 Half-size
9904K	White Epoxy Putty 8 inch blocks	24	EP8002
9906H	Aluminum Epoxy Putty 4 inch blocks	24	EP8001 Half-size
9906K	Aluminum Epoxy Putty 8 inch blocks	24	EP8001
9915K	White Fast Set Epoxy Paste	24	—



STARBRITE Liquid Electrical Tape

Seals and Protects Electrical Connections

- Re-insulate cracked insulation without disconnecting wire
- Saves time
- Includes application brush

Part No.	Size	Packaging
84104	4 oz	1/CTN

* MSDS Sheets are available for all chemicals, visit www.supco.com