



The Multi-Platform Windows
98/NT/2000 or XP compatible
software package LabPower Junior
provides a convenient and easy-to-use
well-proven software environment
basic routine applications including
control of all standard accessories for
the spectrophotometers ANTHELIE
Light & Advanced or Uvi Light XS, XT,
XTD and PC.

Available Analytical Methods

- **Fixed Wavelength** provides data in Abs, log Abs, %T or concentration and calculates calibration curves using up to 33 standards via linear and quadratic regression or linear integration. All standard curves can be stored on hard disk for later concentration measurements.
- **Wavelength Program** allows data acquisition at 2-14 wavelengths with a high slewing speed. Real time as well as Post run calculations of ratios and differences can be made in single mode or repeated at user defined time intervals.
- **Wavelength Scan** provides a variety of scan speeds to acquire spectra from your individual samples. Spectrum rescaling is automatic or user defined. Scanning can be automatically repeated at user selected time intervals. Real time as well as post run calculations include automatic baseline subtraction,

peak and/or valley determination, overlay of curves and derivative calculation.

- **Time Drive** provides a selection of sampling rates to allow acquisition of kinetic data at very high speed (up to 2000 data points per minute) or over a long period of time (15 hours). Real time as well as post run calculations are available similar to wavelength scan plus kinetic activity calculations.

Calculation Functions

- Enzyme activity calculations by linear regression.
- Calibration function via linear or quadratic regression as well as linear interpolation.
- Curve addition, subtraction, multiplication and division.
- 1st to 4th derivatives.
- Wavelength ratio, difference and base point.
- Multi cursor with coordinate values

displayed.

- Zoom function.
- Detection of peaks and/or valleys
- Overlaid curves in graphical or tabular format.

Report Capability

- Customization and storage of individual analytical reports, automated print feature.

Routine Power in UV/Vis Spectroscopy

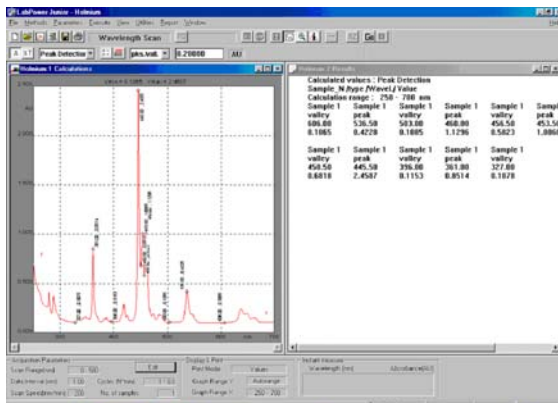
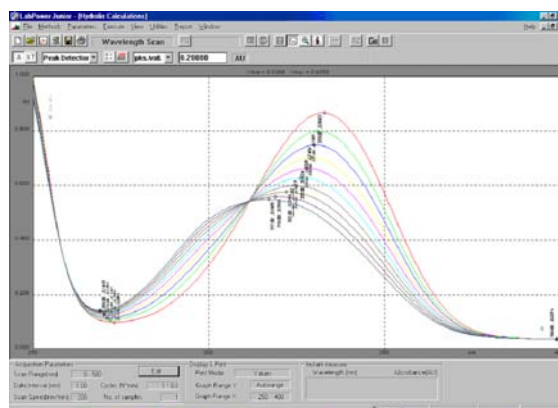


File Conversion

- For direct use with spreadsheets, numerical analysis or desktop publishing software packages
- Data file conversion into ASCII
- Data file conversion into EXCEL
- Graphic formats

Data Storage Capabilities

- Data from all analyses are stored on hard disk with specific file extensions to allow easy post run procedures.
- Data and method files are stored with identification and comments



System requirements

- Pentium PC with 64 MB of RAM minimum, 50 MB of free disk space, 1 free RS232 Port and Windows 98/NT/2000 or XP as Operating System, Desktop Computer or Notebook
- Optional Printers: all standard Windows Printers

Ordering information

- 70MI05 I0 LabPower Junior Windows software for ANTHELIE Light & Advanced or Uvi Light XS, XT, XTD & PC.

Standard delivery

- CD-ROM LabPower Junior software, RS232C connection cable DB9/DB9, safety software key, operation manual.

SECOMAM products are available from

SECOMAM

SECOMAM est certifiée ISO 9001-2000. Tous les produits sont conformes CE.

Plus d'info sur SECOMAM : www.secomam.com

