

www.scotsman-ice.co.uk




Scotsman[®]

Ice Systems

The one the world relies on.[™]




Hubbard ice
Systems

Product
Catalogue
2007/2008





Nightclubs, Pubs and Bars

Hubbard Ice Systems and Scotsman are 'ice experts' in meeting the needs of the hospitality trade. Scotsman Supercube or Gourmet cubes are the most popular type of ice cubes in use in UK restaurants, pubs, and clubs. Made in the famous Scotsman thimble shape, they are available in three different sizes. Their clarity makes them the perfect choice for drinks presentation whilst their purity ensures that they are slow melt. Their unique shape means that these cubes are less prone to sticking together in the ice bucket as well as being easier to handle than the more traditional square cube.

Supercubes are made by spraying water upwards into an inverted mould. Inverting the mould means that any sediment or impurities in the water fall back down, leaving only pure water to form the cube making these cubes very hard.

Supercubes nestle in the glass for high liquid displacement, which means better quality drinks for customers, less 'splash back' and higher profits for operators.

Scotsman Contour Ice cubes are perfect for general purpose cooling of drinks and have a 'pillow' shape. This helps to prevent 'splash back' when the cube is put into the drink, making them ideal for busy bars. The thin slivers of ice can also be used for displaying fresh food, so these cubes are the perfect compromise for outlets such as bars, restaurants and cruise ships where ice is needed for both drinks and food.

For full advice on ice types, tips on hygiene, FREE cocktail recipes and SPECIAL OFFERS visit www.perfectice.co.uk

Hotels, Motels and Resorts

Scotsman produces ice dispensers for hotels and for counter tops in self-service restaurants. Designed as the most hygienic method of delivering ice, the ice bucket is sealed away so that there is no threat of contamination. The counter-top versions can deliver either ice and water or just ice. The designs are as hands free as possible, with models using either a 'magic eye' or a push button to dispense ice, which is delivered straight into the waiting container.

Scotsman Nugget Ice is made from random cylindrical sized pieces of hard compacted flake ice which has a slow melt rate and is ideal for self service dispensing.

Restaurants, Fast Food Outlets, Cafeterias, Delicatessens

Ideal for salad buffets, blended drinks or meat displays, Scotsman Flake and Nugget Ice offers cooling power and slow-melting capability with low production costs. Food Service specialists use Scotsman Scale Ice to prepare a layer of scale and flake ice on fish and seafood displays. The result is a combined effect of longer lasting freshness and natural appearance of fresh food.

Scotsman Contour Ice cubes are perfect for general purpose cooling, thin slivers of ice are used for displaying fresh food, and are the perfect compromise for outlets such as bars, restaurants and cruise ships where ice is needed for both drinks and food.

Scotsman Flake and Superflake Ice are small irregular flakes of ice with an even melt rate and are ideally suited for the display of fish, meat, salads and other perishable goods.

Supermarket Displays

For meat, seafood, fruit and vegetable markets, Scotsman has ice machines designed specifically to meet retail needs. From flake and nugget ice for displays to cube ice for in-store delicatessens, Scotsman offer a wide variety of ice forms for different applications.

Health Care

For patient care, laboratory use or for foodservice, Scotsman has ice machines designed specifically to meet the requirements of health care facilities with hygienic hands free dispensers.

Scotsman Nugget Ice is often preferred for patient care because it is soft and chewable, so it doesn't present the choking risk of cubed ice; and because nugget ice melts slowly and will not clump, ice bags remain functional and mouldable for long periods.

For Emergency Rooms & Laboratories

Scotsman SuperFlake Ice is the driest form of flake ice with exceptionally slow melt rates and can be moulded to pack around limbs, for organ transportation and for general laboratory work.

Extruded at a temperature just below zero degrees it is available in two different levels of moisture, with superflake having the driest and most compressed individual flakes of ice.

Food Storage, Deep Sea Fishing, Fish Processing, Manufacturing & Industrial Uses

Scotsman Industrial Scale & Flake Ice Machines are ideal for a wide variety of applications where large quantities of consistently high quality ice are required. On land Scotsman Scale & Flake Ice is ideal for supermarkets, meat markets, fish markets, bakeries, delicatessens, food processors and are ideal for mounting on mobile platforms for use in vegetable picking and processing industries.

Scotsman Scale & Flake Ice is also used in a wide variety of industrial and chemical processes including the retardation of concrete and cement. Producing a dry ice that has slow melting capability and high cooling power, these machines have large production capacities from 110 - 5,000 Kg. of ice per day.

Scotsman Scale Ice is sub-cooled with a temperature range of the ice scales varying between - 6°C and - 12°C. The thickness of the scales can be varied between 1.5 mm, as preferred in the meat processing industry, to 3 mm as demanded by the fishing industry, industrial processes and perishable goods transporters. Scale ice is used in a wide range of industrial, medical, research and retail environments and is highly prized by supermarket specialists, who use it to prepare a double layer of scale and flake on fish and seafood displays. The result gives a combined effect of longer lasting freshness and natural appearance of the displayed food with slower ice melt than pure flake ice.

Supercube Ice/Gourmet Cubes



The most popular type of ice cubes, these are the perfect choice for restaurants, pubs, and clubs.

Made in the famous Scotsman thimble shape, they are available in three different sizes. Their clarity makes them the perfect choice for drinks presentation whilst

their purity ensures that they are slow melt. Their unique shape means that these cubes are less prone to sticking together in the ice bucket as well as being easier to handle than the more traditional square cube.

Supercubes are made by spraying water upwards into an inverted mould. Inverting the mould means that any sediment or impurities in the water fall back down, leaving only pure water to form the cube making these cubes very hard.

Dice Ice



The shape of dice cubes provides maximum liquid displacement making this type of ice cube ideal for general purpose cooling of drinks. They can be made very quickly and are ideal for outlets needing high volumes of ice, such as fast food outlets,

although they are also a great general purpose ice cube used throughout the hospitality industry. Dice cubes are available in two different sizes to suit your needs best.

Water is poured over the surface of a vertical evaporator grid plate with each cube forming in a cell on the grid. This is the most cost-efficient system where volume is the prime importance. The machine is compact and therefore requires less floor space than a machine with a horizontal evaporator.

Contour Ice



These cubes are perfect for general purpose cooling of drinks and have a 'pillow' shape. This helps to prevent 'splashback' when the cube is put into the drink, making them ideal for busy bars. The thin slivers of ice are also used for displaying fresh food, so these cubes are the

perfect compromise for outlets such as bars, restaurants and cruise ships where ice is needed for both drinks and food.

Water is poured over the surface of a vertical evaporator plate divided into a grid of contoured cells. Each cube is formed in one cell. This enables high volume production in a compact, cost-efficient machine.

a variety of applications including fisheries, laboratories and industry.

Flake Ice offers the best solution for maintaining refrigerated perishables where long-lasting freshness and natural appearance need to be guaranteed.

Scotsman Flake Ice machines offer the widest range of production capacities available. Compact or split, self-contained or modular, Scotsman machines fit virtually any space and capacity requirement, and are selected as the choice of the most demanding food processing and industrial production companies around the world.

Scale Ice



Scale Ice is sub-cooled ice where the temperature range of the ice scales may vary between - 6° and - 12° Celsius.

Scotsman Scale Ice machines manufacture ice in a range of thicknesses: The ice ranges

from 1.5 mm, as preferred by the meat processing industry, to 3 mm as demanded by the fishing industry, to best suit processing and transport requirements.

Supermarket specialists use Scale Ice to prepare a layer of scale and flake ice on fish and seafood displays. The result is a combined effect of longer lasting freshness and natural appearance of the fresh food, with slower ice melt than with flake ice.

Scotsman Scale Ice machines are available in both fresh and saltwater variants for both ice formation and as a coolant.

Cubelet Ice



Hands-free dispensed ice made from hard compacted flake ice in a uniform cubelet shape with a slow melt rate.

Nugget Ice



Modular and hands-free dispensing ice, made from random cylindrical sized pieces of hard compacted flake ice which has a slow melt rate.



Flake Ice

Flake Ice is ice in its most natural shape. Extruded at a temperature just below zero degrees. Scotsman flaked ice suits



Cube Ice	Page	MFE61	20
ACM 25	4	MF83	20
ACM 6 Series	5-6	FME804	21
EASY FIT 6 Series EC	7	FME1204	21
MC16	8	MF58-68 SPLIT	21
MC46	8	MF83 SPLIT	21
MC1210	8	STORAGE BINS	22
CD40	9	Scale Ice	Page
TC180	9	EVE 201 SPLIT	23
MV300	10	EVE 301 SPLIT	23
MV450	10	EVE 401 SPLIT	23
MV600	10	EVE 651 SPLIT	23
MV800	11	EVE 801 SPLIT	23
MV1000	11	EVE 1001 SPLIT	24
CM450SL	12	EVE 1301 SPLIT	24
CME456	12	EVE 1501 SPLIT	24
CME506	12	EVE 2401 SPLIT	24
CME656	13	EVE 200 COMPACT	25
CME1656	13	EVE 300 COMPACT	25
STORAGE BINS	14	EVE 400 COMPACT	25
Nugget Ice & Water	Page	EVE 650 COMPACT	25
MDT 5N 25	15	EVE 800 COMPACT	25
MDT 5N 40	15	EVE 1000 COMPACT	26
Flake Ice & Water	Page	EVE 1300 COMPACT	26
MDT 4F 12	15	EVE 1500 COMPACT	26
Ice & Water	Page	EVE 2400 COMPACT	26
HD 22	16	MAR 55	27
HD 30	16	MAR 75	27
SW12	16	MAR 105	27
SCW 14-B	16	MAR 125	27
Flake Ice	Page	MAR 205	28
AF80	17	MAR 305	28
AF100	17	MAR 71 SPLIT	28
AF200	17	MAR 101 SPLIT	28
AF20	18	MAR 121 SPLIT	29
AF30	18	MAR 201 SPLIT	29
MF22	19	MAR 301 SPLIT	29
MF30	19	STAND M	29
MF46	19	Water Filters	Page
MF56	20		30

Free standing - No water or waste connections - ideal for homes, boats, caravans or planes

ACM 25

Mechanical - Manual Water Fill

Air Cooled.

Injection moulded plastic. Standard: Medium cube.

Dimensions (mm) H 640 x W 380 x D 380

Production rate based on 24 hrs

Max. production/24hrs		Kg	10
		Cubes	500
21°C ambient/water 15°C		Kg	9
Bin capacity		Kg	3.5
Weight		Kg	29
Consumption	Water	Litres @15°C	10/15
	Electricity	kwh	4.5
Fuse rating		Amps	13
Voltage		230/50/1	

NEW
WHITE FINISH



CRUSHMAN 360

Converts two kilos of supercubes into crushed ice granules in twenty seconds!

Stainless steel. Fine, medium or coarse texture.

Dimensions (mm) H 490 x W 245 x D 430

Tray capacity		Kg	3.5
Weight		Kg	23
Fuse rating		Amps	5
Voltage		230/50/1	



BGS 10

Ice Bagger

Includes easy bagger, wicket of bags (250), tape sealer and one roll of tape.

Dimensions (mm) H 790 x W 360 x D 300



Cube Ice

6 Series Supercubers



*The all new 6 series -
Producing more ice from less energy -
The green solution*



ACM 46

Air Cooled (AS) Water Cooled (WS) Grade 304 Stainless Steel.

Standard: Medium cube.

Dimensions (mm) H 645 x W 386 x D 600

Max. production/24hrs	Kg	24	
	Cubes	1200	
21°C ambient/water 15°C	Kg	22	
Bin capacity	Kg	9	
Weight	Kg	35	
Consumption	Water	(AS) Litres @15°C	77
		(WS) Litres @15°C	400
	Electricity	kwh	8
Fuse rating	Amps	13	
Voltage		230/50/1	



ACM 56

Air Cooled (AS) Water Cooled (WS) Grade 304 Stainless Steel.

Standard: Medium cube.

Dimensions (mm) H 695 (legs + 135) x W 386 x D 600

Max. production/24hrs	Kg	31	
	Cubes	1550	
21°C ambient/water 15°C	Kg	29	
Bin capacity	Kg	12.5	
Weight	Kg	36	
Consumption	Water	(AS) Litres @15°C	89
		(WS) Litres @15°C	485
	Electricity	kwh	7.6
Fuse rating	Amps	13	
Voltage		230/50/1	



ACM 86 **36% More capacity than ACM 85**

Air Cooled (AS) Water Cooled (WS) Grade 304 Stainless Steel.

Standard: Medium cube. Option: Large.

Dimensions (mm) H 795 (legs + 120) x W 530 x D 600

Max. production/24hrs	Kg	38	
	Cubes	1900	
21°C ambient/water 15°C	Kg	35	
Bin capacity	Kg	19	
Weight	Kg	44	
Consumption	Water	(AS) Litres @15°C	144
		(WS) Litres @15°C	520
	Electricity	kwh	8.9
Fuse rating	Amps	13	
Voltage		230/50/1	



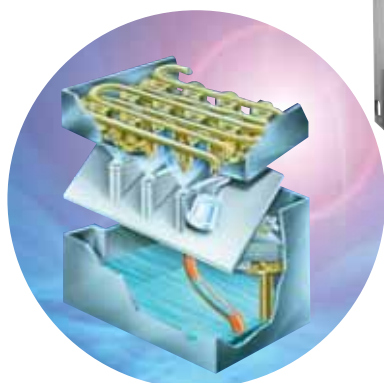
ACM 106 **28% More capacity than ACM 105**

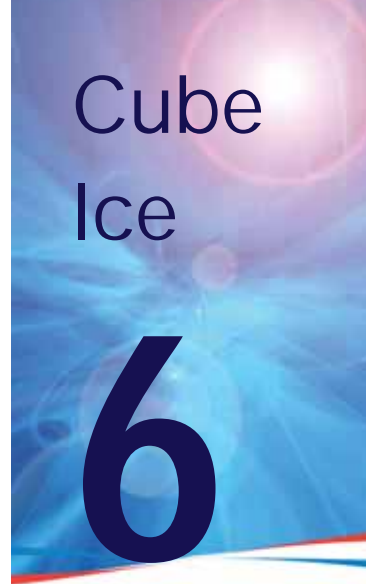
Air Cooled (AS) Water Cooled (WS) Grade 304 Stainless Steel.

Standard: Medium cube. Option: Large.

Dimensions (mm) H 850 (legs + 120) x W 530 x D 600

Max. production/24hrs	Kg	50	
	Cubes	2500	
21°C ambient/water 15°C	Kg	46	
Bin capacity	Kg	23	
Weight	Kg	52	
Consumption	Water	(AS) Litres @15°C	136
		(WS) Litres @15°C	550
	Electricity	kwh	10.3
Fuse rating	Amps	13	
Voltage		230/50/1	





Cube Ice

6

Series Supercubers

ACM 126 **39% More capacity than ACM 125**

Air Cooled (AS) Water Cooled (WS) Grade 304 Stainless Steel.

Standard: Medium cube. Option: Small, Large.

Dimensions (mm) H 930 (legs + 120) x W 680 x D 600

Max. production/24hrs		Kg	71
		Cubes	3550
21°C ambient/water 15°C		Kg	67
Bin capacity		Kg	39
Weight		Kg	75
Consumption	Water	(AS) Litres @15°C	190
		(WS) Litres @15°C	750
	Electricity	kwh	14
Fuse rating		Amps	13
Voltage			230/50/1



ACM 176 **71% More capacity than ACM 175**

Air Cooled (AS) Water Cooled (WS) Grade 304 Stainless Steel.

Standard: Medium cube. Option: Small, Large.

Dimensions (mm) H 1000 (legs + 120) x W 680 x D 600

Max. production/24hrs		Kg	84
		Cubes	4200
21°C ambient/water 15°C		Kg	78
Bin capacity		Kg	48
Weight		Kg	80
Consumption	Water	(AS) Litres @15°C	150
		(WS) Litres @15°C	1050
	Electricity	kwh	15
Fuse rating		Amps	13
Voltage			230/50/1



ACM 206

Air Cooled (AS) Water Cooled (WS) Grade 304 Stainless Steel.

Standard: Medium cube. Option: Small, Large.

Dimensions (mm) H 780 (legs + 80) x W 1250 x D 620

Max. production/24hrs		Kg	130
		Cubes	6500
21°C ambient/water 15°C		Kg	115
Bin capacity		Kg	50
Weight		Kg	82
Consumption	Water	(AS) Litres @15°C	288
		(WS) Litres @2°C	2496
	Electricity	kwh	17.3
Fuse rating		Amps	13
Voltage			230/50/1

NEW!



UNIQUE DESIGN FITS UNDER BARS AND COUNTERS

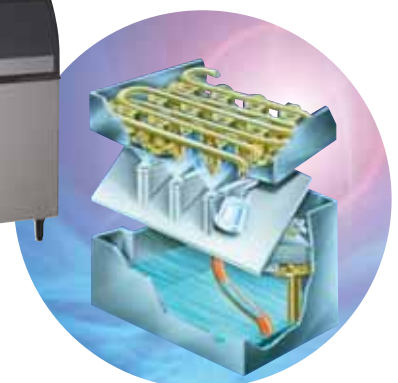
ACM 226

Air Cooled (AS) Water Cooled (WS) Grade 304 Stainless Steel.

Standard: Medium cube. Option: Small, Large.

Dimensions (mm) H 1006 (legs + 120) x W 1078 x D 715

Max. production/24hrs		Kg	145
		Cubes	7250
21°C ambient/water 15°C		Kg	135
Bin capacity		Kg	70
Weight		Kg	96
Consumption	Water	(AS) Litres @21°C	336
		(WS) Litres @21°C	3336
	Electricity	kwh	24.2
Fuse rating		Amps	13
Voltage			230/50/1



Cube Ice

Supercubers
Electronic
with Built in Pump



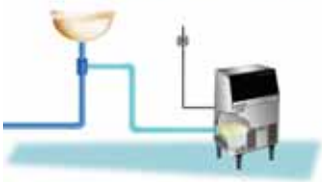
6 Series Easy-FIT RANGE

All the features of the new 6 series with the advantage to discharge waste up to 1.5 metres above base or up to 20 metres distant

- Fits almost anywhere
- No expensive plumbing costs
- Connects to standard drain
- Installed in minutes

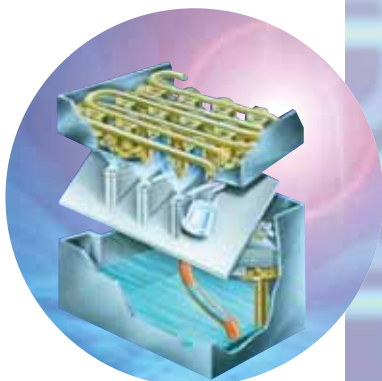


P.W.D. SYSTEM Easy-FIT technology



Model	Max Prod Kg/24hrs	Storage Kg
<u>EC46</u>	<u>24</u>	<u>9</u>
<u>EC56</u>	<u>31</u>	<u>12.5</u>
<u>EC86</u>	<u>38</u>	<u>19</u>
<u>EC106</u>	<u>50</u>	<u>23</u>
<u>EC126</u>	<u>71</u>	<u>39</u>
<u>EC176</u>	<u>86</u>	<u>48</u>
<u>EC206</u>	<u>130</u>	<u>50</u>
<u>EC226</u>	<u>145</u>	<u>70</u>

Dimensions and Technical Data same as ACM 6 Series



Cube Ice

MC Modular Supercubers

MC 16 Production unit only

Air Cooled (AS) Water Cooled (WS) Remote Condenser (ASR)
Grade 304 Stainless Steel. Standard: Medium cube. Option: Large/Small
Dimensions (mm) H 513 x W 1073 x D 534

Production rate based on 24 hrs

Max. production/24hrs		Kg	170
		Cubes	8500
21°C ambient/water 15°C		Kg	160
Bin capacity (B550S)		Kg	190
Weight		Kg	117
Consumption	Water	(AS) Litres @15°C	300
		(WS) Litres @15°C	2000
	Electricity	kwh	25.7
Fuse rating/Voltage		Amps	15A@400/50/3+N
			20A@230/50/1



MC 46 Production unit only

Air Cooled (AS) Water Cooled (WS) Remote Condenser (ASR)
Grade 304 Stainless Steel. Standard: Medium cube. option: Large/Small.
Dimensions (mm) H 874 x W 1073 x D 534

Production rate based on 24 hrs

Max. production/24hrs		Kg	300
		Cubes	15000
21°C ambient/water 15°C		Kg	280
Bin capacity (B550S)		Kg	190
Weight		Kg	185
Consumption	Water	(AS) Litres @15°C	660
		(WS) Litres @15°C	3460
	Electricity	kwh	50
Fuse rating/Voltage		Amps	15A@400/50/3+N
			20A@230/50/1

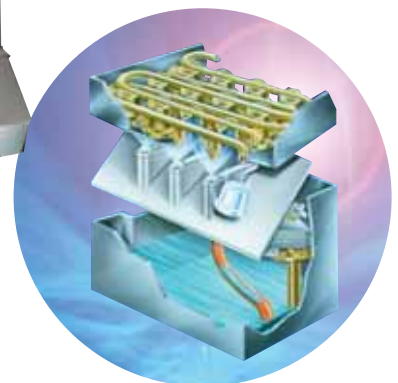


MC 1210 Production unit only

Air Cooled (AS) Water Cooled (WS)
Grade 304 Stainless Steel. Standard: Medium cube. option: Large/Small.
Dimensions (mm) H 810 x W 1677 x D 775

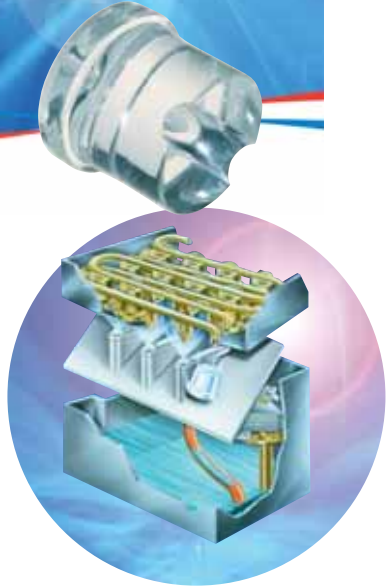
Production rate based on 24 hrs

Max. production/24hrs		Kg	660
		Cubes	33000
21°C ambient/water 15°C		Kg	570
Bin capacity (B120)		Kg	390
Weight		Kg	234
Consumption	Water	(AS) Litres @15°C	1240
		(WS) Litres @15°C	7240
	Electricity	kwh	106
Fuse rating		Amps	15A
Voltage			400/50/3+N



Cube Ice

Supercubers Dispenser



CD 40

Air Cooled (A) Water Cooled (W)

Grade 304 Stainless Steel or white enamel. Standard: Medium Supercube.

Dimensions (mm) H 1720 x W 380 x D 513

Production rate based on 24 hrs

Max. production/24hrs		Kg	34
		Cubes	1700
21°C ambient/water 15°C		Kg	31
Bin capacity		Kg	15
Weight		Kg	64
Consumption	Water	(A) Litres @15°C	144
		(W) Litres @15°C	528
	Electricity	kwh	10
Fuse rating		Amps	13
Voltage		230/50/1	

Cubelet Dispensers



TC180 (Ice & Water)

TC180 NW (Ice Only)

Air Cooled (AS)

Grade 304 Stainless Steel. Standard: Cubelet ice.

Dimensions (mm) H 874 x W 388 x D 663

Production rate based on 24 hrs

Max. production/24hrs		Kg	150
21°C ambient/water 15°C		Kg	120
Bin capacity		Kg	5
Weight		Kg	64
Consumption	Electricity	kwh	13
Fuse rating		Amps	13
Voltage		230/50/1	



TC180 PB (Ice & Water)

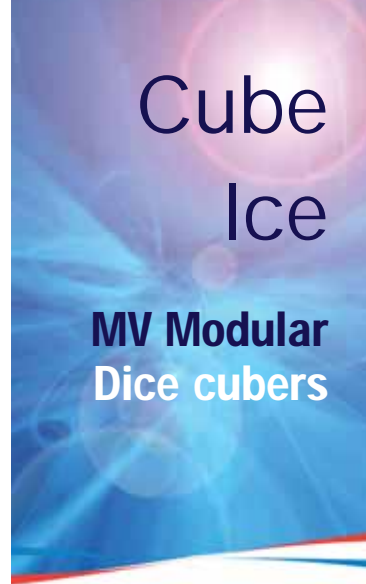
Push Button Air Cooled (PB AS)

Grade 304 Stainless Steel. Standard: Cubelet ice.

Dimensions (mm) H 874 x W 388 x D 663

Production rate based on 24 hrs

Max. production/24hrs		Kg	150
21°C ambient/water 15°C		Kg	120
Bin capacity		Kg	5
Weight		Kg	64
Consumption	Electricity	kwh	13
Fuse rating		Amps	13
Voltage		230/50/1	



Cube Ice

MV Modular Dice cubers

MV 300 Production unit only

Air Cooled (AS) Water Cooled (WS)

Grade 304 Stainless Steel. Standard: Full Dice. Option: Half Dice.

Dimensions (mm) H 575 x W 560 x D 620

Production rate based on 24 hrs

Max. production/24hrs		Kg	140
		Cubes	10750
21°C ambient/water 15°C		Kg	120
Bin capacity (B193)		Kg	100
Weight		Kg	55
Consumption	Water	(AS) Litres @15°C	240
		(WS) Litres @15°C	2240
	Electricity	kwh	19
Fuse rating		Amps	13A
Voltage			230/50/1



MV 450 Production unit only

Air Cooled (AS) Water Cooled (WS) Remote Condenser (ASR)

Grade 304 Stainless Steel. Standard: Full Dice. Option: Half Dice.

Dimensions (mm) H 575 x W 760 x D 620

Production rate based on 24 hrs

Max. production/24hrs		Kg	215
		Cubes	15350
21°C ambient/water 15°C		Kg	190
Bin capacity (B393)		Kg	150
	(B550+KBT1MV)	Kg	190
Weight		Kg	70
Consumption	Water	(AS) Litres @15°C	384
		(WS) Litres @15°C	2400
	Electricity	kwh	24
Fuse rating		Amps	15A
Voltage			230/50/1



MV 600 Production unit only

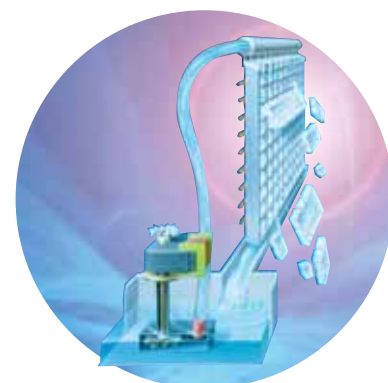
Air Cooled (AS) Water Cooled (WS) Remote Condenser (ASR)

Grade 304 Stainless Steel. Standard: Full Dice. Option: Half Dice.

Dimensions (mm) H 575 x W 760 x D 620

Production rate based on 24 hrs

Max. production/24hrs		Kg	320
		Cubes	24500
21°C ambient/water 15°C		Kg	275
Bin capacity (B393)		Kg	150
	(B550+KBT1MV)	Kg	190
Weight		Kg	73
Consumption	Water	(AS) Litres @15°C	500
		(WS) Litres @15°C	3360
	Electricity	kwh	39
Fuse rating		Amps	20A
Voltage			230/50/1



Cube Ice

MV Modular Dice cubers



MV 800

Production unit only

Air Cooled (AS) Water Cooled (WS) Remote Condenser (ASR)

Grade 304 Stainless Steel. Standard: Full Dice. Option: Half Dice.

Dimensions (mm) H 725 x W 760 x D 620

Production rate based on 24 hrs

Max. production/24hrs	Kg	405
	Cubes	31150
21°C ambient/water 15°C	Kg	370
Bin capacity (BH550)	Kg	185
(B550+KBT1MV)	Kg	190
Weight	Kg	94
Consumption	Water	(AS) Litres @15°C 552
		(WS) Litres @15°C 5040
	Electricity	kwh 55.2
Fuse rating/Voltage	Amps	20A@230/50/1 10A@400/50/3+N



MV 1000

Production unit only

Air Cooled (AS) Water Cooled (WS)

Grade 304 Stainless Steel. Standard: Full Dice. Option: Half Dice.

Dimensions (mm) H 800 x W 760 x D 620

Production rate based on 24 hrs

Max. production/24hrs	Kg	485
	Cubes	40400
21°C ambient/water 15°C	Kg	432
Bin capacity (BH550)	Kg	185
(B550+KBT1MV)	Kg	190
Weight	Kg	104
Consumption	Water	(AS) Litres @15°C 625
		(WS) Litres @15°C 4680
	Electricity	kwh 60
Fuse rating/Voltage	Amps	20A@230/50/1 10A@400/50/3+N



Cube Ice

Modular Contour cubers



CM 450 SL

Air Cooled (AS) Water Cooled (WS)

Grade 304 Stainless Steel.

Dimensions (mm) H 696 x W 560 x D 600

Production rate based on 24 hrs

Max. production/24hrs	Kg	210
	Cubes	19000
21°C ambient/water 15°C	Kg	190
Bin capacity (B193)	Kg	100
(BH360)	Kg	180
Weight	Kg	85
Consumption	Water	(AS) Litres @15°C 384
		(WS) Litres @15°C 3650
	Electricity	kwh 30
Fuse rating	Amps	20
Voltage		230/50/1



CME 456

Air Cooled (AS) Water Cooled (WS)

Grade 304 Stainless Steel.

Dimensions (mm) H 711 x W 560 x D 610

Production rate based on 24 hrs

Max. production/24hrs	Kg	195
	Cubes	17500
21°C ambient/water 15°C	Kg	190
Bin capacity (B193)	Kg	100
(BH360)	Kg	180
Weight	Kg	87
Consumption	Water	(AS) Litres @15°C 240
		(WS) Litres @15°C 2520
	Electricity	kwh 25
Fuse rating	Amps	20
Voltage		230/50/1



CME 506

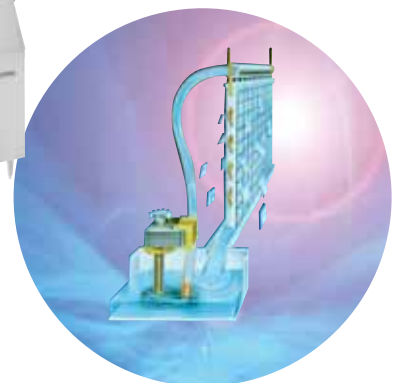
Air Cooled (AS) Water Cooled (WS)

Grade 304 Stainless Steel.

Dimensions (mm) H 686 x W 762 x D 610

Production rate based on 24 hrs

Max. production/24hrs	Kg	204
	Cubes	18900
21°C ambient/water 15°C	Kg	193
Bin capacity (BH550)	Kg	185
Weight	Kg	93
Consumption	Water	(AS) Litres @15°C 224
		(WS) Litres @15°C 3472
	Electricity	kwh 24
Fuse rating	Amps	20
Voltage		230/50/1



Cube Ice

Modular Contour cubers



CME 656

Air Cooled (AS) Water Cooled (WS)

Grade 304 Stainless Steel.

Dimensions (mm) H 686 x W 762 x D 610

Production rate based on 24 hrs

Max. production/24hrs		Kg	320
		Cubes	29100
21°C ambient/water 15°C		Kg	300
Bin capacity (BH550)		Kg	185
Weight		Kg	100
Consumption	Water	(AS) Litres @15°C	336
		(WS) Litres @15°C	3576
	Electricity	kwh	30
Fuse rating		Amps	20
Voltage			230/50/1



CME 1356

Air Cooled (AS) Water Cooled (WS) Remote Condenser (ASR)

Grade 304 Stainless Steel.

Dimensions (mm) H 711 x W 1220 x D 610

Production rate based on 24 hrs

Max. production/24hrs		Kg	590
		Cubes	53600
21°C ambient/water 15°C		Kg	530
Bin capacity (BH900)		Kg	340
Weight		Kg	148
Consumption	Water	(AS) Litres @15°C	720
		(WS) Litres @15°C	7920
	Electricity	kwh	58
Fuse rating		Amps	30
Voltage			230/50/1



CME 1656

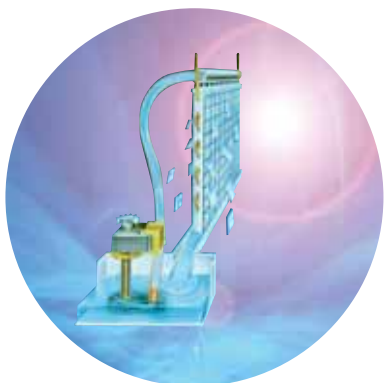
Air Cooled (AS) Water Cooled (WS)

Grade 304 Stainless Steel.

Dimensions (mm) H 711 x W 1220 x D 610

Production rate based on 24 hrs

Max. production/24hrs		Kg	654
		Cubes	59000
21°C ambient/water 15°C		Kg	590
Bin capacity (BH900)		Kg	340
Weight		Kg	155
Consumption	Water	(AS) Litres @15°C	792
		(WS) Litres @15°C	9120
	Electricity	kwh	63.5
Fuse rating		Amps	30
Voltage			230/50/1





Storage Bins

Cube

B120 For machines: MC 1210
 Dimensions (mm) H 900 x W 1680 x D 1070 Weight Kg 127

Capacity	Cubes	390 Kg
----------	-------	--------

B193 For machines: MV 300 - CM 450SL - CME 456
 Dimensions (mm) H 1095 x W 565 x D 825 Weight 35 Kg

Capacity	Cubes	100 Kg
----------	-------	--------



B393 For machines: MV 450 - MV 600 - NME 654
 Dimensions (mm) H 1095 x W 765 x D 825 Weight 41 Kg

Capacity	Cubes	150 Kg
----------	-------	--------



B550 For machines: MC 16 - MC 46 - MV 450 - MV 600 -
 MV 800 - NME 654
 Dimensions (mm) H 1012 x W 1073 x D 690 Weight 88 Kg

Capacity	Cubes	190 Kg
----------	-------	--------



B1025 For machines: MV 1000 - CME 1356 - CME 1656
 Dimensions (mm) H 1270 x W 1320 x D 857 Weight 105Kg

Capacity	Cubes	460 Kg
----------	-------	--------



BH550 For machines: MV 800 - MV 1000 - CME 506 - CME 656
 Dimensions (mm) H 1118 x W 762 x D 800 Weight 55 Kg

Capacity	Cubes	230 Kg
----------	-------	--------

BH900 For machines: CME 1356 - CME 1656
 Dimensions (mm) H 1270 x W 1224 x D 857 Weight 83Kg

Capacity	Cubes	340 Kg
----------	-------	--------

BH360 For machines: CME 450 SL - CME 456
 Dimensions (mm) H 1270 x W 560 x D 800 Weight 49Kg

Capacity	Cubes	180 Kg
----------	-------	--------



Capacities are calculated on volume and do not reflect voids that can occur due to pyramiding of ice.

Nugget Ice & Water



MDT 5N 25

Nugget Ice & water

Air Cooled (AS) Water Cooled (WS)

Stand DMS 21B

Grade 304 Stainless Steel. Standard: Nugget ice.

Dimensions (mm) H 1104 x W 680 x D 571

Production rate based on 24 hrs

Max. production/24hrs	Kg	237
21°C ambient/water 15°C	Kg	220
Bin capacity	Kg	12
Weight	Kg	104
Consumption	Electricity	kwh
Fuse rating	Amps	15
Voltage		230/50/1



MDT 5N 40

Nugget Ice & water

Air Cooled (AS) Water Cooled (WS)

Stand DMS 21B

Grade 304 Stainless Steel. Standard: Nugget ice.

Dimensions (mm) H 1232 x W 680 x D 571

Production rate based on 24 hrs

Max. production/24hrs	Kg	237
21°C ambient/water 15°C	Kg	120
Bin capacity	Kg	18
Weight	Kg	104
Consumption	Electricity	kwh
Fuse rating	Amps	15
Voltage		230/50/1



MDT 4F 12

Flake Ice & water

Air Cooled Only

Grade 304 Stainless Steel. Standard: Flake Ice

Dimensions (mm) H 870 x W 355 x D 606

Production rate based on 24 hrs

Max. production/24hrs	Kg	205
21°C ambient/water 15°C	Kg	192
Bin capacity	Kg	5.4
Weight	Kg	61
Consumption	Electricity	kwh
Fuse rating	Amps	15
Voltage		230/50/1

Flake Ice & Water

HD 22

Ice dispenser only

Grade 304 Stainless Steel. Standard: Contour ice. For CME 506 - 656

Dimensions (mm) H 1353 x W 559 x D 851

Bin capacity	Kg	59
Weight	Kg	81
Fuse rating	Amps	13
Voltage	230/50/1	



HD 30

Ice dispenser only

Dimensions (mm) H 1353 x W 838 x D 851. For CME 506 - 656

Bin Capacity	Kg	81
Weight	Kg	89
Fuse rating	Amps	13
Voltage	230/50/1	



SW 12

Exclusive projector design. Water stream activated by push button, automatically regulated. All stainless steel, wall mounted, compact cabinet, for children/handicapped ease-of-reach height installation.

Dimensions (mm) H 584 x W 460 x D 362

Max. production/hr	Litres	50
Cooled to	°C	10
Weight	Kg	20
Fuse rating	Amps	13
Voltage	230/50-60/1	



SCW 14 - B

Exclusive projector design. Two independent faucets (one with foot pedal, second hand activated) with automatic stream regulator. Free standing.

Dimensions (mm) H 1040 (1310 with glass filler) x W 400 x D 330

Max. production/hr	Litres	50
Cooled to	°C	10
Weight	Kg	33
Fuse rating	Amps	13
Voltage	230/50-60/1	



Flake Ice

Self-contained



AF 80

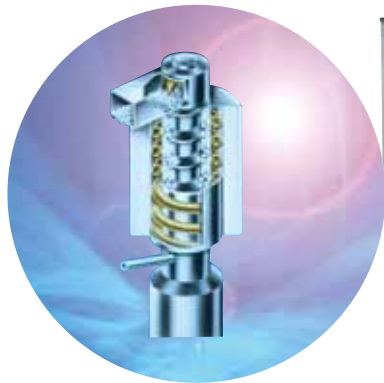
Air Cooled (AS) Water Cooled (WS)

Grade 304 Stainless Steel.

Dimensions (mm) H 813 (legs + 120) x W 535 x D 626

Production rate based on 24 hrs

Max. production/24hrs		Kg	70
21°C ambient/water 15°C		Kg	64
Bin capacity		Kg	25
Weight		Kg	51
Consumption	Water	(AS) Litres @15°C	64
		(WS) Litres @15°C	384
	Electricity	kwh	7.5
Fuse rating		Amps	13
Voltage			230/50/1



AF 100

Air Cooled (AS)

Grade 304 Stainless Steel.

Dimensions (mm) H 1006 (legs + 120) x W 592 x D 622

Production rate based on 24 hrs

Max. production/24hrs		Kg	85
21°C ambient/water 15°C		Kg	75
Bin capacity		Kg	32
Weight		Kg	63
Consumption	Water	Litres @15°C	75
			9
	Electricity	kwh	9
Fuse rating		Amps	13
Voltage			230/50/1



AF 200

Air Cooled (AS) Water Cooled (WS)

Grade 304 Stainless Steel.

Dimensions (mm) H 1006 (legs + 120) x W 592 x D 622

Production rate based on 24 hrs

Max. production/24hrs		Kg	120
21°C ambient/water 15°C		Kg	110
Bin capacity		Kg	32
Weight		Kg	65
Consumption	Water	(AS) Litres @15°C	110
		(WS) Litres @15°C	792
	Electricity	kwh	12
Fuse rating		Amps	13
Voltage			230/50/1

Flake Ice

Self-contained

AF 20

Air Cooled (AS) Water Cooled (WS)

Grade 304 Stainless Steel.

Dimensions (mm) H 1006 (legs + 120) x W 977 x D 622

Production rate based on 24 hrs

Max. production/24hrs		Kg	120
21°C ambient/water 15°C		Kg	110
Bin capacity		Kg	70
Weight		Kg	88
Consumption	Water	(AS) Litres @15°C	110
		(WS) Litres @15°C	792
	Electricity	kwh	12
Fuse rating		Amps	13
Voltage			230/50/1



AF 30

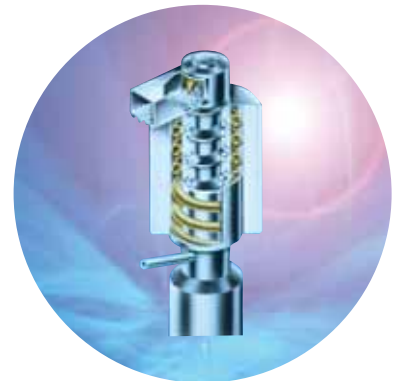
Air Cooled (AS) Water Cooled (WS)

Grade 304 Stainless Steel.

Dimensions (mm) H 1006 (legs + 120) x W 977 x D 622

Production rate based on 24 hrs

Max. production/24hrs		Kg	200
21°C ambient/water 15°C		Kg	182
Bin capacity		Kg	70
Weight		Kg	82
Consumption	Water	(AS) Litres @15°C	182
		(WS) Litres @15°C	2472
	Electricity	kwh	17
Fuse rating		Amps	13
Voltage			230/50/1



Flake Ice

Modular



MF 22

Production unit only

Air Cooled (AS) Water Cooled (WS)

Grade 304 Stainless Steel.

Dimensions (mm) H 542 x W 560 x D 533

Production rate based on 24 hrs

Max. production/24hrs		Kg	120
21°C ambient/water 15°C		Kg	110
Bin capacity (B193)		Kg	86
	(B393 + KBT 103)	Kg	130
Weight		Kg	45
Consumption	Water	(AS) Litres @15°C	110
		(WS) Litres @15°C	600
	Electricity	kwh	11
Fuse rating		Amps	13
Voltage			230/50/1



MF 30

Production unit only

Air Cooled (AS) Water Cooled (WS)

Grade 304 Stainless Steel.

Dimensions (mm) H 525 (legs + 17) x W 560 x D 533

Production rate based on 24 hrs

Max. production/24hrs		Kg	200
21°C ambient/water 15°C		Kg	185
Bin capacity (B193)		Kg	86
	(B393 + KBT 103)	Kg	130
Weight		Kg	49
Consumption	Water	(AS) Litres @15°C	185
		(WS) Litres @15°C	2280
	Electricity	kwh	17
Fuse rating		Amps	13
Voltage			230/50/1

NEW



MF 46

Production unit only

Air Cooled (AS) Water Cooled (WS)

Grade 304 Stainless Steel.

Dimensions (mm) H 690 (legs + 15) x W 535 x D 660

Production rate based on 24 hrs

Max. production/24hrs		Kg	320
21°C ambient/water 15°C		Kg	300
Bin capacity (B550 + KBT 1)		Kg	160
	(RB 901 + RB 902)	Kg	130
	(B1025)	Kg	400
Weight		Kg	79
Consumption	Water	(AS) Litres @15°C	300
		(WS) Litres @15°C	2760
	Electricity	kwh	26
Fuse rating		Amps	15
Voltage			230/50/1

Flake Ice Modular

MF 56

Production unit only

Air Cooled (AS) Water Cooled (WS) Air Cooled Remote Condenser (ASR)

Grade 304 Stainless Steel.

Dimensions (mm) H 830 (legs + 15) x W 535 x D 660

Production rate based on 24 hrs

Max. production/24hrs		Kg	600
21°C ambient/water 15°C		Kg	540
Bin capacity (B550 + KBT 1)		Kg	160
	(RB 901 + RB 902)	Kg	130
	(B1025)	Kg	400
Weight		Kg	95
Consumption	Water	(AS) Litres @15°C	540
		(WS) Litres @15°C	4440
	Electricity	kwh	45
Fuse rating		Amps	15
Voltage			230/50/1 or 400/50/3+N

NEW



MFE 61

Production unit only

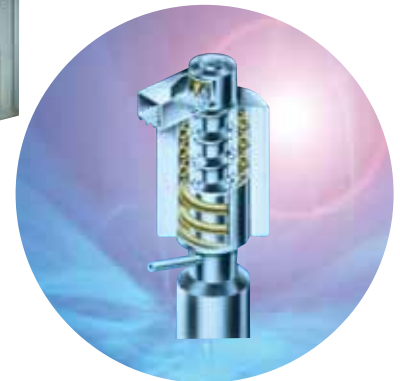
Air Cooled (AS) Water Cooled (WS) Air Cooled Remote Condenser (ASR)

Grade 304 Stainless Steel.

Dimensions (mm) H 850 x W 1065 x D 698

Production rate based on 24 hrs

Max. production/24hrs		Kg	1150
21°C ambient/water 15°C		Kg	1020
Bin capacity (B1350)		Kg	520
	(B2250)	Kg	850
	(B3200)	Kg	1500
Weight		Kg	179
Consumption	Water	(AS) Litres @15°C	1020
		(WS) Litres @15°C	9120
	Electricity	kwh	80
Fuse rating		Amps	16
Voltage			400/50/3+N



MF 83

Production unit only

Air Cooled (AS) Water Cooled (WS) Air Cooled Remote Condenser (ASR)

Grade 304 Stainless Steel.

Dimensions (mm) H 1140 (Legs +115) x W 1080 x D 780 (Ice Chute +185)

Production rate based on 24 hrs

Max. production/24hrs		Kg	2500
21°C ambient/water 15°C		Kg	2250
Bin capacity (B1350)		Kg	520
	(B2250)	Kg	850
	(B3200)	Kg	1500
Weight		Kg	390
Consumption	Water	(AS) Litres @15°C	2250
		(WS) Litres @15°C	41928
	Electricity	kwh	143.5
Fuse rating		Amps	25
Voltage			400/50/3+N



Flake Ice

Modular



FME 804

Production unit only

Air Cooled (AS) Water Cooled (WS)

Grade 304 Stainless Steel.

Dimensions (mm) H 686 x W 533 x D 610

Max. production/24hrs	Kg	330
21°C ambient/water 15°C	Kg	310
Bin capacity (B550 + KBT 1)	Kg	160
(B1025)	Kg	400
Weight	Kg	86
Consumption	Water	(AS) Litres @15°C 310
		(WS) Litres @15°C 3352
	Electricity	kwh 24
Fuse rating	Amps	20
Voltage		230/50/1



FME 1204

Production unit only

Air Cooled (AS) Water Cooled (WS)

Grade 304 Stainless Steel.

Dimensions (mm) H 686 x W 533 x D 610

Max. production/24hrs	Kg	500
21°C ambient/water 15°C	Kg	478
Bin capacity (B550 + KBT 1)	Kg	160
(B1025)	Kg	400
Weight	Kg	91
Consumption	Water	(AS) Litres @15°C 478
		(WS) Litres @15°C 3440
	Electricity	kwh 23
Fuse rating	Amps	16
Voltage		230/50/1



NEW



MF 58 - 68 Split

Evaporator section only

Grade 304 Stainless Steel.

Dimensions (mm) H 850 x W 660 x D 535

Max. production/24hrs MF 52/MF 62	Kg	600/1150
Weight MF 51/MF 61	Kg	63/99
Voltage		230/50/1
Cooling requirement MF 51/MF 61	W	2325/4650
Evaporating temperature MF 51/MF 61	°C	-16/-16

NEW

MF 83 Split

Evaporator section only

Air Cooled (AS) Water Cooled (WS) Air Cooled Remote Condenser (ASR)

Grade 304 Stainless Steel.

Dimensions (mm) H 1140 (Legs +115) x W 540 x D 780 (Ice Chute +185)

Max. production/24hrs	Kg	2500
21°C ambient/water 15°C	Kg	2250
Bin capacity (B1350)	Kg	520
(B2250)	Kg	850
(B3200)	Kg	1500
Weight	Kg	390
Consumption	Water	(AS) Litres @15°C 2250
		(WS) Litres @15°C 41928
	Electricity	kwh 143.5
Fuse rating	Amps	25
Voltage		400/50/3+N

Storage Bins

Flake

B193 For machines: MF 22 - MF 30
 Dimensions (mm) H 1095 x W 565 x D 825 Weight 35 Kg

Capacity	Flake	86 Kg
----------	-------	-------



B393 For machines: MF 30 - MF 46 - NME 654 - FME 804
 Dimensions (mm) H 1095 x W 765 x D 825 Weight 41 Kg

Capacity	Flake	130 kg
----------	-------	--------



B550 For machines: MF 46 - MF 56
 Dimensions (mm) H 1012 x W 1073 x D 690 Weight 88 Kg

Capacity	Flake	160 Kg
----------	-------	--------



B1025 For machines: MF 46 - MF 56 - MF 58 - NME 654
 Dimensions (mm) H 1270 x W 1320 x D 857 Weight 105 Kg

Capacity	Flake	400 Kg
----------	-------	--------



BH1100S For machines: MFE 61 - FME 804 - FME 1204
 Dimensions (mm) H 1422 x W 1210 x D 864 Weight 127 Kg

Capacity	Flake	499 Kg
----------	-------	--------



BH1300S For machines: MF 56/58/61/68 - FME 804 - FME 1204
 Dimensions (mm) H 1422 x W 1524 x D 864 Weight 140Kg

Capacity	Flake	635 Kg
----------	-------	--------



BH1600S For machines: MF 56/58/61/68 - FME 804 FME 1204
 Dimensions (mm) H 1728 x W 1524 x D 864 Weight 168Kg

Capacity	Flake	796 Kg
----------	-------	--------

B3200 For machines: MFE 61 - MF 83 - MF 83 Split - MAR 205
 Dimensions (mm) H 1765 x W 1829 x D 1423 Weight 400Kg

Capacity	Flake	1230 Kg
----------	-------	---------



B4600 For machines: MFE 61 - MF 83 - MF 83 Split - MAR 205 - MAR 305
 Dimensions (mm) H 2413 x W 1830 x D 1448 Weight 590Kg

Capacity	Flake	1770 Kg
----------	-------	---------

RB901 Frame for use with machines: MF 46 - MF 56 - MF 58

RB902 Non-insulated bin for use with frame RB901
 Dimensions (mm) H 950 x W 600 x D 100 Weight 66Kg

Capacity	Flake	130 Kg
----------	-------	--------



Capacities are calculated on volume and do not reflect voids that can occur due to pyramiding of ice.

Scale Ice

Split Production units



EVE 201 Split Unit

Dimensions (mm) H 1430 x W 1150 x D 1180

Production rate based on 24 hrs dependent on operating conditions

Max. production/24hrs		Kg	1400-1900
Weight		Kg	285
Cooling	Fresh Water	10 Kw evaporating @ -28°C	
	Salt Water	10 Kw evaporating @ -32°C	
Refrigerant	R404A/R22		
Refrigerant control	Expansion valve		
Voltage	400/50/3+N		

EVE 301 Split Unit

Dimensions (mm) H 1630 x W 1150 x D 1180

Production rate based on 24 hrs dependent on operating conditions

Max. production/24hrs		Kg	2100-2900
Weight		Kg	305
Cooling	Fresh Water	14.6 Kw evaporating @ -28°C	
	Salt Water	14.6 Kw evaporating @ -32°C	
Refrigerant	R404A/R22		
Refrigerant control	Expansion valve		
Voltage	400/50/3+N		

EVE 401 Split Unit

Dimensions (mm) H 1860 x W 1150 x D 1180

Production rate based on 24 hrs dependent on operating conditions

Max. production/24hrs		Kg	3400-4000
Weight		Kg	365
Cooling	Fresh Water	19.8 Kw evaporating @ -28°C	
	Salt Water	19.8 Kw evaporating @ -32°C	
Refrigerant	R404A/R22		
Refrigerant control	Expansion valve		
Voltage	400/50/3+N		

EVE 651 Split Unit

Dimensions (mm) H 1830 x W 1440 x D 1550

Production rate based on 24 hrs dependent on operating conditions

Max. production/24hrs		Kg	5000-6200
Weight		Kg	650
Cooling	Fresh Water	33.5 Kw evaporating @ -28°C	
	Salt Water	33.5 Kw evaporating @ -32°C	
Refrigerant	R404A/R22		
Refrigerant control	Expansion valve		
Voltage	400/50/3+N		

EVE 801 Split Unit

Dimensions (mm) H 2050 x W 1440 x D 1550

Production rate based on 24 hrs dependent on operating conditions

Max. production/24hrs		Kg	6500-7700
Weight		Kg	880
Cooling	Fresh Water	44.2 Kw evaporating @ -28°C	
	Salt Water	44.2 Kw evaporating @ -32°C	
Refrigerant	R404A/R22		
Refrigerant control	Expansion valve		
Voltage	400/50/3+N		



EVE 1001 Split Unit

Dimensions (mm) H 2080 x W 1800 x D 1800

Production rate based on 24 hrs dependent on operating conditions

Max. production/24hrs		Kg	8500-10000
Weight		Kg	1030
Cooling	Fresh Water	55.9 Kw evaporating @ -28°C	
	Salt Water	55.9 Kw evaporating @ -32°C	
Refrigerant	R404A/R22/R717		
Refrigerant control	Level control		
Voltage	400/50/3+N		



EVE 1301 Split Unit

Dimensions (mm) H 2380 x W 1800 x D 1800

Production rate based on 24 hrs dependent on operating conditions

Max. production/24hrs		Kg	10000-12500
Weight		Kg	1230
Cooling	Fresh Water	67.5 Kw evaporating @ -28°C	
	Salt Water	67.5 Kw evaporating @ -32°C	
Refrigerant	R404A/R22/R717		
Refrigerant control	Level control		
Voltage	400/50/3+N		

EVE 1501 Split Unit

Dimensions (mm) H 2580 x W 1800 x D 1800

Production rate based on 24 hrs dependent on operating conditions

Max. production/24hrs		Kg	13500-15000
Weight		Kg	1350
Cooling	Fresh Water	89.6 Kw evaporating @ -28°C	
	Salt Water	89.6 Kw evaporating @ -32°C	
Refrigerant	R404A/R22/R717		
Refrigerant control	Level control		
Voltage	400/50/3+N		

EVE 2401 Split Unit

Dimensions (mm) H 2730 x W 2250 x D 2105

Production rate based on 24 hrs dependent on operating conditions

Max. production/24hrs		Kg	20500-23000
Weight		Kg	2400
Cooling	Fresh Water	133.8 Kw evaporating @ -28°C	
	Salt Water	133.8 Kw evaporating @ -32°C	
Refrigerant	R404A/R22/R717		
Refrigerant control	Level control		
Voltage	400/50/3+N		

Scale Ice

Compact Production units



EVE 200 Compact Unit

Dimensions (mm) H 1150 x W 2000 x D 1600

Production rate based on 24 hrs

Max. production/24hrs	Kg	1900
Weight (water cooled on board version)	Kg	780 (900)
Refrigerant	R404A/R22	
Voltage	400/50/3+N	

EVE 300 Compact Unit

Dimensions (mm) H 1300 x W 2000 x D 1600

Production rate based on 24 hrs

Max. production/24hrs	Kg	2900
Weight (water cooled on board version)	Kg	800 (980)
Refrigerant	R404A/R22	
Voltage	400/50/3+N	

EVE 400 Compact Unit

Dimensions (mm) H 1550 x W 2000 x D 1600

Production rate based on 24 hrs

Max. production/24hrs	Kg	3900
Weight (water cooled on board version)	Kg	1150 (1300)
Refrigerant	R404A/R22	
Voltage	400/50/3+N	

EVE 650 Compact Unit

Dimensions (mm) H 1700 x W 2600 x D 1800

Production rate based on 24 hrs

Max. production/24hrs	Kg	6200
Weight (water cooled on board version)	Kg	2000 (2150)
Refrigerant	R404A/R22	
Voltage	400/50/3+N	

EVE 800 Compact Unit

Dimensions (mm) H 1900 x W 2600 x D 1800

Production rate based on 24 hrs

Max. production/24hrs	Kg	7650
Weight (water cooled on board version)	Kg	2200 (2650)
Refrigerant	R404A/R22/R717	
Voltage	400/50/3+N	



EVE 1000 Compact Unit

Dimensions (mm) H 2250 x W 4600 x D 1950

Production rate based on 24 hrs

Max. production/24hrs	Kg	9800
Weight (water cooled on board version)	Kg	2950 (3500)
Refrigerant	R404A/R22/R717	
Voltage	400/50/3+N	



EVE 1300 Compact Unit

Dimensions (mm) H 2250 x W 4600 x D 1950

Production rate based on 24 hrs

Max. production/24hrs	Kg	12500
Weight (water cooled on board version)	Kg	3750 (3950)
Refrigerant	R404A/R22/R717	
Voltage	400/50/3+N	

EVE 1500 Compact Unit (On board version not available)

Dimensions (mm) H 2250 x W 4600 x D 1950

Production rate based on 24 hrs

Max. production/24hrs	Kg	15000
Weight	Kg	4300
Refrigerant	R404A/R22/R717	
Voltage	400/50/3+N	

*(*Water cooled dimensions & weight on request)*

EVE 2400 Compact Unit (On board version not available)

Dimensions and weight on request

Production rate based on 24 hrs

Max. production/24hrs	Kg	23000
Refrigerant	R404A/R22/R717	
Voltage	400/50/3+N	

Scale Ice

MAR Production units



MAR 55

Air Cooled (AS) Water Cooled (WS) Grade 304 Stainless Steel.

Dimensions (mm) H 1135 x W 910 x D 811

Production rate based on 24 hrs

Max. production/24hrs	Thin ice	Kg	426
	Thick ice	Kg	380
Weight		Kg	177
Consumption	Electricity	kwh	65
Fuse rating		Amps	16
Voltage		400/50/3N	



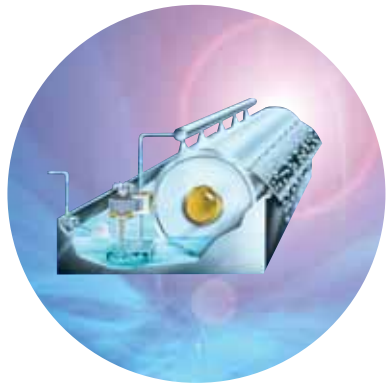
MAR 75

Air Cooled (AS) Water Cooled (WS) Grade 304 Stainless Steel.

Dimensions (mm) H 1135 x W 910 x D 811

Production rate based on 24 hrs

Max. production/24hrs	Thin ice	Kg	570
	Thick ice	Kg	510
Weight		Kg	187
Consumption	Electricity	kwh	70
Fuse rating		Amps	16
Voltage		400/50/3N	



MAR 105

Air Cooled (AS) Water Cooled (WS) Grade 304 Stainless Steel.

Dimensions (mm) H 1135 x W 910 x D 811

Production rate based on 24 hrs

Max. production/24hrs	Thin ice	Kg	785
	Thick ice	Kg	700
Weight		Kg	204
Consumption	Electricity	kwh	90
Fuse rating		Amps	16
Voltage		400/50/3N	



MAR 125

Air Cooled (AS) Water Cooled (WS) Grade 304 Stainless Steel.

Dimensions (mm) H 1135 x W 910 x D 810

Production rate based on 24 hrs

Max. production/24hrs	Thick ice	Kg	1000
Weight		Kg	209
Consumption	Electricity	kwh	108
Fuse rating		Amps	16
Voltage		400/50/3N	

Scale Ice

MAR Production units



MAR 205

Air Cooled (AS) Water Cooled (WS) Grade 304 Stainless Steel.

Dimensions (mm) H 1135 x W 1330 x D 851

Production rate based on 24 hrs

Max. production/24hrs	Thin ice	Kg	1700
	Thick ice	Kg	1580
Weight		Kg	387
Consumption	Electricity	kwh	170
Fuse rating		Amps	25
Voltage		400/50/3N	



MAR 305

Water Cooled (WS) Remote Air Cooled (ASR)

Grade 304 Stainless Steel.

Dimensions (mm) H 1135 x W 1330 x D 851

Production rate based on 24 hrs

Max. production/24hrs	Thin ice	Kg	2450
	Thick ice	Kg	2200
Weight		Kg	390
Consumption	Electricity	kwh	220
Fuse rating		Amps	32
Voltage		400/50/3N	



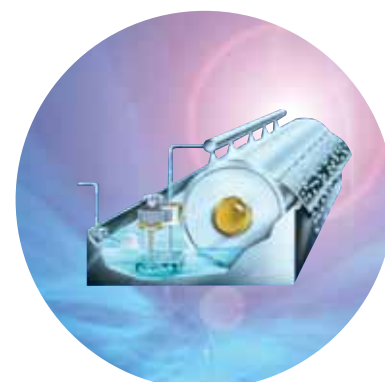
MAR 71 Split

Grade 304 Stainless Steel.

Dimensions (mm) H 525 x W 910 x D 811

Production rate based on 24 hrs

Max. production/24hrs	Thin ice	Kg	570
	Thick ice	Kg	510
Weight		Kg	114
Cooling requirement		W	3700
Fuse rating		Amps	10
Voltage		400/50/3N	
Evaporating temperature		°C	-18



MAR 101 Split

Grade 304 Stainless Steel.

Dimensions (mm) H 525 x W 910 x D 811

Production rate based on 24 hrs

Max. production/24hrs	Thin ice	Kg	785
	Thick ice	Kg	700
Weight		Kg	114
Cooling requirement		W	5600
Fuse rating		Amps	10
Voltage		400/50/3N	
Evaporating temperature		°C	-24



Scale Ice

MAR SPLIT Production units



MAR 121 Split

On-board Specification

Grade 316 Stainless Steel.

Dimensions (mm) H 525 x W 910 x D 811

Production rate based on 24 hrs

Max. production/24hrs	Thick ice	Kg	1000
	Sea Water	Kg	850
Weight		Kg	114
Cooling requirement		W	7000
Fuse rating		Amps	10
Voltage		400/50/3N	
Evaporating temperature		°C	-24



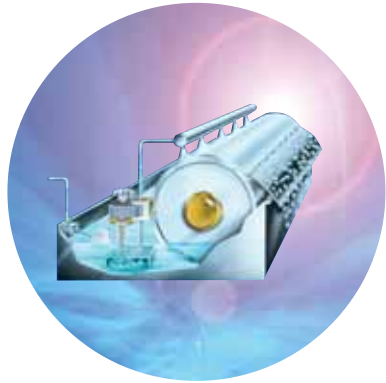
MAR 201 Split

Grade 304 Stainless Steel.

Dimensions (mm) H 525 x W 1330 x D 850

Production rate based on 24 hrs

Max. production/24hrs	Thin ice	Kg	1850
	Thick ice	Kg	1650
Weight		Kg	200
Cooling requirement		W	9600
Fuse rating		Amps	10
Voltage		400/50/3N	
Evaporating temperature		°C	-20



MAR 301 Split

On-board Specification

Grade 304 Stainless Steel.

Dimensions (mm) H 525 x W 1330 x D 850

Production rate based on 24 hrs

Max. production/24hrs	Thin ice	Kg	2465
	Thick ice	Kg	2200
	Sea Water	Kg	1800
Weight		Kg	215
Cooling requirement		W	11250
Fuse rating		Amps	10
Voltage		400/50/3N	
Evaporating temperature		°C	-30



STAND - M

For MF 56 - MF 61 - MF 58-68 - MAR 55 - MAR 75 - MAR 105 - MAR 125 - MAR 71 - MAR 101 - MAR 121

Dimensions (mm) H 1105 x W 1187 x D 984

Weight		Kg	40
--------	--	----	----

Water Filters

WATER FILTERS

Every food service operator understands the importance of quality ingredients. Ice is 100% water and hard water inhibits the performance of all ice machines, reducing efficiency, increasing energy consumption and producing poor quality, cloudy ice.

Protecting your ice machine with a Scotsman water filter makes sound economic sense.

Scotsman water filters provide a cost-effective solution by removing chlorine, arresting scale and filtering harmful particles as small as 0.5 microns, producing the highest quality ingredient water.



To suit models	Filter Reference
AF 80/100, ACM 46/56, EC 46/56	NEW SMALL H

CD 40, TC 180, AF 200, MF 22/30, AF 20/30, ACM 86/106/126/176, EC 86/106/126/176	NEW SINGLE
--	-------------------

ACM 206/226, MC 16, MV 300/450, MF 46, MDT 5N 25 AS, MDT 5N 40 AS, MDT 4F 12 AS	NEW TWIN
--	-----------------

MC 46, MV 600/800/1000, MF 52/56/58/61/83 CM 450 SL, CME 456/506/656/1356	NEW TRIPLE
--	-------------------

MC 1210	2 X NEW TRIPLE
---------	-----------------------

SW 12, SCW 14 B	NEW SMALL C
-----------------	--------------------



Technical help • Service manuals for all models
01473 892272 • Exploded diagrams & parts lists

• Wiring diagrams

Parts • Replacement parts & components

01473 892311 • Service & installation engineer
training

Hubbard Ice Systems, Otley, Ipswich IP6 9NP
sales@hubbardicesystems.co.uk

Technical Support from
Hubbard Ice Systems

The following support services are
available on request:

- Service Manuals
- Exploded diagrams
- Parts lists
- Wiring diagrams
- Replacement parts & components for all models manufactured in the past 10 years
- Service & installation engineer training courses
- Service bulletins and product updates

Quality Control

- 70% of Scotsman components are manufactured by Scotsman
- All components are tested before assembly
- All machines are run and tested prior to factory despatch
- Certified manufacturing to ISO 9000/EN 29000

On site services required

Standard services within 1 metre of
the machines position.

To be supplied by end user prior to
the installation of an Air Cooled
machine (ACM range in particular).

1. Correctly rated power socket
2. ¾" washing machine tap on mains water supply
3. 1½" vented drain - no higher than base of machine (excludes ECM machines)

Further information

Hubbard Ice Systems assistance
and advice is available
08.45 - 17.00 Monday - Friday,
excluding Bank Holidays.

Hubbard Ice Systems

Otley, Ipswich, Suffolk IP6 9NP

Tel: 01473 890129

Fax: 01473 890133

Email:

enquiries@hubbardicesystems.co.uk

