

▶ CASY® TECHNOLOGY

CASY® Cell Counter

# Model DT



**The electronic cell counter**  
for fast determination of cell count and viability.

*Performance starts here*

**SCHÄRFE**   
**SYSTEM**

# CASY® Cell Counter Model DT – Determines the number of cells and cell viability simply, quickly and reliably.

Cell Counters are a must for every biological science lab working with cells. And across the world, a model from the CASY® Technology series of Schärfe System is increasingly the device of choice. Such as the Cell Counter Model DT whenever a device is required for the reliable, exact and fast determination of cell numbers and cell viability.

## Factory-certified calibration

All CASY® Technology devices are equipped with a permanent calibration for biological media which is stable for the long-term – certified by Schärfe System. No modifications or interventions are possible. The calibration is the same for all devices and is stable for the entire service life. This guarantees that the measurement results are reproducible as well as comparable from lab to lab. CASY® Technology therefore protects more than your measurements: your investment also is put on a stable database.

## Electronic pulse area analysis

The Cell Counter Model DT works in combination with the electronic pulse area analysis of Schärfe System. It also records minimal changes in a cell and permits a measurement dynamic of over 1 : 40 in the particle diameter. In addition to the total concentration of the sample, the cell concentration is analysed simultaneously in three different size ranges.

## Two freely positionable cursors = three evaluation ranges

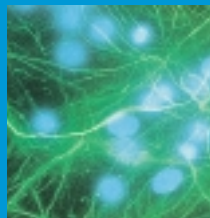
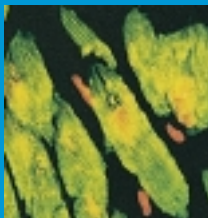
The evaluation ranges are determined using two freely positionable cursors, which can be set in increments of 0.1 µm and which can also be adjusted once the measurement is complete. Systematic shifting of the linked cursors means that the size of the cells in the sample can be analysed in full.



SETUP NUMBER: 01	NAME: I929
Capillary :	150 µm
Sample Volume :	2 x 400 µl
Dilution :	1.000e+02
Left Cursor :	6.80 µm
Right Cursor :	11.20 µm
Display Mode :	%Viability
Total Counts/ml :	On
Interface :	Parallel
Print-Mode :	Manual/PF On
USE MENU AND NEXT TO STEP. USE +/- TO EDIT. USE CANCEL TO LEAVE SCREEN OR ENTER TO CONFIRM CHANGES.	

Measurement results





With the CASY® Cell Counter System Model DT you can determine cell debris, dead cells and viable cells simultaneously in one measurement. Cumulative multiple measurements ensure statistical reliability of results. Cell numbers less than 100 are also recorded reliably.

### 20 cell-specific setups per measuring capillary

Biological cells can be very different and therefore require different device settings. Once measurement volume, cursor positions, dilution factor, etc., are defined for a specific cell type, these measurement and evaluation parameters can be saved as a cell-specific setup. CASY® Cell Counter Model DT provides 20 individually nameable setups per measuring capillary. They are activated simply by pressing a button on the control panel.

### Measurement log conforming to G(X)P

CASY® Cell Counter Model DT works using measurement logs conforming to G(X)P: In addition to the measuring results, all device settings that have led to the result are logged. The measurement logs can be printed out directly or exported to a connected PC.

### Menu-led operation

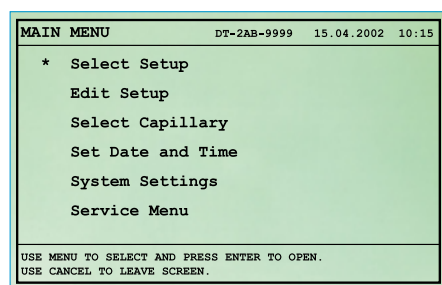
The self-explanatory operation of the CASY® Cell Counter Model DT is fast, simple and clear. All measurement and evaluation parameters are entered in a single mask. This means that even beginners can make settings and perform measurement series within the shortest possible time.

### Integrated quality control

CASY® Technology has a “self-control device” that protects securely against device-related incorrect measurements using warning messages and error messages. All important system functions are checked before each measurement. Integrated service functions can be used to determine and rectify errors quickly.

### User-friendly design

The DT model was designed to meet the highest demands of lab technology. Not just in the field of technology, but also in terms of design: Its compact design unites the different technical elements on the smallest possible area. The control panel can be freely positioned – another benefit with limited space options.



SET :	TUMOR-03	SN :	DT-2AB-9999	CAP :	150 µm
DATE :	15.04.2002	SVOL :	3 x 400 µl	L.CURSOR :	7.6 µm
TIME :	10:15	DIL :	5.000E+01	R.CURSOR :	12.8 µm
Conc Range :	Ok				
Counts :	2911				
Counts/ml (Debris)	3.3- 7.6 µm :	7.483e+04			
Counts/ml (Dead)	7.6- 12.8 µm :	3.441e+04 16.96 %			
Counts/ml (Viable)	12.8-100.0 µm :	1.684e+05 83.04 %			
Total/ml :	7.6-100.0 µm :	2.028e+05			

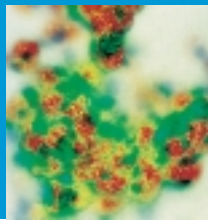
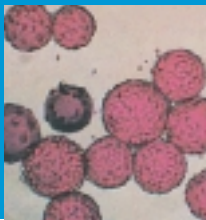
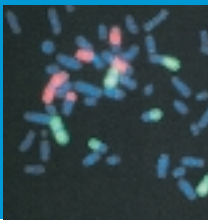
Any queries? Speak to one of our expert advisors. Or schedule a date for practical test straight away.

Phone: +49 (0)7121/38786-0

Fax: +49 (0)7121/38786-99

mail@CASY-Technology.com

www.CASY-Technology.com



**Displayed measurement results:**

*Particle concentration in three measuring ranges ▶ adjustable for specific cells in 0.1 µm increments*

*Debris / ml*

*Viable cells / ml ▶ absolute and as percentage*

*Dead cells / ml ▶ absolute and as percentage*

*Total no. of cells / ml*

**CASY® Cell Counter System Model DT. Technical Data:**

Measurement principle	electronic pulse area analysis of Schärfe System
Dynamics of the measurement*	in diameter > 1:40
Resolution	0,1 µm
Typical analysis time	10 seconds
Sample volume	200 µl - 4 ml
Interfaces	RS232 (DB9), parallel (DB25)
Printer output	PCL (HP-compatible printers)
Data export	ASCII format, MS Excel™ compatible
Dimensions (HxWxD)	39 cm x 31 cm x 39 cm – excluding control panel
Weight	approx. 13.7 kg – incl. control panel

*\* Ratio between the smallest and the largest particle analysed simultaneously.*

*Subject to technical modification.  
CASY® is a registered trademark of  
Schärfe System GmbH.*



**SCHÄRFE**   
**SYSTEM**

Schärfe System GmbH  
Krämerstraße 22  
D-72764 Reutlingen  
Phone: +49 (0) 7121 / 387 86-0  
Fax: +49 (0) 7121 / 387 86-99  
mail@CASY-Technology.com  
www.CASY-Technology.com



*Put us to the test.*