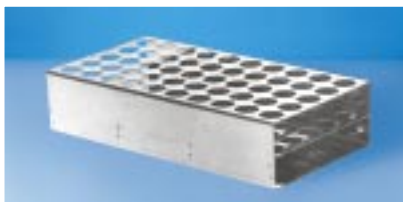
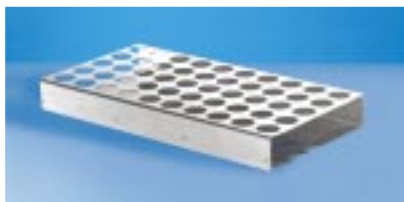


STAINLESS STEEL TEST TUBE RACKS



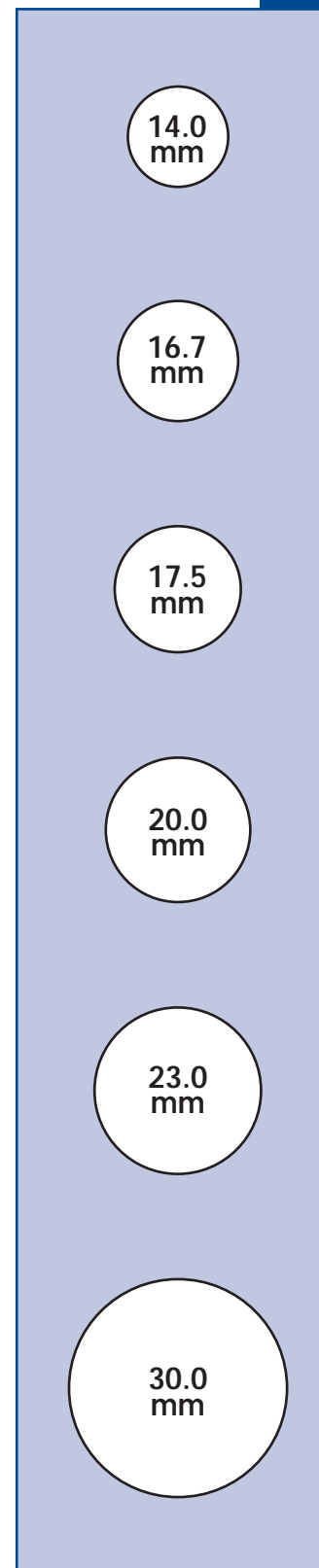
The Raymond A Lamb line of test tube racks are available in either single or double platform configurations. They are manufactured from polished stainless steel and are robust, easy-to-clean and resistant to deep scratching, which greatly reduces harboring of infectious material.

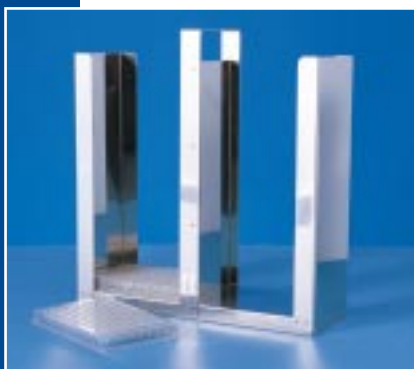


Cat Ref Single Platform	Cat Ref Double Platform	Hole Pattern	L x W
ER14S210	ER14D210	2 x 10	195 x 45mm
ER14S310	ER14D310	3 x 10	195 x 62mm
ER14S410	ER14D410	4 x 10	195 x 81mm
ER14S510	ER14D510	5 x 10	195 x 100mm
ER14S212	ER14D212	2 x 12	233 x 45mm
ER14S312	ER14D312	3 x 12	233 x 62mm
ER14S412	ER14D412	4 x 12	233 x 81mm
ER14S512	ER14D512	5 x 12	233 x 100mm
ER16.7S210	ER16.7D210	2 x 10	222 x 48mm
ER16.7S310	ER16.7D310	3 x 10	222 x 71mm
ER16.7S410	ER16.7D410	4 x 10	222 x 93mm
ER16.7S510	ER16.7D510	5 x 10	222 x 115mm
ER16.7S212	ER16.7D212	2 x 12	275 x 48mm
ER16.7S312	ER16.7D312	3 x 12	275 x 71mm
ER16.7S412	ER16.7D412	4 x 12	275 x 93mm
ER16.7S512	ER16.7D512	5 x 12	275 x 115mm
ER17.5S210	ER17.5D210	2 x 10	230 x 50mm
ER17.5S310	ER17.5D310	3 x 10	230 x 73mm
ER17.5S410	ER17.5D410	4 x 10	230 x 95mm
ER17.5S510	ER17.5D510	5 x 10	230 x 118mm
ER17.5S212	ER17.5D212	2 x 12	265 x 50mm
ER17.5S312	ER17.5D312	3 x 12	265 x 73mm
ER17.5S412	ER17.5D412	4 x 12	265 x 95mm
ER17.5S512	ER17.5D512	5 x 12	265 x 118mm
ER20S210	ER20D210	2 x 10	255 x 55mm
ER20S310	ER20D310	3 x 10	255 x 80mm
ER20S410	ER20D410	4 x 10	255 x 105mm
ER20S510	ER20D510	5 x 10	255 x 130mm
ER20S212	ER20D212	2 x 12	305 x 55mm
ER20S312	ER20D312	3 x 12	305 x 80mm
ER20S412	ER20D412	4 x 12	305 x 105mm
ER20S512	ER20D512	5 x 12	305 x 130mm
ER23S66	--	6 x 6	173 x 173mm
ER23S67	--	6 x 7	173 x 201mm
ER23S710	--	7 x 10	201 x 285mm
ER23S712	--	7 x 12	201 x 341mm
ER30S110	--	1 x 10	355 x 40mm
ER30S26	--	2 x 6	215 x 75mm

Illustrations to scale

NON-STANDARD SIZES CAN BE MANUFACTURED TO CUSTOMER REQUIREMENTS





The Raymond A Lamb line of stainless steel accessories for microbiology is manufactured in polished stainless steel. All items are extremely robust and very easy to clean. Because stainless steel is relatively resistant to deep scratching the likelihood of harboring infectious material is greatly reduced.

All stainless steelware can be manufactured in non-standard sizes to customer specifications – Please contact Raymond A Lamb for details.

MICROTITRATION PLATE CARRIER

Carrier with handle to hold microtitration plates.

Cat Ref	Dimensions	Capacity
E66.52	263 x 89 x 228mm (with handle)	32 microtitration plates



PETRI DISH CARRIER

Carrier to hold 100mm diameter Petri dishes with fold down handle to allow stacking and an index card holder at one end.

Cat Ref	Dimensions	Capacity
E66.51	320 x 110 x 170mm	30 dishes



PETRI DISH TRAYS

Stacking trays to hold a single layer of Petri dishes for incubation – available in two sizes.

Cat Ref	Dimensions	Capacity
E66.515	310 x 160 x 30mm	4 x 90mm dishes
E66.516	310 x 310 x 30mm	9 x 90mm dishes



PIPETTE CANISTERS

Square form pipette canisters with silicone rubber buffers lining the top and bottom in order to protect pipette tips.

Non-standard canisters are available on request with silicone rubber or without silicone rubber for sterilization purposes.

Cat Ref	Length (internal)	Width
EP1	180mm	70mm
EP2	255mm	70mm