

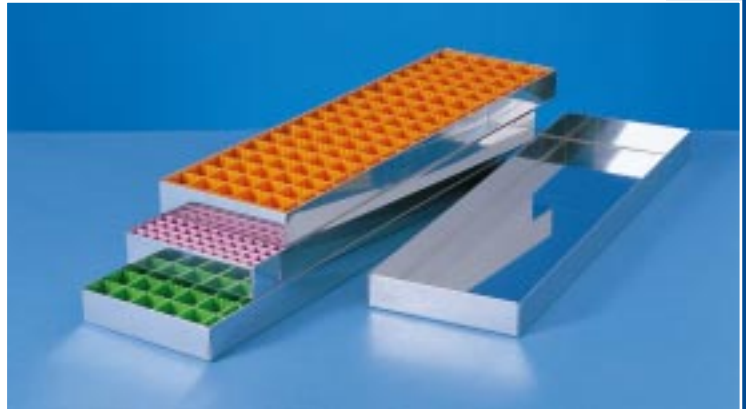
SPECIMEN STORAGE

The Raymond A Lamb range of Specimen Trays and Cryo-Storage systems are based on polished stainless steel trays and racks and plastic divider combs.

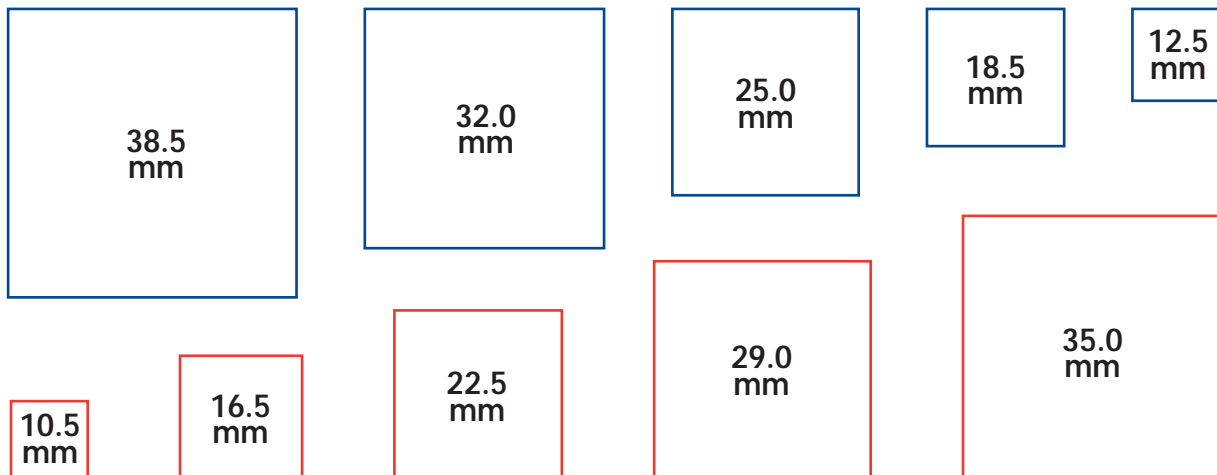
The polished stainless steel trays and framing ensure a robust durable construction which is very easily cleaned.

Resistance to deep scratching reduces harboring of infectious material and accumulated ice is readily removed.

The divider combs are interlocking and can be set to give the sizes below. They are resistant to autoclaving at + 150°C and to temperatures as low as -190°C for storage in liquid nitrogen. Divider combs can be supplied in white, red, yellow, green, purple, orange, blue or black for color coding. Two types of divider comb are available, both with an overall length of 151mm x 28mm deep, having different size teeth for alternative spacing.

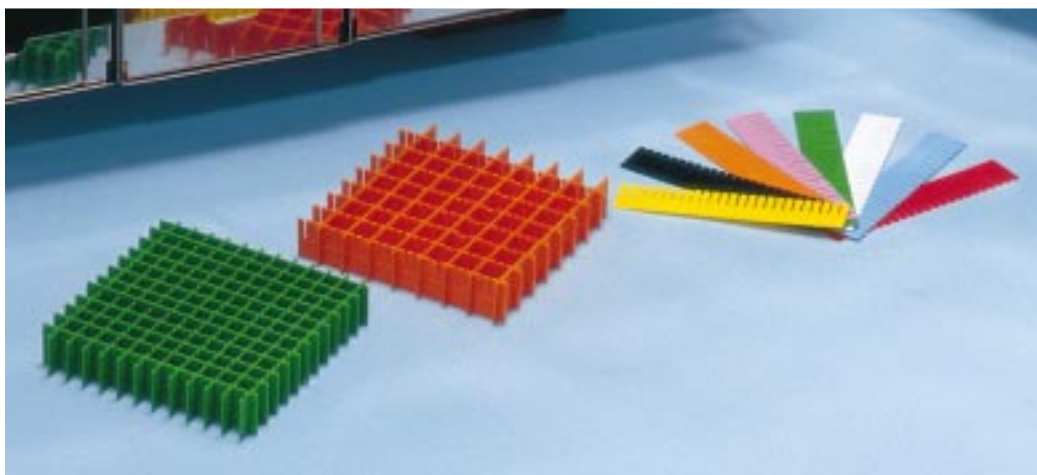


Combs with 23 teeth (5.5mm wide) give the following square divisions:



Combs with 25 teeth (4.5mm wide) give the following square divisions:

Above illustrations to scale



Cat Ref	Tray Dimensions (mm) Width x Length x Height	Division Size (mm)	Division Matrix	Total Divisions
ET155W155/10.5	155 x 155 x 30	10.5	12 x 12	144
ET155W155/12.5		12.5	11 x 11	121
ET155W155/16.5		16.5	8 x 8	64
ET155W155/18.5		18.5	7 x 7	49
ET155W155/22.5		22.5	6 x 6	36
ET155W155/25		25	5 x 5	25
ET155W155/29		29	5 x 5	25
ET155W155/32		32	4 x 4	16
ET155W155/35		35	4 x 4	16
ET155W155/38.5		38.5	3 x 3	9
ET155W310/10.5	155 x 310 x 30	10.5	12 x 24	288
ET155W310/12.5		12.5	11 x 22	242
ET155W310/16.5		16.5	8 x 16	128
ET155W310/18.5		18.5	7 x 14	96
ET155W310/22.5		22.5	6 x 12	72
ET155W310/25		25	5 x 10	50
ET155W310/29		29	5 x 10	50
ET155W310/32		32	4 x 8	32
ET155W310/35		35	4 x 8	32
ET155W310/38.5		38.5	3 x 6	18
ET155W460/10.5	155 x 460 x 30	10.5	12 x 36	432
ET155W460/12.5		12.5	11 x 33	363
ET155W460/16.5		16.5	8 x 24	192
ET155W460/18.5		18.5	7 x 21	147
ET155W460/22.5		22.5	6 x 18	108
ET155W460/25		25	5 x 15	75
ET155W460/29		29	5 x 15	75
ET155W460/32		32	4 x 12	48
ET155W460/35		35	4 x 12	48
ET155W460/38.5		38.5	3 x 9	27
ET310W310/10.5	310 x 310 x 30	10.5	24 x 24	576
ET310W310/12.5		12.5	22 x 22	484
ET310W310/16.5		16.5	16 x 16	256
ET310W310/18.5		18.5	14 x 14	196
ET310W310/22.5		22.5	12 x 12	144
ET310W310/25		25	10 x 10	100
ET310W310/29		29	10 x 10	100
ET310W310/32		32	8 x 8	64
ET310W310/35		35	8 x 8	64
ET310W310/38.5		38.5	6 x 6	36
ET310W460/10.5	310 x 460 x 30	10.5	24 x 36	864
ET310W460/12.5		12.5	22 x 33	726
ET310W460/16.5		16.5	16 x 24	384
ET310W460/18.5		18.5	14 x 21	294
ET310W460/22.5		22.5	12 x 18	216
ET310W460/25		25	10 x 15	150
ET310W460/29		29	10 x 15	150
ET310W460/32		32	8 x 12	96
ET310W460/35		35	8 x 12	96
ET310W460/38.5		38.5	6 x 9	54

OPTIONAL EXTRA

A fixed carrying handle can be factory fitted to any of the above listed trays. To order simply suffix the catalog reference of the tray with "/H" – i.e. ET155W460/32/H.

KINGS BOXES AND TRAYS

A range of stainless steel transport boxes with optional stainless steel trays.

Boxes have welded seams and a swing handle which is comfortable to the hand and folds down to give easy access to box contents. The lids are hinged, have toggle fastening to compress integral silicone rubber seal and are fitted with a destination card holder.



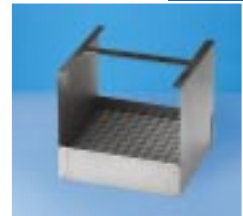
BOXES

Cat Ref	External Dimensions mm (Internal)		
	Length	Width	Height
E89/K1	170 (160)	170 (160)	160 (150)
E89/K2	325 (315)	170 (160)	160 (150)
E89/K3	195 (185)	170 (160)	160 (150)
E89/K4	375 (365)	170 (160)	160 (150)
E89/K5	220 (210)	170 (160)	160 (150)
E89/K6	425 (415)	170 (160)	160 (150)
E89/K7	325 (315)	170 (160)	310 (300)
E89/K8	350 (340)	170 (160)	160 (150)
E89/K9	350 (340)	170 (160)	310 (300)
E89/K10	375 (365)	170 (160)	310 (300)
E89/K11	275 (265)	205 (195)	295 (285)
E89/K12	535 (525)	205 (195)	295 (285)
E89/K13	490 (410)	205 (195)	295 (285)

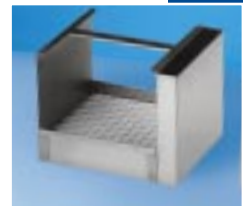


TRAYS

Cat Ref	External Dimensions mm (Internal)			Fits Box
	Length	Width	Height	
E89/T1 (no pockets)	155 (152)	155 (152)	147 (145)	E89/K1 takes 1 E89/K2 takes 2



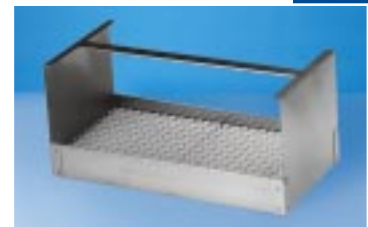
Cat Ref	External Dimensions mm (Internal)			Fits Box
	Length	Width	Height	
E89/T2 (1 pocket)	180 (152)	155 (152)	147 (145)	E89/K3 takes 1 E89/K4 takes 2



Cat Ref	External Dimensions mm (Internal)			Fits Box
	Length	Width	Height	
E89/T3 (2 pockets)	205 (152)	155 (152)	147 (145)	E89/K5 takes 1 E89/K6 takes 2



Cat Ref	External Dimensions mm (Internal)			Fits Box
	Length	Width	Height	
E89/T4 (no pockets)	307 (304)	155 (152)	147 (145)	E89/K2 takes 1 E89/K7 takes 2





TRAYS

Cat Ref
E89/T5 (1 pocket)

External Dimensions mm (Internal)		
Length	Width	Height
332 (304)	155 (152)	147 (145)

Fits Box
E89/K8 takes 1
E89/K9 takes 2



Cat Ref
E89/T6 (2 pockets)

External Dimensions mm (Internal)		
Length	Width	Height
357 (304)	155 (152)	147 (145)

Fits Box
E89/K4 takes 1
E89/K10 takes 2



SPECIMEN BAG COLLECTION TRAYS

Cat Ref	External Dimensions mm (Internal)			Fits Box
	Length	Width	Height	
E89/T7 (1 hanger)	260 (250)	178 (175)	280 (215)	E89/K11 takes 1 E89/K12 takes 2

Cat Ref	External Dimensions mm (Internal)			Fits Box
	Length	Width	Height	
E89/T8 (2 hangers)	470 (455)	178 (175)	280 (215)	E89/K13 takes 1



SAMPLING TRAY

Each tray comes with a fixed handle and compartments for racks, stands, etc.

Cat Ref	Dimensions
E7.2	350 x 190 x 200mm