

FINE TWEEZERS

Fine pointed stainless steel tweezers with G-pin and machined grip on arms and points which are straight or curved.

| Cat Ref | Points | Length |
|---------|----------|--------|
| E11 | Straight | 11cm |
| E12 | Straight | 13cm |
| E13 | Curved | 13cm |
| E13.1 | Straight | 15cm |



DENTAL PACKING TWEEZERS

Fine pointed stainless steel tweezers with G-pin and machined grip on arms and angled points.

| Cat Ref | Points | Length |
|---------|--------|--------|
| E13.2 | Angled | 15cm |



DISSECTION TWEEZERS

Stainless steel tweezers with machined grip on arms with blunt points or rat-toothed tips.

| Cat Ref | Points | Length |
|---------|---------|--------|
| E14 | Blunt | 13cm |
| E15 | Blunt | 15cm |
| E16 | Blunt | 20cm |
| E16.1 | Toothed | 13cm |



WATCHMAKER'S TWEEZERS

Brushed stainless steel tweezers with smooth arms and very fine straight or curved points.

| Cat Ref | No | Points | Length |
|---------|----|----------|--------|
| E16.2 | 3 | Straight | 12cm |
| E16.3 | 4 | Straight | 11cm |
| E16.4 | 5 | Straight | 11cm |
| E16.5 | 7 | Curved | 12cm |



CLAMPING FORCEPS

Locking stainless steel forceps with machined grip on blunt points.

| Cat Ref | Points | Length |
|---------|--------------------------------|--------|
| E16.08 | Straight (Halstead's Mosquito) | 13cm |
| E16.07 | Curved (Dunhill's) | 13cm |



BONE CUTTING FORCEPS

Sturdy cutting forceps with spring opening for hard tissue.

| Cat Ref | Material | Length |
|---------|-----------------|--------|
| E16.05 | Carbon Steel | 12cm |
| E16.06 | Stainless Steel | 17cm |



KUEHNE'S COVERSIP TWEEZERS

Tweezers with angled flat blades for handling coverslips.

| Cat Ref | Material | Length |
|---------|-----------------|--------|
| E16.7 | Stainless Steel | 11cm |





BOW SPRING SCISSORS

Fine pointed stainless steel scissors with opening spring and curved blades.

| Cat Ref | Points | Length |
|---------|--------|--------|
| E85.5 | Curved | 12cm |



OPEN HANDLE SCISSORS

Fine pointed stainless steel scissors with straight or curved blades.

| Cat Ref | Points | Length |
|---------|----------|--------|
| E79 | Straight | 11cm |
| E80 | Straight | 13cm |
| E81 | Straight | 15cm |
| E82 | Curved | 11cm |



CLOSED HANDLE SCISSORS

Stainless steel scissors with sharp or blunt points and straight blades.

| Cat Ref | Points | Length |
|---------|-------------|--------|
| E83 | Sharp/Sharp | 13cm |
| E84 | Sharp/Blunt | 13cm |
| E85 | Blunt/Blunt | 13cm |



PROBE SCISSORS

Closed handle stainless steel scissors with sharp point and probe and straight blades.

| Cat Ref | Points | Length |
|---------|-------------|--------|
| E85.7 | Sharp/Probe | 13cm |



BOWEL SCISSORS

Closed handle stainless steel scissors with blunt and barbed points and straight blades.

| Cat Ref | Points | Length |
|---------|--------------|--------|
| E85.6 | Blunt/Barbed | 22cm |

MOUNTED NEEDLES

Stainless steel pointed needles mounted in a handle.

| Cat Ref | Handle | Length |
|---------|-----------------|--------|
| E60 | Wood | 135mm |
| E64 | Stainless Steel | 130mm |



PROBING NEEDLES

Angled stainless steel blunt needles mounted in a handle.

| Cat Ref | Handle | Length |
|---------|-----------------|--------|
| E86 | Wood | 135mm |
| E87.1 | Stainless Steel | 130mm |



CUTTING NEEDLE

Stainless steel needle with a sharpened blade mounted in a handle.

| Cat Ref | Handle | Length |
|---------|-----------------|--------|
| E62 | Stainless Steel | 135mm |



NEEDLE STAND

Stainless steel stand with 6 slots for needles, brushes etc.

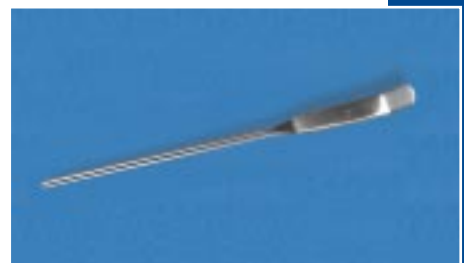
| Cat Ref | Size |
|---------|------------|
| E64.5 | 135 x 92mm |



SECTION LIFTER

Stainless steel flattened blades with angled tips.

| Cat Ref | Length |
|---------|--------|
| E88 | 130mm |



CHATTERWAY'S SPATULAS

Stainless steel spatula with two blades angled on one tip.

| Cat Ref | Length |
|---------|--------|
| E88.3 | 100mm |
| E88.1 | 150mm |
| E88.2 | 200mm |





SCALPELS

One piece stainless steel scalpels with brushed handle and polished blade.

| Cat Ref | Blade Length | Total Length |
|---------|--------------|--------------|
| E73 | 35mm | 140mm |
| E74 | 45mm | 150mm |
| E75 | 50mm | 155mm |



BRAIN KNIFE

One piece stainless steel knife with brushed handle and polished blade.

| Cat Ref | Blade Length | Total Length |
|---------|--------------|--------------|
| E18.35 | 250mm | 380mm |



DISPOSABLE AUTOPSY KNIVES

Stainless steel double honed blade with molded plastic handle with finger guard for added safety. Supplied in boxes of 10.

| Cat Ref | Blade Length | Total Length | Use |
|-----------|--------------|--------------|-----------|
| E18.37/4 | 100mm | 220mm | Cartilage |
| E18.37/6 | 150mm | 270mm | Trimming |
| E18.37/8 | 200mm | 320mm | Macro |
| E18.37/10 | 250mm | 370mm | Lung |
| E18.37/12 | 300mm | 420mm | Brain |

SURGICAL BLADES & HANDLES



SWANN-MORTON offer a comprehensive line of handles and knives to fit their range of high quality disposable blades which are available in STERILE and NON-STERILE varieties.

SCALPEL HANDLES

A range of standard nickel alloy scalpel handles supplied individually wrapped. The new B3 stainless steel handle is pen-shaped for easier control.

| Cat Ref | No | Material | Length |
|----------|----|-----------------|--------|
| E77/B3 | B3 | Stainless Steel | 130mm |
| E77/3 | 3 | Nickel Alloy | 120mm |
| E77.1/3L | 3L | Nickel Alloy | 210mm |
| E77/4 | 4 | Nickel Alloy | 130mm |
| E77.1/4L | 4L | Nickel Alloy | 210mm |
| E77/7 | 7 | Nickel Alloy | 160mm |



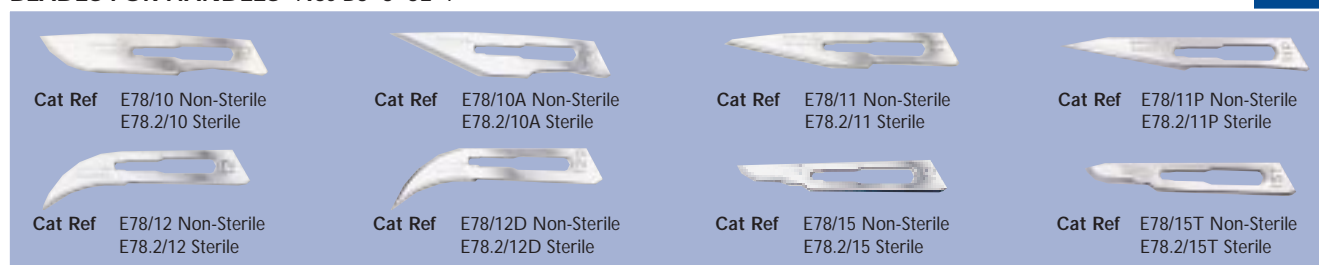
B3
3
3L
4
4L
7

SCALPEL BLADES

NON-STERILE Blades are produced in carbon steel. Sealed in foil packs of 5 and supplied in boxes of 100.

STERILE Blades produced in stainless steel. Sterilization is by Gamma Radiation (minimum dosage 25 K.Gy. 2.5 M.Rad). Individually foil wrapped and supplied in boxes of 100.

BLADES FOR HANDLES Nos B3 3 3L 7



BLADES FOR HANDLES Nos 4 4L



SWANN-MORTON SURGICAL BLADE REMOVERS

The Swann-Morton Surgical Blade Remover is a disposable, easy to use safety-first device. It fits all of the above handles and blades and is available for sterile or non-sterile single use.

| Cat Ref | | Pack Size |
|----------|-------------|-----------|
| E78/5502 | Sterile | Box/50 |
| E78/5505 | Non-Sterile | Box/100 |



SCISSOR TYPE SURGICAL BLADE REMOVERS

A quality forceps-style blade remover in stainless steel to aid in the safe removal of No 3 and No 4 fitted blades.

| Cat Ref | Length |
|----------|--------|
| E78/STBR | 140mm |



MAJOR SCALPELS & AUTOPSY KNIVES



SWANN-MORTON MAJOR SCALPELS

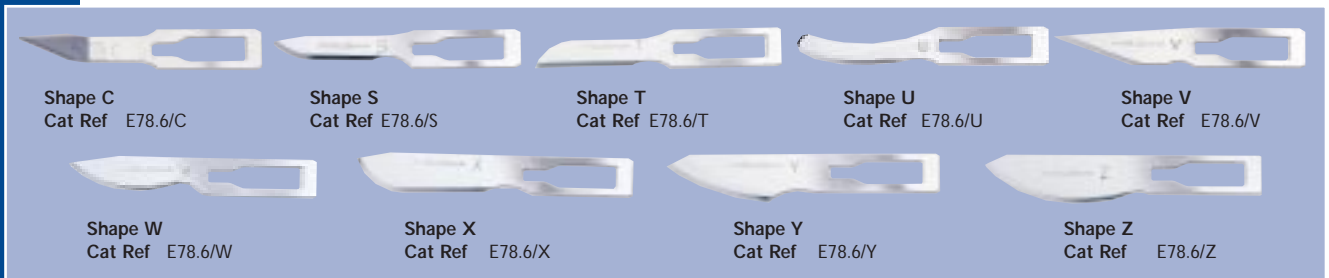
HANDLE

Nickel alloy handles available in a standard or long format. Both handles can be used with a range of interchangeable extra strong blades.

| Cat Ref | Handle Length |
|---------|---------------|
| E78.4 | 112mm |
| E78.5 | 170mm |

BLADES

Blades are carbon steel, sterile, individually foil-wrapped and supplied in boxes of 50. (Except shape C which are supplied in boxes of 20) Sterilization is by Gamma Radiation (minimum dosage 25 K.Gy 2.5 M/Rad).



Shape C
Cat Ref E78.6/C

Shape S
Cat Ref E78.6/S

Shape T
Cat Ref E78.6/T

Shape U
Cat Ref E78.6/U

Shape V
Cat Ref E78.6/V

Shape W
Cat Ref E78.6/W

Shape X
Cat Ref E78.6/X

Shape Y
Cat Ref E78.6/Y

Shape Z
Cat Ref E78.6/Z



SWANN-MORTON PM40 KNIVES

Post mortem knives with heavy-duty carbon steel blade and screw-type fitting to either blue metal or autoclavable stainless steel handle. Blades are supplied either standard shape or bull-nosed individually wrapped in boxes of 10.

| Cat Ref | | Length |
|---------|------------------------|--------|
| E18.94 | Blue Metal Handle | 122mm |
| E18.95 | Stainless Steel Handle | 130mm |
| E18.96 | Standard PM40 Blades | 86mm |
| E18.96B | Bull-nosed PM40 Blades | 86mm |



SWANN-MORTON PM60 KNIVES

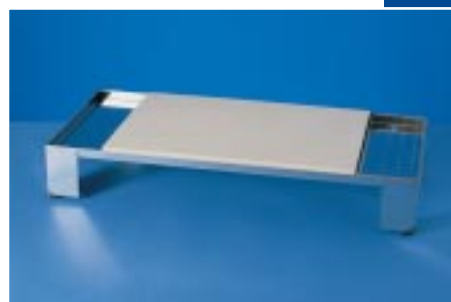
Complementing the existing Post Mortem range, the PM60 offers easy blade change and a finer shaped carbon-steel blade. The stainless steel handle takes both the standard shape PM60 blade or the bull-nosed version, both types are individually wrapped in boxes of 10.

| Cat Ref | | Length |
|---------|-----------------------------|--------|
| E18.97 | No 8 Stainless Steel Handle | 145mm |
| E18.98 | Standard PM60 Blades | 75mm |
| E18.98B | Bull-nosed PM60 Blades | 70mm |

POST MORTEM BOARD TABLE

A low-level stainless steel post mortem table which includes the E7.7 board. This board sits at a slight gradient to aid drainage away from the operator. The table has rubber feet to prevent movement and a removable perforated tray is provided for draining specimens as well as an area for storing dissecting instruments.

| Cat Ref | Overall Size | Board Size | Tray Size |
|---------|-------------------|------------------|------------------|
| E7.7/T | 668 x 313 x 108mm | 454 x 307 x 18mm | 307 x 105 x 18mm |



POST MORTEM BOARDS

The post mortem boards consist of a solid block of rubber/clay compound which is impervious to fluids making them very hygienic to use. The density and hardness ensure optimum life for both boards and knives. The textured surface prevents specimens from slipping and the buff color provides excellent contrast, particularly for biopsy material.

| Cat Ref | Size | |
|---------|------------------|------------------------------|
| E7.6 | 307 x 232 x 14mm | |
| E7.7 | 454 x 307 x 18mm | |
| E7.8 | 454 x 454 x 18mm | Non standard sizes available |



CORK BOARDS

Resin bonded cork dissecting boards.

| Cat Ref | Size |
|---------|------------------|
| E7.3 | 305 x 305 x 20mm |
| E7.4 | 450 x 305 x 20mm |
| E7.5 | 450 x 450 x 20mm |



CORK SHEETS

Resin bonded cork sheets for specimen preparation.

| Cat Ref | Size | Pack Size |
|---------|-------------------|-----------|
| E7.28 | 305 x 305 x 1.6mm | Pack/6 |



CORK DISKS

Cork disks for cryostat use.

| Cat Ref | Size | Pack Size |
|----------|---------------------------|-----------|
| E7.15/CD | 20mm diameter x 3mm thick | Pack/100 |





DISPOSABLE DISSECTING BOARDS

Disposable dissection boards manufactured from layered cardboard and sponge.

| Cat Ref | Size | Pack Size |
|---------|-------------------|-----------|
| E7.35 | 150 x 210 x 3.5mm | Pack/20 |



DISPOSABLE DISSECTING PINS

Pin mounted in plastic head with indicator label.

| Cat Ref | Length | Pack Size |
|---------|--------|-----------|
| E9.1 | 12mm | Box/10 |



WATCHMAKER'S EYEGLASS

Black molded plastic mount with single bi-convex lens.

| Cat Ref | Magnification |
|---------|---------------|
| E22 | x3 |



GOWLLAND'S MAGNIFIERS

Plano-convex doublet glass lenses in molded plastic mount which folds into a protective sleeve.

| Cat Ref | Magnification |
|---------|---------------|
| E20 | x8 |
| E20.1 | x10 |