

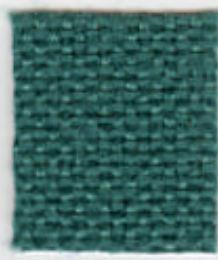
Camborne Kendal



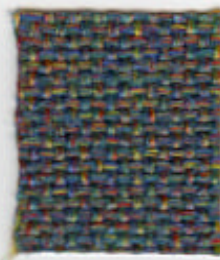
Aqua KL786



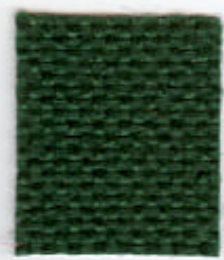
Aqua Green KL020



Carron KL015



Broom KL074



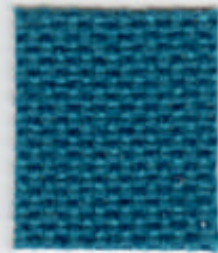
Newt KL069



Alanya KL049



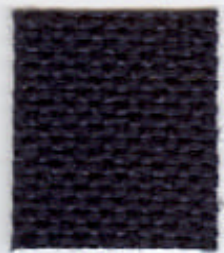
Tay KL096



Turquoise KL802



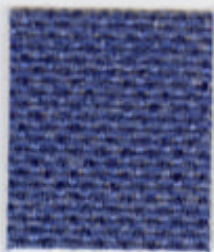
Diesel KL082



Navy KL754



Blue KL011



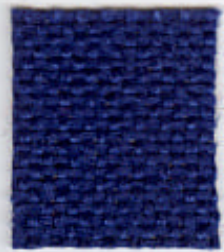
Strathbeg KL051



Royal KL757



Cluanie KL078



Chelsea KL010



Laxford KL075



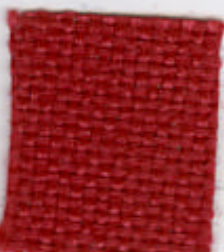
Lavendar KL800



Dilemma KL801



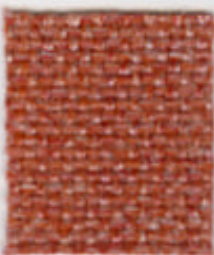
Fyne KL076



Madrid KL037



Muffin KL012



Highland KL093



Toreador KL007



Morello KL008



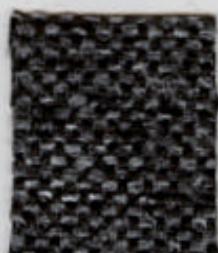
Jacobean KL014



Grey KL753



Pumice KL031



Anthracite KL036



Shadow KL002



Crow KL019

Camborne Kendal



UK

Composition
100% Polyolefin

Weight
230g/m² ±5%
(325g/lin.m. ±5%)

Width
140cm ±2% Usable

Abrasion Resistance
40,000 cycles
(800g/12Kpa) Martindale

Flammability
BS EN 1021 - 1 : 1994
(cigarette)

Note: Flammability performance is dependent on components used.

Light Fastness
6+ (ISO 105 - B02:1996)

Fastness to Rubbing
Wet: 4+ Dry: 4+
(ISO 105 - X12:1995)

Maintenance
Wipe clean with a damp cloth

Availability
Generally ex-stock

Colour Matching
Batch to batch variations in shade may occur within commercial tolerances.

D

Zusammensetzung
100% Polyolefin

Gewicht
230g/m² ±5%
(325g/ld.M.±5%)

Breite
140cm ±2% ohne Webkante

Scheuerfestigkeit
40,000 Scheuertouren
(800g/12Kpa) Martindale

Feuersicherung
BS EN 1021 - 1 : 1994
(Zigarettestest)

Bemerkung: Schwerentflammbarkeit hängt von verwendeten Komponenten ab.

Lichtechtheit
6+ (ISO 105 - B02:1996)

Reibechtheit
Nass: 4+ Trocken: 4+
(ISO 105 - X12:1995)

Reinigung
Mit einem feuchten Tuch abwischen.

Lieferzeit
Im allgemeinen ab Lager

Farbabweichungen
Handelsübliche Farbabweichungen vorbehalten.

F

Composition
100% Polyolefin

Poids
230g/m² ±5%
(325g/m.l. ±5%)

Largeur
140cm ±2% utilisable

Resistance a l'abrasion
40,000 Tours
(800g/12Kpa) Martindale

Flammabilité
BS EN 1021 - 1 : 1994
(cigarette)

Notes: Réaction au feu dépend du composite utilisé.

Solidité à la Lumière
6+ (ISO 105 - B02:1996)

Solidité au Frottement
Mouillé: 4+ Sec: 4+
(ISO 105 - X12:1995)

Nettoyage
Essuyez avec une étoffe humide.

Disponibilité
Normalement en stock

Standardisation des coloris
Variations de coloris d'un bain à un autre peuvent se manifester.

N

Materiale
100% Polyolefin

Vekt
230g/m² ±5%
(325g/lin.m. ±5%)

Bredde
140cm ±2% anvendbar

Siltstyrke
40,000 Siltebevegeser
(800g/12Kpa) Martindale

Flammesikring
BS EN 1021 - 1 : 1994
(cigarette)

Bemerk: Flammesikring er avhengig av type komponent benyttet.

Lysekthet
6+ (ISO 105 - B02:1996)

Gniethet
Våt: 4+ Torr: 4+
(ISO 105 - X12:1995)

Rengjøring
Rengjøres ved hjelp av en fuktig klut

Leveringstid
Normalt lagervare

Fargeavvik
Fargeavvik innenfor kommersielle toleransegrenser kan forekomme.

ES

Composición
100% Polyolefin

Peso
230g/m² ±5%
(325g/lin.m. ±5%)

Ancho
140cm ±2% utilizable

Resistencia a la abrasión
40,000 ciclos
(800g/12Kpa) Martindale

Inflamabilidad
BS EN 1021 - 1 : 1994
(cigarrillo)

Condiciones ignífugas dependientes del tipo de foam utilizado

Solidez a la luz
6+ (ISO 105 - B02:1996)

Solidez al rozamiento
Húmedo: 4+ Seco: 4+
(ISO 105 - X12:1995)

Mantenimiento
Limpiar con un paño húmedo.

Disponibilidad
Directamente de stock

Igualdad de color
Cada lote puede tener pequeñas variaciones en el tono dentro de las tolerancias comercialmente aceptadas.