

CLEAN THE AIR

COMPLETE EXTRACTOR KITS FOR CAPTURE AND FILTRATION OF FUMES AND GASES



Extractor Kit 500

EK 500 is a compact filter solution with very low sound level. The air passes through an efficient filter with particle and gas filtration. The filter captures the noxious fumes and gases that normally occur when soldering, gluing and working with solvents.

The filter is disposable and is easily changed. The arm is one meter long and is easily mounted without tools on to the workbench. It is flexible in all directions.

The air flow in the arm can be regulated by a damper. The extraction hood supplied with the kit improves the capture ability for heavy and light gases. There are another two hoods shown under accessories.

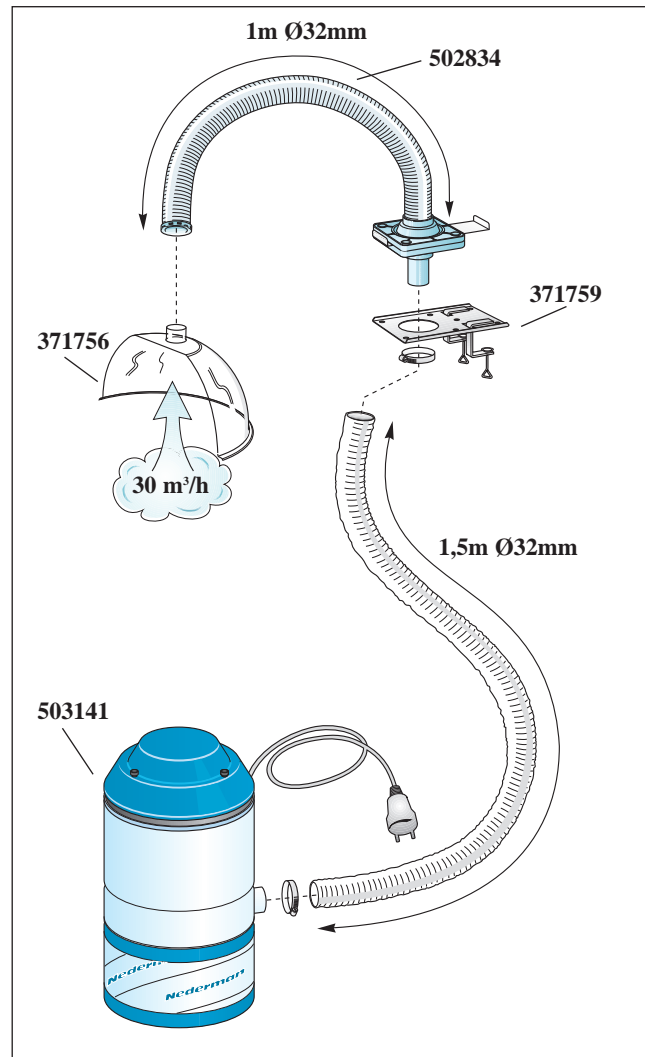


The compact size and the very low noise level allows the Kit to be positioned close to the user.

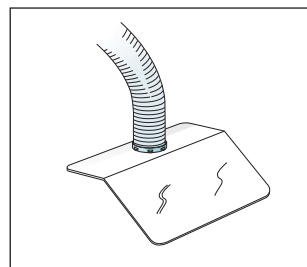
Technical data			
Voltage:	230 V	Weight:	8.6 kg
Power:	80 W	Height:	400 mm
Soundlevel:	43 dB(A)	Diameter:	255 mm
Filter efficiency			
DOP:	99.97 %		

Extractor Kit 500

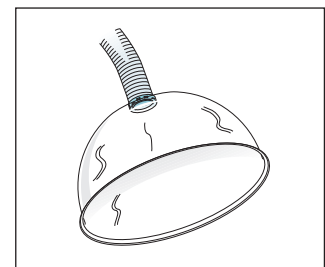
Part.no. 510634



Accessories



Flange hood
WxH: 150x150 mm
Part.no. 371525



Dome hood
Ø 260 mm
Part.no. 371757

For further accessories see "System 32".

EK 1000 enables two simultaneous users to capture and filter the noxious fumes and gases that normally occur when soldering, gluing and working with solvents.

The air is filtered through a particle and gas filter. The filter is disposable and filter change is made dust free. The speed of the fan is variably controlled by a speed controller, placed on the work bench. The user can also adjust the airflow by using the damper included in each arm. Correct air flow can therefore easily be set to suit different applications.

The extraction hood supplied with the kit improves the capture ability for heavy and light gases. There are another two different hoods shown under accessories.



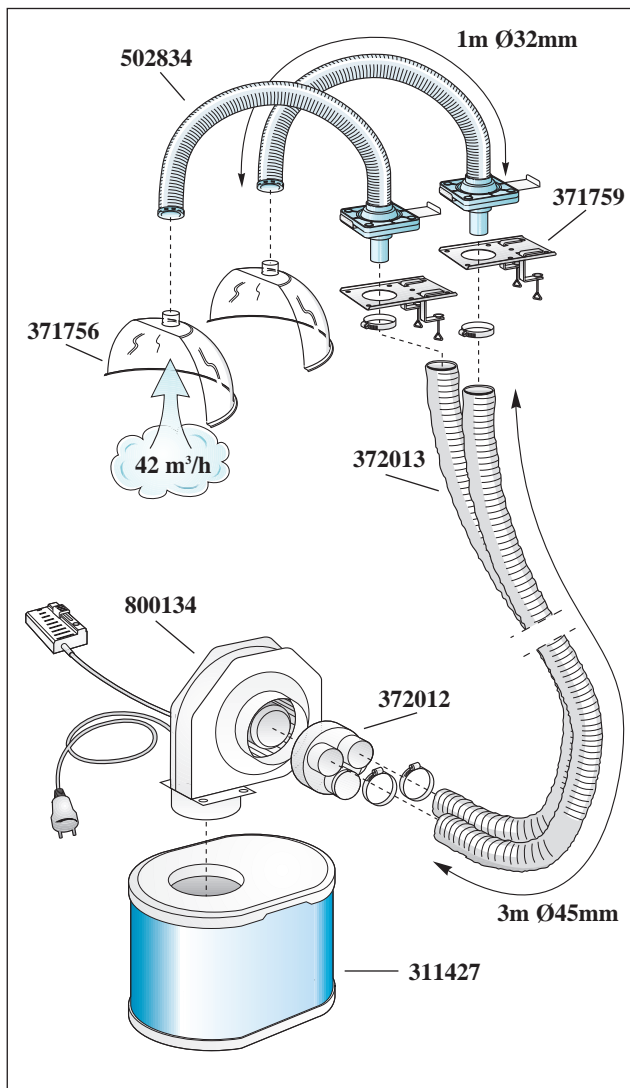
The arms are quickly mounted with the flexible bench brackets and within a couple of minutes the kit is ready for use.

Technical data

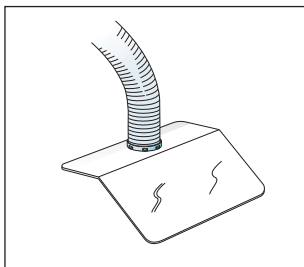
Voltage:	230 V	Weight filter/fan:	8.0 kg
Power:	110 W	Height filter/fan:	555 mm
Soundlevel:	60 dB(A)	Length filter:	388 mm
Filter efficiency		Width filter:	288 mm
DOP:	99.97 %		

Extractor Kit 1000

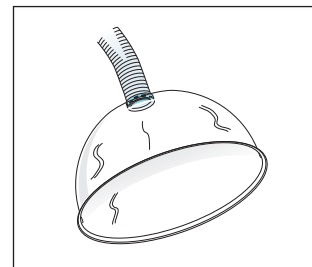
Part.no. 511134



Accessories



Flange hood
WxH: 150x150 mm
Part.no. 371525



Dome hood
Ø 260 mm
Part.no. 371757

For further accessories see "System 32".

Extractor Kit 1500

EK 1500 is a complete system for the capture and filtration of fumes and gases. Each arm is connected to the fan by a three meter long hose. The speed of the fan is variably controlled by a speed controller. Each arm is also supplied with a damper which enables the user to adjust the air-flow in the arm. Correct air flow can therefore easily be set to suit different applications.

The air is filtered through a particle and gas filter. The filter captures the noxious fumes and gases that normally occur when soldering as well as working with glue and solvents. The filter is disposable and the filter change is made dust free.

The extraction hoods, supplied with the kit increases the capture efficiency. Two other hoods can be found under accessories.

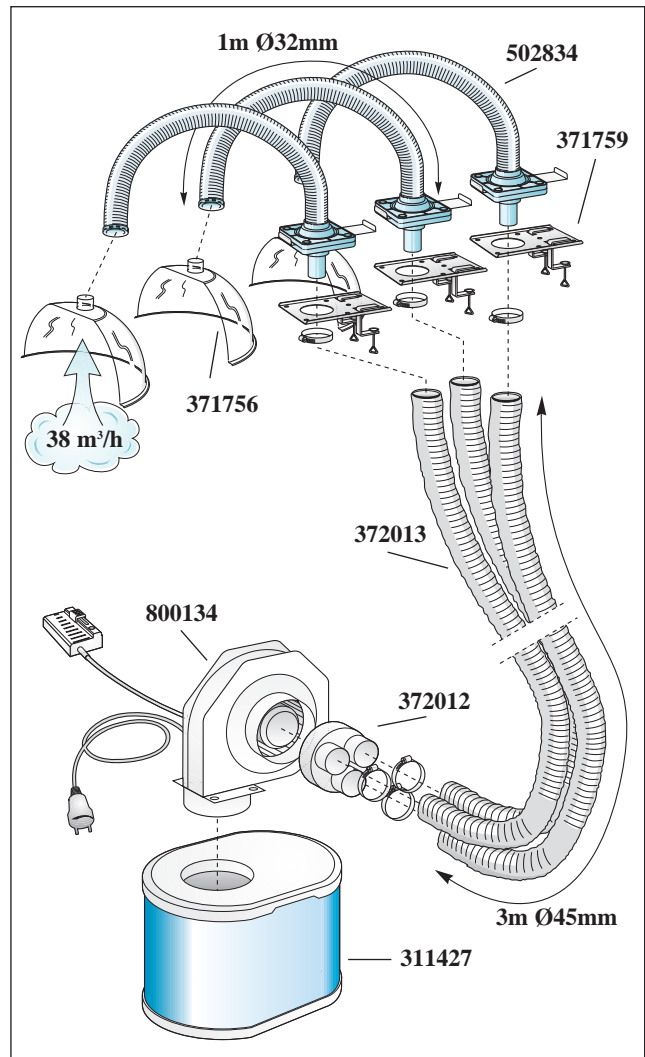


The filter system can easily be moved and assembled for use elsewhere.

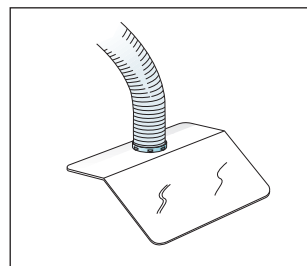
Technical data		
Voltage:	230 V	Weight filter/fan: 8.0 kg
Power:	120 W	Height filter/fan: 555 mm
Soundlevel:	60 dB(A)	Length filter: 388 mm
Filter efficiency		Width filter: 288 mm
DOP:	99.97 %	

Extractor Kit 1500

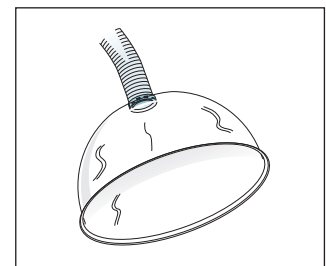
Part.no. 511634



Accessories



Flange hood
WxH: 150x150 mm
Part.no. 371525



Dome shaped hood
Ø 260 mm
Part.no. 371757

For further accessories see "System 32".

EK 2000 offers the user a complete filter solution with different capture possibilities. The adjustable sides of the hood enable the user to find the correct set-up for different types of applications.

The speed of the fan is adjusted with the speed controller placed close to the user. Correct air-flow can easily be set to suit different applications. The speed controller is also used as an on and off switch.

The air is filtered through an efficient 2-stage filter for particles and gas. The filter captures the noxious fumes and gases that normally occur when soldering, gluing and working with solvents. The filter is disposable and the filter change is made dust free. To the arm there are another three hoods, see accessories.



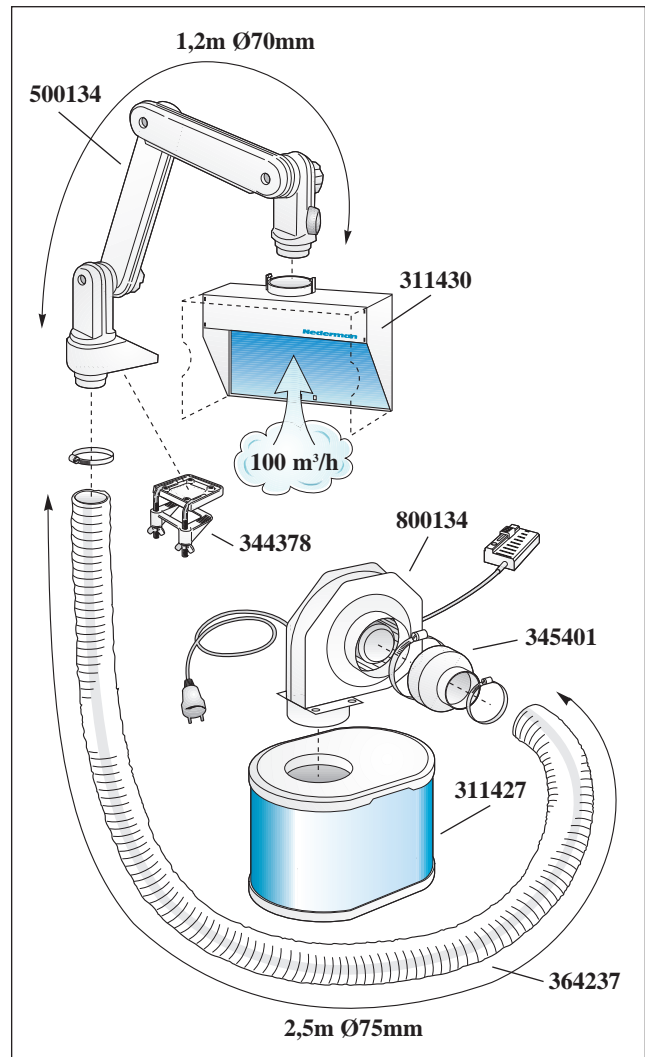
The flexibility of the arm and the different set up of the hood creates a workplace with efficient extraction of fumes and gases.

Technical data

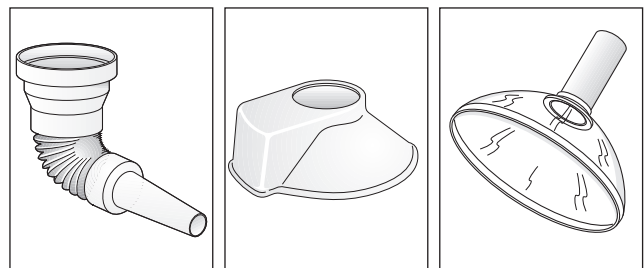
Voltage:	230 V	Weight filter/fan:	8.0 kg
Power:	112 W	Height filter/fan:	555 mm
Soundlevel:	60 dB(A)	Length filter:	388 mm
Filter efficiency		Width filter:	288 mm
DOP:	99.97 %		

Extractor Kit 2000

Part.no. 510134



Accessories



Adjustable nozzle
Part.no. 332462

Round hood
Ø 250 mm
Part.no. 344085

Dome hood
Ø 350 mm
Part.no. 364733

For further accessories see "Extractor Kit 2000".

Extractor Kit 2500

EK 2500 is a flexible system for the capture of noxious fumes and gases that normally occur when soldering, gluing and working with solvents.

The two arms are made of aluminium and plastic and have three adjustable joints. The arms are easy to adjust to get close to the source. Correct air flow can easily be set with help of the speed controller to suit different applications. The arms can be used independently from each other, due to the variable speed of the fan and the damper in each arm.

To the arms there are a number of different hoods to be used to increase the capture ability. The user easily shift from one hood to the other.



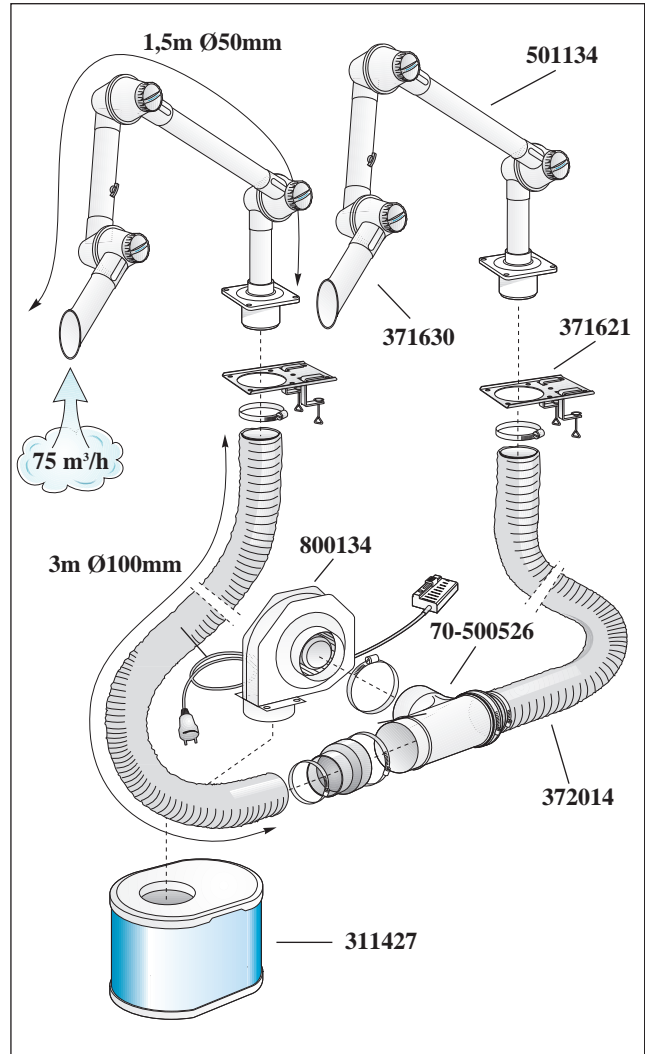
The flexible bench bracket gives the user many options when mounting the arm.

Technical data

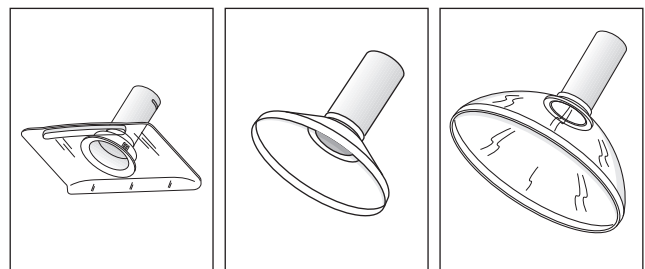
Voltage:	230 V	Weight filter/fan:	8.0 kg
Power:	127 W	Height filter/fan:	555 mm
Soundlevel:	60 dB(A)	Length filter:	388 mm
Filter efficiency		Width filter:	288 mm
DOP:	99.97 %		

Extractor Kit 2500

Part.no. 512134



Accessories



Flange hood
WxH: 300x200mm
Part.no. 371633

Metal hood
Ø 250 mm
Part.no. 371635

Dome hood
Ø 350 mm
Part.no. 371634

For further accessories see "Miniarm FX".

EK 3000 is quickly and easily installed and creates a workplace where fumes and gases are efficiently captured.

The arm is made of aluminium and plastic and has three adjustable joints. One hand adjustment and no particular strength is needed to adjust and position the arm close to the source. The filter efficiently absorbs the noxious fumes and gases that normally occur when soldering, gluing and working with solvents. The filter is disposable and the filter change is made dust free.

The speed of the fan can easily be adjusted with the speed controller, to suit different applications. A number of different hoods can be used to increase the capture ability.



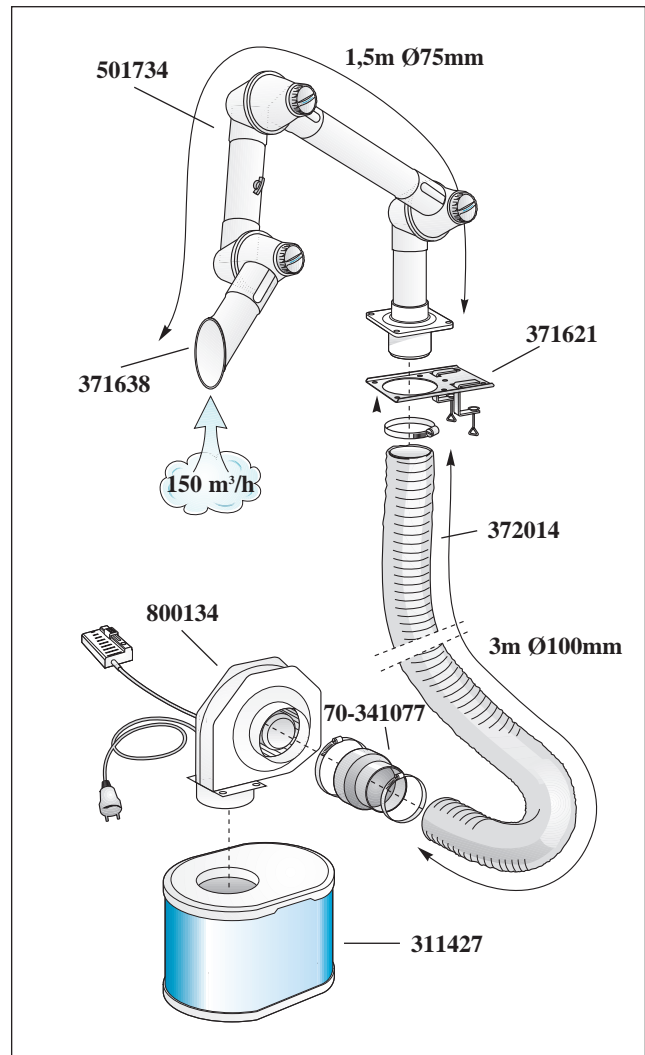
The arm is quickly mounted with the flexible bench bracket and within a couple of minutes the Kit is ready for use.

Technical data

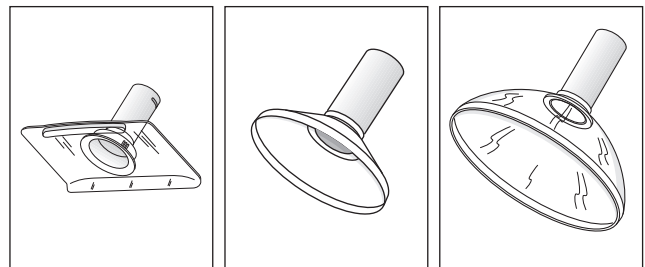
Voltage:	230 V	Weight filter/fan:	8.0 kg
Power:	127 W	Height filter/fan:	555 mm
Soundlevel:	60 dB(A)	Length filter:	388 mm
Filter efficiency		Width filter:	288 mm
DOP:	99.97 %		

Extractor Kit 3000

Part.no. 512634



Accessories



Flange hood	Metal hood	Dome hood
WxH: 300x200mm	Ø 250 mm	Ø 350 mm
Part.no. 371641	Part.no. 371643	Part.no. 371642

For further accessories see "Miniarm FX".

PRODUCT LEAFLETS

Nederman has a wide range of products for capture and filtration of particles, fumes and gases. See separate product leaflets for more information.



Nederman[®]
Improving your workspace

Right reserved for modification of design and measurements.

Nederman Ltd.
PO Box 503, 91 Walton Summit
Bamber Bridge
Preston
Lancashire
PR5 8AF



RS23930

support@nederman.co.uk
www.nederman.co.uk



INVESTOR IN PEOPLE

Tel: +44 (0)1772 334721
Fax: +44 (0)1772 315273