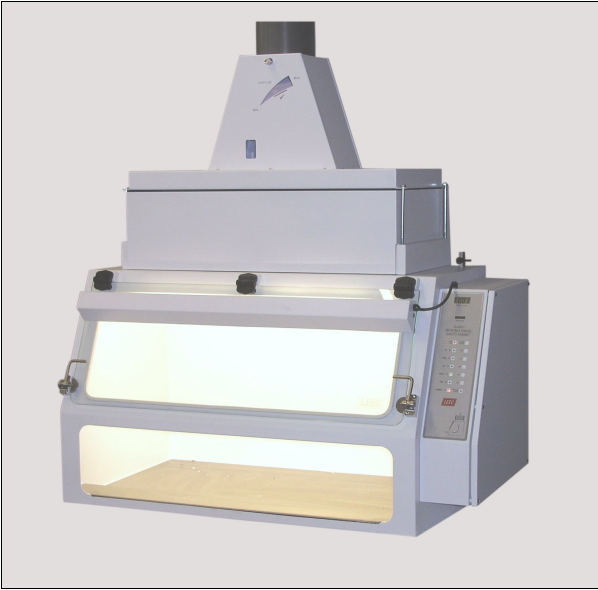




LATEST LABORATORY CABINET DESIGN
CLASS 1 MICROBIOLOGICAL SAFETY CABINET

MODEL WL4e



- EFFICIENT ERGONOMIC DESIGN
- DIGITAL DISPLAY OF AIR VELOCITY
- DOUBLE 13 AMP SOCKET
- WIPE DOWN EASY, CLEAN CONTROL PANEL
- QUICK RELEASE WINDOW CATCH
- WINDOW OPEN ALARM
- HOUR RUN METER

The **NEW** Model WL4e incorporates a Digital Indication of Air Flow and Hours Run, on the popular LEEC Class 1 Cabinet. The cabinet is finished in white polyester powder paint to give a smooth; durable, easy-clean surface and the stainless steel floor has radiused corners to give a hard-wearing surface which is easy to keep to clean. The whole work area is evenly illuminated, and the front edge has a raised arm rest to reduce operator fatigue. The steel night door is easily clamped into position, guaranteeing a gastight seal without the need for taping, even during fumigation. A 6mm thick toughened glass window is hinged to allow easy access to the interior for cleaning, pre-filter changing and placing bulky objects inside. The anti-blowback valve is fitted adjacent to the HEPA filter, and combines an airflow indicator and the low flow warning system.

AIR FILTRATION

The main HEPA filter is used at only 75% of its rated capacity (with NaCl penetration not exceeding 0.003% when tested to BS3928) so that it is never overstressed.

INSTALLATION AND COMMISSIONING

Installation and commissioning must be carried out by qualified engineers. Please contact LEEC for costs of this and post-installation maintenance / testing contracts.

